

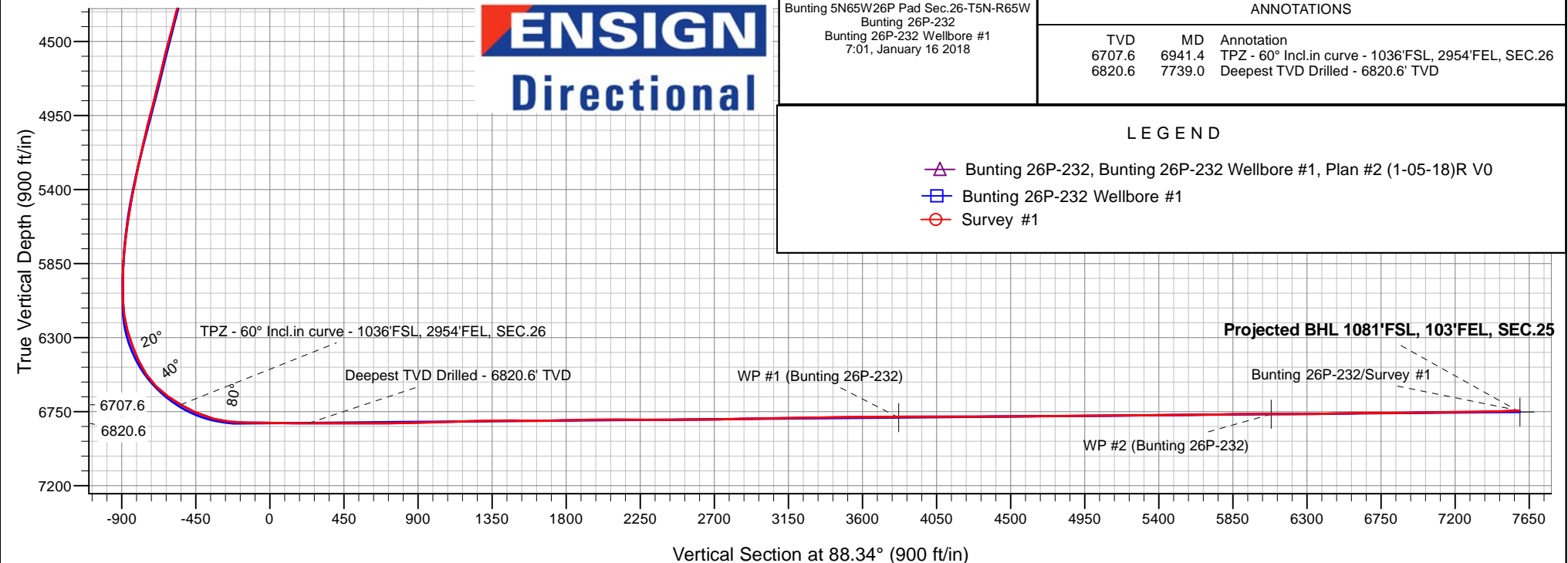
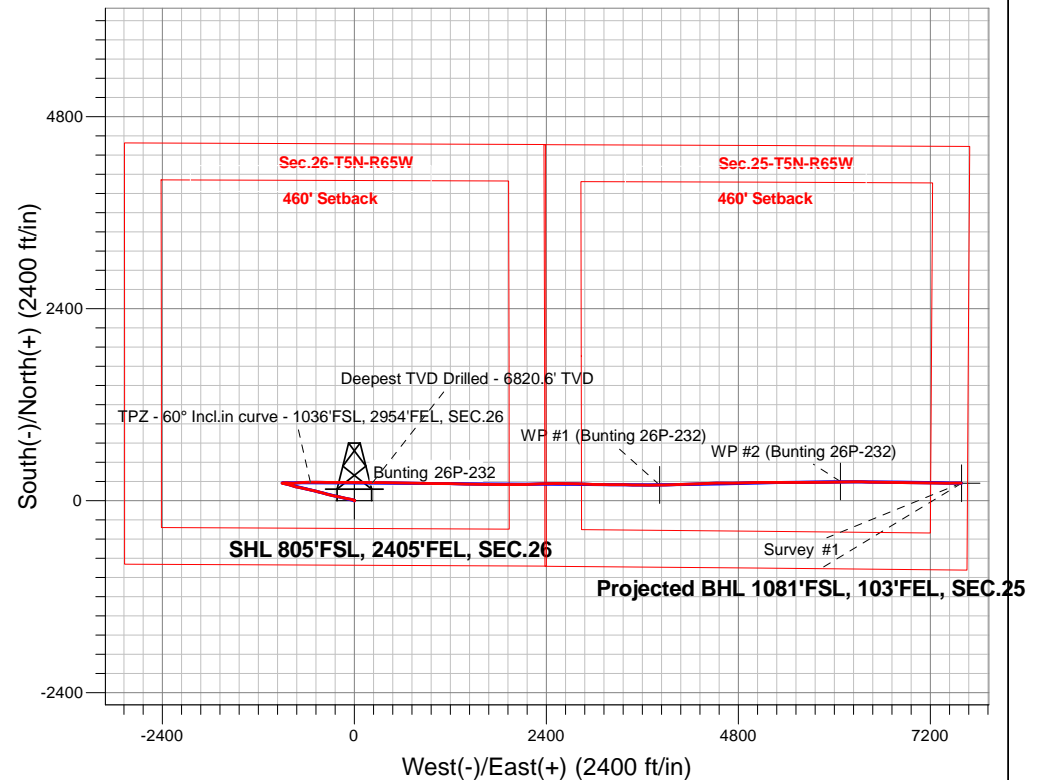
PDC Energy Inc. DJ Basin

Well Name: **Bunting 26P-232**

Surface Location: Bunting 5N65W26P Pad Sec.26-T5N-R65W
North American Datum 1983 , US State Plane 1983, Colorado Northern Zone
Ground Elevation: 4649.0
+N/-S+E/-W Northing Easting Latitude Longitude Slot
0.0 0.0377080.47 3242530.31 40.365220 -104.629620
Original Well Elev WELL @ 4672.0ft (Original Well Elev)

FINAL SURVEY

Projected Bottom Hole Location
15,101'MD 6744'TVD 221'N & 7588'E of SHL
92.4 degree Incl @ 89.5 degree AZM





PDC Energy Inc. DJ Basin

SEC.26-T5N-R65W

Bunting 5N65W26P Pad Sec.26-T5N-R65W

Bunting 26P-232

Bunting 26P-232 Wellbore #1

Survey: Survey #1

Standard Survey Report

16 January, 2018

Company:	PDC Energy Inc. DJ Basin	Local Co-ordinate Reference:	Well Bunting 26P-232
Project:	SEC.26-T5N-R65W	TVD Reference:	WELL @ 4672.0ft (Original Well Elev)
Site:	Bunting 5N65W26P Pad Sec.26-T5N-R65W	MD Reference:	WELL @ 4672.0ft (Original Well Elev)
Well:	Bunting 26P-232	North Reference:	True
Wellbore:	Bunting 26P-232 Wellbore #1	Survey Calculation Method:	Minimum Curvature
Design:	Bunting 26P-232 Wellbore #1	Database:	US_EDM

Project	SEC.26-T5N-R65W, Weld County, CO		
Map System:	US State Plane 1983	System Datum:	Mean Sea Level
Geo Datum:	North American Datum 1983		Using Well Reference Point
Map Zone:	Colorado Northern Zone		Using geodetic scale factor

Site	Bunting 5N65W26P Pad Sec.26-T5N-R65W				
Site Position:		Northing:	1,377,186.11 usft	Latitude:	40.365510
From:	Lat/Long	Easting:	3,242,529.28 usft	Longitude:	-104.629620
Position Uncertainty:	0.0 ft	Slot Radius:	13-3/16 "	Grid Convergence:	0.56 °

Well	Bunting 26P-232					
Well Position	+N/-S	0.0 ft	Northing:	1,377,080.47 usft	Latitude:	40.365220
	+E/-W	0.0 ft	Easting:	3,242,530.32 usft	Longitude:	-104.629620
Position Uncertainty		0.0 ft	Wellhead Elevation:	0.0 ft	Ground Level:	4,649.0 ft

Wellbore	Bunting 26P-232 Wellbore #1				
Magnetics	Model Name	Sample Date	Declination (°)	Dip Angle (°)	Field Strength (nT)
	IGRF2010	1/5/2018	7.90	66.81	52,438

Design	Bunting 26P-232 Wellbore #1				
Audit Notes:					
Version:	1.0	Phase:	ACTUAL	Tie On Depth:	0.0
Vertical Section:	Depth From (TVD) (ft)	+N/-S (ft)	+E/-W (ft)	Direction (°)	
	0.0	0.0	0.0	88.34	

Survey Program	Date	1/16/2018			
From (ft)	To (ft)	Survey (Wellbore)	Tool Name	Description	
249.0	15,101.0	Survey #1 (Bunting 26P-232 Wellbore #1)	MWD	MWD - Standard	

Survey										
Measured Depth (ft)	Inclination (°)	Azimuth (°)	Vertical Depth (ft)	+N/-S (ft)	+E/-W (ft)	Vertical Section (ft)	Dogleg Rate (°/100usft)	Build Rate (°/100usft)	Turn Rate (°/100usft)	
0.0	0.00	0.00	0.0	0.0	0.0	0.0	0.00	0.00	0.00	
1.0	0.00	123.70	1.0	0.0	0.0	0.0	0.20	0.20	0.00	
SHL 805'FSL, 2405'FEL, SEC.26										
249.0	0.50	123.70	249.0	-0.6	0.9	0.9	0.20	0.20	0.00	
345.0	0.40	174.70	345.0	-1.2	1.3	1.2	0.41	-0.10	53.13	
441.0	0.40	191.90	441.0	-1.8	1.2	1.2	0.12	0.00	17.92	
536.0	0.40	190.20	536.0	-2.5	1.1	1.0	0.01	0.00	-1.79	
632.0	0.40	158.00	632.0	-3.1	1.2	1.1	0.23	0.00	-33.54	
728.0	0.50	76.30	728.0	-3.3	1.7	1.6	0.62	0.10	-85.10	
823.0	0.40	168.00	823.0	-3.6	2.2	2.1	0.68	-0.11	96.53	
919.0	0.70	173.00	919.0	-4.5	2.3	2.2	0.32	0.31	5.21	

Company:	PDC Energy Inc. DJ Basin	Local Co-ordinate Reference:	Well Bunting 26P-232
Project:	SEC.26-T5N-R65W	TVD Reference:	WELL @ 4672.0ft (Original Well Elev)
Site:	Bunting 5N65W26P Pad Sec.26-T5N-R65W	MD Reference:	WELL @ 4672.0ft (Original Well Elev)
Well:	Bunting 26P-232	North Reference:	True
Wellbore:	Bunting 26P-232 Wellbore #1	Survey Calculation Method:	Minimum Curvature
Design:	Bunting 26P-232 Wellbore #1	Database:	US_EDM

Survey									
Measured Depth (ft)	Inclination (°)	Azimuth (°)	Vertical Depth (ft)	+N/-S (ft)	+E/-W (ft)	Vertical Section (ft)	Dogleg Rate (°/100usft)	Build Rate (°/100usft)	Turn Rate (°/100usft)
1,015.0	1.20	344.90	1,015.0	-4.1	2.1	2.0	1.97	0.52	179.06
1,110.0	1.10	357.70	1,110.0	-2.2	1.8	1.8	0.29	-0.11	13.47
1,206.0	1.10	343.60	1,205.9	-0.4	1.5	1.5	0.28	0.00	-14.69
1,302.0	1.10	349.10	1,301.9	1.4	1.1	1.2	0.11	0.00	5.73
1,397.0	1.10	352.30	1,396.9	3.2	0.8	0.9	0.06	0.00	3.37
1,493.0	1.00	11.90	1,492.9	4.9	0.9	1.0	0.39	-0.10	20.42
1,602.0	2.60	299.00	1,601.8	7.0	-1.1	-0.9	2.29	1.47	-66.88
1,682.0	2.60	288.40	1,681.8	8.5	-4.4	-4.2	0.60	0.00	-13.25
1,777.0	2.60	294.40	1,776.7	10.1	-8.4	-8.1	0.29	0.00	6.32
1,873.0	3.40	280.20	1,872.5	11.5	-13.2	-12.9	1.13	0.83	-14.79
1,968.0	5.10	279.80	1,967.3	12.7	-20.1	-19.8	1.79	1.79	-0.42
2,064.0	6.60	283.50	2,062.8	14.7	-29.7	-29.3	1.61	1.56	3.85
2,160.0	8.20	281.40	2,158.0	17.3	-41.8	-41.3	1.69	1.67	-2.19
2,255.0	9.50	280.70	2,251.8	20.1	-56.1	-55.5	1.37	1.37	-0.74
2,350.0	10.90	279.80	2,345.3	23.1	-72.7	-72.0	1.48	1.47	-0.95
2,445.0	13.10	281.40	2,438.2	26.8	-92.1	-91.3	2.34	2.32	1.68
2,541.0	14.40	280.40	2,531.5	31.1	-114.5	-113.5	1.38	1.35	-1.04
2,636.0	16.20	282.60	2,623.1	36.1	-139.0	-137.9	1.99	1.89	2.32
2,732.0	16.00	282.30	2,715.4	41.9	-165.0	-163.8	0.23	-0.21	-0.31
2,827.0	16.10	281.90	2,806.6	47.4	-190.7	-189.3	0.16	0.11	-0.42
2,923.0	15.20	281.80	2,899.1	52.7	-216.1	-214.5	0.94	-0.94	-0.10
3,019.0	14.70	281.20	2,991.8	57.6	-240.3	-238.6	0.55	-0.52	-0.63
3,115.0	13.70	280.40	3,084.9	62.0	-263.5	-261.6	1.06	-1.04	-0.83
3,211.0	14.20	282.80	3,178.1	66.7	-286.1	-284.1	0.80	0.52	2.50
3,307.0	13.70	283.50	3,271.2	72.0	-308.7	-306.5	0.55	-0.52	0.73
3,403.0	14.90	287.70	3,364.3	78.4	-331.5	-329.1	1.65	1.25	4.38
3,498.0	14.00	286.20	3,456.3	85.3	-354.2	-351.5	1.03	-0.95	-1.58
3,594.0	14.50	284.80	3,549.3	91.6	-376.9	-374.1	0.63	0.52	-1.46
3,690.0	15.50	284.60	3,642.0	97.9	-401.0	-398.0	1.04	1.04	-0.21
3,786.0	15.40	284.90	3,734.6	104.4	-425.7	-422.5	0.13	-0.10	0.31
3,881.0	15.40	284.80	3,826.2	110.9	-450.1	-446.7	0.03	0.00	-0.11
3,977.0	14.70	285.80	3,918.9	117.4	-474.1	-470.5	0.78	-0.73	1.04
4,073.0	13.50	285.30	4,012.0	123.7	-496.6	-492.9	1.26	-1.25	-0.52
4,168.0	14.70	280.50	4,104.1	128.8	-519.2	-515.3	1.76	1.26	-5.05
4,264.0	13.30	281.20	4,197.3	133.2	-542.0	-537.9	1.47	-1.46	0.73
4,359.0	14.30	281.90	4,289.5	137.7	-564.2	-560.0	1.07	1.05	0.74
4,455.0	15.50	283.00	4,382.3	143.1	-588.3	-583.9	1.28	1.25	1.15
4,551.0	15.20	282.60	4,474.9	148.7	-613.1	-608.5	0.33	-0.31	-0.42
4,646.0	14.50	281.90	4,566.7	153.9	-636.9	-632.2	0.76	-0.74	-0.74
4,742.0	13.50	280.70	4,659.8	158.4	-659.7	-654.8	1.08	-1.04	-1.25
4,838.0	14.90	283.20	4,752.9	163.3	-682.7	-677.7	1.59	1.46	2.60
4,934.0	13.80	281.80	4,845.9	168.5	-705.9	-700.7	1.20	-1.15	-1.46
5,030.0	15.20	285.30	4,938.8	174.2	-729.3	-723.9	1.72	1.46	3.65

Company:	PDC Energy Inc. DJ Basin	Local Co-ordinate Reference:	Well Bunting 26P-232
Project:	SEC.26-T5N-R65W	TVD Reference:	WELL @ 4672.0ft (Original Well Elev)
Site:	Bunting 5N65W26P Pad Sec.26-T5N-R65W	MD Reference:	WELL @ 4672.0ft (Original Well Elev)
Well:	Bunting 26P-232	North Reference:	True
Wellbore:	Bunting 26P-232 Wellbore #1	Survey Calculation Method:	Minimum Curvature
Design:	Bunting 26P-232 Wellbore #1	Database:	US_EDM

Survey									
Measured Depth (ft)	Inclination (°)	Azimuth (°)	Vertical Depth (ft)	+N/-S (ft)	+E/-W (ft)	Vertical Section (ft)	Dogleg Rate (°/100usft)	Build Rate (°/100usft)	Turn Rate (°/100usft)
5,125.0	14.80	284.90	5,030.6	180.6	-753.0	-747.5	0.43	-0.42	-0.42
5,221.0	13.30	286.70	5,123.7	186.9	-775.4	-769.7	1.63	-1.56	1.88
5,317.0	13.50	286.30	5,217.1	193.2	-796.8	-790.8	0.23	0.21	-0.42
5,413.0	11.90	286.30	5,310.8	199.1	-817.0	-810.9	1.67	-1.67	0.00
5,508.0	11.60	285.10	5,403.8	204.4	-835.6	-829.4	0.41	-0.32	-1.26
5,604.0	10.60	281.20	5,498.0	208.6	-853.6	-847.2	1.30	-1.04	-4.06
5,700.0	8.40	280.90	5,592.7	211.6	-869.2	-862.7	2.29	-2.29	-0.31
5,796.0	7.30	286.90	5,687.8	214.7	-881.9	-875.3	1.43	-1.15	6.25
5,892.0	4.90	286.90	5,783.2	217.7	-891.6	-885.0	2.50	-2.50	0.00
5,988.0	3.10	280.40	5,879.0	219.4	-898.1	-891.4	1.93	-1.88	-6.77
6,083.0	1.10	282.30	5,973.9	220.0	-901.5	-894.8	2.11	-2.11	2.00
6,179.0	2.30	83.30	6,069.9	220.4	-900.5	-893.8	3.50	1.25	167.71
6,275.0	7.90	88.20	6,165.5	220.9	-892.0	-885.2	5.85	5.83	5.10
6,370.0	15.90	83.80	6,258.3	222.5	-872.5	-865.7	8.47	8.42	-4.63
6,466.0	20.50	92.10	6,349.5	223.3	-842.6	-835.8	5.49	4.79	8.65
6,562.0	25.30	94.40	6,437.9	221.1	-805.3	-798.6	5.09	5.00	2.40
6,657.0	32.60	89.30	6,521.0	219.9	-759.4	-752.8	8.11	7.68	-5.37
6,753.0	44.70	85.40	6,595.9	222.9	-699.7	-693.0	12.85	12.60	-4.06
6,849.0	54.80	86.80	6,657.8	227.8	-626.7	-619.8	10.58	10.52	1.46
6,941.4	60.00	88.83	6,707.6	230.7	-548.9	-542.0	5.92	5.62	2.19
TPZ - 60° Incl.in curve - 1036'FSL, 2954'FEL, SEC.26									
6,945.0	60.20	88.90	6,709.4	230.8	-545.8	-538.9	5.92	5.64	2.07
7,041.0	64.30	91.40	6,754.1	230.5	-460.9	-454.0	4.85	4.27	2.60
7,165.0	76.90	90.50	6,795.2	228.6	-344.2	-337.4	10.18	10.16	-0.73
7,261.0	84.10	90.50	6,811.0	227.8	-249.6	-242.9	7.50	7.50	0.00
7,332.7	87.91	89.45	6,816.0	227.8	-178.0	-171.3	5.51	5.31	-1.46
LPL 1027'FSL, 2585'FEL, SEC.26									
7,357.0	89.20	89.10	6,816.6	228.2	-153.8	-147.1	5.51	5.31	-1.45
7,452.0	89.40	90.70	6,817.8	228.3	-58.8	-52.1	1.70	0.21	1.68
7,548.0	89.30	90.20	6,818.9	227.6	37.2	43.8	0.53	-0.10	-0.52
7,643.0	89.20	89.80	6,820.1	227.6	132.2	138.7	0.43	-0.11	-0.42
7,739.0	90.20	91.20	6,820.6	226.7	228.2	234.7	1.79	1.04	1.46
Deepest TVD Drilled - 6820.6' TVD									
7,835.0	90.00	90.70	6,820.5	225.1	324.2	330.6	0.56	-0.21	-0.52
7,930.0	90.00	90.50	6,820.5	224.1	419.2	425.5	0.21	0.00	-0.21
8,026.0	90.00	90.00	6,820.5	223.7	515.2	521.4	0.52	0.00	-0.52
8,121.0	90.10	91.60	6,820.4	222.4	610.2	616.3	1.69	0.11	1.68
8,217.0	90.10	91.20	6,820.2	220.0	706.1	712.2	0.42	0.00	-0.42
8,312.0	91.30	91.60	6,819.1	217.7	801.1	807.1	1.33	1.26	0.42
8,408.0	91.30	91.20	6,816.9	215.4	897.0	902.9	0.42	0.00	-0.42
8,504.0	91.50	90.50	6,814.5	214.0	993.0	998.8	0.76	0.21	-0.73
8,599.0	91.80	90.00	6,811.8	213.5	1,088.0	1,093.7	0.61	0.32	-0.53
8,695.0	92.20	90.50	6,808.4	213.1	1,183.9	1,189.6	0.67	0.42	0.52
8,791.0	90.50	92.10	6,806.2	210.9	1,279.8	1,285.4	2.43	-1.77	1.67

Company:	PDC Energy Inc. DJ Basin	Local Co-ordinate Reference:	Well Bunting 26P-232
Project:	SEC.26-T5N-R65W	TVD Reference:	WELL @ 4672.0ft (Original Well Elev)
Site:	Bunting 5N65W26P Pad Sec.26-T5N-R65W	MD Reference:	WELL @ 4672.0ft (Original Well Elev)
Well:	Bunting 26P-232	North Reference:	True
Wellbore:	Bunting 26P-232 Wellbore #1	Survey Calculation Method:	Minimum Curvature
Design:	Bunting 26P-232 Wellbore #1	Database:	US_EDM

Survey									
Measured Depth (ft)	Inclination (°)	Azimuth (°)	Vertical Depth (ft)	+N/-S (ft)	+E/-W (ft)	Vertical Section (ft)	Dogleg Rate (°/100usft)	Build Rate (°/100usft)	Turn Rate (°/100usft)
8,886.0	90.80	91.40	6,805.1	208.0	1,374.8	1,380.2	0.80	0.32	-0.74
8,982.0	89.70	91.40	6,804.7	205.7	1,470.8	1,476.1	1.15	-1.15	0.00
9,077.0	90.00	90.90	6,804.9	203.8	1,565.7	1,571.0	0.61	0.32	-0.53
9,173.0	90.10	90.30	6,804.8	202.8	1,661.7	1,666.9	0.63	0.10	-0.63
9,268.0	91.20	90.20	6,803.8	202.4	1,756.7	1,761.8	1.16	1.16	-0.11
9,364.0	91.90	90.30	6,801.2	202.0	1,852.7	1,857.8	0.74	0.73	0.10
9,460.0	90.70	90.70	6,799.0	201.1	1,948.7	1,953.7	1.32	-1.25	0.42
9,556.0	89.20	89.30	6,799.1	201.1	2,044.7	2,049.6	2.14	-1.56	-1.46
9,651.0	89.80	88.40	6,799.9	203.0	2,139.6	2,144.6	1.14	0.63	-0.95
9,747.0	90.50	88.10	6,799.7	206.0	2,235.6	2,240.6	0.79	0.73	-0.31
9,842.0	89.80	88.10	6,799.4	209.1	2,330.5	2,335.6	0.74	-0.74	0.00
9,938.0	90.00	87.20	6,799.6	213.0	2,426.5	2,431.6	0.96	0.21	-0.94
10,034.0	90.70	88.60	6,799.0	216.6	2,522.4	2,527.6	1.63	0.73	1.46
10,130.0	90.70	91.70	6,797.8	216.3	2,618.4	2,623.5	3.23	0.00	3.23
10,226.0	90.70	92.10	6,796.6	213.1	2,714.3	2,719.3	0.42	0.00	0.42
10,321.0	90.80	92.50	6,795.4	209.3	2,809.2	2,814.1	0.43	0.11	0.42
10,417.0	91.30	91.70	6,793.6	205.8	2,905.1	2,909.9	0.98	0.52	-0.83
10,513.0	91.90	91.60	6,791.0	203.0	3,001.1	3,005.7	0.63	0.63	-0.10
10,608.0	90.50	90.70	6,789.0	201.1	3,096.0	3,100.5	1.75	-1.47	-0.95
10,704.0	90.90	90.20	6,787.8	200.4	3,192.0	3,196.5	0.67	0.42	-0.52
10,800.0	90.30	90.70	6,786.8	199.6	3,288.0	3,292.4	0.81	-0.63	0.52
10,896.0	90.90	90.50	6,785.8	198.6	3,384.0	3,388.3	0.66	0.63	-0.21
10,991.0	91.50	90.20	6,783.8	198.0	3,479.0	3,483.2	0.71	0.63	-0.32
11,087.0	90.00	90.90	6,782.5	197.1	3,574.9	3,579.2	1.72	-1.56	0.73
11,183.0	90.20	90.50	6,782.4	195.9	3,670.9	3,675.1	0.47	0.21	-0.42
11,279.0	90.40	89.80	6,781.9	195.7	3,766.9	3,771.0	0.76	0.21	-0.73
11,328.0	90.55	89.44	6,781.5	196.0	3,815.9	3,820.0	0.79	0.31	-0.73
WP #1 (Bunting 26P-232)									
11,375.0	90.70	89.10	6,781.0	196.6	3,862.9	3,867.0	0.79	0.31	-0.73
11,470.0	89.70	88.40	6,780.6	198.7	3,957.9	3,962.0	1.28	-1.05	-0.74
11,565.0	90.00	88.40	6,780.9	201.3	4,052.9	4,057.0	0.32	0.32	0.00
11,661.0	90.00	87.70	6,780.9	204.6	4,148.8	4,153.0	0.73	0.00	-0.73
11,756.0	90.40	86.80	6,780.5	209.2	4,243.7	4,248.0	1.04	0.42	-0.95
11,851.0	90.70	87.50	6,779.6	213.9	4,338.6	4,342.9	0.80	0.32	0.74
11,946.0	90.40	88.10	6,778.7	217.5	4,433.5	4,437.9	0.71	-0.32	0.63
12,042.0	90.40	88.90	6,778.0	220.0	4,529.5	4,533.9	0.83	0.00	0.83
12,137.0	90.10	90.30	6,777.6	220.7	4,624.5	4,628.9	1.51	-0.32	1.47
12,232.0	90.30	89.50	6,777.3	220.9	4,719.5	4,723.9	0.87	0.21	-0.84
12,327.0	90.40	89.30	6,776.7	221.9	4,814.4	4,818.9	0.24	0.11	-0.21
12,423.0	90.60	88.20	6,775.9	224.0	4,910.4	4,914.8	1.16	0.21	-1.15
12,518.0	90.20	88.40	6,775.2	226.8	5,005.4	5,009.8	0.47	-0.42	0.21
12,613.0	90.60	89.80	6,774.6	228.3	5,100.4	5,104.8	1.53	0.42	1.47
12,709.0	91.00	89.30	6,773.2	229.0	5,196.3	5,200.8	0.67	0.42	-0.52

Company:	PDC Energy Inc. DJ Basin	Local Co-ordinate Reference:	Well Bunting 26P-232
Project:	SEC.26-T5N-R65W	TVD Reference:	WELL @ 4672.0ft (Original Well Elev)
Site:	Bunting 5N65W26P Pad Sec.26-T5N-R65W	MD Reference:	WELL @ 4672.0ft (Original Well Elev)
Well:	Bunting 26P-232	North Reference:	True
Wellbore:	Bunting 26P-232 Wellbore #1	Survey Calculation Method:	Minimum Curvature
Design:	Bunting 26P-232 Wellbore #1	Database:	US_EDM

Survey									
Measured Depth (ft)	Inclination (°)	Azimuth (°)	Vertical Depth (ft)	+N/-S (ft)	+E/-W (ft)	Vertical Section (ft)	Dogleg Rate (°/100usft)	Build Rate (°/100usft)	Turn Rate (°/100usft)
12,804.0	90.30	90.70	6,772.1	229.0	5,291.3	5,295.7	1.65	-0.74	1.47
12,900.0	90.60	90.30	6,771.4	228.2	5,387.3	5,391.7	0.52	0.31	-0.42
12,995.0	91.00	89.80	6,770.1	228.1	5,482.3	5,486.6	0.67	0.42	-0.53
13,091.0	90.30	90.30	6,769.0	228.0	5,578.3	5,582.6	0.90	-0.73	0.52
13,187.0	90.40	89.80	6,768.4	227.9	5,674.3	5,678.5	0.53	0.10	-0.52
13,283.0	90.80	89.30	6,767.4	228.7	5,770.3	5,774.5	0.67	0.42	-0.52
13,378.0	91.50	88.80	6,765.5	230.3	5,865.3	5,869.5	0.91	0.74	-0.53
13,474.0	90.70	88.40	6,763.6	232.6	5,961.2	5,965.5	0.93	-0.83	-0.42
13,569.0	89.30	89.60	6,763.6	234.3	6,056.2	6,060.4	1.94	-1.47	1.26
13,591.0	89.35	89.49	6,763.9	234.4	6,078.2	6,082.4	0.56	0.21	-0.52
WP #2 (Bunting 26P-232)									
13,665.0	89.50	89.10	6,764.6	235.4	6,152.2	6,156.4	0.56	0.21	-0.52
13,761.0	90.50	90.30	6,764.6	235.9	6,248.2	6,252.4	1.63	1.04	1.25
13,857.0	91.10	90.20	6,763.3	235.4	6,344.2	6,348.3	0.63	0.63	-0.10
13,953.0	90.70	91.40	6,761.8	234.1	6,440.2	6,444.2	1.32	-0.42	1.25
14,049.0	91.50	91.20	6,759.9	231.9	6,536.1	6,540.1	0.86	0.83	-0.21
14,144.0	90.60	91.20	6,758.2	229.9	6,631.1	6,635.0	0.95	-0.95	0.00
14,240.0	89.70	91.00	6,757.9	228.1	6,727.1	6,730.8	0.96	-0.94	-0.21
14,336.0	90.30	90.90	6,757.9	226.5	6,823.0	6,826.7	0.63	0.63	-0.10
14,431.0	91.30	90.30	6,756.6	225.5	6,918.0	6,921.7	1.23	1.05	-0.63
14,527.0	90.70	91.00	6,754.9	224.4	7,014.0	7,017.6	0.96	-0.63	0.73
14,623.0	90.40	90.90	6,754.0	222.8	7,110.0	7,113.5	0.33	-0.31	-0.10
14,719.0	91.20	91.00	6,752.7	221.2	7,206.0	7,209.3	0.84	0.83	0.10
14,815.0	90.20	90.20	6,751.5	220.2	7,301.9	7,305.3	1.33	-1.04	-0.83
14,911.0	91.20	90.20	6,750.3	219.9	7,397.9	7,401.2	1.04	1.04	0.00
15,007.0	92.10	89.60	6,747.6	220.1	7,493.9	7,497.1	1.13	0.94	-0.63
15,042.0	92.40	89.50	6,746.2	220.3	7,528.9	7,532.1	0.90	0.86	-0.29
15,101.0	92.40	89.50	6,743.7	220.8	7,587.8	7,591.0	0.00	0.00	0.00
BHL 1080'FSL, 100'FEL, SEC.25									

Company:	PDC Energy Inc. DJ Basin	Local Co-ordinate Reference:	Well Bunting 26P-232
Project:	SEC.26-T5N-R65W	TVD Reference:	WELL @ 4672.0ft (Original Well Elev)
Site:	Bunting 5N65W26P Pad Sec.26-T5N-R65W	MD Reference:	WELL @ 4672.0ft (Original Well Elev)
Well:	Bunting 26P-232	North Reference:	True
Wellbore:	Bunting 26P-232 Wellbore #1	Survey Calculation Method:	Minimum Curvature
Design:	Bunting 26P-232 Wellbore #1	Database:	US_EDM

Design Targets									
Target Name - hit/miss target - Shape	Dip Angle (°)	Dip Dir. (°)	TVD (ft)	+N/-S (ft)	+E/-W (ft)	Northing (usft)	Easting (usft)	Latitude	Longitude
SHL 805'FSL, 2405'FEL - survey hits target center - Point	0.00	0.00	1.0	0.0	0.0	1,377,080.47	3,242,530.32	40.365220	-104.629620
BHL 1080'FSL, 100'FEL - survey misses target center by 8.9ft at 15101.0ft MD (6743.7 TVD, 220.8 N, 7587.8 E) - Point	0.00	0.00	6,752.0	219.8	7,590.8	1,377,374.70	3,250,118.24	40.365820	-104.602380
WP #2 (Bunting 26P-232) - survey misses target center by 6.0ft at 13591.0ft MD (6763.9 TVD, 234.4 N, 6078.2 E) - Point	0.00	0.00	6,765.6	240.2	6,078.1	1,377,380.30	3,248,605.49	40.365877	-104.607809
WP #1 (Bunting 26P-232) - survey misses target center by 4.7ft at 11328.0ft MD (6781.5 TVD, 196.0 N, 3815.9 E) - Point	0.00	0.00	6,786.0	197.1	3,816.0	1,377,315.00	3,246,344.01	40.365760	-104.615926

Survey Annotations					
Measured Depth (ft)	Vertical Depth (ft)	Local Coordinates			
		+N/-S (ft)	+E/-W (ft)	Comment	
6,941.4	6,707.6	230.7	-548.9	TPZ - 60° Incl.in curve - 1036'FSL, 2954'FEL, SEC.26	
7,739.0	6,820.6	226.7	228.2	Deepest TVD Drilled - 6820.6' TVD	

Checked By: _____	Approved By: _____	Date: _____
-------------------	--------------------	-------------