

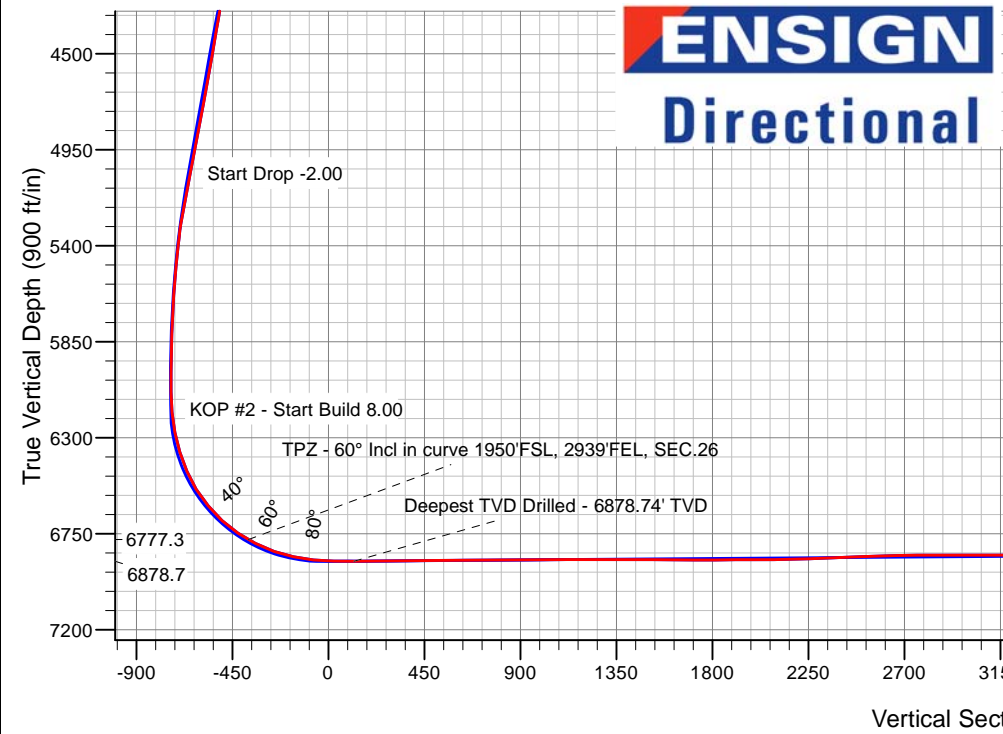
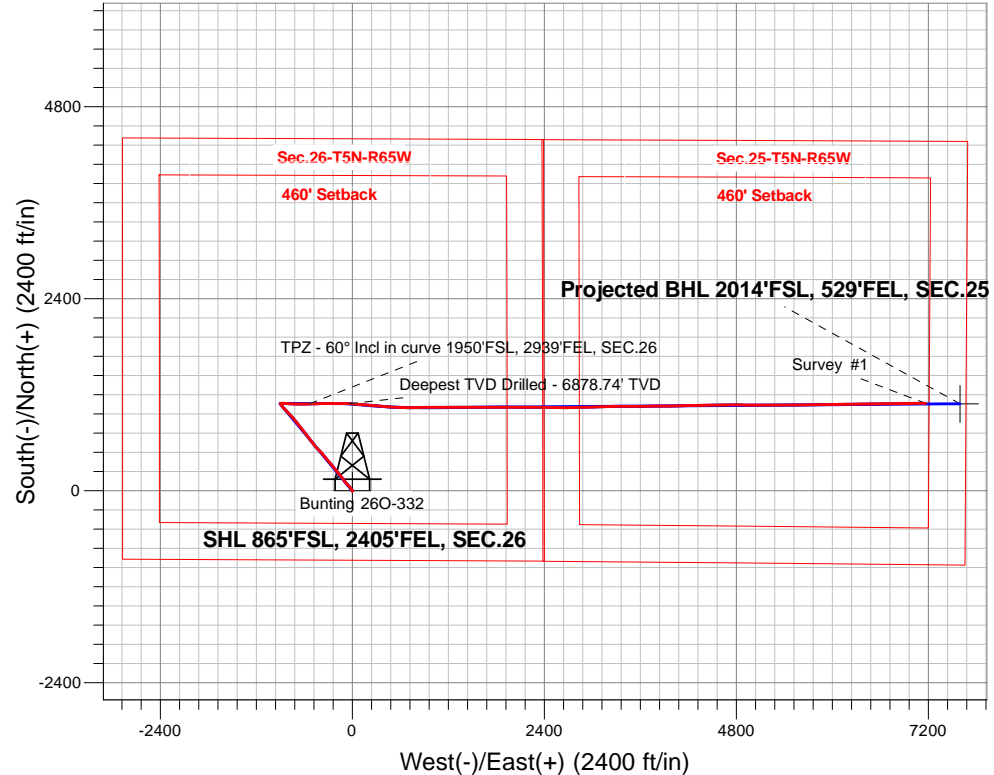
PDC Energy Inc. DJ Basin

Well Name: **Bunting 26O-332**

Surface Location: Bunting 5N65W26P Pad Sec.26-T5N-R65W
 North American Datum 1983 , US State Plane 1983, Colorado Northern Zone
 Ground Elevation: 4649.0
 +N/-S+E/-W Northing Easting Latitude Longitude Slot
 0.0 0.0 1377142.393242529.71 40.365390 -104.629620
 Original Well Elev WELL @ 4672.0ft (Original Well Elev)

FINAL SURVEY

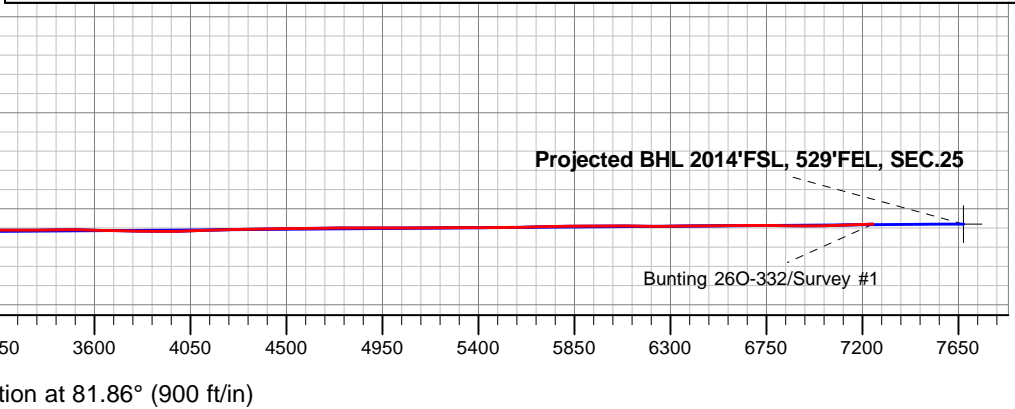
Projected Bottom Hole Location
14,849'MD 6822'TVD 1093'N & 7168'E of SHL
91.9 degree Incl @ 89.70 degree AZM



Bunting 5N65W26P Pad Sec.26-T5N-R65W
 Bunting 26O-332
 Bunting 26O-332 Wellbore #1
 7:01, December 13 2017

ANNOTATIONS		
TVD	MD	Annotation
6777.3	7126.1	TPZ - 60° Incl in curve 1950'FSL, 2939'FEL, SEC.26
6878.7	7642.0	Deepest TVD Drilled - 6878.74' TVD

LEGEND	
	Bunting 26O-332, Bunting 26O-332 Wellbore #1, Plan #3 (12-4-17) R V0
	Bunting 26O-332 Wellbore #1
	Survey #1



ENSIGN

Directional

PDC Energy Inc. DJ Basin

SEC.26-T5N-R65W

Bunting 5N65W26P Pad Sec.26-T5N-R65W

Bunting 26O-332

Bunting 26O-332 Wellbore #1

Survey: Survey #1

Standard Survey Report

13 December, 2017

Company:	PDC Energy Inc. DJ Basin	Local Co-ordinate Reference:	Well Bunting 26O-332
Project:	SEC.26-T5N-R65W	TVD Reference:	WELL @ 4672.0ft (Original Well Elev)
Site:	Bunting 5N65W26P Pad Sec.26-T5N-R65W	MD Reference:	WELL @ 4672.0ft (Original Well Elev)
Well:	Bunting 26O-332	North Reference:	True
Wellbore:	Bunting 26O-332 Wellbore #1	Survey Calculation Method:	Minimum Curvature
Design:	Bunting 26O-332 Wellbore #1	Database:	US_EDM

Project	SEC.26-T5N-R65W, Weld County, CO		
Map System:	US State Plane 1983	System Datum:	Mean Sea Level
Geo Datum:	North American Datum 1983		Using Well Reference Point
Map Zone:	Colorado Northern Zone		Using geodetic scale factor

Site	Bunting 5N65W26P Pad Sec.26-T5N-R65W				
Site Position:		Northing:	1,377,186.11 usft	Latitude:	40.365510
From:	Lat/Long	Easting:	3,242,529.28 usft	Longitude:	-104.629620
Position Uncertainty:	0.0 ft	Slot Radius:	13-3/16 "	Grid Convergence:	0.56 °

Well	Bunting 26O-332					
Well Position	+N/-S	0.0 ft	Northing:	1,377,142.39 usft	Latitude:	40.365390
	+E/-W	0.0 ft	Easting:	3,242,529.71 usft	Longitude:	-104.629620
Position Uncertainty		0.0 ft	Wellhead Elevation:	0.0 ft	Ground Level:	4,649.0 ft

Wellbore	Bunting 26O-332 Wellbore #1				
Magnetics	Model Name	Sample Date	Declination (°)	Dip Angle (°)	Field Strength (nT)
	IGRF2010	12/4/2017	7.91	66.82	52,447

Design	Bunting 26O-332 Wellbore #1				
Audit Notes:					
Version:	1.0	Phase:	ACTUAL	Tie On Depth:	0.0
Vertical Section:	Depth From (TVD) (ft)	+N/-S (ft)	+E/-W (ft)	Direction (°)	
	0.0	0.0	0.0	81.86	

Survey Program	Date	12/13/2017			
From (ft)	To (ft)	Survey (Wellbore)	Tool Name	Description	
153.0	14,849.0	Survey #1 (Bunting 26O-332 Wellbore #1)	MWD	MWD - Standard	

Survey										
Measured Depth (ft)	Inclination (°)	Azimuth (°)	Vertical Depth (ft)	+N/-S (ft)	+E/-W (ft)	Vertical Section (ft)	Dogleg Rate (°/100usft)	Build Rate (°/100usft)	Turn Rate (°/100usft)	
0.0	0.00	0.00	0.0	0.0	0.0	0.0	0.00	0.00	0.00	
1.0	0.00	189.90	1.0	0.0	0.0	0.0	0.26	0.26	0.00	
SHL 865'FSL, 2405'FEL, SEC.26										
153.0	0.40	189.90	153.0	-0.5	-0.1	-0.2	0.26	0.26	0.00	
249.0	0.30	207.10	249.0	-1.1	-0.3	-0.4	0.15	-0.10	17.92	
344.0	0.20	218.50	344.0	-1.4	-0.5	-0.7	0.12	-0.11	12.00	
440.0	0.30	80.70	440.0	-1.5	-0.3	-0.5	0.49	0.10	-143.54	
536.0	0.40	184.60	536.0	-1.8	-0.1	-0.4	0.58	0.10	108.23	
631.0	0.40	196.70	631.0	-2.5	-0.2	-0.6	0.09	0.00	12.74	
727.0	0.40	152.60	727.0	-3.1	-0.2	-0.6	0.31	0.00	-45.94	
823.0	1.60	340.20	823.0	-2.1	-0.5	-0.8	2.08	1.25	-179.58	

Company:	PDC Energy Inc. DJ Basin	Local Co-ordinate Reference:	Well Bunting 26O-332
Project:	SEC.26-T5N-R65W	TVD Reference:	WELL @ 4672.0ft (Original Well Elev)
Site:	Bunting 5N65W26P Pad Sec.26-T5N-R65W	MD Reference:	WELL @ 4672.0ft (Original Well Elev)
Well:	Bunting 26O-332	North Reference:	True
Wellbore:	Bunting 26O-332 Wellbore #1	Survey Calculation Method:	Minimum Curvature
Design:	Bunting 26O-332 Wellbore #1	Database:	US_EDM

Survey									
Measured Depth (ft)	Inclination (°)	Azimuth (°)	Vertical Depth (ft)	+N/-S (ft)	+E/-W (ft)	Vertical Section (ft)	Dogleg Rate (°/100usft)	Build Rate (°/100usft)	Turn Rate (°/100usft)
918.0	3.30	339.50	917.9	1.7	-1.9	-1.6	1.79	1.79	-0.74
1,014.0	4.40	332.10	1,013.7	7.5	-4.6	-3.5	1.25	1.15	-7.71
1,110.0	6.00	329.60	1,109.3	15.1	-8.8	-6.6	1.68	1.67	-2.60
1,205.0	7.50	322.20	1,203.6	24.3	-15.2	-11.6	1.82	1.58	-7.79
1,301.0	8.40	323.80	1,298.7	34.9	-23.1	-18.0	0.97	0.94	1.67
1,396.0	9.80	321.70	1,392.5	46.9	-32.2	-25.3	1.51	1.47	-2.21
1,492.0	8.80	318.60	1,487.2	58.8	-42.2	-33.4	1.16	-1.04	-3.23
1,587.0	9.10	318.90	1,581.1	69.9	-51.9	-41.5	0.32	0.32	0.32
1,631.0	9.90	320.00	1,624.5	75.4	-56.6	-45.4	1.86	1.82	2.50
1,777.0	11.30	317.30	1,768.0	95.5	-74.4	-60.1	1.02	0.96	-1.85
1,872.0	13.10	318.70	1,860.8	110.5	-87.8	-71.3	1.92	1.89	1.47
1,968.0	14.30	323.30	1,954.1	128.1	-102.1	-82.9	1.69	1.25	4.79
2,063.0	16.40	325.20	2,045.7	148.6	-116.7	-94.5	2.27	2.21	2.00
2,159.0	17.80	324.00	2,137.5	171.6	-133.1	-107.5	1.50	1.46	-1.25
2,254.0	20.00	319.70	2,227.3	195.7	-152.2	-122.9	2.74	2.32	-4.53
2,350.0	21.30	319.60	2,317.2	221.5	-174.1	-140.9	1.35	1.35	-0.10
2,444.0	20.00	319.00	2,405.1	246.6	-195.7	-158.8	1.40	-1.38	-0.64
2,540.0	20.30	319.70	2,495.2	271.7	-217.2	-176.6	0.40	0.31	0.73
2,636.0	21.50	321.20	2,584.9	298.1	-239.0	-194.4	1.37	1.25	1.56
2,731.0	21.00	320.40	2,673.5	324.8	-260.8	-212.1	0.61	-0.53	-0.84
2,827.0	21.50	319.90	2,762.9	351.5	-283.1	-230.4	0.55	0.52	-0.52
2,922.0	20.00	320.30	2,851.8	377.4	-304.7	-248.2	1.59	-1.58	0.42
3,018.0	20.20	321.20	2,941.9	402.9	-325.5	-265.2	0.38	0.21	0.94
3,114.0	20.90	320.40	3,031.8	429.0	-346.8	-282.6	0.79	0.73	-0.83
3,210.0	19.80	319.00	3,121.8	454.5	-368.4	-300.3	1.25	-1.15	-1.46
3,306.0	18.90	316.90	3,212.4	478.1	-389.7	-318.1	1.18	-0.94	-2.19
3,402.0	19.40	316.40	3,303.1	501.0	-411.3	-336.2	0.55	0.52	-0.52
3,497.0	19.20	315.50	3,392.8	523.6	-433.2	-354.6	0.38	-0.21	-0.95
3,594.0	18.70	317.60	3,484.5	546.4	-454.8	-372.9	0.87	-0.52	2.16
3,689.0	18.90	323.60	3,574.4	570.1	-474.2	-388.7	2.05	0.21	6.32
3,785.0	19.60	322.60	3,665.1	595.4	-493.2	-403.9	0.81	0.73	-1.04
3,881.0	19.70	322.20	3,755.5	620.9	-512.9	-419.8	0.17	0.10	-0.42
3,976.0	19.50	322.20	3,845.0	646.1	-532.5	-435.6	0.21	-0.21	0.00
4,072.0	18.20	321.50	3,935.8	670.5	-551.6	-451.1	1.37	-1.35	-0.73
4,168.0	19.20	322.40	4,026.8	694.8	-570.6	-466.4	1.08	1.04	0.94
4,263.0	19.00	322.60	4,116.5	719.4	-589.5	-481.7	0.22	-0.21	0.21
4,359.0	17.60	324.00	4,207.7	743.6	-607.5	-496.1	1.53	-1.46	1.46
4,455.0	17.90	322.60	4,299.1	767.0	-625.0	-510.1	0.54	0.31	-1.46
4,550.0	19.00	321.50	4,389.2	790.7	-643.5	-525.0	1.21	1.16	-1.16
4,646.0	19.10	320.30	4,480.0	815.1	-663.3	-541.2	0.42	0.10	-1.25
4,741.0	19.30	321.70	4,569.7	839.3	-682.9	-557.2	0.53	0.21	1.47
4,837.0	17.90	321.50	4,660.7	863.3	-702.0	-572.6	1.46	-1.46	-0.21
4,933.0	19.70	319.40	4,751.5	887.2	-721.7	-588.7	2.00	1.88	-2.19

Company:	PDC Energy Inc. DJ Basin	Local Co-ordinate Reference:	Well Bunting 26O-332
Project:	SEC.26-T5N-R65W	TVD Reference:	WELL @ 4672.0ft (Original Well Elev)
Site:	Bunting 5N65W26P Pad Sec.26-T5N-R65W	MD Reference:	WELL @ 4672.0ft (Original Well Elev)
Well:	Bunting 26O-332	North Reference:	True
Wellbore:	Bunting 26O-332 Wellbore #1	Survey Calculation Method:	Minimum Curvature
Design:	Bunting 26O-332 Wellbore #1	Database:	US_EDM

Survey										
Measured Depth (ft)	Inclination (°)	Azimuth (°)	Vertical Depth (ft)	+N/-S (ft)	+E/-W (ft)	Vertical Section (ft)	Dogleg Rate (°/100usft)	Build Rate (°/100usft)	Turn Rate (°/100usft)	
5,029.0	18.20	318.30	4,842.3	910.7	-742.2	-605.7	1.61	-1.56	-1.15	
5,125.0	19.60	317.10	4,933.2	933.6	-763.1	-623.2	1.51	1.46	-1.25	
5,221.0	19.20	317.30	5,023.7	957.0	-784.8	-641.3	0.42	-0.42	0.21	
5,316.0	18.00	316.40	5,113.7	979.1	-805.5	-658.7	1.30	-1.26	-0.95	
5,412.0	17.10	314.50	5,205.3	999.8	-825.8	-675.9	1.11	-0.94	-1.98	
5,508.0	14.60	315.50	5,297.6	1,018.3	-844.3	-691.6	2.62	-2.60	1.04	
5,604.0	12.20	322.90	5,391.0	1,035.0	-858.9	-703.7	3.07	-2.50	7.71	
5,700.0	10.80	322.90	5,485.1	1,050.3	-870.5	-713.0	1.46	-1.46	0.00	
5,795.0	8.00	320.40	5,578.8	1,062.5	-880.1	-720.7	2.98	-2.95	-2.63	
5,892.0	7.40	317.60	5,674.9	1,072.3	-888.6	-727.8	0.73	-0.62	-2.89	
5,988.0	4.90	327.50	5,770.4	1,080.3	-895.0	-732.9	2.82	-2.60	10.31	
6,111.0	2.90	329.60	5,893.1	1,087.4	-899.4	-736.3	1.63	-1.63	1.71	
6,207.0	0.40	312.40	5,989.0	1,089.8	-900.8	-737.4	2.63	-2.60	-17.92	
6,303.0	0.40	102.00	6,085.0	1,089.9	-900.8	-737.3	0.80	0.00	155.83	
6,398.0	4.60	77.90	6,179.9	1,090.7	-896.7	-733.2	4.46	4.42	-25.37	
6,494.0	11.80	81.70	6,274.9	1,092.9	-883.2	-719.5	7.52	7.50	3.96	
6,590.0	16.90	92.50	6,367.9	1,093.7	-859.5	-696.0	5.98	5.31	11.25	
6,685.0	24.50	98.30	6,456.7	1,090.2	-826.2	-663.5	8.28	8.00	6.11	
6,781.0	31.80	92.50	6,541.3	1,086.3	-781.2	-619.4	8.11	7.60	-6.04	
6,877.0	39.90	90.70	6,619.0	1,084.8	-725.0	-564.1	8.51	8.44	-1.88	
6,973.0	48.50	91.10	6,687.8	1,083.7	-658.2	-498.0	8.96	8.96	0.42	
7,068.0	55.40	89.30	6,746.3	1,083.5	-583.4	-424.1	7.41	7.26	-1.89	
7,126.1	60.00	88.18	6,777.3	1,084.6	-534.3	-375.3	8.08	7.91	-1.93	
TPZ - 60° Incl in curve 1950'FSL, 2939'FEL, SEC.26										
7,164.0	63.00	87.50	6,795.4	1,085.9	-501.0	-342.2	8.08	7.92	-1.79	
7,260.0	70.80	88.90	6,833.1	1,088.6	-412.8	-254.5	8.23	8.13	1.46	
7,355.0	78.90	88.80	6,857.9	1,090.4	-321.2	-163.6	8.53	8.53	-0.11	
7,451.0	83.90	89.80	6,872.2	1,091.6	-226.4	-69.5	5.31	5.21	1.04	
7,496.7	86.23	90.80	6,876.1	1,091.3	-180.8	-24.5	5.55	5.10	2.19	
LPL 1954'FSL, 2585'FEL, SEC.26										
7,547.0	88.80	91.90	6,878.3	1,090.2	-130.6	25.1	5.55	5.11	2.18	
7,642.0	90.70	90.70	6,878.7	1,088.0	-35.6	118.8	2.37	2.00	-1.26	
Deepest TVD Drilled - 6878.74' TVD										
7,738.0	90.20	94.40	6,878.0	1,083.7	60.3	213.1	3.89	-0.52	3.85	
7,834.0	90.30	96.00	6,877.6	1,075.0	155.9	306.5	1.67	0.10	1.67	
7,929.0	90.70	95.90	6,876.7	1,065.2	250.3	398.7	0.43	0.42	-0.11	
8,025.0	91.60	95.30	6,874.8	1,055.8	345.9	491.9	1.13	0.94	-0.63	
8,117.4	90.04	94.42	6,873.5	1,048.0	437.9	581.9	1.93	-1.68	-0.95	
WP #1 (Bunting 26O-332)										
8,120.0	90.00	94.40	6,873.5	1,047.8	440.5	584.5	1.93	-1.68	-0.95	
8,216.0	89.90	90.90	6,873.6	1,043.4	536.4	678.8	3.65	-0.10	-3.65	
8,311.0	90.10	90.70	6,873.6	1,042.0	631.4	772.6	0.30	0.21	-0.21	
8,407.0	90.60	90.50	6,873.0	1,041.0	727.4	867.5	0.56	0.52	-0.21	
8,503.0	90.80	89.30	6,871.8	1,041.2	823.4	962.5	1.27	0.21	-1.25	

Company:	PDC Energy Inc. DJ Basin	Local Co-ordinate Reference:	Well Bunting 26O-332
Project:	SEC.26-T5N-R65W	TVD Reference:	WELL @ 4672.0ft (Original Well Elev)
Site:	Bunting 5N65W26P Pad Sec.26-T5N-R65W	MD Reference:	WELL @ 4672.0ft (Original Well Elev)
Well:	Bunting 26O-332	North Reference:	True
Wellbore:	Bunting 26O-332 Wellbore #1	Survey Calculation Method:	Minimum Curvature
Design:	Bunting 26O-332 Wellbore #1	Database:	US_EDM

Survey										
Measured Depth (ft)	Inclination (°)	Azimuth (°)	Vertical Depth (ft)	+N/-S (ft)	+E/-W (ft)	Vertical Section (ft)	Dogleg Rate (°/100usft)	Build Rate (°/100usft)	Turn Rate (°/100usft)	
8,598.0	90.00	90.00	6,871.1	1,041.8	918.4	1,056.7	1.12	-0.84	0.74	
8,694.0	90.20	89.10	6,871.0	1,042.5	1,014.4	1,151.8	0.96	0.21	-0.94	
8,790.0	90.00	90.50	6,870.8	1,042.9	1,110.4	1,246.9	1.47	-0.21	1.46	
8,885.0	89.90	89.70	6,870.9	1,042.7	1,205.4	1,340.9	0.85	-0.11	-0.84	
8,981.0	89.30	88.60	6,871.6	1,044.1	1,301.3	1,436.1	1.31	-0.63	-1.15	
9,076.0	90.00	90.90	6,872.1	1,044.5	1,396.3	1,530.2	2.53	0.74	2.42	
9,172.0	89.80	90.40	6,872.3	1,043.4	1,492.3	1,625.1	0.56	-0.21	-0.52	
9,267.0	90.10	89.10	6,872.4	1,043.9	1,587.3	1,719.2	1.40	0.32	-1.37	
9,363.0	90.10	90.70	6,872.2	1,044.0	1,683.3	1,814.2	1.67	0.00	1.67	
9,459.0	90.10	90.00	6,872.1	1,043.4	1,779.3	1,909.2	0.73	0.00	-0.73	
9,555.0	90.60	88.60	6,871.5	1,044.6	1,875.3	2,004.3	1.55	0.52	-1.46	
9,650.0	90.70	89.80	6,870.4	1,045.9	1,970.3	2,098.6	1.27	0.11	1.26	
9,746.0	90.40	89.60	6,869.5	1,046.4	2,066.3	2,193.7	0.38	-0.31	-0.21	
9,841.0	92.50	90.50	6,867.1	1,046.4	2,161.2	2,287.7	2.40	2.21	0.95	
9,937.0	93.20	90.50	6,862.3	1,045.5	2,257.1	2,382.4	0.73	0.73	0.00	
10,033.0	91.40	91.90	6,858.4	1,043.5	2,353.0	2,477.1	2.37	-1.88	1.46	
10,129.0	92.70	91.60	6,855.0	1,040.6	2,448.9	2,571.6	1.39	1.35	-0.31	
10,225.0	91.20	91.80	6,851.7	1,037.7	2,544.8	2,666.1	1.58	-1.56	0.21	
10,320.0	90.50	89.30	6,850.3	1,036.8	2,639.8	2,760.0	2.73	-0.74	-2.63	
10,416.0	90.20	88.20	6,849.7	1,038.9	2,735.8	2,855.3	1.19	-0.31	-1.15	
10,512.0	89.90	88.60	6,849.7	1,041.6	2,831.7	2,950.7	0.52	-0.31	0.42	
10,608.0	89.30	88.60	6,850.3	1,043.9	2,927.7	3,046.0	0.63	-0.63	0.00	
10,703.0	90.00	87.90	6,850.9	1,046.8	3,022.6	3,140.4	1.04	0.74	-0.74	
10,799.0	90.00	87.70	6,850.9	1,050.5	3,118.6	3,235.9	0.21	0.00	-0.21	
10,895.0	91.50	88.40	6,849.7	1,053.8	3,214.5	3,331.3	1.72	1.56	0.73	
10,990.0	90.30	90.90	6,848.2	1,054.4	3,309.5	3,425.4	2.92	-1.26	2.63	
11,086.0	89.10	90.20	6,848.7	1,053.5	3,405.5	3,520.3	1.45	-1.25	-0.73	
11,182.0	88.50	88.90	6,850.7	1,054.2	3,501.4	3,615.5	1.49	-0.63	-1.35	
11,278.0	88.50	88.60	6,853.2	1,056.3	3,597.4	3,710.7	0.31	0.00	-0.31	
11,373.0	89.30	89.50	6,855.0	1,057.9	3,692.4	3,805.0	1.27	0.84	0.95	
11,469.0	89.60	90.20	6,855.9	1,058.1	3,788.3	3,900.0	0.79	0.31	0.73	
11,564.0	91.20	89.30	6,855.3	1,058.5	3,883.3	3,994.1	1.93	1.68	-0.95	
11,660.0	91.80	89.10	6,852.8	1,059.9	3,979.3	4,089.3	0.66	0.63	-0.21	
11,755.0	92.20	88.20	6,849.4	1,062.1	4,074.2	4,183.6	1.04	0.42	-0.95	
11,850.0	91.30	88.90	6,846.5	1,064.5	4,169.1	4,277.9	1.20	-0.95	0.74	
11,945.0	90.40	89.30	6,845.1	1,066.0	4,264.1	4,372.1	1.04	-0.95	0.42	
12,041.0	90.90	89.10	6,844.0	1,067.4	4,360.1	4,467.3	0.56	0.52	-0.21	
12,136.0	90.70	88.90	6,842.7	1,069.0	4,455.1	4,561.6	0.30	-0.21	-0.21	
12,231.0	90.70	88.90	6,841.6	1,070.8	4,550.0	4,655.8	0.00	0.00	0.00	
12,326.0	90.40	88.90	6,840.6	1,072.7	4,645.0	4,750.1	0.32	-0.32	0.00	
12,422.0	90.40	89.10	6,840.0	1,074.3	4,741.0	4,845.4	0.21	0.00	0.21	
12,517.0	89.40	91.20	6,840.1	1,074.1	4,836.0	4,939.4	2.45	-1.05	2.21	
12,612.0	90.00	91.10	6,840.6	1,072.2	4,931.0	5,033.1	0.64	0.63	-0.11	

Company:	PDC Energy Inc. DJ Basin	Local Co-ordinate Reference:	Well Bunting 26O-332
Project:	SEC.26-T5N-R65W	TVD Reference:	WELL @ 4672.0ft (Original Well Elev)
Site:	Bunting 5N65W26P Pad Sec.26-T5N-R65W	MD Reference:	WELL @ 4672.0ft (Original Well Elev)
Well:	Bunting 26O-332	North Reference:	True
Wellbore:	Bunting 26O-332 Wellbore #1	Survey Calculation Method:	Minimum Curvature
Design:	Bunting 26O-332 Wellbore #1	Database:	US_EDM

Survey										
Measured Depth (ft)	Inclination (°)	Azimuth (°)	Vertical Depth (ft)	+N/-S (ft)	+E/-W (ft)	Vertical Section (ft)	Dogleg Rate (°/100usft)	Build Rate (°/100usft)	Turn Rate (°/100usft)	
12,708.0	90.80	90.70	6,840.0	1,070.7	5,027.0	5,127.9	0.93	0.83	-0.42	
12,803.0	90.70	90.00	6,838.7	1,070.1	5,122.0	5,221.9	0.74	-0.11	-0.74	
12,899.0	90.00	90.40	6,838.1	1,069.8	5,218.0	5,316.9	0.84	-0.73	0.42	
12,994.0	89.90	89.30	6,838.2	1,070.0	5,313.0	5,410.9	1.16	-0.11	-1.16	
13,090.0	90.40	88.90	6,838.0	1,071.5	5,408.9	5,506.2	0.67	0.52	-0.42	
13,186.0	91.30	89.80	6,836.5	1,072.6	5,504.9	5,601.3	1.33	0.94	0.94	
13,282.0	91.90	88.90	6,833.9	1,073.7	5,600.9	5,696.5	1.13	0.63	-0.94	
13,377.0	90.70	89.80	6,831.7	1,074.8	5,695.8	5,790.6	1.58	-1.26	0.95	
13,473.0	89.90	90.00	6,831.2	1,074.9	5,791.8	5,885.7	0.86	-0.83	0.21	
13,568.0	90.00	89.30	6,831.3	1,075.5	5,886.8	5,979.8	0.74	0.11	-0.74	
13,664.0	90.50	88.60	6,830.9	1,077.3	5,982.8	6,075.1	0.90	0.52	-0.73	
13,760.0	88.80	89.50	6,831.5	1,078.9	6,078.8	6,170.3	2.00	-1.77	0.94	
13,855.0	90.10	89.30	6,832.4	1,079.9	6,173.8	6,264.5	1.38	1.37	-0.21	
13,952.0	90.70	88.40	6,831.7	1,081.8	6,270.8	6,360.8	1.12	0.62	-0.93	
14,047.0	90.80	89.10	6,830.4	1,083.9	6,365.7	6,455.1	0.74	0.11	0.74	
14,143.0	90.80	89.50	6,829.1	1,085.0	6,461.7	6,550.3	0.42	0.00	0.42	
14,239.0	90.70	89.10	6,827.9	1,086.2	6,557.7	6,645.4	0.43	-0.10	-0.42	
14,335.0	89.00	90.40	6,828.1	1,086.6	6,653.7	6,740.5	2.23	-1.77	1.35	
14,430.0	89.00	89.10	6,829.8	1,087.1	6,748.7	6,834.6	1.37	0.00	-1.37	
14,526.0	90.00	89.10	6,830.6	1,088.6	6,844.7	6,929.8	1.04	1.04	0.00	
14,622.0	91.60	88.60	6,829.3	1,090.5	6,940.6	7,025.1	1.75	1.67	-0.52	
14,718.0	91.90	89.70	6,826.3	1,091.9	7,036.6	7,120.3	1.19	0.31	1.15	
14,849.0	91.90	89.70	6,822.0	1,092.6	7,167.5	7,250.0	0.00	0.00	0.00	
BHL 2008'FSL, 100'FEL, SEC.25										

Design Targets										
Target Name	Dip Angle (°)	Dip Dir. (°)	TVD (ft)	+N/-S (ft)	+E/-W (ft)	Northing (usft)	Easting (usft)	Latitude	Longitude	
SHL 865'FSL, 2405'FEL - hit/miss target - Shape - Point	0.00	0.00	1.0	0.0	0.0	1,377,142.40	3,242,529.71	40.365390	-104.629620	
BHL 2008'FSL, 100'FEL - survey misses target center by 428.6ft at 14849.0ft MD (6822.0 TVD, 1092.6 N, 7167.5 E) - Point	0.00	0.00	6,822.0	1,086.8	7,596.1	1,378,303.66	3,250,114.41	40.368370	-104.602360	

Survey Annotations					
Measured Depth (ft)	Vertical Depth (ft)	Local Coordinates		Comment	
		+N/-S (ft)	+E/-W (ft)		
7,126.1	6,777.3	1,084.6	-534.3	TPZ - 60° Incl in curve 1950'FSL, 2939'FEL, SEC.26	
7,642.0	6,878.7	1,088.0	-35.6	Deepest TVD Drilled - 6878.74' TVD	

Company:	PDC Energy Inc. DJ Basin	Local Co-ordinate Reference:	Well Bunting 26O-332
Project:	SEC.26-T5N-R65W	TVD Reference:	WELL @ 4672.0ft (Original Well Elev)
Site:	Bunting 5N65W26P Pad Sec.26-T5N-R65W	MD Reference:	WELL @ 4672.0ft (Original Well Elev)
Well:	Bunting 26O-332	North Reference:	True
Wellbore:	Bunting 26O-332 Wellbore #1	Survey Calculation Method:	Minimum Curvature
Design:	Bunting 26O-332 Wellbore #1	Database:	US_EDM

Checked By: _____ Approved By: _____ Date: _____