



Kerr-McGee Oil & Gas Onshore LP

A subsidiary of Anadarko Petroleum Corporation

1099 18th Street
Denver, CO 80202
720-929-6000

March 19, 2018

Julie Murphy
Director, Colorado Oil and Gas Conservation Commission
Department of Natural Resources
The Chancery Building
1120 Lincoln Street, Suite 801
Denver, CO 80203

Re: **30 Day Certification Letter - 318A.e**
COWBOY 21-8HZ (Doc #401542221)
Township 2 North, Range 67 West
Section 21: SENE
Unit Acreage: 960
Unit Spacing: 02N-67W – Sec 03: SWSW;
02N-67W – Sec 04: SESE;
02N-67W – Sec 09: E2E2;
02N-67W – Sec 10: W2W2;
02N-67W – Sec 15: W2W2;
02N-67W – Sec 16: E2E2;
02N-67W – Sec 21: E2NE, NESE
02N-67W – Sec 22: W2NW, NWSW
Weld County, Colorado

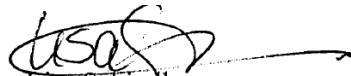
Dear Director Murphy:

Kerr-McGee Oil and Gas Onshore LP (“KMG”) hereby certifies that a thirty (30) day notice has been given by certified mail to all mineral owners in the proposed wellbore spacing unit. We have not received any objections to such well location, proposed spacing unit, or additional producing formation. KMG hereby respectfully requests approval of this boundary well.

If there are any questions or issues regarding this permit, please contact Lisa Schindler at (720) 929-3091.

Regards,

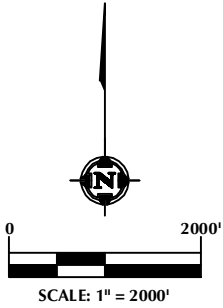
KERR-McGEE OIL AND GAS ONSHORE LP



Lisa Schindler
Sr. Regulatory Analyst

DISTANCE FROM COMPLETED
PORTION OF WELLBORE TO
NEAREST UNIT BOUNDARY= 993'

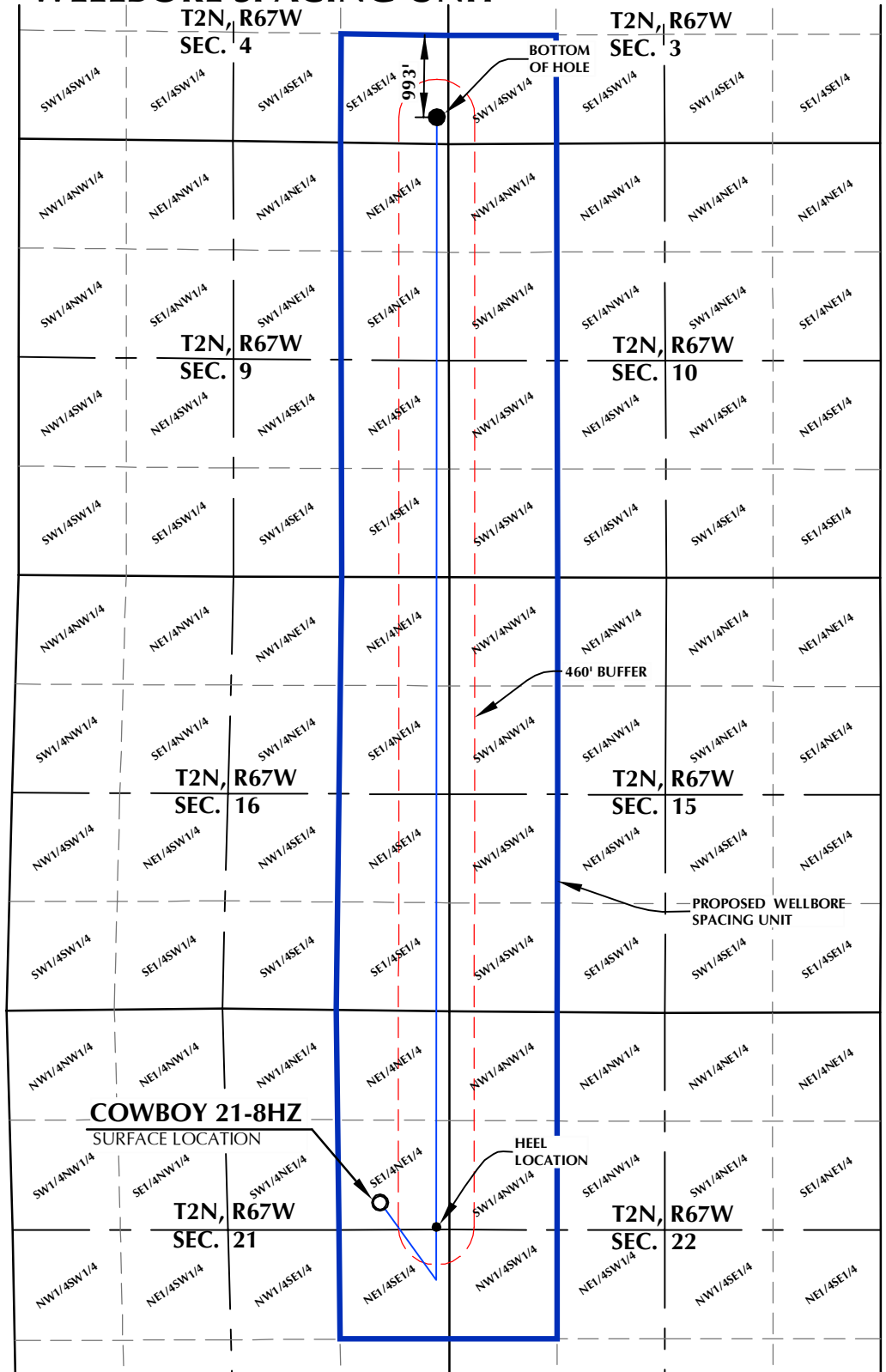
COWBOY 21-8HZ WELLBORE SPACING UNIT



SURFACE LOCATION: NAD 83
GROUND ELEVATION= 5040.1'
LATITUDE= 40.124674°
LONGITUDE= -104.889146°
LATITUDE= 40°07'28.826"
LONGITUDE= -104°53'20.925"
HEEL LOCATION: NAD 83
LATITUDE= 40.123852°
LONGITUDE= -104.886709°
LATITUDE= 40°07'25.867"
LONGITUDE= -104°53'12.153"
BOTTOM HOLE LOCATION: NAD 83
LATITUDE= 40.160816°
LONGITUDE= -104.886349°
LATITUDE= 40°09'38.938"
LONGITUDE= -104°53'10.856"

NOTES:

1. DRAWING LATITUDE AND LONGITUDE COORDINATES ARE NAD 83 (2011)(EPOCH:2010).
2. ELEVATION BASED ON NAVD88 (GEOID12B).
3. BASIS OF BEARING DERIVED FROM COLORADO COORDINATE SYSTEM OF 1983 NORTH ZONE.
4. ALL MEASURED DISTANCES ARE GRID. COMBINED SCALE FACTOR: .99972306 CALCULATED FROM THE N. 1/4 CORNER OF SECTION 21, T2N, R67W.



WELL PAD - COWBOY 21-4HZ

COWBOY 21-8HZ
WELLBORE SPACING UNIT
2334' FNL & 841' FEL SENE (SURFACE)
2620' FNL & 158' FEL SENE (HEEL)
LOCATED IN SECTION 21
330' FSL & 137' FEL SESE (BOTTOM)
LOCATED IN SECTION 4
T2N, R67W, 6TH P.M.
WELD COUNTY, COLORADO

**Kerr-McGee Oil &
Gas Onshore L.P.**
1099 18th Street
Denver, Colorado 80202



CONSULTING, LLC

SHERIDAN OFFICE
1095 Saberton Avenue
Sheridan, Wyoming 82801
Phone 307-674-0609

LOVELAND OFFICE
1635 Foxtrail Drive, Suite 204
Loveland, Colorado 80538
Phone 970-776-4331

DRAFTED BY:	LMO	CHECKED BY:	RKF
DATE DRAFTED:	1/24/18	DATE SURVEYED:	11/17/17
REVISED:		FILE NAME:	13-89