



# Kerr-McGee Oil & Gas Onshore LP

A subsidiary of Anadarko Petroleum Corporation

1099 18<sup>th</sup> Street  
Denver, CO 80202  
720-929-6000

March 19, 2018

Julie Murphy  
Director, Colorado Oil and Gas Conservation Commission  
Department of Natural Resources  
The Chancery Building  
1120 Lincoln Street, Suite 801  
Denver, CO 80203

Re: **30 Day Certification Letter - 318A.e**  
COWBOY 21-2HZ (Doc #401542207)  
Township 2 North, Range 67 West  
Section 21: SENE  
Unit Acreage: 320  
Unit Spacing: 02N-67W – Sec 09: SWSE;  
02N-67W – Sec 16: W2E2;  
02N-67W – Sec 21: W2NE, NWSE  
Weld County, Colorado

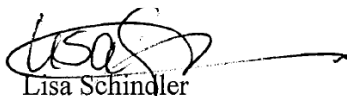
Dear Director Murphy:

Kerr-McGee Oil and Gas Onshore LP (“KMG”) hereby certifies that a thirty (30) day notice has been given by certified mail to all mineral owners in the proposed wellbore spacing unit. We have not received any objections to such well location, proposed spacing unit, or additional producing formation. KMG hereby respectfully requests approval of this boundary well.

If there are any questions or issues regarding this permit, please contact Lisa Schindler at (720) 929-3091.

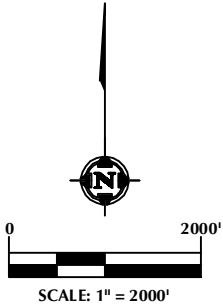
Regards,

**KERR-McGEE OIL AND GAS ONSHORE LP**

  
Lisa Schindler  
Sr. Regulatory Analyst

DISTANCE FROM COMPLETED  
PORTION OF WELLBORE TO  
NEAREST UNIT BOUNDARY= 586'

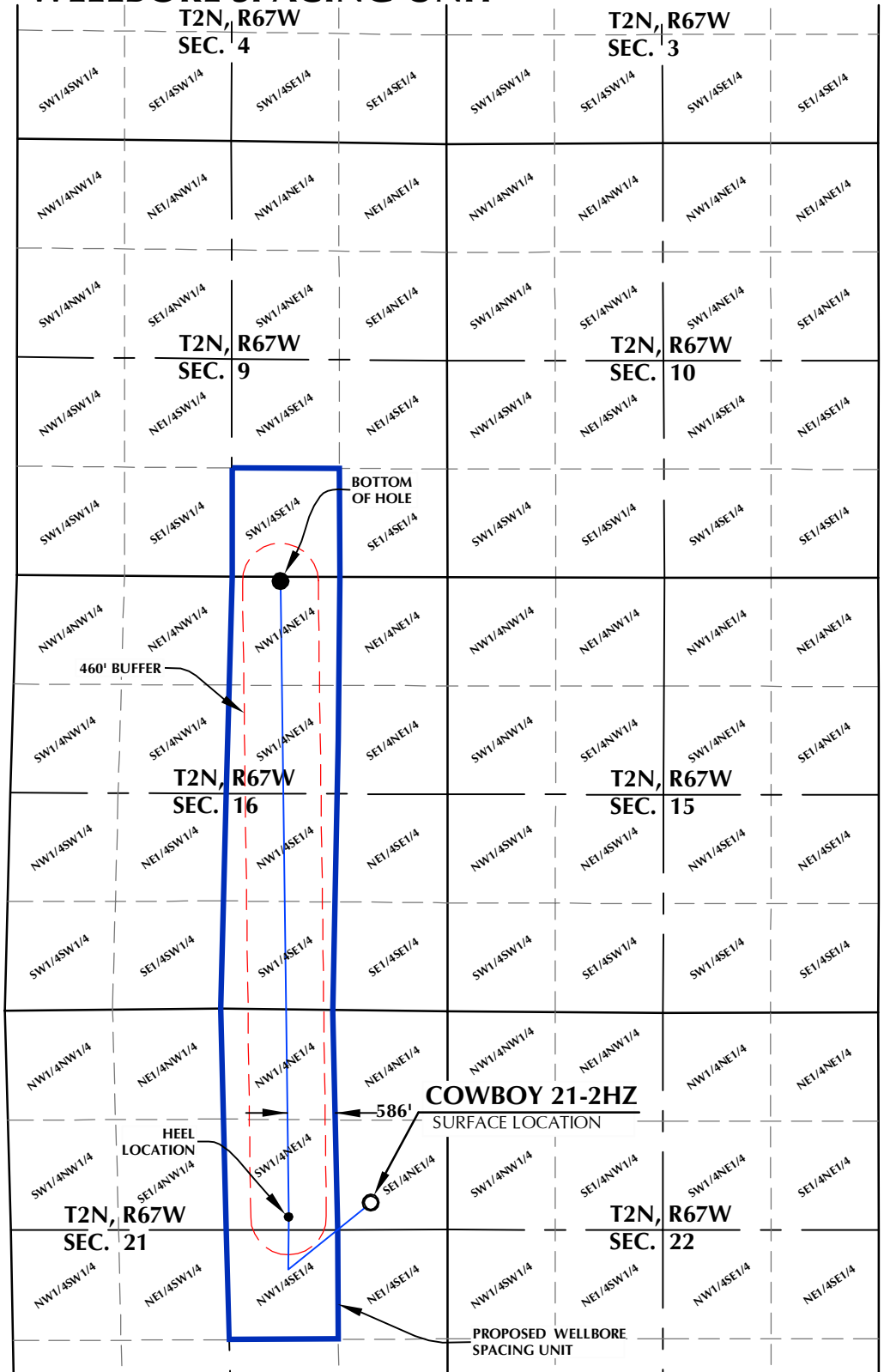
# COWBOY 21-2HZ WELLBORE SPACING UNIT



SURFACE LOCATION: NAD 83  
GROUND ELEVATION= 5041.3'  
LATITUDE= 40.124676°  
LONGITUDE= -104.889468°  
LATITUDE= 40°07'28.832"  
LONGITUDE= -104°53'22.084"  
HEEL LOCATION: NAD 83  
LATITUDE= 40.124221°  
LONGITUDE= -104.893043°  
LATITUDE= 40°07'27.196"  
LONGITUDE= -104°53'34.953"  
BOTTOM HOLE LOCATION: NAD 83  
LATITUDE= 40.145397°  
LONGITUDE= -104.893209°  
LATITUDE= 40°08'43.429"  
LONGITUDE= -104°53'35.552"

## NOTES:

1. DRAWING LATITUDE AND LONGITUDE COORDINATES ARE NAD 83 (2011)(EPOCH:2010).
2. ELEVATION BASED ON NAVD88 (GEOID12B).
3. BASIS OF BEARING DERIVED FROM COLORADO COORDINATE SYSTEM OF 1983 NORTH ZONE.
4. ALL MEASURED DISTANCES ARE GRID. COMBINED SCALE FACTOR: .99972306 CALCULATED FROM THE N. 1/4 CORNER OF SECTION 21, T2N, R67W.



## WELL PAD - COWBOY 21-4HZ

COWBOY 21-2HZ  
WELLBORE SPACING UNIT  
2335' FNL & 931' FEL SENE (SURFACE)  
2520' FNL & 1930' FEL SWNE (HEEL)  
LOCATED IN SECTION 21  
51' FNL & 2029' FEL NWNE (BOTTOM)  
LOCATED IN SECTION 16  
T2N, R67W, 6TH P.M.  
WELD COUNTY, COLORADO

**Kerr-McGee Oil &  
Gas Onshore L.P.**  
1099 18th Street  
Denver, Colorado 80202



## CONSULTING, LLC

SHERIDAN OFFICE 1095 Saberton Avenue  
Sheridan, Wyoming 82801  
Phone 307-674-0609  
LOVELAND OFFICE 1635 Foxtrail Drive, Suite 204  
Loveland, Colorado 80538  
Phone 970-776-4331

DRAFTED BY:	LMO	CHECKED BY:	RKF
DATE DRAFTED:	1/24/18	DATE SURVEYED:	11/17/17
REVISED:		FILE NAME:	13-89