



Temperature (Quick Look)
Gamma Ray
Casing Collar Log

Company TEP Rocky Mountain LLC		Well Federal RU 23-17		Field Rulison		County Garfield		State Colorado	
Company TEP Rocky Mountain LLC		Well Federal RU 23-17		Field Rulison		County Garfield		State Colorado	
Location:		API #: 05-045-23739		Other Services					
1888' FSL & 2440' FWL NESW		SEC 17 TWP 7S RGE 93W		Elevation					
Permanent Datum		Ground Level		Elevation		8365.6'			
Log Measured From		Kelly Bushing		24 FT		K.B. 8389.6'			
Drilling Measured From		Kelly Bushing				D.F. 8388.6'			
						G.L. 8365.6'			
Date	15-MAR-2018								
Run Number	One								
Depth Driller	10425 FT								
Depth Logger	10368 FT								
Bottom Logged Interval	10368 FT								
Top Log Interval	Surface								
Open Hole Size	8.750"								
Type Fluid	Fresh Water								
Density / Viscosity	8.34 lb/gal								
Max. Recorded Temp.	25.1°F								
E. estimated Cement Top	4810 FT								
Time Well Ready	ROA								
Time Logger on Bottom	14.45								
E. equipment Number	HD-0359								
Location	Grand Junction, CO								
Recorded By	J. Donnelly								
Witnessed By	D. Leatherman								
Borehole Record		Tubing Record							
Run Number	Bit	From	To	Size	Weight	From	To		
Casing Record	Size (in)	Wgt (lbs/ft)	Grade	Top	Bottom				
Surface Casing	9 5/8	32.3	H-40	Surface	1102 FT				
Intermediate #1	4 1/2	11.6	P-110	Surface	10384 FT				
Intermediate #2									
Inner									

<<< Fold Here >>>

All interpretations are opinions based on inferences from electrical or other measurements and we cannot and do not guarantee the accuracy or correctness of any interpretation, and we shall not, except in the case of gross or willful negligence on our part, be liable or responsible for any loss, costs, damages, or expenses incurred or sustained by anyone resulting from any interpretation made by any of our officers, agents or employees. These interpretations are also subject to our general terms and conditions set out in our current Price Schedule.

Comments

Log ran as per customer request
Depth referenced to Kelly Bushing at 24 FT
Marker Joint logged from 6654 FT to 6675 FT
Log ran from 10368 FT to Surface
Log ran with 0 PSI Surface Induced Pressure

Thank you for choosing Reliance Oilfield Services, LLC!!



Main Pass (Quick Look)

Recorded with 0 PSI Surface Induced Pressure

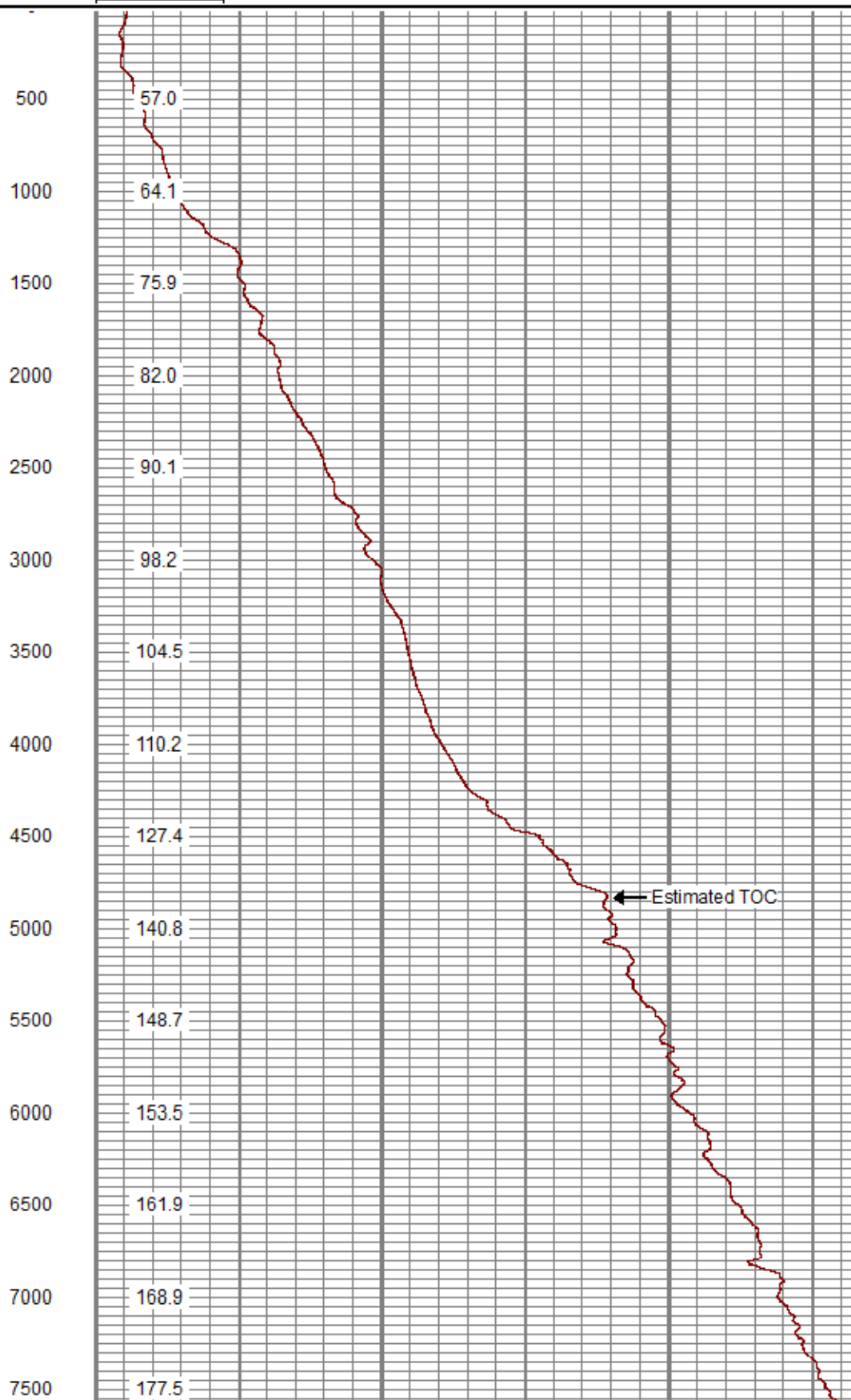
Database File	new folder (5)\tep_federal ru 23-17_temp_03-15-18.db
Dataset Pathname	mainQL
Presentation Format	ros_temp_ql_tep
Dataset Creation	Thu Mar 15 16:18:43 2018
Charted by	Depth in Feet scaled 1:10000

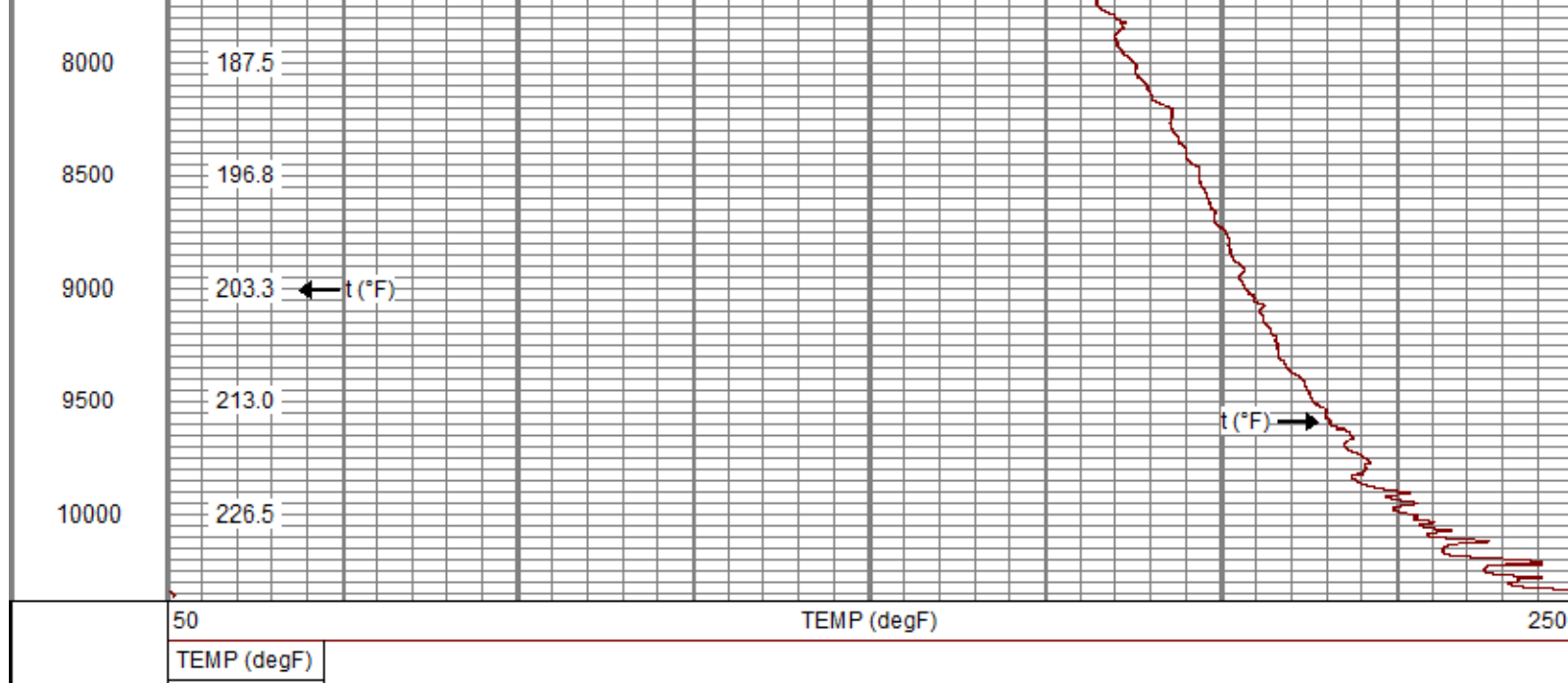
50


TEMP (degF)


250

TEMP (degF)






Sensor	Offset (ft)	Schematic	Description	Length (ft)	O.D. (in)	Weight (lb)
CCL	3.70		Titan CHD-14375 GO Titan 1-7/16" Assembled Electric Cable Head w/ 1" Fishing Neck	1.03	1.44	3.60
			UW AGS-001 (211461) Sondex Adapter - GO Box to Sondex Pin	0.21	1.69	1.00
			UW XTU-002 (10017430) Crossover Ultrawire Toolbus to Ultralink	1.58	1.69	6.50
			UW CCL-028 (10018437) 3-1/8" Ultrawire Casing Collar Locator	1.61	3.13	36.00
GR	1.76		UW PGR-020 (10013899) Production Gamma Ray	1.92	1.69	9.50

TEMP	0.37		UW PRT-016 (10025093) Platinum Resistance Thermometer	1.04	1.69	5.20
TSTAMP	0.00		UW BUL-006 (10019616) Sondex Ultrawire Bullnose Terminator Sub	0.22	1.69	1.20
Dataset: TEP_Federal RU 23-17_TEMP_03-15-18.db: field/well/run1/mainQL Total length: 7.62 ft Total weight: 63.00 lb O.D.: 3.13 in						

Calibration Report					
Database File	C:\ProgramData\Warrior\Data\New folder (5)\TEP_Federal RU 23-17_TEMP_03-15-18.db				
Dataset Pathname	mainQL				
Dataset Creation	Thu Mar 15 16:18:43 2018				
Temperature Calibration Report					
Serial Number:		10025093			
Tool Model:		016			
Performed:		Sun Nov 12 14:20:23 2017			
Point #	Reading		Reference		
1	13006.00	cps	68.00	degF	
2	18181.00	cps	104.00	degF	
3	29634.00	cps	176.00	degF	
4	41077.00	cps	248.00	degF	
5	52560.00	cps	320.00	degF	
6	58409.00	cps	356.00	degF	
7		cps		degF	
8		cps		degF	
9		cps		degF	
10		cps		degF	
Gamma Ray Calibration Report					
Serial Number:		10013899			
Tool Model:		020			
Performed:		Sun Nov 12 06:37:04 2017			
Calibrator Value:		637.0	GAPI		
Background Reading:		78.8	cps		
Calibrator Reading:		1069.9	cps		
Sensitivity:		0.6427	GAPI/cps		

	Company	TEP Rocky Mountain LLC
	Well	Federal RU 23-17
	Field	Rulison
	County	Garfield
	State	Colorado