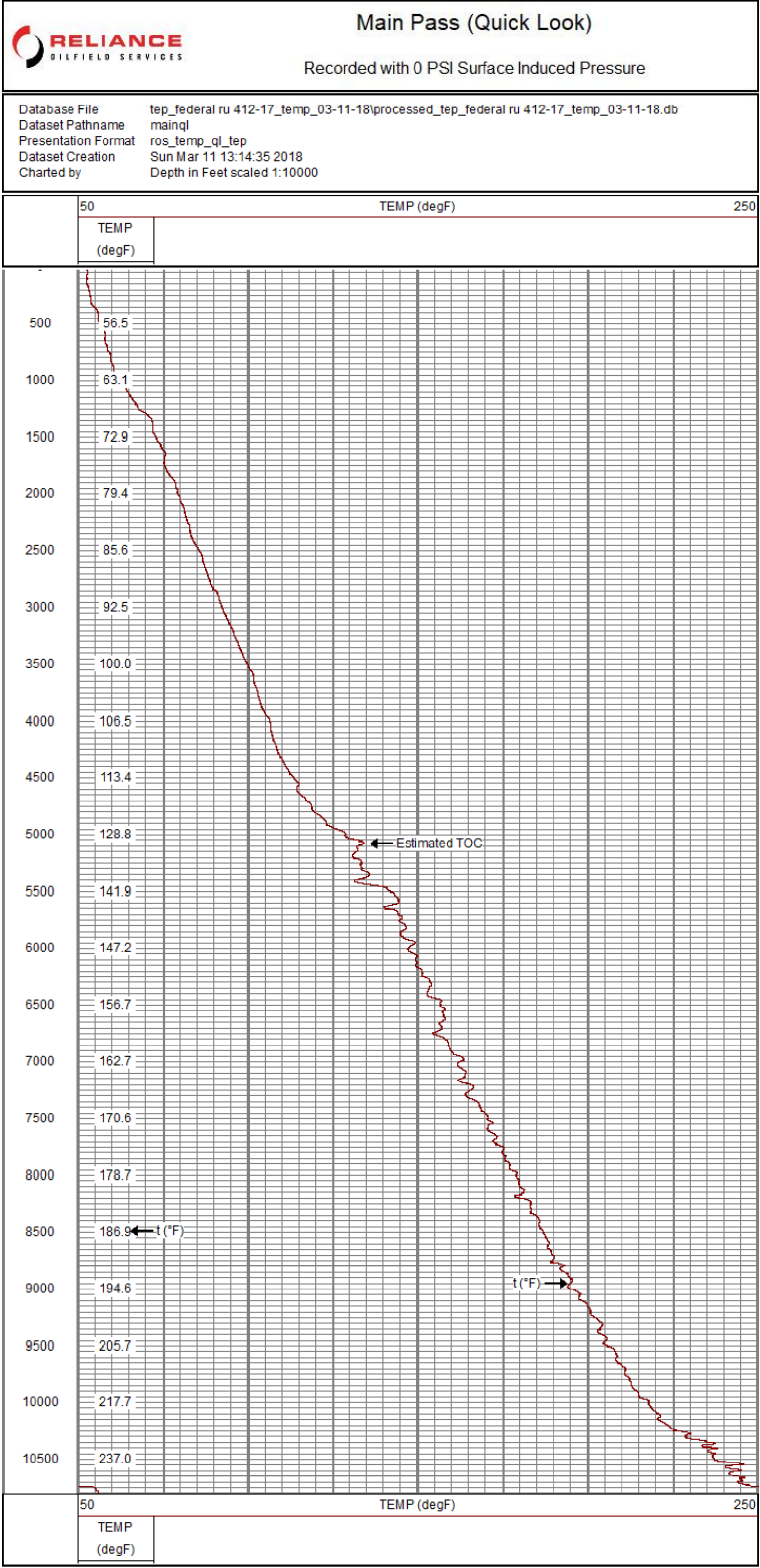

		<b>Temperature (Quick Look)</b> <b>Gamma Ray</b> <b>Casing Collar Log</b>	
Company TEP Rocky Mountain LLC Well Federal RU 412-17 Field Rulison County Garfield State Colorado		Company TEP Rocky Mountain LLC Well Federal RU 412-17 Field Rulison County Garfield State Colorado	
Location: 1882 FSL & 2432 FWL NESW SEC 17 TWP 7S RGE 93W Permanent Datum Ground Level Elevation 8365.6' Log Measured From Kelly Bushing 24 FT Drilling Measured From Kelly Bushing Other Services: --- Elevation K A 8389.6' D.F. 8388.6' G.L. 8365.6'			
Date	11-MAR-2018		
Run Number	One		
Depth Driller	10842 FT		
Depth Logger	10786 FT		
Bottom Logged Interval	10786 FT		
Top Log Interval	Surface		
Open Hole Size	8.750"		
Type Fluid	Fresh Water		
Density / Viscosity	8.34 lb/gal		
Max. Recorded Temp.	256°F		
Estimated Cement Top	5050 FT		
Time Well Ready	ROA		
Time Logger on Bottom	06:00		
Equipment Number	HD-0359		
Location	Grand Junction, CO		
Recorded By	A. Elsworth		
Witnessed By	D. Leatherman		
Borehole Record		Tubing Record	
Run Number	Bit	From	To
		Size	Weight
		From	To
Casing Record	Size (in)	Wdth (lbs/ft)	Grade
Surface Casing	9.518	32.3	H-40
Intermediate #1	4.1/2	11.6	P-110
Intermediate #2			Surface
Liner			Bottom

<<< Fold Here >>>	
All interpretations are opinions based on inferences from electrical or other measurements and we cannot and do not guarantee the accuracy or correctness of any interpretation, and we shall not, except in the case of gross or willful negligence on our part, be liable or responsible for any loss, costs, damages, or expenses incurred or sustained by anyone resulting from any interpretation made by any of our officers, agents or employees. These interpretations are also subject to our general terms and conditions set out in our current Price Schedule.	
Comments	
<p>Log ran as per customer request</p> <p>Depth referenced to Kelly Bushing at 24 FT</p> <p>Marker Joint logged from 6816 FT to 6836 FT</p> <p>Log ran from 10786 FT to Surface</p> <p>Log ran with 0 PSI Surface Induced Pressure</p> <p>Thank you for choosing Reliance Oilfield Services, LLC!!</p>	



Sensor	Offset (ft)	Schematic	Description	Length (ft)	O.D. (in)	Weight (lb)
GR	3.37		Titan CHD-14375 GO Titan 1-7/16" Assembled Electric Cable Head w/ 1" Fishing Neck	1.03	1.44	3.60
			UW AGS-001 (211461) Sondex Adapter - GO Box to Sondex Pin	0.21	1.69	1.00
			UW XTU-002 (10017430) Crossover Ultrawire Toolbus to Ultralink	1.58	1.69	6.50
			UW PGR-020 (10019371) Production Gamma Ray	1.92	1.69	9.50
CCL	1.77		UW CCL-028 (10024821) 3-1/8" Ultrawire Casing Collar Locator	1.61	3.13	36.00
TEMP	0.37		UW PRT-016 (10025093) Platinum Resistance Thermometer	1.04	1.69	5.20
TSTAMP	0.00		UW BUL-006 (10019616) Sondex Ultrawire Bullnose Terminator Sub	0.22	1.69	1.20
Dataset:		processed_tep_federal ru 412-17_temp_03-11-18.db: field/well/run1/main1				
Total length:		7.62 ft				
Total weight:		63.00 lb				
O.D.:		3.13 in				

Calibration Report					
Database File	C:\ProgramData\Warrior\Data\TEP_Federal RU 412-17_TEMP_03-11-18\PROCESSED_TEP_Federal RU 412-17_TEMP_03-11-18.db				
Dataset Pathname	main1				
Dataset Creation	Sun Mar 11 07:14:07 2018				
Temperature Calibration Report					
Serial Number:		10025093			
Tool Model:		016			
Performed:		Sun Nov 12 13:20:23 2017			
Point #	Reading		Reference		
1	13006.00	cps	68.00	degF	
2	18181.00	cps	104.00	degF	
3	29634.00	cps	176.00	degF	
4	41077.00	cps	248.00	degF	
5	52560.00	cps	320.00	degF	
6	58409.00	cps	356.00	degF	
7		cps		degF	
8		cps		degF	
9		cps		degF	
10		cps		degF	
Gamma Ray Calibration Report					
Serial Number:		10019371			
Tool Model:		020			
Performed:		Sun Nov 12 05:37:04 2017			
Calibrator Value:		637.0	GAPI		
Background Reading:		78.8	cps		
Calibrator Reading:		1069.9	cps		

		Company TEP Rocky Mountain LLC Well Federal RU 412-17 Field Rulison County Garfield State Colorado
--	--	--