

NOTES:

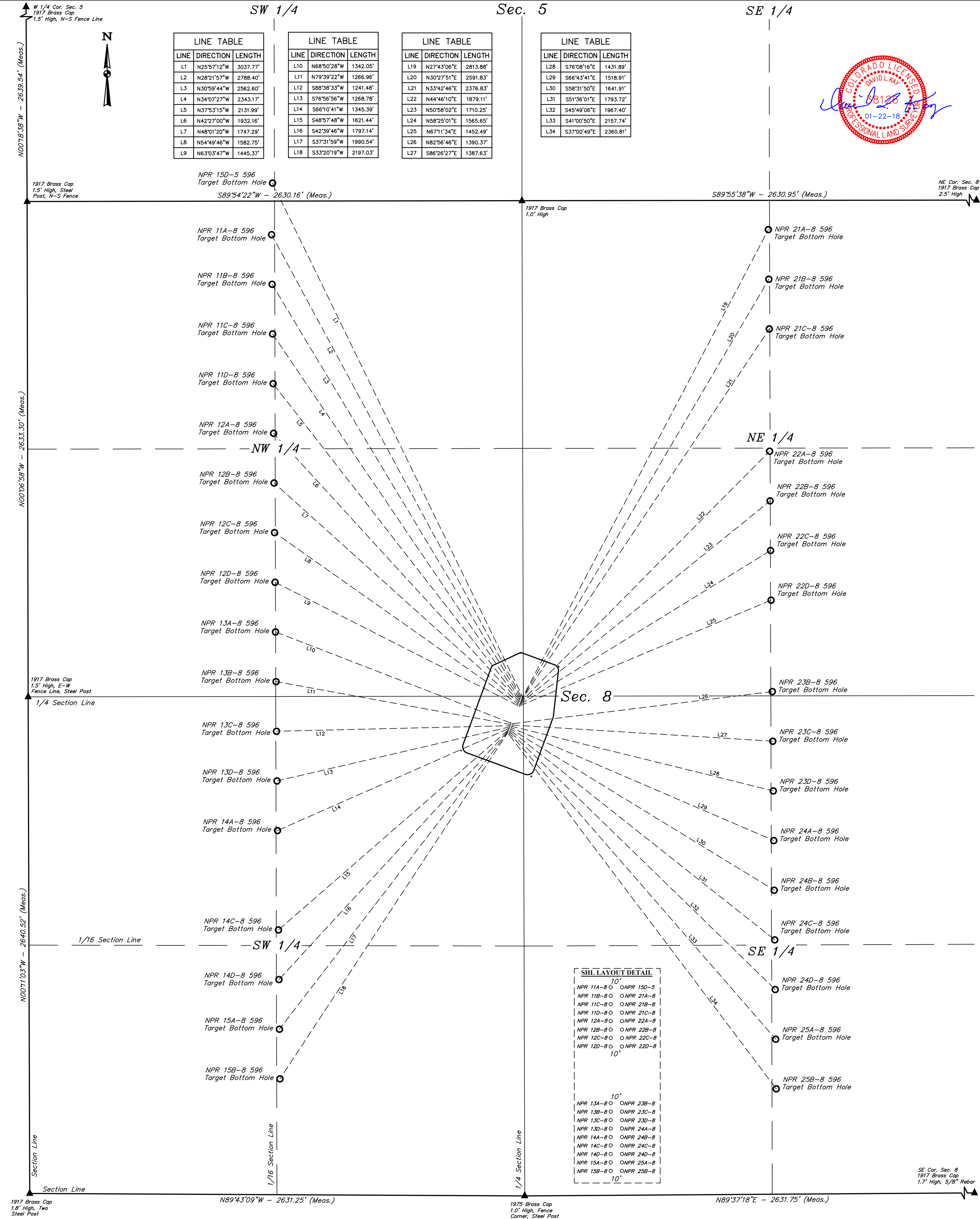


UELS, LLC
Corporate Office * 85 South 200 East
Vernal, UT 84078 * (435) 789-1017

Caerus Oil & Gas LLC

NPR K08 596 PAD
E 1/2 W 1/2, SECTION 8, T5S, R96W, 6th P.M.
GARFIELD COUNTY, COLORADO

SURVEYED BY	BART HUNTING, J.F.	12-20-17	SCALE
DRAWN BY	M.D.	01-10-18	1" = 50'
TARGET BOTTOM HOLE DRAWING			FIGURE #6



NOTES:

Caerus Oil & Gas LLC

NPR K08 596 PAD
E 1/2 W 1/2, SECTION 8, T5S, R96W, 6th P.M.
GARFIELD COUNTY, COLORADO

SURVEYED BY	BART HUNTING, J.F.	12-20-17	SCALE
DRAWN BY	M.D.	01-10-18	1" = 300'
MULTI-WELL PLAN			FIGURE #7



UELS, LLC
Corporate Office * 85 South 200 East
Vernal, UT 84078 * (435) 789-1017