

CORE LABORATORIES, INC.



Petroleum Reservoir Engineering

COMPANY TOM VESSELS FIELD WILDCAT FILE RP-2-4491  
WELL NO. 1 BAUMAN RANCH COUNTY WELD DATE 5-8-73  
LOCATION NE NW SEC 20-T11N-R61W STATE COLORADO ELEV. 5257' KB

**CORE-GAMMA CORRELATION**

These analyses, opinions or interpretations are based on observations and material supplied by the client to whom, and for whose exclusive and confidential use, this report is made. The interpretations or opinions expressed represent the best judgment of Core Laboratories, Inc. and its officers and employees, assume no warranty or representation as to the probability, proper operation, or profitability of any oil, gas or other mineral well or sand in connection with which such report is used or relied upon.

VERTICAL SCALE: 5" = 100'

**CORE-GAMMA SURFACE LOG**  
(PATENT APPLIED FOR)GAMMA RAY  
RADIATION INCREASE →**COREGRAPH**

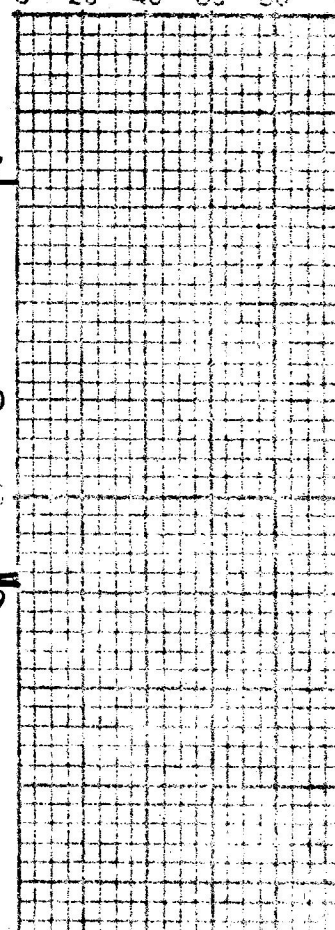
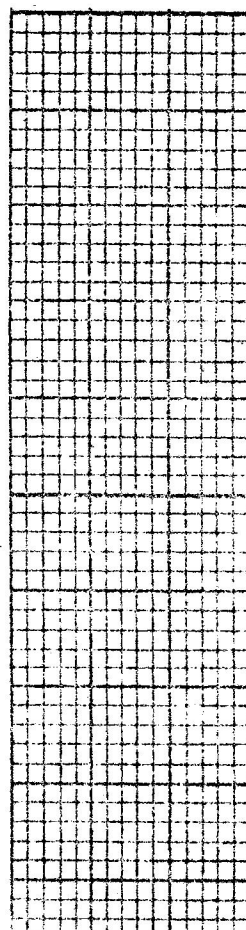
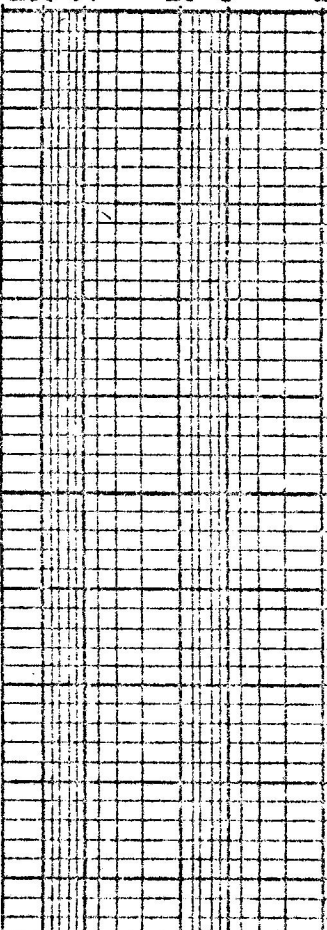
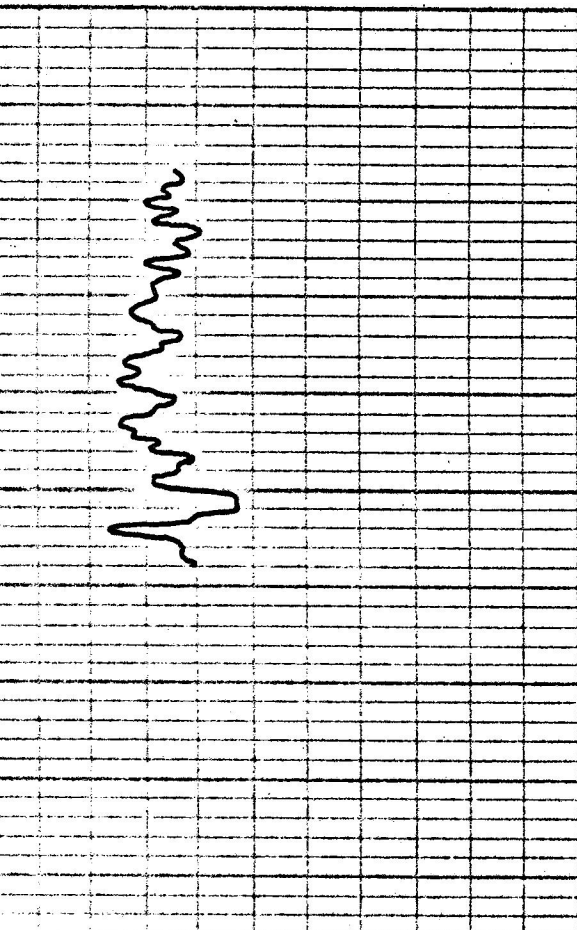
TOTAL WATER ———  
PERCENT TOTAL WATER  
80 60 40 20 0

PERMEABILITY ———  
MILLIDARCYs

100 50 10 5 1

POROSITY ———  
PERCENTOIL SATURATION ———  
PERCENT PORE SPACE

0 20 40 60 80



7717

7740

7750

7759