

T9N, R59W, 6th P.M.

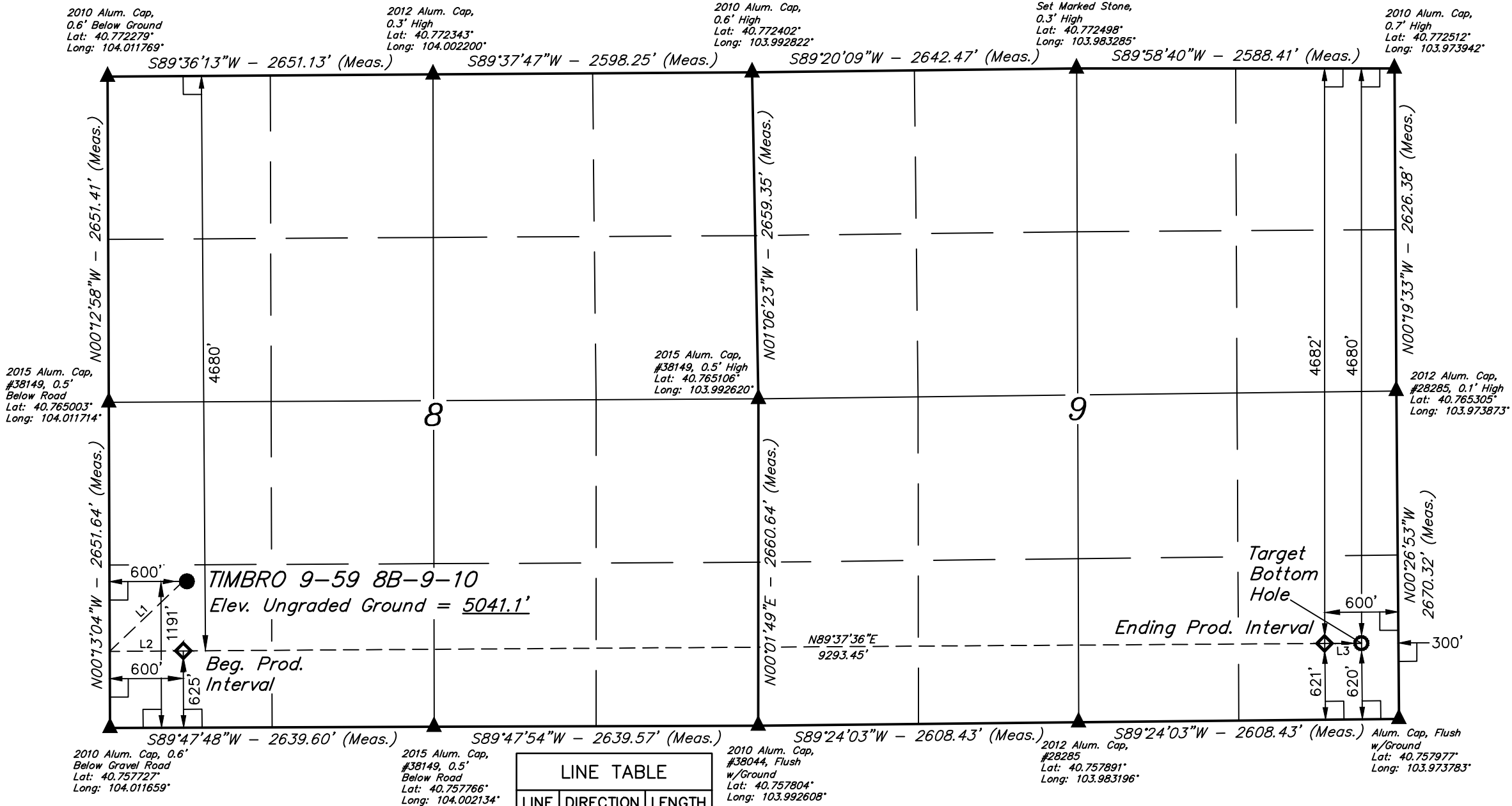
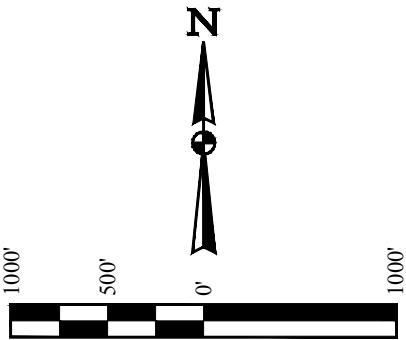
BISON OIL & GAS II

TIMBRO 9-59 8B-9-10
SW 1/4 SW 1/4, SECTION 8, T9N, R59W, 6th P.M.
WELD COUNTY, COLORADO

BASIS OF BEARINGS

BASIS OF ELEVATION

SPOT ELEVATION LOCATED AT THE NORTHEAST CORNER OF SECTION 15, T9N, R58W, 6th P.M. TAKEN FROM THE GATEHOOK SPRING, QUADRANGLE, COLORADO, WELD COUNTY, 7.5 MINUTE QUAD (TOPOGRAPHIC MAP) PUBLISHED BY THE UNITED STATES DEPARTMENT OF THE INTERIOR, GEOLOGICAL SURVEY. SAID ELEVATION IS MARKED AS BEING 4679 FEET.



LINE TABLE		
LINE	DIRECTION	LENGTH
L1	S46°22'12\"W	825.82'
L2	N89°37'36\"E	600.00'
L3	N89°37'36\"E	300.00'

SURFACE LOCATION 1191' FSL 600' FWL	BEG. PROD. INTERVAL 4680' FNL 625' FSL 600' FWL	ENDING PROD. INTERVAL 4682' FNL 621' FSL 600' FEL	TARGET BOTTOM HOLE 4680' FNL 620' FSL 300' FEL
NAD 83 (SURFACE LOCATION)	NAD 83 (BEG. PROD. INTERVAL)	NAD 83 (ENDING PROD. INTERVAL)	NAD 83 (TARGET BOTTOM HOLE)
LATITUDE = 40°45'39.61\" (40.761004)	LATITUDE = 40°45'34.02\" (40.759451)	LATITUDE = 40°45'34.78\" (40.759661)	LATITUDE = 40°45'34.80\" (40.759668)
LONGITUDE = 104°00'34.27\" (104.009519)	LONGITUDE = 104°00'34.23\" (104.009507)	LONGITUDE = 103°58'33.49\" (103.975969)	LONGITUDE = 103°58'29.59\" (103.974887)
NAD 27 (SURFACE LOCATION)	NAD 27 (BEG. PROD. INTERVAL)	NAD 27 (ENDING PROD. INTERVAL)	NAD 27 (TARGET BOTTOM HOLE)
LATITUDE = 40°45'39.66\" (40.761016)	LATITUDE = 40°45'34.07\" (40.759464)	LATITUDE = 40°45'34.83\" (40.759674)	LATITUDE = 40°45'34.85\" (40.759680)
LONGITUDE = 104°00'32.46\" (104.009016)	LONGITUDE = 104°00'32.41\" (104.009003)	LONGITUDE = 103°58'31.68\" (103.975466)	LONGITUDE = 103°58'27.78\" (103.974383)
STATE PLANE NAD 83 (CO. NORTH)	STATE PLANE NAD 83 (CO. NORTH)	STATE PLANE NAD 83 (CO. NORTH)	STATE PLANE NAD 83 (CO. NORTH)
N: 1523549.05 E: 3412884.28	N: 1522983.41 E: 3412897.13	N: 1523217.94 E: 3422185.53	N: 1523225.51 E: 3422485.36
STATE PLANE NAD 27 (CO. NORTH)	STATE PLANE NAD 27 (CO. NORTH)	STATE PLANE NAD 27 (CO. NORTH)	STATE PLANE NAD 27 (CO. NORTH)
N: 523546.92 E: 2413034.76	N: 522981.29 E: 2413047.61	N: 523215.87 E: 2422336.23	N: 523223.44 E: 2422636.08

PDOP = 1.4

CERTIFICATE

THIS IS TO CERTIFY THAT THE ABOVE PLAT WAS PREPARED FROM FIELD NOTES OF ACTUAL SURVEYS MADE BY ME OR UNDER MY SUPERVISION, AND THAT THE SAME ARE TRUE AND CORRECT TO THE BEST OF MY KNOWLEDGE AND BELIEF.

REGISTERED LAND SURVEYOR
REGISTRATION NO. 28285
STATE OF COLORADO
EXPIRATION DATE 03-31-18

REV: 1 03-27-18 C.IVIE (QTR QTR CHANGE)

LEGEND:

- 90° SYMBOL
- PROPOSED WELLHEAD.
- PRODUCTION INTERVAL.
- TARGET BOTTOM HOLE.
- SECTION CORNERS LOCATED. (NAD 83)



UELS, LLC
Corporate Office * 85 South 200 East
Vernal, UT 84078 * (435) 789-1017

SURVEYED BY	JONATHON BAYLIFF	01-04-18	SCALE
DRAWN BY	C.IVIE	02-22-18	1" = 1000'

WELL LOCATION PLAT