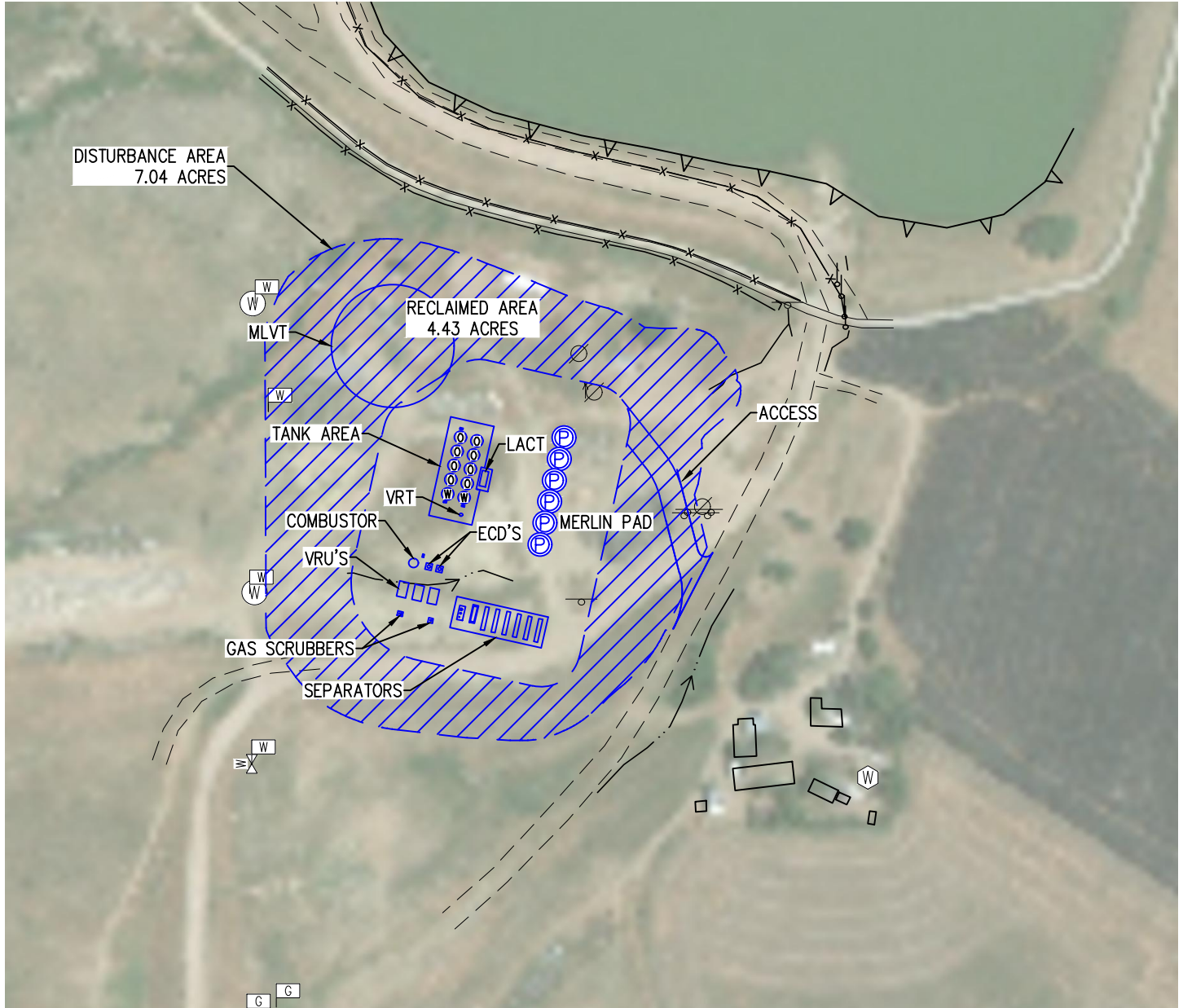


FACILITY LAYOUT DRAWING MERLIN PAD

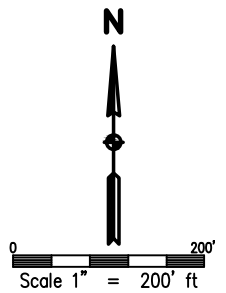
SW 1/4 NW 1/4 SECTION 29, TOWNSHIP 6 NORTH, RANGE 67 WEST, 6TH P.M.



- PROPOSED WELL HEAD
- EXISTING WELL HEAD
- ELECTRIC PANEL
- GAS VALVE

- WATER MARKER
- GAS MARKER

NOTE: PROPOSED FEATURES SHOWN IN BLUE



DISTURBED/RECLAIMED AREAS

TOTAL DISTURBED AREA OF LOCATION= 7.04 ACRES
TOTAL DISTURBED AREA OF LOCATION AFTER RECLAMATION= 2.61 ACRES



DRAWN BY RPM	CHECKED BY AAD
INITIAL SUBMITTAL 2/14/2018	
REVISED 3/13/2018	
DRAWING SIZE 8.5" X 11"	
JOB NO. EXT06N67W30-02	
SHEET 1 OF 1	

BASLINE
Engineering - Planning - Surveying

4007 S. LINCOLN AVENUE, SUITE 405 • LOVELAND, COLORADO 80537
P: 970.363.7800 • F: 970.363.7801 • www.baselinescorp.com