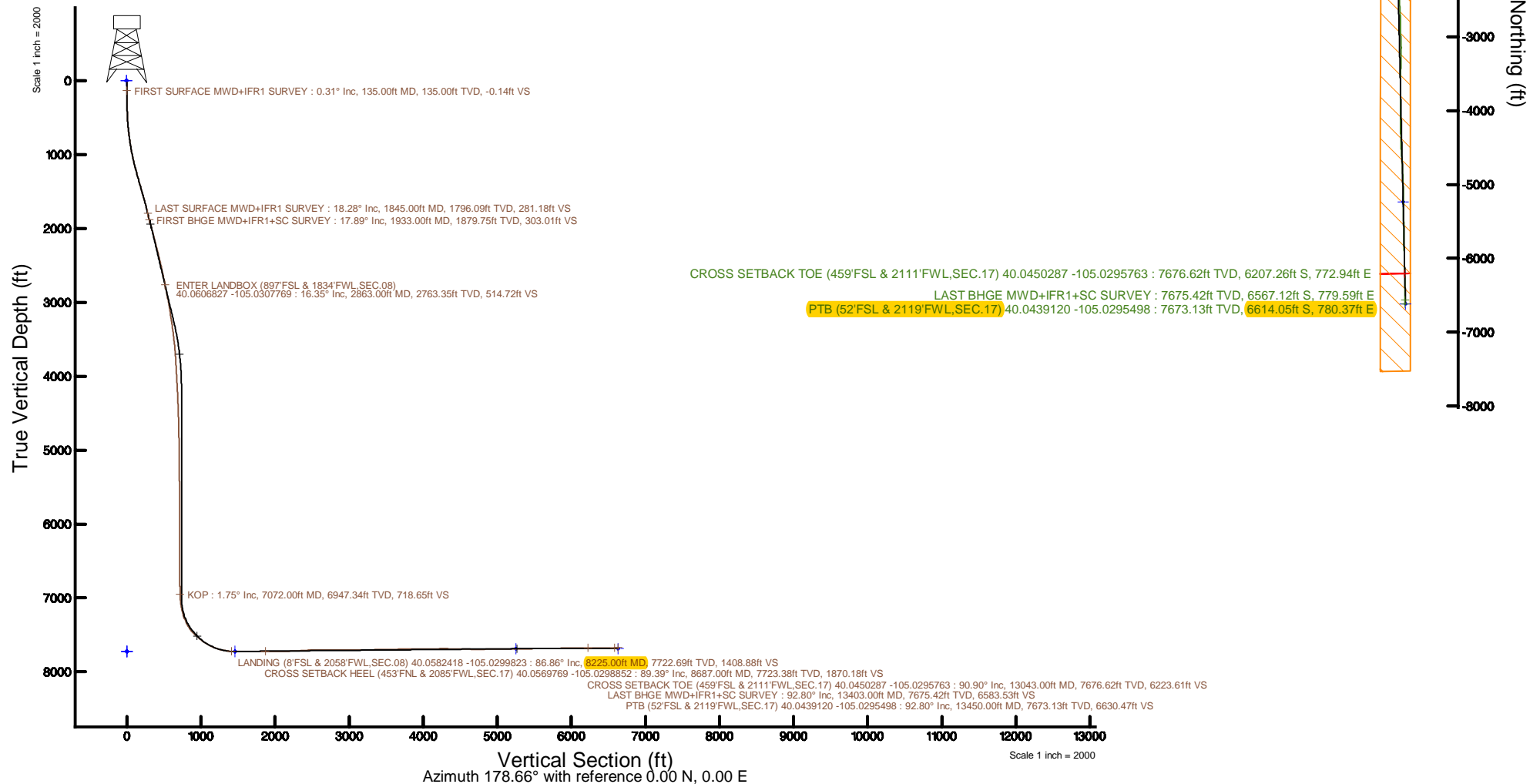


Location:	COLORADO	Slot:	SLOT#18 PAPA JO 2-25 36N-17HZ(1402FSL & 1399FWL;SEC.08)
Field:	WELD COUNTY (UTM/TRUE NORTH)	Well:	PAPA JO 2-25 36N-17HZ
Facility:	SEC.08-T1N-R68W	Wellbore:	PAPA JO 2-25 36N-17HZ PWB
Plot reference Wellpath is PAPA JO 2-25 36N-17HZ PWP Rev-A.0			
True vertical depths are referenced to PD 564 (26) (RT)			
Measured depths are referenced to PD 564 (26) (RT)			
PD 564 (26) (RT) to Mean Sea Level: 5089 feet			
Mean Sea Level to Mud to Air (At Slot: SLOT#18 PAPA JO 2-25 36N-17HZ(1402FSL & 1399FWL;SEC.08)) 0 feet			
Coordinates are in feet referenced to Slot			
		Grid System:	NAD83 / UTM Zone 13 North, US feet
		* = Wellpath was transformed from a different geoidic datum	
		North Reference: True north	
		Scale: True distance	
		Depths are in feet	
		Created by: painsear on 2018-01-10	
		Database: WA_DEN_Anadarko_Dein	



REFERENCE WELLPATH IDENTIFICATION			
Operator	KERR-MCGEE OIL & GAS ONSHORE LP (WA)	Slot	SLOT#18 PAPA JO 2-25 36N-17HZ(1402'FSL & 1399'FWL,SEC.08)
Area	COLORADO	Well	PAPA JO 2-25 36N-17HZ
Field	WELD COUNTY (UTM/TRUE NORTH)	Wellbore	PAPA JO 2-25 36N-17HZ AWP
Facility	SEC.08-T1N-R68W		

REPORT SETUP INFORMATION			
Projection System	NAD83 / UTM Zone 13 North, US feet	Software System	WellArchitect® 5.0
North Reference	True	User	Painsetr
Scale	0.999600	Report Generated	1/18/2018 at 1:27 PM
Convergence at slot	0.03° West	Database/Source file	WA_DEN_Anadarko_Defn/PAPA_JO_2-25_36N-17HZ_AWP.xml

WELLPATH LOCATION						
	Local coordinates		Grid coordinates		Geographic coordinates	
	North[ft]	East[ft]	Easting[US ft]	Northing[US ft]	Latitude	Longitude
Slot Location	-842.21	-838.87	1631368.88	14549336.73	40°03'43.445"N	105°01'56.413"W
Facility Reference Pt			1632207.69	14550178.32	40°03'51.768"N	105°01'45.624"W
Field Reference Pt			1698235.31	14552047.82	40°04'09.600"N	104°47'36.000"W

WELLPATH DATUM			
Calculation method	Minimum curvature	PD 564 (26') (RT) to Facility Vertical Datum	5089.00ft
Horizontal Reference Pt	Slot	PD 564 (26') (RT) to Mean Sea Level	5089.00ft
Vertical Reference Pt	PD 564 (26') (RT)	PD 564 (26') (RT) to Mud Line at Slot (SLOT#18 PAPA JO 2-25 36N-17HZ(1402'FSL & 1399'FWL,SEC.08))	5089.00ft
MD Reference Pt	PD 564 (26') (RT)	Section Origin	N 0.00, E 0.00 ft
Field Vertical Reference	Mean Sea Level	Section Azimuth	178.66°

REFERENCE WELLPATH IDENTIFICATION			
Operator	KERR-MCGEE OIL & GAS ONSHORE LP (WA)	Slot	SLOT#18 PAPA JO 2-25 36N-17HZ(1402'FSL & 1399'FWL,SEC.08)
Area	COLORADO	Well	PAPA JO 2-25 36N-17HZ
Field	WELD COUNTY (UTM/TRUE NORTH)	Wellbore	PAPA JO 2-25 36N-17HZ AWB
Facility	SEC.08-T1N-R68W		

WELLPATH DATA (191 stations) † = interpolated/extrapolated station												
MD [ft]	Inclination [°]	Azimuth [°]	TVD [ft]	Vert Sect [ft]	North [ft]	East [ft]	Grid East [US ft]	Grid North [US ft]	Latitude	Longitude	DLS [°/100ft]	Comments
0.00†	0.000	60.750	0.00	0.00	0.00	0.00	1631368.88	14549336.73	40°03'43.445°N	105°01'56.413°W	0.00	
26.00	0.000	60.750	26.00	0.00	0.00	0.00	1631368.88	14549336.73	40°03'43.445°N	105°01'56.413°W	0.00	
135.00	0.310	60.750	135.00	-0.14	0.14	0.26	1631369.14	14549336.87	40°03'43.446°N	105°01'56.410°W	0.28	FIRST SURFACE MWD+IFR1 SURVEY
167.00	0.530	98.280	167.00	-0.15	0.17	0.48	1631369.36	14549336.89	40°03'43.447°N	105°01'56.407°W	1.07	
198.00	0.620	104.080	198.00	-0.09	0.10	0.78	1631369.66	14549336.83	40°03'43.446°N	105°01'56.403°W	0.35	
230.00	1.100	106.280	229.99	0.05	-0.02	1.25	1631370.13	14549336.70	40°03'43.445°N	105°01'56.397°W	1.50	
261.00	1.450	113.840	260.99	0.31	-0.27	1.89	1631370.77	14549336.46	40°03'43.442°N	105°01'56.389°W	1.25	
293.00	1.580	117.000	292.97	0.69	-0.63	2.65	1631371.53	14549336.10	40°03'43.439°N	105°01'56.379°W	0.48	
324.00	1.930	128.160	323.96	1.23	-1.15	3.45	1631372.32	14549335.58	40°03'43.434°N	105°01'56.369°W	1.57	
356.00	3.210	129.040	355.93	2.15	-2.04	4.57	1631373.44	14549334.68	40°03'43.425°N	105°01'56.354°W	4.00	
387.00	2.640	128.070	386.89	3.17	-3.03	5.80	1631374.68	14549333.69	40°03'43.415°N	105°01'56.338°W	1.85	
419.00	2.770	126.230	418.85	4.11	-3.94	7.01	1631375.88	14549332.78	40°03'43.406°N	105°01'56.323°W	0.49	
451.00	3.120	132.560	450.81	5.18	-4.99	8.27	1631377.14	14549331.74	40°03'43.396°N	105°01'56.307°W	1.49	
482.00	3.740	129.830	481.75	6.43	-6.21	9.67	1631378.54	14549330.52	40°03'43.384°N	105°01'56.289°W	2.07	
514.00	4.130	137.220	513.68	7.98	-7.72	11.25	1631380.12	14549329.00	40°03'43.369°N	105°01'56.268°W	2.00	
545.00	5.360	136.510	544.57	9.89	-9.59	13.01	1631381.88	14549327.13	40°03'43.350°N	105°01'56.246°W	3.97	
577.00	5.980	139.940	576.41	12.30	-11.95	15.11	1631383.98	14549324.77	40°03'43.327°N	105°01'56.219°W	2.21	
609.00	6.420	139.850	608.23	15.00	-14.59	17.34	1631386.20	14549322.13	40°03'43.301°N	105°01'56.190°W	1.38	
641.00	6.810	138.360	640.01	17.84	-17.38	19.75	1631388.61	14549319.35	40°03'43.273°N	105°01'56.159°W	1.33	
673.00	7.340	137.040	671.77	20.81	-20.29	22.40	1631391.27	14549316.43	40°03'43.244°N	105°01'56.125°W	1.73	
704.00	8.440	135.720	702.48	23.96	-23.37	25.34	1631394.20	14549313.36	40°03'43.214°N	105°01'56.087°W	3.60	
736.00	9.400	138.970	734.09	27.69	-27.02	28.70	1631397.55	14549309.70	40°03'43.178°N	105°01'56.044°W	3.39	
768.00	10.150	140.380	765.62	31.91	-31.17	32.21	1631401.06	14549305.56	40°03'43.137°N	105°01'55.999°W	2.46	
800.00	10.550	140.910	797.10	36.44	-35.61	35.85	1631404.71	14549301.11	40°03'43.093°N	105°01'55.952°W	1.28	
832.00	10.850	142.230	828.55	41.18	-40.27	39.55	1631408.40	14549296.46	40°03'43.047°N	105°01'55.904°W	1.21	
863.00	11.340	142.400	858.97	45.99	-44.99	43.19	1631412.04	14549291.74	40°03'43.000°N	105°01'55.857°W	1.58	
895.00	11.290	141.790	890.35	51.03	-49.94	47.05	1631415.89	14549286.79	40°03'42.951°N	105°01'55.808°W	0.41	
927.00	11.470	144.070	921.72	56.15	-54.98	50.85	1631419.69	14549281.75	40°03'42.902°N	105°01'55.759°W	1.51	
958.00	12.700	144.250	952.03	61.50	-60.24	54.65	1631423.49	14549276.49	40°03'42.850°N	105°01'55.710°W	3.97	
990.00	13.010	146.090	983.23	67.44	-66.09	58.72	1631427.55	14549270.65	40°03'42.792°N	105°01'55.658°W	1.60	
1022.00	13.750	147.060	1014.36	73.71	-72.27	62.80	1631431.62	14549264.47	40°03'42.731°N	105°01'55.605°W	2.42	
1054.00	14.940	147.240	1045.36	80.47	-78.93	67.10	1631435.92	14549257.81	40°03'42.665°N	105°01'55.550°W	3.72	
1085.00	15.560	145.740	1075.27	87.37	-85.72	71.60	1631440.42	14549251.01	40°03'42.598°N	105°01'55.492°W	2.37	
1117.00	15.910	145.570	1106.07	94.65	-92.89	76.50	1631445.31	14549243.85	40°03'42.527°N	105°01'55.429°W	1.10	
1149.00	16.170	145.390	1136.82	102.05	-100.17	81.51	1631450.32	14549236.56	40°03'42.455°N	105°01'55.365°W	0.83	
1180.00	16.610	145.040	1166.56	109.35	-107.36	86.50	1631455.30	14549229.38	40°03'42.384°N	105°01'55.301°W	1.45	
1212.00	17.360	144.770	1197.17	117.12	-115.01	91.87	1631460.67	14549221.73	40°03'42.308°N	105°01'55.231°W	2.36	
1244.00	18.060	144.510	1227.65	125.19	-122.95	97.51	1631466.30	14549213.80	40°03'42.230°N	105°01'55.159°W	2.20	
1276.00	18.330	144.250	1258.05	133.44	-131.07	103.33	1631472.12	14549205.67	40°03'42.150°N	105°01'55.084°W	0.88	
1308.00	18.760	143.900	1288.39	141.82	-139.31	109.30	1631478.08	14549197.43	40°03'42.068°N	105°01'55.007°W	1.39	
1339.00	18.850	143.980	1317.73	150.04	-147.39	115.18	1631483.96	14549189.36	40°03'41.988°N	105°01'54.932°W	0.30	
1371.00	19.160	143.460	1347.99	158.58	-155.79	121.35	1631490.12	14549180.96	40°03'41.905°N	105°01'54.852°W	1.10	
1403.00	19.380	143.190	1378.20	167.19	-164.26	127.65	1631496.42	14549172.49	40°03'41.822°N	105°01'54.771°W	0.74	
1435.00	19.510	143.190	1408.37	175.87	-172.79	134.04	1631502.80	14549163.96	40°03'41.737°N	105°01'54.689°W	0.41	
1466.00	19.820	141.960	1437.56	184.30	-181.07	140.38	1631509.13	14549155.68	40°03'41.656°N	105°01'54.608°W	1.67	

REFERENCE WELLPATH IDENTIFICATION			
Operator	KERR-MCGEE OIL & GAS ONSHORE LP (WA)	Slot	SLOT#18 PAPA JO 2-25 36N-17HZ(1402'FSL & 1399'FWL,SEC.08)
Area	COLORADO	Well	PAPA JO 2-25 36N-17HZ
Field	WELD COUNTY (UTM/TRUE NORTH)	Wellbore	PAPA JO 2-25 36N-17HZ AWB
Facility	SEC.08-T1N-R68W		

WELLPATH DATA (191 stations) † = interpolated/extrapolated station												
MD (ft)	Inclination [°]	Azimuth [°]	TVD (ft)	Vert Sect (ft)	North (ft)	East (ft)	Grid East [US ft]	Grid North [US ft]	Latitude	Longitude	DLS [°/100ft]	Comments
1498.00	19.910	141.870	1467.66	193.01	-189.63	147.08	1631515.83	14549147.12	40°03'41.571"N	105°01'54.521"W	0.30	
1529.00	19.600	141.260	1496.84	201.37	-197.84	153.60	1631522.34	14549138.91	40°03'41.490"N	105°01'54.438"W	1.20	
1561.00	19.470	141.350	1526.99	209.87	-206.19	160.29	1631529.03	14549130.56	40°03'41.407"N	105°01'54.352"W	0.42	
1593.00	19.160	142.050	1557.19	218.33	-214.49	166.85	1631535.58	14549122.26	40°03'41.325"N	105°01'54.267"W	1.21	
1625.00	19.250	141.610	1587.41	226.76	-222.77	173.35	1631542.08	14549113.98	40°03'41.244"N	105°01'54.183"W	0.53	
1656.00	19.250	141.520	1616.68	234.91	-230.77	179.70	1631548.43	14549105.98	40°03'41.164"N	105°01'54.102"W	0.10	
1688.00	18.720	140.820	1646.94	243.17	-238.89	186.23	1631554.95	14549097.87	40°03'41.084"N	105°01'54.018"W	1.80	
1720.00	18.410	139.320	1677.27	251.13	-246.70	192.77	1631561.48	14549090.06	40°03'41.007"N	105°01'53.934"W	1.78	
1752.00	18.110	139.320	1707.66	258.89	-254.30	199.31	1631568.01	14549082.46	40°03'40.932"N	105°01'53.850"W	0.94	
1783.00	17.890	138.530	1737.14	266.25	-261.52	205.60	1631574.30	14549075.23	40°03'40.861"N	105°01'53.769"W	1.06	
1815.00	18.020	139.760	1767.59	273.86	-268.98	212.05	1631580.75	14549067.77	40°03'40.787"N	105°01'53.686"W	1.25	
1845.00	18.280	140.640	1796.09	281.18	-276.16	218.03	1631586.72	14549060.59	40°03'40.716"N	105°01'53.609"W	1.26	LAST SURFACE MWD+IFR1 SURVEY
1933.00	17.890	142.850	1879.75	303.01	-297.61	234.95	1631603.62	14549039.15	40°03'40.504"N	105°01'53.391"W	0.90	FIRST BHGE MWD+IFR1+SC SURVEY
2023.00	18.190	141.900	1965.32	325.48	-319.68	251.96	1631620.63	14549017.08	40°03'40.286"N	105°01'53.172"W	0.47	
2112.00	18.420	140.500	2049.82	347.66	-341.46	269.48	1631638.13	14548995.30	40°03'40.071"N	105°01'52.947"W	0.56	
2201.00	18.390	136.640	2134.27	369.15	-362.52	288.06	1631656.70	14548974.25	40°03'39.862"N	105°01'52.708"W	1.37	
2291.00	18.550	139.690	2219.64	390.83	-383.76	307.07	1631675.69	14548953.01	40°03'39.653"N	105°01'52.464"W	1.09	
2381.00	19.220	135.600	2304.79	412.78	-405.26	326.70	1631695.30	14548931.51	40°03'39.440"N	105°01'52.211"W	1.65	
2470.00	19.000	133.090	2388.89	433.62	-425.63	347.53	1631716.11	14548911.15	40°03'39.239"N	105°01'51.943"W	0.96	
2560.00	18.510	131.890	2474.11	453.67	-445.17	368.86	1631737.43	14548891.60	40°03'39.046"N	105°01'51.669"W	0.69	
2649.00	17.870	130.940	2558.66	472.53	-463.55	389.70	1631758.25	14548873.22	40°03'38.864"N	105°01'51.401"W	0.79	
2739.00	17.130	131.260	2644.50	490.79	-481.34	410.09	1631778.63	14548855.43	40°03'38.688"N	105°01'51.139"W	0.83	
2829.00	16.230	131.160	2730.71	508.26	-498.36	429.52	1631798.05	14548838.41	40°03'38.520"N	105°01'50.889"W	1.00	
2863.00†	16.352	131.558	2763.35	514.72	-504.67	436.68	1631805.20	14548832.11	40°03'38.458"N	105°01'50.797"W	0.49	ENTER LANDBOX (897'FSL & 1834'FWL,SEC.08) 40.0606827 -105.0307769
2918.00	16.550	132.190	2816.09	525.39	-515.06	448.28	1631816.79	14548821.71	40°03'38.355"N	105°01'50.648"W	0.49	
3008.00	15.600	132.490	2902.57	542.60	-531.85	466.70	1631835.20	14548804.93	40°03'38.189"N	105°01'50.411"W	1.06	
3097.00	14.770	132.070	2988.47	558.68	-547.53	483.95	1631852.43	14548789.24	40°03'38.034"N	105°01'50.189"W	0.94	
3187.00	13.670	132.370	3075.71	573.91	-562.38	500.32	1631868.79	14548774.39	40°03'37.887"N	105°01'49.978"W	1.22	
3276.00	12.820	132.920	3162.34	588.07	-576.20	515.32	1631883.78	14548760.58	40°03'37.751"N	105°01'49.785"W	0.97	
3366.00	11.880	132.970	3250.25	601.51	-589.31	529.41	1631897.87	14548747.46	40°03'37.621"N	105°01'49.604"W	1.04	
3455.00	10.930	134.660	3337.50	613.98	-601.49	542.12	1631910.56	14548735.29	40°03'37.501"N	105°01'49.441"W	1.13	
3545.00	9.460	136.710	3426.07	625.62	-612.87	553.26	1631921.69	14548723.90	40°03'37.388"N	105°01'49.298"W	1.68	
3635.00	8.360	137.570	3514.99	636.05	-623.08	562.74	1631931.17	14548713.69	40°03'37.288"N	105°01'49.176"W	1.23	
3724.00	7.450	138.450	3603.14	645.33	-632.17	570.94	1631939.36	14548704.60	40°03'37.198"N	105°01'49.070"W	1.03	
3814.00	6.830	127.640	3692.45	653.16	-639.81	579.05	1631947.46	14548696.96	40°03'37.122"N	105°01'48.966"W	1.64	
3903.00	5.850	125.280	3780.90	659.19	-645.66	586.94	1631955.35	14548691.11	40°03'37.064"N	105°01'48.864"W	1.14	
3993.00	4.960	124.650	3870.50	664.21	-650.52	593.88	1631962.29	14548686.25	40°03'37.016"N	105°01'48.775"W	0.99	
4082.00	4.610	133.740	3959.19	669.01	-655.18	599.63	1631968.03	14548681.59	40°03'36.970"N	105°01'48.701"W	0.94	
4172.00	4.060	139.410	4048.93	674.03	-660.10	604.32	1631972.72	14548676.67	40°03'36.922"N	105°01'48.641"W	0.77	
4262.00	3.550	142.810	4138.73	678.76	-664.74	608.08	1631976.47	14548672.03	40°03'36.876"N	105°01'48.593"W	0.62	
4351.00	3.120	148.930	4227.58	683.10	-669.01	610.99	1631979.38	14548667.76	40°03'36.834"N	105°01'48.555"W	0.63	
4440.00	2.810	152.230	4316.46	687.15	-673.02	613.26	1631981.65	14548663.76	40°03'36.794"N	105°01'48.526"W	0.40	
4530.00	3.240	140.940	4406.34	691.14	-676.94	615.89	1631984.27	14548659.83	40°03'36.755"N	105°01'48.492"W	0.81	
4619.00	3.600	119.030	4495.18	694.54	-680.25	619.92	1631988.30	14548656.52	40°03'36.723"N	105°01'48.440"W	1.51	
4709.00	3.460	112.900	4585.01	697.09	-682.68	624.89	1631993.27	14548654.09	40°03'36.699"N	105°01'48.376"W	0.45	

REFERENCE WELLPATH IDENTIFICATION

Operator	KERR-MCGEE OIL & GAS ONSHORE LP (WA)	Slot	SLOT#18 PAPA JO 2-25 36N-17HZ(1402'FSL & 1399'FWL,SEC.08)
Area	COLORADO	Well	PAPA JO 2-25 36N-17HZ
Field	WELD COUNTY (UTM/TRUE NORTH)	Wellbore	PAPA JO 2-25 36N-17HZ AWB
Facility	SEC.08-T1N-R68W		

WELLPATH DATA (191 stations) † = interpolated/extrapolated station

MD [ft]	Inclination [°]	Azimuth [°]	TVD [ft]	Vert Sect [ft]	North [ft]	East [ft]	Grid East [US ft]	Grid North [US ft]	Latitude	Longitude	DLS [°/100ft]	Comments
4824.00	2.960	114.800	4699.83	699.82	-685.28	630.78	1631999.16	14548651.50	40°03'36.673"N	105°01'48.301"W	0.44	
4913.00	2.790	119.040	4788.72	701.93	-687.29	634.76	1632003.14	14548649.48	40°03'36.653"N	105°01'48.249"W	0.31	
5002.00	2.590	119.630	4877.62	704.06	-689.34	638.40	1632006.78	14548647.43	40°03'36.633"N	105°01'48.203"W	0.23	
5092.00	1.990	118.830	4967.55	705.89	-691.10	641.54	1632009.91	14548645.68	40°03'36.615"N	105°01'48.162"W	0.67	
5181.00	1.540	119.190	5056.51	707.27	-692.42	643.94	1632012.31	14548644.35	40°03'36.602"N	105°01'48.131"W	0.51	
5270.00	0.950	99.720	5145.49	708.02	-693.13	645.71	1632014.08	14548643.64	40°03'36.595"N	105°01'48.109"W	0.81	
5360.00	0.460	96.570	5235.48	708.21	-693.30	646.80	1632015.17	14548643.47	40°03'36.594"N	105°01'48.095"W	0.55	
5449.00	0.460	188.970	5324.48	708.61	-693.69	647.10	1632015.47	14548643.08	40°03'36.590"N	105°01'48.091"W	0.75	
5539.00	0.720	212.840	5414.47	709.44	-694.53	646.74	1632015.11	14548642.25	40°03'36.581"N	105°01'48.095"W	0.39	
5629.00	0.660	244.730	5504.47	710.12	-695.22	645.96	1632014.33	14548641.55	40°03'36.575"N	105°01'48.105"W	0.43	
5718.00	0.820	250.970	5593.46	710.52	-695.65	644.90	1632013.27	14548641.12	40°03'36.570"N	105°01'48.119"W	0.20	
5807.00	0.790	257.250	5682.45	710.83	-695.99	643.70	1632012.07	14548640.78	40°03'36.567"N	105°01'48.134"W	0.10	
5897.00	0.750	259.760	5772.44	711.05	-696.23	642.51	1632010.88	14548640.54	40°03'36.565"N	105°01'48.150"W	0.06	
5987.00	0.560	273.650	5862.44	711.10	-696.31	641.49	1632009.86	14548640.46	40°03'36.564"N	105°01'48.163"W	0.27	
6076.00	0.760	274.610	5951.43	711.00	-696.23	640.47	1632008.84	14548640.54	40°03'36.565"N	105°01'48.176"W	0.23	
6166.00	0.560	263.830	6041.43	710.98	-696.23	639.44	1632007.81	14548640.54	40°03'36.565"N	105°01'48.189"W	0.26	
6255.00	0.570	276.680	6130.42	710.95	-696.23	638.57	1632006.94	14548640.55	40°03'36.565"N	105°01'48.200"W	0.14	
6345.00	0.640	255.060	6220.42	711.01	-696.31	637.64	1632006.01	14548640.47	40°03'36.564"N	105°01'48.212"W	0.26	
6434.00	0.690	268.110	6309.41	711.13	-696.45	636.62	1632004.99	14548640.32	40°03'36.562"N	105°01'48.225"W	0.18	
6524.00	0.390	257.640	6399.41	711.19	-696.54	635.78	1632004.15	14548640.24	40°03'36.562"N	105°01'48.236"W	0.35	
6613.00	0.380	194.160	6488.40	711.53	-696.89	635.41	1632003.78	14548639.89	40°03'36.558"N	105°01'48.241"W	0.46	
6703.00	0.460	170.650	6578.40	712.18	-697.53	635.40	1632003.77	14548639.24	40°03'36.552"N	105°01'48.241"W	0.21	
6792.00	0.740	164.020	6667.40	713.09	-698.44	635.61	1632003.98	14548638.34	40°03'36.543"N	105°01'48.238"W	0.32	
6882.00	0.970	164.680	6757.39	714.39	-699.73	635.98	1632004.35	14548637.05	40°03'36.530"N	105°01'48.234"W	0.26	
6971.00	1.410	159.460	6846.37	716.16	-701.48	636.56	1632004.93	14548635.29	40°03'36.513"N	105°01'48.226"W	0.51	
7061.00	1.470	170.390	6936.34	718.34	-703.66	637.14	1632005.51	14548633.12	40°03'36.491"N	105°01'48.219"W	0.31	
7072.00†	1.752	174.691	6947.34	718.65	-703.96	637.18	1632005.55	14548632.81	40°03'36.488"N	105°01'48.218"W	2.79	KOP
7150.00	3.860	186.380	7025.24	722.44	-707.76	637.00	1632005.36	14548629.02	40°03'36.451"N	105°01'48.221"W	2.79	
7240.00	9.280	179.960	7114.61	732.71	-718.04	636.67	1632005.03	14548618.75	40°03'36.349"N	105°01'48.225"W	6.07	
7330.00	15.390	179.420	7202.50	751.92	-737.25	636.79	1632005.15	14548599.54	40°03'36.159"N	105°01'48.223"W	6.79	
7419.00	21.730	179.110	7286.82	780.23	-765.56	637.17	1632005.51	14548571.24	40°03'35.879"N	105°01'48.218"W	7.12	
7509.00	29.000	178.320	7368.09	818.76	-804.08	638.07	1632006.40	14548532.74	40°03'35.499"N	105°01'48.207"W	8.09	
7598.00	37.910	179.660	7442.27	867.77	-853.09	638.86	1632007.18	14548483.75	40°03'35.015"N	105°01'48.197"W	10.05	
7687.00	48.060	177.640	7507.30	928.37	-913.66	640.39	1632008.68	14548423.20	40°03'34.416"N	105°01'48.177"W	11.51	
7777.00	52.080	176.370	7565.05	997.34	-982.57	644.02	1632012.28	14548354.32	40°03'33.735"N	105°01'48.130"W	4.60	
7867.00	57.730	176.850	7616.78	1070.90	-1056.05	648.36	1632016.60	14548280.87	40°03'33.009"N	105°01'48.075"W	6.29	
7956.00	65.280	177.770	7659.21	1149.04	-1134.12	652.01	1632020.21	14548202.82	40°03'32.237"N	105°01'48.028"W	8.53	
8046.00	73.200	178.910	7691.08	1233.12	-1218.17	654.42	1632022.60	14548118.80	40°03'31.407"N	105°01'47.997"W	8.88	
8136.00	79.620	178.260	7712.22	1320.56	-1305.58	656.59	1632024.73	14548031.43	40°03'30.543"N	105°01'47.969"W	7.17	
8225.00	86.860	178.430	7722.69	1408.88	-1393.87	659.14	1632027.25	14547943.18	40°03'29.670"N	105°01'47.936"W	8.14	LANDING (8'FSL & 2058'FWL,SEC.08) 40.0582418 -105.0299823
8315.00	89.040	178.260	7725.91	1498.81	-1483.77	661.74	1632029.81	14547853.32	40°03'28.782"N	105°01'47.903"W	2.43	
8404.00	90.860	179.380	7725.99	1587.81	-1572.74	663.57	1632031.61	14547764.38	40°03'27.903"N	105°01'47.879"W	2.40	
8494.00	90.740	176.100	7724.73	1677.78	-1662.65	667.12	1632035.12	14547674.50	40°03'27.014"N	105°01'47.834"W	3.65	
8584.00	90.950	173.870	7723.40	1767.57	-1752.29	674.98	1632042.95	14547584.89	40°03'26.128"N	105°01'47.732"W	2.49	
8673.00	89.290	173.460	7723.22	1856.23	-1840.74	684.80	1632052.74	14547496.47	40°03'25.254"N	105°01'47.606"W	1.92	

REFERENCE WELLPATH IDENTIFICATION

Operator	KERR-MCGEE OIL & GAS ONSHORE LP (WA)	Slot	SLOT#18 PAPA JO 2-25 36N-17HZ(1402'FSL & 1399'FWL,SEC.08)
Area	COLORADO	Well	PAPA JO 2-25 36N-17HZ
Field	WELD COUNTY (UTM/TRUE NORTH)	Wellbore	PAPA JO 2-25 36N-17HZ AWB
Facility	SEC.08-T1N-R68W		

WELLPATH DATA (191 stations) † = interpolated/extrapolated station

MD (ft)	Inclination [°]	Azimuth [°]	TVD (ft)	Vert Sect (ft)	North (ft)	East (ft)	Grid East (US ft)	Grid North (US ft)	Latitude	Longitude	DLS "/100ft	Comments
8687.00†	89.392	174.143	7723.38	1870.18	-1854.66	686.31	1632054.24	14547482.56	40°03'25.117"N	105°01'47.587"W	4.93	CROSS SETBACK HEEL (453'FNL & 2085'FWL,SEC.17) 40.0569769 -105.0298852
8762.00	89.940	177.800	7723.81	1945.08	-1929.46	691.58	1632059.48	14547407.79	40°03'24.378"N	105°01'47.519"W	4.93	
8852.00	89.600	179.220	7724.18	2035.08	-2019.43	693.92	1632061.79	14547317.86	40°03'23.488"N	105°01'47.489"W	1.62	
8942.00	91.510	179.490	7723.30	2125.07	-2109.41	694.94	1632062.77	14547227.91	40°03'22.599"N	105°01'47.476"W	2.14	
9031.00	91.970	179.470	7720.60	2214.02	-2198.37	695.74	1632063.54	14547138.99	40°03'21.720"N	105°01'47.466"W	0.52	
9121.00	93.920	179.080	7715.98	2303.89	-2288.24	696.88	1632064.65	14547049.15	40°03'20.832"N	105°01'47.451"W	2.21	
9210.00	93.950	178.160	7709.87	2392.68	-2377.00	699.02	1632066.75	14546960.43	40°03'19.955"N	105°01'47.424"W	1.03	
9299.00	91.350	177.720	7705.76	2481.57	-2465.84	702.21	1632069.92	14546871.62	40°03'19.077"N	105°01'47.383"W	2.96	
9389.00	90.250	177.370	7704.50	2571.54	-2555.75	706.07	1632073.74	14546781.75	40°03'18.188"N	105°01'47.333"W	1.28	
9479.00	92.060	176.830	7702.68	2661.48	-2645.61	710.62	1632078.25	14546691.92	40°03'17.300"N	105°01'47.274"W	2.10	
9568.00	90.120	177.400	7700.99	2750.43	-2734.48	715.10	1632082.70	14546603.09	40°03'16.422"N	105°01'47.217"W	2.27	
9658.00	88.580	179.670	7702.01	2840.42	-2824.43	717.40	1632084.97	14546513.17	40°03'15.533"N	105°01'47.187"W	3.05	
9747.00	89.720	179.600	7703.33	2929.39	-2913.42	717.97	1632085.50	14546424.22	40°03'14.654"N	105°01'47.180"W	1.28	
9837.00	90.280	176.070	7703.33	3019.37	-3003.34	721.37	1632088.87	14546334.33	40°03'13.765"N	105°01'47.136"W	3.97	
9926.00	89.170	177.850	7703.76	3108.32	-3092.21	726.09	1632093.55	14546245.50	40°03'12.887"N	105°01'47.076"W	2.36	
10016.00	90.150	181.040	7704.29	3198.30	-3182.19	726.96	1632094.39	14546155.55	40°03'11.998"N	105°01'47.065"W	3.71	
10105.00	92.250	181.790	7702.43	3287.17	-3271.14	724.76	1632092.16	14546066.64	40°03'11.119"N	105°01'47.093"W	2.51	
10195.00	91.290	181.370	7699.65	3377.01	-3361.06	722.28	1632089.65	14545976.75	40°03'10.230"N	105°01'47.125"W	1.16	
10285.00	89.820	181.280	7698.78	3466.91	-3451.03	720.20	1632087.54	14545886.82	40°03'09.341"N	105°01'47.152"W	1.64	
10374.00	90.990	180.940	7698.15	3555.82	-3540.01	718.48	1632085.78	14545797.88	40°03'08.462"N	105°01'47.174"W	1.37	
10464.00	93.240	180.960	7694.83	3645.68	-3629.93	716.98	1632084.26	14545707.99	40°03'07.573"N	105°01'47.193"W	2.50	
10554.00	91.510	179.120	7691.10	3735.57	-3719.85	716.92	1632084.16	14545618.12	40°03'06.685"N	105°01'47.194"W	2.80	
10643.00	90.000	179.220	7689.93	3824.56	-3808.83	718.21	1632085.42	14545529.17	40°03'05.805"N	105°01'47.177"W	1.70	
10733.00	89.170	179.860	7690.58	3914.54	-3898.82	718.93	1632086.11	14545439.21	40°03'04.916"N	105°01'47.168"W	1.16	
10822.00	89.040	180.470	7691.97	4003.50	-3987.81	718.68	1632085.82	14545350.26	40°03'04.036"N	105°01'47.171"W	0.70	
10912.00	91.790	180.080	7691.32	4093.46	-4077.80	718.25	1632085.36	14545260.31	40°03'03.147"N	105°01'47.177"W	3.09	
11001.00	91.940	179.550	7688.42	4182.39	-4166.75	718.53	1632085.61	14545171.39	40°03'02.268"N	105°01'47.173"W	0.62	
11091.00	89.970	179.290	7686.92	4272.37	-4256.73	719.44	1632086.49	14545081.45	40°03'01.379"N	105°01'47.162"W	2.21	
11180.00	88.580	178.790	7688.05	4361.35	-4345.70	720.94	1632087.95	14544992.51	40°03'00.500"N	105°01'47.142"W	1.66	
11270.00	89.880	178.040	7689.26	4451.34	-4435.66	723.42	1632090.40	14544902.59	40°02'59.611"N	105°01'47.110"W	1.67	
11359.00	88.520	177.280	7690.50	4540.32	-4524.57	727.06	1632094.00	14544813.71	40°02'58.732"N	105°01'47.064"W	1.75	
11449.00	86.950	174.840	7694.06	4630.14	-4614.28	733.24	1632100.14	14544724.03	40°02'57.846"N	105°01'46.984"W	3.22	
11539.00	90.400	177.410	7696.14	4720.01	-4704.03	739.31	1632106.19	14544634.32	40°02'56.959"N	105°01'46.906"W	4.78	
11628.00	91.200	176.610	7694.89	4808.96	-4792.90	743.95	1632110.79	14544545.48	40°02'56.080"N	105°01'46.847"W	1.27	
11718.00	91.910	177.530	7692.45	4898.89	-4882.75	748.55	1632115.36	14544455.67	40°02'55.192"N	105°01'46.788"W	1.29	
11807.00	91.200	177.790	7690.04	4987.85	-4971.64	752.19	1632118.96	14544366.81	40°02'54.314"N	105°01'46.741"W	0.85	
11897.00	89.010	178.730	7689.87	5077.84	-5061.59	754.92	1632121.66	14544276.90	40°02'53.425"N	105°01'46.706"W	2.65	
11987.00	89.970	179.030	7690.67	5167.83	-5151.57	756.68	1632123.38	14544186.95	40°02'52.536"N	105°01'46.683"W	1.12	
12076.00	91.570	179.650	7689.48	5256.82	-5240.55	757.70	1632124.37	14544098.01	40°02'51.657"N	105°01'46.670"W	1.93	
12166.00	89.690	179.640	7688.49	5346.79	-5330.54	758.26	1632124.90	14544008.05	40°02'50.767"N	105°01'46.663"W	2.09	
12256.00	90.800	179.200	7688.10	5436.78	-5420.53	759.17	1632125.78	14543918.10	40°02'49.878"N	105°01'46.651"W	1.33	
12345.00	92.340	179.040	7685.66	5525.74	-5509.49	760.54	1632127.11	14543829.18	40°02'48.999"N	105°01'46.634"W	1.74	
12435.00	89.630	178.490	7684.12	5615.72	-5599.44	762.48	1632129.02	14543739.26	40°02'48.110"N	105°01'46.609"W	3.07	
12525.00	90.250	178.850	7684.21	5705.72	-5689.42	764.57	1632131.07	14543649.32	40°02'47.221"N	105°01'46.582"W	0.80	
12614.00	92.220	179.410	7682.29	5794.69	-5778.38	765.92	1632132.39	14543560.39	40°02'46.342"N	105°01'46.565"W	2.30	

REFERENCE WELLPATH IDENTIFICATION			
Operator	KERR-MCGEE OIL & GAS ONSHORE LP (WA)	Slot	SLOT#18 PAPA JO 2-25 36N-17HZ(1402'FSL & 1399'FWL,SEC.08)
Area	COLORADO	Well	PAPA JO 2-25 36N-17HZ
Field	WELD COUNTY (UTM/TRUE NORTH)	Wellbore	PAPA JO 2-25 36N-17HZ AWB
Facility	SEC.08-T1N-R68W		

WELLPATH DATA (191 stations) † = interpolated/extrapolated station												
MD [ft]	Inclination [°]	Azimuth [°]	TVD [ft]	Vert Sect [ft]	North [ft]	East [ft]	Grid East [US ft]	Grid North [US ft]	Latitude	Longitude	DLS ["/100ft]	Comments
12704.00	89.820	179.450	7680.69	5884.66	-5868.36	766.81	1632133.25	14543470.45	40°02'45.452"N	105°01'46.553"W	2.67	
12793.00	90.180	179.090	7680.69	5973.66	-5957.35	767.95	1632134.35	14543381.49	40°02'44.573"N	105°01'46.539"W	0.57	
12883.00	92.000	178.880	7678.98	6063.64	-6047.32	769.54	1632135.91	14543291.56	40°02'43.684"N	105°01'46.518"W	2.04	
12972.00	90.180	178.810	7677.29	6152.62	-6136.28	771.33	1632137.67	14543202.63	40°02'42.805"N	105°01'46.495"W	2.05	
13043.00†	90.898	178.603	7676.62	6223.61	-6207.26	772.94	1632139.25	14543131.68	40°02'42.103"N	105°01'46.475"W	1.05	CROSS SETBACK TOE (459'FSL & 2111'FWL,SEC.17) 40.0450287 -105.0295763
13061.00	91.080	178.550	7676.31	6241.61	-6225.25	773.38	1632139.69	14543113.70	40°02'41.926"N	105°01'46.469"W	1.05	
13151.00	88.580	179.290	7676.57	6331.60	-6315.22	775.08	1632141.35	14543023.76	40°02'41.036"N	105°01'46.447"W	2.90	
13240.00	89.290	179.110	7678.23	6420.58	-6404.20	776.32	1632142.56	14542934.82	40°02'40.157"N	105°01'46.431"W	0.82	
13330.00	91.110	178.620	7677.91	6510.58	-6494.18	778.10	1632144.31	14542844.88	40°02'39.268"N	105°01'46.408"W	2.09	
13403.00	92.800	179.050	7675.42	6583.53	-6567.12	779.59	1632145.77	14542771.97	40°02'38.547"N	105°01'46.389"W	2.39	LAST BHGE MWD+IFR1+SC SURVEY
13450.00	92.800	179.050	7673.13	6630.47	-6614.05	780.37	1632146.53	14542725.05	40°02'38.083"N	105°01'46.379"W	0.00	PTB (52'FSL & 2119'FWL,SEC.17) 40.0439120 -105.0295498

TARGETS								
Name	TVD [ft]	North [ft]	East [ft]	Grid East [US ft]	Grid North [US ft]	Latitude	Longitude	Shape
SEC.08-T1N-R68W	-2.00	1.11	-195.08	1631173.88	14549337.91	40°03'43.456"N	105°01'58.922"W	polygon
SEC.17-T1N-R68W	-2.00	1.11	-195.08	1631173.88	14549337.91	40°03'43.456"N	105°01'58.922"W	polygon
PAPA JO 2-25 36N-17HZ BHL REV-1(50'FSL & 2124'FWL,SEC.17)	7687.00	-6616.25	785.34	1632151.50	14542722.85	40°02'38.062"N	105°01'46.315"W	point
PAPA JO 2-25 36N-17HZ INT. TARGET@5250'VS	7687.00	-5233.84	753.04	1632119.72	14544104.72	40°02'51.723"N	105°01'46.730"W	point
PAPA JO 2-25 36N-17HZ HEEL REV-1(50'FNL & 1996'FWL,SEC.17)	7724.00	-1444.42	664.53	1632032.62	14547892.64	40°03'29.171"N	105°01'47.867"W	point
PAPA JO 2-25 36N-17HZ LANDBOX	7724.00	0.00	0.00	1631368.88	14549336.73	40°03'43.445"N	105°01'56.413"W	polygon
PAPA JO 2-25 36N-17HZ SETBACK 1	7724.00	0.00	0.00	1631368.88	14549336.73	40°03'43.445"N	105°01'56.413"W	polygon
PAPA JO 2-25 36N-17HZ SETBACK 2	7724.00	0.00	0.00	1631368.88	14549336.73	40°03'43.445"N	105°01'56.413"W	polygon

WELLPATH COMPOSITION - Ref Wellbore: PAPA JO 2-25 36N-17HZ AWB				Ref Wellpath: PAPA JO 2-25 36N-17HZ AWP		
Start MD [ft]	End MD [ft]	Positional Uncertainty Model		Log Name/Comment		Wellbore
26.00	1845.00	Custom APC ISCWSA REV 2 MWD+IFR1 (approximation)		Custom APC ISCWSA Rev-2 MWD+IFR1 <135 - 1845>		PAPA JO 2-25 36N-17HZ AWB
1845.00	13403.00	Custom APC ISCWSA REV 2 MWD+IFR1+SC (approximation)		BHGE Custom APC ISCWSA Rev-2 MWD+IFR1+SC <1933 - 13403>		PAPA JO 2-25 36N-17HZ AWB
13403.00	13450.00	Blind Drilling (std)		Projection to bit		PAPA JO 2-25 36N-17HZ AWB

REFERENCE WELLPATH IDENTIFICATION			
Operator	KERR-MCGEE OIL & GAS ONSHORE LP (WA)	Slot	SLOT#18 PAPA JO 2-25 36N-17HZ(1402'FSL & 1399'FWL,SEC.08)
Area	COLORADO	Well	PAPA JO 2-25 36N-17HZ
Field	WELD COUNTY (UTM/TRUE NORTH)	Wellbore	PAPA JO 2-25 36N-17HZ AWB
Facility	SEC.08-T1N-R68W		

WELLPATH COMMENTS				
MD [ft]	Inclination [°]	Azimuth [°]	TVD [ft]	Comment
135.00	0.310	60.750	135.00	FIRST SURFACE MWD+IFR1 SURVEY
1845.00	18.280	140.640	1796.09	LAST SURFACE MWD+IFR1 SURVEY
1933.00	17.890	142.850	1879.75	FIRST BHGE MWD+IFR1+SC SURVEY
2863.00	16.352	131.558	2763.35	ENTER LANDBOX (897'FSL & 1834'FWL,SEC.08) 40.0606827 -105.0307769
7072.00	1.752	174.691	6947.34	KOP
8225.00	86.860	178.430	7722.69	LANDING (8'FSL & 2058'FWL,SEC.08) 40.0582418 -105.0299823
8687.00	89.392	174.143	7723.38	CROSS SETBACK HEEL (453'FNL & 2085'FWL,SEC.17) 40.0569769 -105.0298852
13043.00	90.898	178.603	7676.62	CROSS SETBACK TOE (459'FSL & 2111'FWL,SEC.17) 40.0450287 -105.0295763
13403.00	92.800	179.050	7675.42	LAST BHGE MWD+IFR1+SC SURVEY
13450.00	92.800	179.050	7673.13	PTB (52'FSL & 2119'FWL,SEC.17) 40.0439120 -105.0295498