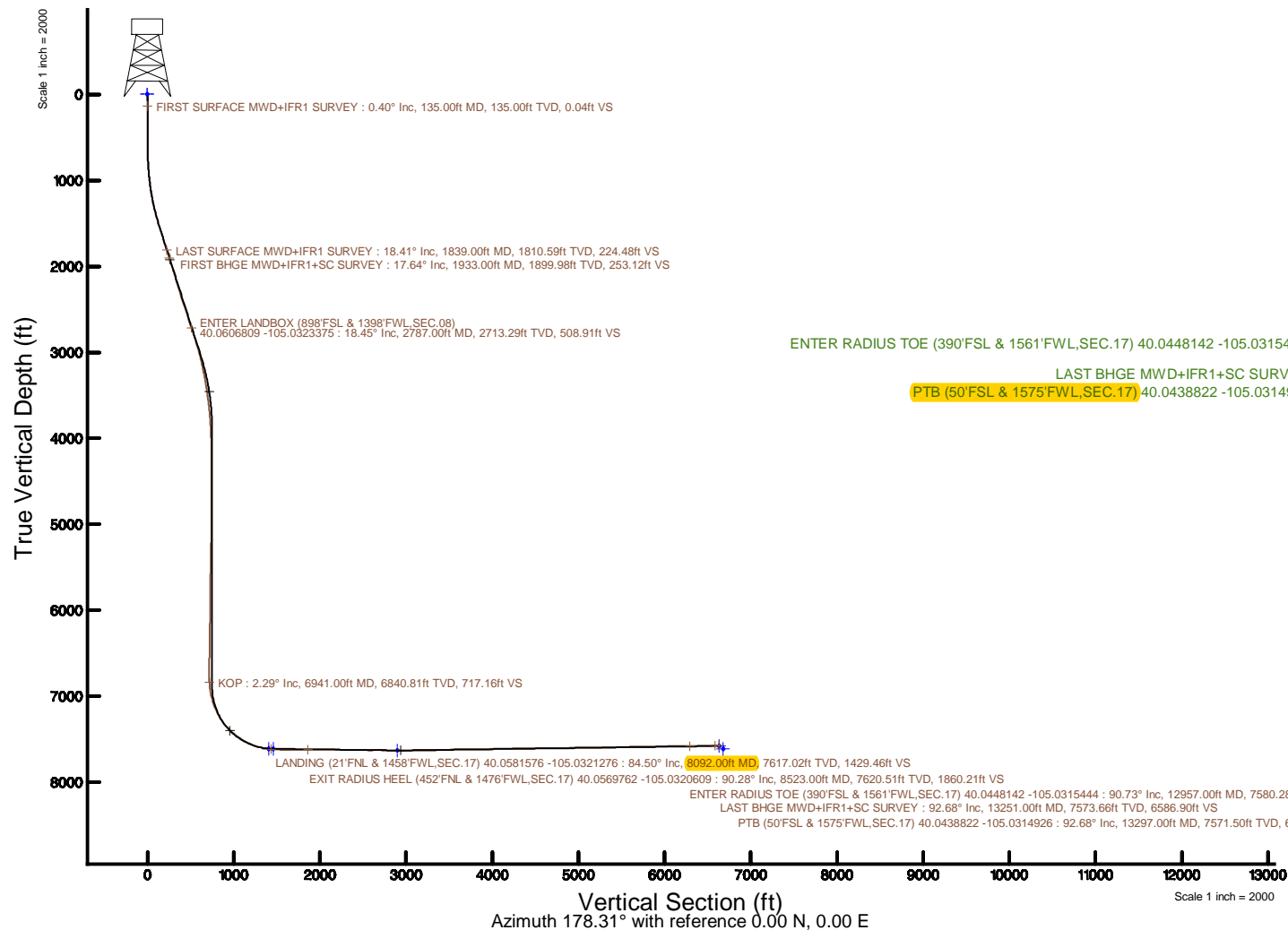


Location:	COLORADO	Spot:	SLOT#13 PAPA JO 2-25 35N2-17HZ/1404FSL & 1294FWL-SEC.08)
Field:	WELD COUNTY (UTM/TRUE NORTH)	Well:	PAPA JO 2-25 35N2-17HZ
Facility:	SEC.08-TIN-R6WR	Wellbore:	PAPA JO 2-25 35N2-17HZ PWB
Plot reference wellpath is PAPA JO 2-25 35N2-17HZ PPWP RevA.0		Grid System: NAD83 / UTM Zone 13 North, US feet	
True vertical depths are referenced to PD 564 (26) (RT)		* Wellpath was transformed from a different geoidic datum	
Measured depths are referenced to PD 564 (26) (RT)		North Reference: True north	
PD 564 (26) (RT) to Mean Sea Level: 5089 feet		Scale: True distance	
Mean Sea Level to Mud line (At Slot: SLOT#13 PAPA JO 2-25 35N2-17HZ/1404FSL & 1294FWL-SEC.08): 0 feet		Depths are in feet	
Coordinates are in feet referenced to Slot		Created by: psainser on 2018-01-26	
		Database: WA_DEN_Anadarko_Dein	



REFERENCE WELLPATH IDENTIFICATION			
Operator	KERR-MCGEE OIL & GAS ONSHORE LP (WA)	Slot	SLOT#13 PAPA JO 2-25 35N2-17HZ(1404'FSL & 1294'FWL,SEC.08)
Area	COLORADO	Well	PAPA JO 2-25 35N2-17HZ
Field	WELD COUNTY (UTM/TRUE NORTH)	Wellbore	PAPA JO 2-25 35N2-17HZ AWB
Facility	SEC.08-T1N-R68W		

REPORT SETUP INFORMATION			
Projection System	NAD83 / UTM Zone 13 North, US feet	Software System	WellArchitect® 5.0
North Reference	True	User	Painsetr
Scale	0.999600	Report Generated	1/26/2018 at 1:56 PM
Convergence at slot	0.03° West	Database/Source file	WA_DEN_Anadarko_Defn/PAPA_JO_2-25_35N2-17HZ_AWP.xml

WELLPATH LOCATION						
	Local coordinates		Grid coordinates		Geographic coordinates	
	North[ft]	East[ft]	Easting[US ft]	Northing[US ft]	Latitude	Longitude
Slot Location	-841.49	-943.84	1631263.96	14549337.47	40°03'43.452"N	105°01'57.763"W
Facility Reference Pt			1632207.69	14550178.32	40°03'51.768"N	105°01'45.624"W
Field Reference Pt			1698235.31	14552047.82	40°04'09.600"N	104°47'36.000"W

WELLPATH DATUM			
Calculation method	Minimum curvature	PD 564 (26') (RT) to Facility Vertical Datum	5089.00ft
Horizontal Reference Pt	Slot	PD 564 (26') (RT) to Mean Sea Level	5089.00ft
Vertical Reference Pt	PD 564 (26') (RT)	PD 564 (26') (RT) to Mud Line at Slot (SLOT#13 PAPA JO 2-25 35N2-17HZ(1404'FSL & 1294'FWL,SEC.08))	5089.00ft
MD Reference Pt	PD 564 (26') (RT)	Section Origin	N 0.00, E 0.00 ft
Field Vertical Reference	Mean Sea Level	Section Azimuth	178.31°

REFERENCE WELLPATH IDENTIFICATION			
Operator	KERR-MCGEE OIL & GAS ONSHORE LP (WA)	Slot	SLOT#13 PAPA JO 2-25 35N2-17HZ(1404'FSL & 1294'FWL,SEC.08)
Area	COLORADO	Well	PAPA JO 2-25 35N2-17HZ
Field	WELD COUNTY (UTM/TRUE NORTH)	Wellbore	PAPA JO 2-25 35N2-17HZ AWB
Facility	SEC.08-T1N-R68W		

WELLPATH DATA (188 stations) † = interpolated/extrapolated station												
MD [ft]	Inclination [°]	Azimuth [°]	TVD [ft]	Vert Sect [ft]	North [ft]	East [ft]	Grid East [US ft]	Grid North [US ft]	Latitude	Longitude	DLS [°/100ft]	Comments
0.00†	0.000	94.150	0.00	0.00	0.00	0.00	1631263.96	14549337.47	40°03'43.452"N	105°01'57.763"W	0.00	
26.00	0.000	94.150	26.00	0.00	0.00	0.00	1631263.96	14549337.47	40°03'43.452"N	105°01'57.763"W	0.00	
135.00	0.400	94.150	135.00	0.04	-0.03	0.38	1631264.33	14549337.45	40°03'43.452"N	105°01'57.758"W	0.37	FIRST SURFACE MWD+IFR1 SURVEY
167.00	0.620	90.900	167.00	0.06	-0.04	0.66	1631264.62	14549337.43	40°03'43.452"N	105°01'57.754"W	0.69	
198.00	0.260	270.020	198.00	0.06	-0.04	0.76	1631264.72	14549337.43	40°03'43.452"N	105°01'57.753"W	2.84	
230.00	0.480	264.130	230.00	0.07	-0.05	0.56	1631264.51	14549337.42	40°03'43.451"N	105°01'57.756"W	0.70	
261.00	0.660	256.570	261.00	0.12	-0.11	0.25	1631264.21	14549337.36	40°03'43.451"N	105°01'57.760"W	0.63	
293.00	1.010	274.680	292.99	0.12	-0.13	-0.21	1631263.75	14549337.34	40°03'43.451"N	105°01'57.766"W	1.36	
324.00	1.230	279.900	323.99	0.03	-0.05	-0.81	1631263.15	14549337.42	40°03'43.452"N	105°01'57.773"W	0.78	
356.00	1.190	278.280	355.98	-0.10	0.06	-1.47	1631262.48	14549337.53	40°03'43.453"N	105°01'57.782"W	0.16	
387.00	1.010	273.710	386.97	-0.18	0.12	-2.07	1631261.89	14549337.60	40°03'43.453"N	105°01'57.790"W	0.65	
419.00	0.700	304.910	418.97	-0.33	0.25	-2.51	1631261.45	14549337.73	40°03'43.454"N	105°01'57.795"W	1.71	
451.00	0.830	308.510	450.97	-0.59	0.51	-2.85	1631261.11	14549337.98	40°03'43.457"N	105°01'57.800"W	0.43	
482.00	0.970	299.810	481.96	-0.87	0.78	-3.25	1631260.70	14549338.25	40°03'43.460"N	105°01'57.805"W	0.63	
514.00	0.880	307.460	513.96	-1.17	1.06	-3.68	1631260.27	14549338.54	40°03'43.462"N	105°01'57.810"W	0.48	
545.00	0.530	297.350	544.96	-1.39	1.27	-4.00	1631259.96	14549338.75	40°03'43.465"N	105°01'57.814"W	1.19	
577.00	0.260	261.400	576.96	-1.45	1.33	-4.20	1631259.76	14549338.80	40°03'43.465"N	105°01'57.817"W	1.11	
609.00	0.480	147.940	608.96	-1.33	1.21	-4.20	1631259.75	14549338.68	40°03'43.464"N	105°01'57.817"W	1.97	
641.00	0.920	144.420	640.95	-1.00	0.88	-3.98	1631259.97	14549338.36	40°03'43.461"N	105°01'57.814"W	1.38	
673.00	2.070	147.940	672.94	-0.29	0.18	-3.53	1631260.43	14549337.66	40°03'43.454"N	105°01'57.808"W	3.60	
704.00	2.640	148.030	703.91	0.81	-0.90	-2.85	1631261.11	14549336.58	40°03'43.443"N	105°01'57.800"W	1.84	
736.00	2.990	151.890	735.88	2.20	-2.26	-2.07	1631261.89	14549335.22	40°03'43.430"N	105°01'57.790"W	1.24	
768.00	3.380	166.480	767.83	3.87	-3.91	-1.45	1631262.50	14549333.56	40°03'43.413"N	105°01'57.782"W	2.80	
800.00	3.780	167.980	799.76	5.83	-5.86	-1.01	1631262.94	14549331.62	40°03'43.394"N	105°01'57.776"W	1.28	
832.00	4.040	176.770	831.69	7.99	-8.02	-0.73	1631263.22	14549329.46	40°03'43.373"N	105°01'57.772"W	2.04	
863.00	4.350	174.130	862.61	10.26	-10.28	-0.55	1631263.40	14549327.20	40°03'43.350"N	105°01'57.770"W	1.18	
895.00	4.480	177.030	894.51	12.72	-12.73	-0.36	1631263.59	14549324.75	40°03'43.326"N	105°01'57.768"W	0.81	
927.00	4.830	176.680	926.41	15.31	-15.33	-0.22	1631263.73	14549322.15	40°03'43.301"N	105°01'57.766"W	1.10	
958.00	5.540	172.200	957.28	18.10	-18.11	0.06	1631264.01	14549319.37	40°03'43.273"N	105°01'57.762"W	2.63	
990.00	6.500	170.260	989.10	21.43	-21.43	0.58	1631264.53	14549316.06	40°03'43.240"N	105°01'57.756"W	3.07	
1022.00	7.080	166.400	1020.88	25.16	-25.13	1.35	1631265.29	14549312.35	40°03'43.204"N	105°01'57.746"W	2.31	
1054.00	7.730	164.370	1052.61	29.18	-29.12	2.39	1631266.34	14549308.37	40°03'43.164"N	105°01'57.732"W	2.19	
1085.00	8.040	166.830	1083.32	33.32	-33.24	3.45	1631267.39	14549304.25	40°03'43.124"N	105°01'57.719"W	1.48	
1117.00	8.530	164.020	1114.98	37.82	-37.70	4.61	1631268.55	14549299.79	40°03'43.079"N	105°01'57.704"W	1.99	
1149.00	9.710	166.310	1146.58	42.76	-42.60	5.90	1631269.84	14549294.89	40°03'43.031"N	105°01'57.687"W	3.86	
1180.00	10.590	165.870	1177.09	48.10	-47.90	7.22	1631271.15	14549289.59	40°03'42.979"N	105°01'57.670"W	2.85	
1244.00	11.470	167.450	1239.91	60.09	-59.82	10.03	1631273.96	14549277.68	40°03'42.861"N	105°01'57.634"W	1.45	
1276.00	12.480	167.360	1271.21	66.61	-66.30	11.48	1631275.41	14549271.20	40°03'42.797"N	105°01'57.615"W	3.16	
1308.00	13.140	166.400	1302.42	73.56	-73.21	13.09	1631277.02	14549264.29	40°03'42.729"N	105°01'57.595"W	2.17	
1339.00	13.930	167.630	1332.56	80.68	-80.28	14.72	1631278.64	14549257.22	40°03'42.659"N	105°01'57.574"W	2.71	
1371.00	13.890	167.010	1363.62	88.23	-87.78	16.41	1631280.33	14549249.72	40°03'42.585"N	105°01'57.552"W	0.48	
1403.00	14.810	166.400	1394.62	96.00	-95.50	18.24	1631282.15	14549242.01	40°03'42.508"N	105°01'57.528"W	2.91	
1435.00	16.130	166.920	1425.46	104.36	-103.80	20.20	1631284.11	14549233.70	40°03'42.426"N	105°01'57.503"W	4.15	
1466.00	16.610	168.500	1455.20	112.94	-112.34	22.06	1631285.97	14549225.17	40°03'42.342"N	105°01'57.479"W	2.11	
1529.00	17.090	167.010	1515.50	130.89	-130.18	25.94	1631289.84	14549207.33	40°03'42.165"N	105°01'57.429"W	1.02	

REFERENCE WELLPATH IDENTIFICATION				
Operator	KERR-MCGEE OIL & GAS ONSHORE LP (WA)		Slot	SLOT#13 PAPA JO 2-25 35N2-17HZ(1404'FSL & 1294'FWL,SEC.08)
Area	COLORADO		Well	PAPA JO 2-25 35N2-17HZ
Field	WELD COUNTY (UTM/TRUE NORTH)		Wellbore	PAPA JO 2-25 35N2-17HZ AWP
Facility	SEC.08-T1N-R68W			

WELLPATH DATA (188 stations)												† = interpolated/extrapolated station
MD [ft]	Inclination [°]	Azimuth [°]	TVD [ft]	Vert Sect [ft]	North [ft]	East [ft]	Grid East [US ft]	Grid North [US ft]	Latitude	Longitude	DLS [°/100ft]	Comments
1561.00	17.530	166.400	1546.05	140.22	-139.45	28.13	1631292.02	14549198.07	40°03'42.074"N	105°01'57.401"W	1.49	
1593.00	17.970	167.800	1576.53	149.79	-148.96	30.30	1631294.19	14549188.56	40°03'41.980"N	105°01'57.373"W	1.92	
1625.00	18.280	169.380	1606.94	159.60	-158.72	32.27	1631296.16	14549178.81	40°03'41.884"N	105°01'57.348"W	1.82	
1656.00	18.110	171.230	1636.39	169.19	-168.26	33.90	1631297.78	14549169.27	40°03'41.789"N	105°01'57.327"W	1.94	
1688.00	17.490	170.350	1666.86	178.88	-177.91	35.47	1631299.34	14549159.62	40°03'41.694"N	105°01'57.307"W	2.11	
1720.00	17.230	168.070	1697.40	188.31	-187.29	37.25	1631301.13	14549150.24	40°03'41.601"N	105°01'57.284"W	2.28	
1752.00	17.670	168.680	1727.93	197.76	-196.69	39.19	1631303.05	14549140.85	40°03'41.508"N	105°01'57.259"W	1.49	
1783.00	18.280	168.860	1757.41	207.20	-206.07	41.05	1631304.91	14549131.47	40°03'41.416"N	105°01'57.235"W	1.98	
1815.00	18.190	168.590	1787.81	217.07	-215.89	43.01	1631306.87	14549121.65	40°03'41.318"N	105°01'57.210"W	0.39	
1839.00	18.410	167.270	1810.59	224.48	-223.26	44.58	1631308.44	14549114.28	40°03'41.246"N	105°01'57.190"W	1.96	LAST SURFACE MWD+IFR1 SURVEY
1933.00	17.640	169.400	1899.98	253.12	-251.74	50.47	1631314.32	14549085.81	40°03'40.964"N	105°01'57.114"W	1.08	FIRST BHGE MWD+IFR1+SC SURVEY
2023.00	17.030	167.210	1985.89	279.53	-278.00	55.90	1631319.73	14549059.57	40°03'40.705"N	105°01'57.044"W	0.99	
2112.00	17.230	162.690	2070.95	305.01	-303.29	62.71	1631326.53	14549034.28	40°03'40.455"N	105°01'56.957"W	1.51	
2201.00	16.910	162.670	2156.03	330.17	-328.23	70.49	1631334.29	14549009.35	40°03'40.208"N	105°01'56.856"W	0.36	
2291.00	17.600	166.760	2241.98	356.11	-353.97	77.50	1631341.30	14548983.61	40°03'39.954"N	105°01'56.766"W	1.55	
2381.00	17.790	169.780	2327.72	383.04	-380.75	83.06	1631346.84	14548956.85	40°03'39.689"N	105°01'56.695"W	1.04	
2470.00	18.010	170.140	2412.41	410.10	-407.69	87.83	1631351.60	14548929.92	40°03'39.423"N	105°01'56.633"W	0.28	
2560.00	18.430	170.460	2497.90	437.97	-435.42	92.57	1631356.32	14548902.19	40°03'39.149"N	105°01'56.573"W	0.48	
2649.00	18.410	171.010	2582.34	465.85	-463.18	97.09	1631360.84	14548874.44	40°03'38.875"N	105°01'56.514"W	0.20	
2739.00	18.370	169.820	2667.75	493.97	-491.17	101.82	1631365.55	14548846.46	40°03'38.598"N	105°01'56.453"W	0.42	
2787.00†	18.449	167.517	2713.29	508.91	-506.03	104.80	1631368.53	14548831.60	40°03'38.451"N	105°01'56.415"W	1.52	ENTER LANDBOX (898'FSL & 1398'FWL,SEC.08) 40.0606809 -105.0323375
2829.00	18.540	165.520	2753.12	521.95	-518.99	107.91	1631371.63	14548818.65	40°03'38.323"N	105°01'56.375"W	1.52	
2918.00	18.400	165.580	2837.54	549.45	-546.29	114.94	1631378.65	14548791.36	40°03'38.053"N	105°01'56.285"W	0.16	
3008.00	16.920	169.300	2923.30	576.24	-572.92	120.91	1631384.61	14548764.74	40°03'37.790"N	105°01'56.208"W	2.07	
3097.00	14.190	168.700	3009.03	599.79	-596.35	125.45	1631389.14	14548741.32	40°03'37.559"N	105°01'56.150"W	3.07	
3187.00	13.540	167.880	3096.41	621.03	-617.47	129.83	1631393.50	14548720.21	40°03'37.350"N	105°01'56.093"W	0.75	
3276.00	11.640	168.110	3183.26	640.12	-636.44	133.86	1631397.53	14548701.24	40°03'37.163"N	105°01'56.041"W	2.14	
3366.00	11.440	169.440	3271.44	657.87	-654.10	137.37	1631401.03	14548683.59	40°03'36.988"N	105°01'55.996"W	0.37	
3455.00	9.310	170.250	3358.98	673.72	-669.87	140.21	1631403.86	14548667.82	40°03'36.832"N	105°01'55.960"W	2.40	
3545.00	8.720	167.090	3447.87	687.62	-683.70	142.97	1631406.61	14548654.00	40°03'36.696"N	105°01'55.924"W	0.86	
3635.00	8.010	168.300	3536.91	700.49	-696.49	145.76	1631409.40	14548641.21	40°03'36.569"N	105°01'55.888"W	0.81	
3724.00	6.390	167.600	3625.21	711.46	-707.40	148.08	1631411.72	14548630.31	40°03'36.461"N	105°01'55.859"W	1.82	
3814.00	5.050	169.680	3714.76	720.30	-716.19	149.87	1631413.50	14548621.52	40°03'36.374"N	105°01'55.836"W	1.51	
3903.00	3.960	170.920	3803.48	727.22	-723.08	151.05	1631414.68	14548614.63	40°03'36.306"N	105°01'55.820"W	1.23	
3993.00	3.230	174.300	3893.30	732.83	-728.67	151.80	1631415.42	14548609.04	40°03'36.251"N	105°01'55.811"W	0.84	
4082.00	1.790	169.040	3982.22	736.71	-732.53	152.31	1631415.94	14548605.18	40°03'36.213"N	105°01'55.804"W	1.64	
4172.00	0.710	165.390	4072.19	738.64	-734.45	152.72	1631416.34	14548603.27	40°03'36.194"N	105°01'55.799"W	1.20	
4262.00	1.020	194.590	4162.18	739.95	-735.76	152.66	1631416.28	14548601.95	40°03'36.181"N	105°01'55.800"W	0.59	
4351.00	1.080	108.810	4251.17	741.00	-736.80	153.25	1631416.87	14548600.91	40°03'36.171"N	105°01'55.792"W	1.61	
4440.00	0.540	121.850	4340.16	741.53	-737.29	154.40	1631418.02	14548600.42	40°03'36.166"N	105°01'55.777"W	0.64	
4530.00	0.200	196.220	4430.16	741.91	-737.66	154.72	1631418.34	14548600.05	40°03'36.162"N	105°01'55.773"W	0.58	
4619.00	0.580	243.550	4519.16	742.25	-738.01	154.27	1631417.89	14548599.70	40°03'36.159"N	105°01'55.779"W	0.53	
4709.00	0.950	252.890	4609.15	742.64	-738.44	153.15	1631416.77	14548599.28	40°03'36.155"N	105°01'55.793"W	0.43	
4824.00	1.210	272.550	4724.13	742.80	-738.66	151.03	1631414.65	14548599.05	40°03'36.152"N	105°01'55.821"W	0.39	
4913.00	1.450	268.180	4813.11	742.74	-738.66	148.96	1631412.59	14548599.06	40°03'36.152"N	105°01'55.847"W	0.29	

REFERENCE WELLPATH IDENTIFICATION				
Operator	KERR-MCGEE OIL & GAS ONSHORE LP (WA)		Slot	SLOT#13 PAPA JO 2-25 35N2-17HZ(1404'FSL & 1294'FWL,SEC.08)
Area	COLORADO		Well	PAPA JO 2-25 35N2-17HZ
Field	WELD COUNTY (UTM/TRUE NORTH)		Wellbore	PAPA JO 2-25 35N2-17HZ AWP
Facility	SEC.08-T1N-R68W			

WELLPATH DATA (188 stations) † = interpolated/extrapolated station												
MD [ft]	Inclination [°]	Azimuth [°]	TVD [ft]	Vert Sect [ft]	North [ft]	East [ft]	Grid East [US ft]	Grid North [US ft]	Latitude	Longitude	DLS [°/100ft]	Comments
5002.00	0.990	26.690	4902.10	742.06	-738.01	148.18	1631411.81	14548599.71	40°03'36.159"N	105°01'55.857"W	2.37	
5092.00	1.060	9.390	4992.08	740.56	-736.49	148.67	1631412.29	14548601.22	40°03'36.174"N	105°01'55.851"W	0.35	
5181.00	0.830	352.560	5081.07	739.11	-735.04	148.72	1631412.34	14548602.68	40°03'36.188"N	105°01'55.850"W	0.40	
5270.00	0.800	331.770	5170.06	737.91	-733.85	148.34	1631411.97	14548603.86	40°03'36.200"N	105°01'55.855"W	0.33	
5360.00	1.610	318.320	5260.04	736.38	-732.35	147.20	1631410.83	14548605.36	40°03'36.215"N	105°01'55.870"W	0.95	
5449.00	1.390	22.930	5349.02	734.44	-730.43	146.79	1631410.42	14548607.29	40°03'36.234"N	105°01'55.875"W	1.81	
5539.00	1.180	20.950	5439.00	732.60	-728.56	147.55	1631411.18	14548609.16	40°03'36.252"N	105°01'55.865"W	0.24	
5629.00	0.920	20.390	5528.98	731.07	-727.01	148.13	1631411.76	14548610.70	40°03'36.267"N	105°01'55.858"W	0.29	
5718.00	0.690	30.300	5617.97	729.95	-725.88	148.65	1631412.28	14548611.83	40°03'36.279"N	105°01'55.851"W	0.30	
5807.00	0.680	36.630	5706.96	729.09	-724.99	149.24	1631412.86	14548612.72	40°03'36.287"N	105°01'55.844"W	0.09	
5897.00	0.350	90.790	5796.96	728.68	-724.57	149.83	1631413.46	14548613.14	40°03'36.292"N	105°01'55.836"W	0.61	
5987.00	1.230	32.840	5886.95	727.90	-723.76	150.63	1631414.26	14548613.95	40°03'36.300"N	105°01'55.826"W	1.21	
6076.00	1.020	30.790	5975.94	726.44	-722.28	151.55	1631415.18	14548615.43	40°03'36.314"N	105°01'55.814"W	0.24	
6166.00	1.120	34.850	6065.92	725.06	-720.87	152.46	1631416.09	14548616.84	40°03'36.328"N	105°01'55.802"W	0.14	
6255.00	1.050	38.730	6154.90	723.74	-719.52	153.47	1631417.10	14548618.19	40°03'36.342"N	105°01'55.789"W	0.11	
6345.00	1.410	356.500	6244.89	722.00	-717.77	153.92	1631417.55	14548619.94	40°03'36.359"N	105°01'55.783"W	1.05	
6434.00	1.240	14.650	6333.86	719.98	-715.74	154.10	1631417.73	14548621.96	40°03'36.379"N	105°01'55.781"W	0.51	
6524.00	0.650	9.320	6423.85	718.55	-714.30	154.43	1631418.06	14548623.40	40°03'36.393"N	105°01'55.777"W	0.66	
6613.00	0.690	336.590	6512.84	717.56	-713.31	154.29	1631417.93	14548624.39	40°03'36.403"N	105°01'55.779"W	0.43	
6703.00	0.490	315.700	6602.84	716.77	-712.54	153.81	1631417.44	14548625.17	40°03'36.411"N	105°01'55.785"W	0.32	
6792.00	0.590	289.290	6691.83	716.33	-712.11	153.11	1631416.74	14548625.59	40°03'36.415"N	105°01'55.794"W	0.30	
6882.00	0.570	281.620	6781.83	716.06	-711.87	152.24	1631415.87	14548625.83	40°03'36.417"N	105°01'55.805"W	0.09	
6941.00†	2.286	185.672	6840.81	717.16	-712.98	151.83	1631415.46	14548624.72	40°03'36.406"N	105°01'55.810"W	4.09	KOP
6971.00	3.490	180.930	6870.78	718.66	-714.49	151.76	1631415.39	14548623.22	40°03'36.391"N	105°01'55.811"W	4.09	
7061.00	12.050	178.940	6959.87	730.81	-726.64	151.89	1631415.52	14548611.07	40°03'36.271"N	105°01'55.810"W	9.51	
7150.00	15.830	180.760	7046.23	752.24	-748.08	151.90	1631415.52	14548589.64	40°03'36.059"N	105°01'55.809"W	4.28	
7240.00	22.180	183.540	7131.28	781.45	-777.34	150.69	1631414.29	14548560.39	40°03'35.770"N	105°01'55.825"W	7.12	
7330.00	27.590	182.160	7212.90	819.19	-815.15	148.85	1631412.45	14548522.60	40°03'35.397"N	105°01'55.849"W	6.05	
7419.00	34.840	181.820	7288.96	865.19	-861.22	147.26	1631410.84	14548476.55	40°03'34.941"N	105°01'55.869"W	8.15	
7509.00	41.940	177.190	7359.47	921.00	-917.03	147.92	1631411.48	14548420.75	40°03'34.390"N	105°01'55.861"W	8.51	
7598.00	48.920	177.340	7421.89	984.36	-980.33	150.94	1631414.48	14548357.49	40°03'33.764"N	105°01'55.822"W	7.84	
7687.00	54.690	179.640	7476.91	1054.26	-1050.21	152.73	1631416.24	14548287.63	40°03'33.074"N	105°01'55.799"W	6.79	
7777.00	61.560	178.020	7524.41	1130.64	-1126.57	154.33	1631417.81	14548211.30	40°03'32.319"N	105°01'55.778"W	7.78	
7867.00	67.770	178.850	7562.90	1211.94	-1207.85	156.53	1631419.98	14548130.06	40°03'31.516"N	105°01'55.750"W	6.95	
7956.00	73.920	177.330	7592.09	1295.97	-1291.83	159.35	1631422.77	14548046.11	40°03'30.686"N	105°01'55.714"W	7.10	
8046.00	81.350	178.610	7611.35	1383.82	-1379.62	162.45	1631425.84	14547958.35	40°03'29.818"N	105°01'55.674"W	8.37	
8092.00†	84.498	178.584	7617.02	1429.46	-1425.25	163.57	1631426.94	14547912.73	40°03'29.367"N	105°01'55.659"W	6.84	LANDING (21'FNL & 1458'FWL,SEC.17) 40.0581576 -105.0321276
8136.00	87.510	178.560	7620.08	1473.35	-1469.13	164.66	1631428.01	14547868.88	40°03'28.934"N	105°01'55.645"W	6.84	
8225.00	89.660	178.080	7622.28	1562.32	-1558.05	167.27	1631430.59	14547779.98	40°03'28.055"N	105°01'55.612"W	2.48	
8315.00	90.430	177.770	7622.21	1652.31	-1648.00	170.53	1631433.81	14547690.08	40°03'27.166"N	105°01'55.570"W	0.92	
8404.00	90.460	177.190	7621.52	1741.30	-1736.91	174.44	1631437.69	14547601.20	40°03'26.288"N	105°01'55.520"W	0.65	
8494.00	90.550	175.640	7620.72	1831.25	-1826.72	180.07	1631443.28	14547511.42	40°03'25.400"N	105°01'55.447"W	1.73	
8523.00†	90.283	175.721	7620.51	1860.21	-1855.64	182.25	1631445.46	14547482.51	40°03'25.114"N	105°01'55.419"W	0.96	EXIT RADIUS HEEL (452'FNL & 1476'FWL,SEC.17) 40.0569762 -105.0320609
8584.00	89.720	175.890	7620.51	1921.16	-1916.48	186.72	1631449.89	14547421.70	40°03'24.513"N	105°01'55.362"W	0.96	
8673.00	89.850	178.240	7620.85	2010.13	-2005.35	191.27	1631454.42	14547332.86	40°03'23.635"N	105°01'55.303"W	2.64	

REFERENCE WELLPATH IDENTIFICATION			
Operator	KERR-MCGEE OIL & GAS ONSHORE LP (WA)	Slot	SLOT#13 PAPA JO 2-25 35N2-17HZ(1404'FSL & 1294'FWL,SEC.08)
Area	COLORADO	Well	PAPA JO 2-25 35N2-17HZ
Field	WELD COUNTY (UTM/TRUE NORTH)	Wellbore	PAPA JO 2-25 35N2-17HZ AWB
Facility	SEC.08-T1N-R68W		

WELLPATH DATA (188 stations)												
MD [ft]	Inclination [°]	Azimuth [°]	TVD [ft]	Vert Sect [ft]	North [ft]	East [ft]	Grid East [US ft]	Grid North [US ft]	Latitude	Longitude	DLS [°/100ft]	Comments
8762.00	89.910	176.540	7621.03	2099.11	-2094.26	195.33	1631458.43	14547243.99	40°03'22.756"N	105°01'55.251"W	1.91	
8852.00	88.580	177.240	7622.22	2189.08	-2184.11	200.21	1631463.28	14547154.16	40°03'21.868"N	105°01'55.188"W	1.67	
8942.00	88.830	178.850	7624.25	2279.05	-2274.04	203.28	1631466.32	14547064.28	40°03'20.979"N	105°01'55.149"W	1.81	
9031.00	88.890	179.730	7626.02	2368.02	-2363.01	204.38	1631467.39	14546975.34	40°03'20.100"N	105°01'55.135"W	0.99	
9121.00	89.110	179.260	7627.59	2457.98	-2452.99	205.17	1631468.15	14546885.39	40°03'19.211"N	105°01'55.124"W	0.58	
9210.00	89.780	178.990	7628.46	2546.97	-2541.98	206.53	1631469.47	14546796.44	40°03'18.332"N	105°01'55.107"W	0.81	
9299.00	90.460	178.660	7628.27	2635.97	-2630.96	208.36	1631471.26	14546707.50	40°03'17.452"N	105°01'55.084"W	0.85	
9389.00	88.980	178.290	7628.71	2725.96	-2720.92	210.75	1631473.62	14546617.57	40°03'16.563"N	105°01'55.053"W	1.70	
9479.00	88.800	178.420	7630.45	2815.94	-2810.87	213.34	1631476.17	14546527.66	40°03'15.674"N	105°01'55.020"W	0.25	
9568.00	88.770	177.820	7632.34	2904.92	-2899.80	216.25	1631479.06	14546438.76	40°03'14.796"N	105°01'54.982"W	0.67	
9658.00	90.030	177.600	7633.28	2994.91	-2989.72	219.85	1631482.62	14546348.87	40°03'13.907"N	105°01'54.936"W	1.42	
9747.00	89.690	176.810	7633.50	3083.89	-3078.61	224.19	1631486.93	14546260.01	40°03'13.028"N	105°01'54.880"W	0.97	
9837.00	90.590	177.190	7633.28	3173.87	-3168.49	228.90	1631491.60	14546170.17	40°03'12.140"N	105°01'54.819"W	1.09	
9926.00	91.790	178.770	7631.43	3262.84	-3257.41	232.04	1631494.70	14546081.29	40°03'11.262"N	105°01'54.779"W	2.23	
10016.00	92.090	177.970	7628.38	3352.79	-3347.32	234.60	1631497.23	14545991.41	40°03'10.373"N	105°01'54.746"W	0.95	
10105.00	92.620	177.790	7624.73	3441.71	-3436.19	237.89	1631500.48	14545902.58	40°03'09.495"N	105°01'54.704"W	0.63	
10195.00	91.790	177.870	7621.26	3531.64	-3526.05	241.29	1631503.85	14545812.75	40°03'08.607"N	105°01'54.660"W	0.93	
10285.00	91.200	178.600	7618.92	3621.61	-3615.98	244.06	1631506.59	14545722.86	40°03'07.718"N	105°01'54.625"W	1.04	
10374.00	91.690	178.680	7616.67	3710.58	-3704.93	246.17	1631508.67	14545633.95	40°03'06.839"N	105°01'54.597"W	0.56	
10464.00	89.690	179.000	7615.59	3800.57	-3794.90	247.99	1631510.46	14545544.01	40°03'05.950"N	105°01'54.574"W	2.25	
10554.00	90.150	178.430	7615.71	3890.56	-3884.87	250.01	1631512.44	14545454.07	40°03'05.061"N	105°01'54.548"W	0.81	
10643.00	90.800	178.420	7614.98	3979.56	-3973.84	252.46	1631514.85	14545365.14	40°03'04.182"N	105°01'54.517"W	0.73	
10733.00	91.320	178.360	7613.31	4069.54	-4063.78	254.99	1631517.35	14545275.23	40°03'03.293"N	105°01'54.484"W	0.58	
10822.00	92.160	178.550	7610.61	4158.50	-4152.71	257.39	1631519.71	14545186.34	40°03'02.414"N	105°01'54.453"W	0.97	
10912.00	91.330	178.130	7607.87	4248.46	-4242.63	259.99	1631522.28	14545096.45	40°03'01.525"N	105°01'54.420"W	1.03	
11001.00	90.490	177.160	7606.45	4337.44	-4331.54	263.65	1631525.91	14545007.58	40°03'00.647"N	105°01'54.373"W	1.44	
11091.00	89.350	177.910	7606.58	4427.43	-4421.46	267.52	1631529.74	14544917.70	40°02'59.758"N	105°01'54.323"W	1.52	
11180.00	89.410	178.900	7607.54	4516.42	-4510.42	270.00	1631532.19	14544828.77	40°02'58.879"N	105°01'54.291"W	1.11	
11270.00	90.180	178.930	7607.87	4606.42	-4600.40	271.70	1631533.86	14544738.82	40°02'57.990"N	105°01'54.269"W	0.86	
11359.00	90.830	178.620	7607.08	4695.41	-4689.37	273.60	1631535.73	14544649.88	40°02'57.111"N	105°01'54.245"W	0.81	
11449.00	91.390	177.650	7605.34	4785.39	-4779.31	276.53	1631538.62	14544559.98	40°02'56.222"N	105°01'54.207"W	1.24	
11539.00	92.100	178.200	7602.60	4875.35	-4869.21	279.79	1631541.84	14544470.12	40°02'55.333"N	105°01'54.165"W	1.00	
11628.00	90.000	178.080	7600.97	4964.33	-4958.14	282.68	1631544.70	14544381.22	40°02'54.455"N	105°01'54.128"W	2.36	
11718.00	90.560	178.660	7600.53	5054.32	-5048.10	285.24	1631547.22	14544291.30	40°02'53.565"N	105°01'54.095"W	0.90	
11807.00	91.480	178.430	7598.94	5143.31	-5137.06	287.50	1631549.45	14544202.38	40°02'52.686"N	105°01'54.066"W	1.07	
11897.00	92.100	178.890	7596.13	5233.26	-5226.99	289.60	1631551.52	14544112.48	40°02'51.798"N	105°01'54.039"W	0.86	
11987.00	90.400	178.260	7594.17	5323.24	-5316.94	291.84	1631553.72	14544022.57	40°02'50.909"N	105°01'54.010"W	2.01	
12076.00	90.400	178.240	7593.55	5412.23	-5405.89	294.56	1631556.41	14543933.65	40°02'50.030"N	105°01'53.975"W	0.02	
12166.00	91.910	178.820	7591.73	5502.21	-5495.84	296.86	1631558.68	14543843.73	40°02'49.141"N	105°01'53.946"W	1.80	
12256.00	92.190	178.880	7588.51	5592.15	-5585.76	298.67	1631560.45	14543753.84	40°02'48.252"N	105°01'53.923"W	0.32	
12345.00	90.520	177.360	7586.41	5681.12	-5674.69	301.59	1631563.34	14543664.96	40°02'47.373"N	105°01'53.885"W	2.54	
12435.00	91.570	177.600	7584.77	5771.09	-5764.58	305.54	1631567.26	14543575.10	40°02'46.485"N	105°01'53.834"W	1.20	
12525.00	90.150	177.900	7583.42	5861.08	-5854.50	309.08	1631570.76	14543485.21	40°02'45.596"N	105°01'53.789"W	1.61	
12614.00	90.860	177.390	7582.63	5950.07	-5943.42	312.73	1631574.38	14543396.33	40°02'44.718"N	105°01'53.742"W	0.98	
12704.00	90.280	178.120	7581.74	6040.06	-6033.35	316.26	1631577.87	14543306.44	40°02'43.829"N	105°01'53.696"W	1.04	

REFERENCE WELLPATH IDENTIFICATION			
Operator	KERR-MCGEE OIL & GAS ONSHORE LP (WA)	Slot	SLOT#13 PAPA JO 2-25 35N2-17HZ(1404'FSL & 1294'FWL,SEC.08)
Area	COLORADO	Well	PAPA JO 2-25 35N2-17HZ
Field	WELD COUNTY (UTM/TRUE NORTH)	Wellbore	PAPA JO 2-25 35N2-17HZ AWB
Facility	SEC.08-T1N-R68W		

WELLPATH DATA (188 stations) † = interpolated/extrapolated station											
MD [ft]	Inclination [°]	Azimuth [°]	TVD [ft]	Vert Sect [ft]	North [ft]	East [ft]	Grid East [US ft]	Grid North [US ft]	Latitude	Longitude	DLS ["/100ft]
12793.00	90.860	178.240	7580.85	6129.05	-6122.30	319.09	1631580.66	14543217.52	40°02'42.950"N	105°01'53.660"W	0.67
12883.00	89.600	176.720	7580.49	6219.04	-6212.21	323.04	1631584.59	14543127.65	40°02'42.062"N	105°01'53.609"W	2.19
12957.00†	90.731	177.310	7580.28	6293.02	-6286.10	326.90	1631588.41	14543053.78	40°02'41.331"N	105°01'53.560"W	1.72
12972.00	90.960	177.430	7580.05	6308.01	-6301.09	327.58	1631589.09	14543038.80	40°02'41.183"N	105°01'53.551"W	1.72
13061.00	90.520	177.220	7578.91	6396.99	-6389.98	331.74	1631593.21	14542949.94	40°02'40.305"N	105°01'53.498"W	0.55
13151.00	91.510	177.850	7577.31	6486.97	-6479.88	335.61	1631597.05	14542860.07	40°02'39.416"N	105°01'53.448"W	1.30
13251.00	92.680	177.660	7573.66	6586.90	-6579.74	339.52	1631600.92	14542760.26	40°02'38.429"N	105°01'53.397"W	1.19
13297.00	92.680	177.660	7571.50	6632.84	-6625.65	341.40	1631602.78	14542714.36	40°02'37.976"N	105°01'53.373"W	0.00

TARGETS								
Name	TVD [ft]	North [ft]	East [ft]	Grid East [US ft]	Grid North [US ft]	Latitude	Longitude	Shape
SEC.08-T1N-R68W	-2.00	0.40	-90.12	1631173.88	14549337.91	40°03'43.456"N	105°01'58.922"W	polygon
SEC.17-T1N-R68W	-2.00	0.40	-90.12	1631173.88	14549337.91	40°03'43.456"N	105°01'58.922"W	polygon
PAPA JO 2-25 35N2-17HZ BHL REV-1(50'FSL & 1565'FWL,SEC.17)	7578.00	-6626.03	331.47	1631592.86	14542713.98	40°02'37.972"N	105°01'53.501"W	point
PAPA JO 2-25 35N2-17HZ HEEL REV-1(50'FNL & 1405'FWL,SEC.17)	7612.00	-1452.06	178.58	1631441.93	14547885.93	40°03'29.102"N	105°01'55.466"W	point
PAPA JO 2-25 35N2-17HZ LANDBOX	7612.00	0.00	0.00	1631263.96	14549337.47	40°03'43.452"N	105°01'57.763"W	polygon
PAPA JO 2-25 35N2-17HZ RADIUS 1	7612.00	-6679.72	90.13	1631351.60	14542660.40	40°02'37.441"N	105°01'56.604"W	polygon
PAPA JO 2-25 35N2-17HZ RADIUS 2	7612.00	-1403.00	97.40	1631360.80	14547935.00	40°03'29.587"N	105°01'56.510"W	polygon
PAPA JO 2-25 35N2-17HZ INT. TARGET@2900'VS	7630.00	-2894.73	221.21	1631484.01	14546443.83	40°03'14.846"N	105°01'54.918"W	point

WELLPATH COMPOSITION - Ref Wellbore: PAPA JO 2-25 35N2-17HZ AWB				Ref Wellpath: PAPA JO 2-25 35N2-17HZ AWP		
Start MD [ft]	End MD [ft]	Positional Uncertainty Model		Log Name/Comment		Wellbore
26.00	1839.00	Custom APC ISCWSA REV 2 MWD+IFR1 (approximation)		Custom APC ISCWSA Rev-2 MWD+IFR1 <135 - 1839>		PAPA JO 2-25 35N2-17HZ AWB
1839.00	13251.00	Custom APC ISCWSA REV 2 MWD+IFR1+SC (approximation)		BHGE Custom APC ISCWSA Rev-2 MWD+IFR1+SC <1933 - 13251>		PAPA JO 2-25 35N2-17HZ AWB
13251.00	13297.00	Blind Drilling (std)		Projection to bit		PAPA JO 2-25 35N2-17HZ AWB

REFERENCE WELLPATH IDENTIFICATION			
Operator	KERR-MCGEE OIL & GAS ONSHORE LP (WA)	Slot	SLOT#13 PAPA JO 2-25 35N2-17HZ(1404'FSL & 1294'FWL,SEC.08)
Area	COLORADO	Well	PAPA JO 2-25 35N2-17HZ
Field	WELD COUNTY (UTM/TRUE NORTH)	Wellbore	PAPA JO 2-25 35N2-17HZ AWB
Facility	SEC.08-T1N-R68W		

WELLPATH COMMENTS				
MD [ft]	Inclination [°]	Azimuth [°]	TVD [ft]	Comment
135.00	0.400	94.150	135.00	FIRST SURFACE MWD+IFR1 SURVEY
1839.00	18.410	167.270	1810.59	LAST SURFACE MWD+IFR1 SURVEY
1933.00	17.640	169.400	1899.98	FIRST BHGE MWD+IFR1+SC SURVEY
2787.00	18.449	167.517	2713.29	ENTER LANDBOX (898'FSL & 1398'FWL,SEC.08) 40.0606809 -105.0323375
6941.00	2.286	185.672	6840.81	KOP
8092.00	84.498	178.584	7617.02	LANDING (21'FNL & 1458'FWL,SEC.17) 40.0581576 -105.0321276
8523.00	90.283	175.721	7620.51	EXIT RADIUS HEEL (452'FNL & 1476'FWL,SEC.17) 40.0569762 -105.0320609
12957.00	90.731	177.310	7580.28	ENTER RADIUS TOE (390'FSL & 1561'FWL,SEC.17) 40.0448142 -105.0315444
13251.00	92.680	177.660	7573.66	LAST BHGE MWD+IFR1+SC SURVEY
13297.00	92.680	177.660	7571.50	PTB (50'FSL & 1575'FWL,SEC.17) 40.0438822 -105.0314926