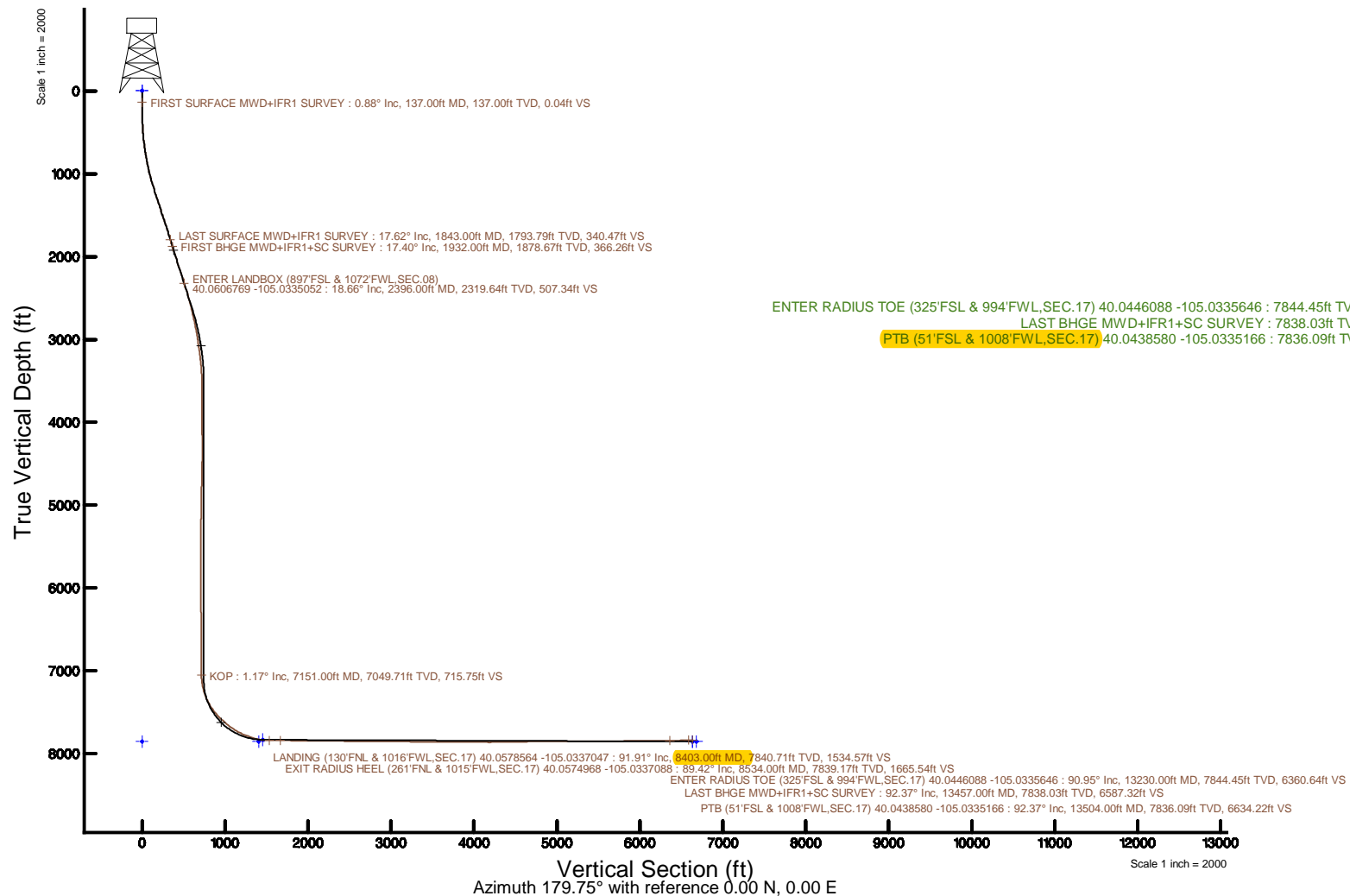


Location:	COLORADO	Slot:	SLOT#09 PAPA JO 2-25 35C-17HZ(1405FSL & 1204FWL_SEC.08)
Field:	WELD COUNTY (UTM/TRUE NORTH)	Well:	PAPA JO 2-25 35C-17HZ
Facility:	SEC.08-T1N-R68W	Wellbore:	PAPA JO 2-25 35C-17HZ PWB
Plot reference wellpath is PAPA JO 2-25 35C-17HZ PWPW RevA.0		Grid System: NAD83 / UTM Zone 13 North, US feet	
True vertical depths are referenced to PD 564 (26) (RT)		* = Wellpath was transformed from a different geoid; datum	
Measured depths are referenced to PD 564 (26) (RT)		North Reference: True north	
PD 564 (26) (RT) to Mean Sea Level: 5089 feet		Scale: True distance	
Mean Sea Level to Mud line (At Slot: SLOTR09 PAPA JO 2-25 35C-17HZ(1405FSL & 1204FWL_SEC.08)) 0 feet		Depths are in feet	
Coordinates are in feet referenced to Slot		Created by: painstmr on 2018-02-02	
		Database: WPA_DEN_Anadarko_Delhi	



REFERENCE WELLPATH IDENTIFICATION

Operator	KERR-MCGEE OIL & GAS ONSHORE LP (WA)	Slot	SLOT#09 PAPA JO 2-25 35C-17HZ(1405'FSL & 1204'FWL,SEC.08)
Area	COLORADO	Well	PAPA JO 2-25 35C-17HZ
Field	WELD COUNTY (UTM/TRUE NORTH)	Wellbore	PAPA JO 2-25 35C-17HZ AWB
Facility	SEC.08-T1N-R68W		

REPORT SETUP INFORMATION

Projection System	NAD83 / UTM Zone 13 North, US feet	Software System	WellArchitect® 5.0
North Reference	True	User	Painsetr
Scale	0.999600	Report Generated	2/2/2018 at 1:23 PM
Convergence at slot	0.03° West	Database/Source file	WA_DEN_Anadarko_Defn/PAPA_JO_2-25_35C-17HZ_AWP.xml

WELLPATH LOCATION

	Local coordinates		Grid coordinates		Geographic coordinates	
	North[ft]	East[ft]	Easting[US ft]	Northing[US ft]	Latitude	Longitude
Slot Location	-841.09	-1033.96	1631173.88	14549337.91	40°03'43.456"N	105°01'58.922"W
Facility Reference Pt			1632207.69	14550178.32	40°03'51.768"N	105°01'45.624"W
Field Reference Pt			1698235.31	14552047.82	40°04'09.600"N	104°47'36.000"W

WELLPATH DATUM

Calculation method	Minimum curvature	PD 564 (26') (RT) to Facility Vertical Datum	5089.00ft
Horizontal Reference Pt	Slot	PD 564 (26') (RT) to Mean Sea Level	5089.00ft
Vertical Reference Pt	PD 564 (26') (RT)	PD 564 (26') (RT) to Mud Line at Slot (SLOT#09 PAPA JO 2-25 35C-17HZ(1405'FSL & 1204'FWL,SEC.08))	5089.00ft
MD Reference Pt	PD 564 (26') (RT)	Section Origin	N 0.00, E 0.00 ft
Field Vertical Reference	Mean Sea Level	Section Azimuth	179.75°

REFERENCE WELLPATH IDENTIFICATION			
Operator	KERR-MCGEE OIL & GAS ONSHORE LP (WA)	Slot	SLOT#09 PAPA JO 2-25 35C-17HZ(1405'FSL & 1204'FWL,SEC.08)
Area	COLORADO	Well	PAPA JO 2-25 35C-17HZ
Field	WELD COUNTY (UTM/TRUE NORTH)	Wellbore	PAPA JO 2-25 35C-17HZ AWP
Facility	SEC.08-T1N-R68W		

WELLPATH DATA (191 stations) † = interpolated/extrapolated station												
MD (ft)	Inclination (°)	Azimuth (°)	TVD (ft)	Vert Sect (ft)	North (ft)	East (ft)	Grid East (US ft)	Grid North (US ft)	Latitude	Longitude	DLS (°/100ft)	Comments
0.00†	0.000	92.300	0.00	0.00	0.00	0.00	1631173.88	14549337.91	40°03'43.456"N	105°01'58.922"W	0.00	
26.00	0.000	92.300	26.00	0.00	0.00	0.00	1631173.88	14549337.91	40°03'43.456"N	105°01'58.922"W	0.00	
137.00	0.880	92.300	137.00	0.04	-0.03	0.85	1631174.73	14549337.88	40°03'43.456"N	105°01'58.911"W	0.79	FIRST SURFACE MWD+IFR1 SURVEY
169.00	0.700	113.570	168.99	0.13	-0.12	1.28	1631175.15	14549337.79	40°03'43.455"N	105°01'58.906"W	1.07	
201.00	0.830	173.600	200.99	0.44	-0.43	1.48	1631175.36	14549337.48	40°03'43.452"N	105°01'58.903"W	2.42	
232.00	0.830	172.370	231.99	0.88	-0.88	1.54	1631175.41	14549337.03	40°03'43.447"N	105°01'58.902"W	0.06	
263.00	1.050	208.670	262.98	1.35	-1.35	1.43	1631175.31	14549336.56	40°03'43.443"N	105°01'58.904"W	2.01	
294.00	1.670	206.740	293.97	2.01	-2.00	1.09	1631174.97	14549335.91	40°03'43.436"N	105°01'58.908"W	2.01	
326.00	2.020	194.430	325.96	2.97	-2.96	0.74	1631174.62	14549334.95	40°03'43.427"N	105°01'58.912"W	1.65	
357.00	2.070	210.870	356.94	3.97	-3.97	0.32	1631174.19	14549333.94	40°03'43.417"N	105°01'58.918"W	1.89	
389.00	2.810	206.120	388.91	5.17	-5.17	-0.33	1631173.55	14549332.74	40°03'43.405"N	105°01'58.926"W	2.40	
421.00	2.770	201.380	420.87	6.59	-6.60	-0.95	1631172.92	14549331.32	40°03'43.391"N	105°01'58.934"W	0.73	
452.00	3.650	200.500	451.82	8.21	-8.22	-1.57	1631172.30	14549329.70	40°03'43.375"N	105°01'58.942"W	2.84	
484.00	4.040	207.620	483.75	10.16	-10.17	-2.45	1631171.42	14549327.74	40°03'43.355"N	105°01'58.954"W	1.92	
516.00	4.390	203.130	515.66	12.28	-12.30	-3.45	1631170.42	14549325.62	40°03'43.334"N	105°01'58.966"W	1.50	
547.00	5.410	199.440	546.55	14.75	-14.77	-4.41	1631169.47	14549323.15	40°03'43.310"N	105°01'58.979"W	3.44	
580.00	6.810	198.040	579.36	18.07	-18.09	-5.53	1631168.34	14549319.83	40°03'43.277"N	105°01'58.993"W	4.27	
611.00	7.290	200.940	610.13	21.65	-21.68	-6.80	1631167.07	14549316.24	40°03'43.242"N	105°01'59.009"W	1.93	
643.00	7.470	197.860	641.86	25.52	-25.55	-8.17	1631165.70	14549312.37	40°03'43.203"N	105°01'59.027"W	1.36	
675.00	8.040	195.840	673.57	29.65	-29.69	-9.41	1631164.45	14549308.24	40°03'43.163"N	105°01'59.043"W	1.97	
707.00	8.440	196.540	705.24	34.05	-34.09	-10.69	1631163.17	14549303.84	40°03'43.119"N	105°01'59.060"W	1.29	
738.00	8.700	198.390	735.89	38.45	-38.50	-12.08	1631161.79	14549299.43	40°03'43.076"N	105°01'59.077"W	1.22	
770.00	9.050	199.880	767.51	43.10	-43.16	-13.70	1631160.17	14549294.77	40°03'43.029"N	105°01'59.098"W	1.31	
802.00	9.930	199.970	799.07	48.05	-48.12	-15.50	1631158.37	14549289.82	40°03'42.980"N	105°01'59.121"W	2.75	
834.00	10.940	195.140	830.54	53.57	-53.65	-17.23	1631156.63	14549284.29	40°03'42.926"N	105°01'59.144"W	4.17	
865.00	12.170	196.450	860.91	59.54	-59.62	-18.93	1631154.93	14549278.32	40°03'42.867"N	105°01'59.165"W	4.06	
897.00	12.610	196.540	892.17	66.11	-66.20	-20.88	1631152.98	14549271.74	40°03'42.802"N	105°01'59.191"W	1.38	
929.00	12.920	196.190	923.38	72.89	-72.99	-22.87	1631150.99	14549264.96	40°03'42.735"N	105°01'59.216"W	1.00	
961.00	13.180	197.240	954.55	79.80	-79.91	-24.95	1631148.91	14549258.05	40°03'42.666"N	105°01'59.243"W	1.10	
992.00	13.970	197.240	984.69	86.74	-86.86	-27.10	1631146.75	14549251.10	40°03'42.598"N	105°01'59.271"W	2.55	
1024.00	15.290	195.840	1015.65	94.48	-94.60	-29.40	1631144.45	14549243.36	40°03'42.521"N	105°01'59.300"W	4.27	
1056.00	16.260	196.280	1046.44	102.83	-102.96	-31.81	1631142.04	14549235.00	40°03'42.438"N	105°01'59.331"W	3.05	
1087.00	16.960	196.010	1076.15	111.33	-111.48	-34.27	1631139.58	14549226.49	40°03'42.354"N	105°01'59.363"W	2.27	
1119.00	17.010	196.890	1106.75	120.28	-120.44	-36.92	1631136.93	14549217.53	40°03'42.266"N	105°01'59.397"W	0.82	
1151.00	17.490	195.660	1137.31	129.38	-129.55	-39.58	1631134.27	14549208.43	40°03'42.176"N	105°01'59.431"W	1.88	
1183.00	17.970	195.660	1167.79	138.75	-138.93	-42.21	1631131.63	14549199.05	40°03'42.083"N	105°01'59.465"W	1.50	
1214.00	18.150	197.860	1197.27	147.94	-148.13	-44.98	1631128.86	14549189.85	40°03'41.992"N	105°01'59.500"W	2.28	
1246.00	18.460	198.650	1227.65	157.47	-157.68	-48.13	1631125.71	14549180.31	40°03'41.898"N	105°01'59.541"W	1.24	
1278.00	18.900	199.530	1257.96	167.14	-167.36	-51.48	1631122.35	14549170.64	40°03'41.802"N	105°01'59.584"W	1.63	
1310.00	19.030	197.070	1288.22	177.00	-177.23	-54.75	1631119.09	14549160.77	40°03'41.705"N	105°01'59.626"W	2.53	
1341.00	19.380	195.050	1317.50	186.78	-187.03	-57.56	1631116.27	14549150.97	40°03'41.608"N	105°01'59.662"W	2.42	
1373.00	20.000	196.630	1347.63	197.14	-197.40	-60.51	1631113.32	14549140.61	40°03'41.505"N	105°01'59.700"W	2.55	
1405.00	18.900	196.370	1377.80	207.34	-207.62	-63.54	1631110.29	14549130.40	40°03'41.404"N	105°01'59.739"W	3.45	
1436.00	17.890	194.870	1407.22	216.75	-217.04	-66.17	1631107.65	14549120.98	40°03'41.311"N	105°01'59.773"W	3.60	
1468.00	18.020	194.170	1437.66	226.29	-226.59	-68.65	1631105.17	14549111.44	40°03'41.217"N	105°01'59.805"W	0.79	

REFERENCE WELLPATH IDENTIFICATION			
Operator	KERR-MCGEE OIL & GAS ONSHORE LP (WA)	Slot	SLOT#09 PAPA JO 2-25 35C-17HZ(1405'FSL & 1204'FWL,SEC.08)
Area	COLORADO	Well	PAPA JO 2-25 35C-17HZ
Field	WELD COUNTY (UTM/TRUE NORTH)	Wellbore	PAPA JO 2-25 35C-17HZ AWB
Facility	SEC.08-T1N-R68W		

WELLPATH DATA (191 stations) † = interpolated/extrapolated station												
MD (ft)	Inclination (°)	Azimuth (°)	TVD (ft)	Vert Sect (ft)	North (ft)	East (ft)	Grid East (US ft)	Grid North (US ft)	Latitude	Longitude	DLS (°/100ft)	Comments
1531.00	18.720	194.520	1497.45	245.51	-245.82	-73.57	1631100.25	14549092.21	40°03'41.027°N	105°01'59.868°W	1.12	
1563.00	18.110	192.150	1527.81	255.33	-255.66	-75.90	1631097.91	14549082.38	40°03'40.930°N	105°01'59.898°W	3.02	
1595.00	18.330	189.330	1558.21	265.15	-265.48	-77.76	1631096.05	14549072.56	40°03'40.832°N	105°01'59.922°W	2.84	
1627.00	18.630	189.330	1588.56	275.15	-275.49	-79.41	1631094.40	14549062.56	40°03'40.734°N	105°01'59.943°W	0.94	
1658.00	18.760	191.620	1617.92	284.91	-285.26	-81.21	1631092.59	14549052.79	40°03'40.637°N	105°01'59.967°W	2.40	
1690.00	18.500	193.200	1648.24	294.88	-295.25	-83.41	1631090.39	14549042.82	40°03'40.538°N	105°01'59.995°W	1.77	
1722.00	18.190	194.430	1678.62	304.65	-305.03	-85.81	1631087.98	14549033.04	40°03'40.442°N	105°02'00.026°W	1.55	
1754.00	18.060	195.050	1709.03	314.27	-314.65	-88.35	1631085.45	14549023.42	40°03'40.347°N	105°02'00.058°W	0.73	
1785.00	17.890	194.780	1738.52	323.50	-323.90	-90.81	1631082.98	14549014.18	40°03'40.255°N	105°02'00.090°W	0.61	
1817.00	17.490	194.430	1769.00	332.90	-333.31	-93.26	1631080.53	14549004.77	40°03'40.162°N	105°02'00.121°W	1.29	
1843.00	17.620	195.400	1793.79	340.47	-340.88	-95.28	1631078.51	14548997.20	40°03'40.087°N	105°02'00.147°W	1.23	LAST SURFACE MWD+IFR1 SURVEY
1932.00	17.400	195.310	1878.67	366.26	-366.71	-102.37	1631071.41	14548971.39	40°03'39.832°N	105°02'00.239°W	0.25	FIRST BHGE MWD+IFR1+SC SURVEY
2022.00	17.970	193.830	1964.42	392.69	-393.17	-109.24	1631064.53	14548944.94	40°03'39.571°N	105°02'00.327°W	0.81	
2111.00	18.740	192.010	2048.89	419.98	-420.48	-115.50	1631058.27	14548917.64	40°03'39.301°N	105°02'00.407°W	1.08	
2201.00	17.470	189.410	2134.43	447.43	-447.95	-120.72	1631053.04	14548890.18	40°03'39.029°N	105°02'00.475°W	1.67	
2291.00	18.230	190.310	2220.10	474.59	-475.13	-125.45	1631048.31	14548863.02	40°03'38.761°N	105°02'00.535°W	0.90	
2380.00	18.820	191.840	2304.49	502.31	-502.88	-130.88	1631042.86	14548835.29	40°03'38.486°N	105°02'00.605°W	0.86	
2396.00†	18.665	191.408	2319.64	507.34	-507.91	-131.92	1631041.82	14548830.25	40°03'38.437°N	105°02'00.619°W	1.30	ENTER LANDBOX (897'FSL & 1072'FWL,SEC.08) 40.0606769 -105.0335052
2470.00	17.960	189.320	2389.89	530.19	-530.78	-136.11	1631037.63	14548807.40	40°03'38.211°N	105°02'00.672°W	1.30	
2559.00	15.950	191.790	2475.02	555.68	-556.29	-140.83	1631032.90	14548781.89	40°03'37.959°N	105°02'00.733°W	2.40	
2649.00	14.400	195.680	2561.88	578.54	-579.17	-146.38	1631027.34	14548759.02	40°03'37.732°N	105°02'00.805°W	2.06	
2738.00	14.240	194.870	2648.12	599.75	-600.41	-152.18	1631021.53	14548737.80	40°03'37.523°N	105°02'00.879°W	0.29	
2828.00	13.060	192.470	2735.57	620.36	-621.04	-157.22	1631016.49	14548717.18	40°03'37.319°N	105°02'00.944°W	1.45	
2918.00	11.930	198.870	2823.44	639.07	-639.77	-162.42	1631011.28	14548698.46	40°03'37.134°N	105°02'01.011°W	1.98	
3007.00	10.660	198.520	2910.72	655.55	-656.28	-168.01	1631005.69	14548681.96	40°03'36.970°N	105°02'01.083°W	1.43	
3097.00	9.440	200.110	2999.34	670.35	-671.10	-173.19	1631000.50	14548667.14	40°03'36.824°N	105°02'01.149°W	1.39	
3186.00	8.790	196.780	3087.21	683.70	-684.47	-177.67	1630996.03	14548653.78	40°03'36.692°N	105°02'01.207°W	0.94	
3276.00	7.010	188.100	3176.36	695.71	-696.49	-180.43	1630993.26	14548641.77	40°03'36.573°N	105°02'01.242°W	2.38	
3365.00	6.170	187.810	3264.77	705.82	-706.61	-181.84	1630991.85	14548631.66	40°03'36.473°N	105°02'01.261°W	0.94	
3455.00	4.150	193.270	3354.40	713.78	-714.57	-183.25	1630990.44	14548623.70	40°03'36.394°N	105°02'01.279°W	2.31	
3545.00	2.420	175.430	3444.25	718.84	-719.63	-183.84	1630989.84	14548618.64	40°03'36.344°N	105°02'01.286°W	2.21	
3634.00	1.430	195.400	3533.20	721.78	-722.58	-183.99	1630989.69	14548615.69	40°03'36.315°N	105°02'01.288°W	1.33	
3724.00	0.100	20.070	3623.19	722.79	-723.59	-184.26	1630989.42	14548614.68	40°03'36.305°N	105°02'01.292°W	1.70	
3813.00	0.220	223.750	3712.19	722.84	-723.64	-184.35	1630989.33	14548614.63	40°03'36.305°N	105°02'01.293°W	0.35	
3903.00	0.360	231.330	3802.19	723.14	-723.94	-184.69	1630988.99	14548614.33	40°03'36.302°N	105°02'01.297°W	0.16	
3992.00	0.330	276.740	3891.19	723.28	-724.08	-185.16	1630988.52	14548614.19	40°03'36.300°N	105°02'01.303°W	0.30	
4082.00	0.380	267.720	3981.19	723.26	-724.06	-185.72	1630987.96	14548614.21	40°03'36.301°N	105°02'01.311°W	0.08	
4171.00	0.770	223.520	4070.18	723.70	-724.51	-186.43	1630987.26	14548613.76	40°03'36.296°N	105°02'01.320°W	0.63	
4261.00	0.910	232.170	4160.17	724.57	-725.39	-187.41	1630986.28	14548612.89	40°03'36.288°N	105°02'01.332°W	0.21	
4350.00	0.990	228.770	4249.16	725.51	-726.33	-188.54	1630985.14	14548611.95	40°03'36.278°N	105°02'01.347°W	0.11	
4440.00	0.870	229.240	4339.15	726.46	-727.28	-189.65	1630984.04	14548610.99	40°03'36.269°N	105°02'01.361°W	0.13	
4530.00	1.840	43.350	4429.14	725.86	-726.68	-189.17	1630984.51	14548611.59	40°03'36.275°N	105°02'01.355°W	3.01	
4619.00	1.940	39.200	4518.09	723.66	-724.47	-187.24	1630986.44	14548613.80	40°03'36.297°N	105°02'01.330°W	0.19	
4708.00	1.570	40.080	4607.05	721.57	-722.37	-185.50	1630988.18	14548615.90	40°03'36.317°N	105°02'01.308°W	0.42	
4822.00	1.570	36.440	4721.00	719.13	-719.92	-183.57	1630990.12	14548618.35	40°03'36.342°N	105°02'01.283°W	0.09	

REFERENCE WELLPATH IDENTIFICATION			
Operator	KERR-MCGEE OIL & GAS ONSHORE LP (WA)	Slot	SLOT#09 PAPA JO 2-25 35C-17HZ(1405'FSL & 1204'FWL,SEC.08)
Area	COLORADO	Well	PAPA JO 2-25 35C-17HZ
Field	WELD COUNTY (UTM/TRUE NORTH)	Wellbore	PAPA JO 2-25 35C-17HZ AWB
Facility	SEC.08-T1N-R68W		

WELLPATH DATA (191 stations) † = interpolated/extrapolated station												
MD (ft)	Inclination (°)	Azimuth (°)	TVD (ft)	Vert Sect (ft)	North (ft)	East (ft)	Grid East (US ft)	Grid North (US ft)	Latitude	Longitude	DLS (°/100ft)	Comments
4912.00	1.550	33.620	4810.97	717.13	-717.92	-182.16	1630991.52	14548620.35	40°03'36.361"N	105°02'01.265"W	0.09	
5001.00	1.310	29.070	4899.94	715.24	-716.02	-181.00	1630992.68	14548622.24	40°03'36.380"N	105°02'01.250"W	0.30	
5090.00	0.840	11.210	4988.93	713.71	-714.50	-180.38	1630993.30	14548623.77	40°03'36.395"N	105°02'01.242"W	0.64	
5180.00	0.830	351.990	5078.92	712.42	-713.20	-180.34	1630993.34	14548625.06	40°03'36.408"N	105°02'01.241"W	0.31	
5269.00	0.830	335.120	5167.91	711.20	-711.98	-180.70	1630992.98	14548626.28	40°03'36.420"N	105°02'01.246"W	0.27	
5359.00	0.690	337.160	5257.90	710.10	-710.89	-181.19	1630992.50	14548627.37	40°03'36.431"N	105°02'01.252"W	0.16	
5448.00	0.880	300.280	5346.89	709.26	-710.05	-181.99	1630991.70	14548628.21	40°03'36.439"N	105°02'01.263"W	0.59	
5538.00	0.620	293.330	5436.89	708.72	-709.51	-183.03	1630990.66	14548628.75	40°03'36.444"N	105°02'01.276"W	0.31	
5627.00	0.740	292.940	5525.88	708.30	-709.09	-184.00	1630989.69	14548629.17	40°03'36.449"N	105°02'01.288"W	0.13	
5717.00	0.840	284.630	5615.87	707.90	-708.70	-185.18	1630988.51	14548629.56	40°03'36.452"N	105°02'01.304"W	0.17	
5806.00	0.770	266.960	5704.86	707.76	-708.57	-186.40	1630987.28	14548629.70	40°03'36.454"N	105°02'01.319"W	0.29	
5896.00	0.830	263.460	5794.85	707.86	-708.67	-187.66	1630986.03	14548629.59	40°03'36.453"N	105°02'01.335"W	0.09	
5985.00	1.180	255.200	5883.84	708.16	-708.98	-189.18	1630984.51	14548629.28	40°03'36.450"N	105°02'01.355"W	0.42	
6075.00	1.250	261.290	5973.82	708.54	-709.37	-191.05	1630982.64	14548628.90	40°03'36.446"N	105°02'01.379"W	0.16	
6164.00	1.640	260.240	6062.79	708.89	-709.73	-193.26	1630980.43	14548628.54	40°03'36.442"N	105°02'01.408"W	0.44	
6254.00	1.330	219.560	6152.76	709.91	-710.75	-195.20	1630978.49	14548627.51	40°03'36.432"N	105°02'01.432"W	1.19	
6343.00	0.520	233.140	6241.75	710.94	-711.79	-196.18	1630977.51	14548626.48	40°03'36.422"N	105°02'01.445"W	0.94	
6433.00	0.260	219.850	6331.75	711.34	-712.19	-196.64	1630977.06	14548626.08	40°03'36.418"N	105°02'01.451"W	0.30	
6522.00	0.280	152.870	6420.75	711.69	-712.54	-196.67	1630977.03	14548625.73	40°03'36.414"N	105°02'01.451"W	0.34	
6612.00	0.590	139.930	6510.75	712.24	-713.09	-196.27	1630977.42	14548625.18	40°03'36.409"N	105°02'01.446"W	0.36	
6701.00	0.700	133.600	6599.74	712.97	-713.82	-195.58	1630978.11	14548624.45	40°03'36.402"N	105°02'01.437"W	0.15	
6791.00	0.810	121.190	6689.73	713.69	-714.53	-194.64	1630979.05	14548623.74	40°03'36.395"N	105°02'01.425"W	0.22	
6880.00	0.600	131.300	6778.73	714.32	-715.16	-193.75	1630979.94	14548623.11	40°03'36.389"N	105°02'01.414"W	0.27	
6970.00	0.320	284.960	6868.72	714.57	-715.41	-193.64	1630980.05	14548622.86	40°03'36.386"N	105°02'01.412"W	1.00	
7059.00	0.790	120.350	6957.72	714.82	-715.65	-193.35	1630980.34	14548622.62	40°03'36.384"N	105°02'01.409"W	1.24	
7149.00	1.060	134.780	7047.71	715.72	-716.55	-192.22	1630981.47	14548621.72	40°03'36.375"N	105°02'01.394"W	0.39	
7151.00†	1.173	140.312	7049.71	715.75	-716.58	-192.20	1630981.49	14548621.69	40°03'36.375"N	105°02'01.394"W	7.79	KOP
7239.00	7.780	175.640	7137.40	722.39	-723.22	-191.17	1630982.52	14548615.05	40°03'36.309"N	105°02'01.381"W	7.79	
7328.00	13.950	180.870	7224.76	739.14	-739.97	-190.87	1630982.81	14548598.31	40°03'36.143"N	105°02'01.377"W	7.01	
7418.00	21.880	178.370	7310.33	766.80	-767.63	-190.56	1630983.11	14548570.66	40°03'35.870"N	105°02'01.373"W	8.85	
7508.00	27.780	182.180	7391.98	804.56	-805.38	-190.88	1630982.78	14548532.92	40°03'35.497"N	105°02'01.377"W	6.79	
7597.00	36.510	179.350	7467.27	851.85	-852.68	-191.37	1630982.27	14548485.65	40°03'35.030"N	105°02'01.383"W	9.95	
7686.00	41.910	178.170	7536.21	908.08	-908.90	-190.12	1630983.50	14548429.44	40°03'34.474"N	105°02'01.367"W	6.12	
7776.00	46.790	178.830	7600.55	970.96	-971.78	-188.49	1630985.10	14548366.60	40°03'33.853"N	105°02'01.346"W	5.45	
7865.00	51.950	179.020	7658.48	1038.47	-1039.29	-187.23	1630986.34	14548299.11	40°03'33.186"N	105°02'01.330"W	5.80	
7955.00	58.170	179.920	7710.00	1112.21	-1113.02	-186.57	1630986.97	14548225.40	40°03'32.457"N	105°02'01.321"W	6.96	
8045.00	64.380	179.100	7753.23	1191.10	-1191.90	-185.87	1630987.64	14548146.55	40°03'31.677"N	105°02'01.312"W	6.95	
8134.00	68.950	179.600	7788.48	1272.79	-1273.60	-184.95	1630988.53	14548064.89	40°03'30.870"N	105°02'01.301"W	5.16	
8224.00	73.200	180.030	7817.66	1357.91	-1358.71	-184.68	1630988.76	14547979.81	40°03'30.029"N	105°02'01.297"W	4.74	
8313.00	82.530	181.790	7836.35	1444.80	-1445.61	-186.09	1630987.33	14547892.95	40°03'29.170"N	105°02'01.315"W	10.66	
8403.00	91.910	180.360	7840.71	1534.57	-1535.39	-187.77	1630985.62	14547803.21	40°03'28.283"N	105°02'01.337"W	10.54	LANDING (130'FNL & 1016'FWL,SEC.17) 40.0578564 -105.0337047
8493.00	90.220	180.550	7839.04	1624.54	-1625.37	-188.48	1630984.87	14547713.27	40°03'27.394"N	105°02'01.346"W	1.89	
8534.00†	89.423	180.707	7839.17	1665.54	-1666.36	-188.93	1630984.40	14547672.29	40°03'26.989"N	105°02'01.352"W	1.98	EXIT RADIUS HEEL (261'FNL & 1015'FWL,SEC.17) 40.0574968 -105.0337088
8582.00	88.490	180.890	7840.04	1713.52	-1714.35	-189.60	1630983.72	14547624.32	40°03'26.514"N	105°02'01.360"W	1.98	
8671.00	88.980	180.520	7842.01	1802.49	-1803.32	-190.69	1630982.59	14547535.39	40°03'25.635"N	105°02'01.374"W	0.69	

REFERENCE WELLPATH IDENTIFICATION

Operator	KERR-MCGEE OIL & GAS ONSHORE LP (WA)	Slot	SLOT#09 PAPA JO 2-25 35C-17HZ(1405'FSL & 1204'FWL,SEC.08)
Area	COLORADO	Well	PAPA JO 2-25 35C-17HZ
Field	WELD COUNTY (UTM/TRUE NORTH)	Wellbore	PAPA JO 2-25 35C-17HZ AWB
Facility	SEC.08-T1N-R68W		

WELLPATH DATA (191 stations)

MD [ft]	Inclination [°]	Azimuth [°]	TVD [ft]	Vert Sect [ft]	North [ft]	East [ft]	Grid East [US ft]	Grid North [US ft]	Latitude	Longitude	DLS [°/100ft]	Comments
8761.00	88.650	180.030	7843.87	1892.46	-1893.30	-191.13	1630982.13	14547445.44	40°03'24.746"N	105°02'01.380"W	0.66	
8851.00	89.080	179.730	7845.65	1982.44	-1983.28	-190.94	1630982.28	14547355.50	40°03'23.857"N	105°02'01.378"W	0.58	
8940.00	89.780	179.810	7846.54	2071.44	-2072.28	-190.58	1630982.60	14547266.54	40°03'22.977"N	105°02'01.373"W	0.79	
9030.00	90.370	179.210	7846.42	2161.44	-2162.27	-189.81	1630983.34	14547176.58	40°03'22.088"N	105°02'01.363"W	0.93	
9119.00	89.510	180.010	7846.51	2250.44	-2251.27	-189.20	1630983.91	14547087.62	40°03'21.208"N	105°02'01.355"W	1.32	
9209.00	89.970	179.710	7846.92	2340.43	-2341.27	-188.98	1630984.10	14546997.65	40°03'20.319"N	105°02'01.352"W	0.61	
9298.00	88.210	179.780	7848.33	2429.42	-2430.25	-188.59	1630984.46	14546908.71	40°03'19.440"N	105°02'01.347"W	1.98	
9388.00	88.670	179.880	7850.78	2519.39	-2520.22	-188.32	1630984.70	14546818.78	40°03'18.551"N	105°02'01.344"W	0.52	
9477.00	89.350	179.740	7852.32	2608.37	-2609.20	-188.03	1630984.96	14546729.83	40°03'17.671"N	105°02'01.340"W	0.78	
9567.00	90.120	179.600	7852.74	2698.37	-2699.20	-187.51	1630985.44	14546639.87	40°03'16.782"N	105°02'01.333"W	0.87	
9656.00	90.650	179.560	7852.14	2787.37	-2788.20	-186.86	1630986.06	14546550.91	40°03'15.902"N	105°02'01.325"W	0.60	
9746.00	88.950	179.950	7852.45	2877.36	-2878.19	-186.47	1630986.41	14546460.95	40°03'15.013"N	105°02'01.320"W	1.94	
9836.00	89.720	179.920	7853.50	2967.36	-2968.18	-186.37	1630986.48	14546370.99	40°03'14.124"N	105°02'01.319"W	0.86	
9925.00	91.080	180.540	7852.88	3056.35	-3057.18	-186.73	1630986.09	14546282.03	40°03'13.244"N	105°02'01.323"W	1.68	
10015.00	88.490	180.260	7853.21	3146.33	-3147.17	-187.35	1630985.43	14546192.08	40°03'12.355"N	105°02'01.331"W	2.89	
10104.00	88.430	178.980	7855.61	3235.30	-3236.13	-186.76	1630985.99	14546103.15	40°03'11.476"N	105°02'01.324"W	1.44	
10194.00	89.260	178.820	7857.42	3325.27	-3326.10	-185.04	1630987.68	14546013.22	40°03'10.587"N	105°02'01.301"W	0.94	
10284.00	90.220	178.730	7857.83	3415.26	-3416.07	-183.11	1630989.57	14545923.28	40°03'09.698"N	105°02'01.277"W	1.07	
10373.00	90.770	177.830	7857.06	3504.22	-3505.03	-180.44	1630992.21	14545834.36	40°03'08.819"N	105°02'01.242"W	1.19	
10463.00	89.320	177.340	7856.99	3594.15	-3594.95	-176.65	1630995.96	14545744.48	40°03'07.930"N	105°02'01.194"W	1.70	
10552.00	89.630	178.860	7857.80	3683.11	-3683.89	-173.70	1630998.88	14545655.57	40°03'07.051"N	105°02'01.156"W	1.74	
10642.00	89.010	178.850	7858.87	3773.09	-3773.87	-171.90	1631000.65	14545565.63	40°03'06.162"N	105°02'01.133"W	0.69	
10731.00	89.750	178.140	7859.84	3862.07	-3862.83	-169.56	1631002.95	14545476.70	40°03'05.283"N	105°02'01.102"W	1.15	
10821.00	89.690	179.530	7860.27	3952.05	-3952.81	-167.73	1631004.74	14545386.75	40°03'04.393"N	105°02'01.079"W	1.55	
10910.00	89.880	179.100	7860.61	4041.05	-4041.80	-166.67	1631005.78	14545297.80	40°03'03.514"N	105°02'01.065"W	0.53	
11000.00	88.950	178.100	7861.53	4131.02	-4131.77	-164.47	1631007.94	14545207.87	40°03'02.625"N	105°02'01.037"W	1.52	
11090.00	90.920	179.980	7861.63	4221.01	-4221.75	-162.96	1631009.41	14545117.92	40°03'01.736"N	105°02'01.018"W	3.03	
11179.00	90.370	178.750	7860.63	4310.00	-4310.73	-161.98	1631010.37	14545028.97	40°03'00.856"N	105°02'01.005"W	1.51	
11269.00	90.740	179.090	7859.76	4399.98	-4400.71	-160.28	1631012.03	14544939.03	40°02'59.967"N	105°02'00.983"W	0.56	
11358.00	91.230	178.970	7858.23	4488.96	-4489.69	-158.77	1631013.50	14544850.09	40°02'59.088"N	105°02'00.964"W	0.57	
11448.00	90.860	180.410	7856.58	4578.94	-4579.67	-158.29	1631013.95	14544760.14	40°02'58.199"N	105°02'00.957"W	1.65	
11537.00	91.570	179.770	7854.70	4667.92	-4668.65	-158.43	1631013.78	14544671.20	40°02'57.319"N	105°02'00.959"W	1.07	
11627.00	89.910	180.000	7853.54	4757.91	-4758.63	-158.25	1631013.93	14544581.25	40°02'56.430"N	105°02'00.957"W	1.86	
11717.00	90.120	179.640	7853.51	4847.91	-4848.63	-157.96	1631014.18	14544491.28	40°02'55.541"N	105°02'00.953"W	0.46	
11806.00	90.220	179.430	7853.25	4936.91	-4937.63	-157.24	1631014.87	14544402.32	40°02'54.661"N	105°02'00.944"W	0.26	
11896.00	90.180	179.180	7852.93	5026.91	-5027.62	-156.15	1631015.92	14544312.37	40°02'53.772"N	105°02'00.930"W	0.28	
11986.00	90.370	178.490	7852.50	5116.89	-5117.60	-154.32	1631017.72	14544222.42	40°02'52.883"N	105°02'00.906"W	0.80	
12075.00	89.170	180.420	7852.86	5205.89	-5206.59	-153.47	1631018.53	14544133.47	40°02'52.003"N	105°02'00.895"W	2.55	
12165.00	89.630	179.350	7853.80	5295.88	-5296.59	-153.29	1631018.68	14544043.51	40°02'51.114"N	105°02'00.893"W	1.29	
12254.00	89.600	178.650	7854.40	5384.87	-5385.57	-151.74	1631020.20	14543954.56	40°02'50.235"N	105°02'00.873"W	0.79	
12344.00	89.940	180.900	7854.76	5474.86	-5475.56	-151.39	1631020.52	14543864.61	40°02'49.345"N	105°02'00.869"W	2.53	
12434.00	90.590	180.940	7854.34	5564.84	-5565.55	-152.83	1631019.04	14543774.66	40°02'48.456"N	105°02'00.887"W	0.72	
12523.00	91.200	180.510	7852.95	5653.82	-5654.53	-153.96	1631017.88	14543685.71	40°02'47.577"N	105°02'00.902"W	0.84	
12613.00	91.600	180.100	7850.76	5743.79	-5744.50	-154.44	1631017.37	14543595.78	40°02'46.688"N	105°02'00.908"W	0.64	
12702.00	92.530	179.860	7847.55	5832.73	-5833.44	-154.40	1631017.37	14543506.87	40°02'45.809"N	105°02'00.907"W	1.08	

REFERENCE WELLPATH IDENTIFICATION			
Operator	KERR-MCGEE OIL & GAS ONSHORE LP (WA)	Slot	SLOT#09 PAPA JO 2-25 35C-17HZ(1405'FSL & 1204'FWL,SEC.08)
Area	COLORADO	Well	PAPA JO 2-25 35C-17HZ
Field	WELD COUNTY (UTM/TRUE NORTH)	Wellbore	PAPA JO 2-25 35C-17HZ AWB
Facility	SEC.08-T1N-R68W		

WELLPATH DATA (191 stations) † = interpolated/extrapolated station												
MD (ft)	Inclination (°)	Azimuth (°)	TVD (ft)	Vert Sect (ft)	North (ft)	East (ft)	Grid East (US ft)	Grid North (US ft)	Latitude	Longitude	DLS (°/100ft)	Comments
12792.00	89.260	179.980	7846.14	5922.70	-5923.42	-154.28	1631017.46	14543416.93	40°02'44.919"N	105°02'00.906"W	3.64	
12881.00	89.820	180.010	7846.86	6011.70	-6012.42	-154.27	1631017.44	14543327.97	40°02'44.040"N	105°02'00.906"W	0.63	
12971.00	90.650	179.870	7846.49	6101.70	-6102.42	-154.18	1631017.50	14543238.01	40°02'43.151"N	105°02'00.904"W	0.94	
13060.00	89.970	178.660	7846.01	6190.69	-6191.40	-153.04	1631018.61	14543149.05	40°02'42.271"N	105°02'00.890"W	1.56	
13150.00	90.620	178.680	7845.54	6280.67	-6281.38	-150.95	1631020.66	14543059.11	40°02'41.382"N	105°02'00.863"W	0.72	
13230.00†	90.953	177.952	7844.45	6360.64	-6361.34	-148.60	1631022.98	14542979.19	40°02'40.592"N	105°02'00.833"W	1.00	ENTER RADIUS TOE (325'FSL & 994'FWL, SEC.17) 40.0446088 -105.0335646
13239.00	90.990	177.870	7844.29	6369.63	-6370.33	-148.27	1631023.31	14542970.20	40°02'40.503"N	105°02'00.828"W	1.00	
13329.00	91.480	177.220	7842.35	6459.54	-6460.22	-144.41	1631027.12	14542880.34	40°02'39.615"N	105°02'00.779"W	0.90	
13418.00	92.120	176.750	7839.56	6548.40	-6549.06	-139.74	1631031.77	14542791.54	40°02'38.737"N	105°02'00.719"W	0.89	
13457.00	92.370	176.990	7838.03	6587.32	-6587.97	-137.61	1631033.88	14542752.64	40°02'38.352"N	105°02'00.691"W	0.89	LAST BHGE MWD+IFR1+SC SURVEY
13504.00	92.370	176.990	7836.09	6634.22	-6634.86	-135.14	1631036.33	14542705.76	40°02'37.889"N	105°02'00.660"W	0.00	PTB (51'FSL & 1008'FWL, SEC.17) 40.0438580 -105.0335166

TARGETS								
Name	TVD (ft)	North (ft)	East (ft)	Grid East (US ft)	Grid North (US ft)	Latitude	Longitude	Shape
SEC.08-T1N-R68W	-2.00	0.00	0.00	1631173.88	14549337.91	40°03'43.456"N	105°01'58.922"W	polygon
SEC.17-T1N-R68W	-2.00	0.00	0.00	1631173.88	14549337.91	40°03'43.456"N	105°01'58.922"W	polygon
PAPA JO 2-25 35C-17HZ HEEL REV-1(50'FNL & 956'FWL,SEC.17)	7833.00	-1457.57	-180.58	1630992.83	14547881.00	40°03'29.052"N	105°02'01.244"W	point
PAPA JO 2-25 35C-17HZ BHL REV-1(50'FSL & 965'FWL,SEC.17)	7855.00	-6635.59	-178.38	1630993.11	14542705.06	40°02'37.882"N	105°02'01.216"W	point
PAPA JO 2-25 35C-17HZ BHL REV-2(50'FSL & 985'FWL,SEC.17)	7855.00	-6635.59	-158.38	1631013.10	14542705.05	40°02'37.882"N	105°02'00.958"W	point
PAPA JO 2-25 35C-17HZ LANDBOX	7855.00	0.00	0.00	1631173.88	14549337.91	40°03'43.456"N	105°01'58.922"W	polygon
PAPA JO 2-25 35C-17HZ RADIUS 1	7855.00	-6680.13	180.27	1631351.60	14542660.40	40°02'37.441"N	105°01'56.604"W	polygon
PAPA JO 2-25 35C-17HZ RADIUS 2	7855.00	-1403.41	187.52	1631360.80	14547935.00	40°03'29.587"N	105°01'56.510"W	polygon

WELLPATH COMPOSITION - Ref Wellbore: PAPA JO 2-25 35C-17HZ AWP					Ref Wellpath: PAPA JO 2-25 35C-17HZ AWP		
Start MD (ft)	End MD (ft)	Positional Uncertainty Model			Log Name/Comment		Wellbore
26.00	1843.00	Custom APC ISCWSA REV 2 MWD+IFR1 (approximation)			Custom APC ISCWSA Rev-2 MWD+IFR1 <137 - 1843>		PAPA JO 2-25 35C-17HZ AWP
1843.00	13457.00	Custom APC ISCWSA REV 2 MWD+IFR1+SC (approximation)			BHGE Custom APC ISCWSA Rev-2 MWD+IFR1+SC <1932 - 13457>		PAPA JO 2-25 35C-17HZ AWP
13457.00	13504.00	Blind Drilling (std)			Projection to bit		PAPA JO 2-25 35C-17HZ AWP

REFERENCE WELLPATH IDENTIFICATION			
Operator	KERR-MCGEE OIL & GAS ONSHORE LP (WA)	Slot	SLOT#09 PAPA JO 2-25 35C-17HZ(1405'FSL & 1204'FWL,SEC.08)
Area	COLORADO	Well	PAPA JO 2-25 35C-17HZ
Field	WELD COUNTY (UTM/TRUE NORTH)	Wellbore	PAPA JO 2-25 35C-17HZ AWP
Facility	SEC.08-T1N-R68W		

WELLPATH COMMENTS				
MD [ft]	Inclination [°]	Azimuth [°]	TVD [ft]	Comment
137.00	0.880	92.300	137.00	FIRST SURFACE MWD+IFR1 SURVEY
1843.00	17.620	195.400	1793.79	LAST SURFACE MWD+IFR1 SURVEY
1932.00	17.400	195.310	1878.67	FIRST BHGE MWD+IFR1+SC SURVEY
2396.00	18.665	191.408	2319.64	ENTER LANDBOX (897'FSL & 1072'FWL,SEC.08) 40.0606769 -105.0335052
7151.00	1.173	140.312	7049.71	KOP
8403.00	91.910	180.360	7840.71	LANDING (130'FNL & 1016'FWL,SEC.17) 40.0578564 -105.0337047
8534.00	89.423	180.707	7839.17	EXIT RADIUS HEEL (261'FNL & 1015'FWL,SEC.17) 40.0574968 -105.0337088
13230.00	90.953	177.952	7844.45	ENTER RADIUS TOE (325'FSL & 994'FWL,SEC.17) 40.0446088 -105.0335646
13457.00	92.370	176.990	7838.03	LAST BHGE MWD+IFR1+SC SURVEY
13504.00	92.370	176.990	7836.09	PTB (51'FSL & 1008'FWL,SEC.17) 40.0438580 -105.0335166