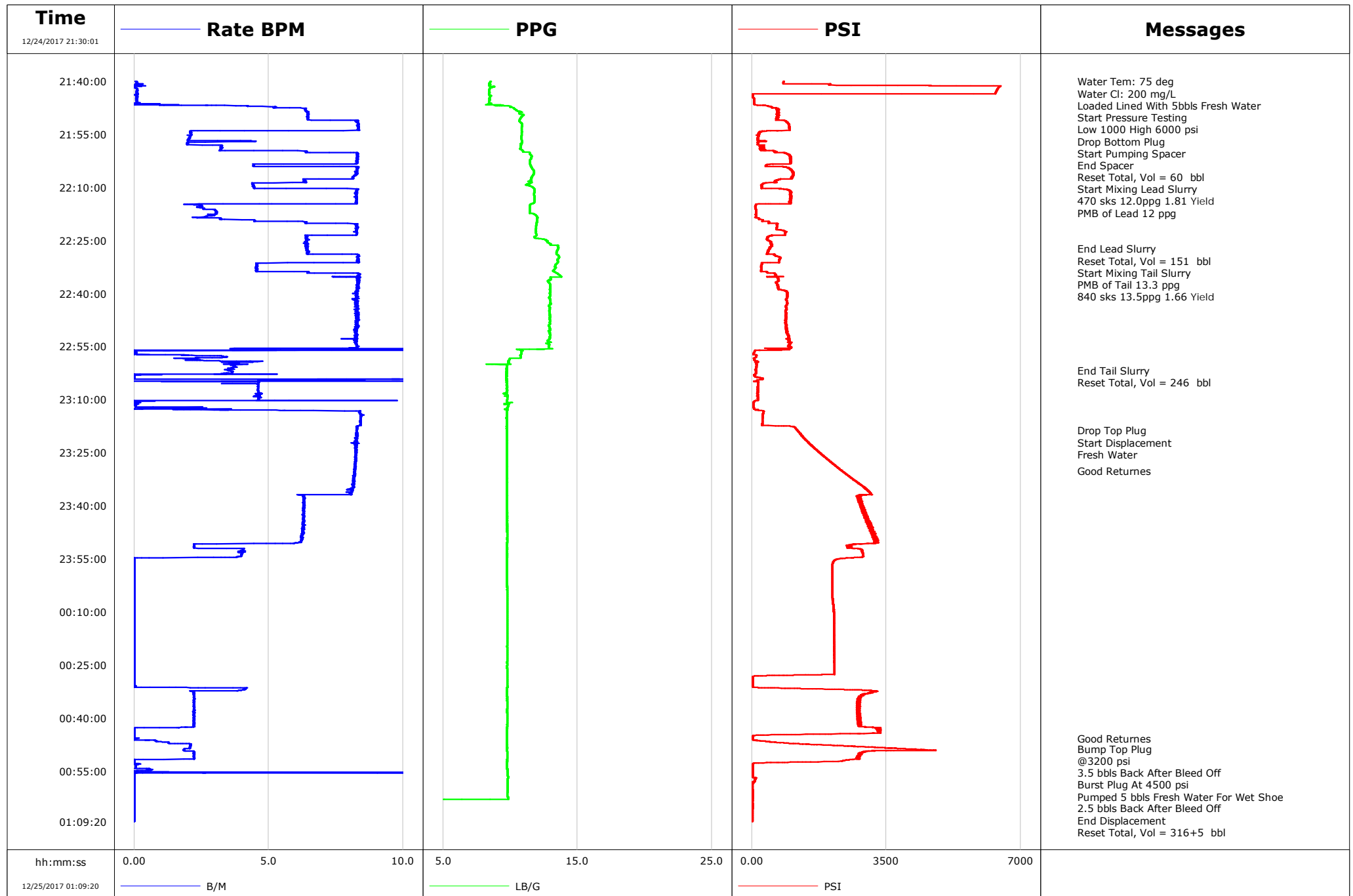


Well PAPA JO 2-2529N-8HZ
Field Wattenberg
Engineer Reema Alashgar
Country United States

Client ANADARKO
SIR No. CSS9-00914
Job Type 5.5" Production
Job Date 12-25-2017



Cementing Service Report

				Customer ANADARKO			Job Number CSS9-00914				
Well PAPA JO 2-2529N-8HZ PAPA JO 2-2529N-8HZ			Location (legal)			Schlumberger Location			Job Start Dec/25/2017		
Field Wattenberg		Formation Name/Type		Deviation deg		Bit Size 7.9 in		Well MD 13635.0 ft		Well TVD 13635.0 ft	
County		State/Province Colorado		BHP psi		BHST 230 degF		BHCT 218 degF		Pore Press. Gradient lb/gal	
Well Master 631736896		API/UWI									
Rig Name PRECISION #564		Drilled For Gas		Service Via Land		Casing/ Liner					
						Depth, ft		Size, in		Weight, lb/ft	
										Grade	
										Thread	
Offshore Zone		Well Class New		Well Type Development		13618.0		5.5		17.0	
						0.0		0.0		0.0	
Drilling Fluid Type		Max. Density lb/gal		Plastic Viscosity cP		Tubing/Drill Pipe					
						T/D		Depth, ft		Size, in	
										Weight, lb/ft	
										Grade	
										Thread	
Service Line Cementing		Job Type 5.5" Production									
Max. Allowed Tub. Press psi		Max. Allowed Ann. Press psi		WH Connection Double Cement head		Perforations/Open Hole					
						Top, ft		Bottom, ft		shot/ft	
										No. of Shots	
										Total Interval ft	
										Diameter in	
						Treat Down Casing		Displacement 316.0 bbl		Packer Type	
										Packer Depth ft	
						Tubing Vol. bbl		Casing Vol. 396.5 bbl		Annular Vol. bbl	
										Openhole Vol. bbl	
Casing/Tubing Secured <input type="checkbox"/>		1 Hole Vol. Circulated prior to Cement <input checked="" type="checkbox"/>				Casing Tools			Squeeze Job		
Lift Pressure psi						Shoe Type Guide			Squeeze Type		
Pipe Rotated <input type="checkbox"/>		Pipe Reciprocated <input type="checkbox"/>				Shoe Depth 13618.0 ft			Tool Type		
No. Centralizers		Top Plugs 1		Bottom Plugs 2		Stage Tool Type			Tool Depth ft		
Cement Head Type Double						Stage Tool Depth ft			Tail Pipe Size in		
Job Scheduled For Dec/25/2017		Arrived on Location Dec/25/2017		Leave Location Dec/25/2017		Collar Type			Tail Pipe Depth ft		
						Collar Depth ft			Sqz. Total Vol. bbl		
Date	Time 24-hr clock	Treating Pressure PSI	Flow Rate B/M	Density LB/G	Volume BBL	Message					
12/24/2017	21:30:01	0	0.0	8.36	0.0						
12/24/2017	21:30:31	-1	0.1	8.36	0.1						
12/24/2017	21:31:01	-3	0.2	8.39	0.1						
12/24/2017	21:35:31	153	1.5	8.59	1.1						
12/24/2017	21:36:01	138	1.4	9.16	1.8						
12/24/2017	21:36:31	116	1.4	21.79	4.0						
12/24/2017	21:37:01	57	0.0	0.00	5.3						
12/24/2017	21:37:31	58	0.0	10.41	5.5						
12/24/2017	21:38:01	56	0.0	9.25	5.5						
12/24/2017	21:38:31	120	0.0	8.86	5.5						
12/24/2017	21:39:01	117	0.1	8.62	5.5						
12/24/2017	21:39:31	117	0.1	8.50	5.6						
12/24/2017	21:40:00	836	0.0	8.57	5.6	Water Tem: 75 deg					
12/24/2017	21:40:01	835	0.1	8.56	5.6						
12/24/2017	21:40:31	822	0.1	8.44	5.7						
12/24/2017	21:41:00	2008	0.1	8.50	5.7	Start Pressure Testing					
12/24/2017	21:41:01	2005	0.2	8.49	5.7						
12/24/2017	21:41:31	6453	0.0	8.80	5.8						
12/24/2017	21:42:01	6406	0.1	8.49	5.8						
12/24/2017	21:42:31	6378	0.1	8.45	5.9						
12/24/2017	21:43:00	6358	0.1	8.45	5.9	Low 1000 High 6000 psi					

Well			Field	Job Start		Customer	Job Number
PAPA JO 2-2529N-8HZ PAPA JO 2-2529N-8HZ			Wattenberg	Dec/25/2017		ANADARKO	CSS9-00914
Date	Time 24-hr clock	Treating Pressure PSI	Flow Rate B/M	Density LB/G	Volume BBL	Message	
12/24/2017	21:43:31	6334	0.1	8.43	6.0		
12/24/2017	21:44:01	28	0.1	8.53	6.0		
12/24/2017	21:44:31	29	0.1	8.48	6.1		
12/24/2017	21:45:01	58	0.1	8.44	6.1		
12/24/2017	21:45:31	58	0.1	8.46	6.2		
12/24/2017	21:46:01	59	0.1	8.44	6.2		
12/24/2017	21:46:31	66	0.5	8.34	6.3		
12/24/2017	21:46:50	285	2.7	9.08	6.5	Drop Bottom Plug	
12/24/2017	21:47:00	411	4.2	9.80	7.2	Start Pumping Spacer	
12/24/2017	21:47:01	421	4.2	9.84	7.2		
12/24/2017	21:47:31	542	5.2	10.23	9.7		
12/24/2017	21:48:01	668	6.4	10.39	12.8		
12/24/2017	21:48:31	700	6.4	10.62	16.0		
12/24/2017	21:49:01	704	6.5	10.67	19.2		
12/24/2017	21:50:01	686	6.5	10.85	25.7		
12/24/2017	21:50:31	659	6.5	10.76	28.9		
12/24/2017	21:51:01	818	8.1	10.70	32.2		
12/24/2017	21:51:31	907	8.3	10.72	36.3		
12/24/2017	21:52:01	951	8.4	10.87	40.5		
12/24/2017	21:52:31	970	8.3	10.89	44.6		
12/24/2017	21:53:01	982	8.4	10.85	48.8		
12/24/2017	21:53:31	985	8.3	10.85	53.0		
12/24/2017	21:54:01	487	3.2	10.85	56.9		
12/24/2017	21:54:31	214	2.1	10.85	58.0		
12/24/2017	21:55:01	194	2.1	10.86	59.0		
12/24/2017	21:55:31	185	2.1	10.83	60.1		
12/24/2017	21:56:01	177	2.1	10.81	61.1		
12/24/2017	21:56:31	160	2.0	10.84	62.1		
12/24/2017	21:57:01	368	4.5	10.87	63.5		
12/24/2017	21:57:31	157	2.0	10.86	64.9		
12/24/2017	21:58:01	161	2.0	10.81	65.9		
12/24/2017	21:58:31	245	3.2	10.76	67.5		
12/24/2017	21:59:01	214	3.3	10.75	69.1		
12/24/2017	21:59:31	222	3.2	10.89	70.7		
12/24/2017	22:00:00	600	6.4	10.96	73.3	End Spacer	
12/24/2017	22:00:01	586	6.4	10.96	73.4		
12/24/2017	22:00:05	621	6.4	10.97	73.9	Reset Total, Vol = 60 bbl	
12/24/2017	22:00:10	623	6.4	11.45	74.4	Start Mixing Lead Slurry	
12/24/2017	22:00:31	935	8.3	11.43	77.2		
12/24/2017	22:01:01	1013	8.3	11.56	81.4		
12/24/2017	22:01:31	1014	8.3	11.57	85.5		
12/24/2017	22:02:01	1035	8.3	11.53	89.7		
12/24/2017	22:02:31	1025	8.3	11.48	93.8		
12/24/2017	22:03:01	1014	8.3	11.48	98.0		
12/24/2017	22:03:31	459	4.4	11.47	101.7		
12/24/2017	22:04:01	381	4.4	11.53	103.9		
12/24/2017	22:04:31	940	8.3	11.61	107.6		
12/24/2017	22:05:00	1026	8.3	11.69	111.6	PMB of Lead 12 ppg	
12/24/2017	22:05:01	1003	8.3	11.70	111.7		
12/24/2017	22:05:31	1041	8.3	11.76	115.9		
12/24/2017	22:06:01	1062	8.2	11.76	120.0		
12/24/2017	22:06:31	1067	8.2	11.71	124.1		
12/24/2017	22:07:01	1035	8.1	11.61	128.2		
12/24/2017	22:07:31	1036	8.1	11.55	132.3		

Well			Field	Job Start		Customer	Job Number
PAPA JO 2-2529N-8HZ PAPA JO 2-2529N-8HZ			Wattenberg	Dec/25/2017		ANADARKO	CSS9-00914
Date	Time 24-hr clock	Treating Pressure PSI	Flow Rate B/M	Density LB/G	Volume BBL	Message	
12/24/2017	22:08:31	623	6.4	11.59	138.9		
12/24/2017	22:09:01	300	4.4	11.32	141.5		
12/24/2017	22:09:31	261	4.4	11.35	143.7		
12/24/2017	22:10:01	262	4.5	11.68	146.0		
12/24/2017	22:10:31	814	8.3	11.80	148.7		
12/24/2017	22:11:01	1009	8.3	11.82	152.9		
12/24/2017	22:11:31	1016	8.2	11.79	157.0		
12/24/2017	22:12:01	1020	8.3	11.77	161.1		
12/24/2017	22:12:31	1029	8.3	11.80	165.3		
12/24/2017	22:13:01	1006	8.2	11.81	169.4		
12/24/2017	22:13:31	1007	8.3	11.80	173.5		
12/24/2017	22:14:01	1009	8.2	11.81	177.6		
12/24/2017	22:14:31	989	8.3	11.72	181.8		
12/24/2017	22:15:01	106	2.4	11.46	184.1		
12/24/2017	22:15:31	96	2.5	11.44	185.3		
12/24/2017	22:16:01	92	2.6	11.43	186.6		
12/24/2017	22:16:31	109	3.0	11.44	188.0		
12/24/2017	22:17:01	110	3.1	11.44	189.5		
12/24/2017	22:17:31	110	3.1	11.74	191.1		
12/24/2017	22:18:01	109	2.9	11.93	192.5		
12/24/2017	22:18:31	102	2.2	11.99	193.9		
12/24/2017	22:19:01	189	3.2	12.01	195.3		
12/24/2017	22:19:31	279	4.5	11.99	197.4		
12/24/2017	22:20:01	453	6.4	11.97	200.4		
12/24/2017	22:20:31	661	8.2	11.95	204.1		
12/24/2017	22:21:01	649	8.3	11.93	208.2		
12/24/2017	22:21:31	647	8.3	11.92	212.4		
12/24/2017	22:22:01	749	8.3	11.89	216.5		
12/24/2017	22:22:31	865	8.3	11.91	220.6		
12/24/2017	22:23:01	885	8.3	11.92	224.8		
12/24/2017	22:23:31	879	8.3	11.95	228.9		
12/24/2017	22:24:00	413	6.4	11.78	232.1	End Lead Slurry	
12/24/2017	22:24:01	423	6.4	11.78	232.2		
12/24/2017	22:24:10	400	6.4	11.80	233.1	Reset Total, Vol = 151 bbl	
12/24/2017	22:24:31	389	6.4	12.15	235.4		
12/24/2017	22:25:01	437	6.5	12.68	238.6		
12/24/2017	22:25:31	489	6.4	12.78	241.8		
12/24/2017	22:26:00	484	6.5	12.98	244.9	Start Mixing Tail Slurry	
12/24/2017	22:26:01	487	6.5	13.00	245.0		
12/24/2017	22:26:31	505	6.4	13.51	248.2		
12/24/2017	22:27:01	480	6.4	13.56	251.4		
12/24/2017	22:27:31	450	6.4	13.54	254.6		
12/24/2017	22:28:00	444	6.4	13.48	257.7	PMB of Tail 13.3 ppg	
12/24/2017	22:28:01	431	6.4	13.48	257.8		
12/24/2017	22:28:31	412	6.4	13.44	261.1		
12/24/2017	22:29:01	590	8.3	13.48	264.5		
12/24/2017	22:29:31	663	8.4	13.58	268.6		
12/24/2017	22:30:01	749	8.3	13.61	272.8		
12/24/2017	22:30:31	713	8.3	13.51	276.9		
12/24/2017	22:31:01	715	8.3	13.53	281.1		
12/24/2017	22:31:31	257	4.5	13.48	284.7		
12/24/2017	22:32:01	251	4.6	13.36	286.9		
12/24/2017	22:32:31	247	4.6	13.31	289.2		
12/24/2017	22:33:01	246	4.6	13.32	291.5		

Well			Field	Job Start		Customer	Job Number
PAPA JO 2-2529N-8HZ PAPA JO 2-2529N-8HZ			Wattenberg	Dec/25/2017		ANADARKO	CSS9-00914
Date	Time 24-hr clock	Treating Pressure PSI	Flow Rate B/M	Density LB/G	Volume BBL	Message	
12/24/2017	22:34:01	391	6.5	13.34	296.4		
12/24/2017	22:34:31	621	8.3	13.55	300.1		
12/24/2017	22:35:01	645	8.3	13.70	304.3		
12/24/2017	22:35:31	680	8.3	12.99	308.4		
12/24/2017	22:36:01	706	8.3	13.04	312.6		
12/24/2017	22:36:31	682	8.3	12.81	316.7		
12/24/2017	22:37:01	640	8.3	12.89	320.9		
12/24/2017	22:37:31	661	8.3	12.97	325.1		
12/24/2017	22:38:01	684	8.3	12.96	329.2		
12/24/2017	22:38:31	673	8.3	12.96	333.4		
12/24/2017	22:39:31	910	8.3	12.98	341.7		
12/24/2017	22:40:01	930	8.1	12.96	345.8		
12/24/2017	22:40:31	923	8.3	12.98	349.9		
12/24/2017	22:41:01	948	8.3	12.90	354.1		
12/24/2017	22:41:31	925	8.2	12.92	358.2		
12/24/2017	22:42:01	920	8.3	12.97	362.3		
12/24/2017	22:42:31	930	8.3	12.99	366.4		
12/24/2017	22:43:01	937	8.3	13.01	370.6		
12/24/2017	22:43:31	888	8.3	12.88	374.7		
12/24/2017	22:44:01	912	8.3	12.93	378.9		
12/24/2017	22:44:31	900	8.3	12.93	383.0		
12/24/2017	22:45:01	874	8.2	12.90	387.1		
12/24/2017	22:45:31	895	8.2	12.92	391.3		
12/24/2017	22:46:01	883	8.3	12.94	395.4		
12/24/2017	22:46:31	886	8.4	12.95	399.6		
12/24/2017	22:47:01	887	8.3	12.94	403.7		
12/24/2017	22:47:31	878	8.3	12.94	407.9		
12/24/2017	22:48:01	874	8.3	12.97	412.0		
12/24/2017	22:48:31	877	8.3	12.94	416.2		
12/24/2017	22:49:01	887	8.3	12.86	420.3		
12/24/2017	22:49:31	886	8.3	12.91	424.5		
12/24/2017	22:50:01	892	8.2	12.96	428.6		
12/24/2017	22:50:31	901	8.3	12.91	432.7		
12/24/2017	22:51:01	935	8.2	12.94	436.8		
12/24/2017	22:51:31	943	8.3	12.95	441.0		
12/24/2017	22:52:01	976	8.3	12.97	445.1		
12/24/2017	22:52:31	984	8.2	12.94	449.2		
12/24/2017	22:53:01	984	8.2	12.90	453.3		
12/24/2017	22:53:31	1000	8.2	12.78	457.5		
12/24/2017	22:54:01	1017	8.3	12.79	461.6		
12/24/2017	22:54:31	991	8.3	12.92	465.7		
12/24/2017	22:55:00	980	8.3	12.87	469.7	End Tail Slurry	
12/24/2017	22:55:01	968	8.3	12.85	469.9		
12/24/2017	22:55:10	1010	8.3	12.87	471.1	Reset Total, Vol = 246 bbl	
12/24/2017	22:55:31	1023	8.2	12.88	474.0		
12/24/2017	22:56:01	694	7.4	10.77	477.7		
12/24/2017	22:56:31	68	0.1	10.81	478.4		
12/24/2017	22:57:01	46	0.0	10.82	478.4		
12/24/2017	22:57:31	120	1.8	10.75	478.6		
12/24/2017	22:58:01	111	3.4	10.77	480.2		
12/24/2017	22:58:31	67	2.2	9.98	481.4		
12/24/2017	22:59:01	79	2.7	9.88	482.6		
12/24/2017	22:59:31	103	3.3	9.92	484.5		
12/24/2017	23:00:01	105	3.7	8.62	486.4		

Well			Field	Job Start		Customer	Job Number
PAPA JO 2-2529N-8HZ PAPA JO 2-2529N-8HZ			Wattenberg	Dec/25/2017		ANADARKO	CSS9-00914
Date	Time 24-hr clock	Treating Pressure PSI	Flow Rate B/M	Density LB/G	Volume BBL	Message	
12/24/2017	23:01:01	120	3.6	9.76	490.1		
12/24/2017	23:01:31	103	3.6	9.73	491.9		
12/24/2017	23:02:01	104	3.6	9.73	493.7		
12/24/2017	23:02:31	100	3.4	9.74	495.5		
12/24/2017	23:03:01	61	0.0	9.71	496.8		
12/24/2017	23:03:31	87	0.0	9.73	496.8		
12/24/2017	23:04:01	285	0.0	9.71	496.8		
12/24/2017	23:04:31	162	4.6	9.75	498.9		
12/24/2017	23:05:01	185	4.6	9.72	501.5		
12/24/2017	23:05:31	162	3.7	9.76	503.8		
12/24/2017	23:06:01	159	4.6	9.76	506.1		
12/24/2017	23:06:31	157	4.6	9.75	508.4		
12/24/2017	23:07:01	157	4.6	9.75	510.7		
12/24/2017	23:07:31	155	4.6	9.76	513.0		
12/24/2017	23:08:01	159	4.6	9.74	515.3		
12/24/2017	23:08:31	150	4.6	9.76	517.6		
12/24/2017	23:09:01	146	4.7	9.73	519.9		
12/24/2017	23:09:31	156	4.7	9.77	522.2		
12/24/2017	23:10:01	158	4.6	9.77	524.5		
12/24/2017	23:10:31	65	0.0	9.73	526.3		
12/24/2017	23:11:01	45	0.1	9.89	526.3		
12/24/2017	23:11:31	41	0.1	9.87	526.3		
12/24/2017	23:12:00	39	0.1	9.84	526.3	Drop Top Plug	
12/24/2017	23:12:01	39	0.1	9.84	526.3		
12/24/2017	23:12:15	46	0.4	9.77	526.5	Start Displacement	
12/24/2017	23:12:20	46	0.1	9.81	526.5	Fresh Water	
12/24/2017	23:12:31	61	0.5	9.77	526.6		
12/24/2017	23:13:01	181	4.9	9.81	527.4		
12/24/2017	23:13:31	315	8.4	9.73	531.1		
12/24/2017	23:14:31	300	8.4	9.75	539.5		
12/24/2017	23:15:01	287	8.5	9.73	543.7		
12/24/2017	23:15:31	291	8.4	9.73	548.0		
12/24/2017	23:16:01	286	8.4	9.73	552.2		
12/24/2017	23:16:31	283	8.4	9.73	556.4		
12/24/2017	23:17:01	285	8.4	9.73	560.6		
12/24/2017	23:17:31	898	8.3	9.73	564.8		
12/24/2017	23:18:01	1130	8.3	9.73	568.9		
12/24/2017	23:18:31	1180	8.3	9.72	573.1		
12/24/2017	23:19:01	1209	8.3	9.74	577.2		
12/24/2017	23:19:31	1259	8.3	9.73	581.3		
12/24/2017	23:20:01	1295	8.2	9.73	585.5		
12/24/2017	23:20:31	1338	8.3	9.74	589.6		
12/24/2017	23:21:01	1368	8.2	9.75	593.7		
12/24/2017	23:21:31	1425	8.3	9.75	597.9		
12/24/2017	23:22:01	1463	8.3	9.75	602.0		
12/24/2017	23:22:31	1509	8.3	9.75	606.1		
12/24/2017	23:23:01	1563	8.3	9.75	610.2		
12/24/2017	23:23:20	1592	8.2	9.74	612.9	Good Returns	
12/24/2017	23:23:31	1612	8.2	9.75	614.4		
12/24/2017	23:24:01	1655	8.3	9.74	618.5		
12/24/2017	23:24:31	1707	8.2	9.76	622.6		
12/24/2017	23:25:01	1763	8.3	9.74	626.7		
12/24/2017	23:25:31	1805	8.2	9.75	630.9		
12/24/2017	23:26:01	1869	8.2	9.75	635.0		

Well			Field	Job Start		Customer	Job Number
PAPA JO 2-2529N-8HZ PAPA JO 2-2529N-8HZ			Wattenberg	Dec/25/2017		ANADARKO	CSS9-00914
Date	Time 24-hr clock	Treating Pressure PSI	Flow Rate B/M	Density LB/G	Volume BBL	Message	
12/24/2017	23:27:01	1990	8.3	9.75	643.2		
12/24/2017	23:27:31	2043	8.2	9.74	647.3		
12/24/2017	23:28:01	2109	8.2	9.75	651.4		
12/24/2017	23:28:31	2160	8.2	9.75	655.5		
12/24/2017	23:29:01	2208	8.2	9.76	659.6		
12/24/2017	23:29:31	2286	8.2	9.75	663.8		
12/24/2017	23:30:01	2339	8.2	9.75	667.9		
12/24/2017	23:30:31	2395	8.2	9.76	672.0		
12/24/2017	23:31:01	2464	8.2	9.75	676.1		
12/24/2017	23:31:31	2511	8.2	9.75	680.2		
12/24/2017	23:32:01	2563	8.2	9.76	684.2		
12/24/2017	23:32:31	2623	8.2	9.76	688.3		
12/24/2017	23:33:01	2707	8.2	9.76	692.4		
12/24/2017	23:33:31	2748	8.2	9.75	696.5		
12/24/2017	23:34:01	2824	8.2	9.75	700.6		
12/24/2017	23:34:31	2888	8.2	9.76	704.6		
12/24/2017	23:35:01	2945	8.2	9.75	708.7		
12/24/2017	23:35:31	3009	8.1	9.75	712.8		
12/24/2017	23:36:01	3059	8.1	9.75	716.8		
12/24/2017	23:36:31	3096	8.0	9.75	720.9		
12/24/2017	23:37:01	2864	6.2	9.76	724.8		
12/24/2017	23:37:31	2829	6.3	9.75	727.9		
12/24/2017	23:38:01	2765	6.3	9.75	731.1		
12/24/2017	23:38:31	2832	6.3	9.75	734.2		
12/24/2017	23:39:01	2828	6.3	9.76	737.4		
12/24/2017	23:39:31	2891	6.3	9.75	740.5		
12/24/2017	23:40:01	2909	6.3	9.75	743.7		
12/24/2017	23:40:31	2923	6.3	9.76	746.8		
12/24/2017	23:41:01	2885	6.3	9.75	750.0		
12/24/2017	23:41:31	2928	6.3	9.76	753.1		
12/24/2017	23:42:01	2967	6.3	9.76	756.3		
12/24/2017	23:42:31	2984	6.3	9.76	759.4		
12/24/2017	23:43:01	3006	6.3	9.76	762.6		
12/24/2017	23:43:31	3019	6.3	9.76	765.7		
12/24/2017	23:44:01	3000	6.3	9.75	768.9		
12/24/2017	23:44:31	3076	6.3	9.76	772.0		
12/24/2017	23:45:01	3080	6.3	9.77	775.2		
12/24/2017	23:45:31	3111	6.3	9.76	778.3		
12/24/2017	23:46:01	3128	6.3	9.76	781.5		
12/24/2017	23:46:31	3111	6.3	9.77	784.6		
12/24/2017	23:47:01	3151	6.3	9.77	787.8		
12/24/2017	23:47:31	3198	6.3	9.76	790.9		
12/24/2017	23:48:01	3228	6.2	9.77	794.0		
12/24/2017	23:48:31	3202	6.2	9.77	797.2		
12/24/2017	23:49:31	3196	6.3	9.76	803.4		
12/24/2017	23:50:01	3266	6.2	9.76	806.5		
12/24/2017	23:50:31	3298	6.1	9.76	809.6		
12/24/2017	23:51:01	2667	2.2	9.76	811.6		
12/24/2017	23:51:31	2511	2.2	9.76	812.8		
12/24/2017	23:52:01	2526	2.2	9.76	813.9		
12/24/2017	23:52:31	2869	4.1	9.75	815.8		
12/24/2017	23:53:01	2865	4.1	9.77	817.8		
12/24/2017	23:53:31	2881	4.0	9.77	819.8		
12/24/2017	23:54:01	2918	4.0	9.76	821.8		

Well PAPA JO 2-2529N-8HZ PAPA JO 2-2529N-8HZ			Field Wattenberg		Job Start Dec/25/2017	Customer ANADARKO	Job Number CSS9-00914
Date	Time 24-hr clock	Treating Pressure PSI	Flow Rate B/M	Density LB/G	Volume BBL	Message	
12/24/2017	23:55:01	2292	0.0	9.74	824.6		
12/24/2017	23:55:31	2151	0.0	9.74	824.6		
12/24/2017	23:56:01	2117	0.0	9.73	824.6		
12/24/2017	23:56:31	2103	0.0	9.73	824.6		
12/24/2017	23:57:01	2099	0.0	9.73	824.6		
12/24/2017	23:57:31	2096	0.0	9.74	824.6		
12/24/2017	23:58:01	2095	0.0	9.74	824.6		
12/24/2017	23:58:31	2096	0.0	9.74	824.6		
12/24/2017	23:59:01	2099	0.0	9.75	824.6		
12/24/2017	23:59:31	2098	0.0	9.75	824.6		
12/25/2017	00:00:01	2097	0.0	9.75	824.6		
12/25/2017	00:00:31	2099	0.0	9.75	824.6		
12/25/2017	00:01:01	2099	0.0	9.75	824.6		
12/25/2017	00:01:31	2096	0.0	9.75	824.6		
12/25/2017	00:02:01	2097	0.0	9.76	824.6		
12/25/2017	00:02:31	2095	0.0	9.76	824.6		
12/25/2017	00:03:01	2095	0.0	9.76	824.6		
12/25/2017	00:03:31	2096	0.0	9.76	824.6		
12/25/2017	00:04:01	2095	0.0	9.77	824.6		
12/25/2017	00:04:31	2099	0.0	9.77	824.6		
12/25/2017	00:05:01	2097	0.0	9.77	824.6		
12/25/2017	00:05:31	2098	0.0	9.77	824.6		
12/25/2017	00:06:01	2100	0.0	9.77	824.6		
12/25/2017	00:06:31	2106	0.0	9.78	824.6		
12/25/2017	00:07:01	2114	0.0	9.78	824.6		
12/25/2017	00:07:31	2116	0.0	9.78	824.6		
12/25/2017	00:08:01	2121	0.0	9.78	824.6		
12/25/2017	00:08:31	2125	0.0	9.78	824.6		
12/25/2017	00:09:01	2126	0.0	9.78	824.6		
12/25/2017	00:10:01	2129	0.0	9.78	824.6		
12/25/2017	00:10:31	2134	0.0	9.78	824.6		
12/25/2017	00:11:01	2133	0.0	9.77	824.6		
12/25/2017	00:11:31	2135	0.0	9.77	824.6		
12/25/2017	00:12:01	2135	0.0	9.77	824.6		
12/25/2017	00:12:31	2142	0.0	9.77	824.6		
12/25/2017	00:13:01	2137	0.0	9.77	824.6		
12/25/2017	00:13:31	2142	0.0	9.77	824.6		
12/25/2017	00:14:01	2137	0.0	9.77	824.6		
12/25/2017	00:14:31	2139	0.0	9.77	824.6		
12/25/2017	00:15:01	2138	0.0	9.77	824.6		
12/25/2017	00:15:31	2142	0.0	9.77	824.6		
12/25/2017	00:16:01	2140	0.0	9.77	824.6		
12/25/2017	00:16:31	2137	0.0	9.77	824.6		
12/25/2017	00:17:01	2143	0.0	9.77	824.6		
12/25/2017	00:17:31	2142	0.0	9.77	824.6		
12/25/2017	00:18:01	2141	0.0	9.77	824.6		
12/25/2017	00:18:31	2147	0.0	9.77	824.6		
12/25/2017	00:19:01	2141	0.0	9.77	824.6		
12/25/2017	00:19:31	2146	0.0	9.77	824.6		
12/25/2017	00:20:01	2146	0.0	9.79	824.6		
12/25/2017	00:20:31	2146	0.0	9.77	824.6		
12/25/2017	00:21:01	2145	0.0	9.77	824.6		
12/25/2017	00:21:31	2148	0.0	9.77	824.6		
12/25/2017	00:22:01	2146	0.0	9.77	824.6		

Well PAPA JO 2-2529N-8HZ PAPA JO 2-2529N-8HZ			Field Wattenberg		Job Start Dec/25/2017	Customer ANADARKO	Job Number CSS9-00914
Date	Time 24-hr clock	Treating Pressure PSI	Flow Rate B/M	Density LB/G	Volume BBL	Message	
12/25/2017	00:23:01	2147	0.0	9.77	824.6		
12/25/2017	00:23:31	2146	0.0	9.77	824.6		
12/25/2017	00:24:01	2143	0.0	9.77	824.6		
12/25/2017	00:24:31	2152	0.0	9.78	824.6		
12/25/2017	00:25:01	2149	0.0	9.77	824.6		
12/25/2017	00:25:31	2150	0.0	9.75	824.6		
12/25/2017	00:26:01	2150	0.0	9.77	824.6		
12/25/2017	00:26:31	2148	0.0	9.77	824.6		
12/25/2017	00:27:01	2149	0.0	9.77	824.6		
12/25/2017	00:27:31	2150	0.0	9.77	824.6		
12/25/2017	00:28:01	716	0.0	9.77	824.6		
12/25/2017	00:28:31	32	0.0	9.77	824.6		
12/25/2017	00:29:01	31	0.0	9.77	824.6		
12/25/2017	00:29:31	31	0.0	9.77	824.6		
12/25/2017	00:30:01	30	0.0	9.77	824.6		
12/25/2017	00:30:31	29	0.0	9.77	824.6		
12/25/2017	00:31:01	30	0.1	9.77	824.6		
12/25/2017	00:31:31	348	3.7	9.75	824.9		
12/25/2017	00:32:01	2399	4.1	9.75	826.9		
12/25/2017	00:32:31	3186	2.2	9.76	828.7		
12/25/2017	00:33:01	3096	2.2	9.74	829.8		
12/25/2017	00:33:31	2841	2.2	9.76	830.9		
12/25/2017	00:34:01	2815	2.2	9.76	832.0		
12/25/2017	00:34:31	2789	2.2	9.76	833.2		
12/25/2017	00:35:01	2825	2.2	9.76	834.3		
12/25/2017	00:35:31	2821	2.2	9.77	835.4		
12/25/2017	00:36:01	2731	2.2	9.77	836.5		
12/25/2017	00:36:31	2768	2.2	9.77	837.6		
12/25/2017	00:37:01	2757	2.2	9.76	838.7		
12/25/2017	00:37:31	2811	2.2	9.77	839.8		
12/25/2017	00:38:01	2806	2.2	9.76	841.0		
12/25/2017	00:38:31	2801	2.2	9.76	842.1		
12/25/2017	00:39:01	2762	2.2	9.77	843.2		
12/25/2017	00:39:10	2772	2.2	9.77	843.5	Good Returns	
12/25/2017	00:39:31	2815	2.2	9.77	844.3		
12/25/2017	00:40:01	2827	2.2	9.77	845.4		
12/25/2017	00:40:31	2836	2.2	9.77	846.5		
12/25/2017	00:41:01	2783	2.2	9.76	847.6		
12/25/2017	00:41:31	2790	2.2	9.77	848.8		
12/25/2017	00:42:00	2765	2.2	9.77	849.8	Bump Top Plug	
12/25/2017	00:42:01	2826	2.2	9.77	849.9		
12/25/2017	00:42:05	2777	2.2	9.77	850.0	@3200 psi	
12/25/2017	00:42:31	2847	2.2	9.76	851.0		
12/25/2017	00:43:01	3225	0.0	9.77	851.6		
12/25/2017	00:43:31	3317	0.0	9.75	851.6		
12/25/2017	00:44:01	3350	0.0	9.75	851.6		
12/25/2017	00:44:10	3322	0.0	9.75	851.6	3.5 bbls Back After Bleed Off	
12/25/2017	00:45:01	56	0.0	9.75	851.6		
12/25/2017	00:45:31	30	0.0	9.75	851.6		
12/25/2017	00:46:01	34	0.0	9.75	851.6		
12/25/2017	00:46:31	231	0.8	9.75	851.8		
12/25/2017	00:47:01	739	1.3	9.74	852.3		
12/25/2017	00:47:31	1552	2.1	9.75	853.1		
12/25/2017	00:48:01	2531	2.1	9.76	854.2		

Well			Field		Job Start	Customer	Job Number
PAPA JO 2-2529N-8HZ PAPA JO 2-2529N-8HZ			Wattenberg		Dec/25/2017	ANADARKO	CSS9-00914
Date	Time 24-hr clock	Treating Pressure PSI	Flow Rate B/M	Density LB/G	Volume BBL	Message	
12/25/2017	00:49:00	4400	1.8	9.75	856.2	Burst Plug At 4500 psi	
12/25/2017	00:49:01	4437	1.8	9.75	856.2		
12/25/2017	00:49:31	2949	2.2	9.77	857.2		
12/25/2017	00:50:01	2808	2.2	9.77	858.3		
12/25/2017	00:50:31	2844	2.2	9.77	859.4		
12/25/2017	00:51:00	2769	2.2	9.77	860.5	Pumped 5 bbls Fresh Water For Wet Shoe	
12/25/2017	00:51:01	2808	2.2	9.78	860.5		
12/25/2017	00:51:30	2738	2.2	9.77	861.6	2.5 bbls Back After Bleed Off	
12/25/2017	00:51:31	2744	2.2	9.77	861.6		
12/25/2017	00:52:01	2452	0.0	9.77	862.1		
12/25/2017	00:52:31	1419	0.0	9.76	862.1		
12/25/2017	00:53:00	37	0.2	9.76	862.2	End Displacement	
12/25/2017	00:53:01	37	0.2	9.76	862.2		
12/25/2017	00:53:10	33	0.1	9.76	862.2	Reset Total, Vol = 316+5 bbl	
12/25/2017	00:53:31	31	0.1	9.75	862.2		
12/25/2017	00:54:01	29	0.1	9.75	862.2		
12/25/2017	00:54:31	33	0.5	9.81	862.3		
12/25/2017	00:55:01	32	0.0	9.79	862.6		
12/25/2017	00:55:31	32	0.0	9.81	863.7		
12/25/2017	00:56:01	28	0.0	9.81	864.4		
12/25/2017	00:56:31	28	0.0	9.82	864.4		
12/25/2017	00:57:01	112	0.0	9.84	864.4		
12/25/2017	00:57:31	93	0.0	9.82	864.4		
12/25/2017	00:58:01	74	0.0	9.82	864.4		
12/25/2017	00:58:31	34	0.0	9.81	864.4		
12/25/2017	00:59:01	25	0.0	9.82	864.4		
12/25/2017	00:59:31	24	0.0	9.81	864.4		
12/25/2017	01:00:01	24	0.0	9.82	864.4		
12/25/2017	01:00:31	27	0.0	9.82	864.4		
12/25/2017	01:01:01	26	0.0	9.82	864.4		
12/25/2017	01:01:31	27	0.0	9.78	864.4		
12/25/2017	01:02:01	27	0.0	9.77	864.4		
12/25/2017	01:02:31	27	0.0	9.86	864.4		
12/25/2017	01:03:01	25	0.0	9.85	864.4		
12/25/2017	01:03:31	25	0.0	2.77	864.4		
12/25/2017	01:04:01	24	0.0	2.77	864.4		
12/25/2017	01:04:31	25	0.0	2.78	864.4		
12/25/2017	01:05:01	32	0.0	2.77	864.4		
12/25/2017	01:05:31	31	0.0	2.77	864.4		
12/25/2017	01:06:01	23	0.0	2.77	864.4		
12/25/2017	01:06:31	22	0.0	2.78	864.4		
12/25/2017	01:07:01	22	0.0	2.77	864.4		
12/25/2017	01:07:31	21	0.0	2.77	864.4		
12/25/2017	01:08:01	21	0.0	2.77	864.4		
12/25/2017	01:08:31	22	0.0	2.77	864.4		

Well PAPA JO 2-2529N-8HZ PAPA JO 2-2529N-8HZ	Field Wattenberg	Job Start Dec/25/2017	Customer ANADARKO	Job Number CSS9-00914
--	----------------------------	---------------------------------	-----------------------------	---------------------------------

Post Job Summary

Average Pump Rates, bbl/min					Volume of Fluid Injected, bbl					
Slurry 5.3	N2	Mud	Maximum Rate 25.0		Total Slurry 397.0	Mud 0.0	Spacer 60.0	N2		
Treating Pressure Summary, psi					Breakdown Fluid					
Maximum 6491	Final 21	Average 1325	Bump Plug to 3200	Breakdown	Type		Volume bbl		Density lb/gal	
Avg. N2 Percent %		Designed Slurry Volume 0.0 bbl		Displacement 316.0 bbl		Mix Water Temp degF		Cement Circulated to Surface? <input type="checkbox"/>		Volume bbl
								Washed Thru Perfs <input type="checkbox"/>		To ft
Customer or Authorized Representative -				Schlumberger Supervisor Reema Alashgar				Circulation Lost <input type="checkbox"/>		Job Completed <input checked="" type="checkbox"/>
								-		-