

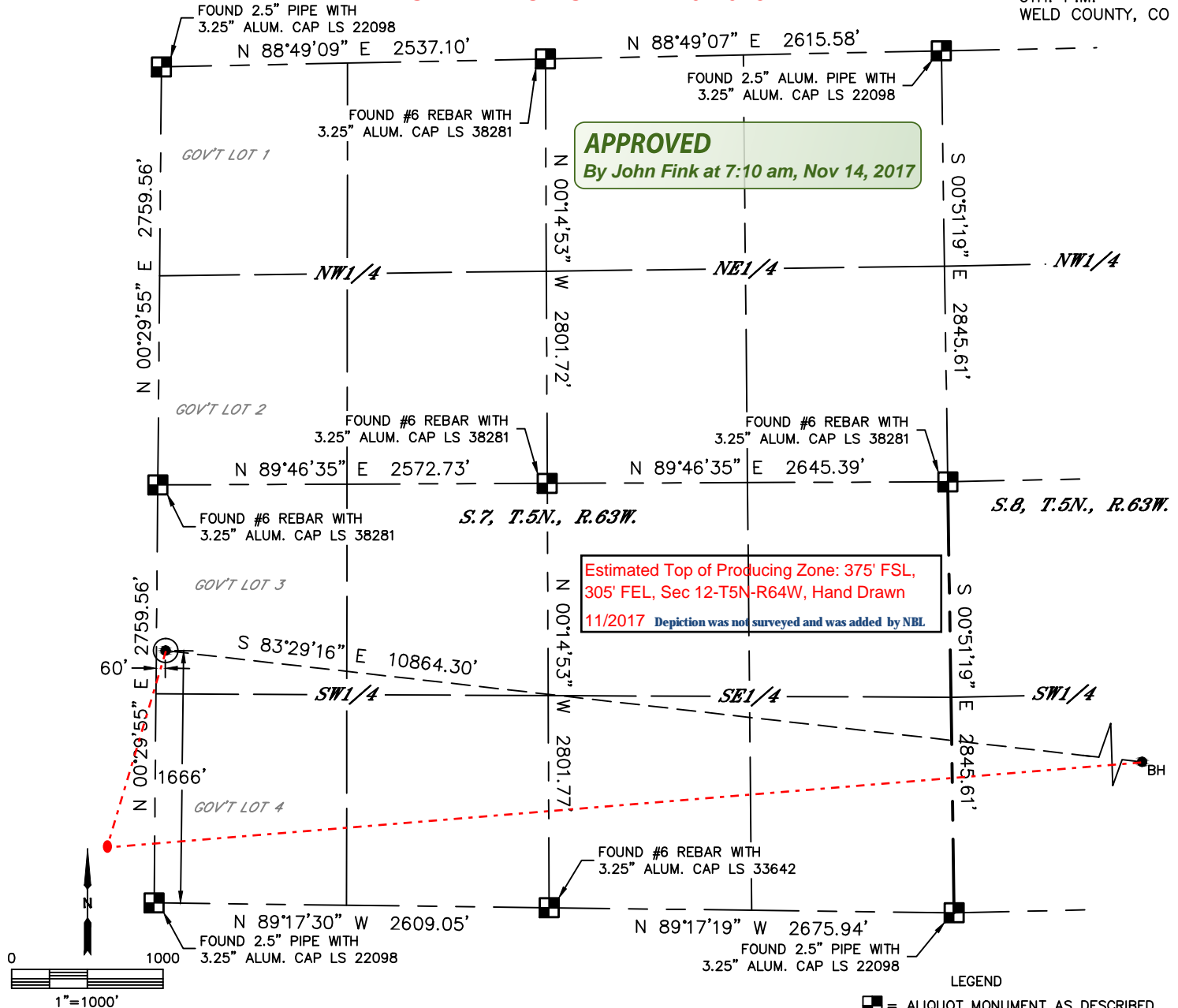


Lat40°, Inc. 6250 W. 10th Street, Unit 2, Greeley, CO 970-515-5294

WELL LOCATION CERTIFICATE

SLW RANCH STATE BB07-615

SECTION: 7
TOWNSHIP: 5N
RANGE: 63W
6TH. P.M.
WELD COUNTY, CO



CLIENT: NOBLE ENERGY, INC.				LANDMAN: CORY NEIGHBORS			
INSTRUMENT OPERATOR: SCOTT SHERARD				SURVEY DATE: 3/27/2017		SURFACE USE: RANGELAND	
SHL FOOTAGE	SHL LAT°	SHL LONG°	SHL PDOP	SHL ELEV (FT.)	SHL 1/4/1/4	SHL S-T-R	
1666	FSL	60	FWL	40.41072	-104.48880	2.0	4617
				NWSW		7-5-63	

BHL FOOTAGE	BHL LAT°	BHL LONG°	BHL S-T-R
360	FSL	385	FWL
		40.40700	-104.45010
		9-5-63	

NEAREST EXISTING WELL IN SHL 1/4/1/4	
EXISTING WELL	N/A
NEAREST CULTURAL ITEMS	
BUILDING	±4407' SW
BUILDING UNIT	±4552' SW
HIGH OCCUPANCY BUILDING UNIT	5280'+
DESIGNATED OUTSIDE ACTIVITY AREA	5280'+
PUBLIC ROAD (COUNTY ROAD 388)	±5045' SW
ABOVE GROUND UTILITY	±2475' N
RAILROAD	5280'+
PROPERTY LINE	±60' W

NOTE:

- 1) Bearings shown are Grid Bearings of the Colorado State Plane Coordinate System, North Zone, North American Datum 1983. The lineal dimensions as contained herein are based upon the "U.S. Survey Foot."
- 2) Distances to section lines measured at 90 degrees from said section lines.
- 3) Ground elevations are based on an observed GPS elevation (NAVD 1988 DATUM).
- 4) Latitude and Longitude shown are (NAD 83 DATUM).
- 5) IMPROVEMENTS: See LOCATION DRAWING for all visible improvements within 500' of oil and gas location.
- 6) This map does not represent a boundary survey.

SHEET 1 OF 3

Jason S. Allee-On behalf of Lat40°, Inc.
Colorado Licensed Professional Land Surveyor No. 38479
DATE: 8/24/2017
PROJECT#: 2017024



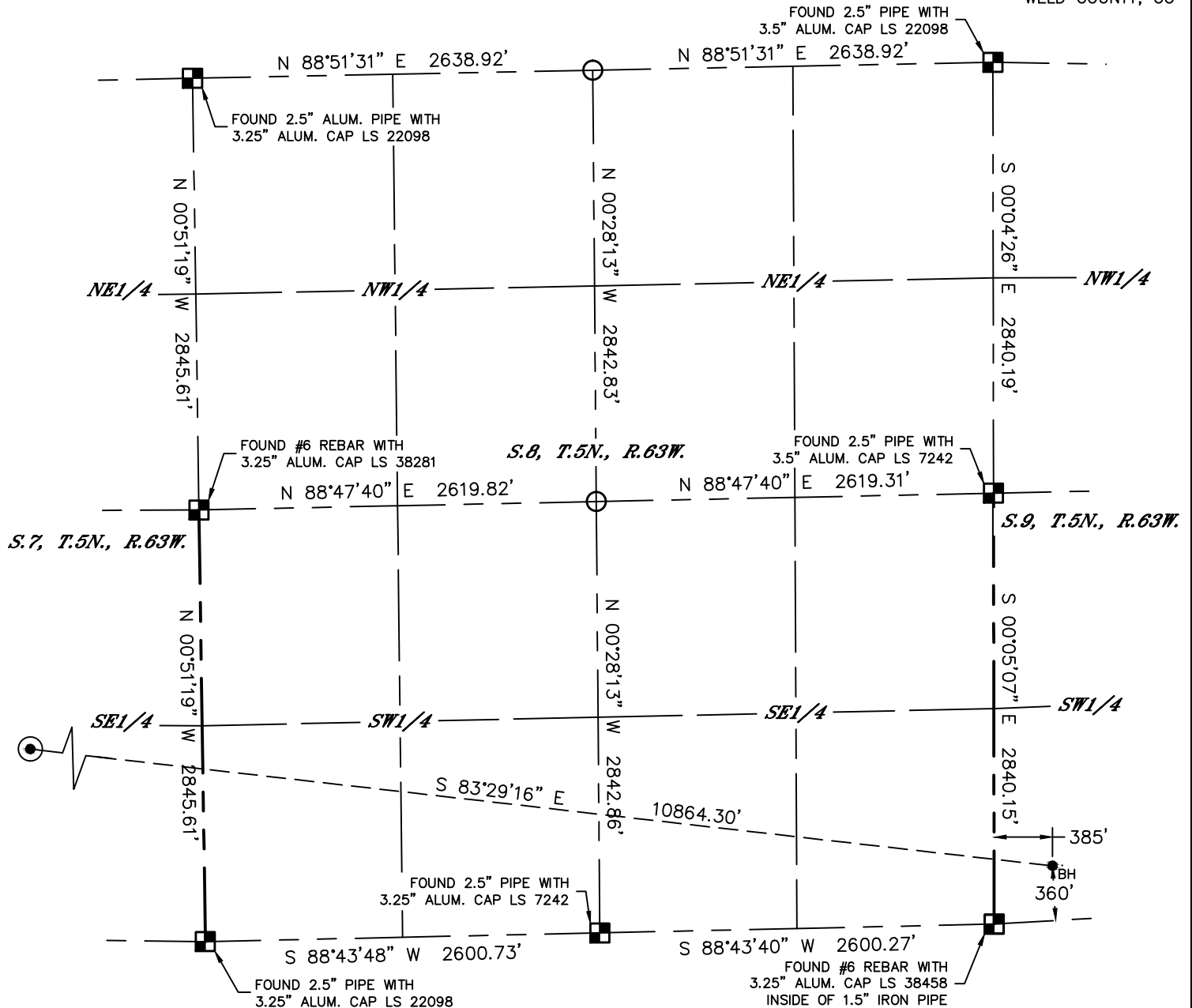


Lat40°, Inc. 6250 W. 10th Street, Unit 2, Greeley, CO 970-515-5294

WELL LOCATION CERTIFICATE

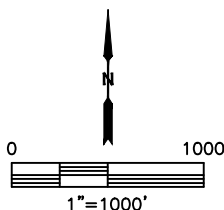
SLW RANCH STATE BB07-615

SECTION: 7
TOWNSHIP: 5N
RANGE: 63W
6TH. P.M.
WELD COUNTY, CO



LEGEND

- = ALIQUOT MONUMENT AS DESCRIBED
- = CALCULATED POSITION
- = SURFACE HOLE LOCATION (SHL)
- ▲ = ENTRY POINT LOCATION (EP)
- _{BH} = BOTTOM HOLE LOCATION (BHL)
- ⊗ = EXISTING WELL
- ⊙ = ABANDONED WELL



SHEET 2 OF 3

Jason S. Allee—On behalf of Lat40°, Inc.
Colorado Licensed Professional Land Surveyor No. 38479
DATE: 8/24/2017
PROJECT#: 2017024

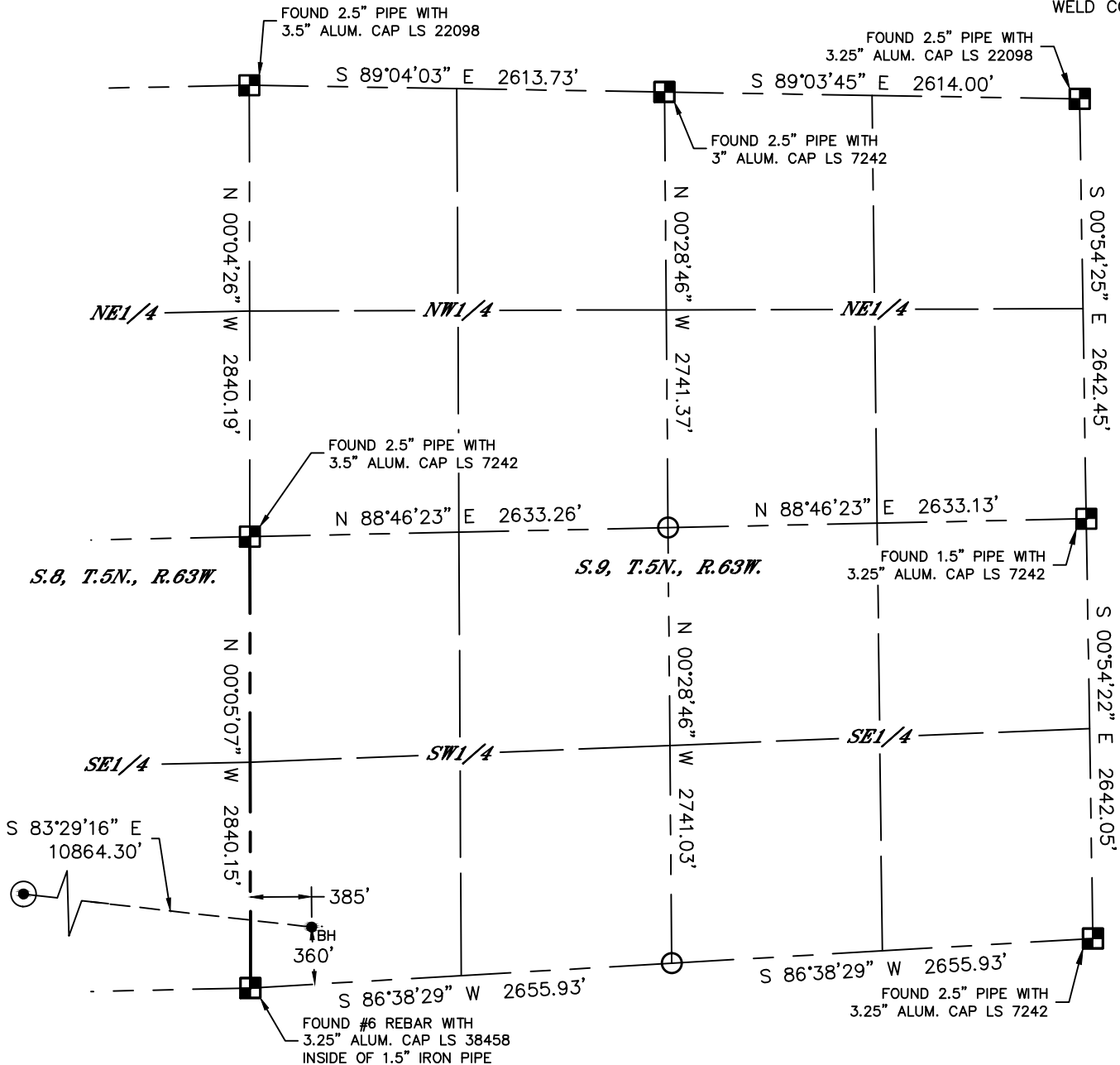


Lat40°, Inc. 6250 W. 10th Street, Unit 2, Greeley, CO 970-515-5294

WELL LOCATION CERTIFICATE

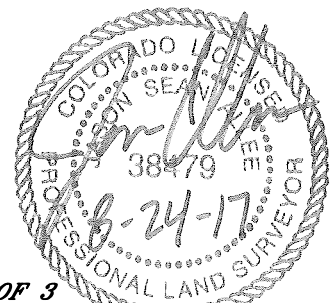
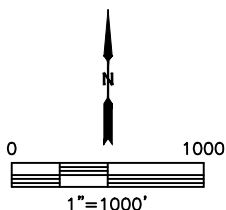
SLW RANCH STATE BB07-615

SECTION: 7
TOWNSHIP: 5N
RANGE: 63W
6TH. P.M.
WELD COUNTY, CO



LEGEND

- = ALIQUOT MONUMENT AS DESCRIBED
- = CALCULATED POSITION
- = SURFACE HOLE LOCATION (SHL)
- = ENTRY POINT LOCATION (EP)
- = BOTTOM HOLE LOCATION (BHL)
- = EXISTING WELL
- = ABANDONED WELL



SHEET 3 OF 3

Jason S. Allee—On behalf of Lat40°, Inc.
Colorado Licensed Professional Land Surveyor No. 38479
DATE: 8/24/2017
PROJECT#: 2017024