

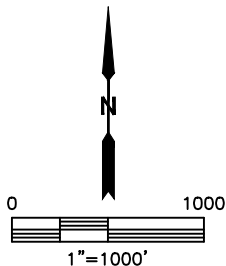
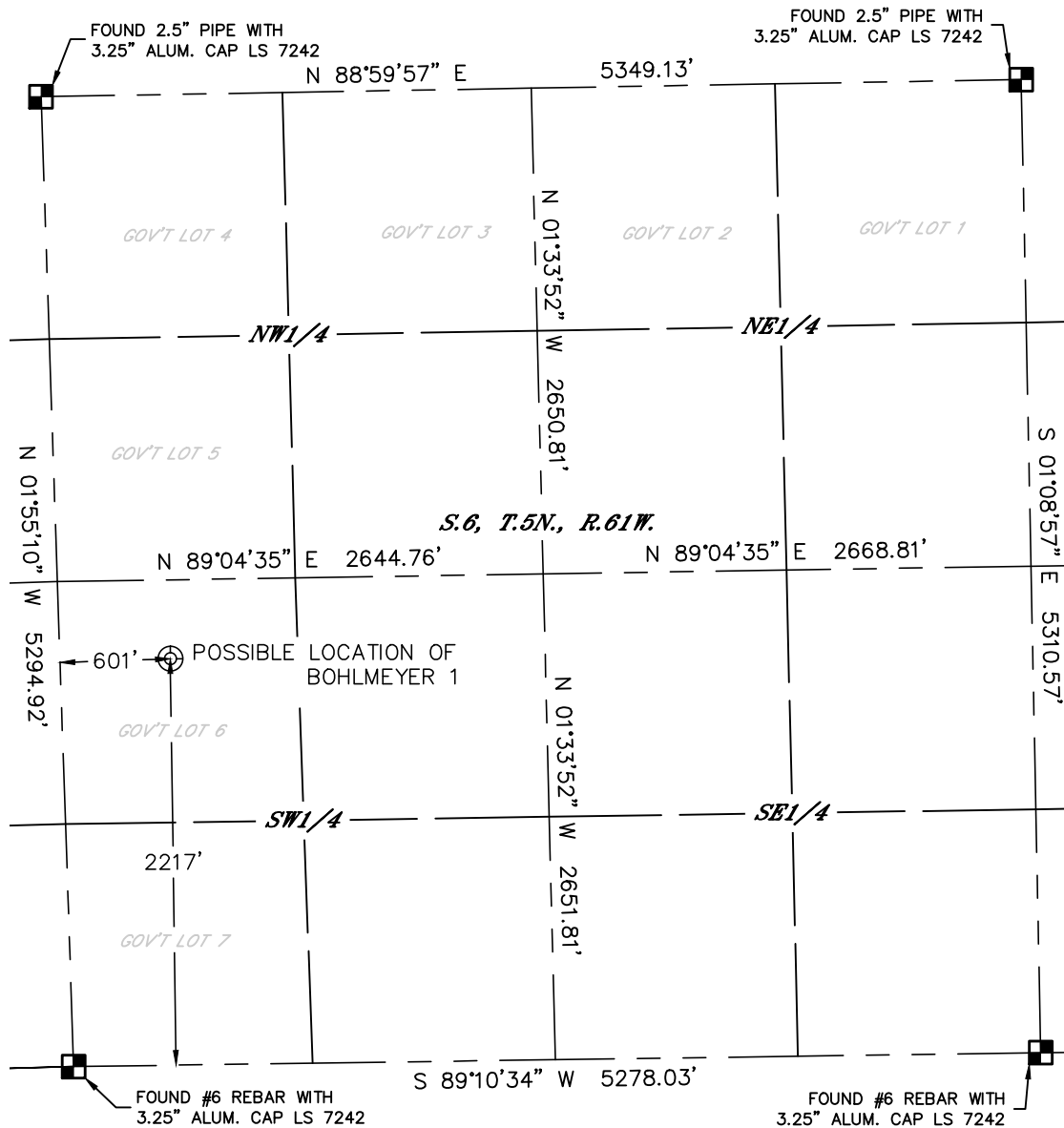


Lat40°, Inc. 6250 W. 10th Street, Unit 2, Greeley, CO 970-515-5294

PLUGGED & ABANDONED WELL EXHIBIT

THIS MAP DOES NOT REPRESENT A BOUNDARY SURVEY
BOHLMeyer 1

SECTION: 6
TOWNSHIP: 5N
RANGE: 61W



SURFACE LOCATION
LAT: 40.42896°N
LONG: 104.25985°W
PDOP: 1.9
ELEV: 4604'
1/4,1/4: NWSW

SURFACE LOCATION DESCRIPTION
FOUND A STRONG METAL DETECTOR SIGNAL WITHIN 15'
DIA. OF LOCATION. SET T-POST WITH PINK LATH AND
FLAGGING

LEGEND

- = ALIQUOT MONUMENT AS DESCRIBED
- = CALCULATED POSITION

DATE: 04/08/2015
PROJECT#: 2013173



Lat40°, Inc. 6250 W. 10th Street, Unit 2, Greeley, CO 970-515-5294

P&A WELL LOCATION PICTURES

BOHLMAYER 1

SECTION: 6
TOWNSHIP: 5N
RANGE: 61W

DATE: 04/02/2015



VIEW NORTH



VIEW WEST



VIEW EAST



VIEW SOUTH

DATE: 04/08/2015
PROJECT#: 2013173