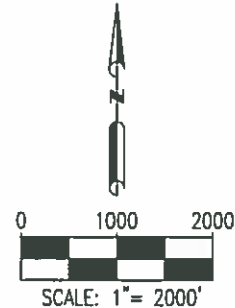
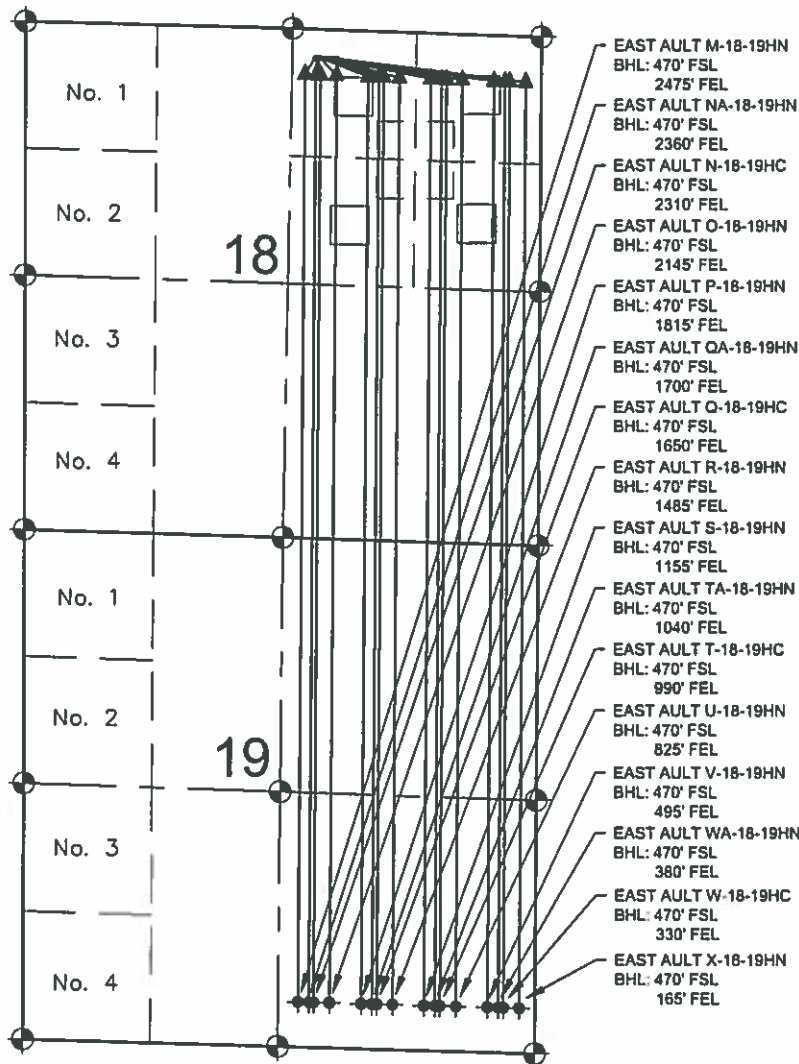


# EAST AULT 18-C PAD MULTI-WELL PLAN



## NOTES:

- EAST AULT M-18-19HN TO BE AT 301' FNL & 2367' FEL.  
BOTTOM HOLE AT 470' FSL & 2475' FEL, SEC. 19.
- EAST AULT NA-18-19HN TO BE AT 301' FNL & 2352' FEL.  
BOTTOM HOLE AT 470' FSL & 2360' FEL, SEC. 19.
- EAST AULT N-18-19HC TO BE AT 301' FNL & 2337' FEL.  
BOTTOM HOLE AT 470' FSL & 2310' FEL, SEC. 19.
- EAST AULT O-18-19HN TO BE AT 301' FNL & 2322' FEL.  
BOTTOM HOLE AT 470' FSL & 2145' FEL, SEC. 19.
- EAST AULT P-18-19HN TO BE AT 301' FNL & 2307' FEL.  
BOTTOM HOLE AT 470' FSL & 1815' FEL, SEC. 19.
- EAST AULT QA-18-19HN TO BE AT 300' FNL & 2292' FEL.  
BOTTOM HOLE AT 470' FSL & 1700' FEL, SEC. 19.
- EAST AULT Q-18-19HC TO BE AT 300' FNL & 2277' FEL.  
BOTTOM HOLE AT 470' FSL & 1650' FEL, SEC. 19.
- EAST AULT R-18-19HN TO BE AT 300' FNL & 2262' FEL.  
BOTTOM HOLE AT 470' FSL & 1485' FEL, SEC. 19.
- EAST AULT S-18-19HN TO BE AT 300' FNL & 2247' FEL.  
BOTTOM HOLE AT 470' FSL & 1155' FEL, SEC. 19.
- EAST AULT TA-18-19HN TO BE AT 300' FNL & 2232' FEL.  
BOTTOM HOLE AT 470' FSL & 1040' FEL, SEC. 19.
- EAST AULT T-18-19HC TO BE AT 300' FNL & 2217' FEL.  
BOTTOM HOLE AT 470' FSL & 990' FEL, SEC. 19.
- EAST AULT U-18-19HN TO BE AT 299' FNL & 2202' FEL.  
BOTTOM HOLE AT 470' FSL & 825' FEL, SEC. 19.
- EAST AULT V-18-19HN TO BE AT 299' FNL & 2187' FEL.  
BOTTOM HOLE AT 470' FSL & 495' FEL, SEC. 19.
- EAST AULT WA-18-19HN TO BE AT 299' FNL & 2172' FEL.  
BOTTOM HOLE AT 470' FSL & 380' FEL, SEC. 19.
- EAST AULT W-18-19HC TO BE AT 299' FNL & 2157' FEL.  
BOTTOM HOLE AT 470' FSL & 330' FEL, SEC. 19.
- EAST AULT X-18-19HN TO BE AT 299' FNL & 2142' FEL.  
BOTTOM HOLE AT 470' FSL & 165' FEL, SEC. 19.

## LEGEND

- = EXISTING MONUMENT    ◆ = BOTTOM HOLE
- = CALCULATED POSITION    ▲ = LANDING POINT
- = PROPOSED WELL    BHL = BOTTOM HOLE LOCATION
- ◆ = EXISTING WELL

## NOTES:

1. THIS FIELD SURVEY CONFORMS TO THE MINIMUM STANDARDS SET BY THE C.O.G.C.C., RULE NO. 215
2. ALL DISTANCES AND BEARINGS SHOWN HEREON ARE GROUND VALUES AS GPS MEASURED IN THE FIELD, WITH TIES TO WELLS MEASURED PERPENDICULAR TO SECTION LINES. THIS LOW DISTORTION PROJECTION (LDP) IS BASED ON THE NORTH AMERICAN DATUM OF 1983, U.S. SURVEY FOOT WITH A LATITUDE ORIGIN OF 40 568059"N, A CENTRAL MERIDIAN LONGITUDE OF 104 658844"W, AND A SCALE FACTOR ON THE CENTRAL MERIDIAN OF 1.000230 (EXACT). THE LDP BASIS OF BEARINGS IS GEODETIC NORTH.
3. FIELD VERIFICATION OF MONUMENTS COMPLETED WITHIN 1 YEAR OF SIGNATURE DATE.