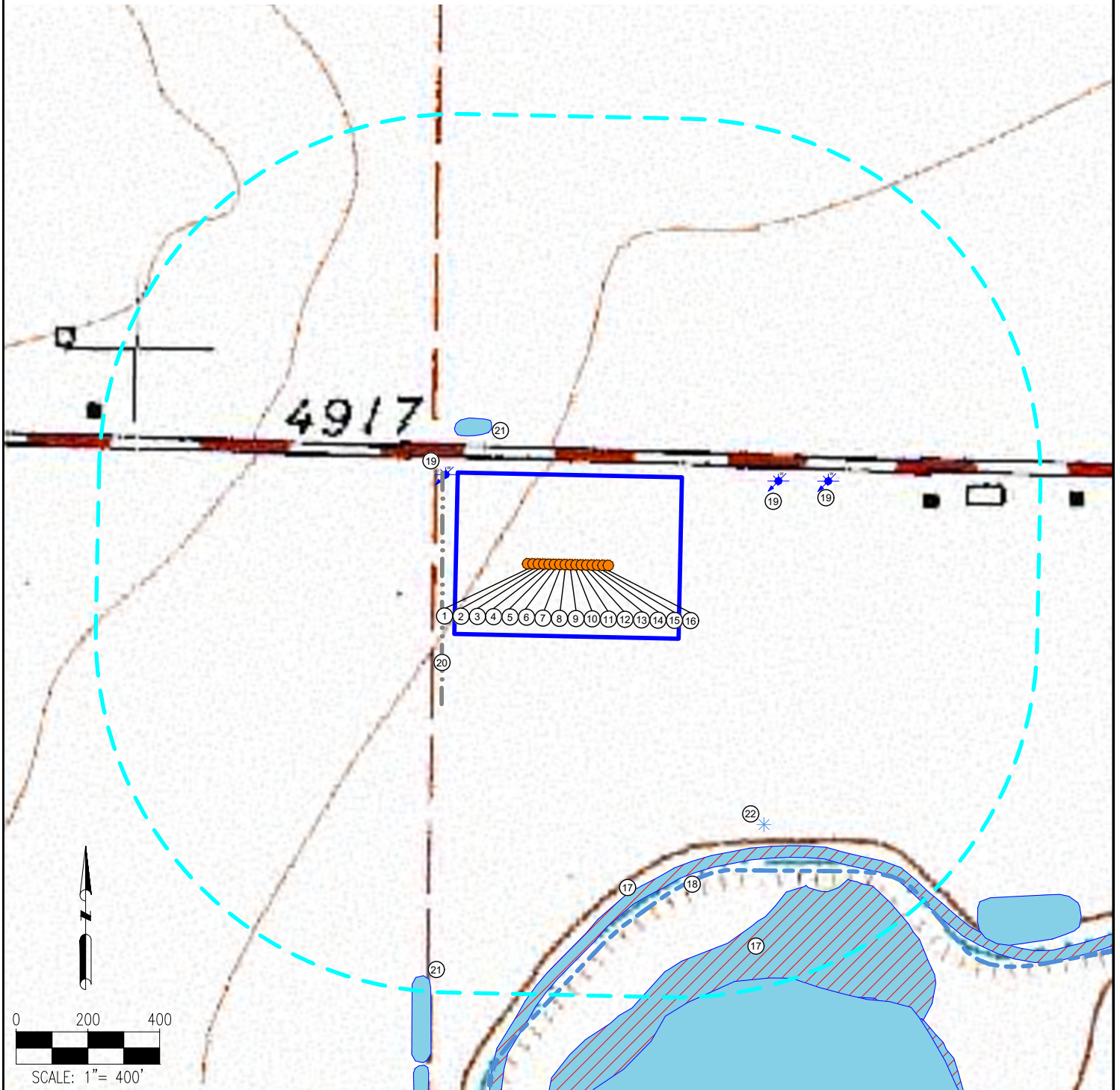


EAST AULT 18-C PAD HYDROLOGY MAP



MEASUREMENTS ARE MADE FROM THE NEAREST EDGE OF THE DISTURBANCE AREA.

- | | | |
|-------------------------|--------------------------|--|
| 1. EAST AULT M-18-19HN | 8. EAST AULT R-18-19HN | 15. EAST AULT W-18-19HC |
| 2. EAST AULT NA-18-19HN | 9. EAST AULT S-18-19HN | 16. EAST AULT X-18-19HN |
| 3. EAST AULT N-18-19HC | 10. EAST AULT TA-18-19HN | 17. WETLANDS ARE $\pm 611'$ SE, $\pm 767'$ SE |
| 4. EAST AULT O-18-19HN | 11. EAST AULT T-18-19HC | 18. EATON DITCH CANAL IS $\pm 659'$ SE |
| 5. EAST AULT P-18-19HN | 12. EAST AULT U-18-19HN | 19. WATER WELLS (Field Verified) ARE $\pm 34'$ W, $\pm 269'$ E, $\pm 408'$ E |
| 6. EAST AULT QA-18-19HN | 13. EAST AULT V-18-19HN | 20. CONCRETE DITCH IS $\pm 35'$ W |
| 7. EAST AULT Q-18-19HC | 14. EAST AULT WA-18-19HN | 21. PONDS ARE $\pm 103'$ N, $\pm 957'$ SW |

22. PIVOT POINT IS $\pm 570'$ SE

LEGEND:

- | | | |
|-----------------|------------------|--------------------|
| = PROPOSED WELL | = CANAL | = POND |
| = WATER WELL | = CONCRETE DITCH | = DISTURBANCE AREA |
| = PIVOT POINT | = 1000' RADIUS | = WETLANDS |

DISCLAIMER:
THIS PLOT DOES NOT REPRESENT A MONUMENTED LAND SURVEY AND SHOULD NOT BE RELIED UPON TO DETERMINE BOUNDARY LINES, PROPERTY OWNERSHIP OR OTHER PROPERTY INTERESTS. PARCEL LINES, IF DEPICTED HAVE NOT BEEN FIELD VERIFIED AND MAY BE BASED UPON PUBLICLY AVAILABLE DATA THAT ALSO HAS NOT BEEN INDEPENDENTLY VERIFIED.

DATA SOURCE:
TOPO MAP: USGS
NHD: USGS

PUBLICLY AVAILABLE DATA SOURCES HAVE NOT BEEN INDEPENDENTLY VERIFIED BY ASCENT.



FIELD DATE:
10-19-17

DRAWING DATE:
12-02-17

BY:
MJW

CHECKED:
CSG

SITE NAME:
EAST AULT 18-C PAD

SURFACE LOCATION:
**NW 1/4 NE 1/4 SEC. 18, T7N, R65W, 6TH P.M.
WELD COUNTY, COLORADO**

PREPARED FOR:

BAYSWATER
EXPLORATION AND PRODUCTION, LLC