



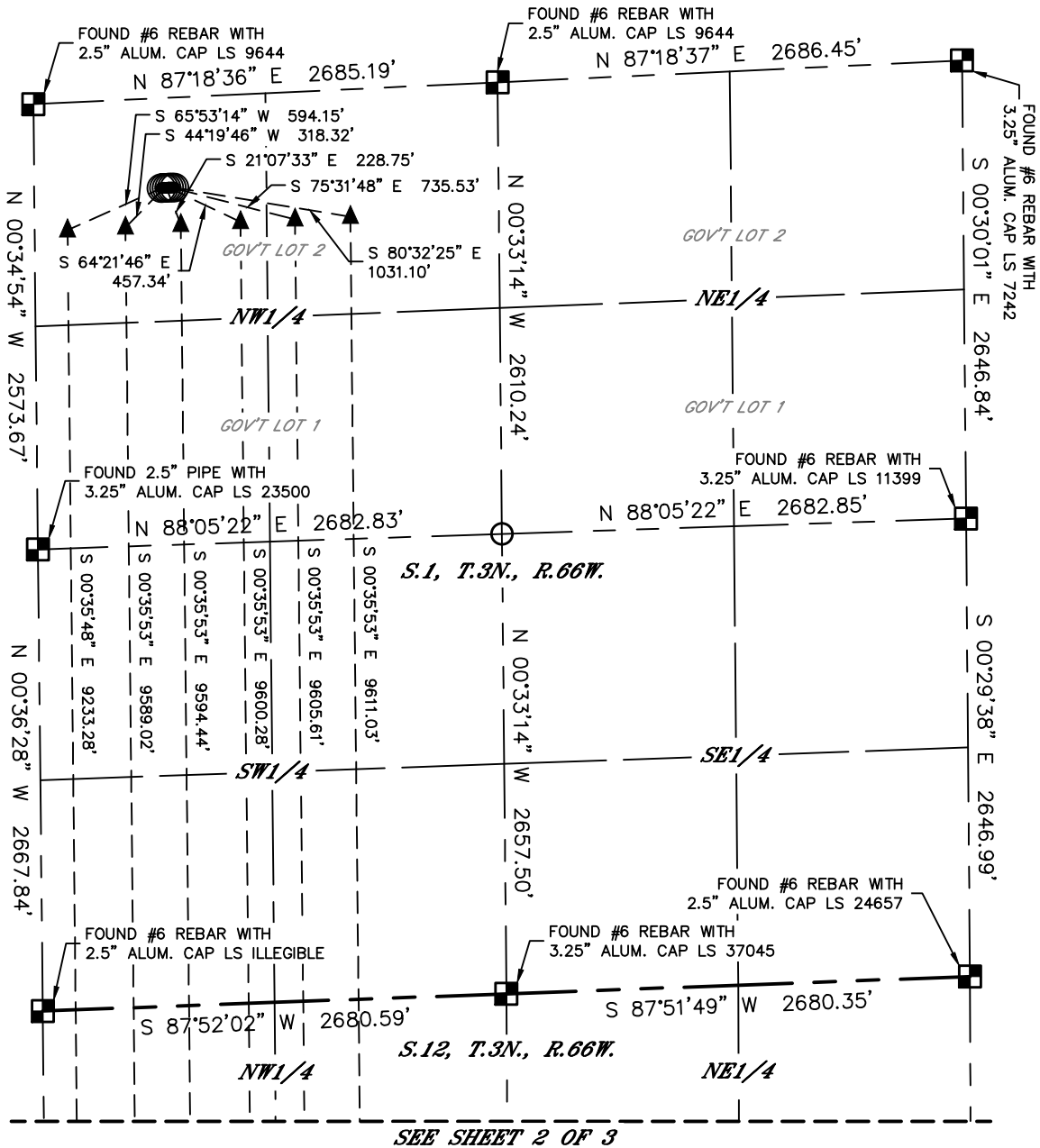
Lat40°, Inc. 6250 W. 10th Street, Unit 2, Greeley, CO 970-515-5294

MULTI-WELL PLAN

RIDGWAY 3N66W1 1-6 PAD

THIS MAP DOES NOT REPRESENT A BOUNDARY SURVEY

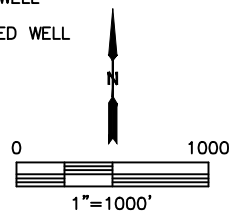
SECTION: 1
TOWNSHIP: 3N
RANGE: 66W
6TH. P.M.
WELD COUNTY, CO



LEGEND

- = ALIQUOT MONUMENT AS DESCRIBED
- = CALCULATED POSITION
- = SURFACE HOLE LOCATION (SHL)
- ▲ = ENTRY POINT LOCATION (EP)
- _{BH} = BOTTOM HOLE LOCATION (BHL)
- ⊙ = EXISTING WELL
- ⊙ = ABANDONED WELL

#	WELL NAME	BHL FOOTAGE				BHL LAT °	BHL LONG °	BHL S-T-R
1	RIDGWAY 1N	500	FSL	190	FWL	40.23373	-104.73414	12-3-66
2	RIDGWAY 2N	150	FSL	525	FWL	40.23279	-104.73294	12-3-66
3	RIDGWAY 3N	150	FSL	845	FWL	40.23281	-104.73179	12-3-66
4	RIDGWAY 4N	150	FSL	1190	FWL	40.23283	-104.73056	12-3-66
5	RIDGWAY 5N	150	FSL	1505	FWL	40.23285	-104.72943	12-3-66
6	RIDGWAY 6N	150	FSL	1825	FWL	40.23287	-104.72828	12-3-66





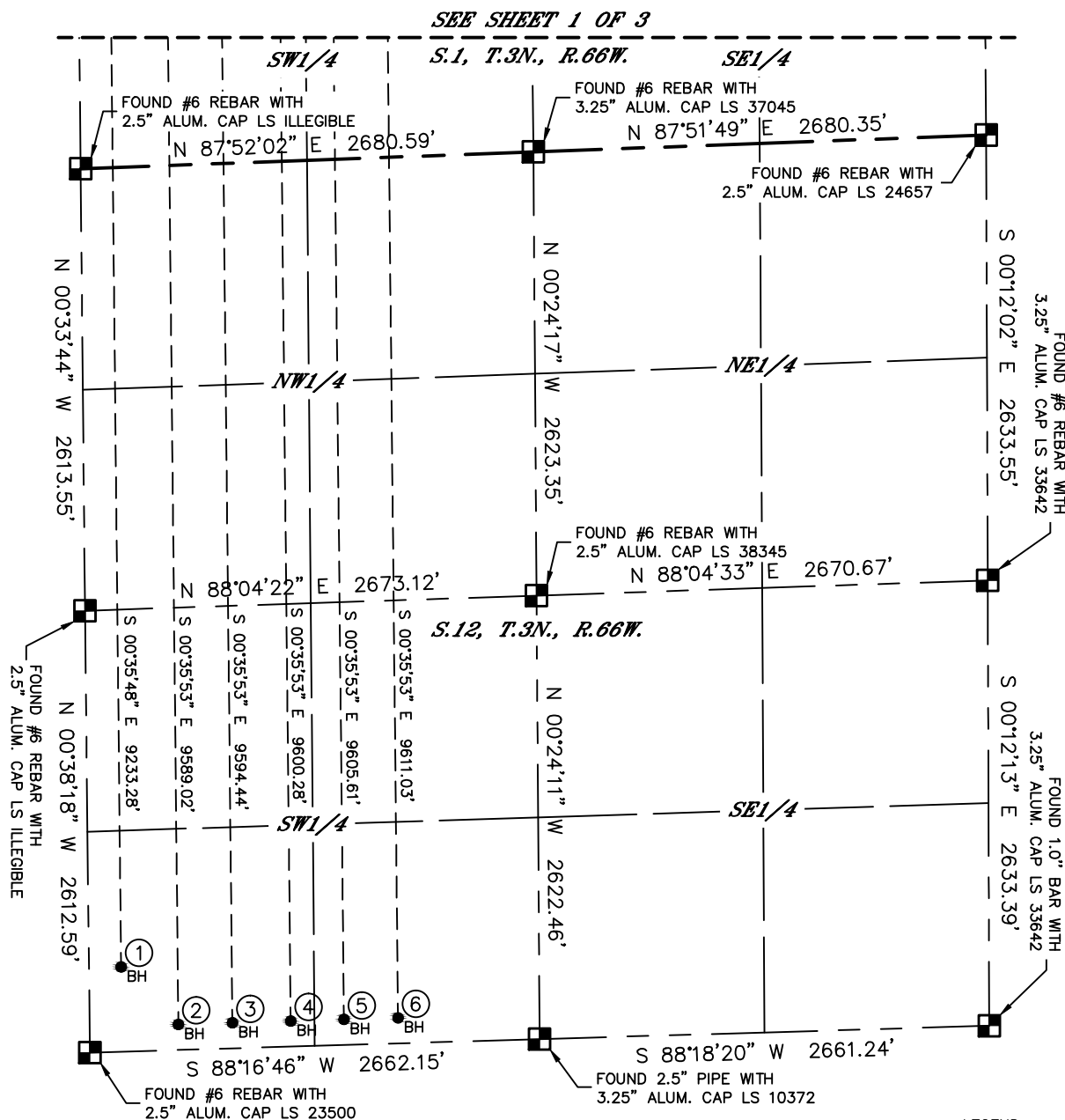
Lat40°, Inc. 6250 W. 10th Street, Unit 2, Greeley, CO 970-515-5294

MULTI-WELL PLAN

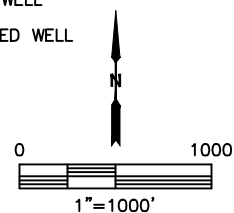
RIDGWAY 3N66W1 1-6 PAD

THIS MAP DOES NOT REPRESENT A BOUNDARY SURVEY

SECTION: 1
TOWNSHIP: 3N
RANGE: 66W
6TH. P.M.
WELD COUNTY, CO



#	WELL NAME	BHL FOOTAGE				BHL LAT °	BHL LONG °	BHL S-T-R
1	RIDGWAY 1N	500	FSL	190	FWL	40.23373	-104.73414	12-3-66
2	RIDGWAY 2N	150	FSL	525	FWL	40.23279	-104.73294	12-3-66
3	RIDGWAY 3N	150	FSL	845	FWL	40.23281	-104.73179	12-3-66
4	RIDGWAY 4N	150	FSL	1190	FWL	40.23283	-104.73056	12-3-66
5	RIDGWAY 5N	150	FSL	1505	FWL	40.23285	-104.72943	12-3-66
6	RIDGWAY 6N	150	FSL	1825	FWL	40.23287	-104.72828	12-3-66



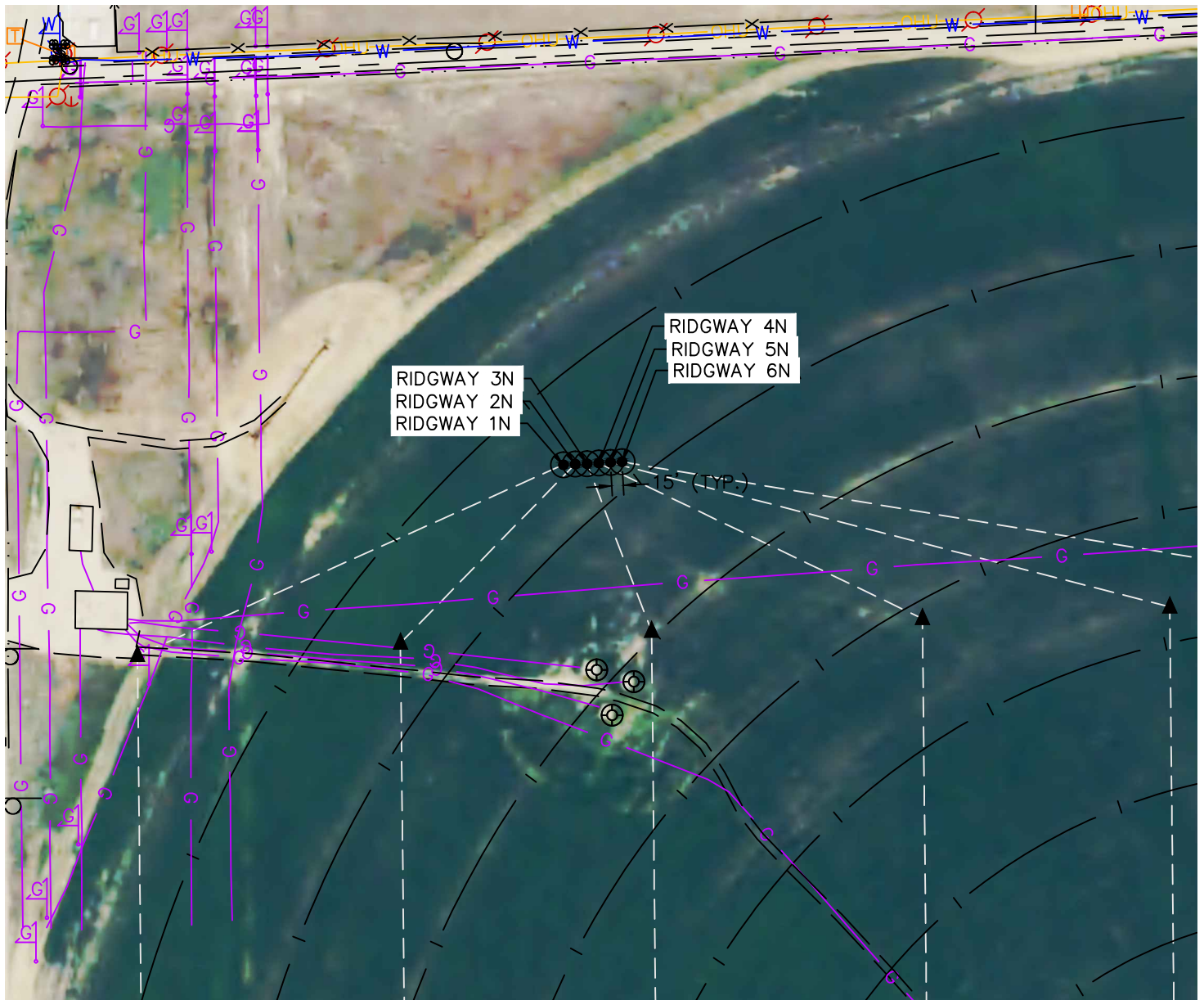


Lat40°, Inc. 6250 W. 10th Street, Unit 2, Greeley, CO 970-515-5294

MULTI-WELL PLAN

RIDGWAY 3N66W1 1-6 PAD

SECTION: 1
TOWNSHIP: 3N
RANGE: 66W
6TH. P.M.
WELD COUNTY, CO



#	WELL NAME	SHL FOOTAGE			SHL LAT °	SHL LONG °	SHL PDOP	SHL ELEV (FT.)	SHL 1/4/1/4	SHL S-T-R
1	RIDGWAY 1N	520	FNL	735 FWL	40.25973	-104.73225	2.4	4872	NWNNW	1-3-66
2	RIDGWAY 2N	520	FNL	750 FWL	40.25973	-104.73219	2.4	4872	NWNNW	1-3-66
3	RIDGWAY 3N	520	FNL	765 FWL	40.25973	-104.73214	2.4	4873	NWNNW	1-3-66
4	RIDGWAY 4N	520	FNL	780 FWL	40.25973	-104.73209	2.4	4873	NWNNW	1-3-66
5	RIDGWAY 5N	520	FNL	795 FWL	40.25973	-104.73203	2.4	4873	NWNNW	1-3-66
6	RIDGWAY 6N	520	FNL	810 FWL	40.25974	-104.73198	2.4	4873	NWNNW	1-3-66

