

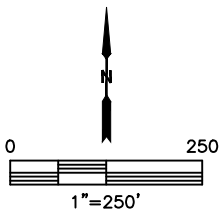
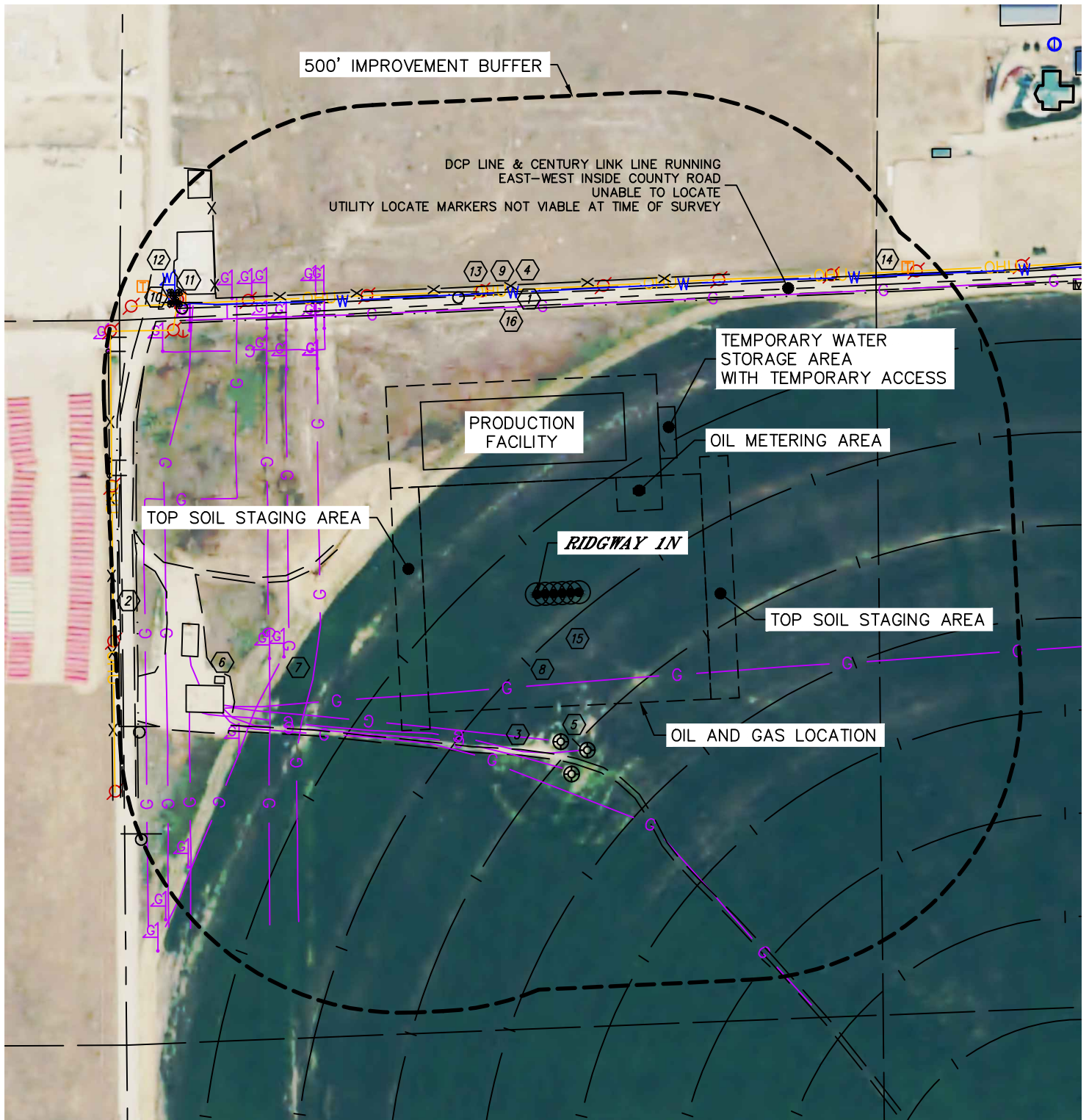


Lat40°, Inc. 6250 W. 10th Street, Unit 2, Greeley, CO 970-515-5294

LOCATION DRAWING

RIDGWAY 3N66W1 1-6 PAD

SECTION: 1
TOWNSHIP: 3N
RANGE: 66W
6TH. P.M.
WELD COUNTY, CO





Lat40°, Inc. 6250 W. 10th Street, Unit 2, Greeley, CO 970-515-5294

LOCATION DRAWING

RIDGWAY 3N66W1 1-6 PAD

SECTION: 1
TOWNSHIP: 3N
RANGE: 66W
6TH. P.M.
WELD COUNTY, CO

IMPROVEMENTS:
(MEASURED FROM THE PROPOSED RIDGWAY 1N WELL LOCATION)

- ① NO BUILDING UNITS WITHIN 500' IMPROVEMENT BUFFER
- ② NO BUILDINGS WITHIN 500' IMPROVEMENT BUFFER
- ③ COUNTY ROAD 38 512' N
- ④ COUNTY ROAD 35 715' W
- ⑤ ROAD 276' S, 362' NW, 563' SW
- ⑥ FENCE 550' N, 755' W
- ⑦ EXISTING WELL HEAD 264', 290' & 325' SE
- ⑧ EXISTING PRODUCTION FACILITY 572' & 578' SW, 601' W (KM/ANADARKO), 780' & 911' NW (DCP)
- ⑨ GAS MARKER 461', 487', 597' & 784' SW, 558', 597', 603', 611', 630', 639', 644', 661', 672', 714', 730', 753', 759', 791' & 872' NW
- ⑩ GAS LINE LOCATES $\pm 161'$ S, $\pm 254'$, $\pm 277'$, $\pm 286'$, $\pm 305'$ & $\pm 650'$ SW, $\pm 657'$ W, $\pm 574'$ NW (KM/ANAKDARKO), $\pm 385'$ W (ENTERPRISE). $\pm 440'$ & $\pm 695'$ W, $\pm 510'$ N (DCP), $\pm 476'$ W (WILLIAMS)
- ⑪ OVERHEAD UTILITY LINE 541' N, 751' W
- ⑫ TELEPHONE PEDESTAL 820' & 886' NW, 877' NE
- ⑬ FIRE HYDRANT 829' NW
- ⑭ WATER MARKER 830' NW
- ⑮ WATER LINE LOCATES $\pm 537'$ N
- ⑯ PIPE 825' NE
- ⑰ IRRIGATION PIVOT TRACK 75', 239', 404', 568' & 750' SE, 90' NW
- ⑱ BORROW DITCH 507' & 538' N, 709' & 742' W