



Lat40°, Inc. 6250 W. 10th Street, Unit 2, Greeley, CO 970-515-5294

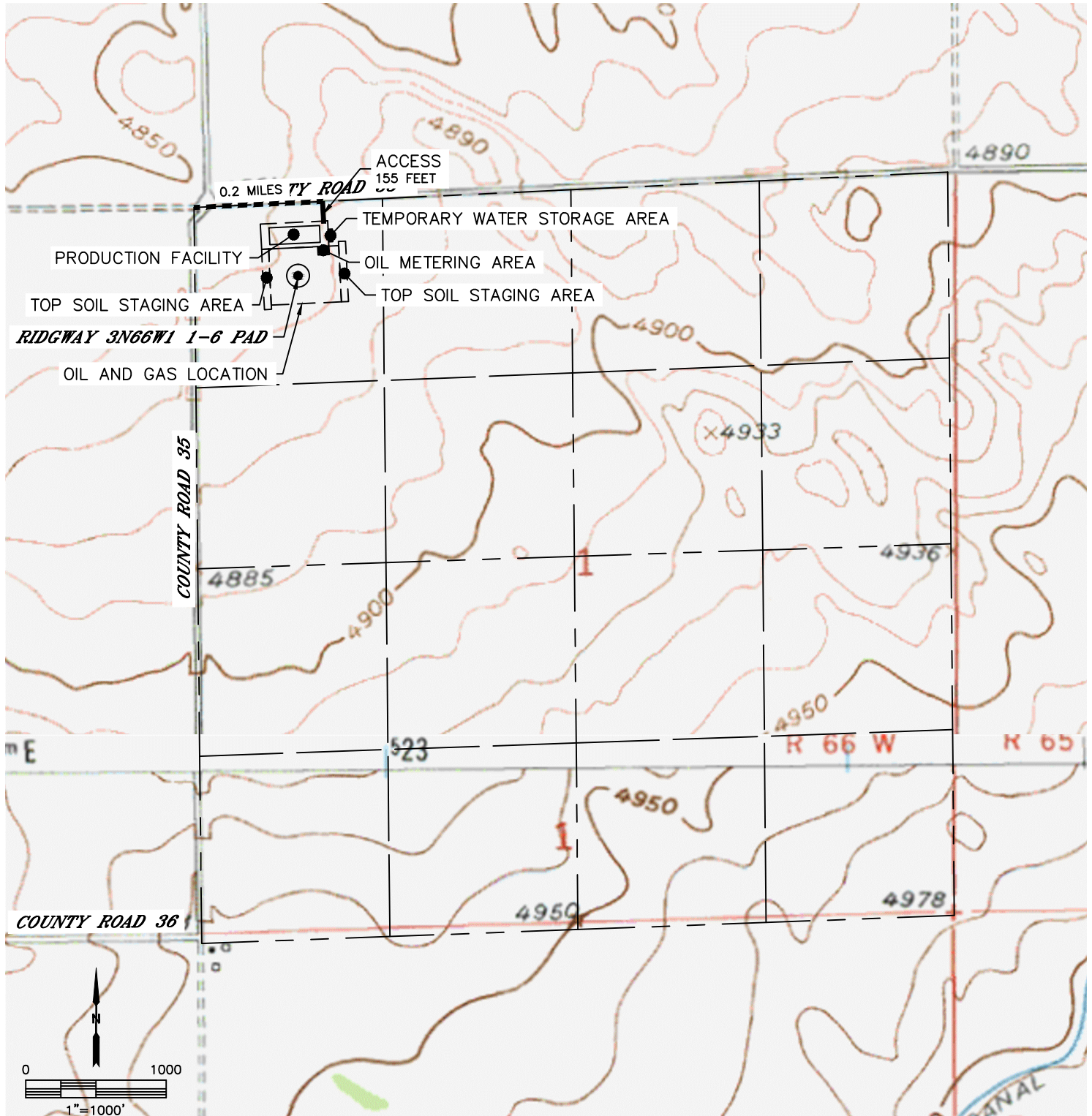
ACCESS ROAD MAP

RIDGWAY 3N66W1 1-6 PAD

SECTION: 1
TOWNSHIP: 3N
RANGE: 66W
6TH. P.M.
WELD COUNTY, CO

DRIVING DIRECTIONS TO RIDGWAY 3N66W1 1-6 PAD

FROM THE INTERSECTION OF COUNTY ROAD 35 AND COUNTY ROAD 38 GO EAST ON COUNTY ROAD 38 FOR 0.2 MILES TO A PROPOSED ACCESS TO THE SOUTH. THENCE SOUTH FOR 155 FEET TO THE PROPOSED DRILL PAD AND PRODUCTION FACILITY.





Lat40°, Inc. 6250 W. 10th Street, Unit 2, Greeley, CO 970-515-5294

ACCESS ROAD MAP

RIDGWAY 3N66W1 1-6 PAD

SECTION: 1
TOWNSHIP: 3N
RANGE: 66W
6TH. P.M.
WELD COUNTY, CO

