



Service Contract Receipt

SCHLUMBERGER TECHNOLOGY CORPORATION

Service Contract Number
D8WD-00781

Invoice Mailing Address: VERTEX ENERGY PARTNERS LLC 10701 MELODY DR, STE 515 NORTHGLENN CO 80234-4121 UNITED STATES		Left District	Date: 20-Nov-2017	Time: 11:00 AM
		Arrive Location	Date: 21-Nov-2017	Time: 12:30 AM
		Start Job	Date: 21-Nov-2017	Time: 4:00 AM
		Complete Job	Date: 21-Nov-2017	Time: 9:30 AM
		Leave Location	Date: 21-Nov-2017	Time: 10:30 AM
		Arrived District	Date: 21-Nov-2017	Time: 12:00 PM
		Service Description Cementing Primary, Production Casing		
Customer PO 1	Contract	Well Name & Number OXNARD EAST 3130-12CH		Field WILDCAT
AFE	Cust Ref	County / Parish / Block / Borough Weld		State / Province CO
Customer or Authorized Representative David Clarkson		Schlumberger Location Cheyenne, WY		Legal Location
API / UWI 05123456370000	Pricebook BBVI / WSV_GEOREF_NAL_2013_USD		Rig ENSIGN 145	
Service Instructions: Cement 5 1/2" casing @ 19,416 ft (9,209 ft) 8 1/2" hole, 15% Excess 40 bbl MUDPUSH Express Ahead Top of 12.5 ppg Lead: 1,300 ft Top of 13.5 ppg Tail: 8,300 ft Displace with KCl Water (provided by rig)				

THE ESTIMATED CHARGES AND DATA SHOWN BELOW ARE SUBJECT TO CORRECTION BY SCHLUMBERGER

Item	Description	Quantity	UOM	Price	Discount	Amount
Products						
B908	MUDPUSH* Express Water Based Spacer B908	40	BBL	203.600	77.00%	1,873.12
D020	Bentonite Extender	3644	LB	0.700	77.00%	586.68
D035-CF	LITEPOZ 3 Extender	1417.46	CF	12.000	77.00%	3,912.19
D047	Antifoam Agent	25	GA	82.800	77.00%	476.10
D065	TIC Dispersant	162	LB	9.100	77.00%	339.07
D066	Silica Flour	37790	LB	0.700	77.00%	6,084.19
D079	Chemical Extender	672	LB	3.600	77.00%	556.42
D208	ScavengerPlus D208	401	LB	80.000	77.00%	7,378.40
D255	Mid-Temperature FLAC D255	619	LB	38.500	77.00%	5,481.24
D800	Retarder	1500	LB	7.400	77.00%	2,553.00
D907	Cement, Class G	1433.3	CF	27.800	77.00%	9,164.52
F110	EZEFLO F110 Surfactant	40	GA	29.960	77.00%	275.63
U066	FREFLO EB Miscible Solvent	40	GA	30.130	77.00%	277.20

Products Subtotal: 169,381.56

Discount: 130,423.80

Products Total: 38,957.76

Services

59697004	Job Monitoring	1	JOB	880.00	75.00%	220.00
59200005	Car/PU Mileage	30	MI	3.47	75.00%	26.02
59200002	Equipment Mileage	150	MI	5.91	75.00%	221.62
49102000	Cement Transport	4202.79	MI	2.50	75.00%	2,626.75
49100000	Cement Service Charge	3460.69	CF	2.80	75.00%	2,422.48
48601000	Plug Container	1	JOB	640.00	75.00%	160.00
48019100	Cement Bulk Unit	2	EA	1,380.00	75.00%	690.00
48021000	Cement Silo	4	EA	915.00	75.00%	915.00
102871170	Pump, Casing Cement 16501-17000 ft	1	EA	23,257.00	75.00%	5,814.25
102871999	Pump, Casing Cement >17000 ft per 500 ft	5	EA	1,329.00	75.00%	1,661.25
102476000	Service Supervisor/Field Engineer	2	HR	56.18	50.00%	56.18
102476001	Equipment Operator/Service Technician	6	HR	45.48	50.00%	136.44
48019000	Cement Bulk Unit, Add Hr	4	HR	173.00	50.00%	346.00
48020000	Pump, Cement Add Hr	2	HR	915.00	50.00%	915.00



Service Contract Receipt
SCHLUMBERGER TECHNOLOGY CORPORATION

Service Contract Number
D8WD-00781

Invoice Mailing Address: VERTEX ENERGY PARTNERS LLC 10701 MELODY DR, STE 515 NORTHGLENN 80234-4121 CO UNITED STATES		Left District	Date: 20-Nov-2017	Time: 11:00 AM
		Arrive Location	Date: 21-Nov-2017	Time: 12:30 AM
		Start Job	Date: 21-Nov-2017	Time: 4:00 AM
		Complete Job	Date: 21-Nov-2017	Time: 4:00 AM
		Leave Location	Date: 21-Nov-2017	Time: 10:30 AM
		Arrived District	Date: 21-Nov-2017	Time: 12:00 PM
Customer PO 1		Contract		Service Description Cementing Primary, Production Casing
Customer or Authorized Representative David Clarkson		Well Name & Number OXNARD EAST 3130-12CH		Field WILDCAT
API / UWI 05123456370000		County / Parish / Block / Borough Weld		State / Province CO
Pricebook BBVI / WSV_GEOREF_NAL_2013_USD		Schlumberger Location Cheyenne, WY		Legal Location
Rig ENSIGN 145				
Service Instructions: Cement 5 1/2" casing @ 19,416 ft (9,209 ft) 8 1/2" hole, 15% Excess 40 bbl MUDPUSH Express Ahead Top of 12.5 ppg Lead: 1,300 ft Top of 13.5 ppg Tail: 8,300 ft Displace with KCl Water (provided by rig)				

Services Subtotal: 61,936.75
Discount: 45,725.76
Services Total: 16,210.99

Total (Before Discount):	231,318.31		
Discount:	176,149.56		
Special Discount:	0.00	Estimated Total (USD):	55,168.75

Oxnard East 3130-12CH
AFE# 170831
Code Desc: CEMENT RIG Casing
Chrg Code: 840 - 110
Sign/Date: 11-21-17

Estimated Total (USD): 55,168.75

THE ESTIMATED CHARGES AND DATA SHOWN ABOVE ARE SUBJECT TO CORRECTION BY SCHLUMBERGER.

THE SERVICES, EQUIPMENT, MATERIALS AND/OR PRODUCTS COVERED BY THIS FIELD TICKET HAVE BEEN PERFORMED OR RECEIVED AS SET FORTH ABOVE AND PROVIDED AT THE PRICES SHOWN HEREIN PURSUANT TO THE MASTER SERVICE AGREEMENT ("MSA") BETWEEN CUSTOMER AND SCHLUMBERGER AND, IN THE ABSENCE OF AN ACTIVE MSA, PURSUANT TO THE SCHLUMBERGER GENERAL TERMS AND CONDITIONS.

Signature of Customer or Authorized Representative:

Signature Not Verified

Signed by David Clarkson
11/21/2017
09:57:31

David Clarkson

Date

Signature of Schlumberger Representative:

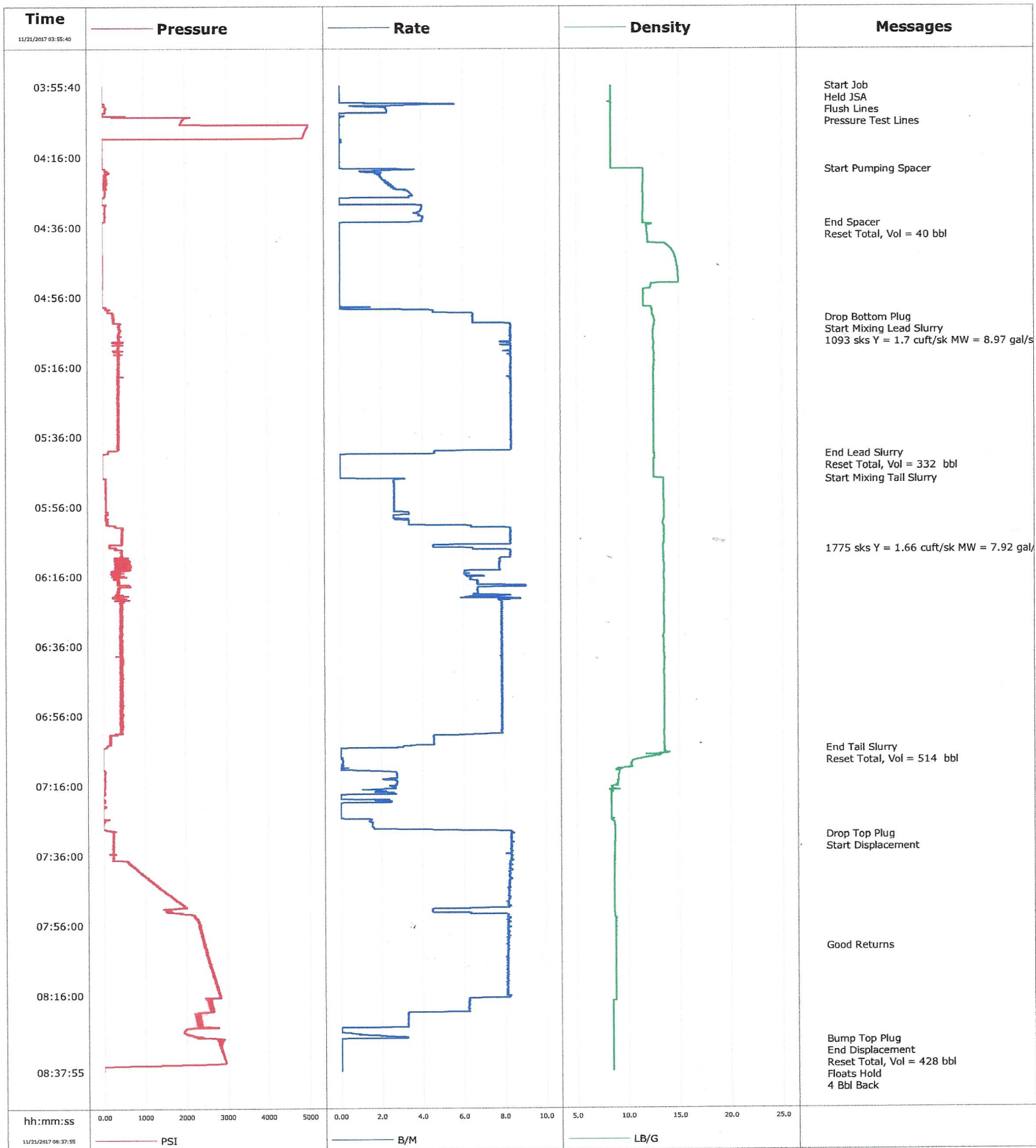
Signature Not Verified

Signed by Ryan Call
11/21/2017
09:58:18

Ryan Call

Date

Well	Oxnard East 3130-12CH	Client	Vertex Energy
Field	Wildcat	SIR No.	D8WD-00781
Engineer	Ryan Call	Job Type	5.5" Production
Country	United States	Job Date	11-21-2017





Cementing Service Report

				Customer Vertex Energy				Job Number D8WD-00781															
Well Oxnard East 3130-12CH				Location (legal) Ensign 140				Schlumberger Location CWY				Job Start Nov/21/2017											
Field Wildcat				Formation Name/Type				Deviation deg		Bit Size 8.5 in		Well MD 19328.0 ft		Well TVD 9209.0 ft									
County				State/Province CO				BHP psi		BHST 240 degF		BHCT 230 degF		Pore Press. Gradient lb/gal									
Well Master 0631740576				API/UWI																			
Rig Name Ensign 145		Drilled For Oil & Gas		Service Via Land		Casing/Liner																	
						Depth, ft		Size, in		Weight, lb/ft		Grade		Thread									
Offshore Zone		Well Class New		Well Type Development		2600.0		9.6		36.0		J-55											
						19328.0		5.5		20.0		P-110											
Drilling Fluid Type				Max. Density lb/gal		Plastic Viscosity cP		Tubing/Drill Pipe															
								T/D		Depth, ft		Size, in		Weight, lb/ft		Grade		Thread					
Service Line Cementing				Job Type 5.5" Production																			
Max. Allowed Tub. Press psi				Max. Allowed Ann. Press psi				WH Connection Cement Head				Perforations/Open Hole											
												Top, ft		Bottom, ft		shot/ft		No. of Shots		Total Interval ft			
												ft		ft						Diameter in			
												ft		ft									
Service Instructions Cement 5 1/2" casing @ 19,416 ft (9,209 ft) 8 1/2" hole, 15% Excess 40 bbl MUDPUSH Express Ahead Top of 12.5 ppg Lead: 1,300 ft Top of 13.5 ppg Tail: 8,300 ft Displace with KCI Water (provided by rig)								Treat Down				Displacement bbl				Packer Type				Packer Depth ft			
								Tubing Vol. bbl				Casing Vol. bbl				Annular Vol. bbl				Openhole Vol. bbl			
Casing/Tubing Secured <input type="checkbox"/>				1 Hole Vol. Circulated prior to Cement <input type="checkbox"/>				Casing Tools				Squeeze Job											
Lift Pressure psi				Shoe Type Float				Squeeze Type															
Pipe Rotated <input type="checkbox"/>				Pipe Reciprocated <input type="checkbox"/>				Shoe Depth 19328.0 ft				Tool Type											
No. Centralizers				Top Plugs 1				Bottom Plugs 1				Stage Tool Type				Tool Depth ft							
Cement Head Type Double				Stage Tool Depth ft				Tail Pipe Size in															
Job Scheduled For Nov/21/2017 00:30				Arrived on Location Nov/21/2017 00:30				Leave Location Nov/21/2017 10:30				Collar Type Float				Tail Pipe Depth ft							
												Collar Depth 19275.0 ft				Sqz. Total Vol. bbl							
Date	Time 24-hr clock	Treating Pressure PSI	Flow Rate B/M	Density LB/G	Volume BBL	Message																	
11/21/2017	03:55:40	-17	0.0	8.36	0.0	Started Acquisition																	
11/21/2017	03:55:44	-17	0.0	8.36	0.0	Start Job																	
11/21/2017	03:55:45	-17	0.0	8.36	0.0	Held JSA																	
11/21/2017	03:56:00	-17	0.0	8.36	0.0	Pressure Test Lines																	
11/21/2017	03:57:40	-20	0.0	8.36	0.0																		
11/21/2017	03:59:40	-20	0.0	8.36	0.0																		
11/21/2017	04:01:40	54	1.3	8.37	3.1																		
11/21/2017	04:03:40	1	0.0	8.36	7.0																		
11/21/2017	04:05:40	1930	0.0	8.36	7.0																		
11/21/2017	04:07:40	4966	0.0	8.36	7.0																		
11/21/2017	04:09:40	4885	0.0	8.36	7.0																		
11/21/2017	04:11:40	-15	0.1	8.37	7.1																		
11/21/2017	04:13:40	-12	0.0	8.36	7.1																		
11/21/2017	04:15:40	-13	0.0	8.36	7.1																		
11/21/2017	04:17:40	-12	0.0	8.36	7.2																		
11/21/2017	04:19:36	54	3.6	11.53	7.7	Start Pumping Spacer																	
11/21/2017	04:19:40	56	3.2	11.52	8.0																		
11/21/2017	04:21:40	91	2.0	11.51	1.1																		
11/21/2017	04:23:40	45	2.5	11.51	5.4																		
11/21/2017	04:25:40	60	3.3	11.49	10.8																		
11/21/2017	04:27:40	-19	0.3	11.52	17.5																		

Well			Field	Job Start		Customer	Job Number
Oxnard East 3130-12CH			Wildcat	Nov/21/2017		Vertex Energy	D8WD-00781
Date	Time 24-hr clock	Treating Pressure PSI	Flow Rate B/M	Density LB/G	Volume BBL	Message	
11/21/2017	04:31:40	53	3.9	11.51	25.9		
11/21/2017	04:33:40	58	4.0	11.50	33.7		
11/21/2017	04:34:55	-21	0.0	11.48	37.4	End Spacer	
11/21/2017	04:34:58	-19	0.0	11.48	37.4	Reset Total, Vol = 40 bbl	
11/21/2017	04:35:40	-16	0.0	11.82	37.4		
11/21/2017	04:37:40	-15	0.0	11.89	37.4		
11/21/2017	04:39:40	-14	0.0	11.97	37.4		
11/21/2017	04:41:40	-16	0.0	13.97	37.4		
11/21/2017	04:43:40	-13	0.0	14.48	37.4		
11/21/2017	04:45:40	-11	0.0	14.70	37.4		
11/21/2017	04:47:40	-11	0.0	14.82	37.4		
11/21/2017	04:49:40	-12	0.0	14.89	37.4		
11/21/2017	04:51:40	-12	0.0	14.93	37.4		
11/21/2017	04:53:40	-12	0.0	12.21	37.4		
11/21/2017	04:55:40	-14	0.0	11.53	37.4		
11/21/2017	04:57:40	-14	0.0	11.52	37.4		
11/21/2017	04:59:40	94	3.2	12.37	38.0		
11/21/2017	05:01:40	244	6.4	12.46	49.0		
11/21/2017	05:02:06	259	6.5	12.53	51.8	Drop Bottom Plug	
11/21/2017	05:02:08	247	6.5	12.53	52.0	Start Mixing Lead Slurry	
11/21/2017	05:02:28	255	6.5	12.57	54.1	1093 sks Y = 1.7 cuft/sk MW = 8.97 gal/sk	
11/21/2017	05:03:40	396	8.3	12.59	62.1		
11/21/2017	05:05:40	423	8.3	12.46	78.7		
11/21/2017	05:07:40	379	8.3	12.43	95.3		
11/21/2017	05:09:40	387	8.3	12.51	111.7		
11/21/2017	05:11:40	398	8.2	12.53	128.2		
11/21/2017	05:13:40	377	8.3	12.55	144.8		
11/21/2017	05:15:40	378	8.3	12.52	161.4		
11/21/2017	05:17:40	385	8.3	12.50	177.9		
11/21/2017	05:19:40	365	8.3	12.49	194.5		
11/21/2017	05:21:40	386	8.3	12.51	211.1		
11/21/2017	05:23:40	388	8.3	12.51	227.7		
11/21/2017	05:27:40	369	8.3	12.50	260.9		
11/21/2017	05:29:40	375	8.3	12.50	277.5		
11/21/2017	05:31:40	371	8.3	12.49	294.1		
11/21/2017	05:33:40	363	8.3	12.50	310.7		
11/21/2017	05:35:40	366	8.3	12.49	327.3		
11/21/2017	05:37:40	371	8.3	12.50	343.9		
11/21/2017	05:39:40	374	8.3	12.50	360.6		
11/21/2017	05:41:05	-21	2.3	12.54	368.8	End Lead Slurry	
11/21/2017	05:41:07	-21	0.9	12.59	368.9	Reset Total, Vol = 332 bbl	
11/21/2017	05:41:40	-21	0.0	12.59	369.0		
11/21/2017	05:43:40	-18	0.0	12.51	369.0		
11/21/2017	05:45:40	-19	0.0	12.51	369.0		
11/21/2017	05:47:40	-19	0.0	12.51	369.0		
11/21/2017	05:48:16	64	3.1	13.43	369.5	Start Mixing Tail Slurry	
11/21/2017	05:49:40	60	2.6	13.44	373.2		
11/21/2017	05:51:40	60	2.6	13.45	378.5		
11/21/2017	05:53:40	61	2.6	13.46	383.7		
11/21/2017	05:55:40	62	2.6	13.48	389.0		
11/21/2017	05:57:40	71	3.1	13.48	394.3		
11/21/2017	05:59:40	106	3.3	13.47	400.1		
11/21/2017	06:01:40	311	6.3	13.44	407.2		
11/21/2017	06:03:40	462	8.3	13.47	422.9		

Well			Field		Job Start		Customer		Job Number	
Oxnard East 3130-12CH			Wildcat		Nov/21/2017		Vertex Energy		D8WD-00781	
Date	Time 24-hr clock	Treating Pressure PSI	Flow Rate B/M	Density LB/G	Volume BBL	Message				
11/21/2017	06:07:40	154	4.5	13.38	453.7					
11/21/2017	06:08:27	444	8.0	13.41	458.3	1775 sks Y = 1.66 cuft/sk MW = 7.92 gal/sk				
11/21/2017	06:09:40	453	8.3	13.41	468.4					
11/21/2017	06:11:40	407	7.7	13.43	484.5					
11/21/2017	06:13:40	585	7.7	13.49	499.9					
11/21/2017	06:15:40	379	6.1	13.46	513.5					
11/21/2017	06:17:40	347	6.7	13.51	526.3					
11/21/2017	06:19:40	387	6.7	13.50	540.9					
11/21/2017	06:21:40	467	8.3	13.45	554.5					
11/21/2017	06:23:40	431	7.8	13.46	569.7					
11/21/2017	06:25:40	459	7.8	13.45	585.4					
11/21/2017	06:27:40	458	7.8	13.47	601.1					
11/21/2017	06:29:40	419	7.8	13.48	616.7					
11/21/2017	06:31:40	454	7.8	13.48	632.4					
11/21/2017	06:33:40	435	7.8	13.36	648.1					
11/21/2017	06:37:40	423	7.8	13.46	679.4					
11/21/2017	06:39:40	441	7.8	13.54	695.1					
11/21/2017	06:41:40	453	7.8	13.48	710.8					
11/21/2017	06:43:40	441	7.8	13.46	726.4					
11/21/2017	06:45:40	407	7.8	13.47	742.1					
11/21/2017	06:47:40	407	7.8	13.49	757.8					
11/21/2017	06:49:40	416	7.9	13.49	773.5					
11/21/2017	06:51:40	433	7.9	13.49	789.2					
11/21/2017	06:53:40	430	7.8	13.49	804.8					
11/21/2017	06:55:40	443	7.8	13.50	820.5					
11/21/2017	06:57:40	412	7.8	13.50	836.2					
11/21/2017	06:59:40	452	7.8	13.49	851.9					
11/21/2017	07:01:40	173	4.6	13.44	867.0					
11/21/2017	07:03:40	169	4.5	13.48	876.0					
11/21/2017	07:05:27	-23	0.0	13.50	882.5	End Tail Slurry				
11/21/2017	07:05:29	-23	0.0	13.50	882.5	Reset Total, Vol = 514 bbl				
11/21/2017	07:05:40	-22	0.0	13.50	882.5					
11/21/2017	07:07:40	-17	0.0	13.03	882.5					
11/21/2017	07:09:40	-21	0.1	10.29	882.7					
11/21/2017	07:11:40	-21	0.0	9.14	882.8					
11/21/2017	07:13:40	34	2.7	9.00	887.7					
11/21/2017	07:15:40	31	2.7	8.90	892.9					
11/21/2017	07:17:40	7	1.8	8.37	897.6					
11/21/2017	07:19:40	-21	0.0	8.33	899.7					
11/21/2017	07:21:40	-18	0.0	8.32	901.8					
11/21/2017	07:23:40	-21	0.0	8.32	901.8					
11/21/2017	07:25:40	46	1.5	8.53	902.0					
11/21/2017	07:27:40	-13	1.5	8.64	905.0					
11/21/2017	07:29:40	236	8.4	8.65	913.7					
11/21/2017	07:30:18	241	8.3	8.65	918.9	Drop Top Plug				
11/21/2017	07:30:19	231	8.3	8.65	919.1	Start Displacement				
11/21/2017	07:31:40	227	8.3	8.65	930.3					
11/21/2017	07:33:40	228	8.3	8.62	946.8					
11/21/2017	07:35:40	294	8.0	8.59	963.4					
11/21/2017	07:37:40	571	8.3	8.59	979.9					
11/21/2017	07:39:40	756	8.2	8.58	996.4					
11/21/2017	07:41:40	963	8.2	8.57	1012.8					
11/21/2017	07:43:40	1185	8.2	8.57	1029.3					
11/21/2017	07:45:40	1399	8.2	8.56	1045.5					

Well			Field	Job Start	Customer	Job Number
Oxnard East 3130-12CH			Wildcat	Nov/21/2017	Vertex Energy	D8WD-00781
Date	Time 24-hr clock	Treating Pressure PSI	Flow Rate B/M	Density LB/G	Volume BBL	Message
11/21/2017	07:49:40	1837	8.1	8.56	1078.2	
11/21/2017	07:51:40	1574	4.4	8.55	1093.1	
11/21/2017	07:53:40	2202	8.1	8.62	1105.5	
11/21/2017	07:55:40	2311	8.1	8.72	1121.8	
11/21/2017	07:57:40	2339	8.1	8.72	1138.0	
11/21/2017	07:59:40	2394	8.1	8.72	1154.3	
11/21/2017	08:01:40	2440	8.1	8.72	1170.5	
11/21/2017	08:02:14	2446	8.1	8.71	1175.1	Good Returns
11/21/2017	08:03:40	2477	8.1	8.71	1186.7	
11/21/2017	08:05:40	2523	8.1	8.71	1202.8	
11/21/2017	08:07:40	2582	8.1	8.70	1219.0	
11/21/2017	08:09:40	2628	8.1	8.70	1235.2	
11/21/2017	08:11:40	2680	8.1	8.70	1251.4	
11/21/2017	08:13:40	2742	8.1	8.70	1267.5	
11/21/2017	08:15:40	2790	8.1	8.69	1283.7	
11/21/2017	08:17:40	2580	6.2	8.69	1298.5	
11/21/2017	08:19:40	2546	6.2	8.41	1310.9	
11/21/2017	08:21:40	2261	3.2	8.40	1321.5	
11/21/2017	08:23:40	2300	3.2	8.40	1328.0	
11/21/2017	08:25:40	2078	0.0	8.40	1333.7	
11/21/2017	08:27:40	2164	1.6	8.41	1334.2	
11/21/2017	08:29:12	2765	0.0	8.41	1336.7	Bump Top Plug
11/21/2017	08:29:13	2754	0.0	8.41	1336.7	End Displacement
11/21/2017	08:29:15	2758	0.0	8.41	1336.7	Reset Total, Vol = 428 bbl
11/21/2017	08:29:40	2776	0.0	8.41	1336.7	
11/21/2017	08:31:40	2847	0.0	8.41	1336.7	
11/21/2017	08:33:40	2900	0.0	8.41	1336.7	
11/21/2017	08:35:40	2924	0.0	8.41	1336.7	
11/21/2017	08:37:00	-19	0.0	8.41	1336.7	Floats Hold

Post Job Summary

Average Pump Rates, bbl/min					Volume of Fluid Injected, bbl					
Slurry	N2	Mud	Maximum Rate	Total Slurry	Mud	Spacer	N2			
5.6			9.0	860.0	0.0	40.0				
Treating Pressure Summary, psi					Breakdown Fluid					
Maximum	Final	Average	Bump Plug to	Breakdown	Type	Volume	Density			
5031	-17	903				bbl	lb/gal			
Avg. N2 Percent	Designed Slurry Volume		Displacement	Mix Water Temp	Cement Circulated to Surface?		Volume			
%	0.0 bbl		428.0 bbl	60 degF	<input type="checkbox"/>		bbl			
						Washed Thru Perfs		To		
						<input type="checkbox"/>		ft		
Customer or Authorized Representative			Schlumberger Supervisor			Circulation Lost		Job Completed		
			Ryan Call			<input type="checkbox"/>		<input checked="" type="checkbox"/>		
						-		-		