

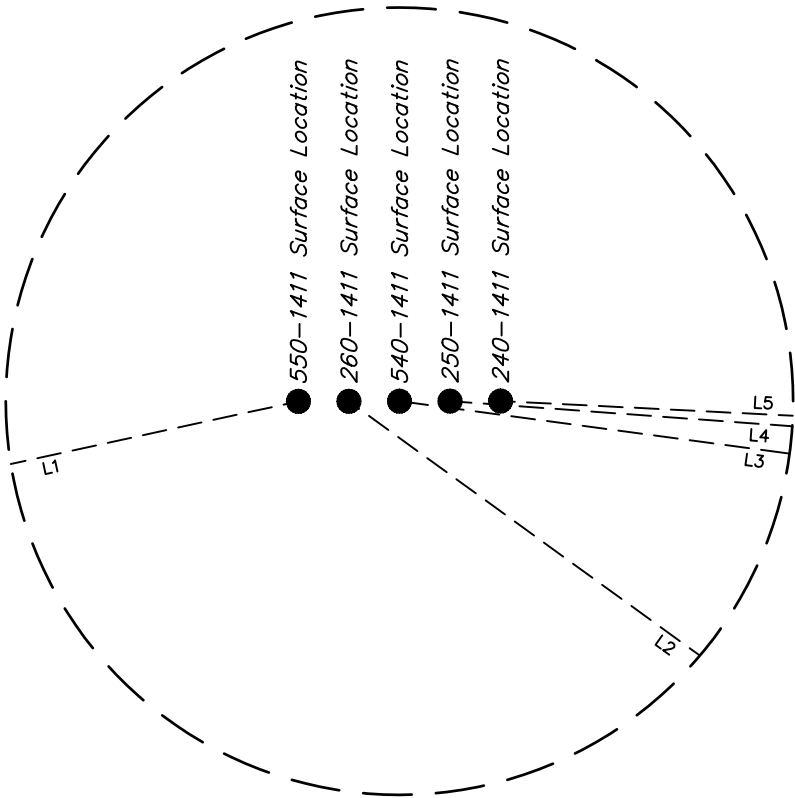


WELL	SHL FOOTAGES	SECTION	TOWNSHIP	RANGE
550-1411H	382' FSL 710' FWL	14	11N	63W
260-1411H	382' FSL 725' FWL	14	11N	63W
540-1411H	382' FSL 740' FWL	14	11N	63W
250-1411H	382' FSL 755' FWL	14	11N	63W
240-1411H	382' FSL 770' FWL	14	11N	63W

WELL	LP FOOTAGES	SECTION	TOWNSHIP	RANGE
550-1411H	300' FSL 330' FWL	14	11N	63W
260-1411H	300' FSL 838' FWL	14	11N	63W
540-1411H	300' FSL 1345' FWL	14	11N	63W
250-1411H	300' FSL 1852' FWL	14	11N	63W
240-1411H	300' FSL 2360' FWL	14	11N	63W

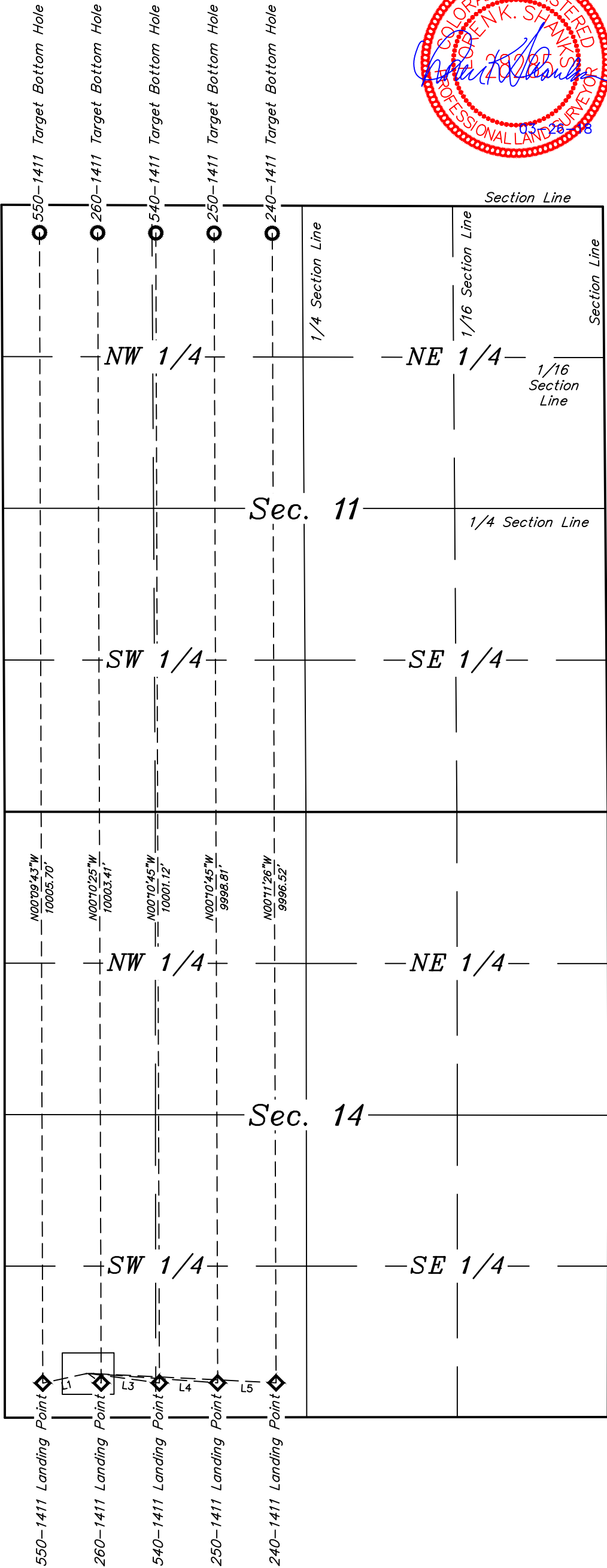
WELL	BHL FOOTAGES	SECTION	TOWNSHIP	RANGE
550-1411H	240' FNL 330' FWL	11	11N	63W
260-1411H	240' FNL 836' FWL	11	11N	63W
540-1411H	240' FNL 1342' FWL	11	11N	63W
250-1411H	240' FNL 1849' FWL	11	11N	63W
240-1411H	240' FNL 2355' FWL	11	11N	63W

LINE TABLE		
LINE	DIRECTION	LENGTH
L1	S77°42'57"W	388.76'
L2	S54°04'26"E	139.71'
L3	S82°21'14"E	610.56'
L4	S85°48'12"E	1100.09'
L5	S87°07'42"E	1592.13'



- LEGEND:**
- = PROPOSED WELLHEAD.
 - ◆ = LANDING POINT
 - = TARGET BOTTOM HOLE.

NOTES:



REV: 3 03-23-18 C.C. (SHL CHANGE)

BILL BARRETT CORPORATION

CRITTER CREEK 14 SW
SW 1/4 SW 1/4, SECTION 14, T11N, R63W, 6th P.M.
WELD COUNTY, COLORADO

SURVEYED BY	CHAD MEIERS, J.B.	12-22-17	SCALE
DRAWN BY	T.L.L.	01-03-18	1" = 1000'
MULTI-WELL PLAN			FIGURE #5



UELS, LLC
Corporate Office * 85 South 200 East
Vernal, UT 84078 * (435) 789-1017