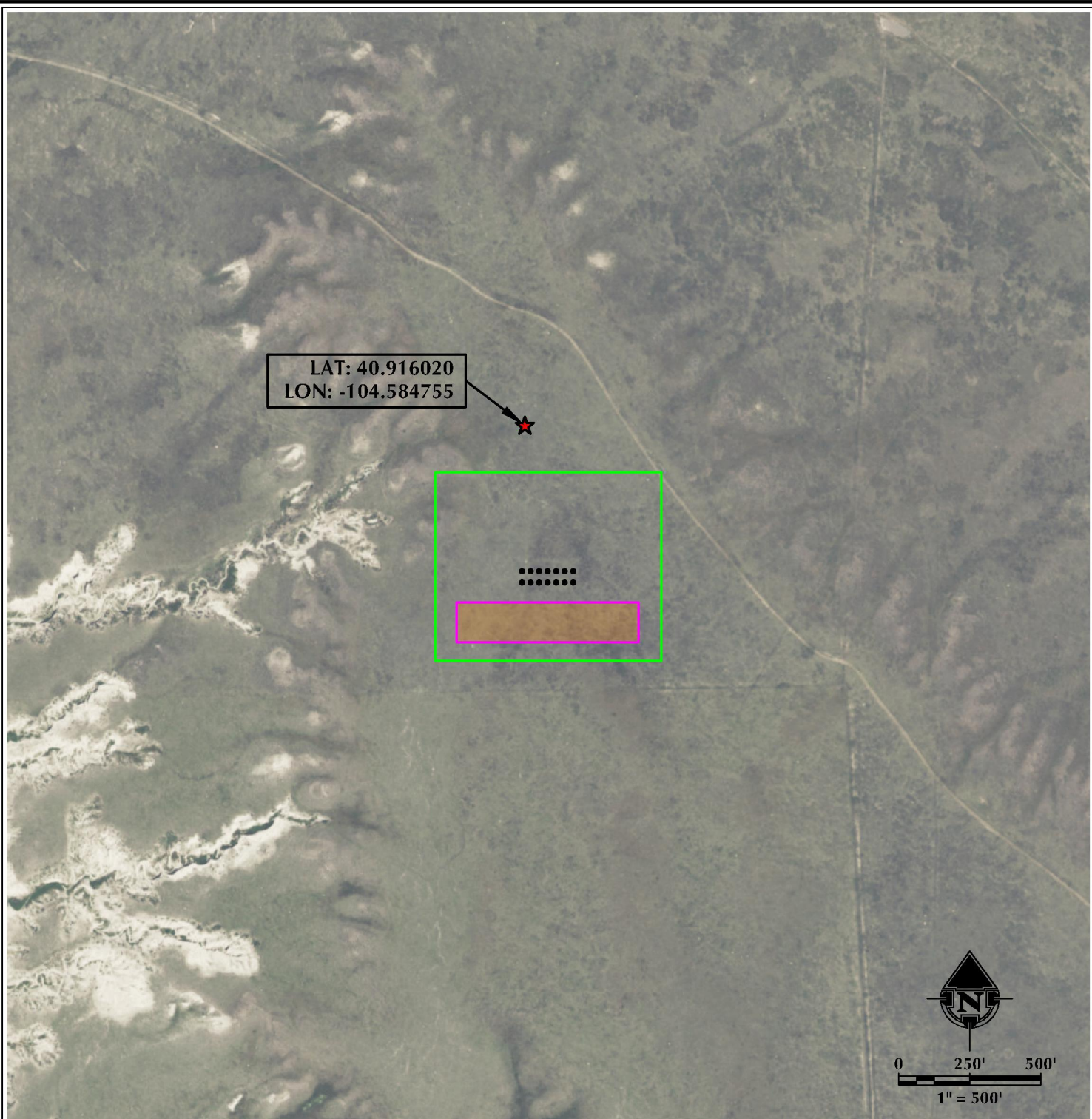


R:\CDP\2017_12\10\GIS\1807\SALT RANCH FEE 1807.DWG, 3/6/2018 4:13:22 PM, eleven



LEGEND

- REFERENCE POINT
- PROPOSED WELL
- DISTURBANCE AREA
- PROPOSED FACILITY
- PUBLIC ROAD

PAD - SALT RANCH FEE 18 EAST

REFERENCE AREA MAP
SALT RANCH FEE 204-1807H, SALT RANCH FEE 503-1807H,
SALT RANCH FEE 203-1807H, SALT RANCH FEE 502-1807H,
SALT RANCH FEE 202-1807H, SALT RANCH FEE 501-1807H,
SALT RANCH FEE 201-1807H, SALT RANCH FEE 204-1830H,
SALT RANCH FEE 503-1830H, SALT RANCH FEE 203-1830H,
SALT RANCH FEE 502-1830H, SALT RANCH FEE 202-1830H,
SALT RANCH FEE 501-1830H & SALT RANCH FEE 201-1830H
LOCATED IN SECTION 18, T11N, R64W, 6TH P.M.
WELD COUNTY, COLORADO



CLEAR CREEK
Resource Partners

717 17th Street, Suite 1525
Denver, Colorado 80202



CONSULTING, LLC

SHERIDAN OFFICE
1095 Saberton Avenue
Sheridan, Wyoming 82801
Phone 307-674-0609

LOVELAND OFFICE
1635 Foxtrail Drive, Suite 204
Loveland, Colorado 80538
Phone 970-776-4331

SCALE:	1" = 500ft	NAD83 CO-Nft
DRAWN:	SRS	DATE: 10/17/17
REVISED:	GLK	DATE: 3/6/18