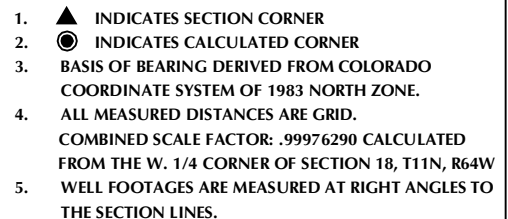


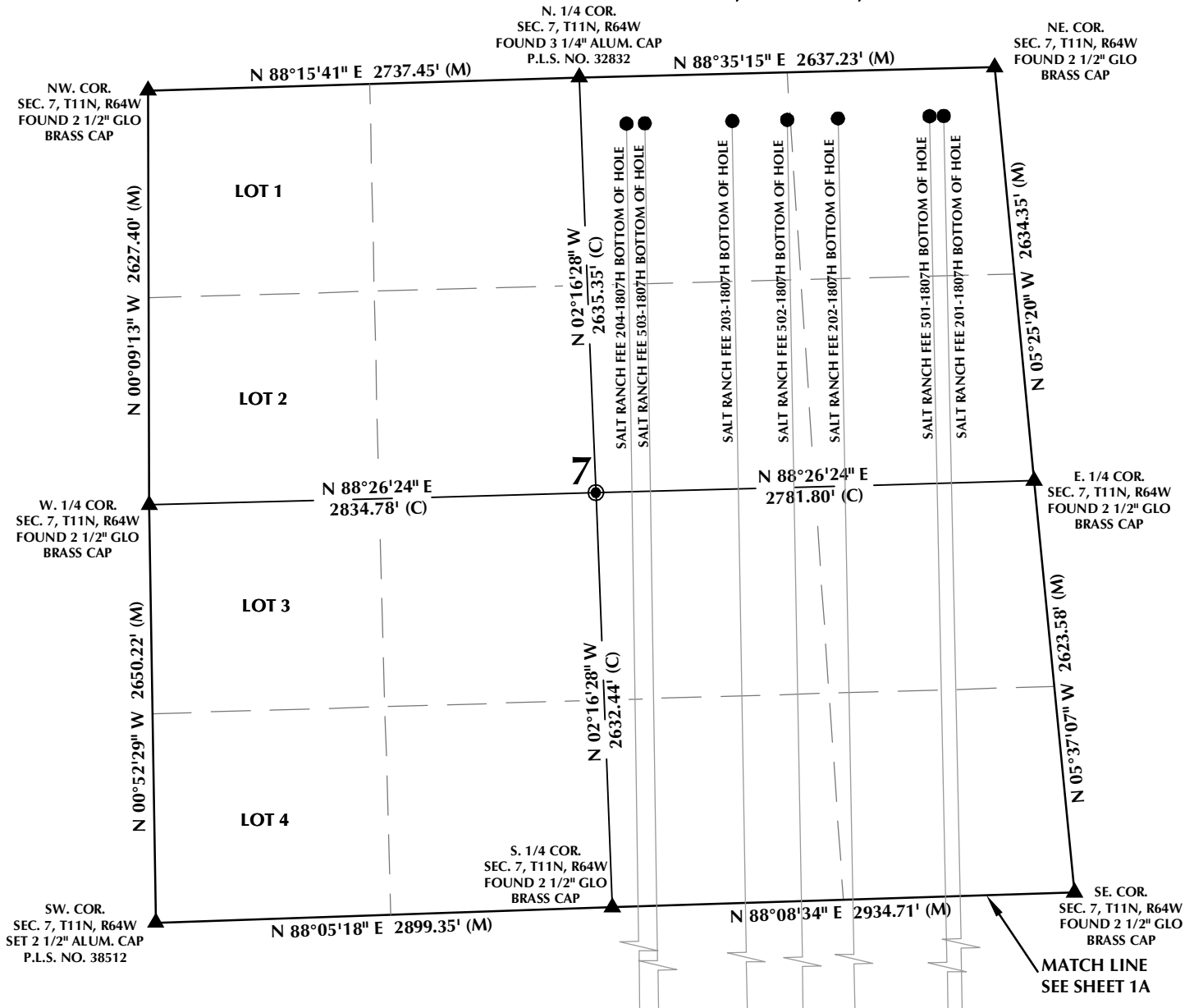
**MATCH LINE
/SEE SHEET 1B**



DRAFTED BY: MDB	CHECKED BY: RKF
DATE DRAFTED: 3/2/18	DATE SURVEYED: 2/14/18
REVISED:	FILE NAME: 17-127

SHEET NO:
1A
1A OF 1

MULTI-WELL PLAN SECTION 7, T11N, R64W



WELL NOTES:

SALT RANCH FEE 204-1807H
SURFACE: 369' FSL, 1157' FEL, SEC. 18
BOTTOM HOLE: 300' FNL, 2360' FEL, SEC. 7

SALT RANCH FEE 503-1807H
SURFACE: 368' FSL, 1127' FEL, SEC. 18
BOTTOM HOLE: 300' FNL, 2244' FEL, SEC. 7

SALT RANCH FEE 203-1807H
SURFACE: 367' FSL, 1098' FEL, SEC. 18
BOTTOM HOLE: 300' FNL, 1690' FEL, SEC. 7

SALT RANCH FEE 502-1807H
SURFACE: 366' FSL, 1068' FEL, SEC. 18
BOTTOM HOLE: 300' FNL, 1342' FEL, SEC. 7

SALT RANCH FEE 202-1807H
SURFACE: 365' FSL, 1038' FEL, SEC. 18
BOTTOM HOLE: 300' FNL, 1020' FEL, SEC. 7

SALT RANCH FEE 501-1807H
SURFACE: 364' FSL, 1008' FEL, SEC. 18
BOTTOM HOLE: 300' FNL, 440' FEL, SEC. 7

SALT RANCH FEE 201-1807H
SURFACE: 363' FSL, 978' FEL, SEC. 18
BOTTOM HOLE: 300' FNL, 350' FEL, SEC. 7

SALT RANCH FEE 204-1830H

SURFACE: 329' FSL, 1155' FEL, SEC. 18
BOTTOM HOLE: 300' FSL, 2499' FEL, SEC. 30

SALT RANCH FEE 503-1830H
SURFACE: 328' FSL, 1125' FEL, SEC. 18
BOTTOM HOLE: 300' FSL, 2374' FEL, SEC. 30

SALT RANCH FEE 203-1830H
SURFACE: 327' FSL, 1095' FEL, SEC. 18
BOTTOM HOLE: 300' FSL, 1783' FEL, SEC. 30

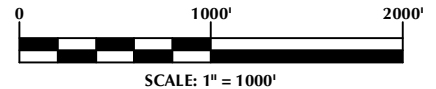
SALT RANCH FEE 502-1830H
SURFACE: 326' FSL, 1065' FEL, SEC. 18
BOTTOM HOLE: 300' FSL, 1407' FEL, SEC. 30

SALT RANCH FEE 202-1830H
SURFACE: 325' FSL, 1035' FEL, SEC. 18
BOTTOM HOLE: 300' FSL, 1066' FEL, SEC. 30

SALT RANCH FEE 501-1830H
SURFACE: 324' FSL, 1005' FEL, SEC. 18
BOTTOM HOLE: 300' FSL, 440' FEL, SEC. 30

SALT RANCH FEE 201-1830H
SURFACE: 323' FSL, 975' FEL, SEC. 18
BOTTOM HOLE: 300' FSL, 350' FEL, SEC. 30

GRID



NOTES:

- ▲ INDICATES SECTION CORNER
- INDICATES CALCULATED CORNER
- BASIS OF BEARING DERIVED FROM COLORADO COORDINATE SYSTEM OF 1983 NORTH ZONE.
- ALL MEASURED DISTANCES ARE GRID.
- COMBINED SCALE FACTOR: .99976290 CALCULATED FROM THE W. 1/4 CORNER OF SECTION 18, T11N, R64W
- WELL FOOTAGES ARE MEASURED AT RIGHT ANGLES TO THE SECTION LINES.

WELL PAD - SALT RANCH FEE 18 EAST

MULTI-WELL PLAN
SALT RANCH FEE 204-1807H, SALT RANCH FEE 503-1807H,
SALT RANCH FEE 203-1807H, SALT RANCH FEE 502-1807H,
SALT RANCH FEE 202-1807H, SALT RANCH FEE 501-1807H,
SALT RANCH FEE 201-1807H, SALT RANCH FEE 204-1830H,
SALT RANCH FEE 503-1830H, SALT RANCH FEE 203-1830H,
SALT RANCH FEE 502-1830H, SALT RANCH FEE 202-1830H,
SALT RANCH FEE 501-1830H & SALT RANCH FEE 201-1830H
LOCATED IN SECTIONS 7, 18, 19 & 30
T11N, R64W, 6TH P.M.
WELD COUNTY, COLORADO



CLEAR CREEK
Resource Partners

717 17th Street, Suite 1525
Denver, Colorado 80202



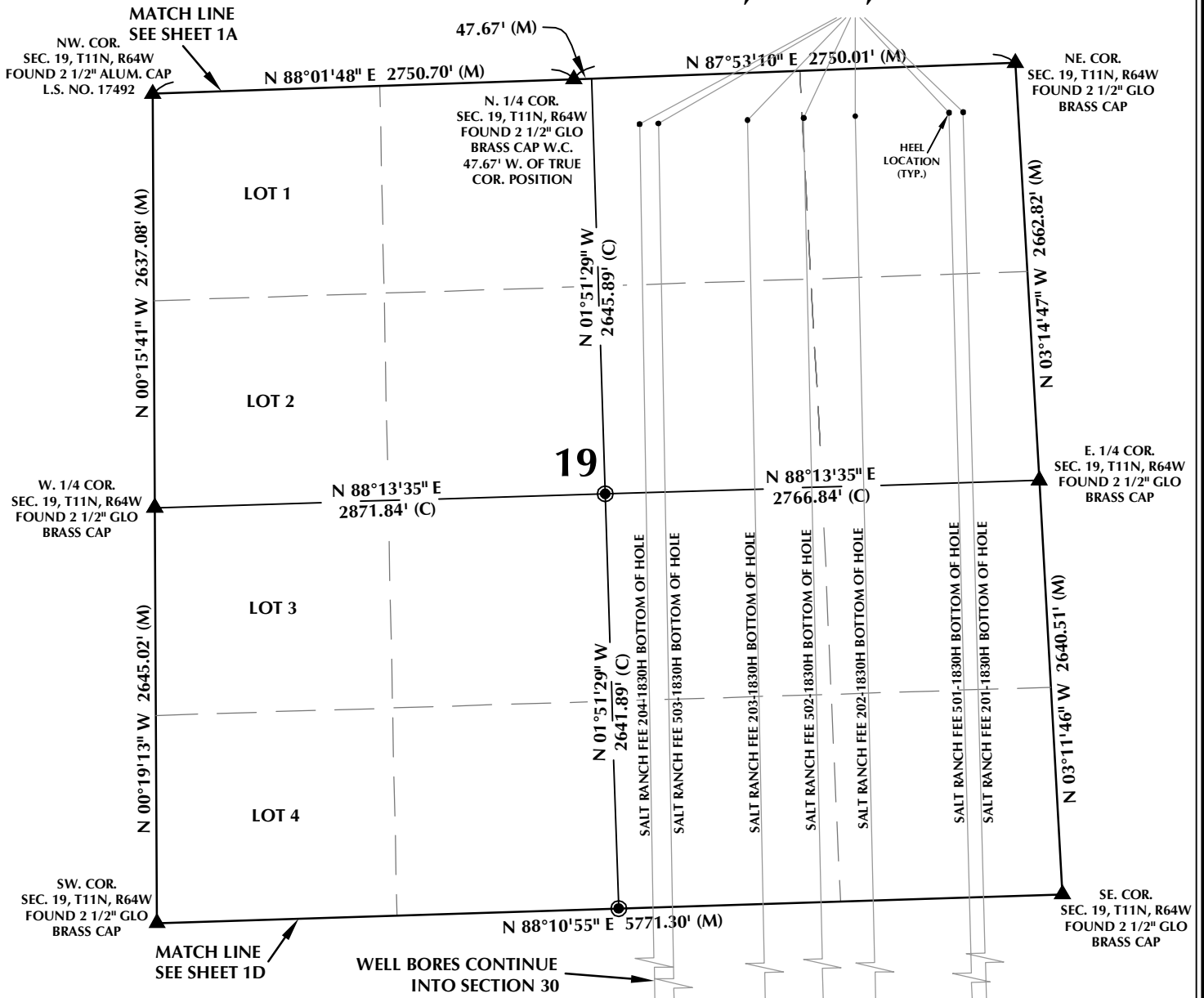
CONSULTING, LLC

SHERIDAN OFFICE
1095 Saberton Avenue
Sheridan, Wyoming 82801
Phone 307-674-0609

LOVELAND OFFICE
1635 Foxtrail Drive, Suite 204
Loveland, Colorado 80538
Phone 970-776-4331

DRAFTED BY:	MDB	CHECKED BY:	RKF	SHEET NO:
DATE DRAFTED:	3/2/18	DATE SURVEYED:	2/14/18	1B
REVISED:		FILE NAME:	17-127	1B OF 1

MULTI-WELL PLAN SECTION 19, T11N, R64W



WELL NOTES:

SALT RANCH FEE 204-1807H
SURFACE: 369' FSL, 1157' FEL, SEC. 18
BOTTOM HOLE: 300' FNL, 2360' FEL, SEC. 7
SALT RANCH FEE 503-1807H
SURFACE: 368' FSL, 1127' FEL, SEC. 18
BOTTOM HOLE: 300' FNL, 2244' FEL, SEC. 7
SALT RANCH FEE 203-1807H
SURFACE: 367' FSL, 1098' FEL, SEC. 18
BOTTOM HOLE: 300' FNL, 1690' FEL, SEC. 7
SALT RANCH FEE 502-1807H
SURFACE: 366' FSL, 1068' FEL, SEC. 18
BOTTOM HOLE: 300' FNL, 1342' FEL, SEC. 7
SALT RANCH FEE 202-1807H
SURFACE: 365' FSL, 1038' FEL, SEC. 18
BOTTOM HOLE: 300' FNL, 1020' FEL, SEC. 7
SALT RANCH FEE 501-1807H
SURFACE: 364' FSL, 1008' FEL, SEC. 18
BOTTOM HOLE: 300' FNL, 440' FEL, SEC. 7
SALT RANCH FEE 201-1807H
SURFACE: 363' FSL, 978' FEL, SEC. 18
BOTTOM HOLE: 300' FNL, 350' FEL, SEC. 7

SALT RANCH FEE 204-1830H

SURFACE: 329' FSL, 1155' FEL, SEC. 18
BOTTOM HOLE: 300' FSL, 2499' FEL, SEC. 30
SALT RANCH FEE 503-1830H
SURFACE: 328' FSL, 1125' FEL, SEC. 18
BOTTOM HOLE: 300' FSL, 2374' FEL, SEC. 30
SALT RANCH FEE 203-1830H
SURFACE: 327' FSL, 1095' FEL, SEC. 18
BOTTOM HOLE: 300' FSL, 1783' FEL, SEC. 30
SALT RANCH FEE 502-1830H
SURFACE: 326' FSL, 1065' FEL, SEC. 18
BOTTOM HOLE: 300' FSL, 1407' FEL, SEC. 30
SALT RANCH FEE 202-1830H
SURFACE: 325' FSL, 1035' FEL, SEC. 18
BOTTOM HOLE: 300' FSL, 1066' FEL, SEC. 30
SALT RANCH FEE 501-1830H
SURFACE: 324' FSL, 1005' FEL, SEC. 18
BOTTOM HOLE: 300' FSL, 440' FEL, SEC. 30
SALT RANCH FEE 201-1830H
SURFACE: 323' FSL, 975' FEL, SEC. 18
BOTTOM HOLE: 300' FSL, 350' FEL, SEC. 30

NOTES:

- ▲ INDICATES SECTION CORNER
- INDICATES CALCULATED CORNER
- BASIS OF BEARING DERIVED FROM COLORADO COORDINATE SYSTEM OF 1983 NORTH ZONE.
- ALL MEASURED DISTANCES ARE GRID.
- COMBINED SCALE FACTOR: .99976290 CALCULATED FROM THE W. 1/4 CORNER OF SECTION 18, T11N, R64W
- WELL FOOTAGES ARE MEASURED AT RIGHT ANGLES TO THE SECTION LINES.

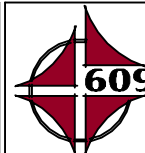
WELL PAD - SALT RANCH FEE 18 EAST

MULTI-WELL PLAN
SALT RANCH FEE 204-1807H, SALT RANCH FEE 503-1807H,
SALT RANCH FEE 203-1807H, SALT RANCH FEE 502-1807H,
SALT RANCH FEE 202-1807H, SALT RANCH FEE 501-1807H,
SALT RANCH FEE 201-1807H, SALT RANCH FEE 204-1830H,
SALT RANCH FEE 503-1830H, SALT RANCH FEE 203-1830H,
SALT RANCH FEE 502-1830H, SALT RANCH FEE 202-1830H,
SALT RANCH FEE 501-1830H & SALT RANCH FEE 201-1830H
LOCATED IN SECTIONS 7, 18, 19 & 30
T11N, R64W, 6TH P.M.
WELD COUNTY, COLORADO



CLEAR CREEK
Resource Partners

717 17th Street, Suite 1525
Denver, Colorado 80202



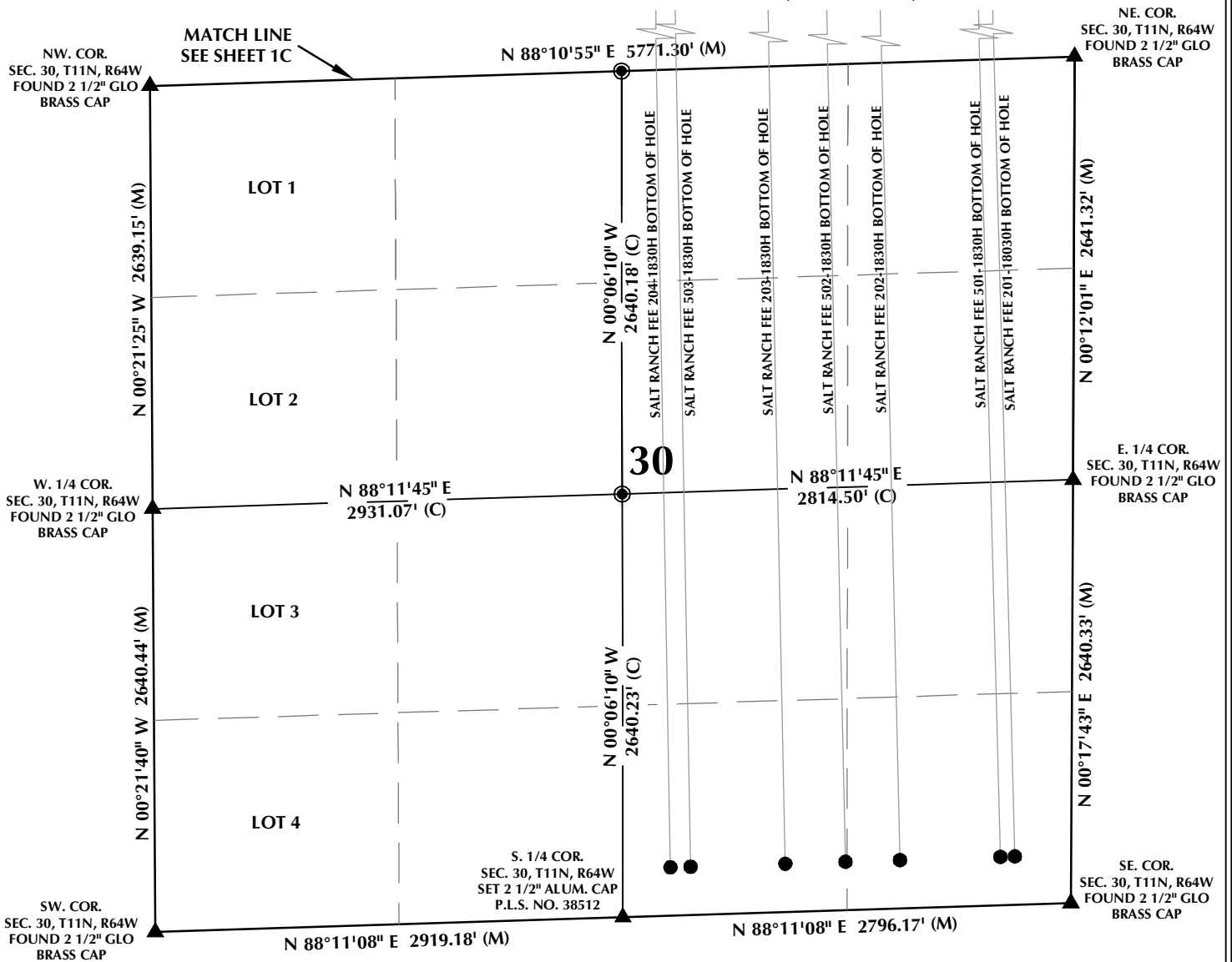
CONSULTING, LLC

SHERIDAN OFFICE
1095 Saberton Avenue
Sheridan, Wyoming 82801
Phone 307-674-0609

LOVELAND OFFICE
1635 Foxtrail Drive, Suite 204
Loveland, Colorado 80538
Phone 970-776-4331

DRAFTED BY:	MDB	CHECKED BY:	RKF	SHEET NO:
DATE DRAFTED:	3/2/18	DATE SURVEYED:	2/14/18	1C
REVISED:		FILE NAME:	17-127	1C OF 1

MULTI-WELL PLAN SECTION 30, T11N, R64W

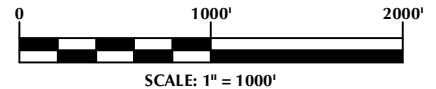


WELL NOTES:

SALT RANCH FEE 204-1807H
SURFACE: 369' FSL, 1157' FEL, SEC. 18
BOTTOM HOLE: 300' FNL, 2360' FEL, SEC. 7
SALT RANCH FEE 503-1807H
SURFACE: 368' FSL, 1127' FEL, SEC. 18
BOTTOM HOLE: 300' FNL, 2244' FEL, SEC. 7
SALT RANCH FEE 203-1807H
SURFACE: 367' FSL, 1098' FEL, SEC. 18
BOTTOM HOLE: 300' FNL, 1690' FEL, SEC. 7
SALT RANCH FEE 502-1807H
SURFACE: 366' FSL, 1068' FEL, SEC. 18
BOTTOM HOLE: 300' FNL, 1342' FEL, SEC. 7
SALT RANCH FEE 202-1807H
SURFACE: 365' FSL, 1038' FEL, SEC. 18
BOTTOM HOLE: 300' FNL, 1020' FEL, SEC. 7
SALT RANCH FEE 501-1807H
SURFACE: 364' FSL, 1008' FEL, SEC. 18
BOTTOM HOLE: 300' FNL, 440' FEL, SEC. 7
SALT RANCH FEE 201-1807H
SURFACE: 363' FSL, 978' FEL, SEC. 18
BOTTOM HOLE: 300' FNL, 350' FEL, SEC. 7

SALT RANCH FEE 204-1830H
SURFACE: 329' FSL, 1155' FEL, SEC. 18
BOTTOM HOLE: 300' FSL, 2499' FEL, SEC. 30
SALT RANCH FEE 503-1830H
SURFACE: 328' FSL, 1125' FEL, SEC. 18
BOTTOM HOLE: 300' FSL, 2374' FEL, SEC. 30
SALT RANCH FEE 203-1830H
SURFACE: 327' FSL, 1095' FEL, SEC. 18
BOTTOM HOLE: 300' FSL, 1783' FEL, SEC. 30
SALT RANCH FEE 502-1830H
SURFACE: 326' FSL, 1065' FEL, SEC. 18
BOTTOM HOLE: 300' FSL, 1407' FEL, SEC. 30
SALT RANCH FEE 202-1830H
SURFACE: 325' FSL, 1035' FEL, SEC. 18
BOTTOM HOLE: 300' FSL, 1066' FEL, SEC. 30
SALT RANCH FEE 501-1830H
SURFACE: 324' FSL, 1005' FEL, SEC. 18
BOTTOM HOLE: 300' FSL, 440' FEL, SEC. 30
SALT RANCH FEE 201-1830H
SURFACE: 323' FSL, 975' FEL, SEC. 18
BOTTOM HOLE: 300' FSL, 350' FEL, SEC. 30

GRID



NOTES:

- ▲ INDICATES SECTION CORNER
- INDICATES CALCULATED CORNER
- BASIS OF BEARING DERIVED FROM COLORADO COORDINATE SYSTEM OF 1983 NORTH ZONE.
- ALL MEASURED DISTANCES ARE GRID.
- COMBINED SCALE FACTOR: .99976290 CALCULATED FROM THE W. 1/4 CORNER OF SECTION 18, T11N, R64W
- WELL FOOTAGES ARE MEASURED AT RIGHT ANGLES TO THE SECTION LINES.

WELL PAD - SALT RANCH FEE 18 EAST

MULTI-WELL PLAN
SALT RANCH FEE 204-1807H, SALT RANCH FEE 503-1807H,
SALT RANCH FEE 203-1807H, SALT RANCH FEE 502-1807H,
SALT RANCH FEE 202-1807H, SALT RANCH FEE 501-1807H,
SALT RANCH FEE 201-1807H, SALT RANCH FEE 204-1830H,
SALT RANCH FEE 503-1830H, SALT RANCH FEE 203-1830H,
SALT RANCH FEE 502-1830H, SALT RANCH FEE 202-1830H,
SALT RANCH FEE 501-1830H & SALT RANCH FEE 201-1830H
LOCATED IN SECTIONS 7, 18, 19 & 30
T11N, R64W, 6TH P.M.
WELD COUNTY, COLORADO



CLEAR CREEK
Resource Partners

717 17th Street, Suite 1525
Denver, Colorado 80202



CONSULTING, LLC

SHERIDAN OFFICE
1095 Saberton Avenue
Sheridan, Wyoming 82801
Phone 307-674-0609

LOVELAND OFFICE
1635 Foxtrail Drive, Suite 204
Loveland, Colorado 80538
Phone 970-776-4331

DRAFTED BY:	MDB	CHECKED BY:	RKF	SHEET NO:
DATE DRAFTED:	3/2/18	DATE SURVEYED:	2/14/18	1D
REVISED:		FILE NAME:	17-127	1D OF 1