

2/15/2018

Hand Delivered

PDC Energy, Inc.
Attn: Rachel Lenox
1775 Sherman Street, Suite 3000
Denver, CO 80203

RE: **Statewide Fracture Stimulation Setback Waiver – COGCC Rule 317(s)**
SLW Ranch State BB07-668 Horizontal Well
Township 5 North, Range 63 West, 6th P.M.
5N-63W-7: N2; 8: N2; 9: W2NW; 5N-64W-12: E2NE
Weld County, Colorado

Dear Megan:

Noble Energy Inc. ("Noble") plans to drill the **SLW Ranch State BB07-668 Horizontal Well** (the "Well"), with a wellbore lateral as depicted on the enclosed plat.

Our records indicate that PDC Energy, Inc. operates the following well(s) which are located within 150' from our proposed horizontal wellbore lateral:

SKURICH/SLW 7D (05-123-20499) – located 47 feet from the proposed subject well
STATE 5519 8D (05-123-20504) – located 4 feet from the proposed subject well

Colorado Oil and Gas Conservation Commission ("COGCC") Rule 317(s) provides that no portion of a proposed wellbore's treated interval shall be located less than one hundred fifty (150') feet from any existing or permitted oil or gas wellbore, but this requirement may be waived in writing by the operator of the encroached upon well.

Noble respectfully requests that PDC Energy, Inc. waive this requirement and allow Noble to drill the Well as proposed. Accordingly, by executing this letter, PDC Energy, Inc. waives COGCC Rule 317(s) and grants its consent to allow Noble to drill the Well within the 150' minimum intra-well distance provided for in said rule. If you have any questions or need any additional information, please call me at (303) 228-4261.

Very truly yours,
NOBLE ENERGY, INC.

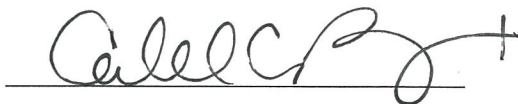


Pete McElwain
Staff Landman

Enclosures

PDC Energy, Inc.

By:



Printed Name:

Caleb A. Ring
Non-OP Engineer

Title:

Date:

03/21/2018

SLW Ranch State BB07-668

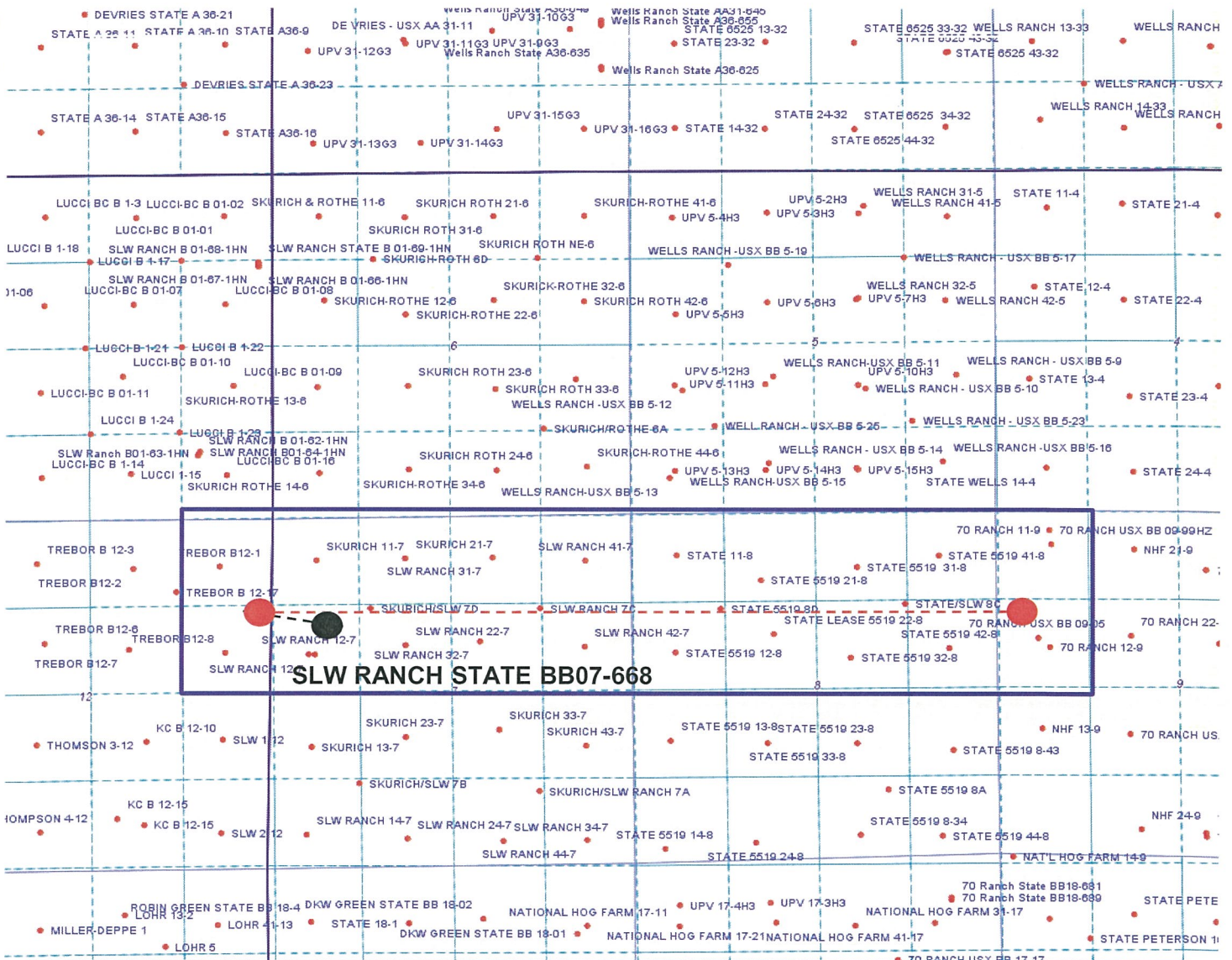
Proposed Spacing Unit – Noble Energy, Inc

E/2NE/4 Section 12, Township 5 North, Range 64 West

N/2 Section 7, Township 5 North, Range 63 West

N/2 Section 8, Township 5 North, Range 63 West

W/2NW/4 Section 9, Township 5 North, Range 63 West



Legend



Proposed 795.40± acre spacing unit



Bottom Hole Location

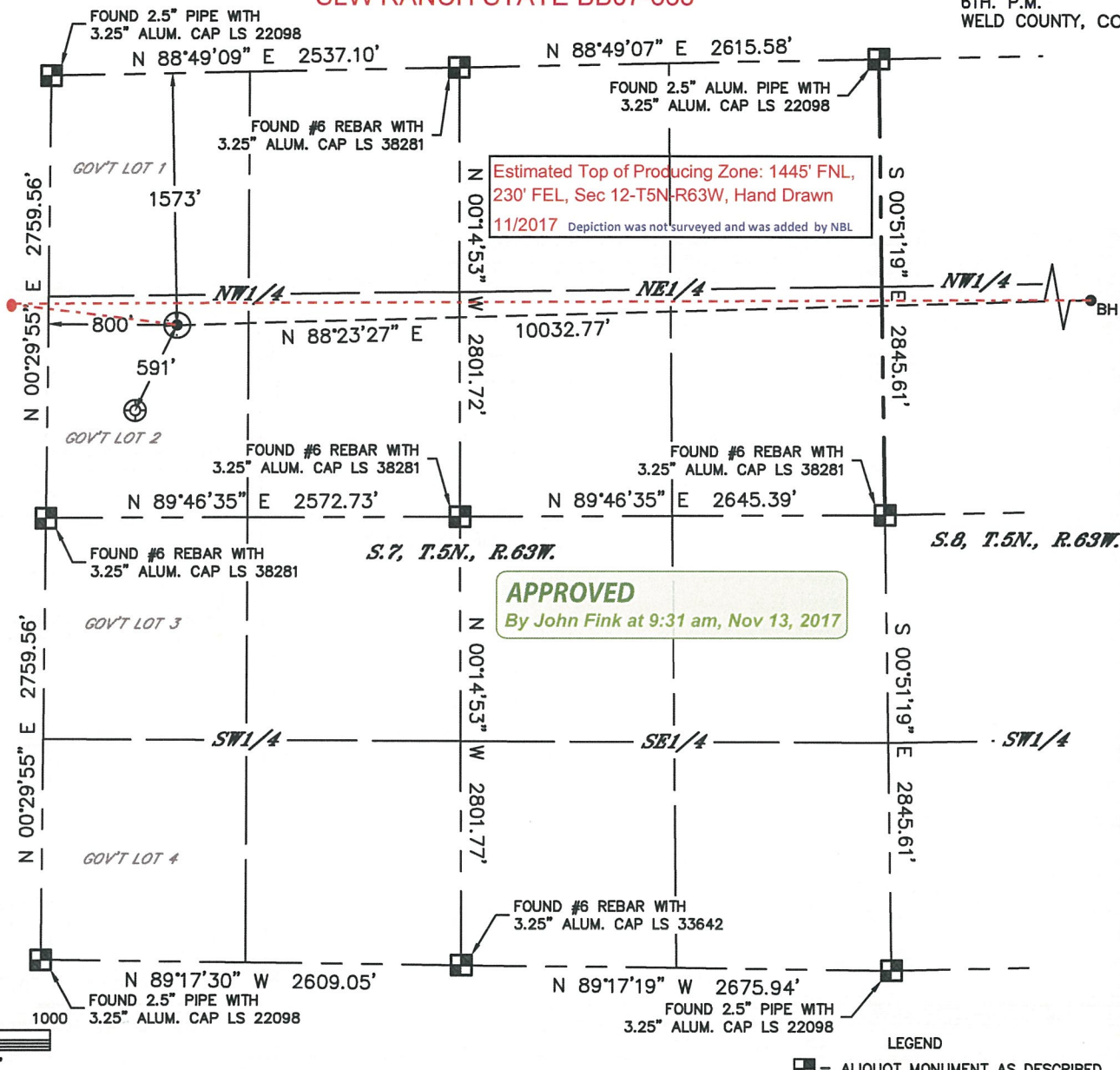


Lat40°, Inc. 6250 W. 10th Street, Unit 2, Greeley, CO 970-515-5294

WELL LOCATION CERTIFICATE

SLW RANCH STATE BB07-668

SECTION: 7
TOWNSHIP: 5N
RANGE: 63W
6TH. P.M.
WELD COUNTY, CO



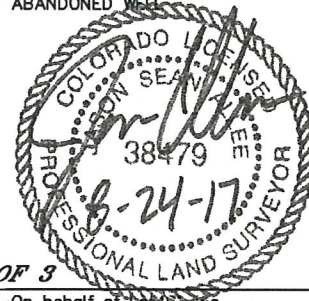
CLIENT: NOBLE ENERGY, INC.				LANDMAN: CORY NEIGHBORS			
INSTRUMENT OPERATOR: SCOTT SHERARD				SURVEY DATE: 3/27/2017		SURFACE USE: RANGELAND	
SHL FOOTAGE	SHL LAT°	SHL LONG°	SHL PDOP	SHL ELEV (FT.)	SHL 1/4 1/4	SHL S-T-R	
1573	FNL	800	FWL	40.41700	-104.48598	2.5	4631

BHL FOOTAGE				BHL LAT °	BHL LONG °	BHL S-T-R
1480	FNL	385	FWL	40.41745	-104.44996	9-5-63

NOTE:

- 1) Bearings shown are Grid Bearings of the Colorado State Plane Coordinate System, North Zone, North American Datum 1983. The lineal dimensions as contained herein are based upon the "U.S. Survey Foot."
- 2) Distances to section lines measured at 90 degrees from said section lines.
- 3) Ground elevations are based on an observed GPS elevation (NAVD 1988 DATUM).
- 4) Latitude and Longitude shown are (NAD 83 DATUM).
- 5) IMPROVEMENTS: See LOCATION DRAWING for all visible improvements within 500' of oil and gas location.
- 6) This map does not represent a boundary survey.

- LEGEND
- = ALIQUOT MONUMENT AS DESCRIBED
 - = CALCULATED POSITION
 - ⊙ = SURFACE HOLE LOCATION (SHL)
 - ▲ = ENTRY POINT LOCATION (EP)
 - = BOTTOM HOLE LOCATION (BHL)
 - ⊗ = EXISTING WELL
 - ⊗ = ABANDONED WELL



SHEET 1 OF 3

Jason S. Allee—On behalf of Lat40°, Inc.
Colorado Licensed Professional Land Surveyor No. 38479
DATE: 8/24/2017
PROJECT#: 2017024

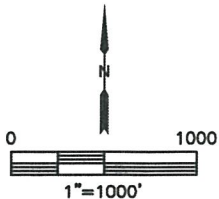
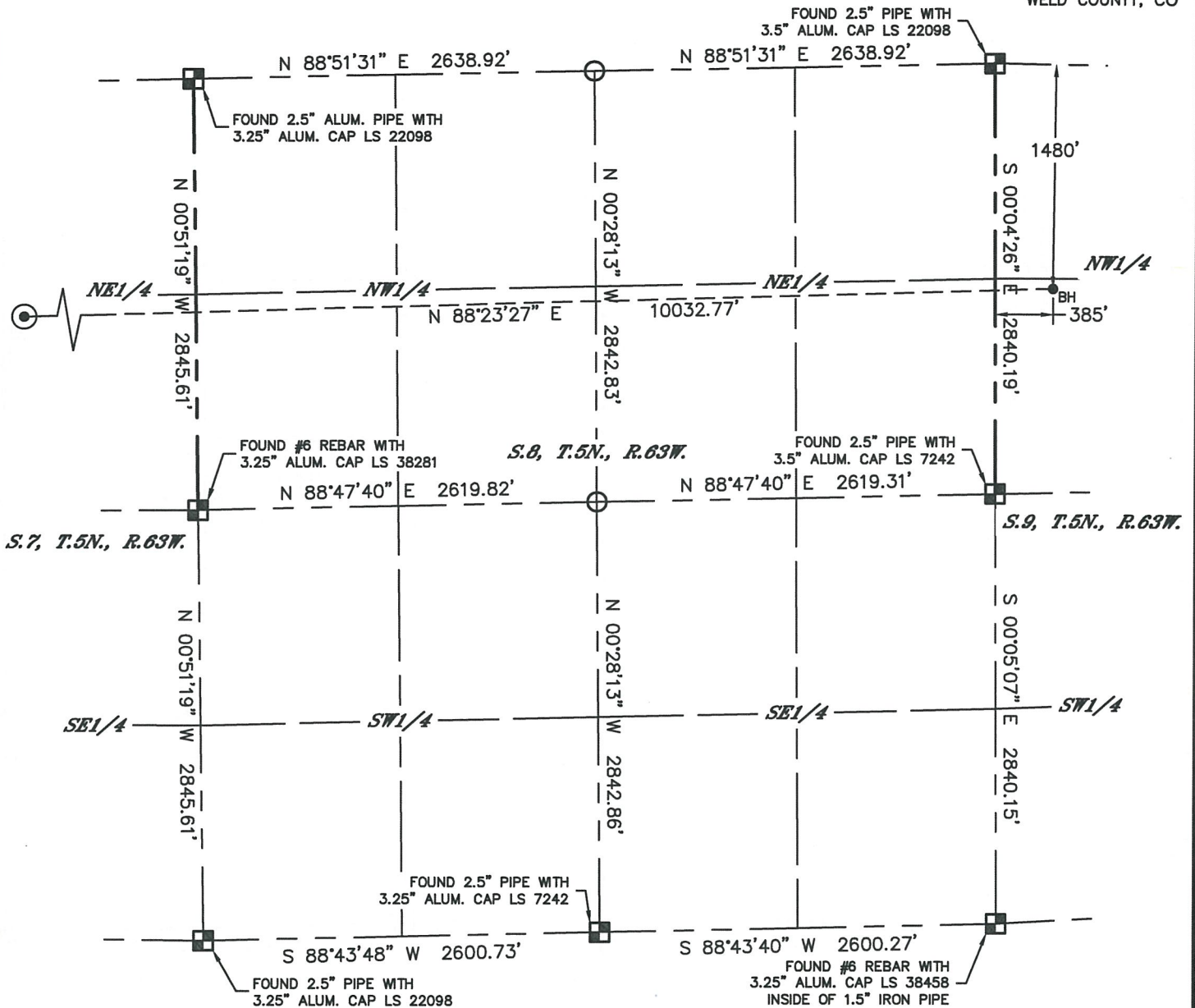


Lat40°, Inc. 6250 W. 10th Street, Unit 2, Greeley, CO 970-515-5294

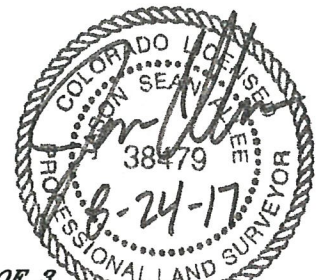
WELL LOCATION CERTIFICATE

SLW RANCH STATE BB07-668

SECTION: 7
TOWNSHIP: 5N
RANGE: 63W
6TH. P.M.
WELD COUNTY, CO



- LEGEND
- = ALIQUOT MONUMENT AS DESCRIBED
 - = CALCULATED POSITION
 - ⊙ = SURFACE HOLE LOCATION (SHL)
 - ▲ = ENTRY POINT LOCATION (EP)
 - _{BH} = BOTTOM HOLE LOCATION (BHL)
 - ⊕ = EXISTING WELL
 - ⊖ = ABANDONED WELL



SHEET 2 OF 3

Jason S. Allee—On behalf of Lat40°, Inc.
Colorado Licensed Professional Land Surveyor No. 38479
DATE: 8/24/2017
PROJECT#: 2017024

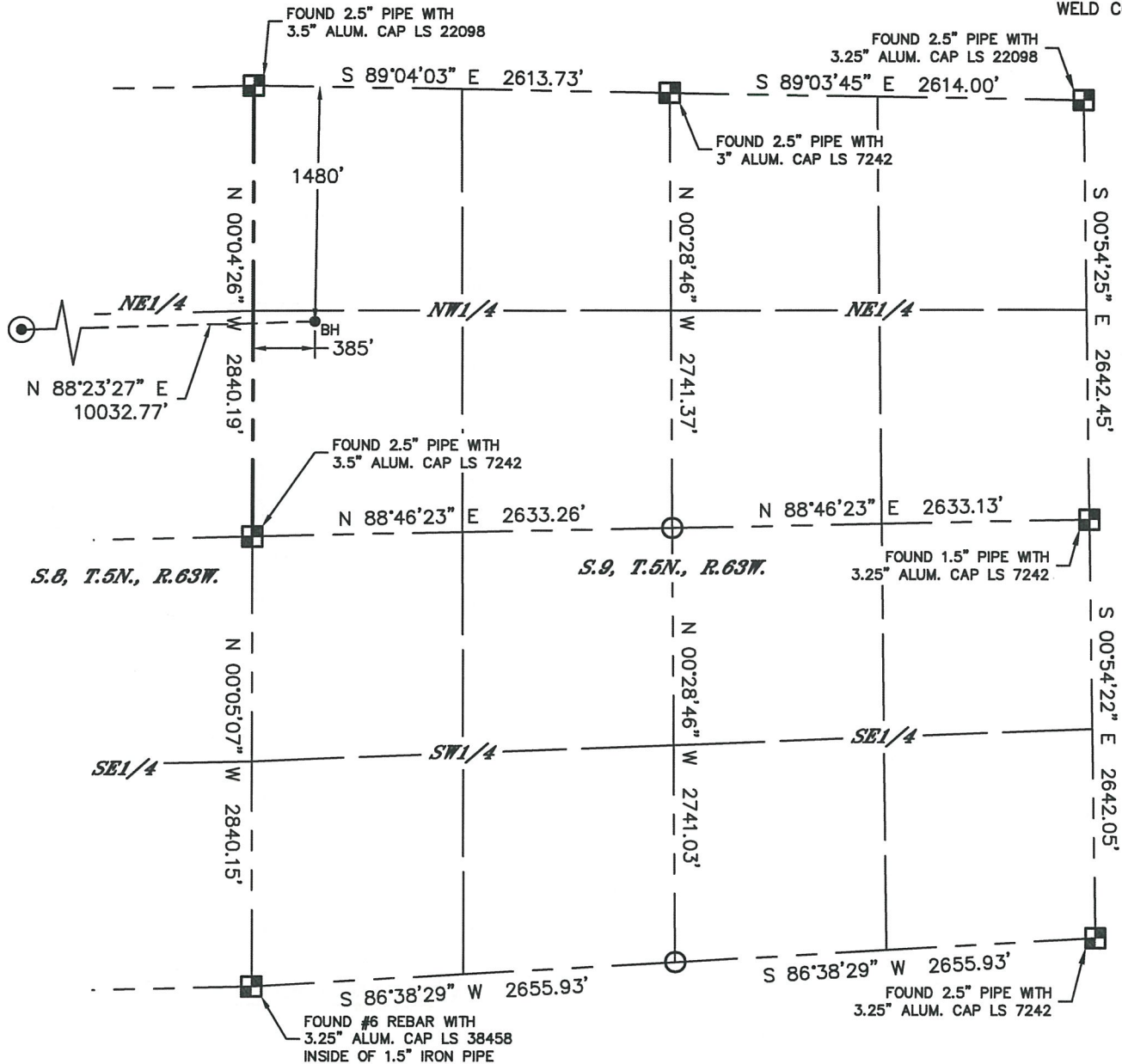


Lat40°, Inc. 6250 W. 10th Street, Unit 2, Greeley, CO 970-515-5294

WELL LOCATION CERTIFICATE

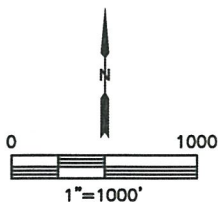
SLW RANCH STATE BB07-668

SECTION: 7
TOWNSHIP: 5N
RANGE: 63W
6TH. P.M.
WELD COUNTY, CO



LEGEND

- = ALIQUOT MONUMENT AS DESCRIBED
- = CALCULATED POSITION
- ⊙ = SURFACE HOLE LOCATION (SHL)
- ▲ = ENTRY POINT LOCATION (EP)
- _{BH} = BOTTOM HOLE LOCATION (BHL)
- ⊕ = EXISTING WELL
- ⊖ = ABANDONED WELL



SHEET 3 OF 3

Jason S. Allee—On behalf of Lat40°, Inc.
Colorado Licensed Professional Land Surveyor No. 38479
DATE: 8/24/2017
PROJECT#: 2017024