

talonlpe.com • 866.742.0742



**Nelson C-1
Groundwater Monitoring Report - First Quarter 2018
Remediation Project No. 9146**

April 11, 2018

Prepared By:
Talon/LPE
1811 East Mulberry Street
Fort Collins, CO 80524

Prepared For:
Whiting Petroleum Corporation

Table of Contents

1	Introduction	1
2	Objective	1
3	Regulatory Framework.....	1
4	Site Characteristics	1
5	Groundwater Monitoring.....	2
6	Product Removal and Gauging.....	3
7	Conclusions & Recommendations	3

Attachment 1 - Figures

Attachment 2 - Tables

Attachment 3 - Analytical Report

1 Introduction

Talon/LPE (Talon) was contracted by Whiting Petroleum Corporation (Whiting) to conduct groundwater monitoring activities at the Nelson C1 site (Site) in Weld County, Colorado. The site is located at the northwest quarter of the southeast quarter of Section 18, Township 10 North, Range 58 West, 6th Principal Meridian at 40°50'10.72"N and 103°54'17.73"W (Attachment 1). The site is identified by the State of Colorado Oil and Gas Conservation Commission (COGCC) as Spill/Release Point Facility ID 441208 and as Remediation Project Number 9146. The Site Plan is shown on Figure 1, and the general site location is shown on Figure 6.

2 Objective

The primary objective of this document is to report on Site activities completed during First Quarter 2018 which included groundwater monitoring and product removal.

3 Regulatory Framework

The COGCC has regulatory jurisdiction over oil and natural gas industry operations in the State of Colorado. Section 900 of the COGCC Rules is for Exploration and Production Waste Management. More specifically, Section 910 details the Concentrations and Sampling for Soil and Groundwater rules. The regulatory limits for specific analytes in groundwater are detailed in Table 910-1 and are summarized below.

Compound	COGCC Table 910-1 Groundwater Concentrations
Benzene	0.005 mg/L
Toluene	1.0 mg/L
Ethylbenzene	0.7 mg/L
Xylenes (total)	10 mg/L

4 Site Characteristics

4.1 Geography

The site is located in the Pawnee Grasslands in Weld County, which is the northeastern part of Colorado. The Grasslands are part of the Colorado Eastern Plains and are relatively flat with the exception of the Pawnee Creek which drains into the South Platte River.

4.2 Geologic Summary

Geology in this area consists of Oligocene age soils of the White River Group comprised of the Brule Formation and Chadron Formation. The Brule Formation consists of interbedded claystones, mudstones, and siltstones of grayish green color. Underlying the Brule Formation is the Chadron Formation comprised of sandstones, claystones, and conglomerates; color varies from yellowish-brown to olive-gray.

4.3 Groundwater

According to the Colorado Division of Water Resources Website, there are no water wells within 1,000-foot radius of the Site.

Depth to groundwater levels, as measured on March 15, 2018, in the 22 groundwater monitoring wells range from 27.48 (MW-9) to 37.78 (MW-19) feet below top of casing (Table 3), which are above-ground by approximately three (3) feet (ft). Several wells had measurable amounts of phase-separated hydrocarbons (PSH) during this monitoring event (Table 3 and Figure 4).

5 Groundwater Monitoring

On March 15, 2018, the 22 monitoring wells were gauged for depth to water and depth to PSH (Table 4). Wells with less than 0.1 feet of PSH were purged of three (3) well casing volumes, or until the wells became dry. On March 16, 2018, Talon personnel collected groundwater samples from these wells. Monitoring wells MW-3, MW-5, MW-7, MW-17, MW-20, and MW-21 were not sampled due to the presence of PSH greater than 0.1 feet. Figure 5 shows groundwater elevation contours and the hydraulic gradient based on wells with no measurable PSH. The hydraulic gradient flows to the south-southeast and east with MW-8 as the highest groundwater level elevation. The gradient has been calculated to be approximately 0.010 ft/foot to the east-southeast between monitoring wells MW-8 and MW-12 and approximately 0.010 ft/foot to the southeast between monitoring wells MW-8 and MW-13.

The collected groundwater samples were submitted to Summit Scientific in Golden, Colorado (Summit) for analysis of benzene, toluene, ethylbenzene, and total xylenes (BTEX) via method SW8260. Purge water generated during development and sampling was placed in poly containers within secondary containment pending off-site disposal.

Table 1 in Attachment 2 summarizes the well completion and survey information. Groundwater analytical results are summarized in Table 2 and shown on Figure 2.

Groundwater laboratory analytical results for benzene ranged from below laboratory detection limits to 13 mg/L (MW-2). Benzene concentrations increased from Fourth Quarter 2017 to First Quarter 2018 in monitoring wells MW-4, MW-9, MW-10, MW-11, MW-16, and MW-19. Benzene concentrations decreased in monitoring wells MW-1, MW-2, MW-8, MW-14, MW-15, MW-18, and MW-22. Benzene concentrations remained unchanged in monitoring wells MW-12 and MW-13. Figure 3 shows the isoconcentration contours of dissolved-phase benzene analytical results.

Analytical results for toluene ranged from below laboratory detection limits to 13 mg/L (MW-8). Toluene concentrations increased from Fourth Quarter 2017 to First Quarter 2018 in monitoring wells MW-4, MW-9, MW-10, MW-11, MW-12, and MW-18. Toluene concentrations decreased in monitoring wells MW-2, MW-8, MW-14, MW-15, and MW-22. Toluene concentrations remained unchanged in monitoring wells MW-1, MW-13, MW-16, and MW-19.

Analytical results for ethylbenzene ranged from below laboratory detection limits to 1.1 mg/L (MW-2 and MW-6). Ethylbenzene concentrations increased from Fourth Quarter 2017 to First Quarter 2018 in monitoring wells MW-4, MW-8, MW-9, and MW-18. Ethylbenzene concentrations decreased in monitoring wells MW-1, MW-2, MW-14, MW-16, and MW-22, and remained unchanged in monitoring wells MW-10, MW-11, MW-12, MW-13, MW-15, and MW-19.

Analytical results for total xylenes ranged from below laboratory detection limits to 7.6 mg/L (MW-2). Total xylenes concentrations increased from Fourth Quarter 2017 to First Quarter 2018 in monitoring wells MW-1, MW-2, MW-4, MW-8, MW-9, MW-10, MW-11, MW-15, and MW-18. Total xylenes concentrations decreased in monitoring wells MW-14, MW-16, and MW-22, and remained unchanged in MW-12, MW-13, and MW-19.

A copy of the laboratory reports and chain of custody documentation is included in Attachment 3.

6 Product Removal and Gauging

Talon gauging data from March 15, 2018, reveals the presence of PSH in monitoring wells MW-1, MW-2, MW-3, MW-5, MW-6, MW-7, MW-15, MW-17, MW-20, and MW-21, ranging from 0.02 ft to 1.04 ft (Table 3). Figure 4 shows contours of PSH thickness.

Product recovery efforts were suspended for two weeks prior to groundwater sampling activities to allow the fluid levels in each well to reach static equilibrium. Following the groundwater sampling event, product recovery efforts resumed. All waste produced by hand-bailing is stored on site in poly containers within secondary containment pending offsite disposal. Table 4 summarizes PSH removal and recovery on a monthly basis. To date, over 428 gallons of free product have been recovered from the site via hand-bailing and product skimmer pump system.

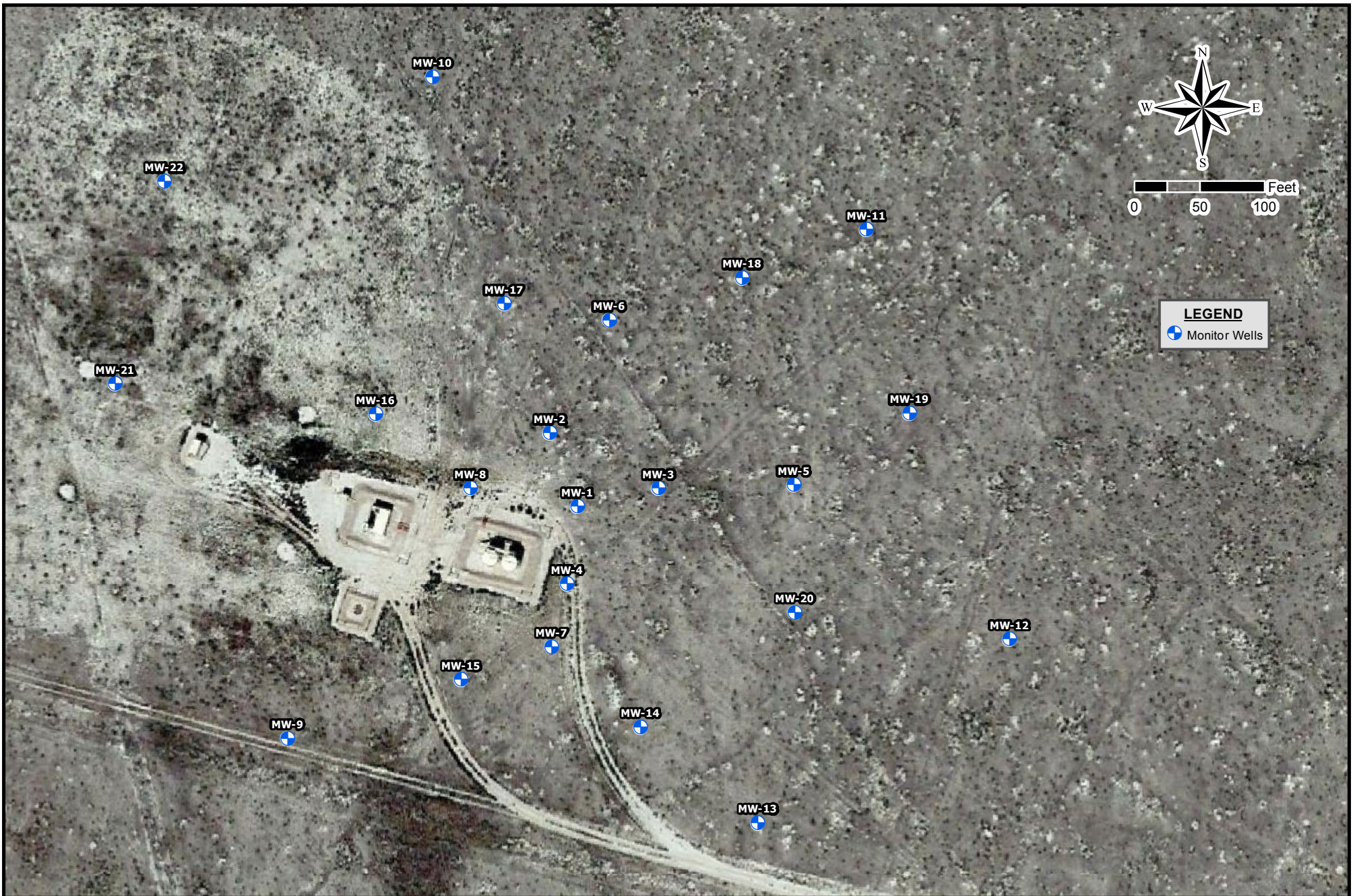
7 Conclusions & Recommendations

During the First Quarter 2018, Talon collected groundwater samples from 16 of the 22 monitoring wells at the Site. Groundwater laboratory analytical results for benzene ranged from below laboratory detection limits to 13 mg/L (MW-2). Analytical results for toluene ranged from below laboratory detection limits to 13 mg/L (MW-8). Analytical results for ethylbenzene ranged from below laboratory detection limits to 1.1 mg/L (MW-2 and MW-6). Analytical results for total xylenes ranged from below laboratory detection limits to 7.6 mg/L (MW-2). PSH was measured in 10 of the 22 monitoring wells ranging from 0.02 feet to 1.04 feet thick.

Talon will be overseeing the drilling and installation of two (2) new monitoring wells to the west of MW-21 and MW-22. Following the installation, the wells will be developed and sampled for laboratory analysis. If impacts are observed during the installation or monitoring of these two (2) monitoring wells, an additional two (2) monitoring wells will be installed to the west. The drilling and installation is anticipated to occur in April 2018.

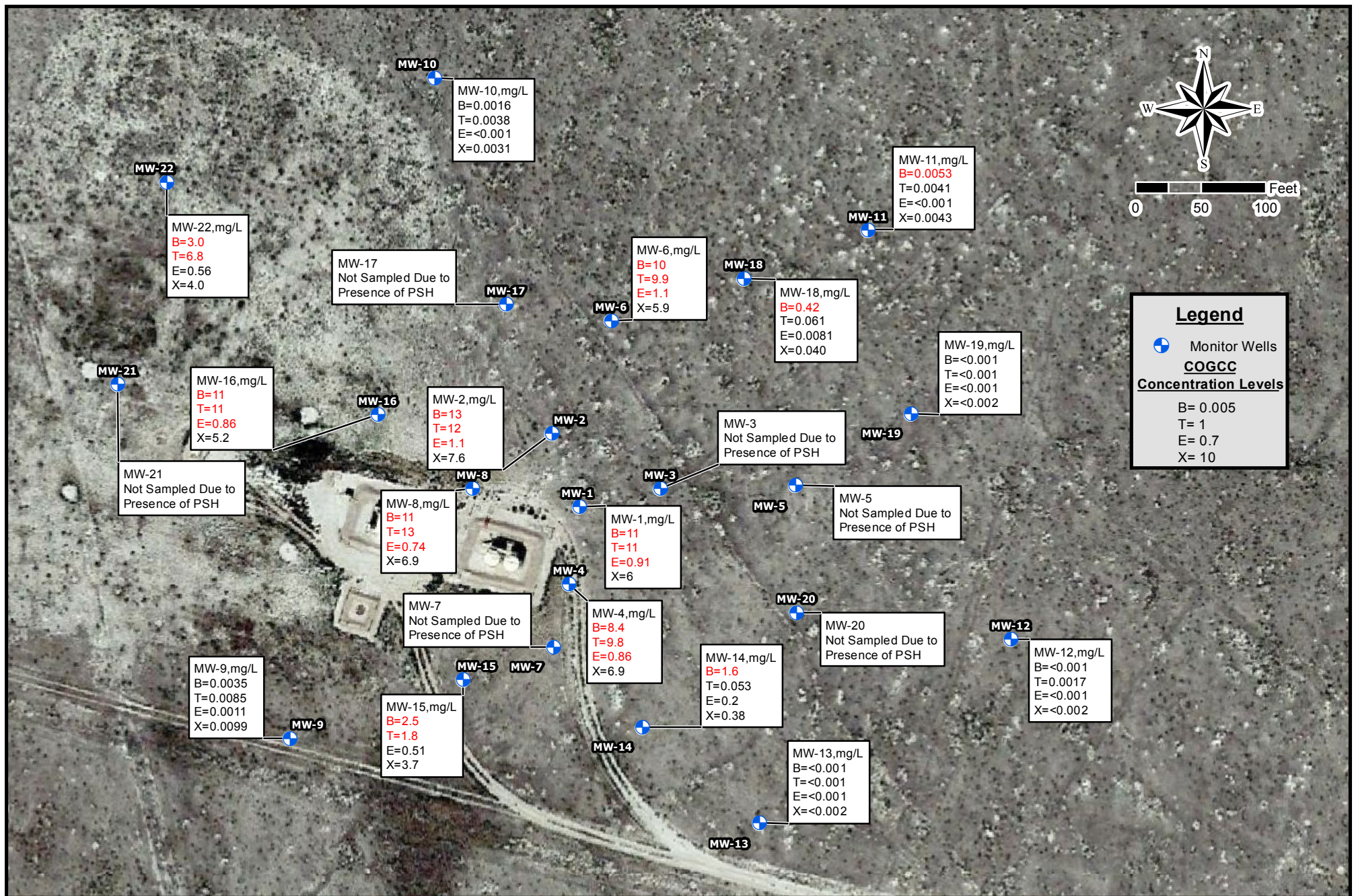
Talon will continue quarterly monitoring and product recovery at the Site. It is anticipated to reinstall the product skimmer pump system in April 2018. The next groundwater sampling event is anticipated to occur in June 2018.

Attachment 1
Figures



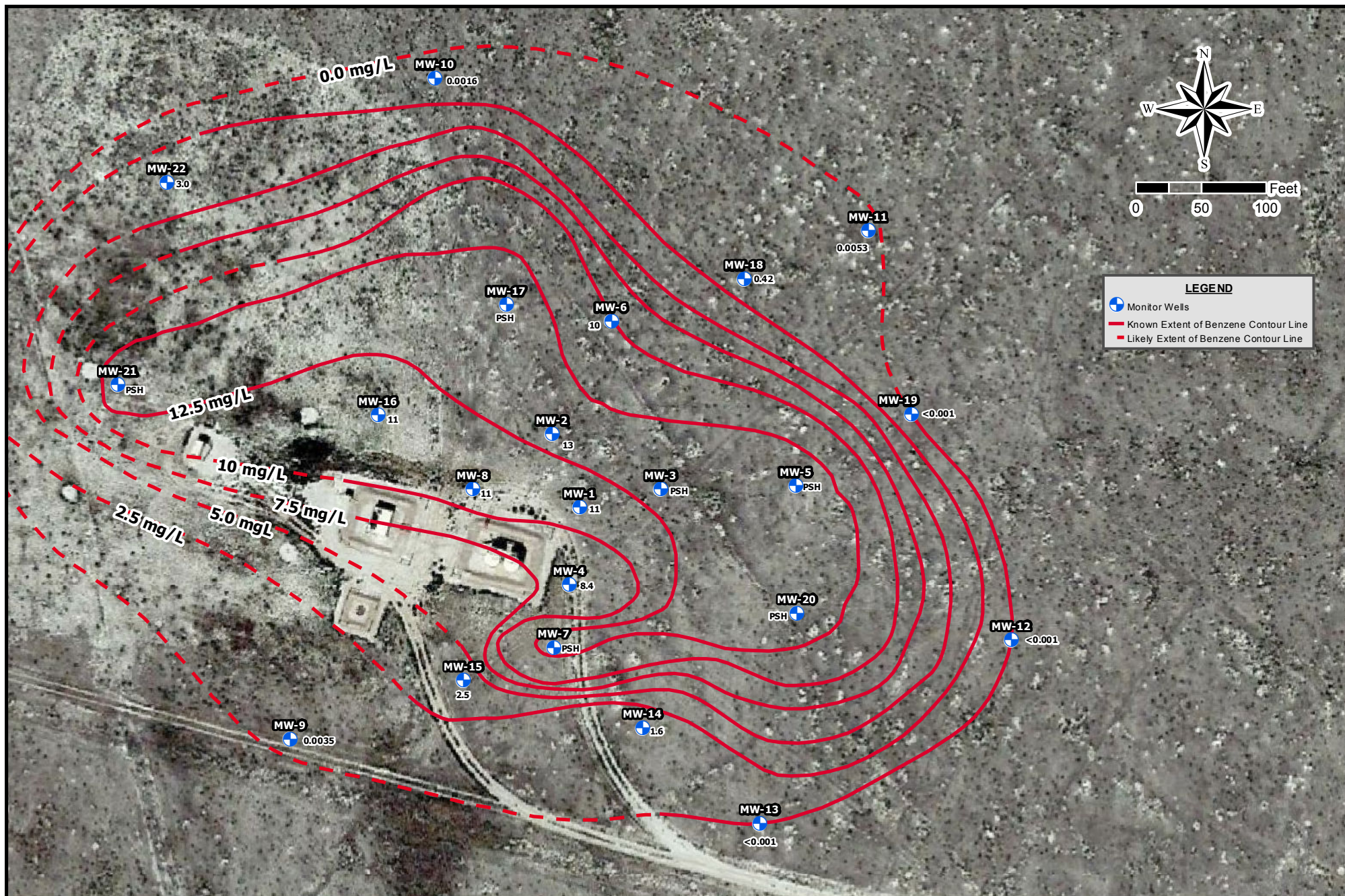
Drafted: 4/4/2018
1 in = 100 ft
Drafted By: IJM

Whiting Oil and Gas Corporation
Nelson C-1
Weld County, Colorado
Figure 1- Site Map



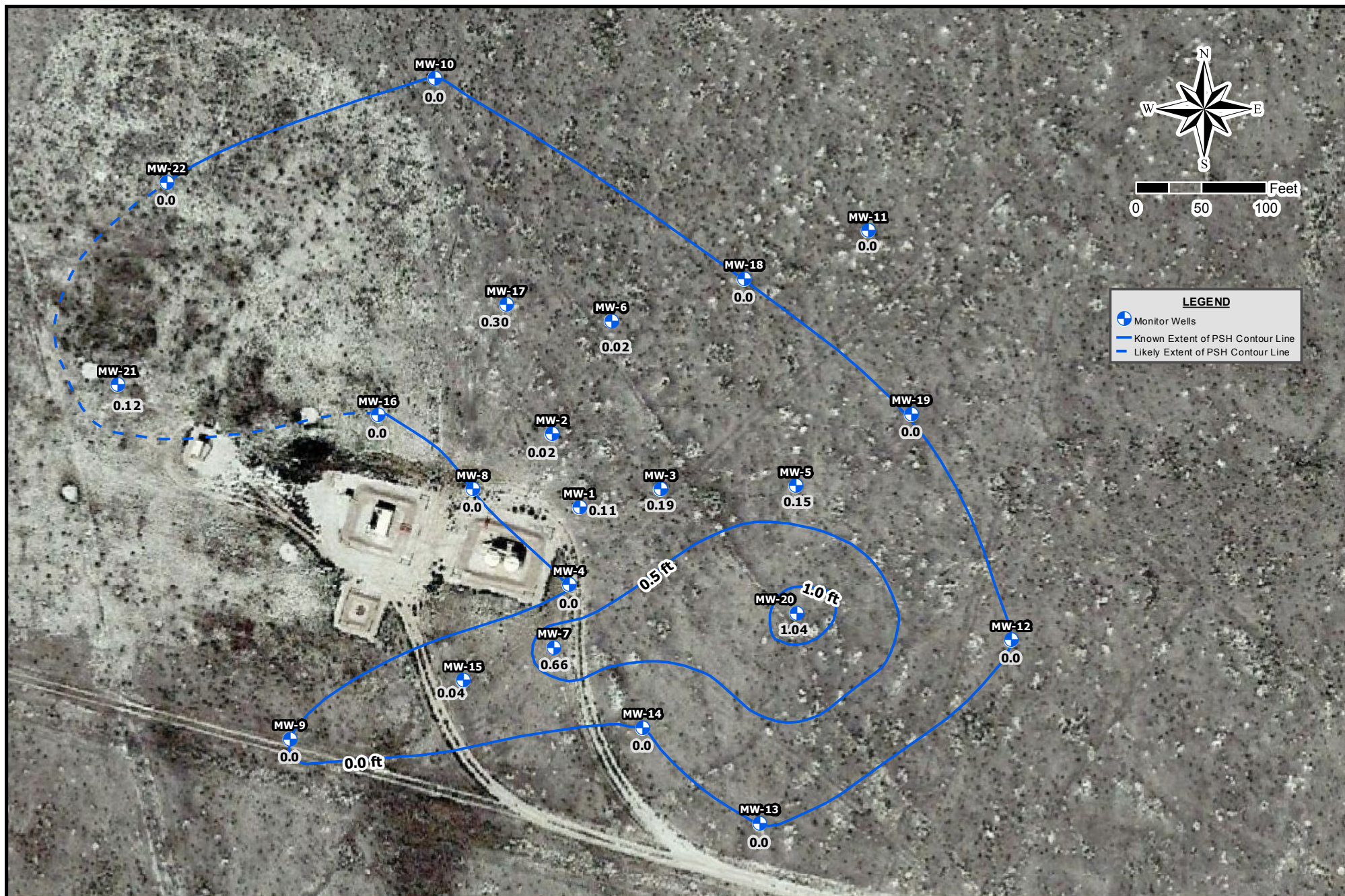
Drafted: 4/4/2018
1 in = 100 ft
Drafted By: IJM

Whiting Oil and Gas Corporation
Nelson C-1
Weld County, Colorado
Figure 2 - Groundwater Concentration Map (03/16/2018)



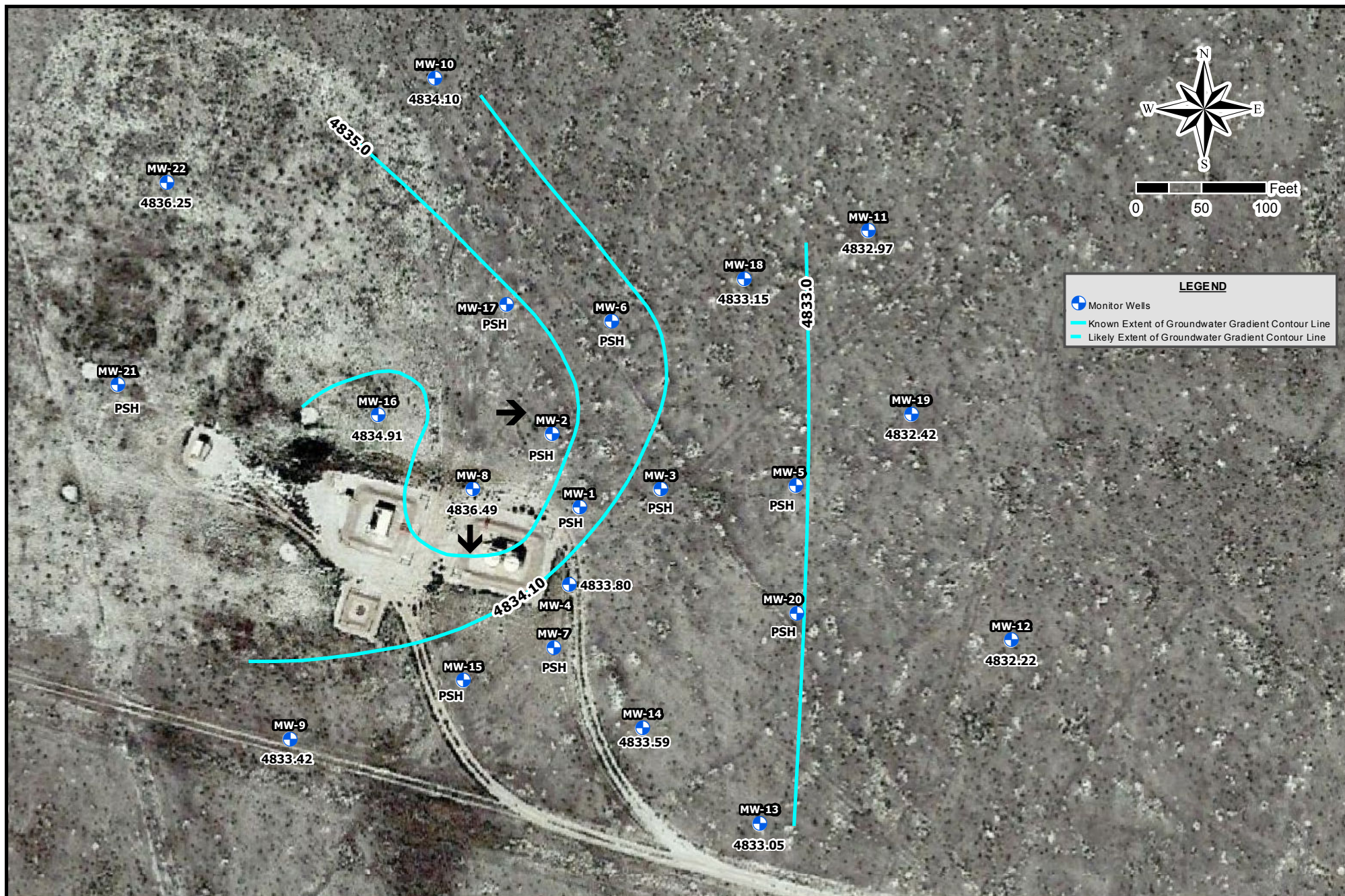
Drafted: 4/4/2018
 1 in = 100 ft
 Drafted By: IJM

Whiting Oil and Gas Corporation
 Nelson C-1
 Weld County, Colorado
 Figure 3 - Benzene Isoconcentration Map (03/16/2018)



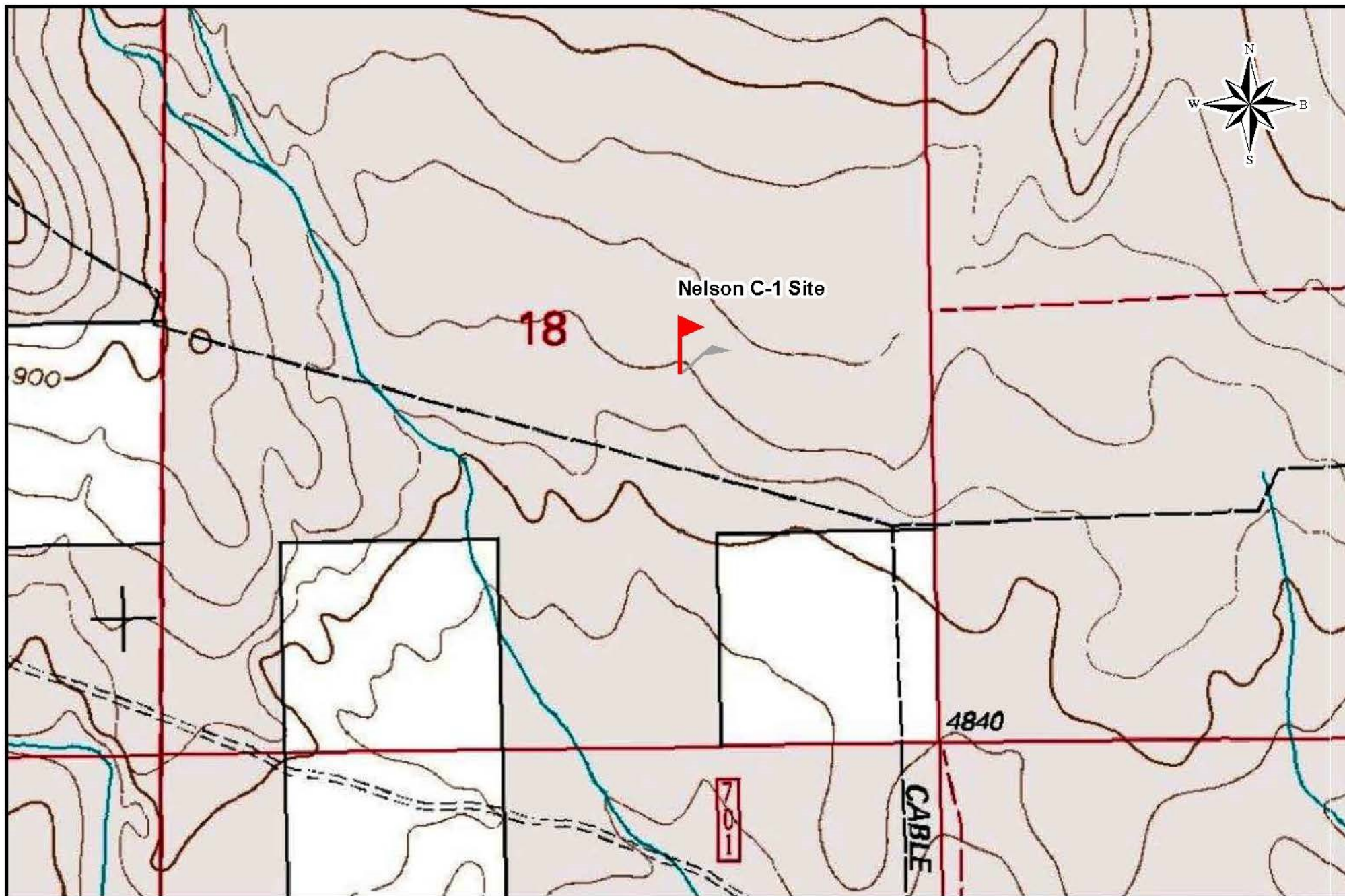
Drafted: 4/4/2018
 1 in = 100 ft
 Drafted By: IJM

Whiting Oil and Gas Corporation
 Nelson C-1
 Weld County, Colorado
 Figure 4 - PSH Isoconcentration Map (03/15/2018)



Drafted: 4/4/2018
 1 in = 100 ft
 Drafted By: IJM

Whiting Oil and Gas Corporation
 Nelson C-1
 Weld County, Colorado
 Figure 5 - Groundwater Gradient Map (03/15/2018)



Drafted: 4/4/2018
Map Scale: 1":10,000'
Drafted By: IJM

Whiting Oil and Gas Corporation
Nelson C-1
Weld County, Colorado
Figure 6 - Topographic Map

Attachment 2 Tables



Table 1 - Well Information

**Whiting Oil and Gas Corporation
Nelson C-1
Weld County, Colorado**

Well ID	Latitude	Longitude	Ground Surface Elevation (ft amsl)	TOC Elevation (ft amsl)	Screen Interval (ft bgs)	Total Depth (ft)
MW-1	40.836400	-103.904672	4861.9	4865.0	19.8-39.8	40.38
MW-2	40.836550	-103.904761	4862.2	4865.6	19-39	39.50
MW-3	40.836453	-103.904461	4863.2	4866.6	19.5-39.5	40.00
MW-4	40.836239	-103.904742	4860.6	4863.7	19.5-39.5	40.00
MW-5	40.836419	-103.904069	4865.0	4868.0	20-40	40.00
MW-6	40.836722	-103.904467	4863.8	4867.1	20-45	45.00
MW-7	40.836089	-103.904822	4859.3	4862.6	20-40	40.00
MW-8	40.836469	-103.904956	4860.9	4864.3	20-40	40.00
MW-9	40.835925	-103.905525	4857.9	4860.9	17-32	35.00
MW-10	40.837317	-103.905089	4864.5	4867.7	19-39	39.00
MW-11	40.836978	-103.903889	4868.6	4871.6	19-44	44.00
MW-12	40.836108	-103.903511	4867.0	4870.1	18-38	38.00
MW-13	40.835728	-103.904222	4861.5	4864.4	20-40	40.00
MW-14	40.835936	-103.904542	4860.4	4863.7	20-40	40.00
MW-15	40.836042	-103.905064	4858.6	4861.4	19-34	34.00
MW-16	40.836608	-103.905264	4860.1	4863.4	19-39	39.00
MW-17	40.836836	-103.904900	4862.8	4866.0	19-44	44.00
MW-18	40.836881	-103.904236	4865.8	4868.6	19-44	44.00
MW-19	40.836589	-103.903778	4867.3	4870.2	19-39	39.00
MW-20	40.836172	-103.904103	4864.1	4867.0	19-39	39.00
MW-21	40.836680	-103.905987	4861.2	4864.0	20-40	40.15
MW-22	40.837107	-103.905838	4863.9	4866.9	20-40	39.68

TOC - Top of Casing
ft bgs - Feet Below Ground Surface
ft amsl - Feet Above Mean Sea Level



Table 2 - Groundwater Analytical Data

Whiting Oil and Gas Corporation
Nelson C-1
Weld County, Colorado

Sample ID	Lab ID	Date	Concentration (mg/L)			
			Benzene	Toluene	Ethyl-Benzene	Xylenes
COGCC Table 910-1 Concentration Levels			0.005	1	0.7	10
MW-1	1511065-2	11/04/15	17	18	1	5.4
	1602138-01	02/17/16	15	13	0.99	5.5
	1606205-01	06/21/16	17	16	1.1	6.4
	1609096-01	09/16/16	19	16	1.1	6.5
	1612127-01	12/16/16	28	38	2.5	12
	1703157-01	03/17/17	12	10	0.95	5.9
	1706184-01	06/16/17	11	12	0.97	6.2
	1709144-11	09/15/17	13	11	0.82	5.7
	1712267-01	12/20/17	12	11	0.93	5.8
1803216-01	03/16/18	11	11	0.91	6	
MW-1 (Duplicate)	1706184-15	06/16/17	11	11	0.93	5.7
MW-2	1511065-3	11/04/15	18	20	0.96	5
	1602138-02	02/17/16	16	14	1.4	8.2
	1606205-02	06/21/16	18	16	1	6.1
	1609096-02	09/16/16	26	25	1.2	7.1
	1612127-02	12/16/16	16	16	1.1	6.8
	NS	03/17/17	Not Sampled Due to Presence of PSH			
	1706184-02	06/16/17	13	15	1	6.1
	1709144-10	09/15/17	14	16	0.41	6.2
	1712267-02	12/20/17	14	16	1.2	7.3
1803216-02	03/16/18	13	12	1.1	7.6	
MW-3	NS	11/04/15	Not Sampled Due to Presence of PSH			
	NS	02/17/16	Not Sampled Due to Presence of PSH			
	NS	06/21/16	Not Sampled Due to Presence of PSH			
	NS	09/16/16	Not Sampled Due to Presence of PSH			
	NS	12/16/16	Not Sampled Due to Presence of PSH			
	NS	03/17/17	Not Sampled Due to Presence of PSH			
	NS	06/16/17	Not Sampled Due to Presence of PSH			
	NS	09/15/17	Not Sampled Due to Presence of PSH			
	NS	12/20/17	Not Sampled Due to Presence of PSH			
NS	03/16/18	Not Sampled Due to Presence of PSH				
MW-4	1511065-1	11/04/15	16	20	0.94	4.8
	1602138-03	02/17/16	13	15	0.91	5.5
	1606205-03	06/21/16	12	16	0.99	6
	1609096-03	09/16/16	12	18	0.99	6.7
	1612127-03	12/16/16	14	19	1.1	7.2
	1703157-02	03/17/17	9.5	9.5	0.73	4.5
	1706184-03	06/16/17	11	13	0.82	5.8
	1710041-01	10/03/17	7.7	7.9	0.73	4.9
	1712267-03	12/20/17	7.5	8.4	0.71	5.1
1803216-03	03/16/18	8.4	9.8	0.86	6.9	
MW-4 (Duplicate)	1712267-16	12/20/17	9.9	10	0.86	6.2
MW-5	NS	02/17/16	Not Sampled Due to Presence of PSH			
	NS	06/21/16	Not Sampled Due to Presence of PSH			
	NS	09/16/16	Not Sampled Due to Presence of PSH			
	NS	12/16/16	Not Sampled Due to Presence of PSH			
	NS	03/17/17	Not Sampled Due to Presence of PSH			
	NS	06/16/17	Not Sampled Due to Presence of PSH			
	NS	09/15/17	Not Sampled Due to Presence of PSH			
	NS	12/20/17	Not Sampled Due to Presence of PSH			
	NS	03/16/18	Not Sampled Due to Presence of PSH			
MW-6	NS	02/17/16	Not Sampled Due to Presence of PSH			
	NS	06/21/16	Not Sampled Due to Presence of PSH			
	NS	09/16/16	Not Sampled Due to Presence of PSH			
	NS	12/16/16	Not Sampled Due to Presence of PSH			
	NS	03/17/17	Not Sampled Due to Presence of PSH			
	NS	06/16/17	Not Sampled Due to Presence of PSH			
	NS	09/15/17	Not Sampled Due to Presence of PSH			
	NS	12/20/17	Not Sampled Due to Presence of PSH			
	1803216-04	03/16/18	10	9.9	1.1	5.9



Table 2 - Groundwater Analytical Data

Whiting Oil and Gas Corporation
Nelson C-1
Weld County, Colorado

Sample ID	Lab ID	Date	Concentration (mg/L)			
			Benzene	Toluene	Ethyl-Benzene	Xylenes
COGCC Table 910-1 Concentration Levels			0.005	1	0.7	10
MW-7	NS	02/17/16	Not Sampled Due to Presence of PSH			
	NS	06/21/16	Not Sampled Due to Presence of PSH			
	NS	09/16/16	Not Sampled Due to Presence of PSH			
	NS	12/16/16	Not Sampled Due to Presence of PSH			
	NS	03/17/17	Not Sampled Due to Presence of PSH			
	NS	06/16/17	Not Sampled Due to Presence of PSH			
	NS	09/15/17	Not Sampled Due to Presence of PSH			
	NS	12/20/17	Not Sampled Due to Presence of PSH			
MW-8	NS	03/16/18	Not Sampled Due to Presence of PSH			
	1602138-04	02/17/16	12	13	1	5.3
	1606205-04	06/21/16	17	17	1.1	6.4
	1609096-04	09/16/16	20	20	0.85	7.1
	1612127-04	12/16/16	17	17	0.82	6.1
	1703157-03	03/17/17	13	14	0.89	6.6
	1706184-04	06/16/17	9.6	14	0.97	6.2
	1709144-09	09/15/17	13	9.4	0.018	5
MW-9	1712267-04	12/20/17	14	14	0.62	5.4
	1803216-05	03/16/18	11	13	0.74	6.9
	1603161-01	03/22/16	<0.001	0.0016	<0.001	0.0039
	1606205-05	06/21/16	<0.001	<0.001	<0.001	<0.001
	1609096-05	09/16/16	<0.001	<0.001	<0.001	<0.001
	1612127-05	12/16/16	<0.001	<0.001	<0.001	<0.001
	1703157-04	03/17/17	<0.001	<0.001	<0.001	<0.001
	1706184-05	06/16/17	<0.001	<0.001	<0.001	<0.001
MW-10	1709144-08	09/15/17	<0.001	<0.001	<0.001	<0.002
	1712267-05	12/20/17	<0.001	<0.001	<0.001	<0.002
	1803216-06	03/16/18	0.0035	0.0085	0.0011	0.0099
	NS	03/22/16	Dry - No Sample Collected			
	1606205-06	06/21/16	<0.001	<0.001	<0.001	<0.001
	1609096-06	09/16/16	<0.001	<0.001	<0.001	<0.001
	1612127-06	12/16/16	<0.001	<0.001	<0.001	<0.001
	1703157-05	03/17/17	<0.001	<0.001	<0.001	<0.001
MW-11	1706184-06	06/16/17	<0.001	<0.001	<0.001	<0.001
	1709144-07	09/15/17	<0.001	<0.001	<0.001	<0.002
	1712267-06	12/20/17	<0.001	<0.001	<0.001	<0.002
	1803216-07	03/16/18	0.0016	0.0038	<0.001	0.0031
	1603161-02	03/22/16	0.0016	0.0011	<0.001	<0.001
	1606205-07	06/21/16	<0.001	<0.001	<0.001	<0.001
	1609096-07	09/16/16	0.0078	0.0049	<0.001	<0.001
	1612127-07	12/16/16	0.0023	0.002	<0.001	<0.001
MW-12	1703157-06	03/17/17	0.0027	0.0037	<0.001	0.005
	1706184-07	06/16/17	<0.001	<0.001	<0.001	<0.001
	1709144-06	09/15/17	<0.001	<0.001	<0.001	<0.002
	1712267-07	12/20/17	<0.001	<0.001	<0.001	<0.002
	1803216-08	03/16/18	0.0053	0.0041	<0.001	0.0043
	NS	03/22/16	Dry - No Sample Collected			
	1606205-08	06/21/16	<0.001	<0.001	<0.001	<0.001
	1609096-08	09/16/16	<0.001	<0.001	<0.001	<0.001
MW-13	1612127-08	12/16/16	<0.001	<0.001	<0.001	<0.001
	1703157-07	03/17/17	<0.001	<0.001	<0.001	<0.001
	1706184-08	06/16/17	<0.001	<0.001	<0.001	<0.001
	1709144-05	09/15/17	<0.001	<0.001	<0.001	<0.002
	1712267-08	12/20/17	<0.001	<0.001	<0.001	<0.002
	1803216-09	03/16/18	<0.001	0.0017	<0.001	<0.002
	1603161-03	03/22/16	<0.001	0.0013	<0.001	<0.001
	1606205-09	06/21/16	<0.001	<0.001	<0.001	<0.001
MW-14	1609096-09	09/16/16	<0.001	<0.001	<0.001	<0.001
	1612127-09	12/16/16	<0.001	<0.001	<0.001	<0.001
	1703157-08	03/17/17	<0.001	<0.001	<0.001	<0.001
	1706184-09	06/16/17	<0.001	<0.001	<0.001	<0.001
	1709144-04	09/15/17	<0.001	<0.001	<0.001	<0.002
	1712267-09	12/20/17	<0.001	<0.001	<0.001	<0.002
	1803216-10	03/16/18	<0.001	<0.001	<0.001	<0.002



Table 2 - Groundwater Analytical Data

Whiting Oil and Gas Corporation
Nelson C-1
Weld County, Colorado

Sample ID	Lab ID	Date	Concentration (mg/L)			
			Benzene	Toluene	Ethyl-Benzene	Xylenes
COGCC Table 910-1 Concentration Levels			0.005	1	0.7	10
MW-14	1603161-04	03/22/16	2.5	2.3	0.48	1.3
	1606205-10	06/21/16	2.4	2.2	0.39	1.3
	1609096-10	09/16/16	3.4	2.2	0.44	1.5
	1612127-10	12/16/16	12	5.4	0.64	4
	1703157-09	03/17/17	2.5	1.1	0.44	1.4
	1706184-10	06/16/17	2.1	0.7	0.28	0.89
	1709144-03	09/15/17	1.9	0.29	0.27	0.62
	1712267-10	12/20/17	2.2	0.19	0.31	0.58
	1803216-11	03/16/18	1.6	0.053	0.2	0.38
MW-15	1603161-05	03/22/16	4.3	6.4	0.42	3.5
	1606205-11	06/21/16	6.5	5.2	0.59	3.6
	1609096-11	09/16/16	6	3.2	0.63	3.6
	1612127-11	12/16/16	17	18	1.1	6.4
	1703157-10	03/17/17	3.8	1	0.35	1.8
	1706184-11	06/16/17	4.4	1.1	0.52	2.8
	1709144-02	09/15/17	3.8	1.3	0.0029	3.1
	1712267-11	12/20/17	3.4	2.7	0.6	3.9
	1803216-12	03/16/18	2.5	1.8	0.51	3.7
MW-15 (Duplicate)	1803216-17	03/16/18	2.7	2.2	0.57	4.2
MW-16	1603161-06	03/22/16	14	16	0.68	6.1
	1606205-12	06/21/16	16	16	1.1	6.7
	1609096-12	09/16/16	18	18	1.3	7.3
	1612127-12	12/16/16	18	20	1.2	7.2
	1703157-11	03/17/17	12	13	1.1	6.4
	1706184-12	06/16/17	11	13	1.5	8.4
	1709144-01	09/15/17	10	12	0.76	5.9
	1712267-12	12/20/17	10	11	0.9	5.7
	1803216-13	03/16/18	11	11	0.86	5.2
MW-16 (Duplicate)	1703157-14	03/17/17	12	13	1.1	6.2
MW-17	NS	03/22/16	Not Sampled Due to Presence of PSH			
	NS	06/21/16	Not Sampled Due to Presence of PSH			
	NS	09/16/16	Not Sampled Due to Presence of PSH			
	NS	12/16/16	Not Sampled Due to Presence of PSH			
	NS	03/17/17	Not Sampled Due to Presence of PSH			
	NS	06/16/17	Not Sampled Due to Presence of PSH			
	NS	09/15/17	Not Sampled Due to Presence of PSH			
	NS	12/20/17	Not Sampled Due to Presence of PSH			
	NS	03/16/18	Not Sampled Due to Presence of PSH			
MW-18	1603161-07	03/22/16	0.084	0.047	0.0026	0.0074
	1606205-13	06/21/16	0.23	0.14	0.0039	0.040
	1609096-13	09/16/16	0.34	0.097	0.0034	0.040
	1612127-13	12/16/16	0.45	0.11	0.0089	0.047
	1703157-12	03/17/17	1.2	0.98	0.034	0.32
	1706184-13	06/16/17	0.47	0.33	0.015	0.20
	1709144-14	09/15/17	1.2	0.0071	<0.001	<0.002
	1712267-13	12/20/17	0.47	0.052	0.0062	0.035
	1803216-14	03/16/18	0.42	0.061	0.0081	0.040
MW-19	NS	03/22/16	Dry - No Sample Collected			
	1606205-14	06/21/16	0.0011	<0.001	<0.001	<0.001
	1609096-14	09/16/16	0.0051	0.0011	<0.001	<0.001
	1612127-14	12/16/16	<0.001	<0.001	<0.001	<0.001
	1703157-13	03/17/17	0.0021	<0.001	<0.001	<0.001
	1706184-14	06/16/17	0.002	0.0011	<0.001	<0.001
	1709144-13	09/15/17	0.013	0.0017	<0.001	0.0037
	1712267-14	12/20/17	0.0012	<0.001	<0.001	<0.002
	1803216-15	03/16/18	<0.001	<0.001	<0.001	<0.002



Table 2 - Groundwater Analytical Data

**Whiting Oil and Gas Corporation
Nelson C-1
Weld County, Colorado**

Sample ID	Lab ID	Date	Concentration (mg/L)			
			Benzene	Toluene	Ethyl-Benzene	Xylenes
COGCC Table 910-1 Concentration Levels			0.005	1	0.7	10
MW-20	NS	03/22/16	Not Sampled Due to Presence of PSH			
	NS	06/21/16	Not Sampled Due to Presence of PSH			
	NS	09/16/16	Not Sampled Due to Presence of PSH			
	NS	12/16/16	Not Sampled Due to Presence of PSH			
	NS	03/17/17	Not Sampled Due to Presence of PSH			
	NS	06/16/17	Not Sampled Due to Presence of PSH			
	NS	09/15/17	Not Sampled Due to Presence of PSH			
	NS	12/20/17	Not Sampled Due to Presence of PSH			
MW-21	NS	03/16/18	Not Sampled Due to Presence of PSH			
	NS	09/15/17	Not Sampled Due to Presence of PSH			
	NS	12/20/17	Not Sampled Due to Presence of PSH			
MW-22	NS	03/16/18	Not Sampled Due to Presence of PSH			
	1709144-12	09/15/17	4.0	14	0.84	11
	1712267-15	12/20/17	6.5	15	1.2	6.8
	1803216-16	03/16/18	3.0	6.8	0.56	4.0

mg/L -milligrams per liter

< - Analytical result is less than the reporting limit

COGCC - Colorado Oil and Gas Conservation Commission

NS - Not Sampled

PSH - Phase-Separated Hydrocarbons



Table 3 - Gauging Data

Whiting Oil and Gas Corporation
Nelson C-1
Weld County, Colorado

Well ID	Top of Casing Elevation (ft amsl)	Total Depth of Well (ft)	Date Gauged	Depth to Product (ft btoc)	DTW (ft btoc)	Product Thickness (ft)	Potentiometric Surface Elevation (ft)
MW-1	4865.00	40.38	11/4/2015	NA	36.49	0.00	4828.51
			12/3/2015	NA	30.88	0.00	4834.12
			12/8/2015	30.62	30.63	0.01	4834.38
			12/22/2015	NA	31.46	0.00	4833.54
			12/30/2015	NA	32.03	0.00	4832.97
			1/13/2016	NA	38.05	0.00	4826.95
			1/21/2016	NA	31.08	0.00	4833.92
			1/27/2016	31.10	31.13	0.03	4833.89
			2/8/2016	31.24	31.29	0.05	4833.75
			2/15/2016	30.90	30.92	0.02	4834.10
			2/16/2016	30.96	30.99	0.03	4834.03
			2/17/2016	NA	32.27	0.00	4832.73
			2/19/2016	NA	31.04	0.00	4833.96
			2/24/2016	NA	31.19	0.00	4833.81
			2/29/2016	NA	30.95	0.00	4834.05
			3/8/2016	NA	32.67	0.00	4832.33
			3/15/2016	NA	32.95	0.00	4832.05
			3/22/2016	NA	33.02	0.00	4831.98
			3/29/2016	NA	33.04	0.00	4831.96
			4/5/2016	NA	33.22	0.00	4831.78
			4/19/2016	NA	31.70	0.00	4833.30
			4/26/2016	NA	32.78	0.00	4832.22
			5/5/2016	NA	31.41	0.00	4833.59
			6/6/2016	31.35	31.36	0.01	4833.65
			6/20/2016	31.38	31.42	0.04	4833.61
			8/11/2016	NA	30.88	0.00	4834.12
			9/15/2016	NA	30.82	0.00	4834.18
			12/15/2016	30.98	30.99	0.01	4834.02
			3/16/2017	31.45	31.49	0.04	4833.54
			6/15/2017	31.91	31.95	0.04	4833.08
			9/14/2017	30.75	30.78	0.03	4834.24
			12/19/2017	NA	30.92	0.00	4834.08
			3/15/2018	30.91	31.02	0.11	4834.07
MW-2	4865.6	39.50	11/4/2015	31.15	31.20	0.05	4834.44
			12/3/2015	31.60	31.62	0.02	4834.00
			12/8/2015	31.50	31.52	0.02	4834.10
			12/22/2015	NA	31.29	0.00	4834.31
			12/30/2015	31.93	31.94	0.01	4833.67
			1/13/2016	NA	31.55	0.00	4834.05
			1/21/2016	NA	31.71	0.00	4833.89
			1/27/2016	NA	31.72	0.00	4833.88
			2/8/2016	31.90	31.92	0.02	4833.70
			2/15/2016	31.53	31.58	0.05	4834.06
			2/16/2016	31.63	31.66	0.03	4833.96
			2/17/2016	32.31	32.35	0.04	4833.28
			2/19/2016	31.68	31.73	0.05	4833.91
			2/24/2016	NA	31.80	0.00	4833.80
			2/29/2016	31.56	31.63	0.07	4834.03
			3/8/2016	NA	32.25	0.00	4833.35
			3/15/2016	NA	32.37	0.00	4833.23
			3/22/2016	NA	32.21	0.00	4833.39
			3/29/2016	NA	32.21	0.00	4833.39
			4/5/2016	NA	32.42	0.00	4833.18
			4/19/2016	32.25	32.27	0.02	4833.35
			4/26/2016	NA	32.36	0.00	4833.24
			5/5/2016	NA	32.12	0.00	4833.48
			6/6/2016	32.10	32.14	0.04	4833.49
			6/20/2016	32.15	32.17	0.02	4833.45
			8/11/2016	NA	31.43	0.00	4834.17
			9/15/2016	31.20	31.27	0.07	4834.39
			12/15/2016	38.31	38.50	0.49	4827.49
			3/16/2017	31.45	31.49	0.04	4834.14
			6/15/2017	32.15	32.20	0.05	4833.44
			9/14/2017	30.78	30.80	0.02	4834.82
			12/19/2017	NA	31.24	0.00	4834.36
			3/15/2018	31.14	31.16	0.02	4834.46



Table 3 - Gauging Data

Whiting Oil and Gas Corporation
Nelson C-1
Weld County, Colorado

Well ID	Top of Casing Elevation (ft amsl)	Total Depth of Well (ft)	Date Gauged	Depth to Product (ft btoc)	DTW (ft btoc)	Product Thickness (ft)	Potentiometric Surface Elevation (ft)
MW-3	4866.6	40.00	11/4/2015	35.61	36.52	0.91	4830.81
			12/3/2015	34.74	35.89	1.15	4831.63
			12/8/2015	34.77	35.62	0.85	4831.66
			12/22/2015	34.44	35.36	0.92	4831.98
			12/30/2015	35.07	35.93	0.86	4831.36
			1/13/2016	37.32	37.82	0.50	4829.18
			1/21/2016	33.70	34.78	1.08	4832.69
			1/27/2016	33.62	35.13	1.51	4832.68
			2/8/2016	33.47	35.88	2.41	4832.66
			2/15/2016	32.95	36.07	3.12	4833.04
			2/16/2016	32.98	36.16	3.18	4833.00
			2/17/2016	35.38	36.50	1.12	4831.00
			2/19/2016	33.80	35.09	1.29	4832.55
			2/24/2016	33.58	35.29	1.71	4832.68
			2/29/2016	33.46	35.37	1.91	4832.77
			3/8/2016	33.68	34.69	1.01	4832.72
			3/15/2016	33.65	33.70	0.05	4832.94
			3/22/2016	34.55	35.55	1.00	4831.85
			3/29/2016	34.48	35.38	0.90	4831.94
			4/5/2016	34.95	35.05	0.10	4831.63
			4/19/2016	34.01	34.71	0.70	4832.45
			4/26/2016	34.45	35.04	0.59	4832.03
			5/5/2016	35.37	36.11	0.74	4831.08
			6/6/2016	33.91	34.82	0.91	4832.51
			6/20/2016	33.75	35.32	1.57	4832.54
			8/11/2016	33.90	34.60	0.70	4832.56
			9/15/2016	33.71	34.41	0.70	4832.75
			12/15/2016	33.79	34.30	0.51	4832.71
			3/16/2017	34.87	35.72	0.85	4831.56
			6/16/2017	33.90	34.70	0.80	4832.54
			9/14/2017	NG	NG	NG	NG
			12/19/2017	33.40	33.61	0.21	4833.16
			3/15/2018	32.92	33.11	0.19	4833.64
MW-4	4863.7	40.00	11/4/2015	NA	35.69	0.00	4828.01
			12/3/2015	NA	37.50	0.00	4826.20
			12/8/2015	NA	35.78	0.00	4827.92
			12/22/2015	NA	34.55	0.00	4829.15
			12/30/2015	NA	35.60	0.00	4828.10
			1/13/2016	NA	38.05	0.00	4825.65
			1/21/2016	NA	34.28	0.00	4829.42
			1/27/2016	NA	30.36	0.00	4833.34
			2/8/2016	NA	29.24	0.00	4834.46
			2/15/2016	NA	29.03	0.00	4834.67
			2/16/2016	NA	29.02	0.00	4834.68
			2/17/2016	NA	36.60	0.00	4827.10
			2/19/2016	NA	33.94	0.00	4829.76
			2/24/2016	NA	29.81	0.00	4833.89
			2/29/2016	NA	29.51	0.00	4834.19
			3/8/2016	NA	33.15	0.00	4830.55
			3/15/2016	NA	35.27	0.00	4828.43
			3/22/2016	NA	35.13	0.00	4828.57
			3/29/2016	NA	35.02	0.00	4828.68
			4/5/2016	NA	35.94	0.00	4827.76
			4/19/2016	NA	33.14	0.00	4830.56
			4/26/2016	NA	29.88	0.00	4833.82
			5/5/2016	NA	29.36	0.00	4834.34
			6/6/2016	NA	29.35	0.00	4834.35
			6/20/2016	NA	29.31	0.00	4834.39
			8/11/2016	NA	29.00	0.00	4834.70
			9/15/2016	NA	29.03	0.00	4834.67
			12/15/2016	NA	29.48	0.00	4834.22
			3/16/2017	NA	29.89	0.00	4833.81
			6/15/2017	NA	31.90	0.00	4831.80
			9/14/2017	NA	29.75	0.00	4833.95
			12/19/2017	NA	29.84	0.00	4833.86
			3/15/2018	NA	29.90	0.00	4833.80



Table 3 - Gauging Data

Whiting Oil and Gas Corporation
Nelson C-1
Weld County, Colorado

Well ID	Top of Casing Elevation (ft amsl)	Total Depth of Well (ft)	Date Gauged	Depth to Product (ft btoc)	DTW (ft btoc)	Product Thickness (ft)	Potentiometric Surface Elevation (ft)
MW-5	4868.0	40.00	2/15/2016	40.31	40.41	0.10	4827.67
			2/16/2016	39.95	40.09	0.14	4828.02
			2/17/2016	Dry	Dry	0.00	
			2/19/2016	39.78	40.07	0.29	4828.16
			2/24/2016	38.60	39.19	0.59	4829.28
			2/29/2016	37.66	38.56	0.90	4830.16
			3/8/2016	36.66	37.95	1.29	4831.09
			3/15/2016	36.20	36.35	0.15	4831.77
			3/22/2016	35.95	37.80	1.85	4831.69
			3/29/2016	35.78	36.51	0.73	4832.08
			4/5/2016	NA	35.74	0.00	4832.26
			4/19/2016	35.65	38.30	2.65	4831.83
			4/26/2016	35.48	38.30	2.82	4831.97
			5/5/2016	35.52	35.53	0.01	4832.48
			6/6/2016	39.08	39.85	0.77	4828.77
			6/20/2016	37.22	38.46	1.24	4830.54
			8/11/2016	39.08	39.65	0.57	4828.81
			9/15/2016	37.18	38.37	1.19	4830.59
			12/15/2016	37.05	38.22	1.17	4830.72
			3/16/2017	37.10	38.22	1.12	4830.68
			6/15/2017	36.86	37.90	1.04	4830.94
			9/14/2017	NG	NG	NG	NG
			12/19/2017	35.87	36.00	0.13	4832.10
MW-6	4867.1	45.00	3/15/2018	35.59	35.74	0.15	4832.38
			2/15/2016	35.32	36.60	1.28	4831.53
			2/16/2016	35.33	36.91	1.58	4831.46
			2/17/2016	35.95	36.14	0.19	4831.11
			2/19/2016	35.55	36.50	0.95	4831.36
			2/24/2016	35.30	37.55	2.25	4831.36
			2/29/2016	34.76	38.19	3.43	4831.67
			3/8/2016	34.44	39.14	4.70	4831.74
			3/15/2016	34.28	38.44	4.16	4832.00
			3/22/2016	33.92	39.90	5.98	4832.01
			3/29/2016	33.88	40.03	6.15	4832.01
			4/5/2016	34.02	39.58	5.56	4831.99
			4/19/2016	34.11	40.91	6.80	4831.66
			4/26/2016	33.80	38.87	5.07	4832.31
			5/5/2016	34.01	40.78	6.77	4831.76
			6/6/2016	33.94	40.80	6.86	4831.82
			6/20/2016	34.72	39.50	4.78	4831.44
			8/11/2016	35.53	36.32	0.79	4831.42
			9/15/2016	35.17	36.99	1.82	4831.57
			12/15/2016	35.11	36.27	1.16	4831.76
			3/16/2017	35.19	36.20	1.01	4831.71
			6/15/2017	35.25	36.20	0.95	4831.66
			9/14/2017	34.81	35.09	0.28	4832.24
			12/19/2017	34.43	34.87	0.44	4832.58
MW-7	4862.6	40.00	3/15/2018	33.95	33.97	0.02	4833.15
			2/15/2016	31.86	34.29	2.43	4830.26
			2/16/2016	30.00	33.03	3.03	4832.01
			2/17/2016	35.38	36.50	1.12	4827.00
			2/19/2016	30.26	32.22	1.96	4831.96
			2/24/2016	28.01	30.35	2.34	4834.13
			2/29/2016	27.75	29.91	2.16	4834.43
			3/8/2016	27.55	29.73	2.18	4834.62
			3/15/2016	27.61	29.90	2.29	4834.54
			3/22/2016	27.58	29.93	2.35	4834.56
			3/29/2016	27.55	29.95	2.40	4834.58
			4/5/2016	27.75	30.28	2.53	4834.35
			4/19/2016	27.89	27.91	0.02	4834.71
			4/26/2016	27.44	30.06	2.62	4834.65
			5/5/2016	27.81	29.09	1.28	4834.54
			6/6/2016	28.62	30.50	1.88	4833.61
			6/20/2016	28.10	29.61	1.51	4834.20
			8/11/2016	28.68	29.30	0.62	4833.80
			9/15/2016	28.38	29.27	0.89	4834.05
			12/15/2016	28.67	29.32	0.65	4833.80
			3/16/2017	28.96	29.66	0.70	4833.50
			6/15/2017	29.21	29.89	0.68	4833.26
			9/14/2017	NG	NG	NG	NG
			12/19/2017	28.87	30.56	1.69	4833.40
			3/15/2018	28.90	29.56	0.66	4833.57



Table 3 - Gauging Data

Whiting Oil and Gas Corporation
Nelson C-1
Weld County, Colorado

Well ID	Top of Casing Elevation (ft amsl)	Total Depth of Well (ft)	Date Gauged	Depth to Product (ft btoc)	DTW (ft btoc)	Product Thickness (ft)	Potentiometric Surface Elevation (ft)
MW-8	4864.3	40.00	2/15/2016	NA	35.85	0.00	4828.45
			2/16/2016	NA	34.10	0.00	4830.20
			2/17/2016	NA	35.09	0.00	4829.21
			2/19/2016	NA	32.57	0.00	4831.73
			2/24/2016	NA	28.81	0.00	4835.49
			2/29/2016	NA	27.45	0.00	4836.85
			3/8/2016	NA	27.14	0.00	4837.16
			3/15/2016	NA	27.25	0.00	4837.05
			3/22/2016	NA	33.80	0.00	4830.50
			3/29/2016	NA	27.38	0.00	4836.92
			4/5/2016	27.70	27.73	0.03	4836.59
			4/19/2016	28.04	28.06	0.02	4836.26
			4/26/2016	27.72	27.75	0.03	4836.57
			5/5/2016	28.28	28.30	0.02	4836.02
			6/6/2016	28.46	28.52	0.06	4835.83
			6/20/2016	NA	27.83	0.00	4836.47
			8/11/2016	NA	26.28	0.00	4838.02
			9/15/2016	26.35	26.36	0.01	4837.95
			12/15/2016	NA	27.45	0.00	4836.85
			3/16/2017	28.06	28.07	0.01	4836.24
			6/15/2017	NA	27.15	0.00	4837.15
			9/14/2017	NA	26.04	0.00	4838.26
			12/19/2017	NA	28.24	0.00	4836.06
MW-9	4860.9	35.00	3/15/2018	NA	27.81	0.00	4836.49
			3/15/2016	NA	33.45	0.00	4827.45
			3/21/2016	NA	31.84	0.00	4829.06
			3/22/2016	NA	33.80	0.00	4827.10
			3/29/2016	NA	31.85	0.00	4829.05
			4/5/2016	NA	29.98	0.00	4830.92
			4/19/2016	NA	27.48	0.00	4833.42
			4/26/2016	NA	26.80	0.00	4834.10
			5/5/2016	NA	26.61	0.00	4834.29
			6/6/2016	NA	26.50	0.00	4834.40
			6/20/2016	NA	26.40	0.00	4834.50
			8/11/2016	NA	26.52	0.00	4834.38
			9/15/2016	NA	26.75	0.00	4834.15
			12/15/2016	NA	27.09	0.00	4833.81
			3/16/2017	NA	27.44	0.00	4833.46
			6/15/2017	NA	27.72	0.00	4833.18
			9/14/2017	NA	27.84	0.00	4833.06
			12/19/2017	NA	28.76	0.00	4832.14
MW-10	4867.7	39	3/15/2018	NA	27.48	0.00	4833.42
			3/15/2016	NA	Dry	0.00	
			3/21/2016	NA	Dry	0.00	
			3/22/2016	NA	Dry	0.00	
			3/29/2016	NA	Dry	0.00	
			4/5/2016	NA	39.12	0.00	4828.58
			4/19/2016	NA	38.19	0.00	4829.51
			4/26/2016	NA	37.78	0.00	4829.92
			5/5/2016	NA	37.58	0.00	4830.12
			6/6/2016	NA	37.35	0.00	4830.35
			6/20/2016	NA	37.32	0.00	4830.38
			8/11/2016	NA	37.20	0.00	4830.50
			9/15/2016	NA	37.13	0.00	4830.57
			12/15/2016	NA	36.89	0.00	4830.81
			3/16/2017	NA	36.75	0.00	4830.95
			6/15/2017	NA	36.41	0.00	4831.29
			9/14/2017	NA	35.78	0.00	4831.92
			12/19/2017	NA	34.63	0.00	4833.07
			3/15/2018	NA	33.60	0.00	4834.10



Table 3 - Gauging Data

Whiting Oil and Gas Corporation
Nelson C-1
Weld County, Colorado

Well ID	Top of Casing Elevation (ft amsl)	Total Depth of Well (ft)	Date Gauged	Depth to Product (ft btoc)	DTW (ft btoc)	Product Thickness (ft)	Potentiometric Surface Elevation (ft)
MW-11	4871.6	44.00	3/15/2016	NA	41.07	0.00	4830.53
			3/21/2016	NA	41.10	0.00	4830.50
			3/22/2016	NA	42.22	0.00	4829.38
			3/29/2016	NA	40.98	0.00	4830.62
			4/5/2016	NA	41.06	0.00	4830.54
			4/19/2016	NA	47.15	0.00	4824.45
			4/26/2016	NA	40.83	0.00	4830.77
			5/5/2016	NA	41.06	0.00	4830.54
			6/6/2016	NA	41.00	0.00	4830.60
			6/20/2016	NA	41.08	0.00	4830.52
			8/11/2016	NA	41.83	0.00	4829.77
			9/15/2016	NA	40.81	0.00	4830.79
			12/15/2016	NA	40.59	0.00	4831.01
			3/16/2017	NA	40.39	0.00	4831.21
			6/15/2017	NA	40.17	0.00	4831.43
			9/14/2017	NA	39.63	0.00	4831.97
			12/19/2017	NA	39.14	0.00	4832.46
			3/15/2018	NA	38.63	0.00	4832.97
MW-12	4870.1	38.00	3/15/2016	NA	Dry	0.00	
			3/21/2016	NA	Dry	0.00	
			3/22/2016	NA	Dry	0.00	
			3/29/2016	NA	Dry	0.00	
			4/5/2016	NA	40.09	0.00	4830.01
			4/19/2016	NA	39.46	0.00	4830.64
			4/26/2016	NA	39.28	0.00	4830.82
			5/5/2016	NA	39.16	0.00	4830.94
			6/6/2016	NA	38.94	0.00	4831.16
			6/20/2016	NA	38.91	0.00	4831.19
			8/11/2016	NA	38.83	0.00	4831.27
			9/15/2016	NA	38.78	0.00	4831.32
			12/15/2016	NA	38.67	0.00	4831.43
			3/16/2017	NA	38.61	0.00	4831.49
			6/15/2017	NA	38.45	0.00	4831.65
			9/14/2017	NA	38.35	0.00	4831.75
			12/19/2017	NA	38.10	0.00	4832.00
			3/15/2018	NA	37.88	0.00	4832.22
MW-13	4864.4	40.00	3/15/2016	NA	Dry	0.00	
			3/21/2016	NA	38.86	0.00	4825.54
			3/22/2016	NA	39.35	0.00	4825.05
			3/29/2016	NA	37.37	0.00	4827.03
			4/5/2016	NA	35.84	0.00	4828.56
			4/19/2016	NA	33.26	0.00	4831.14
			4/26/2016	NA	32.39	0.00	4832.01
			5/5/2016	NA	31.71	0.00	4832.69
			6/6/2016	NA	30.83	0.00	4833.57
			6/20/2016	NA	30.76	0.00	4833.64
			8/11/2016	NA	31.00	0.00	4833.40
			9/15/2016	NA	30.77	0.00	4833.63
			12/15/2016	NA	31.06	0.00	4833.34
			3/16/2017	NA	31.15	0.00	4833.25
			6/15/2017	NA	31.30	0.00	4833.10
			9/14/2017	NA	31.46	0.00	4832.94
			12/19/2017	NA	32.63	0.00	4831.77
			3/15/2018	NA	31.35	0.00	4833.05



Table 3 - Gauging Data

**Whiting Oil and Gas Corporation
Nelson C-1
Weld County, Colorado**

Well ID	Top of Casing Elevation (ft amsl)	Total Depth of Well (ft)	Date Gauged	Depth to Product (ft btoc)	DTW (ft btoc)	Product Thickness (ft)	Potentiometric Surface Elevation (ft)
MW-14	4863.7	40.00	3/15/2016	NA	29.62	0.00	4834.08
			3/21/2016	NA	29.55	0.00	4834.15
			3/22/2016	NA	29.35	0.00	4834.35
			3/29/2016	NA	29.37	0.00	4834.33
			4/5/2016	NA	29.64	0.00	4834.06
			4/19/2016	NA	29.85	0.00	4833.85
			4/26/2016	NA	29.51	0.00	4834.19
			5/5/2016	NA	29.79	0.00	4833.91
			6/6/2016	NA	29.73	0.00	4833.97
			6/20/2016	NA	29.94	0.00	4833.76
			8/11/2016	NA	29.71	0.00	4833.99
			9/15/2016	NA	29.80	0.00	4833.90
			12/15/2016	NA	29.87	0.00	4833.83
			3/16/2017	NA	30.29	0.00	4833.41
			6/15/2017	NA	30.65	0.00	4833.05
			9/14/2017	NA	30.42	0.00	4833.28
			12/19/2017	NA	30.63	0.00	4833.07
			3/15/2018	NA	30.11	0.00	4833.59
MW-15	4861.4	34.00	3/15/2016	NA	35.15	0.00	4826.25
			3/21/2016	NA	33.75	0.00	4827.65
			3/22/2016	NA	34.15	0.00	4827.25
			3/29/2016	NA	31.69	0.00	4829.71
			4/5/2016	NA	30.14	0.00	4831.26
			4/19/2016	NA	28.50	0.00	4832.90
			4/26/2016	NA	27.96	0.00	4833.44
			5/5/2016	NA	27.64	0.00	4833.76
			6/6/2016	NA	27.12	0.00	4834.28
			6/20/2016	NA	27.00	0.00	4834.40
			8/11/2016	NA	27.47	0.00	4833.93
			9/15/2016	NA	27.19	0.00	4834.21
			12/15/2016	NA	27.60	0.00	4833.80
			3/16/2017	NA	28.11	0.00	4833.29
			6/15/2017	NA	28.59	0.00	4832.81
			9/14/2017	28.92	28.99	0.07	4832.47
			12/19/2017	NA	29.10	0.00	4832.30
			3/15/2018	29.01	29.05	0.04	4832.38
MW-16	4863.4	39.00	3/15/2016	NA	35.52	0.00	4827.88
			3/21/2016	NA	32.67	0.00	4830.73
			3/22/2016	36.31	36.34	0.03	4827.08
			3/29/2016	NA	30.70	0.00	4832.70
			4/5/2016	NA	29.65	0.00	4833.75
			4/19/2016	NA	29.19	0.00	4834.21
			4/26/2016	NA	28.98	0.00	4834.42
			5/5/2016	NA	29.18	0.00	4834.22
			6/6/2016	NA	29.27	0.00	4834.13
			6/20/2016	NA	29.30	0.00	4834.10
			8/11/2016	NA	29.30	0.00	4834.10
			9/15/2016	NA	29.20	0.00	4834.20
			12/15/2016	NA	29.15	0.00	4834.25
			3/16/2017	NA	29.13	0.00	4834.27
			6/15/2017	NA	29.53	0.00	4833.87
			9/14/2017	NA	29.47	0.00	4833.93
			12/19/2017	NA	30.00	0.00	4833.40
			3/15/2018	NA	28.49	0.00	4834.91



Table 3 - Gauging Data

Whiting Oil and Gas Corporation
Nelson C-1
Weld County, Colorado

Well ID	Top of Casing Elevation (ft amsl)	Total Depth of Well (ft)	Date Gauged	Depth to Product (ft btoc)	DTW (ft btoc)	Product Thickness (ft)	Potentiometric Surface Elevation (ft)
MW-17	4866.0	44.00	3/16/2016	NA	Dry	0.00	
			3/21/2016	43.16	NA	0.84	
			3/22/2016	44.45	45.53	1.08	4821.34
			3/29/2016	39.16	43.55	4.39	4825.98
			4/5/2016	36.62	42.32	5.70	4828.26
			4/19/2016	34.22	42.25	8.03	4830.21
			4/26/2016	33.39	42.16	8.77	4830.89
			5/5/2016	33.04	42.05	9.01	4831.19
			6/6/2016	32.71	41.94	9.23	4831.48
			6/20/2016	36.13	43.14	7.01	4828.50
			8/11/2016	44.20	45.25	1.05	4821.59
			9/15/2016	40.19	43.34	3.15	4825.19
			12/15/2016	40.75	43.09	2.34	4824.79
			3/16/2017	38.92	41.12	2.20	4826.65
			6/15/2017	38.00	39.74	1.74	4827.66
			9/14/2017	NG	NG	NG	NG
			12/19/2017	33.50	35.59	2.09	4832.09
			3/15/2018	32.75	33.05	0.30	4833.19
MW-18	4868.6	44.00	3/16/2016	NA	38.87	0.00	4829.73
			3/21/2016	NA	37.72	0.00	4830.88
			3/22/2016	NA	38.10	0.00	4830.50
			3/29/2016	NA	37.55	0.00	4831.05
			4/5/2016	NA	37.74	0.00	4830.86
			4/19/2016	NA	37.87	0.00	4830.73
			4/26/2016	NA	37.55	0.00	4831.05
			5/5/2016	NA	37.79	0.00	4830.81
			6/6/2016	NA	37.75	0.00	4830.85
			6/20/2016	NA	37.90	0.00	4830.70
			8/11/2016	NA	37.63	0.00	4830.97
			9/15/2016	NA	37.56	0.00	4831.04
			12/15/2016	NA	37.33	0.00	4831.27
			3/16/2017	NA	37.29	0.00	4831.31
			6/15/2017	NA	37.49	0.00	4831.11
			9/14/2017	NA	36.60	0.00	4832.00
			12/19/2017	NA	28.90	0.00	4839.70
			3/15/2018	NA	35.45	0.00	4833.15
MW-19	4870.2	39.00	3/21/2016	NA	Dry	0.00	
			3/22/2016	NA	Dry	0.00	
			3/29/2016	NA	Dry	0.00	
			4/5/2016	NA	Dry	0.00	
			4/19/2016	NA	39.87	0.00	4830.33
			4/26/2016	NA	39.56	0.00	4830.64
			5/5/2016	NA	39.44	0.00	4830.76
			6/6/2016	NA	39.20	0.00	4831.00
			6/20/2016	NA	39.18	0.00	4831.02
			8/11/2016	NA	39.10	0.00	4831.10
			9/15/2016	NA	39.05	0.00	4831.15
			12/15/2016	NA	38.92	0.00	4831.28
			3/16/2017	NA	38.81	0.00	4831.39
			6/15/2017	NA	38.68	0.00	4831.52
			9/14/2017	NA	38.50	0.00	4831.70
			12/19/2017	NA	38.25	0.00	4831.95
			3/15/2018	NA	37.78	0.00	4832.42



Table 3 - Gauging Data

**Whiting Oil and Gas Corporation
Nelson C-1
Weld County, Colorado**

Well ID	Top of Casing Elevation (ft amsl)	Total Depth of Well (ft)	Date Gauged	Depth to Product (ft btoc)	DTW (ft btoc)	Product Thickness (ft)	Potentiometric Surface Elevation (ft)
MW-20	4867.0	39.00	3/21/2016	33.95	38.85	4.90	4832.09
			3/22/2016	38.35	40.21	1.86	4828.29
			3/29/2016	38.34	39.15	0.81	4828.50
			4/5/2016	33.52	38.88	5.36	4832.43
			4/19/2016	33.67	38.29	4.62	4832.42
			4/26/2016	33.26	38.05	4.79	4832.80
			5/5/2016	33.60	36.30	2.70	4832.87
			6/6/2016	33.85	38.85	5.00	4832.17
			6/20/2016	33.80	38.30	4.50	4832.32
			8/11/2016	35.02	38.32	3.30	4831.33
			9/15/2016	33.89	37.57	3.68	4832.39
			12/15/2016	34.10	35.90	1.80	4832.55
			3/16/2017	34.27	35.91	1.64	4832.41
			6/15/2017	34.27	35.88	1.61	4832.41
			9/14/2017	NG	NG	NG	NG
			12/19/2017	34.06	35.65	1.59	4832.63
			3/15/2018	33.95	34.99	1.04	4832.85
MW-21	4864.0	40.15	6/29/2017	NA	Dry	0.00	
			9/14/2017	30.78	32.29	1.51	4832.92
			12/19/2017	29.33	33.10	3.77	4833.93
			3/15/2018	29.68	29.80	0.12	4834.30
MW-22	4866.9	39.68	6/29/2017	35.69	35.88	0.19	4831.17
			9/14/2017	33.97	34.09	0.12	4832.91
			12/19/2017	NA	32.17	0.00	4834.73
			3/15/2018	NA	30.65	0.00	4836.25

NA - Not Applicable
 NG - Not Gauged
 DTW - Depth to Water
 ft btoc - Feet Below Top of Casing
 ft amsl - Feet Above Mean Sea Level



Table 4 - PSH Removal

**Whiting Oil and Gas Corporation
Nelson C-1
Weld County, Colorado**

Well ID	Date	Estimated PSH	Cumulative PSH
MW-1	Nov-15	0.00	0.00
	Dec-15	0.03	0.03
	Jan-16	0.00	0.03
	Feb-16	0.03	0.06
	Mar-16	0.00	0.06
	Apr-16	0.00	0.06
	May-16	0.00	0.06
	Jun-16	0.04	0.10
	Jul-17	0.03	0.13
MW-2	Dec-15	0.03	0.03
	Jan-16	0.00	0.03
	Feb-16	0.17	0.20
	Mar-16	0.00	0.20
	Apr-16	0.01	0.21
	May-16	0.00	0.21
	Jun-16	0.04	0.25
	Mar-17	0.03	0.28
	May-17	0.08	0.36
	Jun-17	0.01	0.38
	Jul-17	0.00	0.38
	Aug-17	0.00	0.38
	Dec-17	0.00	0.38
	Jan-18	0.00	0.38
	Feb-18	0.00	0.38
	Mar-18	0.01	0.39



Table 4 - PSH Removal

**Whiting Oil and Gas Corporation
Nelson C-1
Weld County, Colorado**

Well ID	Date	Estimated PSH	Cumulative PSH
MW-3	Dec-15	2.47	2.47
	Jan-16	2.02	4.49
	Feb-16	9.63	14.12
	Mar-16	1.93	16.05
	Apr-16	0.91	16.96
	May-16	0.48	17.44
	Jun-16	2.12	19.56
	Jul-16	4.50	24.06
	Aug-16	2.75	26.81
	Sep-16	2.47	29.29
	Oct-16	3.14	32.43
	Nov-16	2.08	34.51
	Dec-16	2.17	36.67
	Jan-17	1.98	38.65
	Feb-17	1.72	40.37
	Mar-17	1.47	41.84
	Apr-17	1.83	43.67
	May-17	1.49	45.16
	Jun-17	1.67	46.83
	Jul-17	1.14	47.96
	Aug-17	1.00	48.96
	Dec-17	0.22	49.19
	Jan-18	0.28	49.46
	Feb-18	0.21	49.67
	Mar-18	0.08	49.75
MW-4	Dec-15	0.00	0.00
	Jan-16	0.00	0.00
	Feb-16	0.00	0.00
	Mar-16	0.00	0.00
	Apr-16	0.00	0.00
	May-16	0.00	0.00
	Jun-16	0.00	0.00
	Jul-16	0.00	0.00



Table 4 - PSH Removal

**Whiting Oil and Gas Corporation
Nelson C-1
Weld County, Colorado**

Well ID	Date	Estimated PSH	Cumulative PSH
MW-5	Jun-16	1.50	1.50
	Jul-16	7.00	8.50
	Aug-16	2.41	10.91
	Sep-16	1.55	12.46
	Oct-16	2.49	14.95
	Nov-16	2.42	17.37
	Dec-16	2.67	20.04
	Jan-17	1.86	21.90
	Feb-17	2.20	24.10
	Mar-17	1.08	25.18
	Apr-17	1.96	27.14
	May-17	1.97	29.11
	Jun-17	1.83	30.95
	Jul-17	1.03	31.97
	Aug-17	0.94	32.92
	Dec-17	0.00	32.92
	Jan-18	0.19	33.11
	Feb-18	0.56	33.67
	Mar-18	0.04	33.71
MW-6	Jun-16	6.98	6.98
	Jul-16	10.50	17.48
	Aug-16	4.10	21.58
	Sep-16	2.56	24.14
	Oct-16	4.05	28.19
	Nov-16	3.05	31.24
	Dec-16	2.51	33.75
	Jan-17	1.60	35.36
	Feb-17	2.56	37.91
	Mar-17	1.06	38.97
	Apr-17	1.35	40.32
	May-17	1.08	41.40
	Jun-17	1.44	42.84
	Jul-17	0.64	43.48
	Aug-17	0.53	44.01
	Sep-17	0.44	44.46
	Dec-17	0.19	44.65
	Jan-18	0.15	44.80
	Feb-18	0.01	44.82
	Mar-18	0.03	44.84



Table 4 - PSH Removal

**Whiting Oil and Gas Corporation
Nelson C-1
Weld County, Colorado**

Well ID	Date	Estimated PSH	Cumulative PSH
MW-7	Jun-16	3.73	3.73
	Jul-16	10.50	14.23
	Aug-16	3.06	17.29
	Sep-16	2.75	20.04
	Oct-16	2.70	22.74
	Nov-16	2.14	24.88
	Dec-16	1.78	26.66
	Jan-17	1.77	28.43
	Feb-17	2.23	30.66
	Mar-17	1.11	31.77
	Apr-17	1.71	33.48
	May-17	1.36	34.84
	Jun-17	1.06	35.90
	Jul-17	0.58	36.48
	Aug-17	0.61	37.09
	Dec-17	2.47	39.56
	Jan-18	1.56	41.12
	Feb-18	1.39	42.51
	Mar-18	1.19	43.70
MW-17	Jun-16	9.03	9.03
	Jul-16	22.00	31.03
	Aug-16	7.68	38.71
	Sep-16	3.86	42.57
	Oct-16	6.60	49.17
	Nov-16	5.13	54.30
	Dec-16	5.03	59.32
	Jan-17	2.91	62.23
	Feb-17	2.84	65.07
	Mar-17	3.06	68.13
	Apr-17	4.11	72.24
	May-17	3.96	76.20
	Jun-17	2.75	78.95
	Jul-17	1.54	80.49
	Aug-17	0.78	81.27
	Dec-17	2.00	83.27
	Jan-18	1.53	84.80
	Feb-18	1.81	86.60
	Mar-18	0.50	87.10



Table 4 - PSH Removal

**Whiting Oil and Gas Corporation
Nelson C-1
Weld County, Colorado**

Well ID	Date	Estimated PSH	Cumulative PSH
MW-20	Jun-16	7.27	7.27
	Jul-16	36.00	43.27
	Aug-16	27.11	70.38
	Sep-16	12.30	82.68
	Oct-16	13.42	96.10
	Nov-16	8.59	104.69
	Dec-16	6.27	110.97
	Jan-17	5.01	115.97
	Feb-17	3.75	119.72
	Mar-17	2.67	122.39
	Apr-17	5.86	128.25
	May-17	5.89	134.14
	Jun-17	4.83	138.97
	Jul-17	2.92	141.89
	Aug-17	3.56	145.45
	Dec-17	2.81	148.25
	Jan-18	6.03	154.28
	Feb-18	5.36	159.64
	Mar-18	2.17	161.81
MW-21	Jul-17	0.15	0.15
	Aug-17	0.06	0.21
	Dec-17	5.17	5.38
	Jan-18	1.38	6.75
	Feb-18	0.00	6.75
	Mar-18	0.58	7.33
MW-22	Dec-17	0.00	0.00
	Jan-18	0.00	0.00
	Feb-18	0.00	0.00
	Mar-18	0.00	0.00
Site Total			428.76
*Total Fluid Recovered was calculated by adding daily bailing volume between the dates gauged Product Recovery calculation method changed after 6/20/16 to estimating product recovery from each PSH - Phase Separated Hydrocarbons			

Attachment 3
Analytical Reports

Summit Scientific

741 Corporate Circle – Suite I ♦ Golden, Colorado 80401

303.277.9310 - laboratory ♦ 303.277.9531 - fax

March 29, 2018

Jennifer Galles
Talon/LPE
1811 E Mulberry
Ft Collins, CO 80524
RE: Nelson C1

Enclosed are the results of analyses for samples received by Summit Scientific on 03/16/18 16:03. If you have any questions concerning this report, please feel free to contact me.

Sincerely,

A handwritten signature in black ink, appearing to read 'P. Shrewsbury', with a stylized, cursive script.

Paul Shrewsbury
President



Talon/LPE
1811 E Mulberry
Ft Collins CO, 80524

Project: Nelson C1

Project Number: 701530.020.11
Project Manager: Jennifer Galles

Reported:
03/29/18 15:01

ANALYTICAL REPORT FOR SAMPLES

Sample ID	Laboratory ID	Matrix	Date Sampled	Date Received
MW-1	1803216-01	Water	03/16/18 12:15	03/16/18 16:03
MW-2	1803216-02	Water	03/16/18 12:18	03/16/18 16:03
MW-4	1803216-03	Water	03/16/18 12:13	03/16/18 16:03
MW-6	1803216-04	Water	03/16/18 12:23	03/16/18 16:03
MW-8	1803216-05	Water	03/16/18 12:10	03/16/18 16:03
MW-9	1803216-06	Water	03/16/18 10:47	03/16/18 16:03
MW-10	1803216-07	Water	03/16/18 11:59	03/16/18 16:03
MW-11	1803216-08	Water	03/16/18 11:23	03/16/18 16:03
MW-12	1803216-09	Water	03/16/18 11:08	03/16/18 16:03
MW-13	1803216-10	Water	03/16/18 11:04	03/16/18 16:03
MW-14	1803216-11	Water	03/16/18 11:00	03/16/18 16:03
MW-15	1803216-12	Water	03/16/18 10:53	03/16/18 16:03
MW-16	1803216-13	Water	03/16/18 12:07	03/16/18 16:03
MW-18	1803216-14	Water	03/16/18 11:28	03/16/18 16:03
MW-19	1803216-15	Water	03/16/18 11:18	03/16/18 16:03
MW-22	1803216-16	Water	03/16/18 12:03	03/16/18 16:03
Dup	1803216-17	Water	03/16/18 00:00	03/16/18 16:03

Summit Scientific

The results in this report apply to the samples analyzed in accordance with the chain of custody document. This analytical report must be reproduced in its entirety.

Talon/LPE
1811 E Mulberry
Ft Collins CO, 80524

Project: Nelson C1

Project Number: 701530.020.11
Project Manager: Jennifer Galles

Reported:
03/29/18 15:01

Summit Scientific

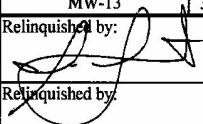
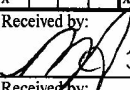
1803216.1

741 Corporate Circle Suite I ♦ Golden, Colorado 80401
303-277-9310 ♦ 303-374-5933 Fax

Page 1 of 2 ~~2~~ ~~2~~

Client:	Talon/LPE - Bill Whiting
Address:	1811 East Mulberry
City/State/Zip:	Fort Collins, CO 80525
Phone:	970-818-5330
Fax:	
Sampler Name:	Jason Leverton

Project Manager:	Jennifer Galles
E-Mail:	csterling@talonlpe.com and jgalles@talonlpe.com
Project Name:	Nelson C1
Project Number:	701530.020.11

				Preservative				Matrix				Analyze For:								
Sample Description	Date Sampled	Time Sampled	Number of Containers	HCl	HNO ₃	None	Other (Specify)	Groundwater	Soil	Air - Canister Serial #	Other (Specify)	BTEX							Special Instructions	
MW-1	3/16/2018	1215	3	x				x				x								
MW-2	3/16/2018	1218	3	x				x				x								
MW-4	3/16/2018	1213	3	x				x				x								
MW-6	3/16/2018	1223	3	x				x				x								
MW-8	3/16/2018	1210	3	x				x				x								
MW-9	3/16/2018	1047	3	x				x				x								
MW-10	3/16/2018	1159	3	x				x				x								
MW-11	3/16/2018	1123	3	x				x				x								
MW-12	3/16/2018	1108	3	x				x				x								
MW-13	3/16/2018	1104	3	x				x				x								
Relinquished by: 			Date/Time: 3-16-18 16:03		Received by: 		Date/Time: 3/16/18 1603		Turn Around Time (Check)										Notes:	
Relinquished by:			Date/Time:		Received by:		Date/Time:		Same Day <input type="checkbox"/>				72 Hours <input type="checkbox"/>							
Relinquished by:			Date/Time:		Received by:		Date/Time:		24 Hours <input type="checkbox"/>				Standard <input checked="" type="checkbox"/>							
Relinquished by:			Date/Time:		Received in Lab by:		Date/Time:		Sample Integrity: Temperature Upon Receipt: 19.4°C											
									Intact: YES <input type="checkbox"/> NO <input type="checkbox"/>											

www.s2scientific.com

Summit Scientific

The results in this report apply to the samples analyzed in accordance with the chain of custody document. This analytical report must be reproduced in its entirety.



Talon/LPE
1811 E Mulberry
Ft Collins CO, 80524

Project: Nelson C1

Project Number: 701530.020.11
Project Manager: Jennifer Galles

Reported:
03/29/18 15:01

Summit Scientific

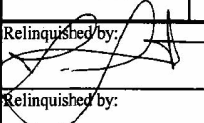
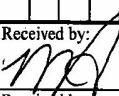
1803216.2

741 Corporate Circle Suite I ♦ Golden, Colorado 80401
303-277-9310 ♦ 303-374-5933 Fax

Page 2 of 2

Client:	Talon/LPE - Bill Whiting		
Address:	1811 East Mulberry		
City/State/Zip:	Fort Collins, CO 80525		
Phone:	970-818-5330	Fax:	
Sampler Name:	Jason Leverton/Levi Kirk		

Project Manager:	Jennifer Galles
E-Mail:	csterling@talonlpe.com and jgalles@talonlpe.com
Project Name:	Nelson C1
Project Number:	701530.020.11

				Preservative				Matrix				Analyze For:														
Sample Description	Date Sampled	Time Sampled	Number of Containers	HCl	HNO ₃	None	Other (Specify)	Groundwater	Soil	Air - Canister Serial #	Other (Specify)	BTEX													Special Instructions	
MW-14	3/16/2018	1100	3	x				x				x														
MW-15	3/16/2018	1053	3	x				x				x														
MW-16	3/16/2018	1207	3	x				x				x														
MW-18	3/16/2018	1128	3	x				x				x														
MW-19	3/16/2018	1118	3	x				x				x														
MW-22	3/16/2018	1203	3	x				x				x														
Relinquished by: 				Date/Time: 3.16.18 16:03				Received by: 				Date/Time: 3/16/18 1603				Turn Around Time (Check) Same Day <input type="checkbox"/> 72 Hours <input type="checkbox"/> 24 Hours <input type="checkbox"/> Standard <input checked="" type="checkbox"/> 48 Hours <input type="checkbox"/>										Notes:
Relinquished by:				Date/Time:				Received by:				Date/Time:				Sample Integrity: Temperature Upon Receipt: 19.4°C Intact: <input checked="" type="radio"/> Yes <input type="radio"/> No										

www.s2scientific.com

Summit Scientific

The results in this report apply to the samples analyzed in accordance with the chain of custody document. This analytical report must be reproduced in its entirety.





Talon/LPE
1811 E Mulberry
Ft Collins CO, 80524

Project: Nelson C1
Project Number: 701530.020.11
Project Manager: Jennifer Galles

Reported:
03/29/18 15:01

Sample Receipt Checklist

S2 Work Order: 1803216

Client: Talon/LPE

Client Project ID: Nelson C1

Shipped Via: P/U

(UPS, FedEx, Hand Delivered, Pick-up, etc.)

Airbill #: _____

Matrix (check all that apply): ☐ Air ☐ Soil/Solid ☒ Water ☐ Other: _____ (Describe)

Cooler ID					
Temp (°C)	19.4				

Thermometer ID: 61857155-K

	Yes	No	N/A	Comments (if any)
If samples require cooling, was the temperature just above 0°C to ≤ 6°C ⁽¹⁾ ?		✓		
NOTE: If samples are delivered the same day of sampling, this requirement is waived provided that there is evidence that cooling has begun.				
Were all samples received intact ⁽¹⁾ ?	✓			
Was adequate sample volume provided ⁽¹⁾ ?	✓			
If custody seals are present, are they intact ⁽¹⁾ ?			✓	
Are short holding time analytes or samples with HTs due within 48 hours present?			✓	
Is a chain-of-custody (COC) form present and filled out completely ⁽¹⁾ ?	✓			
Does the COC agree with the number and type of sample bottles received ⁽¹⁾ ?	✓			
Do the sample IDs on the bottle labels match the COC ⁽¹⁾ ?	✓			
Is the COC properly relinquished by the client w/ date and time recorded ⁽¹⁾ ?	✓			
For volatiles in water – is there headspace present? If yes, contact client and note in narrative.		✓		
Are samples preserved that require preservation (excluding cooling) ⁽¹⁾ ?	✓			HCl
Note the type of preservative in the Comments column – HCl, H ₂ SO ₄ , NaOH, HNO ₃ , ect				
If samples are acid preserved for metals, is the pH ≤ 2 ⁽¹⁾ ?			✓	
Record the pH in Comments.				
If dissolved metals are requested, were samples field filtered?			✓	
Additional Comments (if any):				
(1) If NO, then contact the client before proceeding with analysis and note in case narrative.				

Nakita
Custodian Printed Name

[Signature]
Signature or Initials of Custodian

3/16/18 1730
Date/Time



Talon/LPE
1811 E Mulberry
Ft Collins CO, 80524

Project: Nelson C1
Project Number: 701530.020.11
Project Manager: Jennifer Galles

Reported:
03/29/18 15:01

MW-1
1803216-01 (Water)

Summit Scientific

Volatile Organic Compounds by EPA Method 8260B

Date Sampled: **03/16/18 12:15**

Analyte	Result	Reporting		Units	Dilution	Batch	Prepared	Analyzed	Method	Notes
		Limit								
Benzene	11000	100		ug/l	100	1803232	03/20/18	03/20/18	EPA 8260B	
Toluene	11000	100		"	"	"	"	"	"	
Ethylbenzene	910	100		"	"	"	"	"	"	
Xylenes (total)	6000	200		"	"	"	"	"	"	

Date Sampled: **03/16/18 12:15**

Analyte	Result	Reporting		Units	Dilution	Batch	Prepared	Analyzed	Method	Notes
		Limit								
Surrogate: 1,2-Dichloroethane-d4		91.4 %		37-154		"	"	"	"	
Surrogate: Toluene-d8		97.3 %		45-149		"	"	"	"	
Surrogate: 4-Bromofluorobenzene		97.8 %		45-146		"	"	"	"	

Summit Scientific

The results in this report apply to the samples analyzed in accordance with the chain of custody document. This analytical report must be reproduced in its entirety.



Talon/LPE
1811 E Mulberry
Ft Collins CO, 80524

Project: Nelson C1
Project Number: 701530.020.11
Project Manager: Jennifer Galles

Reported:
03/29/18 15:01

MW-2
1803216-02 (Water)

Summit Scientific

Volatile Organic Compounds by EPA Method 8260B

Date Sampled: **03/16/18 12:18**

Analyte	Result	Reporting Limit	Units	Dilution	Batch	Prepared	Analyzed	Method	Notes
Benzene	13000	100	ug/l	100	1803232	03/20/18	03/20/18	EPA 8260B	
Toluene	12000	100	"	"	"	"	"	"	
Ethylbenzene	1100	100	"	"	"	"	"	"	
Xylenes (total)	7600	200	"	"	"	"	"	"	

Date Sampled: **03/16/18 12:18**

Analyte	Result	Reporting Limit	Units	Dilution	Batch	Prepared	Analyzed	Method	Notes
<i>Surrogate: 1,2-Dichloroethane-d4</i>		83.3 %	37-154		"	"	"	"	
<i>Surrogate: Toluene-d8</i>		87.5 %	45-149		"	"	"	"	
<i>Surrogate: 4-Bromofluorobenzene</i>		99.7 %	45-146		"	"	"	"	

Summit Scientific

The results in this report apply to the samples analyzed in accordance with the chain of custody document. This analytical report must be reproduced in its entirety.



Talon/LPE
1811 E Mulberry
Ft Collins CO, 80524

Project: Nelson C1
Project Number: 701530.020.11
Project Manager: Jennifer Galles

Reported:
03/29/18 15:01

MW-4
1803216-03 (Water)

Summit Scientific

Volatile Organic Compounds by EPA Method 8260B

Date Sampled: **03/16/18 12:13**

Analyte	Result	Reporting Limit	Units	Dilution	Batch	Prepared	Analyzed	Method	Notes
Benzene	8400	100	ug/l	100	1803232	03/20/18	03/20/18	EPA 8260B	
Toluene	9800	100	"	"	"	"	"	"	
Ethylbenzene	860	100	"	"	"	"	"	"	
Xylenes (total)	6900	200	"	"	"	"	"	"	

Date Sampled: **03/16/18 12:13**

Analyte	Result	Reporting Limit	Units	Dilution	Batch	Prepared	Analyzed	Method	Notes
<i>Surrogate: 1,2-Dichloroethane-d4</i>		84.3 %	37-154		"	"	"	"	
<i>Surrogate: Toluene-d8</i>		92.3 %	45-149		"	"	"	"	
<i>Surrogate: 4-Bromofluorobenzene</i>		98.9 %	45-146		"	"	"	"	

Summit Scientific

The results in this report apply to the samples analyzed in accordance with the chain of custody document. This analytical report must be reproduced in its entirety.



Talon/LPE
1811 E Mulberry
Ft Collins CO, 80524

Project: Nelson C1
Project Number: 701530.020.11
Project Manager: Jennifer Galles

Reported:
03/29/18 15:01

MW-6
1803216-04 (Water)

Summit Scientific

Volatile Organic Compounds by EPA Method 8260B

Date Sampled: **03/16/18 12:23**

Analyte	Result	Reporting Limit	Units	Dilution	Batch	Prepared	Analyzed	Method	Notes
Benzene	10000	100	ug/l	100	1803232	03/20/18	03/20/18	EPA 8260B	
Toluene	9900	100	"	"	"	"	"	"	
Ethylbenzene	1100	100	"	"	"	"	"	"	
Xylenes (total)	5900	200	"	"	"	"	"	"	

Date Sampled: **03/16/18 12:23**

Analyte	Result	Reporting Limit	Units	Dilution	Batch	Prepared	Analyzed	Method	Notes
<i>Surrogate: 1,2-Dichloroethane-d4</i>		84.2 %	37-154		"	"	"	"	
<i>Surrogate: Toluene-d8</i>		92.3 %	45-149		"	"	"	"	
<i>Surrogate: 4-Bromofluorobenzene</i>		98.0 %	45-146		"	"	"	"	

Summit Scientific

The results in this report apply to the samples analyzed in accordance with the chain of custody document. This analytical report must be reproduced in its entirety.



Talon/LPE
1811 E Mulberry
Ft Collins CO, 80524

Project: Nelson C1
Project Number: 701530.020.11
Project Manager: Jennifer Galles

Reported:
03/29/18 15:01

MW-8
1803216-05 (Water)

Summit Scientific

Volatile Organic Compounds by EPA Method 8260B

Date Sampled: **03/16/18 12:10**

Analyte	Result	Reporting Limit	Units	Dilution	Batch	Prepared	Analyzed	Method	Notes
Benzene	11000	100	ug/l	100	1803232	03/20/18	03/20/18	EPA 8260B	
Toluene	13000	100	"	"	"	"	"	"	
Ethylbenzene	740	100	"	"	"	"	"	"	
Xylenes (total)	6900	200	"	"	"	"	"	"	

Date Sampled: **03/16/18 12:10**

Analyte	Result	Reporting Limit	Units	Dilution	Batch	Prepared	Analyzed	Method	Notes
<i>Surrogate: 1,2-Dichloroethane-d4</i>		89.2 %	37-154		"	"	"	"	
<i>Surrogate: Toluene-d8</i>		99.0 %	45-149		"	"	"	"	
<i>Surrogate: 4-Bromofluorobenzene</i>		98.2 %	45-146		"	"	"	"	

Summit Scientific

The results in this report apply to the samples analyzed in accordance with the chain of custody document. This analytical report must be reproduced in its entirety.



Talon/LPE
1811 E Mulberry
Ft Collins CO, 80524

Project: Nelson C1
Project Number: 701530.020.11
Project Manager: Jennifer Galles

Reported:
03/29/18 15:01

MW-9
1803216-06 (Water)

Summit Scientific

Volatile Organic Compounds by EPA Method 8260B

Date Sampled: **03/16/18 10:47**

Analyte	Result	Reporting Limit	Units	Dilution	Batch	Prepared	Analyzed	Method	Notes
Benzene	3.5	1.0	ug/l	1	1803232	03/20/18	03/20/18	EPA 8260B	
Toluene	8.5	1.0	"	"	"	"	"	"	
Ethylbenzene	1.1	1.0	"	"	"	"	"	"	
Xylenes (total)	9.9	2.0	"	"	"	"	"	"	

Date Sampled: **03/16/18 10:47**

Analyte	Result	Reporting Limit	Units	Dilution	Batch	Prepared	Analyzed	Method	Notes
<i>Surrogate: 1,2-Dichloroethane-d4</i>		83.9 %	37-154		"	"	"	"	
<i>Surrogate: Toluene-d8</i>		89.9 %	45-149		"	"	"	"	
<i>Surrogate: 4-Bromofluorobenzene</i>		93.8 %	45-146		"	"	"	"	

Summit Scientific

The results in this report apply to the samples analyzed in accordance with the chain of custody document. This analytical report must be reproduced in its entirety.



Talon/LPE
1811 E Mulberry
Ft Collins CO, 80524

Project: Nelson C1
Project Number: 701530.020.11
Project Manager: Jennifer Galles

Reported:
03/29/18 15:01

MW-10
1803216-07 (Water)

Summit Scientific

Volatile Organic Compounds by EPA Method 8260B

Date Sampled: **03/16/18 11:59**

Analyte	Result	Reporting Limit	Units	Dilution	Batch	Prepared	Analyzed	Method	Notes
Benzene	1.6	1.0	ug/l	1	1803232	03/20/18	03/20/18	EPA 8260B	
Toluene	3.8	1.0	"	"	"	"	"	"	
Ethylbenzene	ND	1.0	"	"	"	"	"	"	
Xylenes (total)	3.1	2.0	"	"	"	"	"	"	

Date Sampled: **03/16/18 11:59**

Analyte	Result	Reporting Limit	Units	Dilution	Batch	Prepared	Analyzed	Method	Notes
Surrogate: 1,2-Dichloroethane-d4		85.8 %	37-154		"	"	"	"	
Surrogate: Toluene-d8		89.8 %	45-149		"	"	"	"	
Surrogate: 4-Bromofluorobenzene		97.1 %	45-146		"	"	"	"	

Summit Scientific

The results in this report apply to the samples analyzed in accordance with the chain of custody document. This analytical report must be reproduced in its entirety.



Talon/LPE
1811 E Mulberry
Ft Collins CO, 80524

Project: Nelson C1
Project Number: 701530.020.11
Project Manager: Jennifer Galles

Reported:
03/29/18 15:01

MW-11
1803216-08 (Water)

Summit Scientific

Volatile Organic Compounds by EPA Method 8260B

Date Sampled: **03/16/18 11:23**

Analyte	Result	Reporting Limit	Units	Dilution	Batch	Prepared	Analyzed	Method	Notes
Benzene	5.3	1.0	ug/l	1	1803232	03/21/18	03/21/18	EPA 8260B	
Toluene	4.1	1.0	"	"	"	"	"	"	
Ethylbenzene	ND	1.0	"	"	"	"	"	"	
Xylenes (total)	4.3	2.0	"	"	"	"	"	"	

Date Sampled: **03/16/18 11:23**

Analyte	Result	Reporting Limit	Units	Dilution	Batch	Prepared	Analyzed	Method	Notes
Surrogate: 1,2-Dichloroethane-d4		84.1 %	37-154		"	"	"	"	
Surrogate: Toluene-d8		89.9 %	45-149		"	"	"	"	
Surrogate: 4-Bromofluorobenzene		97.3 %	45-146		"	"	"	"	

Summit Scientific

The results in this report apply to the samples analyzed in accordance with the chain of custody document. This analytical report must be reproduced in its entirety.



Talon/LPE
1811 E Mulberry
Ft Collins CO, 80524

Project: Nelson C1
Project Number: 701530.020.11
Project Manager: Jennifer Galles

Reported:
03/29/18 15:01

MW-12
1803216-09 (Water)

Summit Scientific

Volatile Organic Compounds by EPA Method 8260B

Date Sampled: **03/16/18 11:08**

Analyte	Result	Reporting Limit	Units	Dilution	Batch	Prepared	Analyzed	Method	Notes
Benzene	ND	1.0	ug/l	1	1803232	03/21/18	03/21/18	EPA 8260B	
Toluene	1.7	1.0	"	"	"	"	"	"	
Ethylbenzene	ND	1.0	"	"	"	"	"	"	
Xylenes (total)	ND	2.0	"	"	"	"	"	"	

Date Sampled: **03/16/18 11:08**

Analyte	Result	Reporting Limit	Units	Dilution	Batch	Prepared	Analyzed	Method	Notes
Surrogate: 1,2-Dichloroethane-d4		89.4 %	37-154		"	"	"	"	
Surrogate: Toluene-d8		93.8 %	45-149		"	"	"	"	
Surrogate: 4-Bromofluorobenzene		101 %	45-146		"	"	"	"	

Summit Scientific

The results in this report apply to the samples analyzed in accordance with the chain of custody document. This analytical report must be reproduced in its entirety.



Talon/LPE
1811 E Mulberry
Ft Collins CO, 80524

Project: Nelson C1
Project Number: 701530.020.11
Project Manager: Jennifer Galles

Reported:
03/29/18 15:01

MW-13
1803216-10 (Water)

Summit Scientific

Volatile Organic Compounds by EPA Method 8260B

Date Sampled: **03/16/18 11:04**

Analyte	Result	Reporting Limit	Units	Dilution	Batch	Prepared	Analyzed	Method	Notes
Benzene	ND	1.0	ug/l	1	1803232	03/21/18	03/21/18	EPA 8260B	
Toluene	ND	1.0	"	"	"	"	"	"	
Ethylbenzene	ND	1.0	"	"	"	"	"	"	
Xylenes (total)	ND	2.0	"	"	"	"	"	"	

Date Sampled: **03/16/18 11:04**

Analyte	Result	Reporting Limit	Units	Dilution	Batch	Prepared	Analyzed	Method	Notes
Surrogate: 1,2-Dichloroethane-d4		90.6 %	37-154		"	"	"	"	
Surrogate: Toluene-d8		93.2 %	45-149		"	"	"	"	
Surrogate: 4-Bromofluorobenzene		98.3 %	45-146		"	"	"	"	

Summit Scientific

The results in this report apply to the samples analyzed in accordance with the chain of custody document. This analytical report must be reproduced in its entirety.



Talon/LPE
1811 E Mulberry
Ft Collins CO, 80524

Project: Nelson C1
Project Number: 701530.020.11
Project Manager: Jennifer Galles

Reported:
03/29/18 15:01

MW-14
1803216-11 (Water)

Summit Scientific

Volatile Organic Compounds by EPA Method 8260B

Date Sampled: **03/16/18 11:00**

Analyte	Result	Reporting Limit	Units	Dilution	Batch	Prepared	Analyzed	Method	Notes
Benzene	1600	100	ug/l	100	1803232	03/21/18	03/21/18	EPA 8260B	
Toluene	53	1.0	"	1	"	"	"	"	
Ethylbenzene	200	1.0	"	"	"	"	"	"	
Xylenes (total)	380	200	"	100	"	"	"	"	

Date Sampled: **03/16/18 11:00**

Analyte	Result	Reporting Limit	Units	Dilution	Batch	Prepared	Analyzed	Method	Notes
<i>Surrogate: 1,2-Dichloroethane-d4</i>		85.2 %	37-154		"	"	"	"	
<i>Surrogate: Toluene-d8</i>		89.3 %	45-149		"	"	"	"	
<i>Surrogate: 4-Bromofluorobenzene</i>		97.6 %	45-146		"	"	"	"	

Summit Scientific

The results in this report apply to the samples analyzed in accordance with the chain of custody document. This analytical report must be reproduced in its entirety.



Talon/LPE
1811 E Mulberry
Ft Collins CO, 80524

Project: Nelson C1
Project Number: 701530.020.11
Project Manager: Jennifer Galles

Reported:
03/29/18 15:01

MW-15
1803216-12 (Water)

Summit Scientific

Volatile Organic Compounds by EPA Method 8260B

Date Sampled: **03/16/18 10:53**

Analyte	Result	Reporting Limit	Units	Dilution	Batch	Prepared	Analyzed	Method	Notes
Benzene	2500	100	ug/l	100	1803232	03/21/18	03/21/18	EPA 8260B	
Toluene	1800	100	"	"	"	"	"	"	
Ethylbenzene	510	100	"	"	"	"	"	"	
Xylenes (total)	3700	200	"	"	"	"	"	"	

Date Sampled: **03/16/18 10:53**

Analyte	Result	Reporting Limit	Units	Dilution	Batch	Prepared	Analyzed	Method	Notes
<i>Surrogate: 1,2-Dichloroethane-d4</i>		89.6 %	37-154		"	"	"	"	
<i>Surrogate: Toluene-d8</i>		98.8 %	45-149		"	"	"	"	
<i>Surrogate: 4-Bromofluorobenzene</i>		100 %	45-146		"	"	"	"	

Summit Scientific

The results in this report apply to the samples analyzed in accordance with the chain of custody document. This analytical report must be reproduced in its entirety.



Talon/LPE
1811 E Mulberry
Ft Collins CO, 80524

Project: Nelson C1
Project Number: 701530.020.11
Project Manager: Jennifer Galles

Reported:
03/29/18 15:01

MW-16
1803216-13 (Water)

Summit Scientific

Volatile Organic Compounds by EPA Method 8260B

Date Sampled: **03/16/18 12:07**

Analyte	Result	Reporting Limit	Units	Dilution	Batch	Prepared	Analyzed	Method	Notes
Benzene	11000	100	ug/l	100	1803232	03/21/18	03/21/18	EPA 8260B	
Toluene	11000	100	"	"	"	"	"	"	
Ethylbenzene	860	100	"	"	"	"	"	"	
Xylenes (total)	5200	200	"	"	"	"	"	"	

Date Sampled: **03/16/18 12:07**

Analyte	Result	Reporting Limit	Units	Dilution	Batch	Prepared	Analyzed	Method	Notes
<i>Surrogate: 1,2-Dichloroethane-d4</i>		91.4 %	37-154		"	"	"	"	
<i>Surrogate: Toluene-d8</i>		97.1 %	45-149		"	"	"	"	
<i>Surrogate: 4-Bromofluorobenzene</i>		97.5 %	45-146		"	"	"	"	

Summit Scientific

The results in this report apply to the samples analyzed in accordance with the chain of custody document. This analytical report must be reproduced in its entirety.



Talon/LPE
1811 E Mulberry
Ft Collins CO, 80524

Project: Nelson C1
Project Number: 701530.020.11
Project Manager: Jennifer Galles

Reported:
03/29/18 15:01

MW-18
1803216-14 (Water)

Summit Scientific

Volatile Organic Compounds by EPA Method 8260B

Date Sampled: **03/16/18 11:28**

Analyte	Result	Reporting Limit	Units	Dilution	Batch	Prepared	Analyzed	Method	Notes
Benzene	420	100	ug/l	100	1803232	03/22/18	03/22/18	EPA 8260B	
Toluene	61	1.0	"	1	"	"	"	"	
Ethylbenzene	8.1	1.0	"	"	"	"	"	"	
Xylenes (total)	40	2.0	"	"	"	"	"	"	

Date Sampled: **03/16/18 11:28**

Analyte	Result	Reporting Limit	Units	Dilution	Batch	Prepared	Analyzed	Method	Notes
<i>Surrogate: 1,2-Dichloroethane-d4</i>		97.0 %	37-154		"	"	"	"	
<i>Surrogate: Toluene-d8</i>		99.7 %	45-149		"	"	"	"	
<i>Surrogate: 4-Bromofluorobenzene</i>		98.0 %	45-146		"	"	"	"	

Summit Scientific

The results in this report apply to the samples analyzed in accordance with the chain of custody document. This analytical report must be reproduced in its entirety.



Talon/LPE
1811 E Mulberry
Ft Collins CO, 80524

Project: Nelson C1
Project Number: 701530.020.11
Project Manager: Jennifer Galles

Reported:
03/29/18 15:01

MW-19
1803216-15 (Water)

Summit Scientific

Volatile Organic Compounds by EPA Method 8260B

Date Sampled: **03/16/18 11:18**

Analyte	Result	Reporting Limit	Units	Dilution	Batch	Prepared	Analyzed	Method	Notes
Benzene	ND	1.0	ug/l	1	1803232	03/22/18	03/22/18	EPA 8260B	
Toluene	ND	1.0	"	"	"	"	"	"	
Ethylbenzene	ND	1.0	"	"	"	"	"	"	
Xylenes (total)	ND	2.0	"	"	"	"	"	"	

Date Sampled: **03/16/18 11:18**

Analyte	Result	Reporting Limit	Units	Dilution	Batch	Prepared	Analyzed	Method	Notes
Surrogate: 1,2-Dichloroethane-d4		91.7 %	37-154		"	"	"	"	
Surrogate: Toluene-d8		95.9 %	45-149		"	"	"	"	
Surrogate: 4-Bromofluorobenzene		100 %	45-146		"	"	"	"	

Summit Scientific

The results in this report apply to the samples analyzed in accordance with the chain of custody document. This analytical report must be reproduced in its entirety.



Talon/LPE
1811 E Mulberry
Ft Collins CO, 80524

Project: Nelson C1
Project Number: 701530.020.11
Project Manager: Jennifer Galles

Reported:
03/29/18 15:01

MW-22
1803216-16 (Water)

Summit Scientific

Volatile Organic Compounds by EPA Method 8260B

Date Sampled: **03/16/18 12:03**

Analyte	Result	Reporting Limit	Units	Dilution	Batch	Prepared	Analyzed	Method	Notes
Benzene	3000	100	ug/l	100	1803232	03/22/18	03/22/18	EPA 8260B	
Toluene	6800	100	"	"	"	"	"	"	
Ethylbenzene	560	100	"	"	"	"	"	"	
Xylenes (total)	4000	200	"	"	"	"	"	"	

Date Sampled: **03/16/18 12:03**

Analyte	Result	Reporting Limit	Units	Dilution	Batch	Prepared	Analyzed	Method	Notes
<i>Surrogate: 1,2-Dichloroethane-d4</i>		86.0 %	37-154		"	"	"	"	
<i>Surrogate: Toluene-d8</i>		99.6 %	45-149		"	"	"	"	
<i>Surrogate: 4-Bromofluorobenzene</i>		100 %	45-146		"	"	"	"	

Summit Scientific

The results in this report apply to the samples analyzed in accordance with the chain of custody document. This analytical report must be reproduced in its entirety.



Talon/LPE
1811 E Mulberry
Ft Collins CO, 80524

Project: Nelson C1
Project Number: 701530.020.11
Project Manager: Jennifer Galles

Reported:
03/29/18 15:01

Dup
1803216-17 (Water)

Summit Scientific

Volatile Organic Compounds by EPA Method 8260B

Date Sampled: **03/16/18 00:00**

Analyte	Result	Reporting Limit	Units	Dilution	Batch	Prepared	Analyzed	Method	Notes
Benzene	2700	100	ug/l	100	1803232	03/22/18	03/22/18	EPA 8260B	
Toluene	2200	100	"	"	"	"	"	"	
Ethylbenzene	570	100	"	"	"	"	"	"	
Xylenes (total)	4200	200	"	"	"	"	"	"	

Date Sampled: **03/16/18 00:00**

Analyte	Result	Reporting Limit	Units	Dilution	Batch	Prepared	Analyzed	Method	Notes
<i>Surrogate: 1,2-Dichloroethane-d4</i>		87.5 %	37-154		"	"	"	"	
<i>Surrogate: Toluene-d8</i>		97.4 %	45-149		"	"	"	"	
<i>Surrogate: 4-Bromofluorobenzene</i>		98.7 %	45-146		"	"	"	"	

Summit Scientific

The results in this report apply to the samples analyzed in accordance with the chain of custody document. This analytical report must be reproduced in its entirety.



Talon/LPE
1811 E Mulberry
Ft Collins CO, 80524

Project: Nelson C1
Project Number: 701530.020.11
Project Manager: Jennifer Galles

Reported:
03/29/18 15:01

Volatile Organic Compounds by EPA Method 8260B - Quality Control

Summit Scientific

Analyte	Reporting			Spike	Source		%REC		RPD	
	Result	Limit	Units	Level	Result	%REC	Limits	RPD	Limit	Notes

Batch 1803232 - EPA 5030 Water MS

Blank (1803232-BLK1)

Prepared & Analyzed: 03/20/18

Benzene	ND	1.0	ug/l							
Toluene	ND	1.0	"							
Ethylbenzene	ND	1.0	"							
Xylenes (total)	ND	2.0	"							
Surrogate: 1,2-Dichloroethane-d4	10.9		"	13.3		81.5	37-154			
Surrogate: Toluene-d8	11.4		"	13.3		85.4	45-149			
Surrogate: 4-Bromofluorobenzene	13.1		"	13.3		98.5	45-146			

LCS (1803232-BS1)

Prepared & Analyzed: 03/20/18

Benzene	30.0	1.0	ug/l	33.3		90.0	51-132			
Toluene	32.4	1.0	"	33.3		97.4	51-138			
Ethylbenzene	33.9	1.0	"	33.1		102	58-146			
m,p-Xylene	66.8	2.0	"	66.5		100	57-144			
o-Xylene	32.7	1.0	"	32.7		100	53-146			
Surrogate: 1,2-Dichloroethane-d4	12.2		"	13.3		91.3	37-154			
Surrogate: Toluene-d8	13.9		"	13.3		104	45-149			
Surrogate: 4-Bromofluorobenzene	12.9		"	13.3		97.1	45-146			

Matrix Spike (1803232-MS1)

Source: 1803216-01

Prepared & Analyzed: 03/20/18

Benzene	30.7	1.0	ug/l	33.3	11400	NR	34-141			
Toluene	32.7	1.0	"	33.3	10600	NR	27-151			
Ethylbenzene	36.9	1.0	"	33.1	907	NR	29-160			
m,p-Xylene	72.4	2.0	"	66.5	4240	NR	20-166			
o-Xylene	35.4	1.0	"	32.7	1790	NR	33-159			
Surrogate: 1,2-Dichloroethane-d4	12.3		"	13.3		92.1	37-154			
Surrogate: Toluene-d8	13.2		"	13.3		98.9	45-149			
Surrogate: 4-Bromofluorobenzene	12.8		"	13.3		96.2	45-146			

Summit Scientific

The results in this report apply to the samples analyzed in accordance with the chain of custody document. This analytical report must be reproduced in its entirety.



Talon/LPE
1811 E Mulberry
Ft Collins CO, 80524

Project: Nelson C1
Project Number: 701530.020.11
Project Manager: Jennifer Galles

Reported:
03/29/18 15:01

Volatile Organic Compounds by EPA Method 8260B - Quality Control
Summit Scientific

Analyte	Reporting			Spike	Source		%REC		RPD	
	Result	Limit	Units	Level	Result	%REC	Limits	RPD	Limit	Notes

Batch 1803232 - EPA 5030 Water MS

Matrix Spike Dup (1803232-MSD1)	Source: 1803216-01			Prepared & Analyzed: 03/20/18						
Benzene	32.1	1.0	ug/l	33.3	11400	NR	34-141	4.49	32	
Toluene	35.2	1.0	"	33.3	10600	NR	27-151	7.25	25	
Ethylbenzene	39.2	1.0	"	33.1	907	NR	29-160	6.17	50	
m,p-Xylene	77.6	2.0	"	66.5	4240	NR	20-166	6.84	36	
o-Xylene	38.2	1.0	"	32.7	1790	NR	33-159	7.51	26	
Surrogate: 1,2-Dichloroethane-d4	12.4		"	13.3		93.2	37-154			
Surrogate: Toluene-d8	13.1		"	13.3		98.6	45-149			
Surrogate: 4-Bromofluorobenzene	13.0		"	13.3		97.4	45-146			

Summit Scientific

The results in this report apply to the samples analyzed in accordance with the chain of custody document. This analytical report must be reproduced in its entirety.



Talon/LPE
1811 E Mulberry
Ft Collins CO, 80524

Project: Nelson C1
Project Number: 701530.020.11
Project Manager: Jennifer Galles

Reported:
03/29/18 15:01

Notes and Definitions

DET	Analyte DETECTED
ND	Analyte NOT DETECTED at or above the reporting limit
NR	Not Reported
dry	Sample results reported on a dry weight basis
RPD	Relative Percent Difference