

7-Aug-2014
IGRF Model [1900.0-2020.0] Dip: 66.77 deg Field: 52617.4 nT
Lat: N40 14 38.2488 Long: W104 58 42.6288 Elev: 4976.90 ft
Magnetic North is 8.62 deg East of TRUE North
To correct azimuth from Magnetic to TRUE add 8.62 deg

Great Western Operating Company, LLC

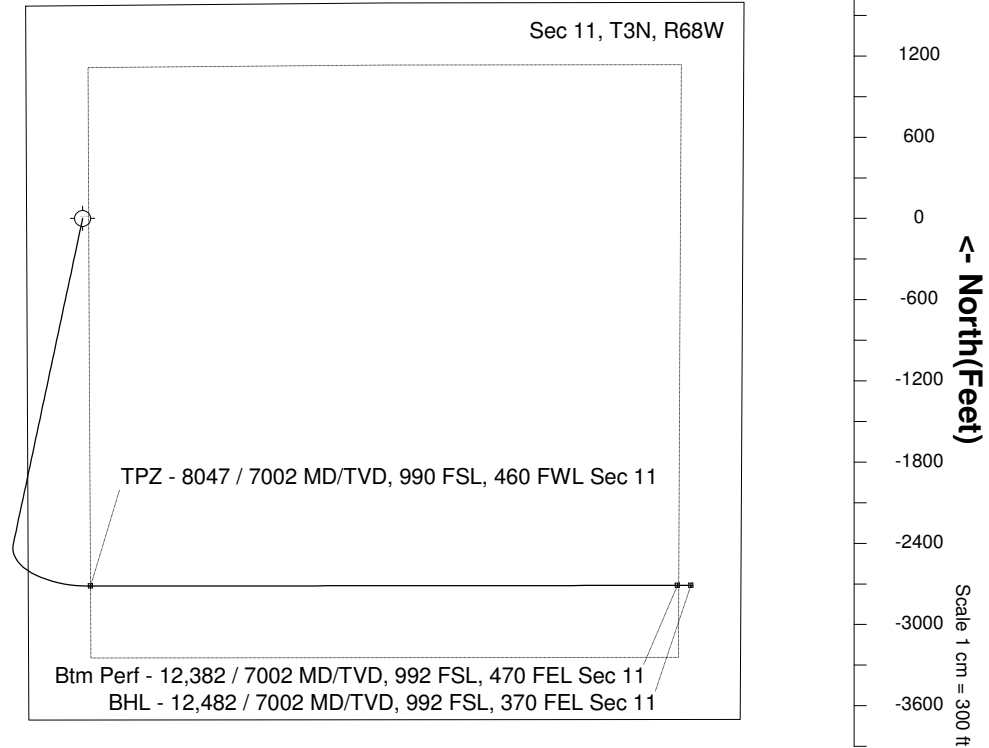
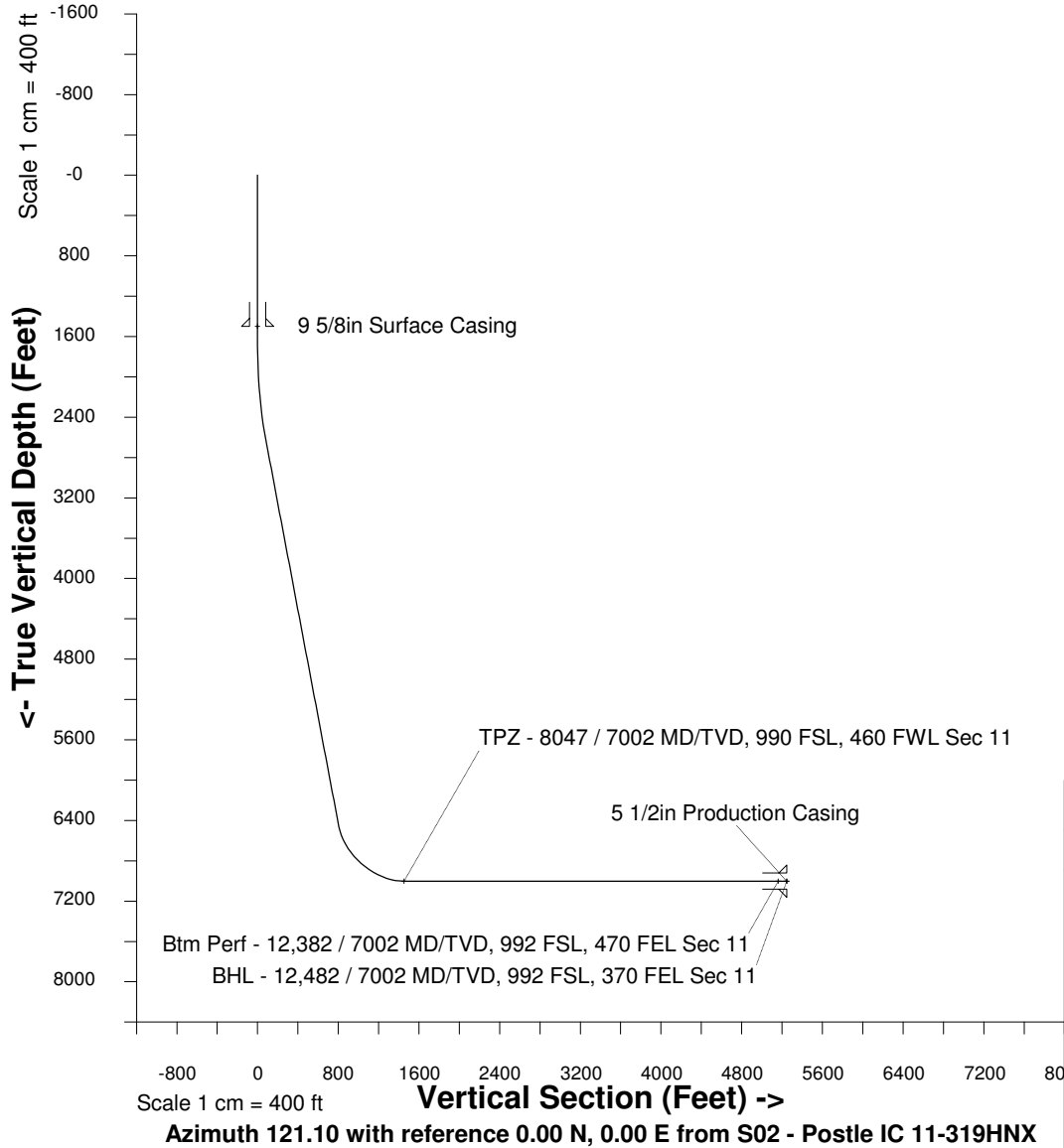
Location Colorado
Field Wattenburg
Installation Postle West
Slot S02 - Postle IC 11-319HNX
Well Postle IC 11-319HNX
Wellbore Postle IC 11-319HNX (PWB)

Created by admin
Date plotted 18-Dec-2017
Plot reference is Postle IC 11-319HNX (PWB).
Ref wellpath is Postle IC 11-319HNX (PWP#1).
Coordinates are in Feet reference S02 - Postle IC 11-319HNX.
True Vertical Depths are reference Rig Datum.
Measured Depths are reference Rig Datum.
Rig Datum: Planned Datum #1
Rig Datum to Mean Sea Level: 4996.90 ft.
Plot North is aligned to TRUE North.

Scale 1 cm = 300 ft

East (Feet) ->

-2400 -1800 -1200 -600 0 600 1200 1800 2400 3000 3600 4200 4800 5400



WELL PROFILE DATA

Point	MD	Inc	Azi	TVD	North	East	deg/100ft	V. Sect
Tie on	0.00	0.00	0.00	0.00	S 0.00	W 0.00		0.00
KOP	1679.00	0.00	192.02	1679.00	S 0.00	W 0.00	0.00	0.00
End of Build	2679.07	30.00	192.02	2633.99	S 250.29	W 53.31	9.84	83.65
End of Hold	7086.42	30.00	192.02	6450.79	S 2405.75	W 512.40	0.00	804.02
Target TPZ - ...Sec 11	8046.57	90.00	89.93	7002.00	S 2716.24	E 57.79	32.81	1452.63
Target Btm Pe...Sec 11	12381.92	90.00	89.93	7002.00	S 2710.75	E 4393.15	0.00	5161.90
End of Turn	12382.40	90.00	89.99	7002.00	S 2710.75	E 4393.63	42.65	5162.31
T.D. & Target BHL... 11	12481.87	90.00	89.99	7002.00	S 2710.73	E 4493.10	0.00	5247.47