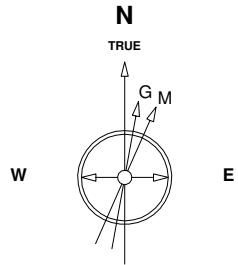


Great Western Operating Company, LLC

Location Colorado
Field Wattenburg
Installation Postle West
Slot S03 - Postle IC 11-282HC
Well Postle IC 11-282HC
Wellbore Postle IC 11-282HC (PWB)

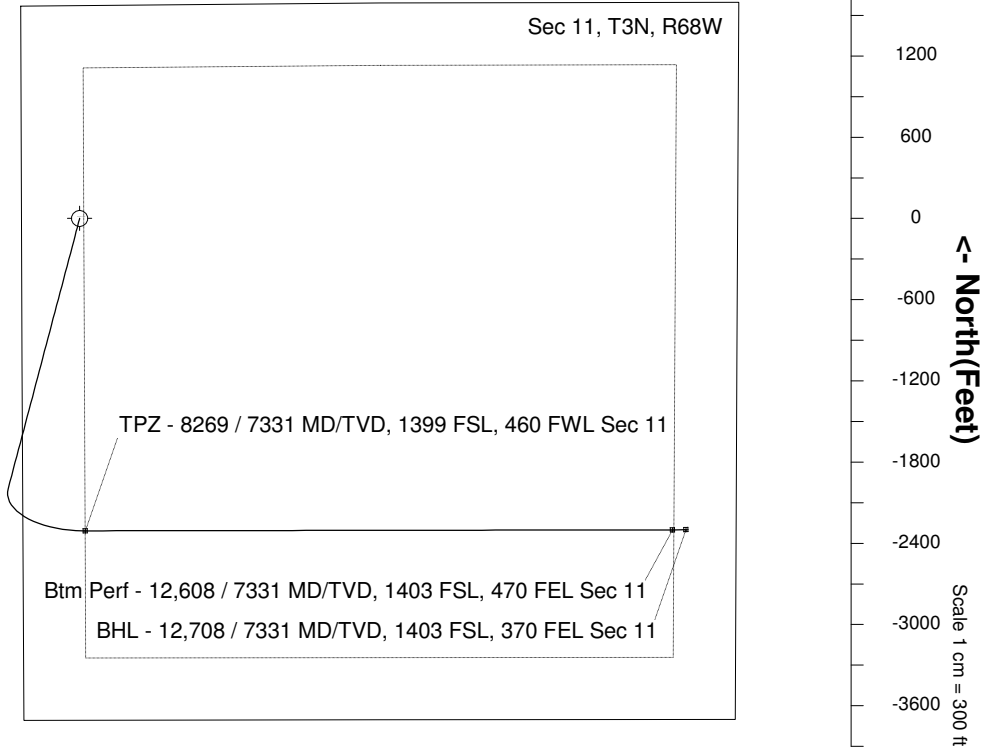
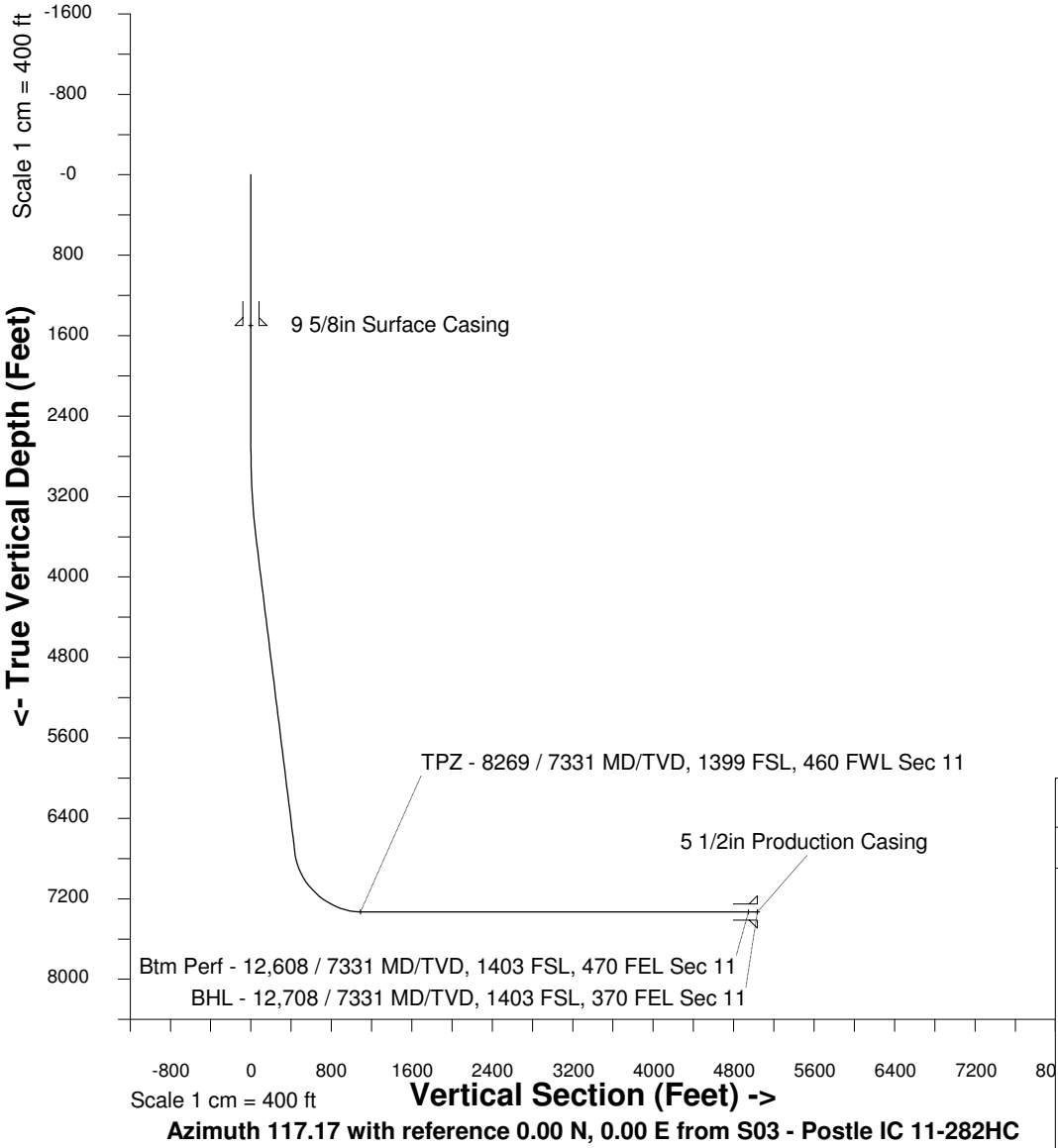
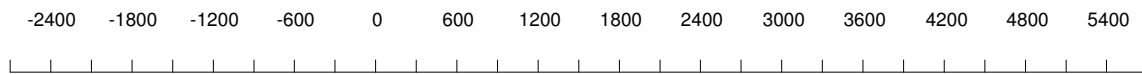
Created by admin
 Date plotted 18-Dec-2017
 Plot reference is Postle IC 11-282HC (PWB).
 Ref wellpath is Postle IC 11-282HC (PWP#1).
 Coordinates are in Feet reference S03 - Postle IC 11-282HC.
 True Vertical Depths are reference Rig Datum.
 Measured Depths are reference Rig Datum.
 Rig Datum: Planned Datum #1
 Rig Datum to Mean Sea Level: 4996.90 ft.
 Plot North is aligned to TRUE North.



7-Aug-2014
 IGRF Model [1900.0-2020.0] Dip: 66.77 deg Field: 52617.4 nT
 Lat: N40 14 38.2488 Long: W104 58 42.6288 Elev: 4976.90 ft
 Magnetic North is 8.62 deg East of TRUE North
 To correct azimuth from Magnetic to TRUE add 8.62 deg

Scale 1 cm = 300 ft

East (Feet) ->



WELL PROFILE DATA

Point	MD	Inc	Azi	TVD	North	East	deg/100ft	V. Sect
Tie on	0.00	0.00	0.00	0.00	S 0.00	W 0.00		0.00
KOP	2682.00	0.00	194.82	2682.00	S 0.00	W 0.00	0.00	0.00
End of Build	3681.89	30.00	194.82	3636.84	S 247.31	W 65.42	9.84	54.74
End of Hold	7295.31	30.00	194.82	6766.25	S 1993.77	W 527.40	0.00	441.28
Target TPZ - ...Sec 11	8269.23	90.00	89.90	7331.00	S 2307.85	E 41.32	32.81	1090.67
Target Btm Pe...Sec 11	12608.15	90.00	89.90	7331.00	S 2300.54	E 4380.23	0.00	4947.40
End of Turn	12612.43	90.00	89.35	7331.00	S 2300.52	E 4384.51	42.65	4951.19
T.D. & Target BHL... 11	12707.55	90.00	89.35	7331.00	S 2299.43	E 4479.62	0.00	5035.32