

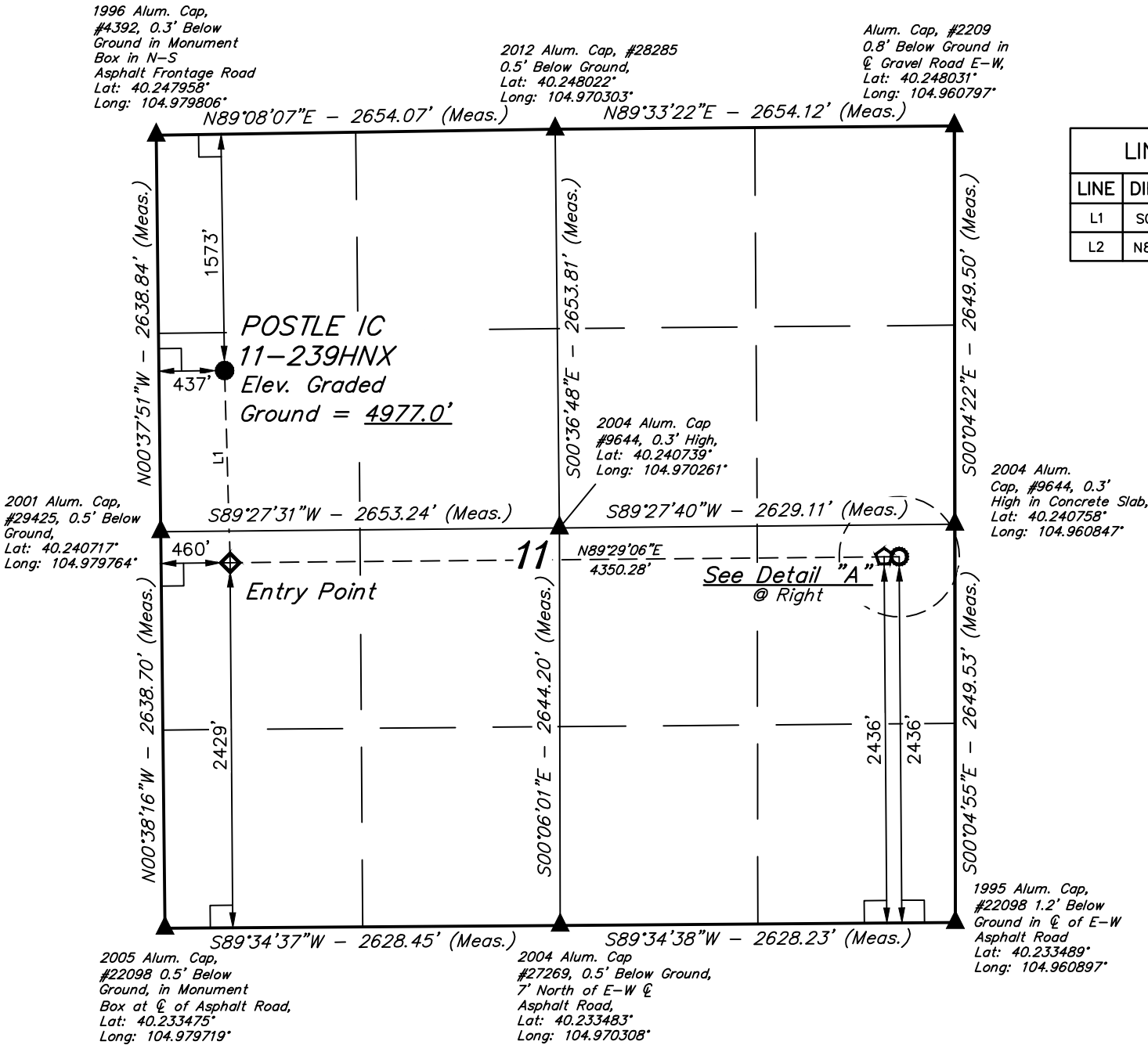
T3N, R68W, 6th P.M.

GREAT WESTERN OPERATING COMPANY

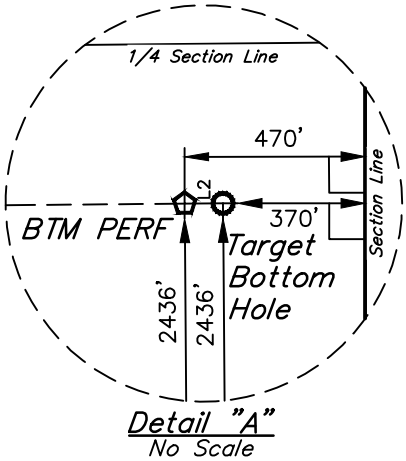
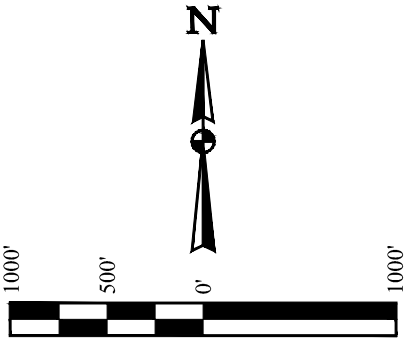
POSTLE IC 11-239HNX  
SW 1/4 NW 1/4, SECTION 11, T3N, R68W, 6th P.M.  
WELD COUNTY, COLORADO

BASIS OF BEARINGS  
BASIS OF ELEVATION

USGS COOPERATIVE BASE NETWORK CONTROL STATION,  
DESIGNATION 'VERMILYEA'. NGS DATA SHEET LISTS THE  
NAVD 88 ELEVATION AS BEING 5026 FEET



LINE TABLE		
LINE	DIRECTION	LENGTH
L1	S01°39'15"E	1279.26'
L2	N89°29'06"E	100.00'



CERTIFICATE

THIS IS TO CERTIFY THAT THE ABOVE MAP WAS PREPARED FROM FIELD  
NOTES OF ACTUAL SURVEYS MADE BY ME OR UNDER MY SUPERVISION  
AND THAT THE SAME ARE TRUE AND CORRECT TO THE BEST OF MY  
KNOWLEDGE AND BELIEF.

REGISTERED LAND SURVEYOR  
REGISTRATION NO. 28285  
STATE OF COLORADO  
06-14-17

REV: 2 06-14-17 K.B. (SL MOVE)

LEGEND:

- 90° SYMBOL
- PROPOSED WELLHEAD.
- TARGET BOTTOM HOLE.
- ENTRY POINT.
- BTM PERF.
- SECTION CORNERS LOCATED. (NAD 83)

PDOP = 1.4

NAD 83 (SURFACE LOCATION)	NAD 83 (ENTRY POINT)	NAD 83 (BTM PERF)	NAD 83 (TARGET BOTTOM HOLE)
LATITUDE = 40°14'37.15" (40.243653)	LATITUDE = 40°14'24.51" (40.240142)	LATITUDE = 40°14'24.62" (40.240172)	LATITUDE = 40°14'24.62" (40.240172)
LONGITUDE = 104°58'41.58" (104.978217)	LONGITUDE = 104°58'41.21" (104.978114)	LONGITUDE = 104°57'45.13" (104.962536)	LONGITUDE = 104°57'43.84" (104.962178)
NAD 27 (SURFACE LOCATION)	NAD 27 (ENTRY POINT)	NAD 27 (BTM PERF)	NAD 27 (TARGET BOTTOM HOLE)
LATITUDE = 40°14'37.21" (40.243669)	LATITUDE = 40°14'24.57" (40.240158)	LATITUDE = 40°14'24.68" (40.240189)	LATITUDE = 40°14'24.68" (40.240189)
LONGITUDE = 104°58'39.65" (104.977681)	LONGITUDE = 104°58'39.28" (104.977578)	LONGITUDE = 104°57'43.21" (104.962003)	LONGITUDE = 104°57'41.92" (104.961644)



UELS, LLC  
Corporate Office \* 85 South 200 East  
Vernal, UT 84078 \* (435) 789-1017

SURVEYED BY	CHAD MEIERS, D.N.	03-15-17	SCALE
DRAWN BY	D.COX	12-27-16	1" = 1000'

WELL LOCATION PLAT