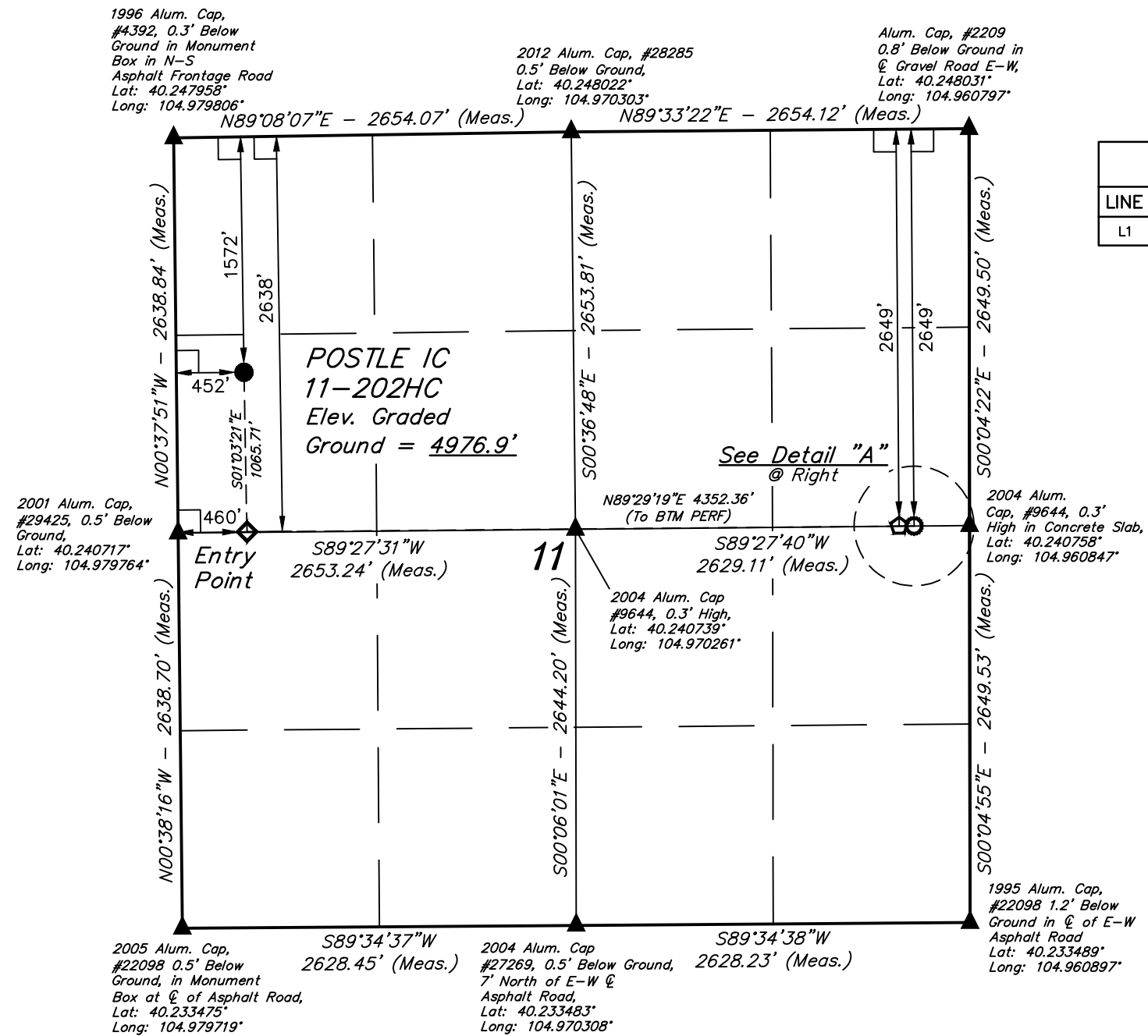


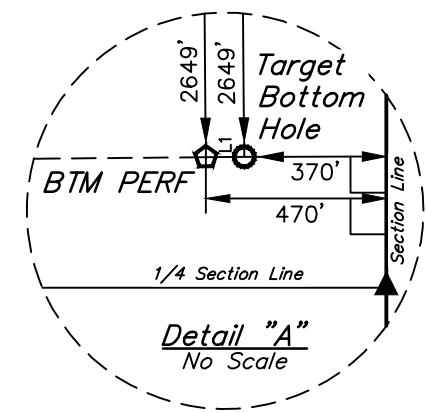
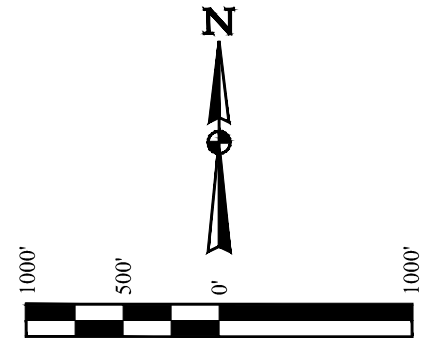
POSTLE IC 11-202HC  
SW 1/4 NW 1/4, SECTION 11, T3N, R68W, 6th P.M.  
WELD COUNTY, COLORADO

BASIS OF BEARINGS  
BASIS OF ELEVATION

USGS COOPERATIVE BASE NETWORK CONTROL STATION,  
DESIGNATION 'VERMILYEA'. NGS DATA SHEET LISTS THE  
NAVD 88 ELEVATION AS BEING 5026 FEET



LINE TABLE		
LINE	DIRECTION	LENGTH
L1	N89°29'19"E	100.00'



CERTIFICATE  
THIS IS TO CERTIFY THAT THE ABOVE DATA WAS PREPARED FROM FIELD NOTES OF ACTUAL SURVEYS MADE BY ME OR UNDER MY SUPERVISION AND THAT THE SAME ARE TRUE AND CORRECT TO THE BEST OF MY KNOWLEDGE AND BELIEF.



REV: 2 06-14-17 K.B. (SL MOVE)

- LEGEND:**
- ◻ = 90° SYMBOL
  - = PROPOSED WELLHEAD.
  - = TARGET BOTTOM HOLE.
  - ◇ = ENTRY POINT.
  - ⊗ = BTM PERF.
  - ▲ = SECTION CORNERS LOCATED. (NAD 83)

PDOP = 1.4

NAD 83 (SURFACE LOCATION)	NAD 83 (ENTRY POINT)	NAD 83 (BTM PERF)	NAD 83 (TARGET BOTTOM HOLE)
LATITUDE = 40°14'37.16" (40.243656)	LATITUDE = 40°14'26.63" (40.240731)	LATITUDE = 40°14'26.73" (40.240758)	LATITUDE = 40°14'26.73" (40.240758)
LONGITUDE = 104°58'41.38" (104.978161)	LONGITUDE = 104°58'41.22" (104.978117)	LONGITUDE = 104°57'45.11" (104.962531)	LONGITUDE = 104°57'43.82" (104.962172)
NAD 27 (SURFACE LOCATION)	NAD 27 (ENTRY POINT)	NAD 27 (BTM PERF)	NAD 27 (TARGET BOTTOM HOLE)
LATITUDE = 40°14'37.21" (40.243669)	LATITUDE = 40°14'26.69" (40.240747)	LATITUDE = 40°14'26.79" (40.240775)	LATITUDE = 40°14'26.79" (40.240775)
LONGITUDE = 104°58'39.46" (104.977628)	LONGITUDE = 104°58'39.30" (104.977583)	LONGITUDE = 104°57'43.19" (104.961997)	LONGITUDE = 104°57'41.90" (104.961639)

**UINTEAH**  
ENGINEERING & LAND SURVEYING

**UELS, LLC**  
Corporate Office \* 85 South 200 East  
Vernal, UT 84078 \* (435) 789-1017

<b>SURVEYED BY</b>	CHAD MEIERS, D.N.	03-15-17	<b>SCALE</b>
<b>DRAWN BY</b>	D.COX	12-27-16	1" = 1000'

**WELL LOCATION PLAT**