

T3N, R68W, 6th P.M.

GREAT WESTERN OPERATING COMPANY

POSTLE IC 11-122HNX
SW 1/4 NW 1/4, SECTION 11, T3N, R68W, 6th P.M.
WELD COUNTY, COLORADO

BASIS OF BEARINGS
BASIS OF ELEVATION

USGS COOPERATIVE BASE NETWORK CONTROL STATION,
DESIGNATION 'VERMILYEA'. NGS DATA SHEET LISTS THE
NAVD 88 ELEVATION AS BEING 5026 FEET

1996 Alum. Cap,
#4392, 0.3' Below
Ground in Monument
Box in N-S
Asphalt Frontage Road
Lat: 40.247958°
Long: 104.979806°

2012 Alum. Cap, #28285
0.5' Below Ground,
Lat: 40.248022°
Long: 104.970303°

Alum. Cap, #2209
0.8' Below Ground in
Gravel Road E-W,
Lat: 40.248031°
Long: 104.960797°

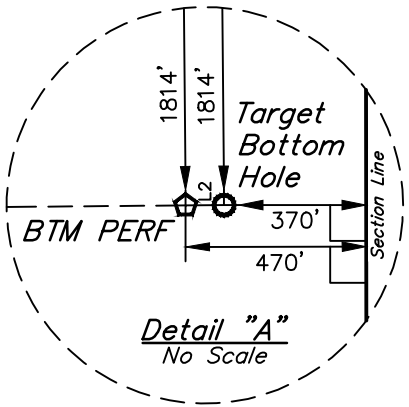
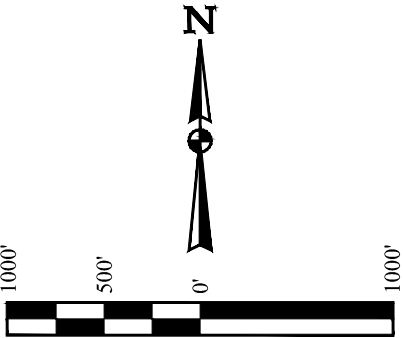
2004 Alum.
Cap, #9644, 0.3'
High in Concrete Slab,
Lat: 40.240758°
Long: 104.960847°

2005 Alum. Cap,
#22098 0.5' Below
Ground, in Monument
Box at E of Asphalt Road,
Lat: 40.233475°
Long: 104.979719°

2004 Alum. Cap
#27269, 0.5' Below Ground,
7' North of E-W of
Asphalt Road,
Lat: 40.233483°
Long: 104.970308°

1995 Alum. Cap,
#22098 1.2' Below
Ground in E-W of
Asphalt Road
Lat: 40.233489°
Long: 104.960897°

LINE TABLE		
LINE	DIRECTION	LENGTH
L1	S01°56'40"W	352.91'
L2	N89°24'36"E	100.00'



CERTIFICATE
THIS IS TO CERTIFY THAT THE ABOVE MAP WAS PREPARED FROM FIELD
NOTES OF ACTUAL SURVEYS MADE BY ME OR UNDER MY SUPERVISION
AND THAT THE SAME ARE TRUE AND CORRECT TO THE BEST OF MY
KNOWLEDGE AND BELIEF.
REGISTERED LAND SURVEYOR
REGISTRATION NO. 28285
STATE OF COLORADO
JUL 15-17

REV: 1 03-28-17 K.B. (BTM PERF ADD & TBH MOVE)

LEGEND:
= 90° SYMBOL
= PROPOSED WELLHEAD.
= TARGET BOTTOM HOLE.
= ENTRY POINT.
= BTM PERF.
= SECTION CORNERS LOCATED. (NAD 83)

PDOP = 1.4

NAD 83 (SURFACE LOCATION)	NAD 83 (ENTRY POINT)	NAD 83 (BTM PERF)	NAD 83 (TARGET BOTTOM HOLE)
LATITUDE = 40°14'38.30" (40.243972)	LATITUDE = 40°14'34.82" (40.243006)	LATITUDE = 40°14'34.98" (40.243050)	LATITUDE = 40°14'34.98" (40.243050)
LONGITUDE = 104°58'41.08" (104.978078)	LONGITUDE = 104°58'41.27" (104.978131)	LONGITUDE = 104°57'45.05" (104.962514)	LONGITUDE = 104°57'43.76" (104.962156)
NAD 27 (SURFACE LOCATION)	NAD 27 (ENTRY POINT)	NAD 27 (BTM PERF)	NAD 27 (TARGET BOTTOM HOLE)
LATITUDE = 40°14'38.36" (40.243989)	LATITUDE = 40°14'34.88" (40.243022)	LATITUDE = 40°14'35.04" (40.243067)	LATITUDE = 40°14'35.04" (40.243067)
LONGITUDE = 104°58'39.16" (104.977544)	LONGITUDE = 104°58'39.35" (104.977597)	LONGITUDE = 104°57'43.13" (104.961981)	LONGITUDE = 104°57'41.85" (104.961625)



UELS, LLC
Corporate Office * 85 South 200 East
Vernal, UT 84078 * (435) 789-1017

SURVEYED BY	CHAD MEIERS	12-20-16	SCALE
DRAWN BY	D.COX	12-27-16	1" = 1000'

WELL LOCATION PLAT