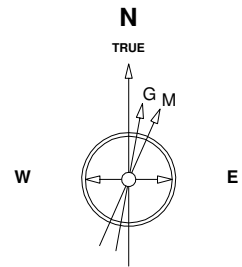


Great Western Operating Company, LLC

Created by admin
Date plotted 30-Jun-2017



7-Aug-2014
IGRF Model [1900.0-2020.0] Dip: 66.77 deg Field: 52617.4 nT
Lat: N40 14 38.2488 Long: W104 58 42.6288 Elev: 4976.90 ft
Magnetic North is 8.62 deg East of TRUE North
To correct azimuth from Magnetic to TRUE add 8.62 deg

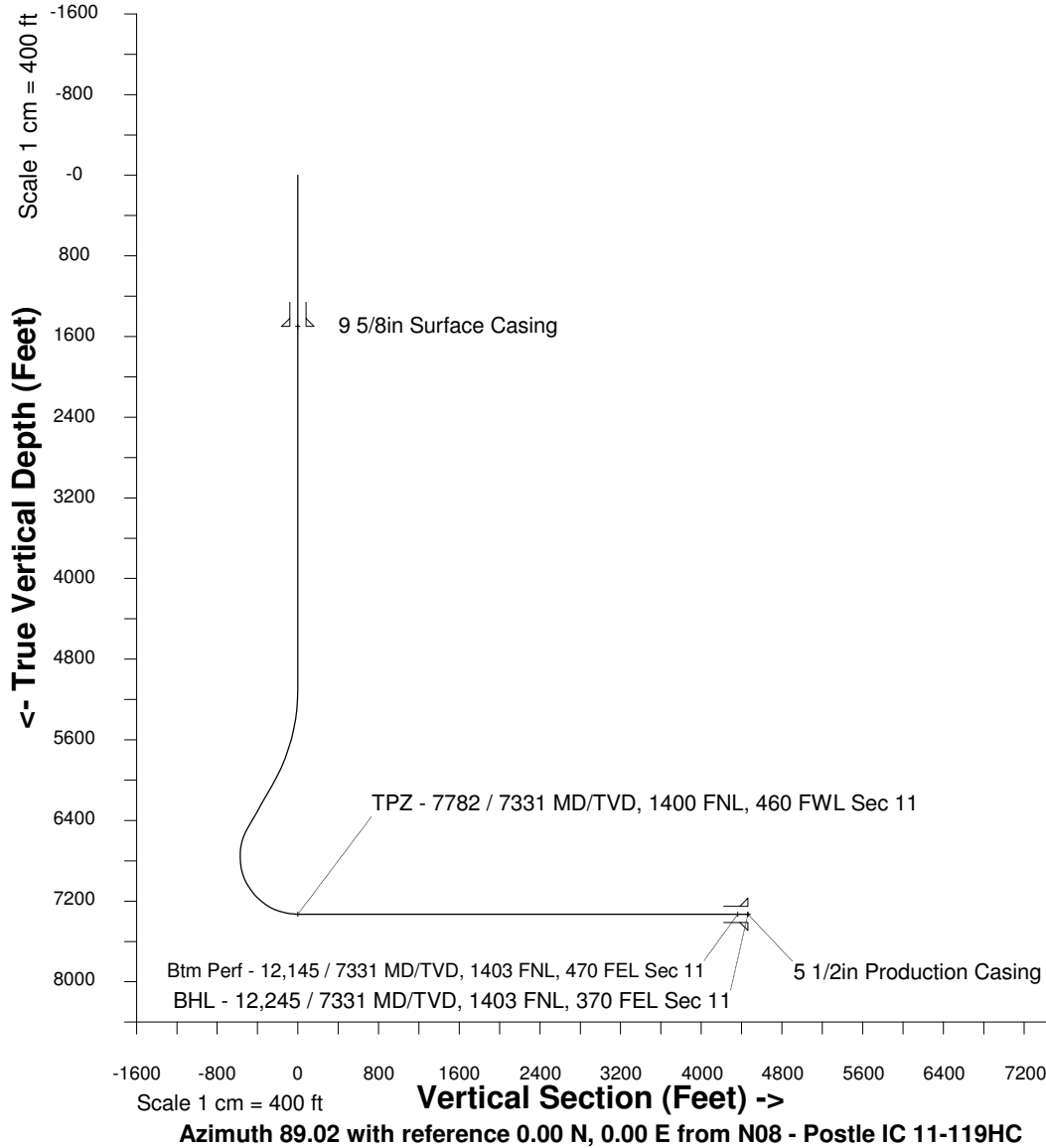
Location	Colorado	Slot	N08 - Postle IC 11-119HC
Field	Wattenburg	Well	Postle IC 11-119HC
Installation	Postle West	Wellbore	Postle IC 11-119HC (PWB)

Plot reference is Postle IC 11-119HC (PWB).
Ref wellpath is Postle IC 11-119HC (PWP#1).
Coordinates are in Feet reference N08 - Postle IC 11-119HC.
True Vertical Depths are reference Rig Datum.
Measured Depths are reference Rig Datum.
Rig Datum: Planned Datum #1
Rig Datum to Mean Sea Level: 4996.90 ft.
Plot North is aligned to TRUE North.

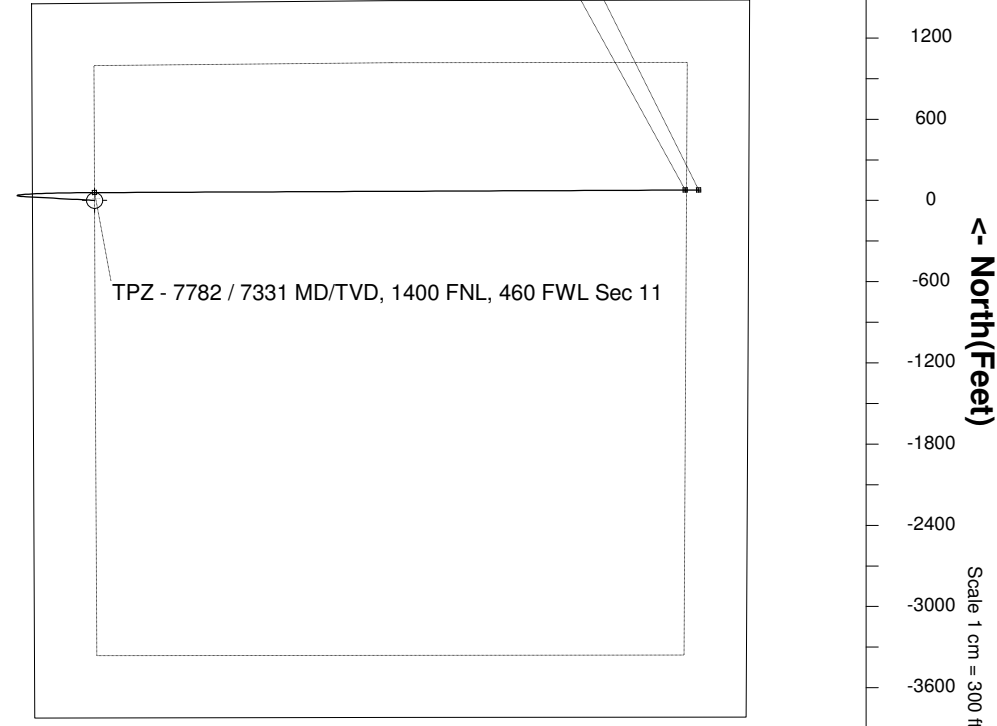
Scale 1 cm = 300 ft

East (Feet) ->

-2400 -1800 -1200 -600 0 600 1200 1800 2400 3000 3600 4200 4800 5400



BHL - 12,245 / 7331 MD/TVD, 1403 FNL, 370 FEL Sec 11
Btm Perf - 12,145 / 7331 MD/TVD, 1403 FNL, 470 FEL Sec 11



WELL PROFILE DATA

Point	MD	Inc	Azi	TVD	North	East	deg/100ft	V. Sect
Tie on	0.00	0.00	0.00	0.00	S 0.00	W 0.00		0.00
KOP	5098.40	0.00	273.10	5098.40	S 0.00	W 0.00	0.00	0.00
End of Build	6098.44	30.00	273.10	6053.37	N 13.83	W 255.52	9.84	-255.25
End of Hold	6582.45	30.00	273.10	6472.53	N 26.91	W 497.18	0.00	-496.65
Target TPZ - ...Sec 11	7781.90	90.00	89.76	7331.00	N 57.92	W 0.84	32.81	0.16
Target Btm Pe...Sec 11	12145.26	90.00	89.76	7331.00	N 76.52	E 4362.48	0.00	4363.15
End of Turn	12147.08	90.00	89.99	7331.00	N 76.53	E 4364.30	42.65	4364.97
T.D. & Target BHL... 11	12244.64	90.00	89.99	7331.00	N 76.54	E 4461.86	0.00	4462.52