

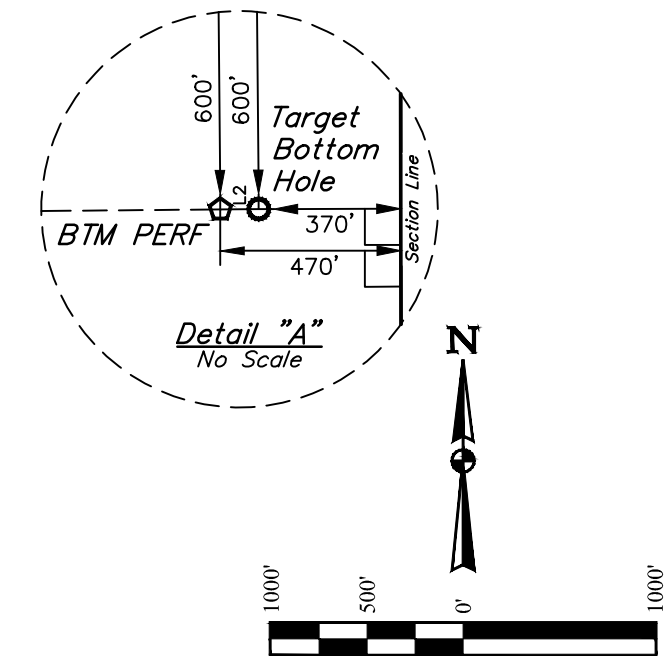
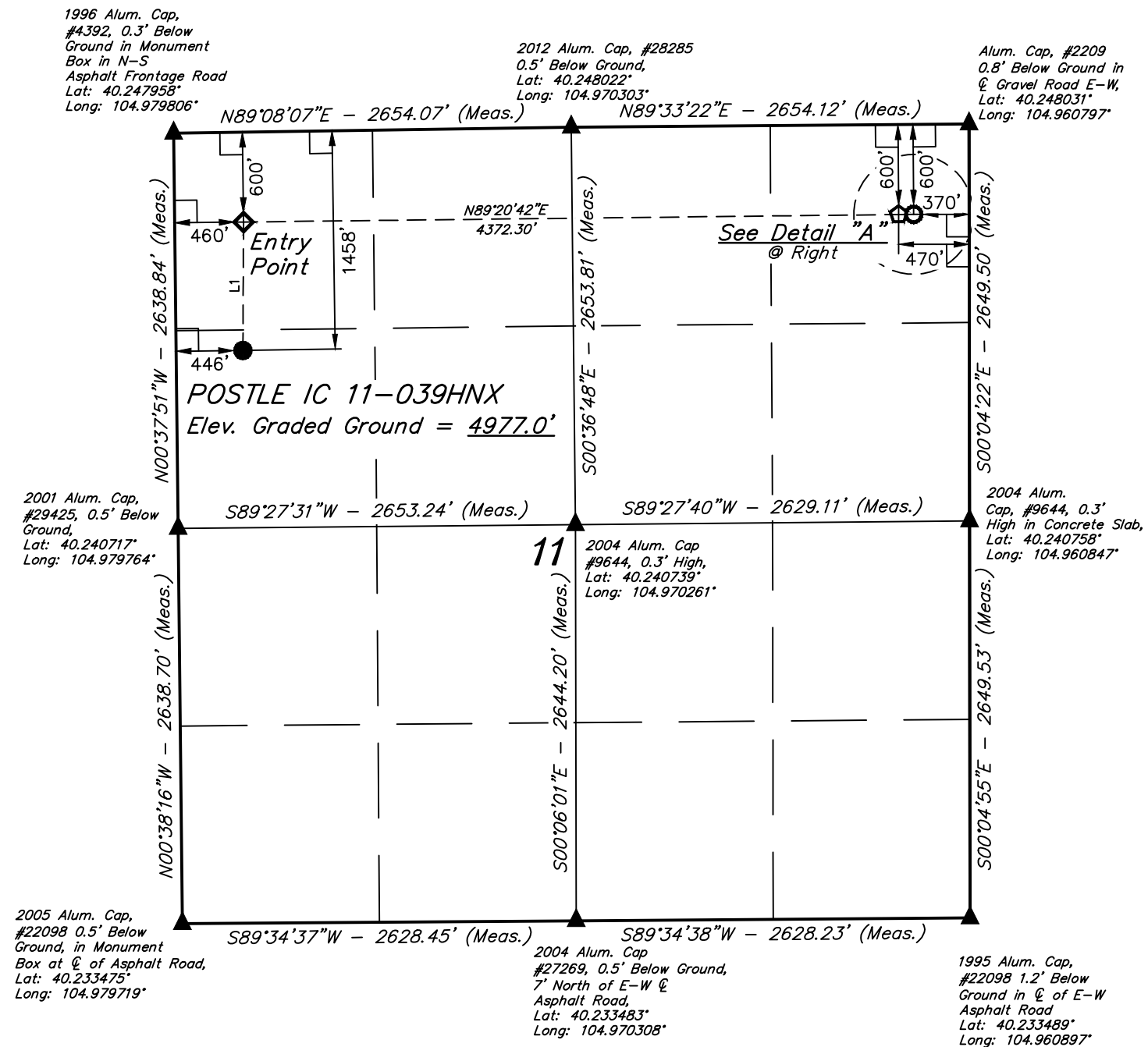
T3N, R68W, 6th P.M.

GREAT WESTERN OPERATING COMPANY

POSTLE IC 11-039HNX
SW 1/4 NW 1/4, SECTION 11, T3N, R68W, 6th P.M.
WELD COUNTY, COLORADO

BASIS OF BEARINGS
BASIS OF BEARINGS IS A G.P.S. OBSERVATION
BASIS OF ELEVATION

USGS COOPERATIVE BASE NETWORK CONTROL STATION,
DESIGNATION 'VERMILYEA'. NGS DATA SHEET LISTS THE
NAVD 88 ELEVATION AS BEING 5026 FEET



CERTIFICATE

THIS IS TO CERTIFY THAT THE ABOVE PLAT WAS PREPARED FROM FIELD NOTES OF ACTUAL SURVEYS MADE BY ME OR UNDER MY SUPERVISION AND THAT THE SAME ARE TRUE AND CORRECT TO THE BEST OF MY KNOWLEDGE AND BELIEF.

REGISTERED LAND SURVEYOR
REGISTRATION NO. 28285
STATE OF COLORADO
EXPIRES 12-17

REV: 1 03-28-17 K.B. (BTM PERF ADD & TBH MOVE)

- LEGEND:**
- └─┘ = 90° SYMBOL
 - = PROPOSED WELLHEAD.
 - = TARGET BOTTOM HOLE.
 - ◇ = ENTRY POINT.
 - ◻ = BTM PERF.
 - ▲ = SECTION CORNERS LOCATED. (NAD 83)

PDOP = 1.3

NAD 83 (SURFACE LOCATION)	NAD 83 (ENTRY POINT)	NAD 83 (BTM PERF)	NAD 83 (TARGET BOTTOM HOLE)
LATITUDE = 40°14'38.29" (40.243969)	LATITUDE = 40°14'46.76" (40.246322)	LATITUDE = 40°14'46.97" (40.246381)	LATITUDE = 40°14'46.98" (40.246383)
LONGITUDE = 104°58'41.47" (104.978186)	LONGITUDE = 104°58'41.34" (104.978150)	LONGITUDE = 104°57'44.97" (104.962492)	LONGITUDE = 104°57'43.68" (104.962133)
NAD 27 (SURFACE LOCATION)	NAD 27 (ENTRY POINT)	NAD 27 (BTM PERF)	NAD 27 (TARGET BOTTOM HOLE)
LATITUDE = 40°14'38.35" (40.243986)	LATITUDE = 40°14'46.82" (40.246339)	LATITUDE = 40°14'47.03" (40.246397)	LATITUDE = 40°14'47.04" (40.246400)
LONGITUDE = 104°58'39.55" (104.977653)	LONGITUDE = 104°58'39.42" (104.977617)	LONGITUDE = 104°57'43.05" (104.961958)	LONGITUDE = 104°57'41.76" (104.961600)

UINTEAH
ENGINEERING & LAND SURVEYING

UELS, LLC
Corporate Office * 85 South 200 East
Vernal, UT 84078 * (435) 789-1017

SURVEYED BY	CHAD MEIERS	12-20-16	SCALE
DRAWN BY	D.COX	12-27-16	1" = 1000'

WELL LOCATION PLAT