

HALLIBURTON

Cementing Job Summary

The Road to Excellence Starts with Safety

Sold To #: 300466	Ship To #: 3790833	Quote #: 0022392525	Sales Order #: 0904557466							
Customer: ANADARKO PETROLEUM CORP-EBUS		Customer Rep: .								
Well Name: NEWBY STATE	Well #: 30N-34HZ	API/UWI #: 05-123-44563-00								
Field: WATTENBERG	City (SAP): LONGMONT	County/Parish: WELD	State: COLORADO							
Legal Description: SE SE-33-3N-68W-588FSL-1275FEL										
Contractor: NABORS DRLG		Rig/Platform Name/Num: NABORS X22								
Job BOM: 7522 7522										
Well Type: HORIZONTAL GAS										
Sales Person: HALAMERICA\HX41066		Srvc Supervisor: Kyle Langston								
Job										
Formation Name										
Formation Depth (MD)	Top	Bottom								
Form Type		BHST								
Job depth MD	8110ft	Job Depth TVD								
Water Depth		Wk Ht Above Floor								
Perforation Depth (MD)	From	To								
Well Data										
Description	New / Used	Size in	ID in	Weight lbm/ft	Thread	Grade	Top MD ft	Bottom MD ft	Top TVD ft	Bottom TVD ft
Casing		9.625	8.921	36		J-55	0	810	0	810
Casing		7	6.276	26	LTC	J-55	0	6100	0	5721
Open Hole Section			8.5				810	6110	810	5731
Tools and Accessories										
Type	Size in	Qty	Make	Depth ft		Type	Size in	Qty	Make	
Guide Shoe	7					Top Plug	7	1		
Float Shoe	7	1		6109		Bottom Plug	7	1		
Float Collar	7	1		6062		SSR plug set	7		HES	
Insert Float	7					Plug Container	7		HES	
Stage Tool	7					Centralizers	7		HES	
Fluid Data										
Stage/Plug #: 1										
Fluid #	Stage Type	Fluid Name	Qty	Qty UoM	Mixing Density lbm/gal	Yield ft ³ /sack	Mix Fluid Gal	Rate bbl/min	Total Mix Fluid Gal	
1	Tuned Spacer III	Tuned Spacer III	40	bbl	10.5	6.25				
0.70 gal/bbl		MUSOL A, 330 GAL TOTE - (790828)								
88.91 lbm/bbl		BARITE, BULK (100003681)								
35.80 gal/bbl		FRESH WATER								
0.70 gal/bbl		DUAL SPACER SURFACTANT B, 5 GAL PAIL (100003665)								

HALLIBURTON

Cementing Job Summary

Fluid #	Stage Type	Fluid Name	Qty	Qty UoM	Mixing Density lbm/gal	Yield ft3/sack	Mix Fluid Gal	Rate bbl/min	Total Mix Fluid Gal
2	ElastiCem	ELASTICEM (TM) SYSTEM	400	sack	13.2	1.57		6	7.53
0.10 %		SUPER CBL, 50 LB PAIL (100003868)							
0.20 %		HR-5, 50 LB SK (100005050)							
7.53 Gal		FRESH WATER							
Fluid #	Stage Type	Fluid Name	Qty	Qty UoM	Mixing Density lbm/gal	Yield ft3/sack	Mix Fluid Gal	Rate bbl/min	Total Mix Fluid Gal
3	Displacement Fluid	Displacement Fluid	232	bbl	9.5				
Cement Left In Pipe		Amount	47 ft		Reason			Shoe Joint	
Mix Water:		pH 6	Mix Water Chloride:		0 ppm		Mix Water Temperature:		54 °F
Cement Temperature:			Plug Displaced by:		9.5 PPG		Disp. Temperature:		
Plug Bumped?		YES	Bump Pressure:		3100 PSI		Floats Held?		YES
Cement Returns:			Returns Density:				Returns Temperature:		
Comment									

2.0 Real-Time Job Summary

2.1 Job Event Log

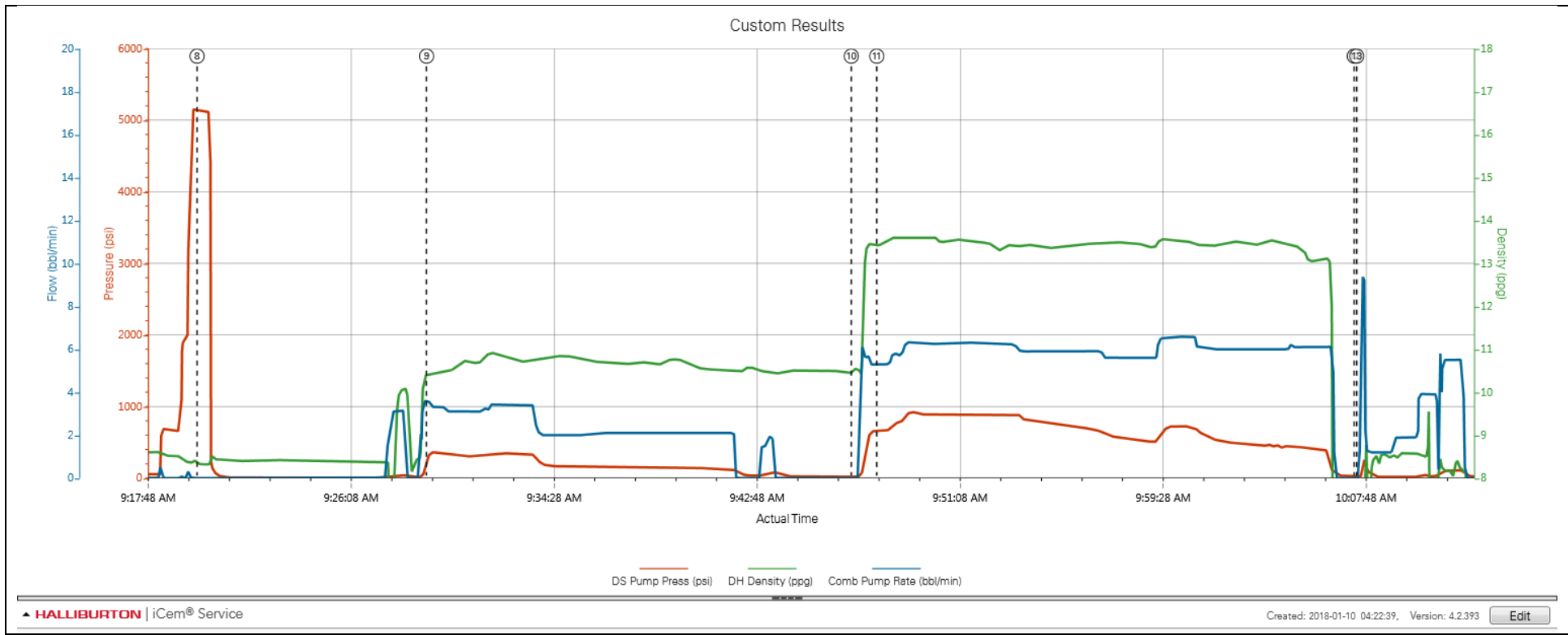
Type	Seq. No.	Activity	Graph Label	Date	Time	Source	Driv-Side Pump Pressure (psi)	Downhole Density (ppg)	Combined Pump Rate (bbl/min)	Comments
Event	1	Call Out	Call Out	1/9/2018	23:00:00	USER				CALLED OUT TO BE ON LOCATION @ 0500
Event	2	Pre-Convoy Safety Meeting	Pre-Convoy Safety Meeting	1/10/2018	02:00:00	USER				HELD SAFETY MEETING WITH HES PERSONNEL. DISCUSSED DESIGNATED ROUTE, POTENTIAL HAZARDS AND SWA
Event	3	Crew Leave Yard	Crew Leave Yard	1/10/2018	02:30:00	USER				HES DEPARTED YARD
Event	4	Arrive At Loc	Arrive At Loc	1/10/2018	03:30:00	USER				HES ARRIVED ON LOCATION. RIG RUNNING CASING
Event	5	Pre-Rig Up Safety Meeting	Pre-Rig Up Safety Meeting	1/10/2018	04:00:00	USER				HELD SAFETY MEETING WITH HES PERSONNEL. DISCUSSED JSA, SWA, PLAN TO RIG UP, AND INCIDENT REPORTING
Event	6	Rig-Up Equipment	Rig-Up Equipment	1/10/2018	04:30:00	USER				RIG UP CEMENT EQUIPMENT
Event	7	Pre-Job Safety Meeting	Pre-Job Safety Meeting	1/10/2018	08:30:00	USER	4.00	0.00	0.00	HELD SAFETY MEETING WITH ALL RIG SITE PERSONNEL. DISCUSSED JOB PROCEDURE, JSA, SWA, AND INCIDENT REPORTING.
Event	8	Test Lines	Test Lines	1/10/2018	09:19:55	COM5	5130.00	8.33	0.00	TEST KICKOUTS TO 500 PSI. TEST LINES TO 5000 PSI
Event	9	Pump Spacer 1	Pump Spacer 1	1/10/2018	09:29:20	COM5	331.00	10.41	3.50	PUMPED 4 BBLS OF TUNED SPACER III @ 10.5 PPG
Event	10	Drop Bottom Plug	Drop Bottom Plug	1/10/2018	09:46:46	COM5	19.00	10.54	0.00	DROP BOTTOM PLUG
Event	11	Pump Cement	Pump Cement	1/10/2018	09:47:49	COM5	662.00	13.42	5.30	PUMPED 112 BBLS OF CEMENT @ 13.2 PPG
Event	12	Drop Top Plug	Drop Top Plug	1/10/2018	10:07:25	COM5	20.00	0.35	0.00	DROP TOP PLUG
Event	13	Pump Displacement	Pump Displacement	1/10/2018	10:07:31	COM5	20.00	0.33	0.00	HES DISPLACE 10 BBLS FRESH WATER. RIG DISPLACED 222 BBLS OF OBM.
Event	14	Pre-Rig Down Safety Meeting	Pre-Rig Down Safety Meeting	1/10/2018	11:00:00	USER				HELD SAFETY MEETING WITH HES PERSONNEL. DISCUSSED JSA, SWA, PLAN TO RIG DOWN, AND INCIDENT REPORTING
Event	15	Rig-Down Equipment	Rig-Down Equipment	1/10/2018	11:30:00	USER				RIG DOWN CEMENT EQUIPMENT
Event	16	Pre-Convoy Safety Meeting	Pre-Convoy Safety Meeting	1/11/2018	12:30:00	USER				HELD SAFETY MEETING WITH HES PERSONNEL. DISCUSSED DESIGNATED ROUTE, POTENTIAL HAZARDS AND SWA

Event	17	Crew Leave Location	Crew Leave Location	1/11/2018	12:45:00	USER
-------	----	---------------------	---------------------	-----------	----------	------

HES DEPARTED LOCATION. THANK YOU FOR CHOOSING
HALLIBURTON ENERGY SERVICES. KYLE LANGSTON -
SERVICE SUPERVISOR I

3.0 Attachments

3.1 Custom Results – Job Chart with Events



3.2 Custom Results – Job Chart without Events

