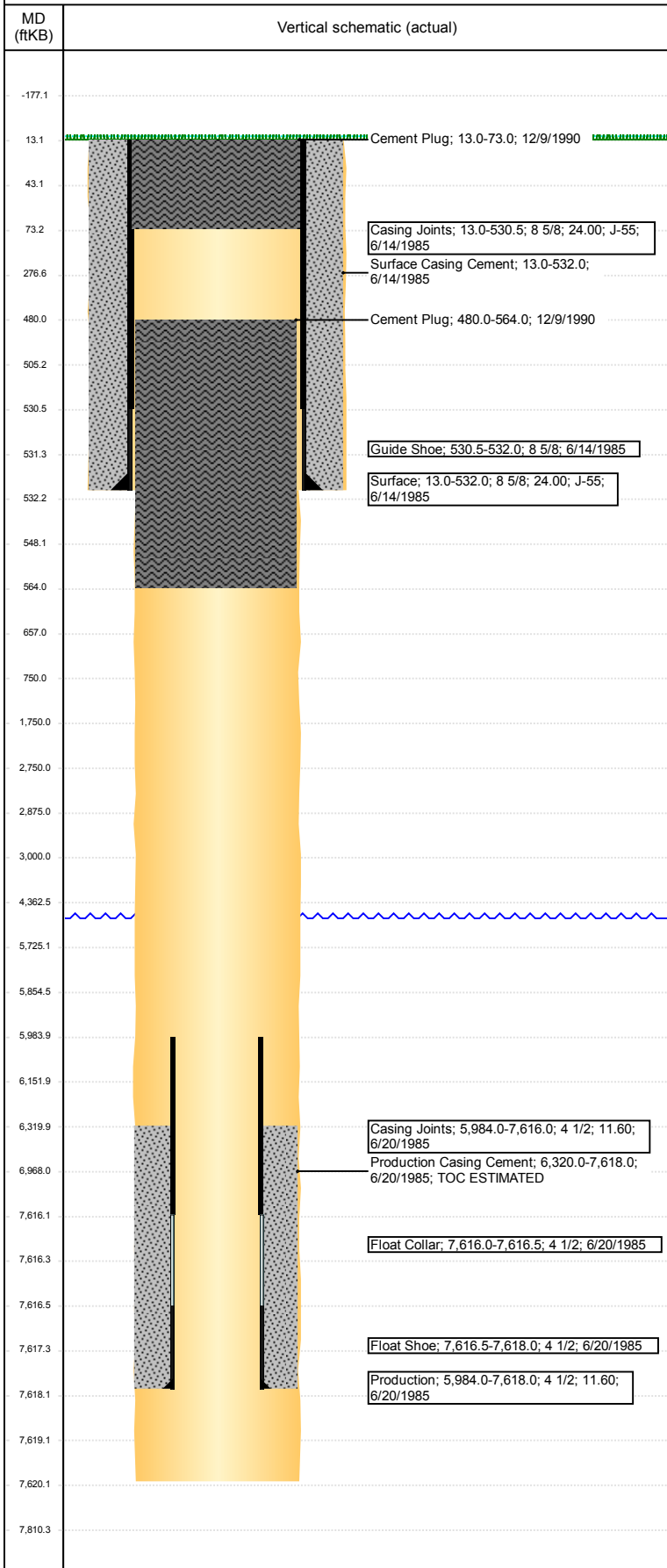


Wellbore Schematic Input Report

Well Name: WELD COUNTY-FA 11-12-7-64

ORIGINAL HOLE, 4/5/2018 4:19:31 PM



Well Header						
API 05-123-12486		Well Report Center		Well Configuration Type		
Original KB Elevation (ft) 4,857		KB - GL / MSL (ftKB) 13.00		Spud Date 6/14/1985		P & A Date 12/9/1990
Production Route D3			Well Production Status DA		SoRT Ignore Yes	
Directions To Well				Actual Latitude (°)		Actual Longitude (°)
Comment						
Congressional Location						
Quarter 3	Quarter 4	Section	Township	TwNShp N/S Dir	Range	Range E/W Dir
Rig Operator						
Rig Operator						
Plug Back Total Depths						
Date	Depth (ftKB)	Method		Com		
Wellbore Sections						
Section Des		Size (in)	Act Top, MD (ftKB)		Act Btm, MD (ftKB)	
SURFACE		12 1/4	13		532	
PRODUCTION		7 7/8	532		7,620	
Zone Statuses						
Zone Name		Status Date		Status		
Casing Strings						
Surface, 532.0ftKB						
Casing Description Surface	Run Date 6/14/1985	OD (in) 8 5/8	Wt/Len (l... 24.00	Grade J-55	Top, MD (ft... 13.0	MD (ftKB) 532.0
Production, 7,618.0ftKB						
Casing Description Production	Run Date 6/20/1985	OD (in) 4 1/2	Wt/Len (l... 11.60	Grade	Top, MD (ft... 13.0	MD (ftKB) 7,618.0
Cement						
Des		Start Date		Top (ftKB)		Btm (ftKB)
Surface Casing Cement		6/14/1985		13.0		532.0
Production Casing Cement		6/20/1985		6,320.0		7,618.0
Cement Plug		12/9/1990		480.0		564.0
Cement Plug		12/9/1990		13.0		73.0
Proposed Cement						
Des				Top (ftKB)		Btm (ftKB)
Cement Plug				13.0		750.0
Cement Plug				2,750.0		3,000.0
Cement Plug				5,725.0		5,984.0
Tubing Strings						
Tubing Description	Run Date	String...	ID (in)	Wt (lb/ft)	Grade	Len (ft) Set De...
Other In Hole						
Run Date		Des		OD (in)	Top (ftKB)	Btm (ftKB)
Proposed Other In Hole						
Des			OD (in)	Top (ftKB)		Btm (ftKB)
Logs						
Date		Type			Top, MD (ftKB)	Btm, MD (ftKB)
Job Supply Amounts						
Supply Item Des		Type	Uni...	Job Category	Total...	Total... Total...