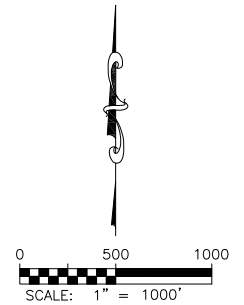
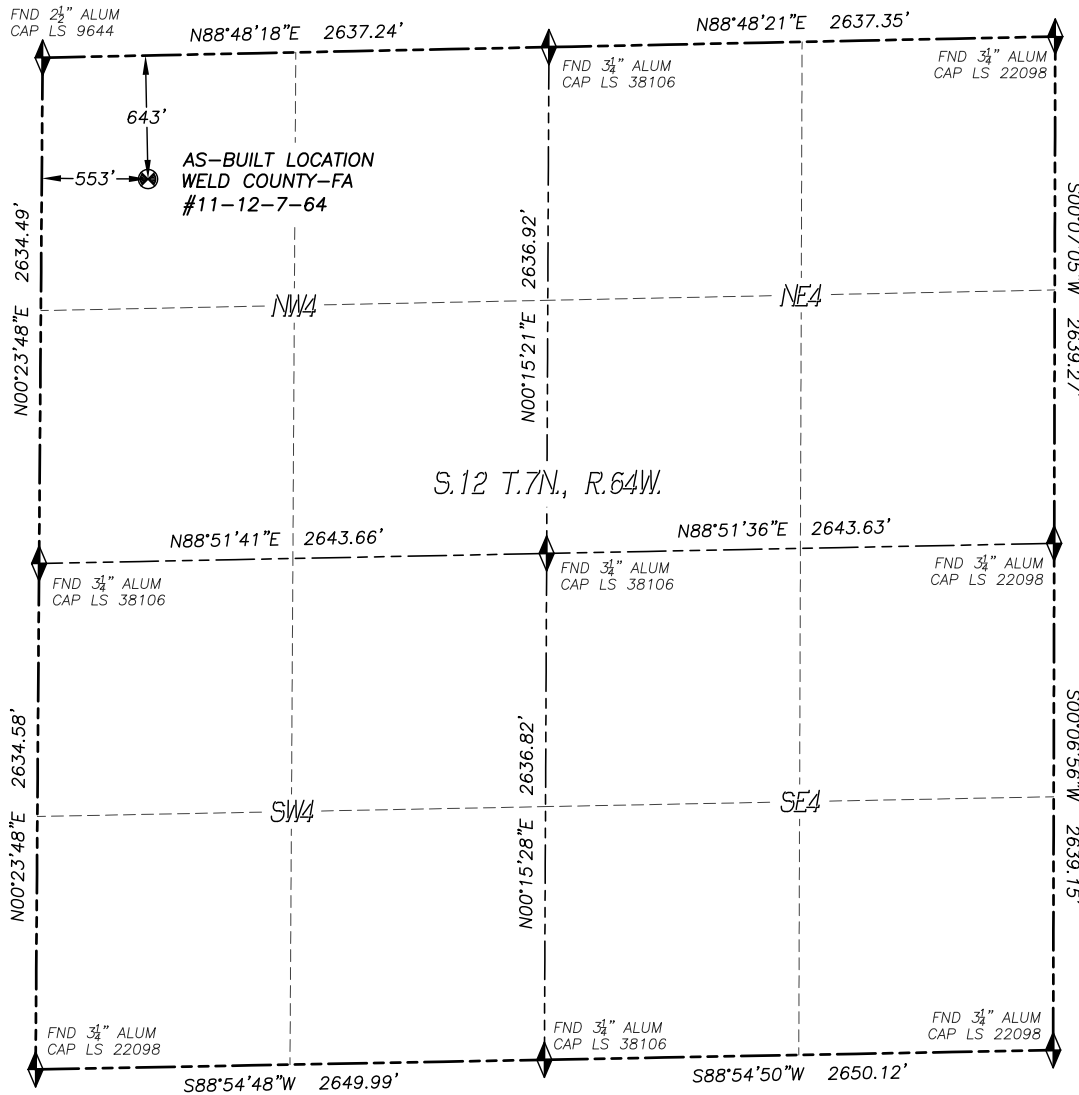


DALEY LAND SURVEYING, INC. 970.302.4159
WELL AS-BUILT SURVEY
WELD COUNTY FA #11-12-7-64

SECTION: 12
 TOWNSHIP: 7N
 RANGE: 64W



- LEGEND**
- ◆ FOUND MONUMENT AS DESCRIBED
 - ☀ PROPOSED WELL
 - ⊙ EXISTING WELL
 - BOTTOM HOLE
 - ⊖ ABANDONED WELL
 - ⬠ CALCULATED POSITION

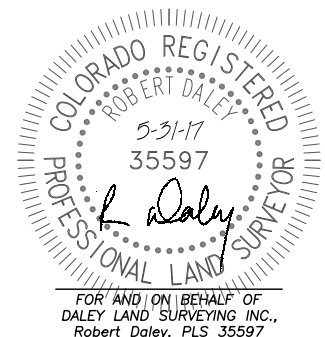
IN ACCORDANCE WITH A REQUEST FROM CODY BALL OF NOBLE ENERGY INC., DALEY LAND SURVEYING, INC. HAS DETERMINED THE SURFACE LOCATION OF THE WELD COUNTY FA #11-12-7-64 WELL TO BE 643' FNL, 553' FWL, AS MEASURED AT NINETY (90) DEGREES FROM THE SECTION LINES OF SECTION 12, TOWNSHIP 7 NORTH, RANGE 64 WEST, OF THE 6TH PRINCIPAL MERIDIAN, WELD COUNTY, COLORADO.

I HEREBY STATE THAT THIS WELL AS-BUILT SURVEY WAS PREPARED BY ME OR UNDER MY DIRECT SUPERVISION, THAT THE WORK WAS COMPLETED ON 5/22/2017 FOR AND ON BEHALF OF NOBLE ENERGY, INC., AND THAT THIS MAP DOES NOT REPRESENT A BOUNDARY SURVEY, IT IS NOT A LAND SURVEY PLAT OR AN IMPROVEMENT SURVEY PLAT AND IT IS NOT TO BE RELIED UPON FOR THE ESTABLISHMENT OF FENCE, BUILDING OR OTHER FUTURE IMPROVEMENT LINES.

NOTES:

- 1) BEARINGS FOR THIS MAP ARE ASSUMED AND BASED UPON GPS OBSERVATIONS MADE BETWEEN MONUMENTS LOCATED AT THE NORTHWEST CORNER AND WEST QUARTER CORNER OF SECTION 12, T.7N., R.64W.
- 2) HORIZONTAL DATUM IS NAD83.
- 3) VERTICAL DATUM IS NAVD88 AND ORIGINATES FROM THE LOCAL C.O.R.S. NETWORK, UTILIZING THE GEOID12A MODEL.
- 4) SURFACE USE: RANGE LAND.
- 5) INST. OPERATOR: KYLE DALEY.
- 6) NO EXCAVATION WAS DONE TO VERIFY LOCATION AS DETERMINED BY VISUAL INSPECTION AND METAL LOCATOR.

NAD 83 LATITUDE AND LONGITUDE	
SURFACE LOCATION:	
LATITUDE:	N40.59327°
LONGITUDE:	W104.50475°
ELEV:	4844'
PDOP:	1.8
QTR/QTR:	NW4/NW4



\\Survey\0810249\Drawings\Weld County FA #11-12-7-64.dwg