

LEGEND

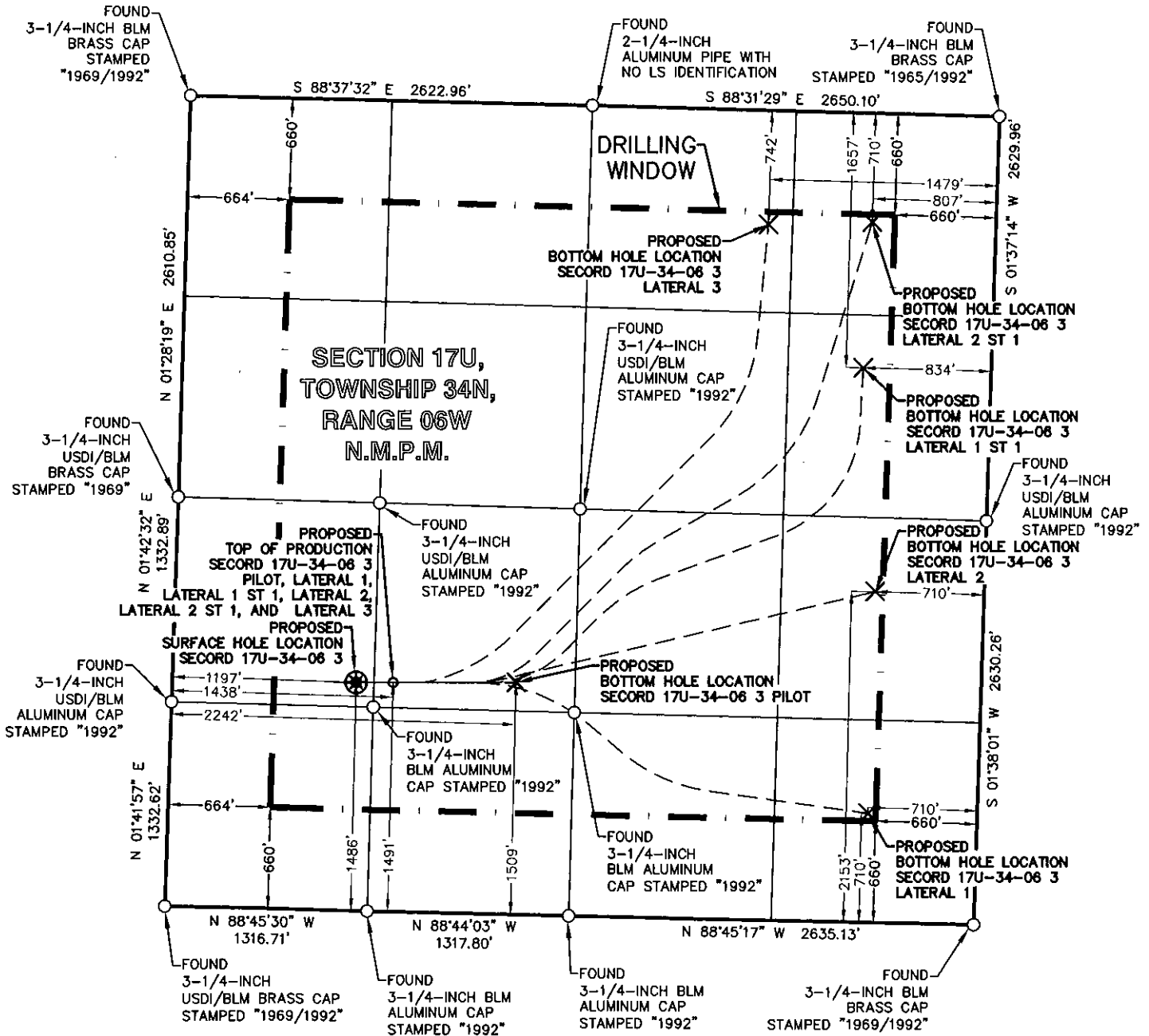
FOUND MONUMENT O

PROPOSED SURFACE HOLE LOCATION *

PROPOSED BOTTOM HOLE LOCATION X

0 500 1000 2000

GRAPHIC SCALE IN FEET



SURVEY NOTES

- SEE SHEET 2 OF 2 FOR COORDINATE TABLE, SURVEY NOTES, AND SURVEYOR'S CERTIFICATE.



BP AMERICA
PRODUCTION COMPANY
US LOWER 48 ONSHORE

WELL LOCATION PLAT

SECOND 17U-34-06 3

PART OF
SECTION 17U, TOWNSHIP 34N, RANGE 06W,
N.M.P.M.
LA PLATA COUNTY, COLORADO

DRAWN BY	CHECKED BY	SCALE	DATE	SHEET	REVISION
CFW/RLM	BMB	1"=1000'	03/09/2018	1 OF 2	

SECOND 17U-34-06 3 WELLBORE DISTANCES	
SHL TO TOP	533'
TOP TO BHL PILOT	804'
TOP TO BHL LATERAL 1	3,298'
TOP TO BHL LATERAL 1 ST 1	4,095'
TOP TO BHL LATERAL 2	3,205'
TOP TO BHL LATERAL 2 ST 1	4,697'
TOP TO BHL LATERAL 3	4,155'

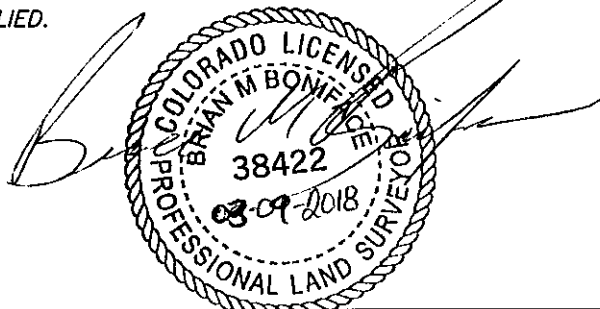
SECOND 17U-34-06 3	CSZ NAD'83	NAD'83	TIES	SEC / TWP / RNG	ELEVATION
PROPOSED SURFACE HOLE LOCATION (SHL)	N (Y) = 1,196,114.81' E (X) = 2,409,107.39'	LAT. = 37.18764304°N LON. = 107.52851715°W	FSL = 1486' FWL = 1197'	SEC 17U, TWP 34N, RNG 06W	EXISTING GROUND 7221.64'
PROPOSED TOP OF PRODUCTION (TOP) PILOT, LATERAL 1, LATERAL 1 ST 1, LATERAL 2, LATERAL 2 ST 1, AND LATERAL 3	N (Y) = 1,196,114.81' E (X) = 2,409,348.36'	LAT. = 37.18765740°N LON. = 107.52769016°W	FSL = 1491' FWL = 1438'	SEC 17U, TWP 34N, RNG 06W	PROPOSED GRADE 7220.96'
PROPOSED BOTTOM HOLE LOCATION (BHL) PILOT	N (Y) = 1,196,114.81' E (X) = 2,410,152.73'	LAT. = 37.18770532°N LON. = 107.52492965°W	FSL = 1509' FWL = 2242'	SEC 17U, TWP 34N, RNG 06W	
PROPOSED BOTTOM HOLE LOCATION (BHL) LATERAL 1	N (Y) = 1,195,265.86' E (X) = 2,412,445.06'	LAT. = 37.18551051°N LON. = 107.51699967°W	FSL = 710' FEL = 710'	SEC 17U, TWP 34N, RNG 06W	
PROPOSED BOTTOM HOLE LOCATION (BHL) LATERAL 1 ST 1	N (Y) = 1,198,163.40' E (X) = 2,412,403.30'	LAT. = 37.19346397°N LON. = 107.51735777°W	FNL = 1657' FEL = 834'	SEC 17U, TWP 34N, RNG 06W	
PROPOSED BOTTOM HOLE LOCATION (BHL) LATERAL 2	N (Y) = 1,196,708.02' E (X) = 2,412,486.02'	LAT. = 37.18947276°N LON. = 107.51696599°W	FSL = 2153' FEL = 710'	SEC 17U, TWP 34N, RNG 06W	
PROPOSED BOTTOM HOLE LOCATION (BHL) LATERAL 2 ST 1	N (Y) = 1,199,109.61' E (X) = 2,412,457.32'	LAT. = 37.19606523°N LON. = 107.51724251°W	FNL = 710' FEL = 807'	SEC 17U, TWP 34N, RNG 06W	
PROPOSED BOTTOM HOLE LOCATION (BHL) LATERAL 3	N (Y) = 1,199,095.20' E (X) = 2,411,784.18'	LAT. = 37.19598572°N LON. = 107.51955185°W	FNL = 742' FEL = 1479'	SEC 17U, TWP 34N, RNG 06W	


SURVEY NOTES

1. BEARING BASIS FOR THIS SURVEY IS BASED ON THE NORTH AMERICAN DATUM OF 1983, COLORADO STATE PLANE COORDINATE SYSTEM, COLORADO SOUTH, ZONE 0503.
2. ELEVATION BASIS FOR THIS SURVEY IS BASED ON THE NORTH AMERICAN VERTICAL DATUM OF 1988 (GEOID12A).
3. SURVEYED IN THE FIELD ON 11/02/2017.
4. BEARINGS AND DISTANCE SHOWN ARE MEASURED IN THE FIELD UNLESS OTHERWISE NOTED.
5. ALL MEASURED DISTANCES SHOWN ARE GRID USING A COMBINED SCALE FACTOR 0.99968170.
6. GPS INSTRUMENT OPERATOR: ROBERT HINOJOSA
7. GPS PDOP VALUE: 1.5

SURVEYOR'S CERTIFICATE

I, BRIAN M. BONIFACE, A PROFESSIONAL LAND SURVEYOR IN THE STATE OF COLORADO, DO HEREBY CERTIFY THAT THIS PLAT WAS PREPARED FROM AN ACTUAL SURVEY PERFORMED BY ME OR UNDER MY DIRECT RESPONSIBILITY, SUPERVISION AND CHECKING, AND IS TRUE AND CORRECT TO THE BEST OF MY KNOWLEDGE AND BELIEF BASED ON THE STANDARDS OF CARE OF PROFESSIONAL LAND SURVEYORS PRACTICING IN THE STATE OF COLORADO. THIS DOES NOT REPRESENT A LAND SURVEY PLAT, IMPROVEMENT SURVEY PLAT, OR MONUMENTED LAND SURVEY AS DEFINED BY COLORADO REVISED STATUTES 38-51-102 AND CANNOT BE RELIED UPON TO DETERMINE OWNERSHIP. THIS SURVEY IS NOT A GUARANTY OR WARRANTY, EITHER EXPRESSED OR IMPLIED.



	BP AMERICA PRODUCTION COMPANY US LOWER 48 ONSHORE
	WELL LOCATION PLAT
SECOND 17U-34-06 3 PART OF SECTION 17U, TOWNSHIP 34N, RANGE 06W, N.M.P.M. LA PLATA COUNTY, COLORADO	

DRAWN BY CFW/RLM	CHECKED BY BMB	SCALE N/A	DATE 03/09/2018	SHEET 2 OF 2	REVISION
---------------------	-------------------	--------------	--------------------	-----------------	----------