

FINISHED GRADE ELEVATION = 6064.8'

- NOTES:**
- Round corners at 35' radius or as needed.
  - Construct diversion ditches as needed.
  - Contours shown at 2' intervals.
  - Cut/Fill slopes 3:1 (Typ.).



**UELS, LLC**  
Corporate Office \* 85 South 200 East  
Vernal, UT 84078 \* (435) 789-1017

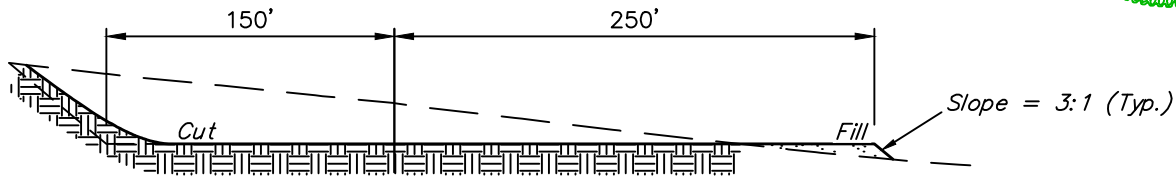
**RENEGADE OIL AND GAS, LLC**

**STATE OF COLORADO #3-33**  
**600' FNL 720' FWL**  
**NW 1/4 NW 1/4, SECTION 33, T5S, R64W, 6th P.M.**  
**ARAPAHOE COUNTY, COLORADO**

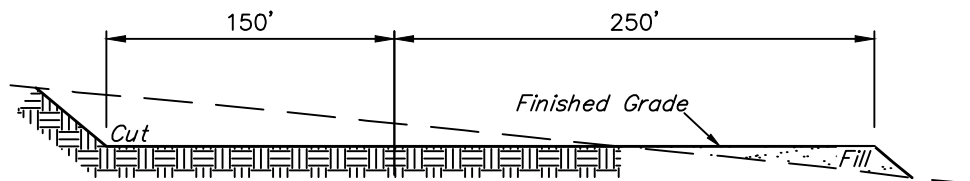
SURVEYED BY	CHAD MEIERS, G.B.	10-12-17	SCALE
DRAWN BY	K.B.	10-20-17	1" = 80'

**CONSTRUCTION LAYOUT** **FIGURE #1**

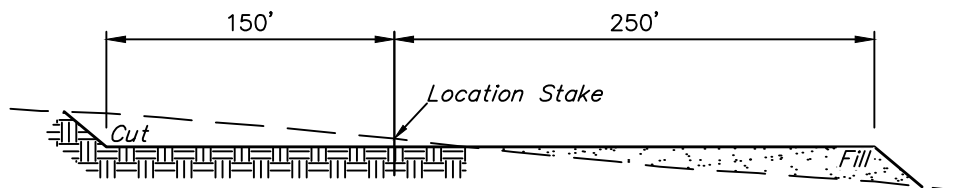
1" = 40'  
X-Section  
Scale  
1" = 100'



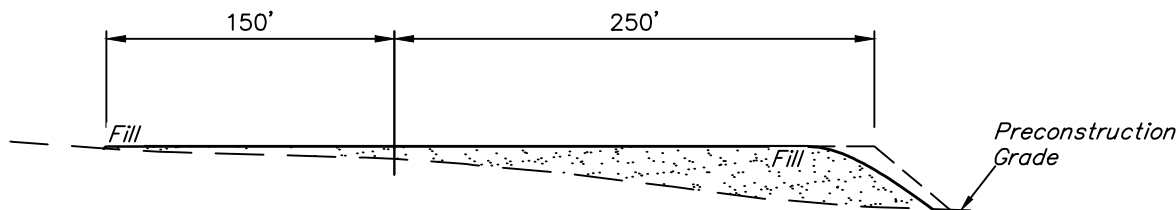
STA. 2+50



STA. 1+75



STA. 1+00



STA. 0+00

APPROXIMATE EARTHWORK QUANTITIES	
(6") TOPSOIL STRIPPING	2,420 Cu. Yds.
REMAINING LOCATION	11,000 Cu. Yds.
TOTAL CUT	13,420 Cu. Yds.
FILL	11,000 Cu. Yds.
EXCESS MATERIAL	2,420 Cu. Yds.
TOPSOIL	2,420 Cu. Yds.
EXCESS UNBALANCE (After Interim Rehabilitation)	0 Cu. Yds.

APPROXIMATE SURFACE DISTURBANCE AREAS		
	DISTANCE	ACRES
WELL SITE AREA OF MAX. DISTURBANCE	NA	±5.647
50' WIDE ACCESS ROAD R-O-W DISTURBANCE	±733'	±0.841
TOTAL SURFACE USE AREA		±6.488

- NOTES:**
- Fill quantity includes 5% for compaction.
  - Calculations based on 6" of topsoil stripping.
  - Cut/Fill slopes 3:1 (Typ.).

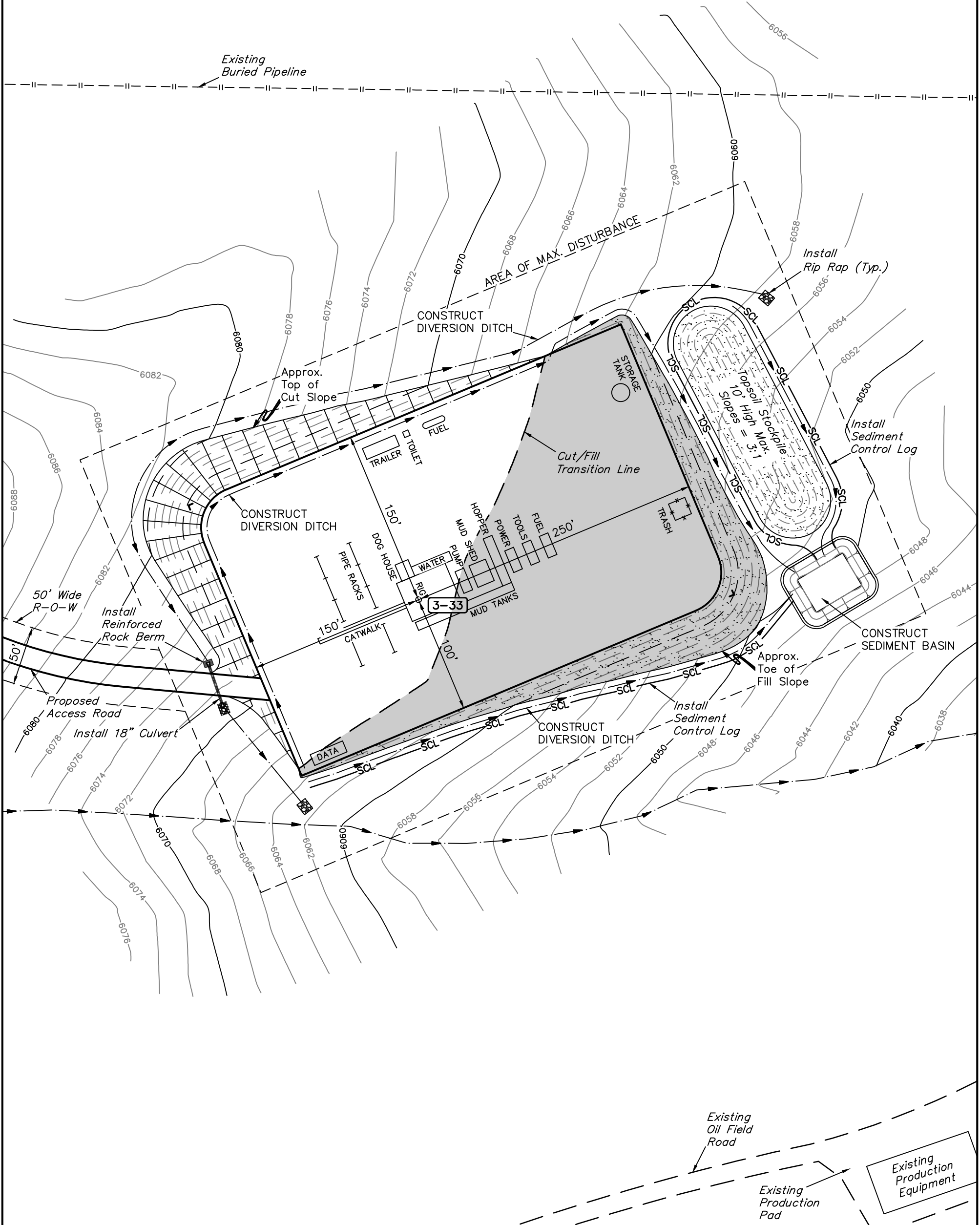
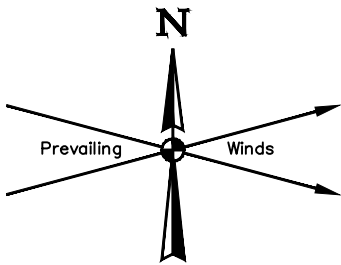
**RENEGADE OIL AND GAS, LLC**

STATE OF COLORADO #3-33  
600' FNL 720' FWL  
NW 1/4 NW 1/4, SECTION 33, T5S, R64W, 6th P.M.  
ARAPAHOE COUNTY, COLORADO

SURVEYED BY	CHAD MEIERS, G.B.	10-12-17	SCALE
DRAWN BY	K.B.	10-20-17	AS SHOWN
CONSTRUCTION LAYOUT CROSS SECTIONS			FIGURE #2



UELS, LLC  
Corporate Office \* 85 South 200 East  
Vernal, UT 84078 \* (435) 789-1017



**NOTES:**  
• Contours shown at 2' intervals.

**RENEGADE OIL AND GAS, LLC**

**STATE OF COLORADO #3-33**  
**600' FNL 720' FWL**  
**NW 1/4 NW 1/4, SECTION 33, T5S, R64W, 6th P.M.**  
**ARAPAHOE COUNTY, COLORADO**

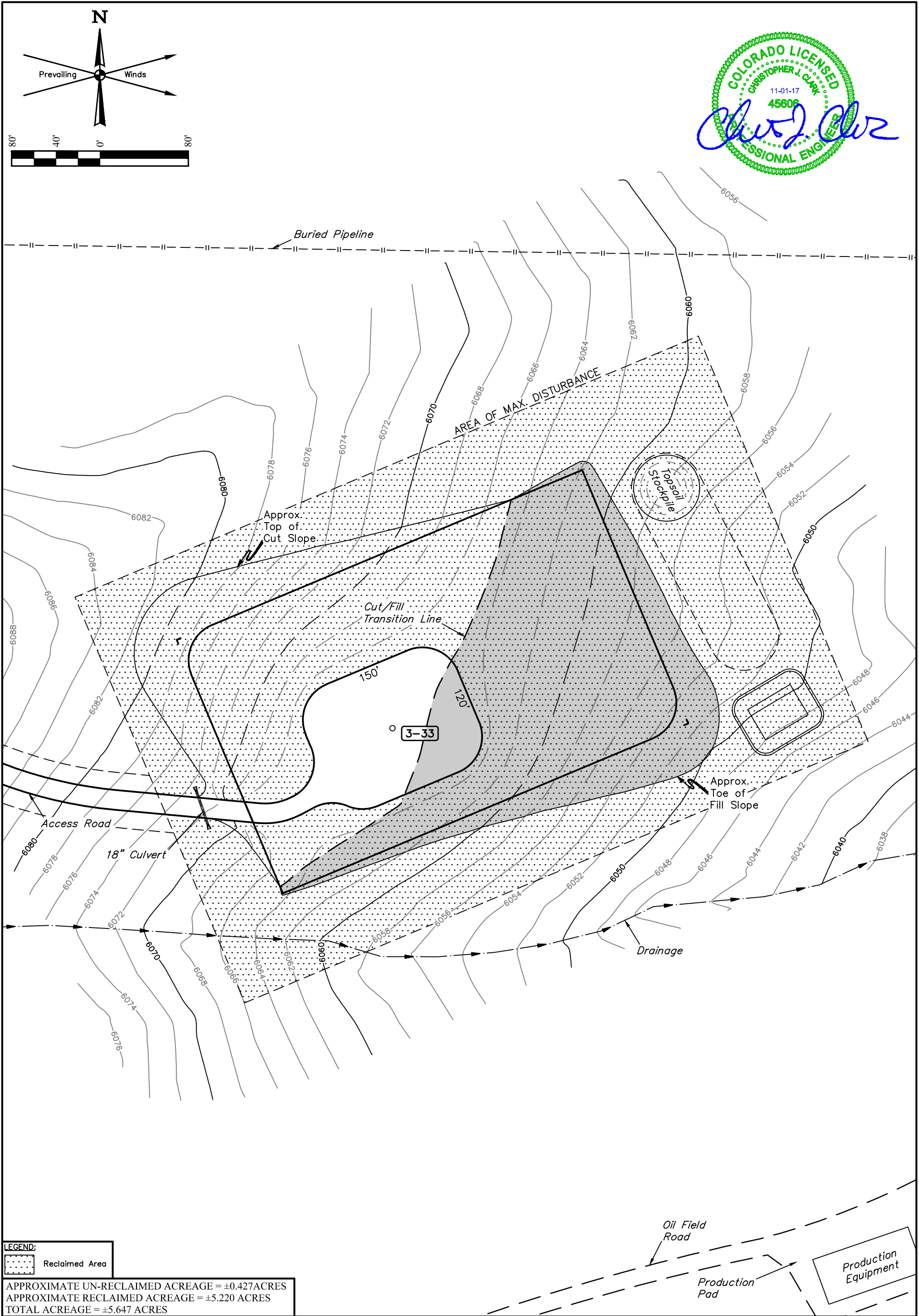
SURVEYED BY	CHAD MEIERS, G.B.	10-12-17	SCALE
DRAWN BY	K.B.	10-20-17	1" = 80'

**TYPICAL RIG LAYOUT**

**FIGURE #3**



**UELS, LLC**  
Corporate Office \* 85 South 200 East  
Vernal, UT 84078 \* (435) 789-1017



LEGEND:  
Reclaimed Area

APPROXIMATE UN-RECLAIMED ACREAGE = ±0.427 ACRES  
APPROXIMATE RECLAIMED ACREAGE = ±5.220 ACRES  
TOTAL ACREAGE = ±5.647 ACRES

NOTES:  
• Contours shown at 2' intervals.

### RENEGADE OIL AND GAS, LLC

STATE OF COLORADO #3-33  
600' FNL 720' FWL  
NW 1/4 NW 1/4, SECTION 33, T5S, R64W, 6th P.M.  
ARAPAHOE COUNTY, COLORADO

SURVEYED BY	CHAD MEIERS, G.B.	10-12-17	SCALE
DRAWN BY	K.B.	10-20-17	1" = 80'
INTERIM RECLAMATION PLAN			FIGURE #4



UELS, LLC  
Corporate Office \* 85 South 200 East  
Vernal, UT 84078 \* (435) 789-1017