



Company ANADARKO
Well HSR-SKELLY 9-26A
Field WATTENBERG
County WELD
State COLORADO

Location: API #: 05-123-16922
 LAT: 40.19400
 LONG: -104.73690
 SEC 26 TWP 3N RGE 66W
 Elevation 5037'
Other Services
 Permanent Datum
 Log Measured From 3227' TO SURFACE
 Drilling Measured From 8094'
 Elevation 5047'
 G.L. 5037'

Date 2-22-2018
Run Number 1
Depth Driller 8094'
Depth Logger 3227'
Bottom Logged Interval
Top Log Interval SURFACE
Open Hole Size 4.5"
Type Fluid WATER
Density / Viscosity 8.6
Max. Recorded Temp. 130.6
Estimated Cement Top
Time Well Ready 1330
Time Logger on Bottom 1400
Equipment Number 058
Location 2135499
Recorded By RYAN ALLES
Witnessed By JAMIE ROBINSON

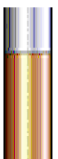
Borehole Record				Tubing Record			
Run Number	Bit	From	To	Size	Weight	From	To
Casing Record				Size			
Surface String				Wgt/Ft			
Prot. String				Top			Bottom
Production String							
Liner							

<<< Fold Here >>>

All interpretations are opinions based on inferences from electrical or other measurements and we cannot and do not guarantee the accuracy or correctness of any interpretation, and we shall not, except in the case of gross or willful negligence on our part, be liable or responsible for any loss, costs, damages, or expenses incurred or sustained by anyone resulting from any interpretation made by any of our officers, agents or employees. These interpretations are also subject to our general terms and conditions set out in our current Price Schedule.

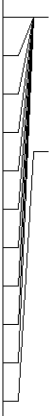
Comments

RAN CEMENT BOND LOG TO VERIFY CEMENT
 THANK YOU FOR USING CUTTERS WIRELINE

Sensor	Offset (ft)	Schematic	Description	Len (ft)	OD (in)	Wt (lb)
						

WVF3FT 9.44
 WVFCAL 9.44
 WVFS1 9.44
 WVFS2 9.44
 WVFS3 9.44
 WVFS4 9.44
 WVFS5 9.44
 WVFS6 9.44
 WVFS7 9.44
 WVFS8 9.44
 WVF5FT 8.44

9.44
 9.44
 9.44
 9.44
 9.44
 9.44
 9.44
 9.44
 9.44
 9.44
 8.44



CCL

4.75

GR

2.25

TEMP

0.08



RBT-Probe (060112_55)
 Probe 2.75" Radii Bond Tool

8.75

2.75

90.00

GR-Probe (060109)
 Probe 2.75" 4 Channel Pulse

4.00

2.75

30.00

TEMP-1.375TEMP (060110)
 Temperature Tool

1.25

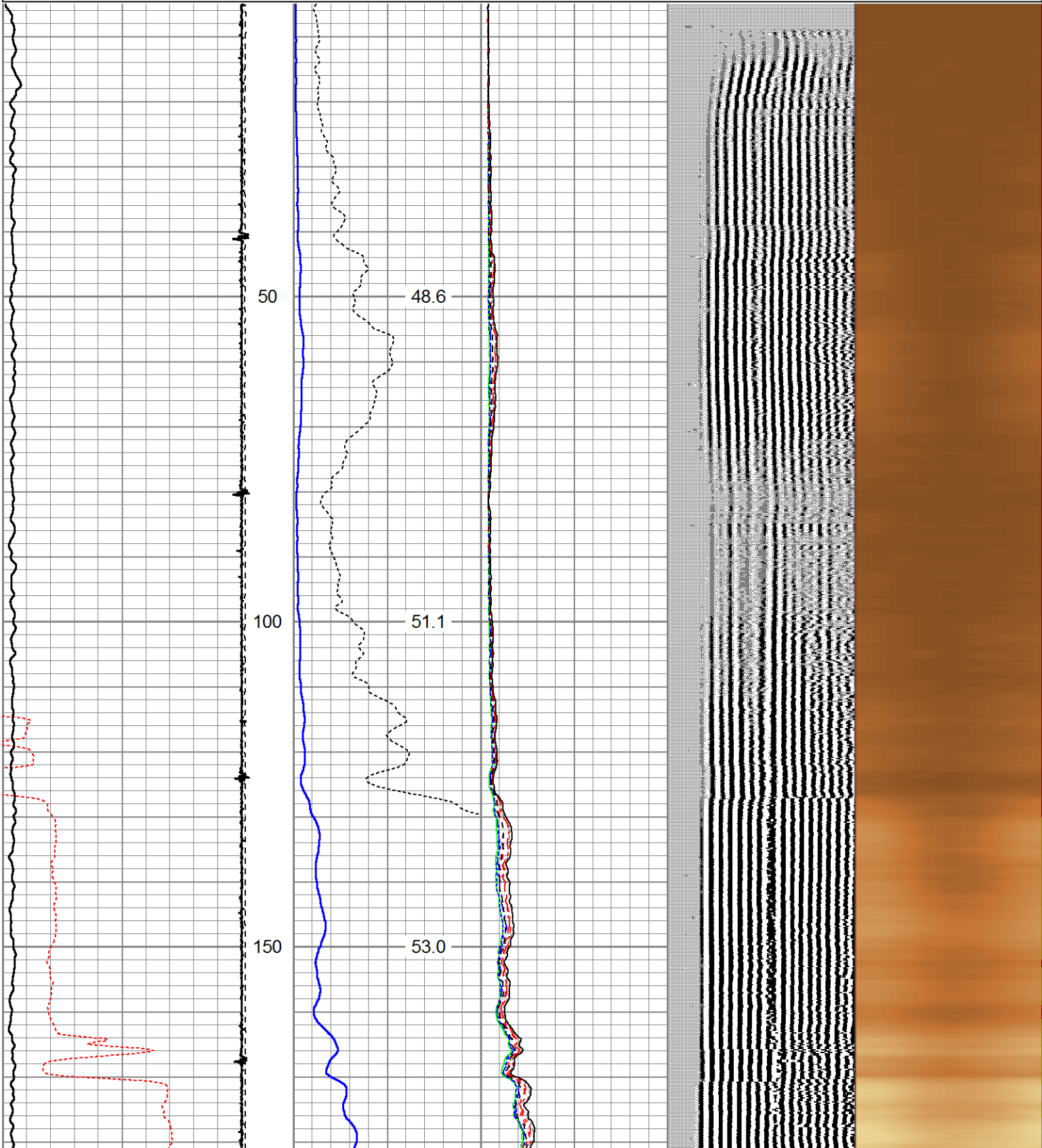
1.38

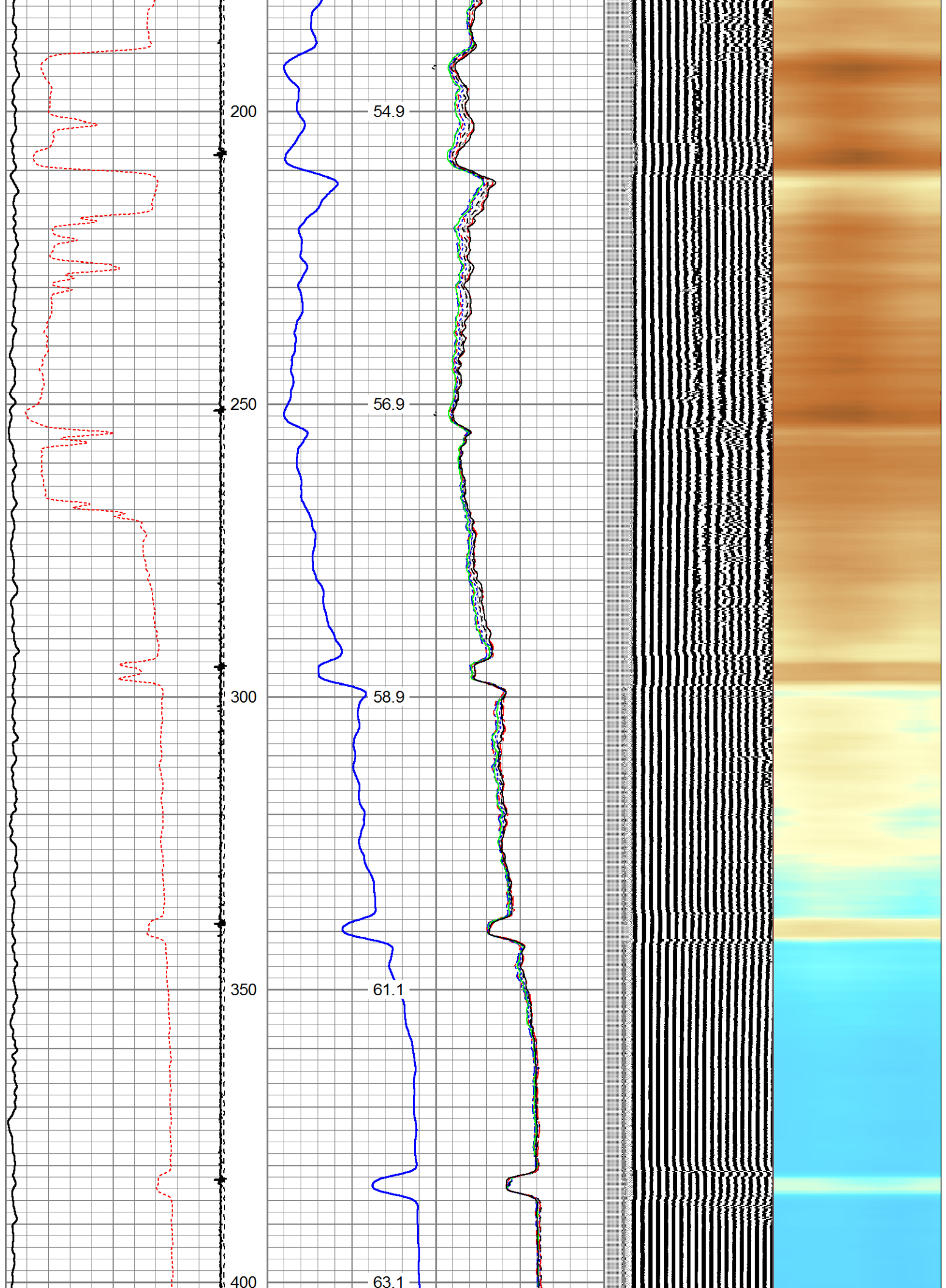
30.00

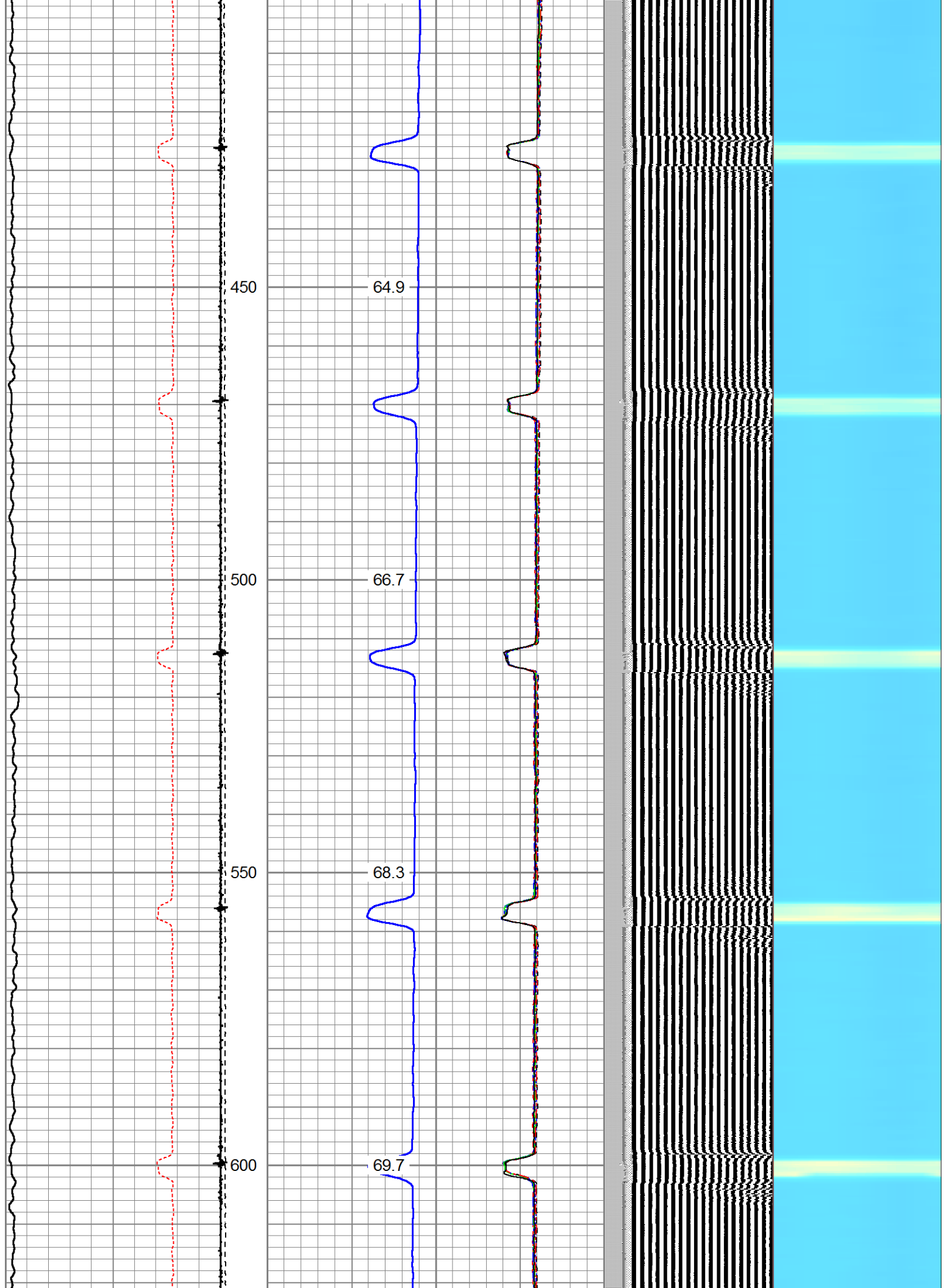
Dataset: hsr-skelly 9-26a.db: field/well/run1/pass12
 Total Length: 14.00 ft
 Total Weight: 150.00 lb
 O.D. 2.75 in

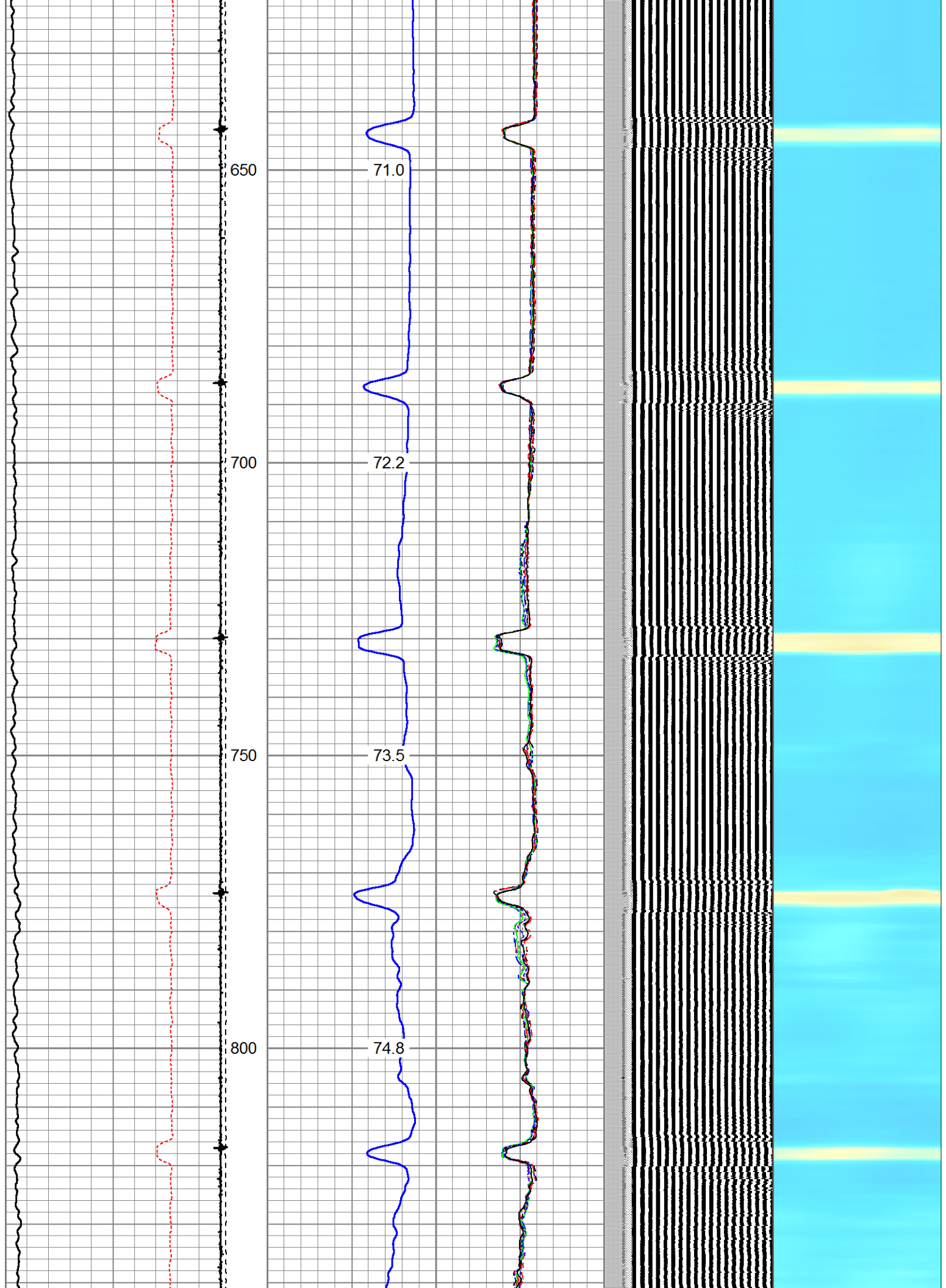
Database File: hsr-skelly 9-26a.db
 Dataset Pathname: pass12
 Presentation Format: rbl55
 Dataset Creation: Thu Feb 22 14:25:35 2018 by Log 7.0 B1
 Charted by: Depth in Feet scaled 1:240

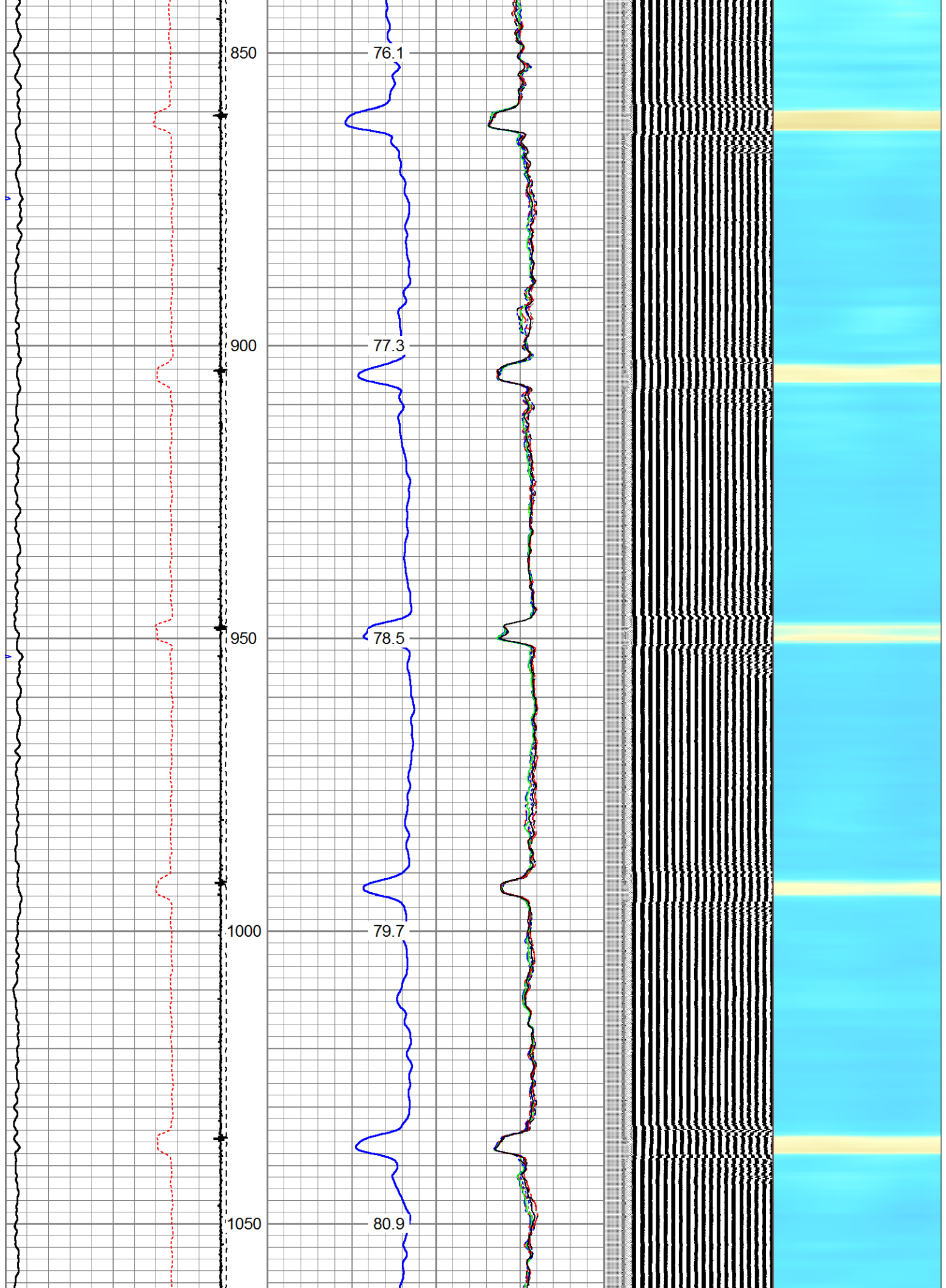
325	TT (usec)	225	LTEN	0	Amplitude (mV)	100	-5	AMPS2	150	200	VDL	1200	Cement Map	
2000	GR (GAPI)	4000	(lb)	0	Amplified Amplitude	(mV)	10	-5	AMPS3	150			1	100
			CCL	000				-5	AMPS4	150				
					TEMP			-5	AMPS5	150				
					(degF)			-5	AMPS6	150				
								-5	AMPS7	150				
								-5	AMPS8	150				
								-5	AMPS1	150				

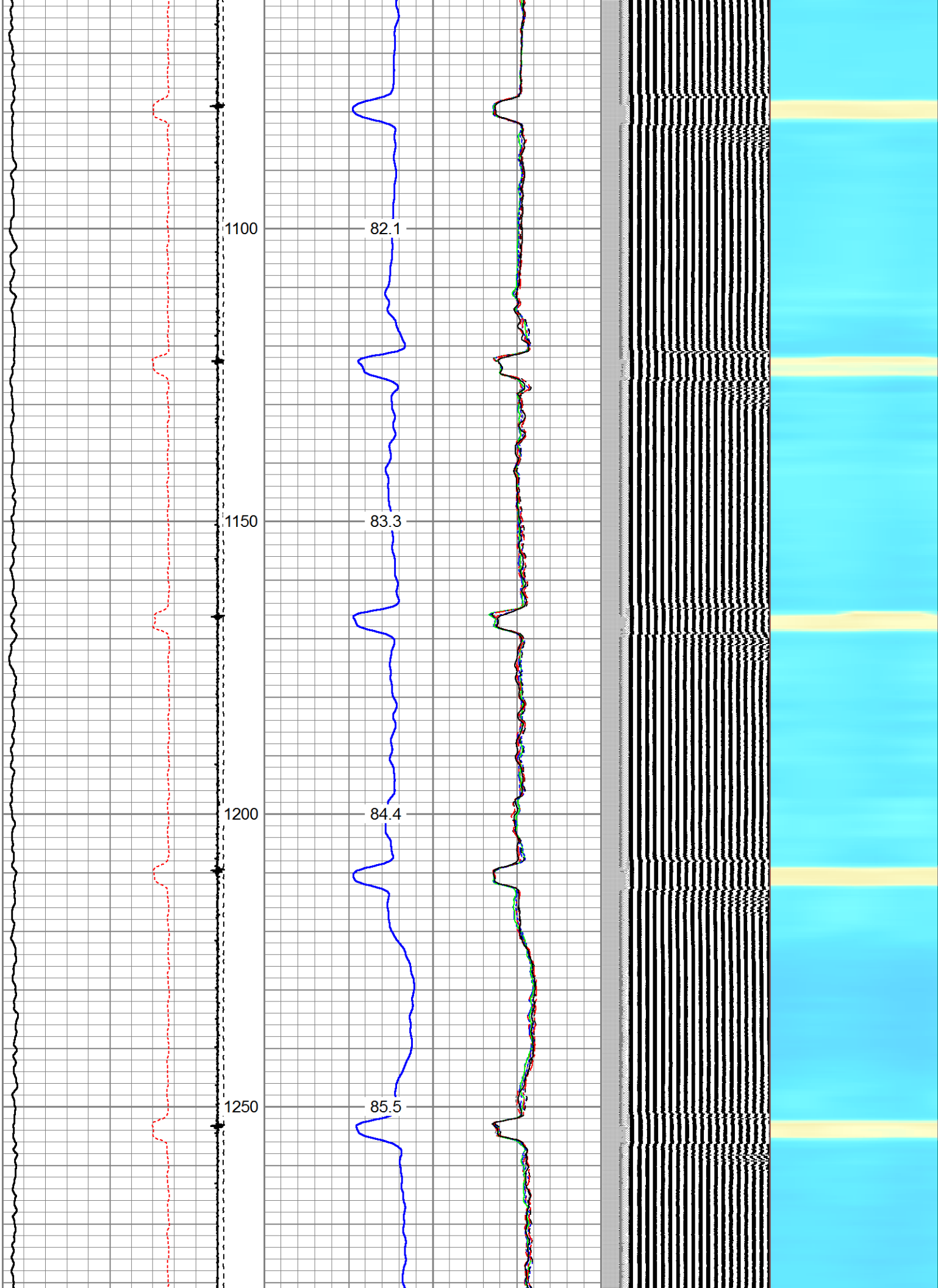


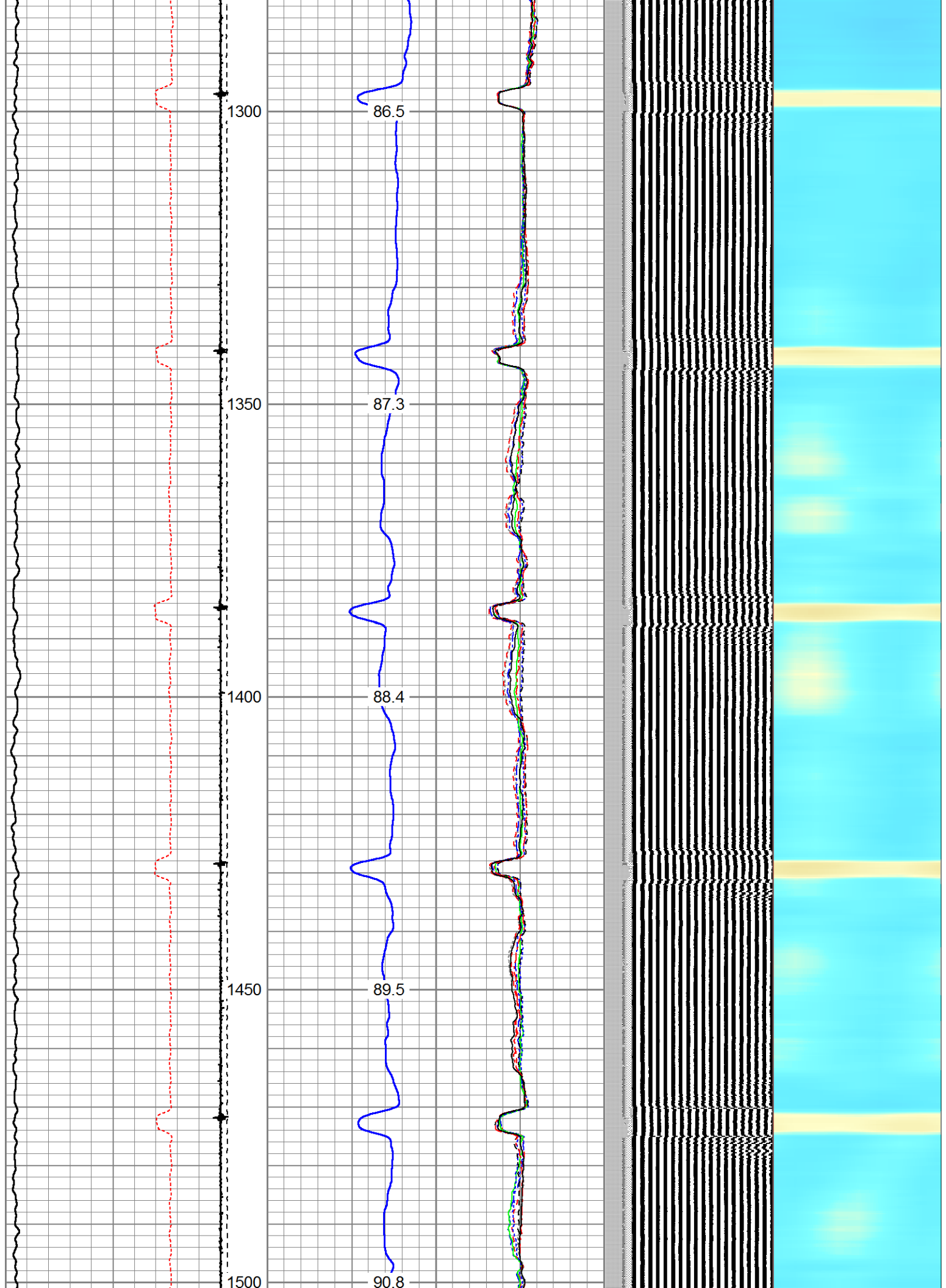


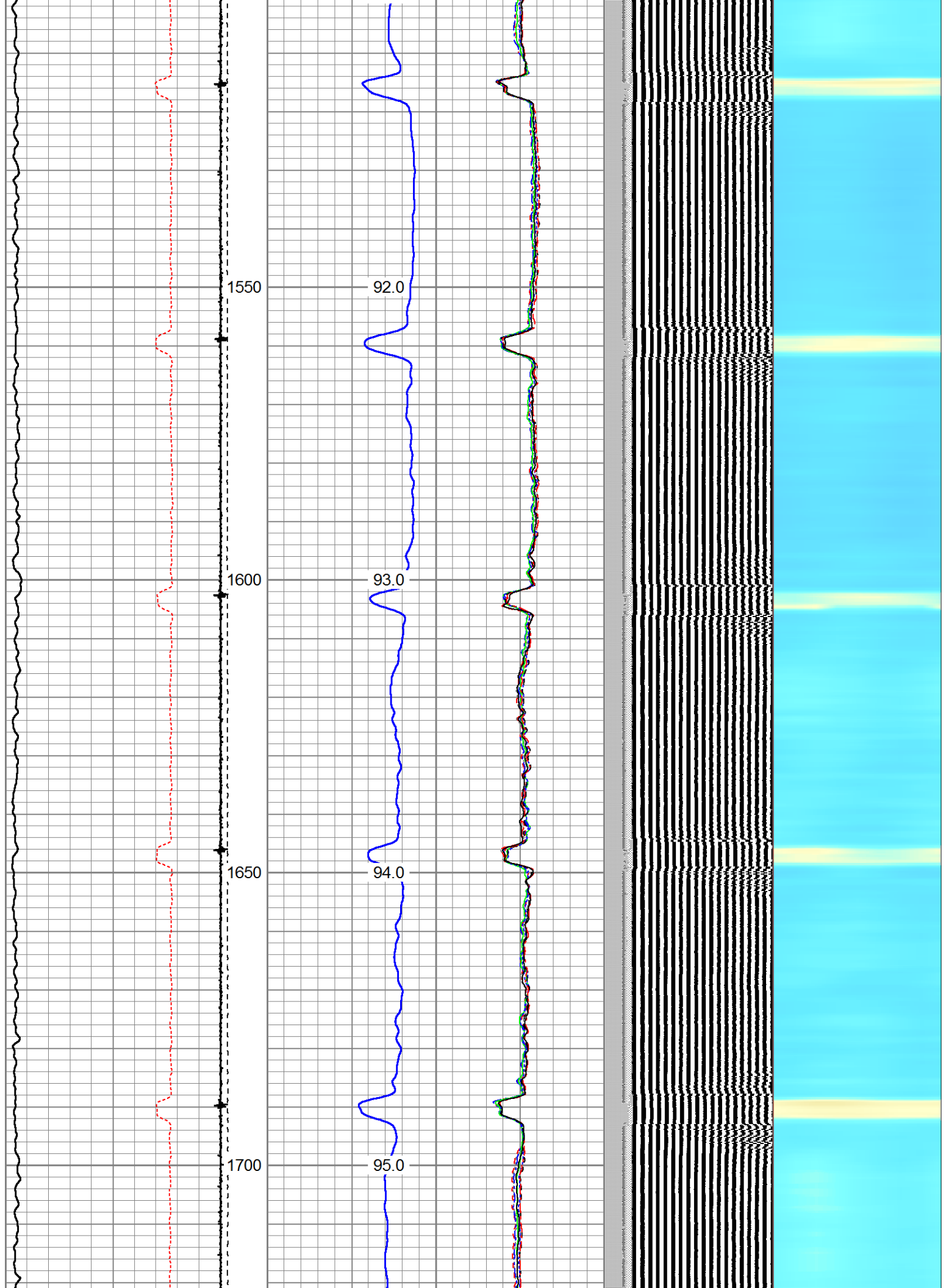


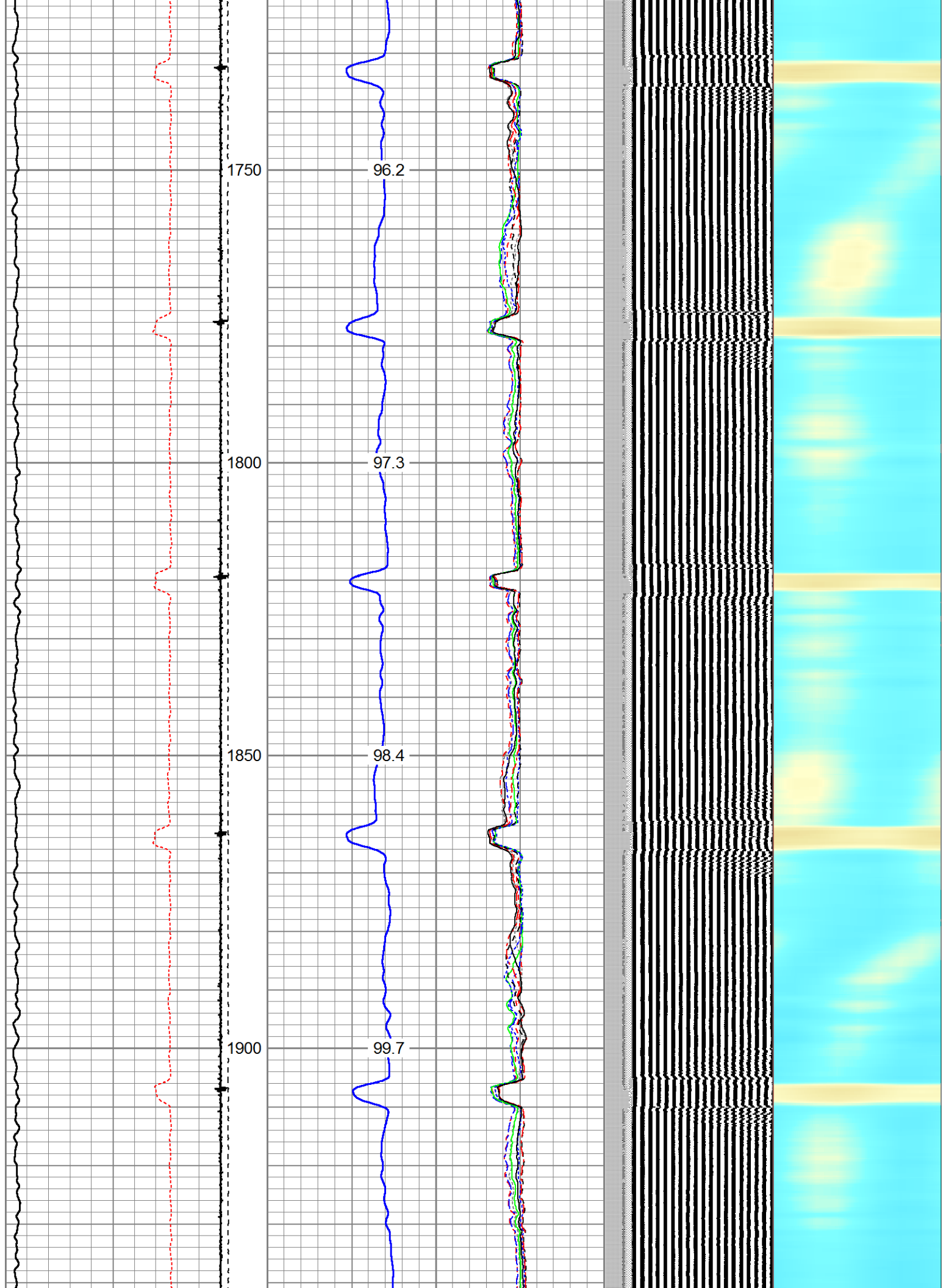


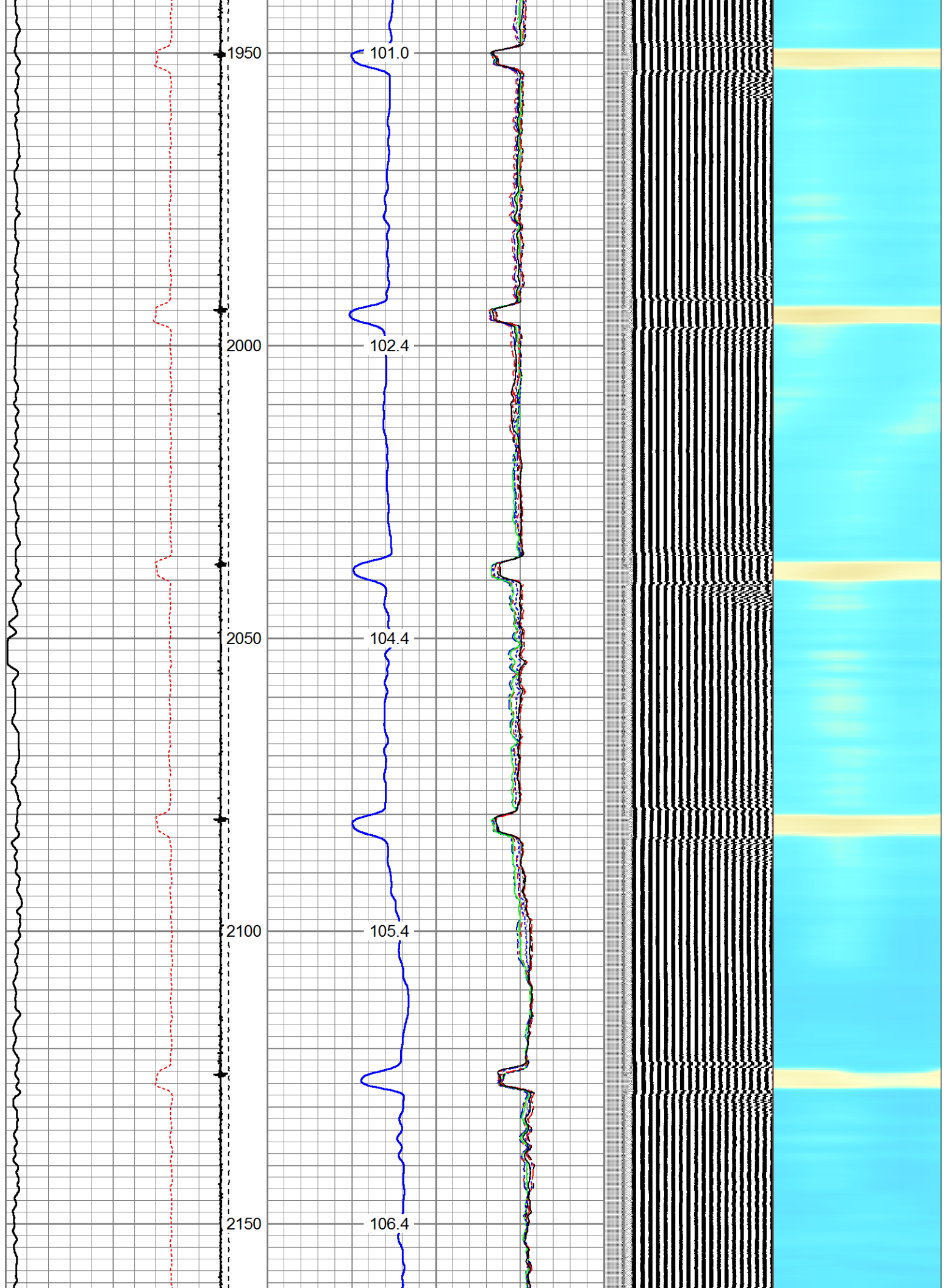


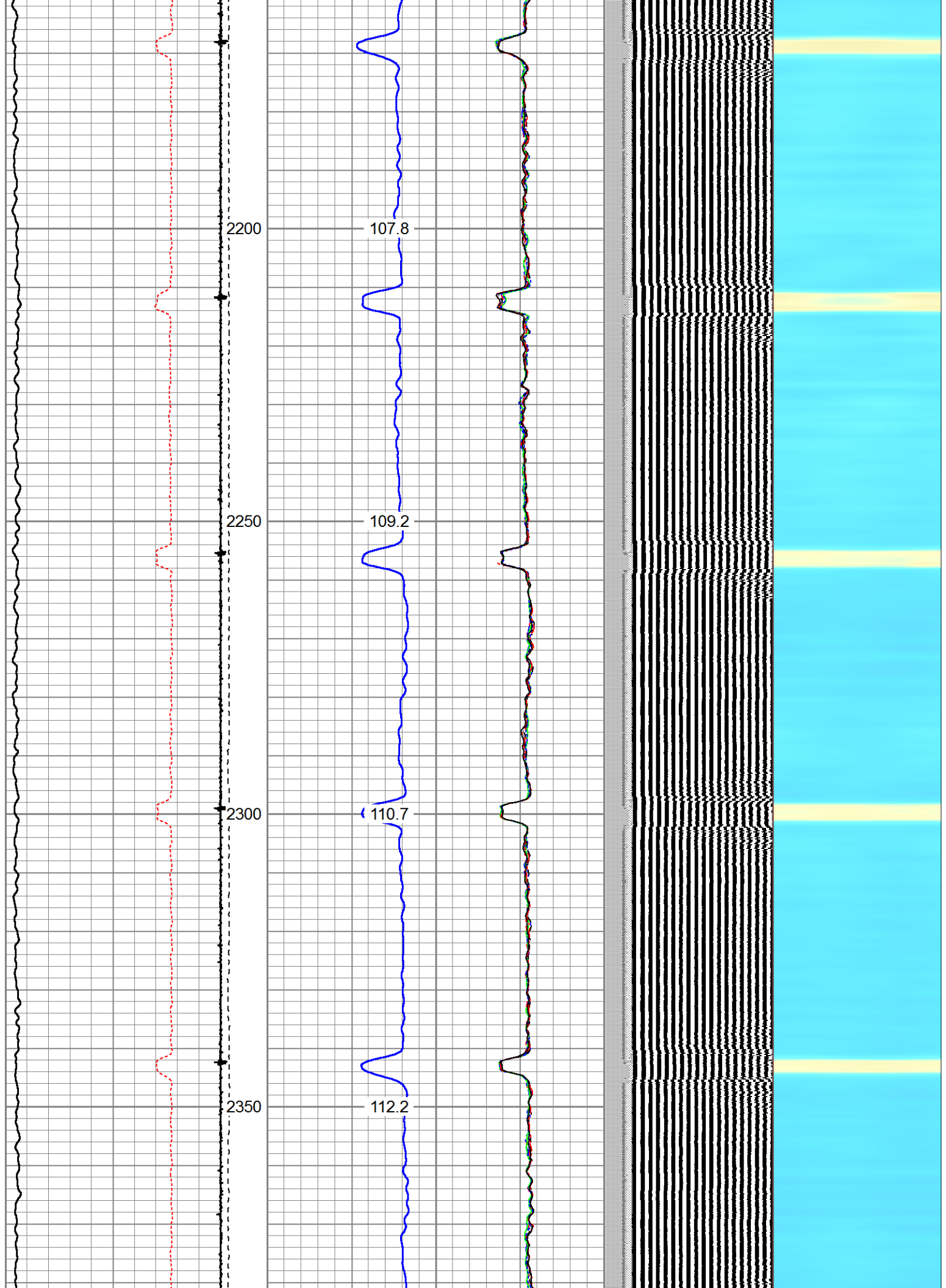


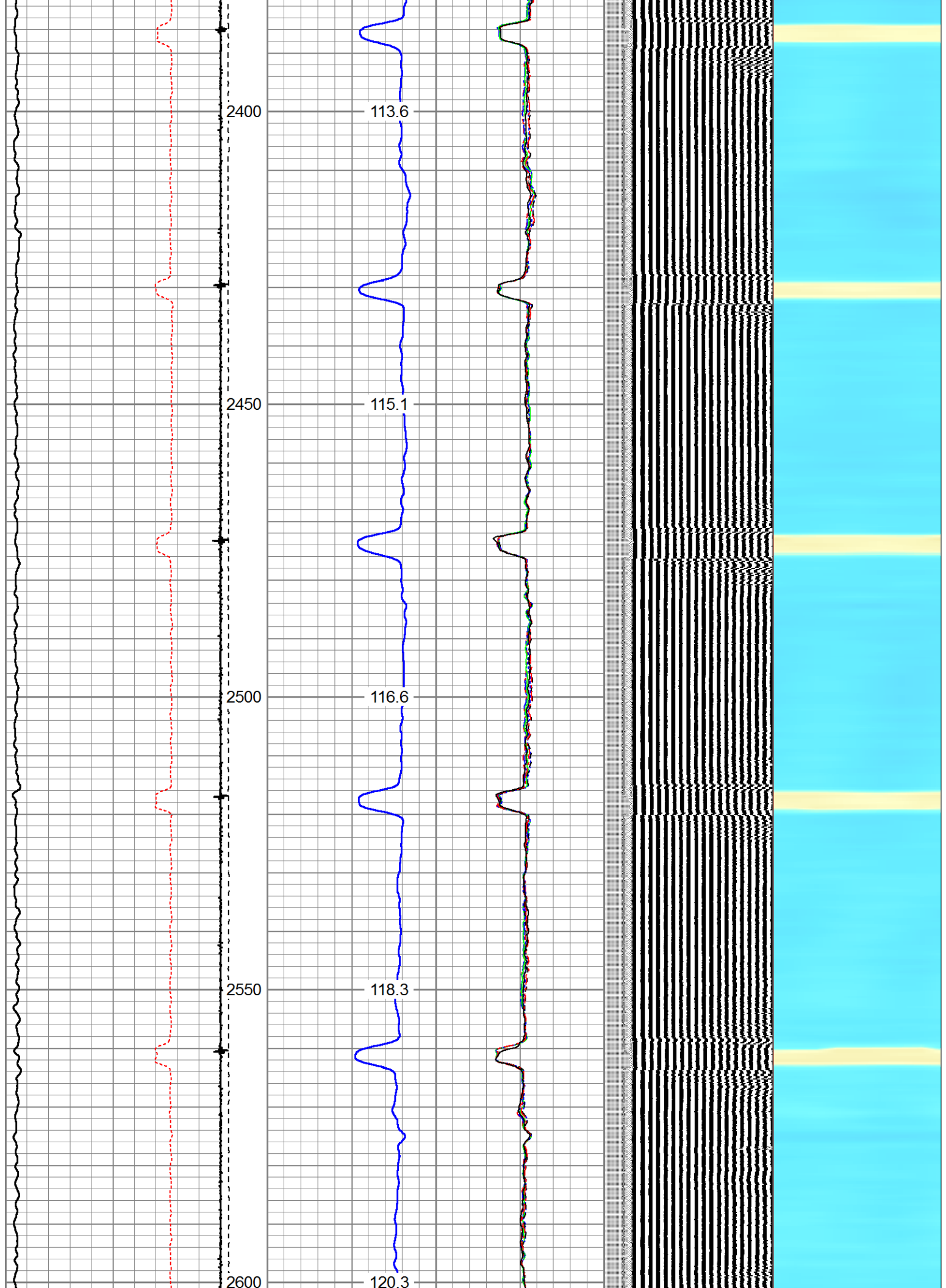


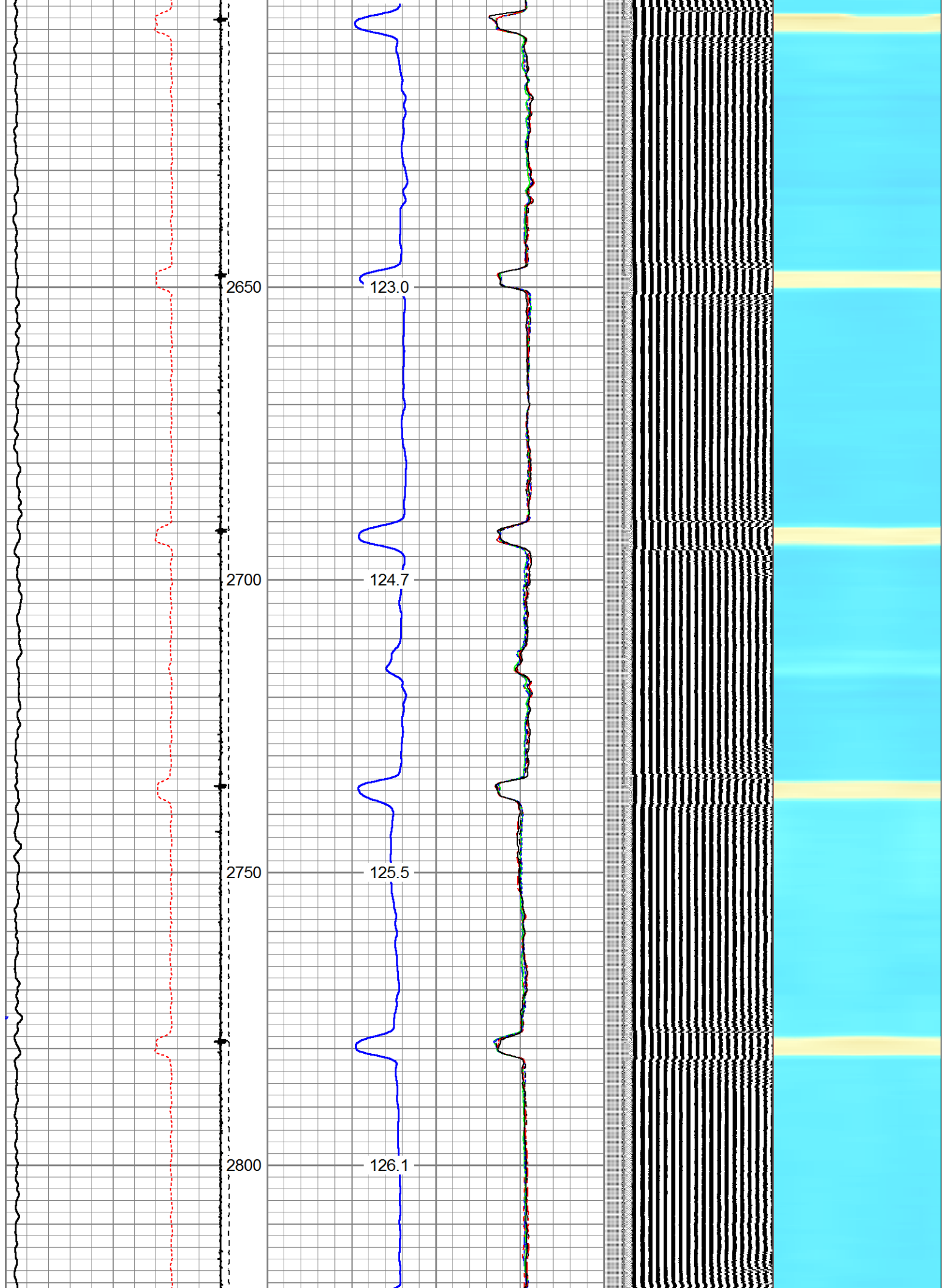


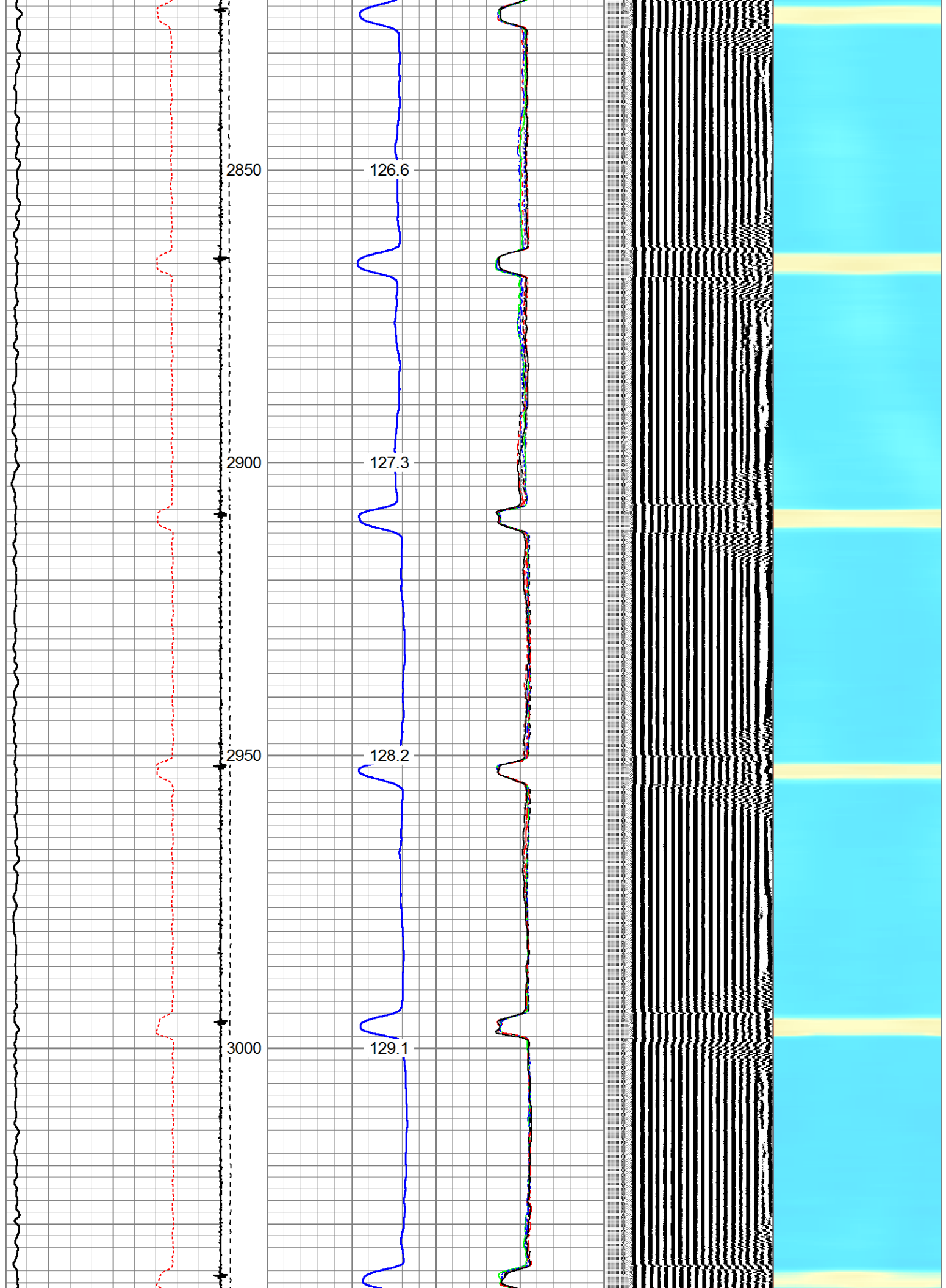


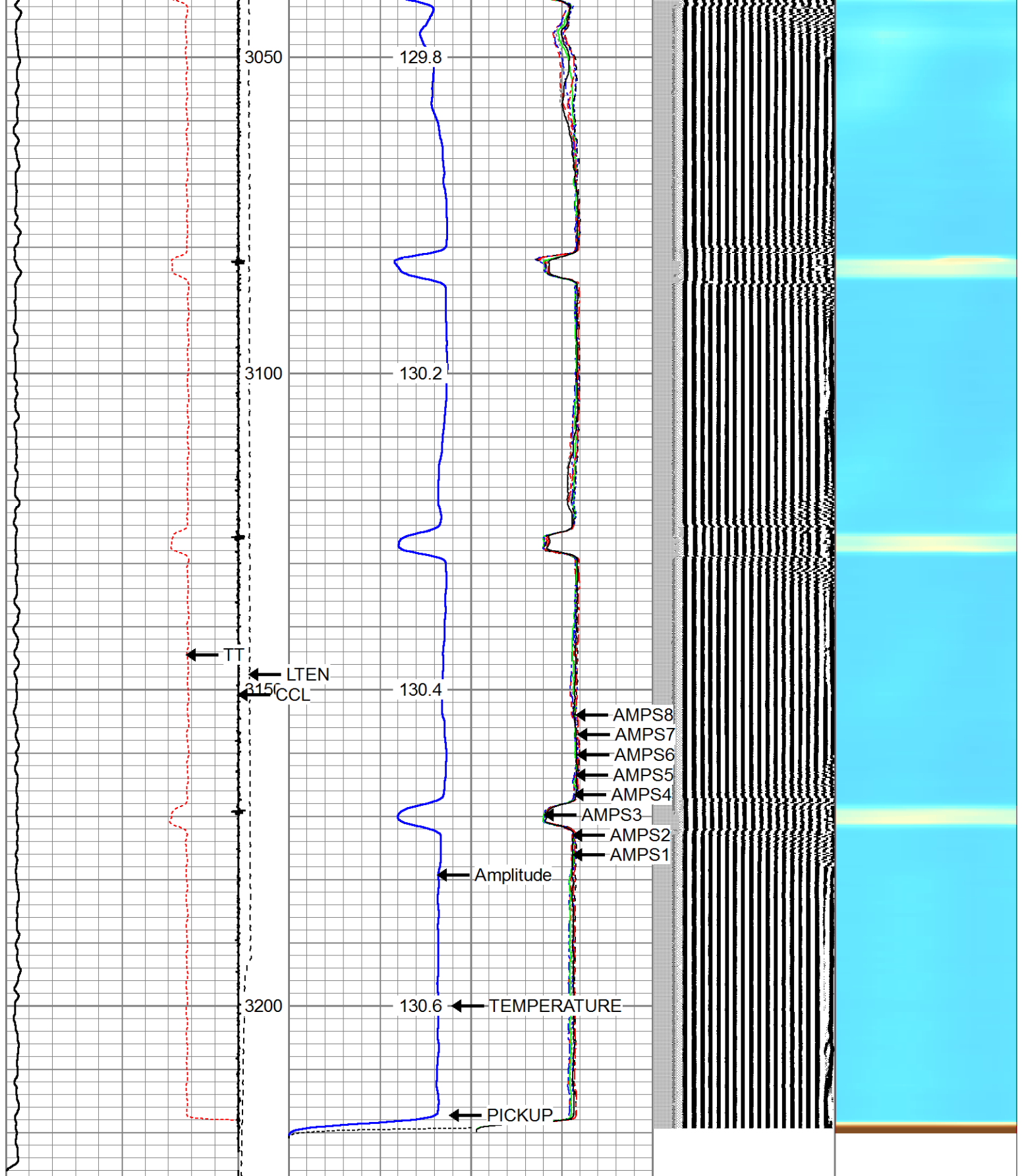












325	TT (usec)	225	LTEN	0	Amplitude (mV)	100	-5	AMPS2	150	200	VDL	1200	Cement Map
2000	GR (GAPI)	4000	(lb)	0	Amplified Amplitude	(mV)	10	-5	AMPS3	150			1
			CCL	000				-5	AMPS4	150			100
					TEMP			-5	AMPS5	150			
					(degF)			-5	AMPS6	150			
								-5	AMPS7	150			
								-5	AMPS8	150			



Company ANADARKO
Well HSR-SKELLY 9-26A
Field WATTENBERG
County WELD
State COLORADO