


116630

historic imagery-1993

Legend

-  40.940207, -108.746631
-  STATELAND 1

 STATELAND 1

 40.940207, -108.746631

Google<sup>™</sup> earth

Image U.S. Geological Survey



100 ft



116630

**Legend**

-  40.940207, -108.746631
-  STATELAND 1

 STATELAND 1

 40.940207, -108.746631

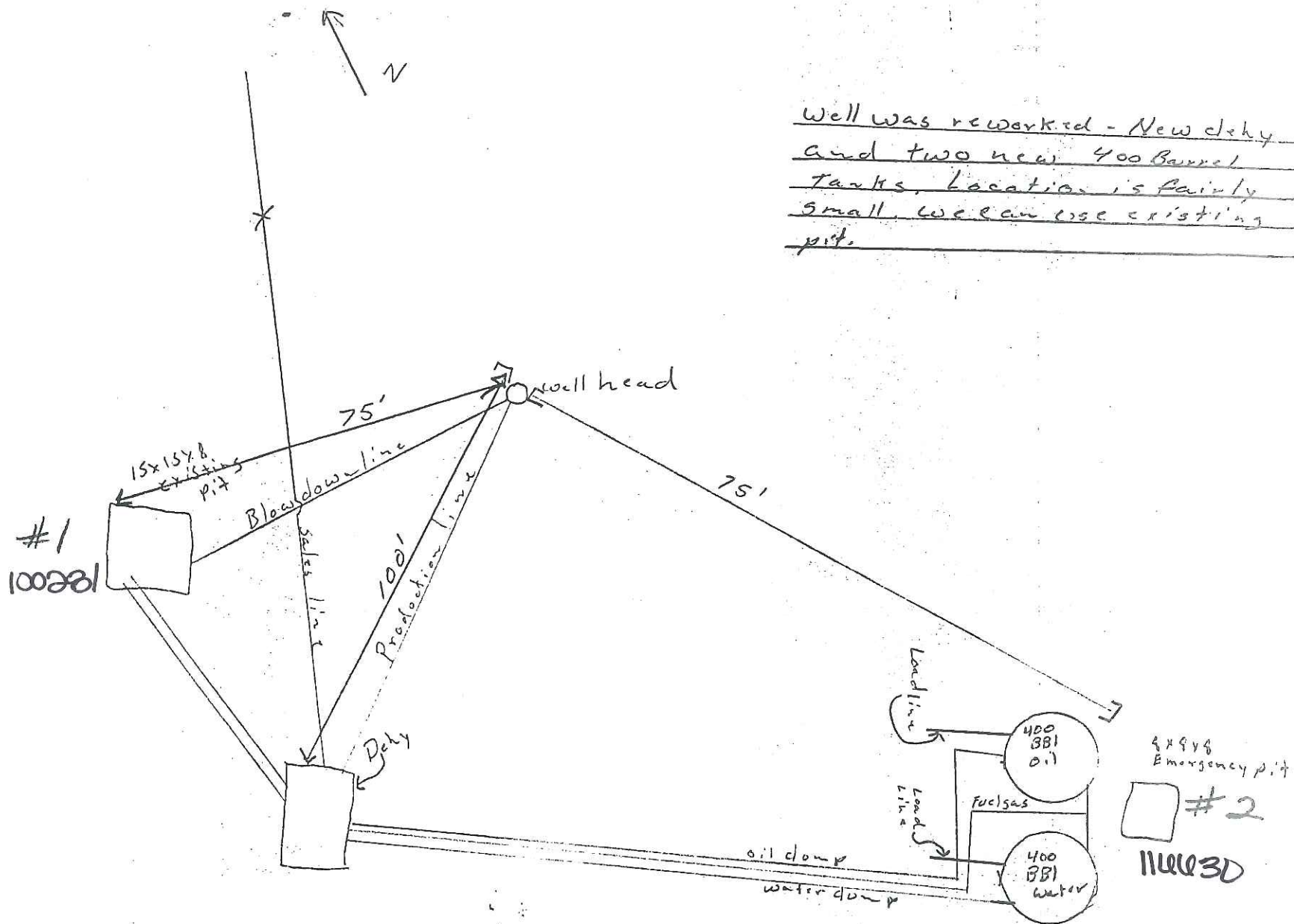


Google earth

100 ft



Well was reworked - New clay  
and two new 400 Barrel  
tanks. Location is fairly  
small. we can use existing  
pit.

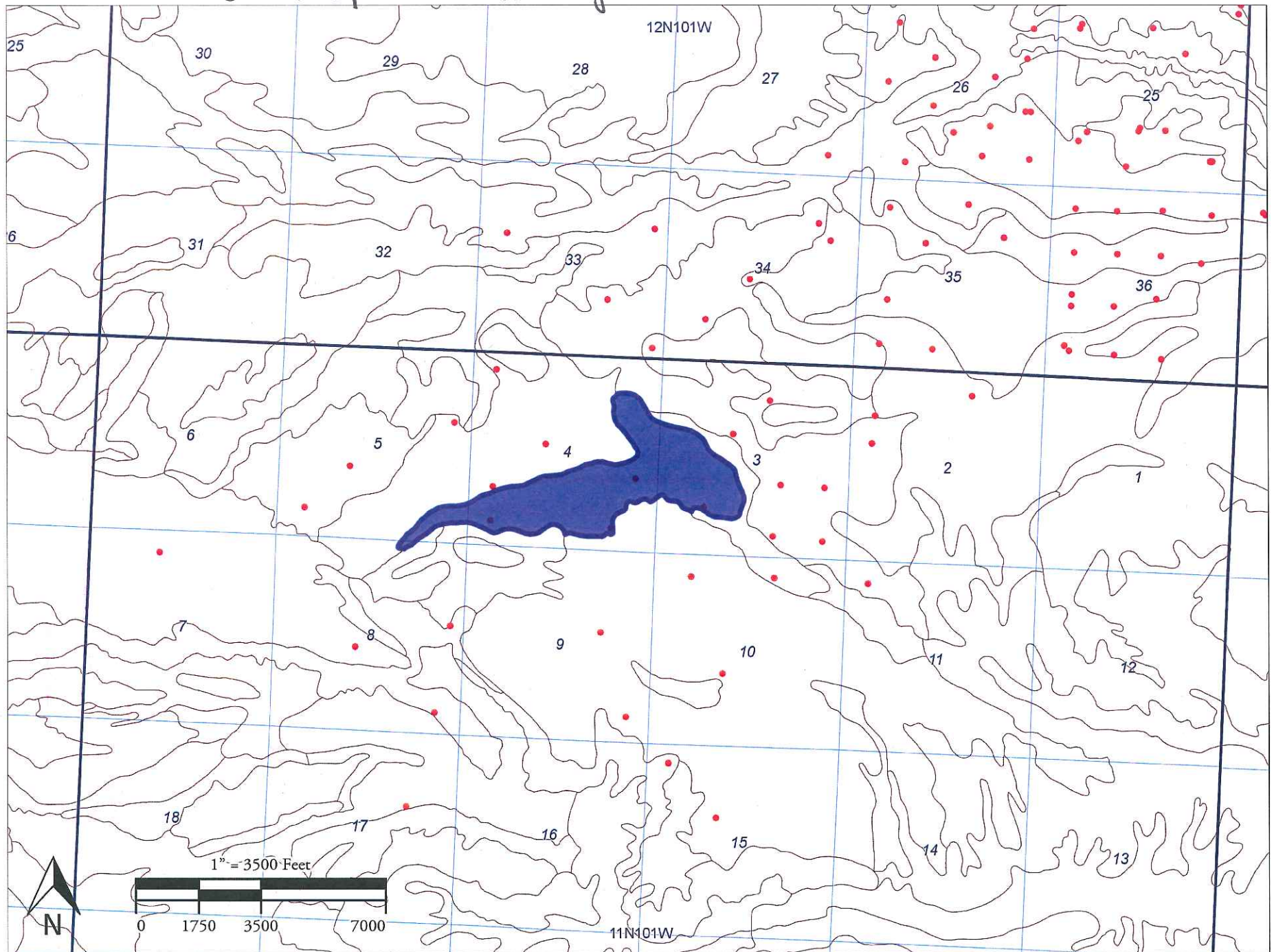


Sugar Loaf State Land Well No 1  
NESE Sec 4-11-101  
C-2849  
Wenpro Co. Operator

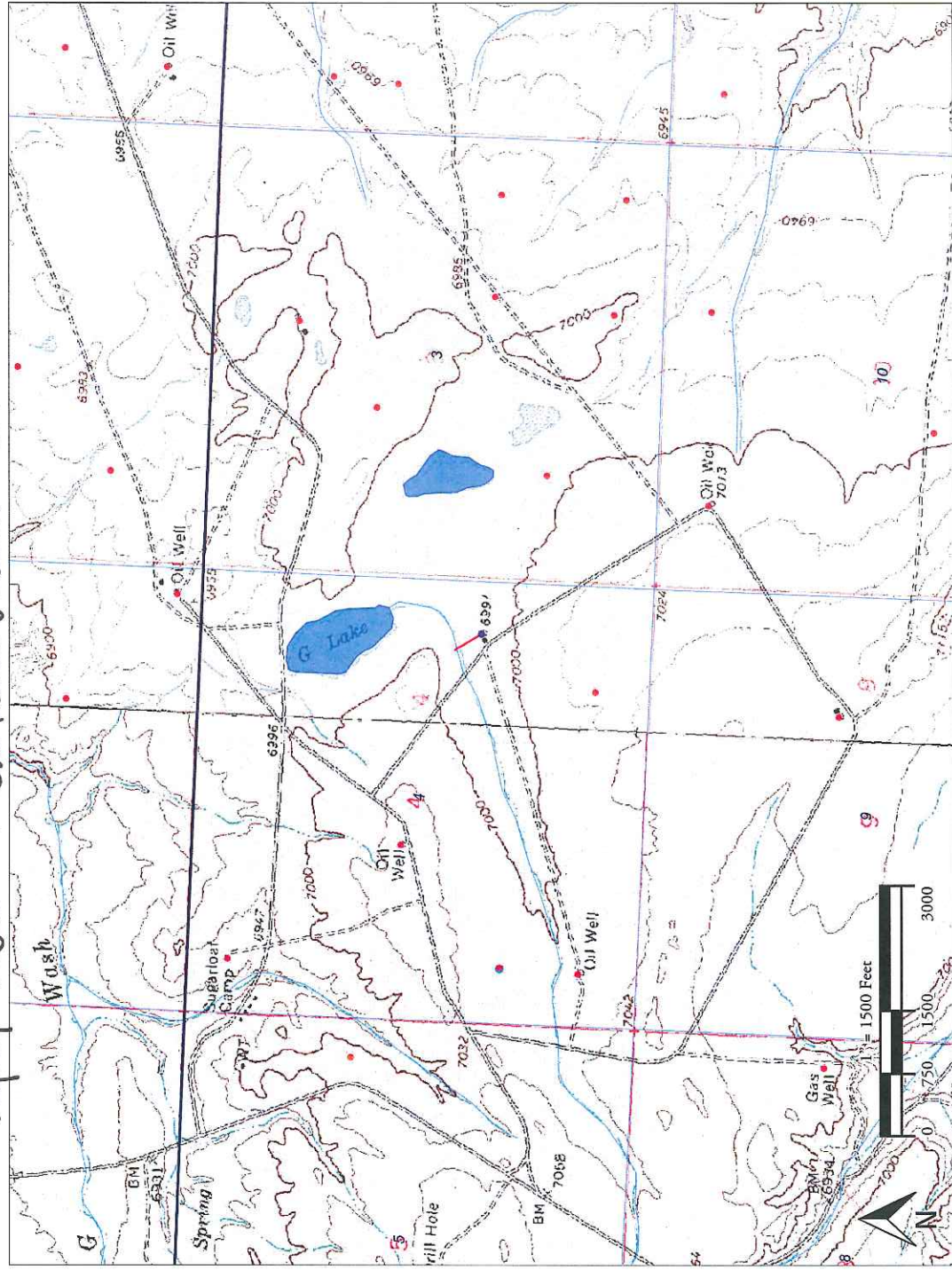




# Soil map: Leswill Radrube complex



Topo/ Nearest surface water - 341'







Wexpro Company  
2221 Westgate Dr.  
P.O. Box 458  
Rock Springs, WY 82902  
Tel (307) 352-7500  
Fax (307) 352-7575

Jimmy L. Druce  
General Manager  
Direct: (307)352-7555  
[Jimmy.Druce@questar.com](mailto:Jimmy.Druce@questar.com)

5/19/2016

Kris Neidel  
COGCC  
1120 Lincoln St., Suite 801  
Denver, CO 80203

Pit Maintenance and History in Wexpro Company Hiawatha/Powder Wash fields

Dear Mr. Neidel:

I worked as an Operator/Chief Operator in Colorado's Powder Wash and Hiawatha fields for Wexpro Company between the years of 1984 and 2002. Upon my hiring, Carl Foster, who also worked for Wexpro, taught myself and the other operators procedures for production/water drain pit cleaning/maintenance.

The procedures were as follows; For several years pit with visible oil in them were either burned or soaked with hot water and skimmed. Burning of the pits was standard until regulations prohibited the practice.

When soaking and skimming would occur, hot water would be added to the pits. After the addition of hot water to the pits, the pits were allowed to "soak" for a minimum of 3 hours allowing the oil to separate from the water and come to the surface. After the oil and water separated, the oil would be skimmed off via tanker truck and the pits drained of water. Oil skimmed from the pits would be added to the condensate tanks, and the water would be added to the water tanks or hauled for disposal at a commercial source. This process was repeated continuously until there was no more visible oil in the pits.

This procedure was passed along during and after my departure from the Hiawatha and Powder Wash fields, and continues to be used today.

Kind regards,

  
Jimmy Druce  
General Manager

For questions, please call April Stegall at 307-352-7561 or 307-371-3610.