

# HALLIBURTON

iCem<sup>®</sup> Service

## **TERRA ENERGY PARTNERS-EBUS**

**For: Terra**

Date: Friday, March 02, 2018

**SR 413-12 Squeeze**

API#05-045-23443

Sincerely,

**Grand Junction Cement Engineering**

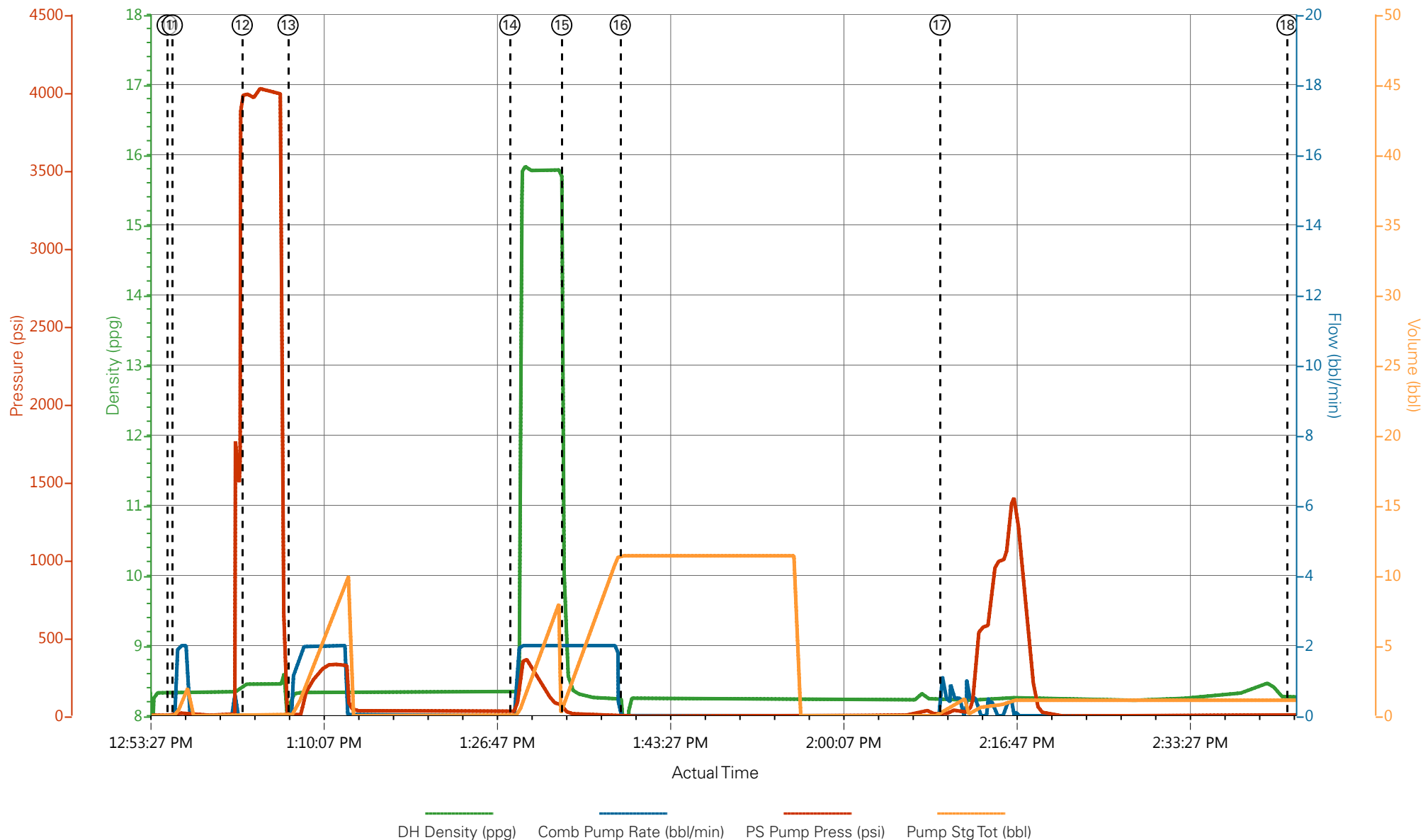
## 2.0 Real-Time Job Summary

## 2.1 Job Event Log

Type	Seq. No.	Graph Label	Date	Time	Source	DH Density (ppg)	Comb Pump Rate (bbl/min)	PS Pump Press (psi)	Pump Stg Tot (bbl)	Comments
Event	1	Call Out	3/2/2018	06:00:00	USER					
Event	2	Pre-Convoy Safety Meeting	3/2/2018	08:00:00	USER					
Event	3	Arrive At Loc	3/2/2018	10:30:00	USER					RIG RUNNING TUBING
Event	4	Assessment Of Location Safety Meeting	3/2/2018	10:45:00	USER					WOC SIGNED BY OSR
Event	5	Pre-Rig Up Safety Meeting	3/2/2018	11:00:00	USER					JSA COMPLETE
Event	6	Rig-Up Equipment	3/2/2018	11:10:00	USER					ONE LINE TO TUBING, "T" OFF TO WASH UP TANK
Event	7	Other	3/2/2018	11:10:52	USER					2 3/8, 4.7# TUBING RAN TO 3937, HOLE IN 4.5 11.6# CASING AT 3876 FT.
Event	8	Other	3/2/2018	11:12:00	USER					WATER TEST: PH-7, CL-0
Event	9	Pre-Job Safety Meeting	3/2/2018	12:30:00	USER					JSA COMPLETE
Event	10	Start Job	3/2/2018	12:55:21	COM5					
Event	11	Prime Pumps	3/2/2018	12:55:51	COM5					FRESH WATER
Event	12	Pressure Test	3/2/2018	13:02:35	USER	8.33	0.00	3996.00	0.0	GOOD
Event	13	Pump Spacer 1	3/2/2018	13:06:59	COM5	8.33	2.0	150	10	FRESH WATER CIRCULATION WAS ESTABLISHED
Event	14	Pump Cement	3/2/2018	13:28:19	COM5	15.8	2.0	80	8.2	40 SKS, 15.8 PPG, 1.15 FT3/SK, 4.64 GAL/SK
Event	15	Pump Displacement	3/2/2018	13:33:19	USER	8.33	2.00	34.00	12.5	FRESH WATER
Event	16	Shutdown	3/2/2018	13:38:56	USER					RIG PULLED TUBING ABOVE PLUG
Event	17	HESITATE	3/2/2018	14:09:42	USER	8.33	0.5	1200	1.5	START HESITATE. PSI UP 2 TIMES THEN WENT ON SUCTION FOR 5.5 BBLS, SHUT IN AT TUBING

Event	18	End Job	3/2/2018	14:43:06	COM5	
Event	19	Post-Job Safety Meeting (Pre Rig-Down)	3/2/2018	14:59:53	USER	JSA COMPLETE
Event	20	Rig-Down Equipment	3/2/2018	15:00:00	USER	
Event	21	Crew Leave Location	3/2/2018	15:45:00	USER	THANK YOU FOR USING HALLIBURTON CEMENT, JAMES LEIST AND CREW

# TEP - SR 413-12 - SQUEEZE



- |   |                          |                     |  |                        |
|---|--------------------------|---------------------|--|------------------------|
| ① Call Out                              | ⑥ Rig-Up Equipment       | ⑪ Prime Pumps       | ⑯ Shutdown                               | 21 Crew Leave Location |
| ② Pre-Convoy Safety Meeting             | ⑦ Other                  | ⑫ Pressure Test     | ⑰ HESITATE                               |                        |
| ③ Arrive At Loc                         | ⑧ Other                  | ⑬ Pump Spacer 1     | ⑱ End Job                                |                        |
| ④ Assessment Of Location Safety Meeting | ⑨ Pre-Job Safety Meeting | ⑭ Pump Cement       | ⑲ Post-Job Safety Meeting (Pre Rig-Down) |                        |
| ⑤ Pre-Rig Up Safety Meeting             | ⑩ Start Job              | ⑮ Pump Displacement | 20 Rig-Down Equipment                    |                        |

▼ **HALLIBURTON** | iCem® Service

Created: 2018-03-02 08:10:55, Version: 4.2.393

Edit

Customer : TERRA ENERGY PARTNERS-EBUS

Job Date : 3/2/2018 11:42:12 AM

Well : SR 413-12

Representative :

Sales Order # : 904686727

ELITE 1 : WES GOWEN / J. LEIST

# TEP - SR 413-12 - SQUEEZE

