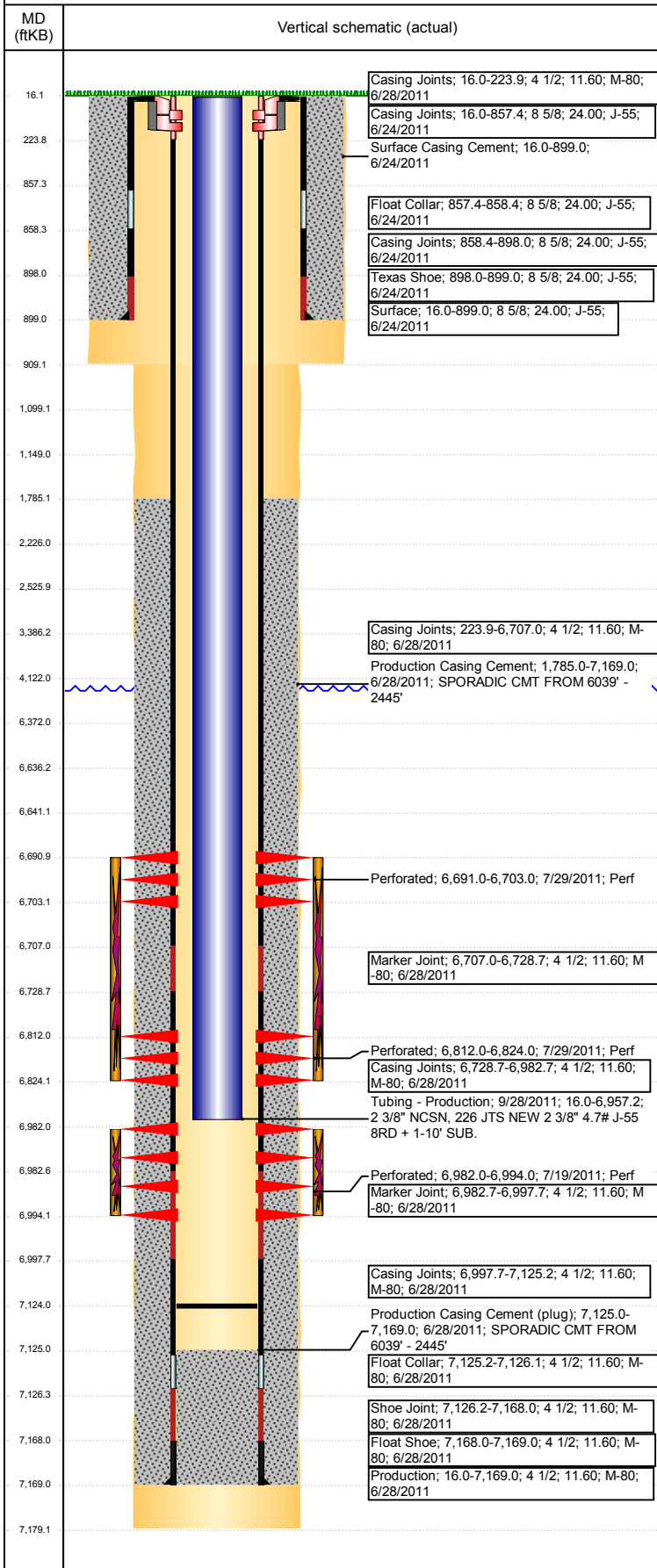


Wellbore Schematic Input Report

Well Name: HOWARD A27-17D

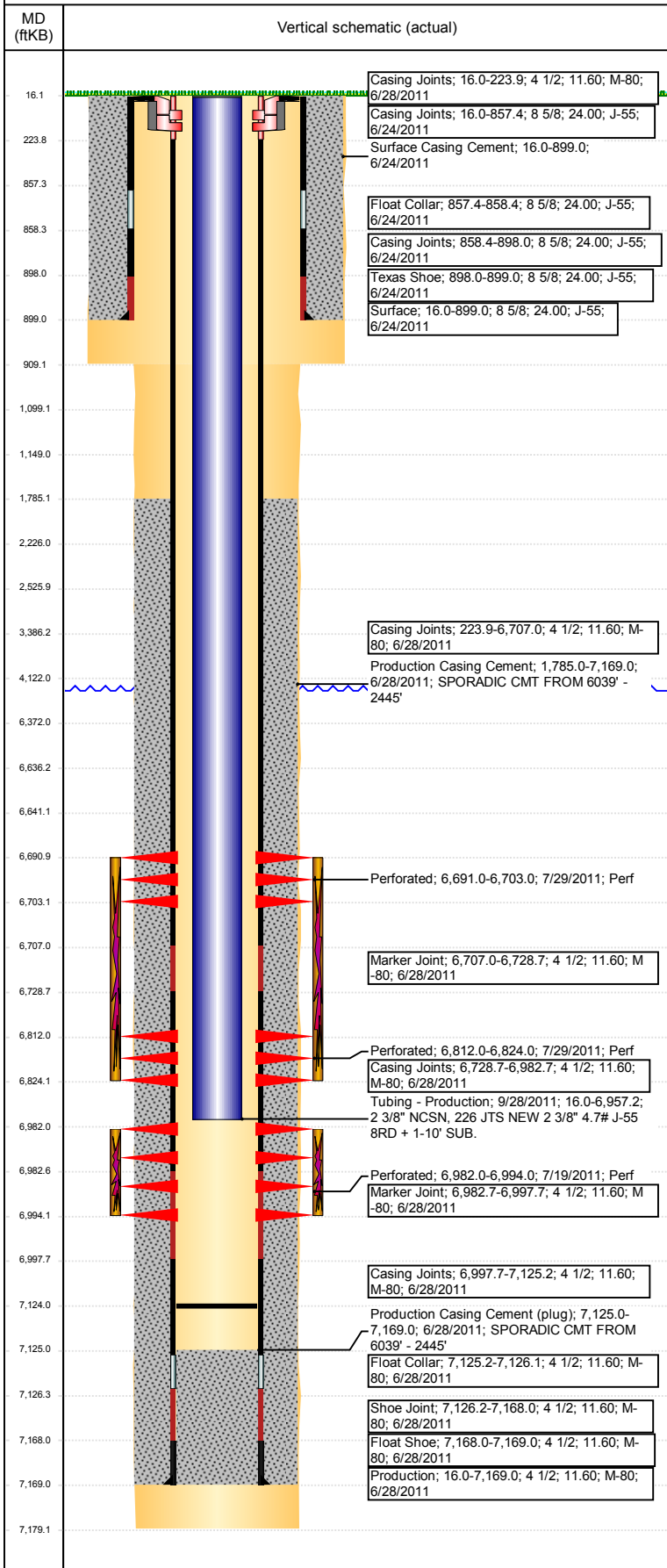
DEVIATED - ORIGINAL HOLE, 4/8/2018 3:58:38 PM



Well Header						
API 05-123-33034		Well Report Center 425807262		Well Configuration Type DEVIATED		
Original KB Elevation (ft) 4,713		KB - GL / MSL (ftKB) 16.00		Spud Date 6/23/2011		P & A Date
Production Route Watt - B3-06			Well Production Status PR			SoRT Ignore No
Directions To Well FROM CR 66 ON CR 57, SOUTH 2/10, WEST, INTO LOCATION.				Actual Latitude (°) 40.46259508		Actual Longitude (°) -104.52909480
Comment						
Congressional Location						
Quarter 3 NE	Quarter 4 NE	Section 27	Township 6	Twnshp N/S Dir N	Range 64	Range E/W Dir W
Rig Operator						
Rig Operator						
Plug Back Total Depths						
Date	Depth (ftKB)	Method		Com		
9/27/2011	7,124.0	TBG TALLY				
Wellbore Sections						
Section Des		Size (in)		Act Top, MD (ftKB)		Act Btm, MD (ftKB)
SURFACE		12 1/4		16		909
PRODUCTION		7 7/8		909		7,179
Zone Statuses						
Zone Name		Status Date			Status	
NIOBRARA		8/23/2011			PR	
CODELL		4/28/2017			PR	
Casing Strings						
Surface, 899.0ftKB						
Casing Description Surface	Run Date 6/24/2011	OD (in) 8 5/8	Wt/Len (l... 24.00	Grade J-55	Top, MD (ft... 16.0	MD (ftKB) 899.0
Production, 7,169.0ftKB						
Casing Description Production	Run Date 6/28/2011	OD (in) 4 1/2	Wt/Len (l... 11.60	Grade M-80	Top, MD (ft... 16.0	MD (ftKB) 7,169.0
Cement						
Des		Start Date		Top (ftKB)		Btm (ftKB)
Surface Casing Cement		6/24/2011		16.0		899.0
Production Casing Cement		6/28/2011		1,785.0		7,169.0
Proposed Cement						
Des				Top (ftKB)		Btm (ftKB)
Balance Plug				6,372.0		6,636.0
Balance Plug				3,386.0		4,122.0
Balance Plug				2,226.0		2,526.0
Balance Plug				16.0		1,099.0
Balance Plug				1,099.0		1,149.0
Tubing Strings						
Tubing Description Tubing - Production	Run Date 9/28/2011	String... 2 3/8	ID (in) 2.00	Wt (lb/ft) 4.70	Grade J-55	Len (ft) 6,941.16 Set De... 6,855.9
Tubing Components						
Item Des	OD (in)	Wt (lb/ft)	Grade	Jts	Len (ft)	Btm (ftKB) Btm (TVD) (ftKB)
Tubing Pup Joint	2 3/8	4.70	J-55	1	10.00	26.0
EUE 8rd Tubing	2 3/8	4.70	J-55	226	6,929.51	6,955.5
Seating Nipple	2 3/8	5.40	J-55	1	1.20	6,956.7 6,855.5
Notched collar	2 3/8		J-55	1	0.45	6,957.2 6,855.9
Other In Hole						
Run Date	Des			OD (in)	Top (ftKB)	Btm (ftKB)
Proposed Other In Hole						
Des			OD (in)	Top (ftKB)	Btm (ftKB)	
Cast Iron Bridge Plug			3.99	6,636.0	6,641.0	
Logs						
Date	Type				Top, MD (ftKB)	Btm, MD (ftKB)
6/8/2011	CBL/CCL/GR				830.0	7,092.0
6/27/2011	COMPENSATED DENSITY				2,640.0	7,155.0
6/27/2011	HIGH RESOLUTION INDUCTION				16.0	7,175.0

Well Name: HOWARD A27-17D

DEVIATED - ORIGINAL HOLE, 4/8/2018 3:58:38 PM



Logs						
Date	Type	Top, MD (ftKB)	Btm, MD (ftKB)			
4/25/2014	GYRO	16.0	6,850.0			
Perforation Data						
Linked Zone	Sum of Entered Shot Total	Top (ftKB)	Btm (ftKB)	Date		
NIOBRARA, ORIGINAL HOLE	24	6,691.00	6,703.00	7/29/2011		
NIOBRARA, ORIGINAL HOLE	24	6,812.00	6,824.00	7/29/2011		
CODELL, ORIGINAL HOLE	48	6,982.00	6,994.00	7/19/2011		
Total (Sum)	96					
Job Supply Amounts						
Supply Item Des	Type	Uni...	Job Category	Total ...	Total ...	Total ...