

# HALLIBURTON

iCem<sup>®</sup> Service

## **TEP ROCKY MOUNTAIN LLC**

**For: Terra**

Date: Tuesday, November 28, 2017

**SR 433-12 Surface**

API #05-045-23456-00

Sincerely,

**Grand Junction Cement Engineering**

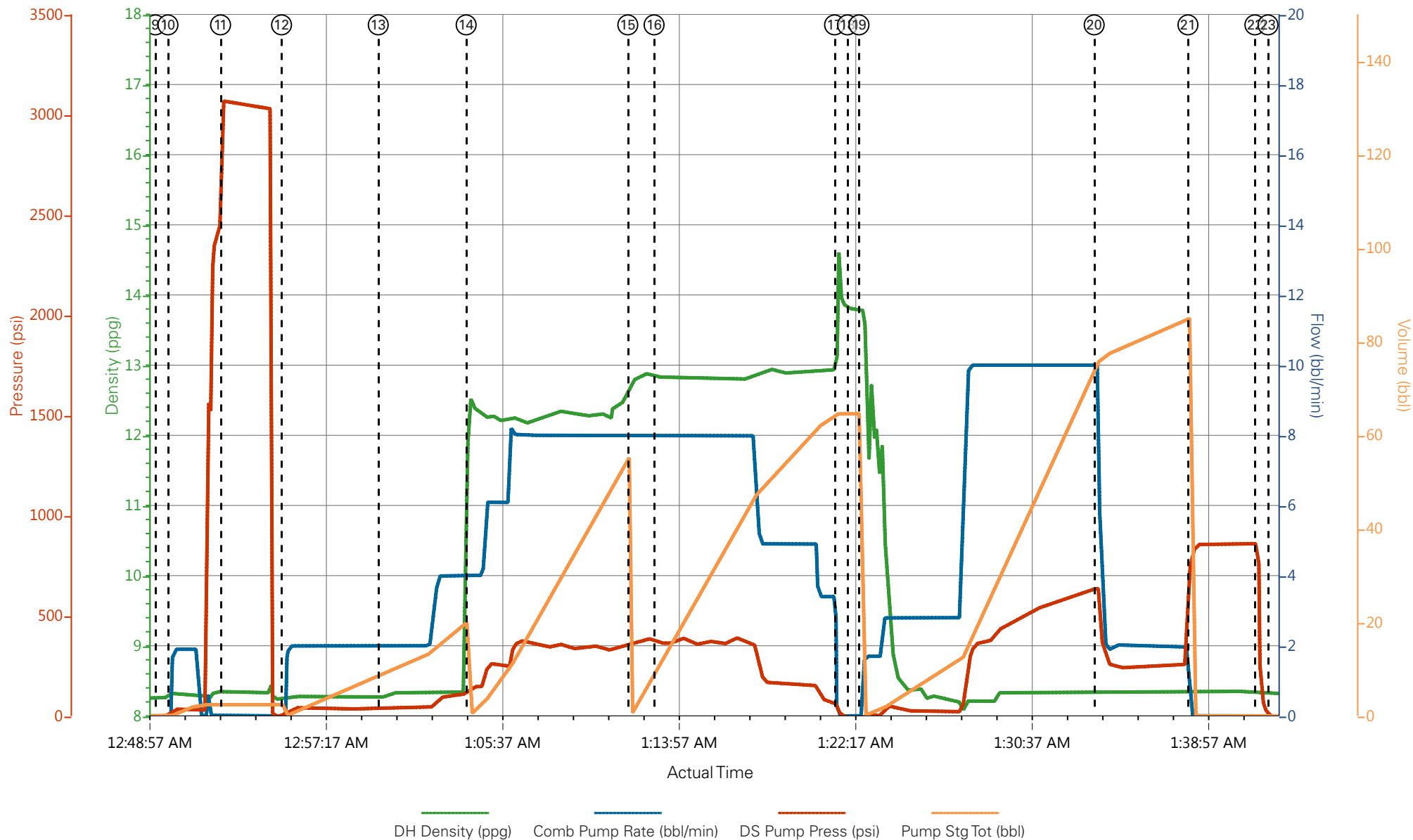
## 1.0 Real-Time Job Summary

## 1.1 Job Event Log

Type	Seq. No.	Graph Label	Date	Time	Source	DH Density (ppg)	Comb Pump Rate (bbl/min)	DS Pump Press (psi)	Pump Stg Tot (bbl)	Comments
Event	1	Call Out	11/27/2017	15:00:00	USER					REQUESTED ON LOCATION @ 21:00
Event	2	Pre-Convoy Safety Meeting	11/27/2017	17:45:00	USER					ALL HES PRESENT
Event	3	Crew Leave Yard	11/27/2017	18:00:00	USER					1 HT 400 PUMP TRUCK E1, 1 660 BULK TRUCK, 1 550 SERVICE PICKUP
Event	4	Arrive At Loc	11/27/2017	20:00:00	USER					HES ARRIVED 1 HOUR EARLY TO LOCATION. RIG PULLING DRILL PIPE
Event	5	Assessment Of Location Safety Meeting	11/27/2017	20:15:00	USER					MET WITH COMP REP, AND WENT OVER NUMBERS AND JOB PROCEDURE. WALKED AROUND LOCATION AND COLLECTED WATER SAMPLE (PH- 8, CHLORIDES- 0, TEMP- 55F). COMP REP WAS OFFERED SDS FOR ALL CHEMICLES USED BY HES.
Event	6	Spot Equipment	11/27/2017	20:30:00	USER					1 HT 400 PUMP TRUCK E1, 1 660 BULK TRUCK, 1 550 SERVICE PICKUP
Event	7	Pre-Rig Up Safety Meeting	11/27/2017	21:00:00	USER					ALL HES PRESENT
Event	8	Pre-Job Safety Meeting	11/28/2017	00:00:00	USER					ALL HES EMPLOYEES AND RIG CREW PRESENT, RIG CIRCULATED @ 12 BPM WITH 380 PSI
Event	9	Start Job	11/28/2017	00:49:23	USER					TP 1118.43', CSG 9 5/8" 32.3# H-40, SJ 41.1', FC 1080.43', OH 13 1/2", MUD 9.2 PPG
Event	10	Prime Lines	11/28/2017	00:49:58	USER	8.33	2.0	100	3	FRESH WATER
Event	11	Test Lines	11/28/2017	00:52:27	COM5			3380		PRESSURE HELD
Event	12	Pump H2O Spacer	11/28/2017	00:55:20	COM5	8.33	4.0	108	20	FRESH WATER
Event	13	Check weight	11/28/2017	00:59:54	COM5					WEIGHT VERIFIED VIA PRISSEIREIZED MUD SCALES

Event	14	Pump Lead Cement	11/28/2017	01:04:03	COM5	12.3	8.0	360	53	125 SKS VARICEM CMT 12.3 PPG, 2.38 FT3/SK, 13.77 GAL/SK
Event	15	Pump Tail Cement	11/28/2017	01:11:41	COM5	12.8	8.0	380	65.8	175 SKS VARICEM CMT 12.8 PPG, 2.11 FT3/SK, 11.78 GAL/SK
Event	16	Check weight	11/28/2017	01:12:56	COM5					WEIGHT VERIFIED VIA PRISSEIZED MUD SCALES
Event	17	Shutdown	11/28/2017	01:21:27	USER					END OF CEMENT. WASH UP ON TOP OF PLUG
Event	18	Drop Top Plug	11/28/2017	01:22:04	USER					VERIFIED BY FLAG INDICATOR
Event	19	Pump Displacement	11/28/2017	01:22:36	COM5	8.33	10.0	640	75	FRESH WATER
Event	20	Slow Rate	11/28/2017	01:33:43	USER	8.33	2.0	250	10	SLOWED TO BUMP PLUG
Event	21	Bump Plug	11/28/2017	01:38:08	COM5	8.33	2.0	250	75	PLUG BUMPED
Event	22	Check Floats	11/28/2017	01:41:18	USER			860		FLOATS HELD .5 BBL FLOW BACK TO TRUCK
Event	23	End Job	11/28/2017	01:41:55	USER					GOOD RETURNS THROUGHOUT. 25 BBLS CEMENT TO SURFACE USED 20 LBS SUGAR
Event	24	Post-Job Safety Meeting (Pre Rig-Down)	11/28/2017	01:50:00	USER					ALL HES PRESENT
Event	25	Pre-Convoy Safety Meeting	11/28/2017	02:45:00	USER					ALL HES PRESENT
Event	26	Crew Leave Location	11/28/2017	03:00:00	USER					THANK YOU FOR CHOOSING HALLIBURTON CEMENT, DUSTIN HYDE AND CREW

# TERRA - SR 433-12 - 9 5/8" SURFACE



- |   |                             |                    |                     |   |                        |
|---|-----------------------------|--------------------|---------------------|---|------------------------|
| ① Call Out                              | ⑥ Spot Equipment            | ⑪ Test Lines       | ⑯ Check weight      | 21 Bump Plug                              | 26 Crew Leave Location |
| ② Pre-Convoy Safety Meeting             | ⑦ Pre-Rig Up Safety Meeting | ⑫ Pump H2O Spacer  | ⑰ Shutdown          | 22 Check Floats                           |                        |
| ③ Crew Leave Yard                       | ⑧ Pre-Job Safety Meeting    | ⑬ Check weight     | ⑱ Drop Top Plug     | 23 End Job                                |                        |
| ④ Arrive At Loc                         | ⑨ Start Job                 | ⑭ Pump Lead Cement | ⑲ Pump Displacement | 24 Post-Job Safety Meeting (Pre Rig-Down) |                        |
| ⑤ Assessment Of Location Safety Meeting | ⑩ Prime Lines               | ⑮ Pump Tail Cement | 20 Slow Rate        | 25 Pre-Convoy Safety Meeting              |                        |

▼ **HALLIBURTON** | iCem® Service

Created: 2017-11-27 21:11:36, Version: 4.2.393

Edit

Customer: TEP ROCKY MOUNTAIN LLC

Job Date: 11/27/2017

Well: SR 433-12

Representative: JOSH PHILLIPS

Sales Order #: 904461731

ELITE 1: HYDE / ANGELO

# TERRA - SR 433-12 - 9 5/8" SURFACE

