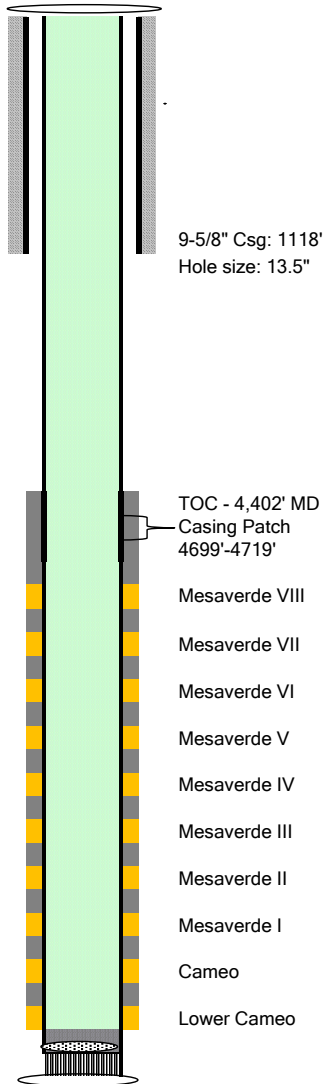


# Exploration and Production



Well Name **SR 433-12**  
 Location **Lat: 39.441131; Long: -107.836646**  
 Field **Rulison**  
 County **Garfield, CO**  
 API **05-045-23456**  
 KB **24**  
 Elev **7479**

## Spud

Conductor **80'**  
 Casing **1,118'** **9-5/8" 32.3#**  
 Cement **300 sx** **Class G**  
 Casing **9,586'** **4-1/2" 11.6# P-110**  
 Cement **1075 sx** **Class G**

Tubing **N/A**

## Formation Tops

Mesaverde **5,841**  
 Cameo **8,738**

## TOC - 4,402' MD

## Balanced Plug/Cement Squeeze

Approx. 50 sks for 15.8ppg Class G Neat  
 1.148 Cuft/sack yield