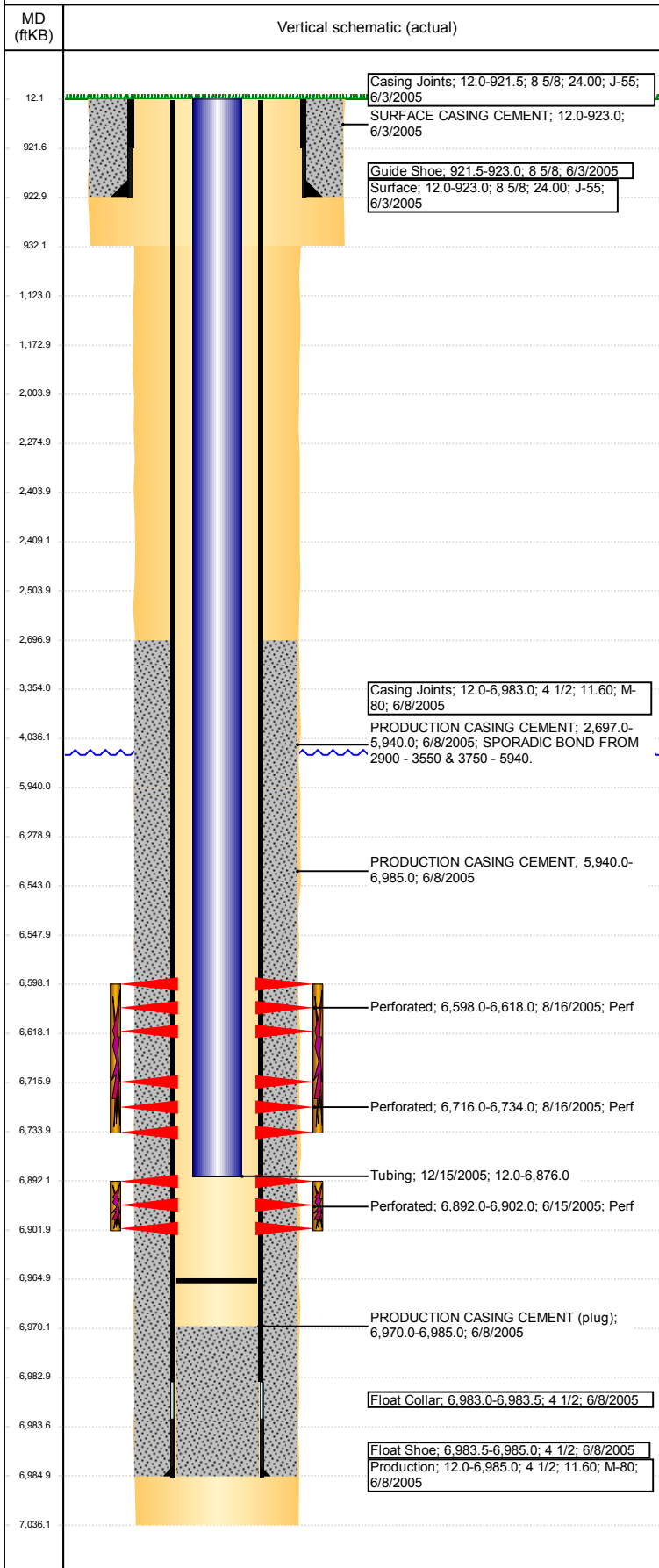


Well Name: HOWARD A27-01

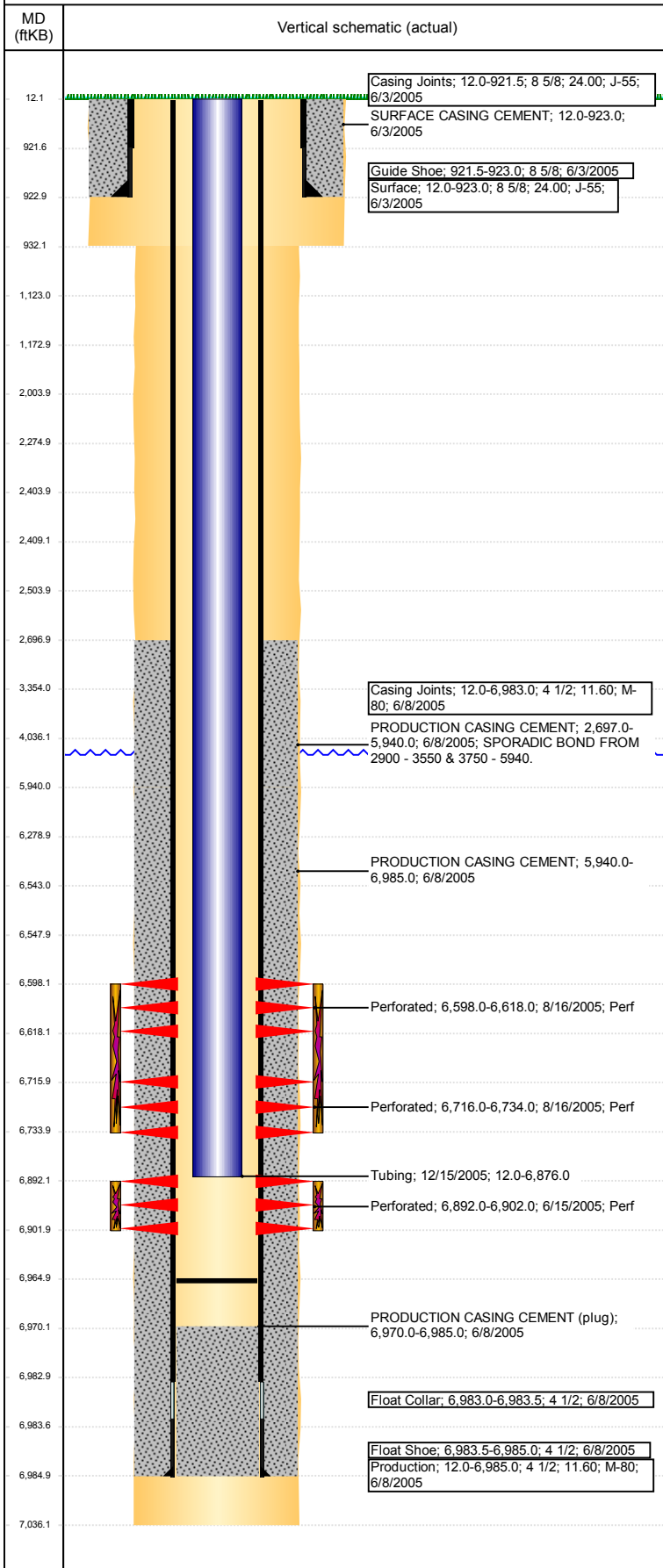
VERTICAL - ORIGINAL HOLE, 4/8/2018 3:20:04 PM



Well Header						
API 05-123-22848		Well Report Center 422131035		Well Configuration Type VERTICAL		
Original KB Elevation (ft) 4,702		KB - GL / MSL (ftKB) 12.00		Spud Date 6/2/2005		P & A Date
Production Route Watt - B3-06			Well Production Status PR			SoRT Ignore No
Directions To Well RD 57 & 66, 1/4 SOUTH AND WEST INTO				Actual Latitude (°) 40.46270749		Actual Longitude (°) -104.52914989
Comment PUSH CBP 6965 12/05.						
PROD CSG DEPTH DISCREPANCY: DRL RPT = 7027', ST CMP & CSG TALLY = 6985'						
Congressional Location						
Quarter 3 NE	Quarter 4 NE	Section 27	Township 6	Twntshp N/S Dir N	Range 64	Range E/W Dir W
Rig Operator						
Rig Operator						
Plug Back Total Depths						
Date	Depth (ftKB)	Method		Com		
12/14/2005	6,965.0	TAG		CLEAN OUT		
Wellbore Sections						
Section Des		Size (in)		Act Top, MD (ftKB)		Act Btm, MD (ftKB)
SURFACE		12 1/4		12		932
PRODUCTION		7 7/8		932		7,036
Zone Statuses						
Zone Name		Status Date			Status	
NIOBRARA		2/8/2010			PR	
CODELL		4/28/2017			PR	
Casing Strings						
Surface, 923.0ftKB						
Casing Description Surface	Run Date 6/3/2005	OD (in) 8 5/8	Wt/Len (l...) 24.00	Grade J-55	Top, MD (ft...) 12.0	MD (ftKB) 923.0
Production, 6,985.0ftKB						
Casing Description Production	Run Date 6/8/2005	OD (in) 4 1/2	Wt/Len (l...) 11.60	Grade M-80	Top, MD (ft...) 12.0	MD (ftKB) 6,985.0
Cement						
Des		Start Date		Top (ftKB)		Btm (ftKB)
SURFACE CASING CEMENT		6/3/2005		12.0		923.0
PRODUCTION CASING CEMENT		6/8/2005		2,697.0		5,940.0
PRODUCTION CASING CEMENT		6/8/2005		5,940.0		6,985.0
Proposed Cement						
Des				Top (ftKB)		Btm (ftKB)
Balance Plug				6,279.0		6,543.0
Balance Plug				3,354.0		4,036.0
Cement Squeeze				2,004.0		2,504.0
Cement Squeeze				2,275.0		2,404.0
Cement Squeeze				2,409.0		2,504.0
Shoe Plug				12.0		1,123.0
Shoe Plug				1,123.0		1,173.0
Tubing Strings						
Tubing Description Tubing	Run Date 12/15/2005	String... 2 3/8	ID (in) 2.00	Wt (lb/ft) 4.70	Grade J-55	Len (ft) 6,864.00
Set De...						
Tubing Components						
Item Des		OD (in)	Wt (lb/ft)	Grade	Jts	Len (ft)
EUE 8rd Tubing		2 3/8	4.70	J-55	219	6,862.35
Seating Nipple		2 3/8	1.10			0.50
Notched collar		2 3/8				1.15
Btm (ftKB)						
Btm (TVD) (ftKB)						
6,874.4						
6,874.9						
6,876.0						
Other In Hole						
Run Date		Des			OD (in)	Top (ftKB)
12/15/2005		Cast Iron Bridge Plug				6,965.0
Btm (ftKB)						
6,967.0						
Proposed Other In Hole						
Des				OD (in)	Top (ftKB)	Btm (ftKB)
Cement Retainer				3.99	2,404.0	2,409.0
Cast Iron Bridge Plug				3.99	6,543.0	6,548.0

Well Name: HOWARD A27-01

VERTICAL - ORIGINAL HOLE, 4/8/2018 3:20:04 PM



Logs			
Date	Type	Top, MD (ftKB)	Btm, MD (ftKB)
6/8/2005	COMPENSATED DENSITY	3,500.0	7,011.0
6/8/2005	INDUCTION	923.0	7,031.0
6/14/2005	CEMENT BOND	2,500.0	6,945.0
7/14/2014	GYRO	10.0	6,750.0

Perforation Data				
Linked Zone	Sum of Entered Shot Total	Top (ftKB)	Btm (ftKB)	Date
NIOBRARA, ORIGINAL HOLE	120	6,598.00	6,618.00	8/16/2005
NIOBRARA, ORIGINAL HOLE	108	6,716.00	6,734.00	8/16/2005
CODELL, ORIGINAL HOLE	40	6,892.00	6,902.00	6/15/2005
Total (Sum)	268			

Proposed Perforations				
Linked Zone	Sum of En...	Top Depth (ftKB)	Btm (ftKB)	Date
	0	2,504.00	2,504.00	3/13/2018
Total (Sum)	0			

Job Supply Amounts						
Supply Item Des	Type	Uni...	Job Category	Total ...	Total ...	Total ...