

# Interim Reclamation and Stormwater Inspection

April 5, 2018

Operator: CUB CREEK ENERGY- #10542

Location ID: 446104

Inspection Document #: 682403446

Weld County, CO

NWSE Section 32 T4N R68W

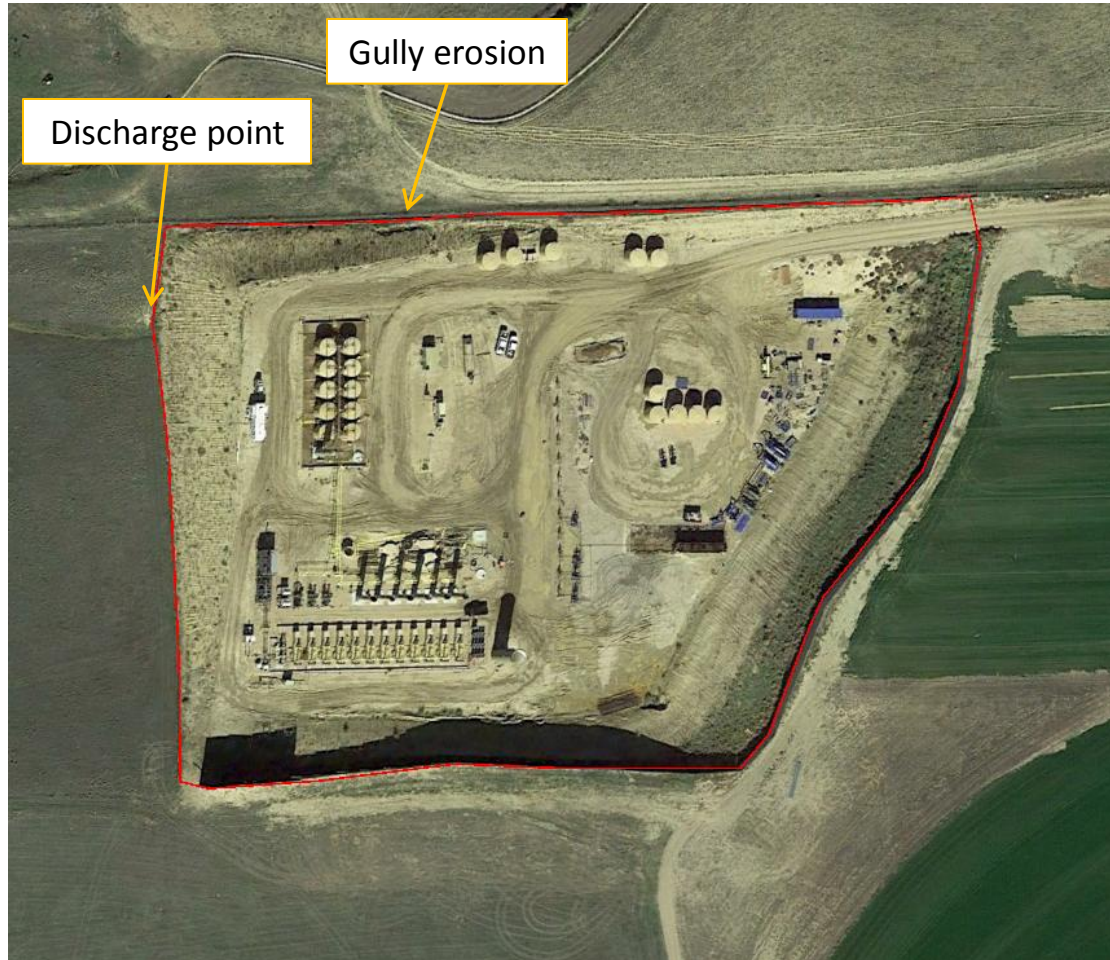
Chris Binschus  
Reclamation Specialist, COGCC



**COLORADO**  
Oil & Gas Conservation  
Commission

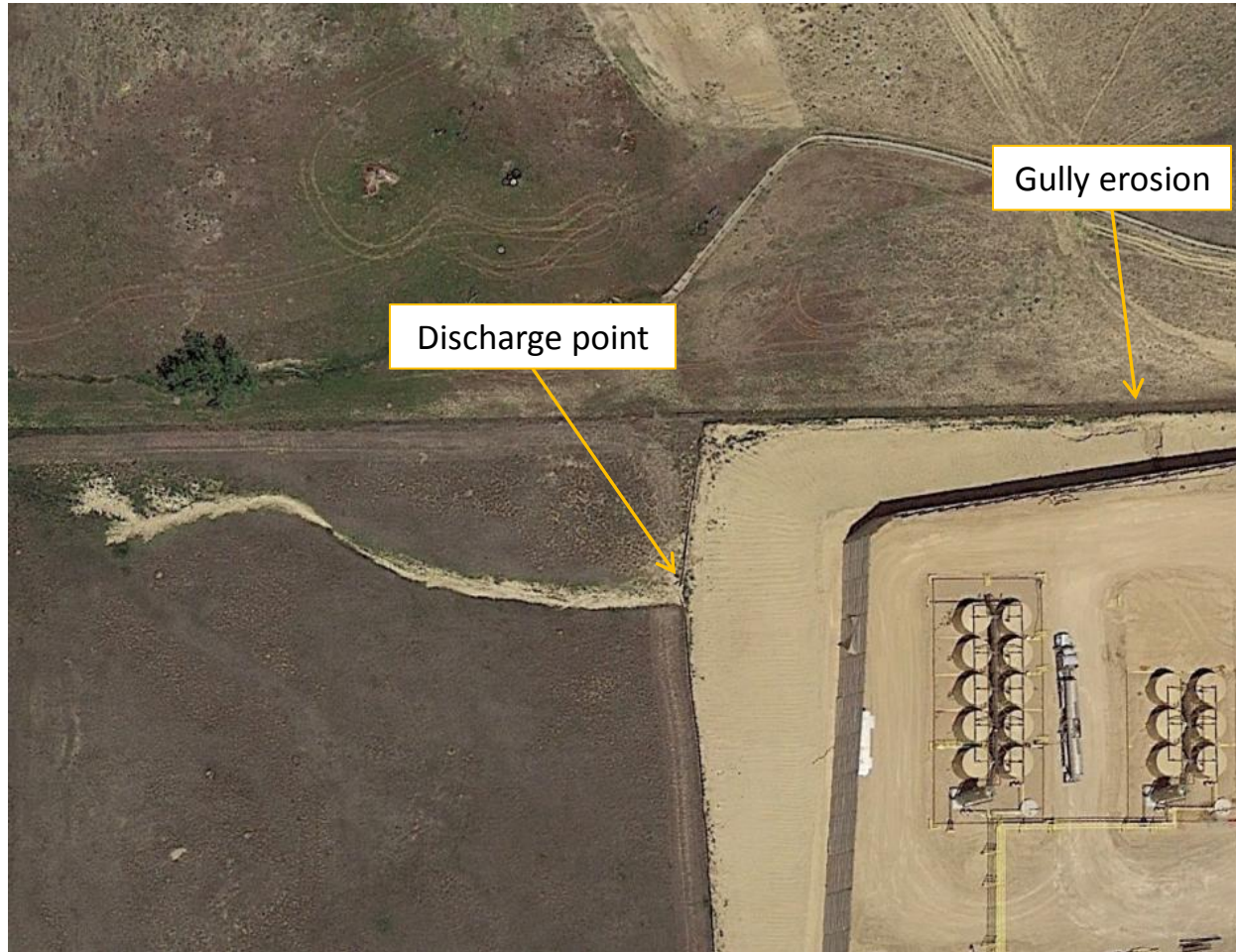
Department of Natural Resources

Inspection Photos  
Location Name: MARKHAM /PAD  
Location ID: 446104



Google Earth aerial imagery taken October 14, 2017, illustrating the total disturbance of approximately 6.7 acres (red line). This location is not in compliance with the approved Form 2A for the permitted disturbance area of 5.0 acres. This location is not in compliance with Rule 1002.f.(2); Operator failed to control stormwater runoff in a manner that minimizes erosion, transport of sediment offsite, and site degradation.

Inspection Photos  
Location Name: MARKHAM /PAD  
Location ID: 446104



Google Earth aerial imagery taken June 9, 2017, illustrating active gully erosion discharging off location.



Inspection Photos  
Location Name: MARKHAM /PAD  
Location ID: 446104



Photo reference points to help illustrate approximate locations of the subject photo during the April 5, 2018 inspection.

Inspection Photos  
Location Name: MARKHAM /PAD  
Location ID: 446104



**Photo 1.** Photo taken from the entrance of the location, facing South. Appears topsoil was salvaged and stored along the eastern perimeter of the location. Note: Kochia weeds (*Kochia scoparia*) and weed debris were observed along portions of the location and was not managed and controlled. Kochia established on the fill slopes and topsoil stockpile.



**Photo 2.** Photo taken from the entrance of the location, facing Southwest. Photo illustrates the Operator has failed to conduct interim reclamation on areas not needed for production operations. There a



Inspection Photos  
Location Name: MARKHAM /PAD  
Location ID: 446104



**Photo 3.** Photo taken from the entrance of the location, facing West. Operator has failed to maintain stormwater BMPs. Silt fence BMP in disrepair throughout the entire location. Also, there appeared to be other equipment stored along the eastern well pad location. Operator shall remove this equipment if it is not being used for production operations.



Inspection Photos  
Location Name: MARKHAM /PAD  
Location ID: 446104



**Photo 4.** Photo taken from the northern location, facing South. Gully erosion up to three feet deep along the northern fill slopes. Sediment discharge off location was observed along the northwestern location- see Photo 7.



Inspection Photos  
Location Name: MARKHAM /PAD  
Location ID: 446104



**Photo 5.** Photo taken from the gully erosion, facing West. See comments under Photo 4.



**Photo 6.** Photo taken from the northwestern location, facing South. See comments under Photo 3.





**Photo 7.** Photo taken from the discharge point along the northwestern location, facing South. Sediment discharge from gully erosion damaged the silt fence and discharged off location.



Inspection Photos  
Location Name: MARKHAM /PAD  
Location ID: 446104



**Photo 8.** Photo taken from the southwest location, facing East. See comments under Photo 3.



**Photo 9.** Photo taken from the southwest location, facing North. Remove unused equipment per Rule 603.f.



Inspection Photos  
Location Name: MARKHAM /PAD  
Location ID: 446104



**Photo 10.** Photo taken from the southeastern location, facing East. Photo illustrates Kochia establishment and weed debris.



**Photo 11.** Photo taken from the southeastern location, facing East. See comments under Photo 10.



**Photo 12.** Photo taken from the northeastern location along the topsoil stockpile, facing North. Operator has failed to prevent weed establishment on the topsoil stockpile per Rule 1002.c. Photo illustrates cheatgrass and Kochia establishment throughout the entire topsoil stockpile.



Inspection Photos  
Location Name: MARKHAM /PAD  
Location ID: 446104



**Photo 13.** Photo taken from the eastern location along the topsoil stockpile, facing North.  
See comments under Photo 12.