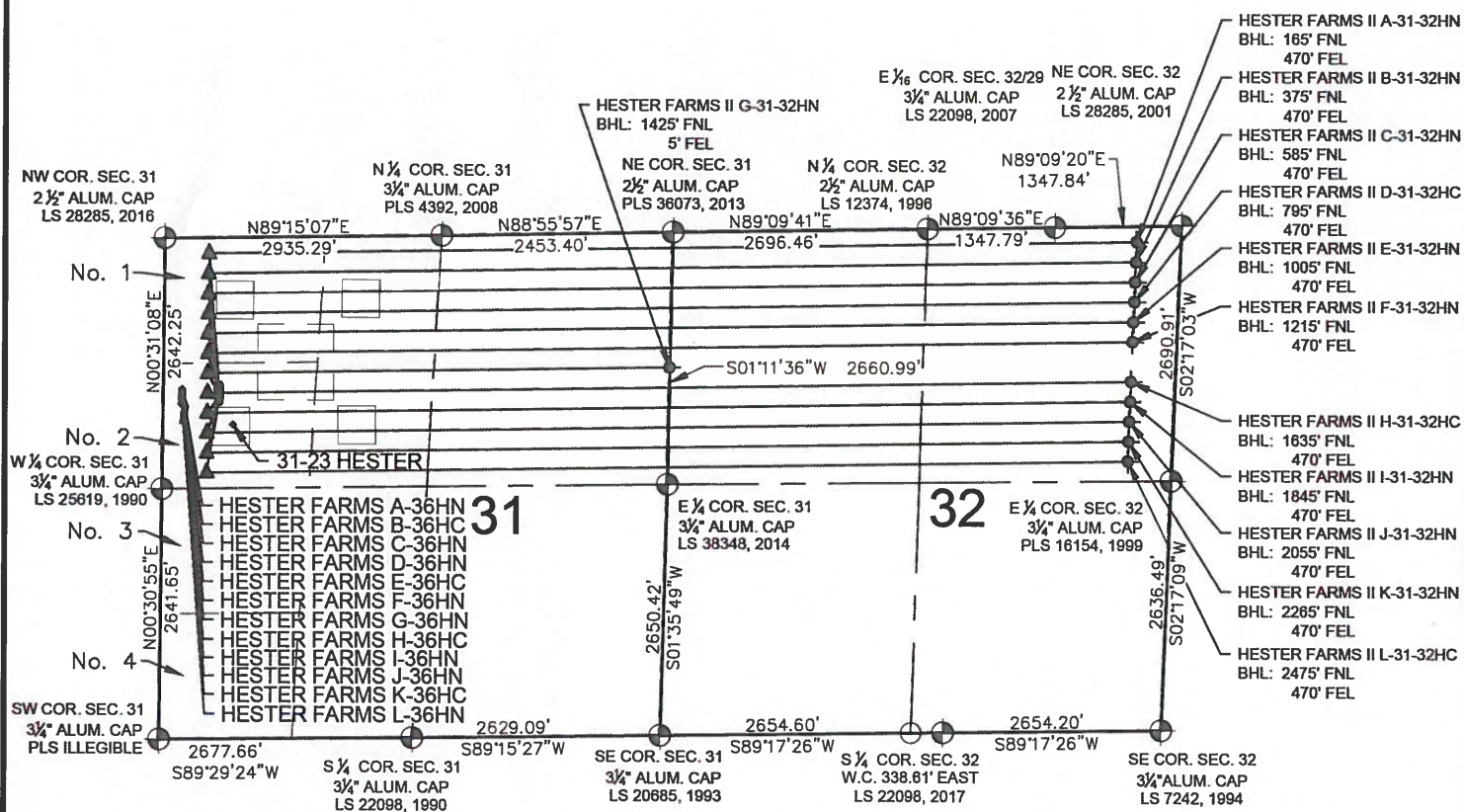


HESTER FARMS II 31-H PAD MULTI-WELL PLAN



NOTES:

- HESTER FARMS II A-31-32HN TO BE AT 1557' FNL & 591' FWL.
BOTTOM HOLE AT 165' FNL & 470' FEL, SEC. 32.
- HESTER FARMS II B-31-32HN TO BE AT 1572' FNL & 591' FWL.
BOTTOM HOLE AT 375' FNL & 470' FEL, SEC. 32.
- HESTER FARMS II C-31-32HN TO BE AT 1587' FNL & 591' FWL.
BOTTOM HOLE AT 585' FNL & 470' FEL, SEC. 32.
- HESTER FARMS II D-31-32HC TO BE AT 1602' FNL & 591' FWL.
BOTTOM HOLE AT 795' FNL & 470' FEL, SEC. 32.
- HESTER FARMS II E-31-32HN TO BE AT 1617' FNL & 591' FWL.
BOTTOM HOLE AT 1005' FNL & 470' FEL, SEC. 32.
- HESTER FARMS II F-31-32HN TO BE AT 1632' FNL & 591' FWL.
BOTTOM HOLE AT 1215' FNL & 470' FEL, SEC. 32.
- HESTER FARMS II G-31-32HN TO BE AT 1647' FNL & 591' FWL.
BOTTOM HOLE AT 1425' FNL & 5' FEL, SEC. 31.
- HESTER FARMS II H-31-32HC TO BE AT 1662' FNL & 591' FWL.
BOTTOM HOLE AT 1635' FNL & 470' FEL, SEC. 32.
- HESTER FARMS II I-31-32HN TO BE AT 1677' FNL & 591' FWL.
BOTTOM HOLE AT 1845' FNL & 470' FEL, SEC. 32.
- HESTER FARMS II J-31-32HN TO BE AT 1692' FNL & 591' FWL.
BOTTOM HOLE AT 2055' FNL & 470' FEL, SEC. 32.
- HESTER FARMS II K-31-32HN TO BE AT 1707' FNL & 591' FWL.
BOTTOM HOLE AT 2265' FNL & 470' FEL, SEC. 32.
- HESTER FARMS II L-31-32HC TO BE AT 1722' FNL & 591' FWL.
BOTTOM HOLE AT 2475' FNL & 470' FEL, SEC. 32.

LEGEND

- = EXISTING MONUMENT
- = CALCULATED POSITION
- = PROPOSED WELL
- ◆ = EXISTING WELL
- ◆ = BOTTOM HOLE
- ▲ = LANDING POINT
- BHL = BOTTOM HOLE LOCATION

NOTES:

- THIS FIELD SURVEY CONFORMS TO THE MINIMUM STANDARDS SET BY THE C.O.G.C.C., RULE NO. 215
- ALL DISTANCES AND BEARINGS SHOWN HEREON ARE GROUND VALUES AS GPS MEASURED IN THE FIELD, WITH TIES TO WELLS MEASURED PERPENDICULAR TO SECTION LINES. THIS LOW DISTORTION PROJECTION (LDP) IS BASED ON THE NORTH AMERICAN DATUM OF 1983, U.S. SURVEY FOOT WITH A LATITUDE ORIGIN OF 40.587905°N, A CENTRAL MERIDIAN LONGITUDE OF 104.773474°W, AND A SCALE FACTOR ON THE CENTRAL MERIDIAN OF 1.000235 (EXACT). THE LDP BASIS OF BEARINGS IS GEODETIC NORTH.
- FIELD VERIFICATION OF MONUMENTS COMPLETED WITHIN 1 YEAR OF FIELD DATE.



FIELD DATE:
6-1-17

DRAWING DATE:
12-05-17

BY:
FWM

CHECKED:
IJM

SITE NAME:
HESTER FARMS II 31-H PAD

SURFACE LOCATION:
LOT 2 NW 1/4 SEC. 31, T7N, R66W, 6TH P.M.
WELD COUNTY, COLORADO

PREPARED FOR:

