

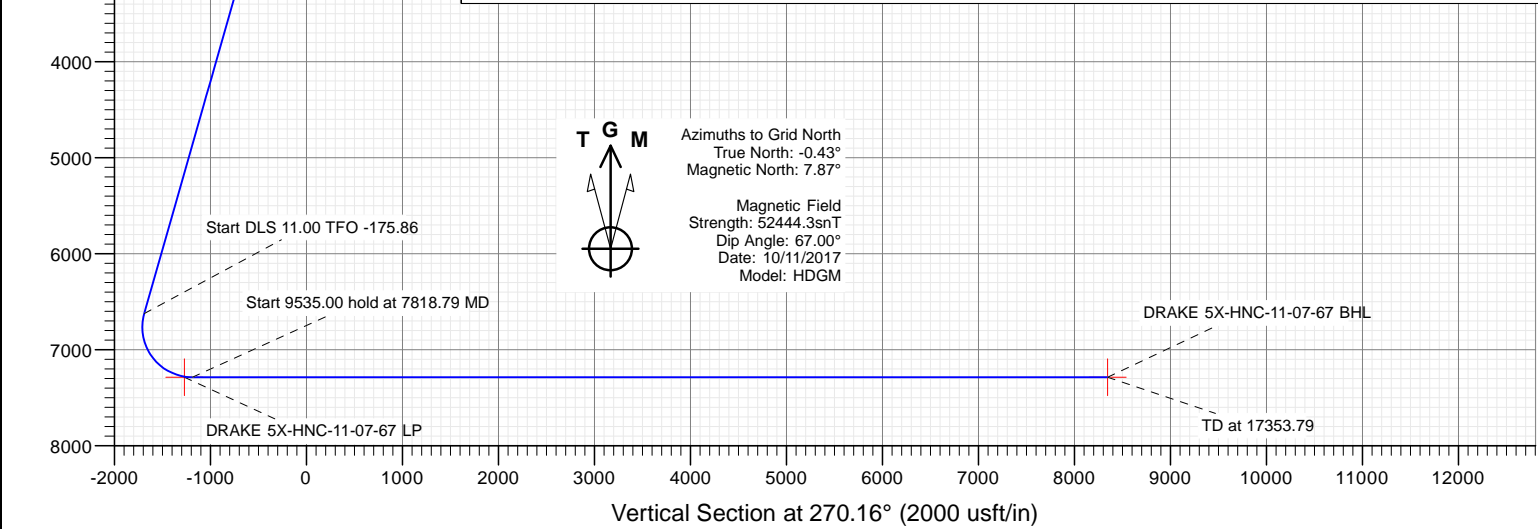
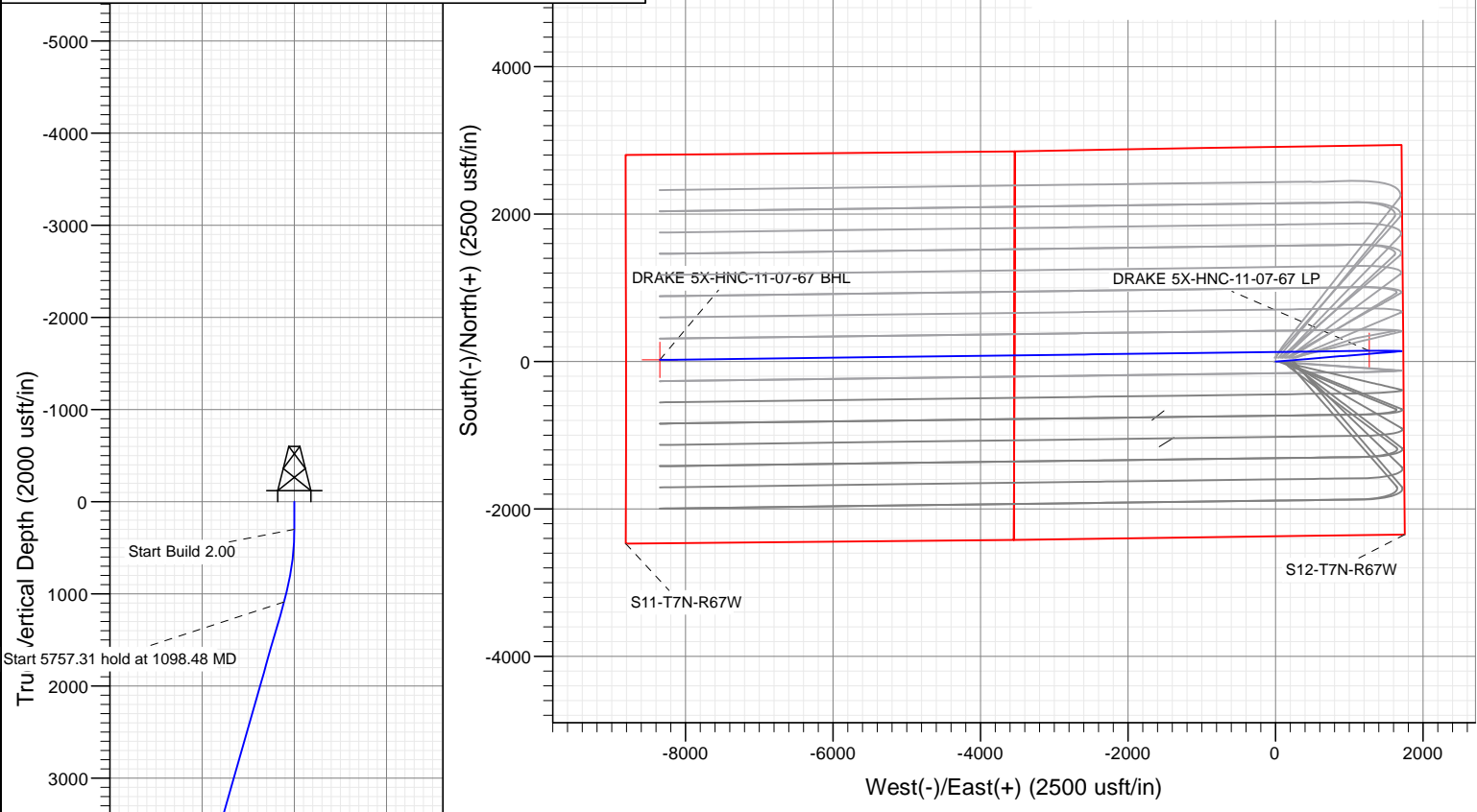
Nickel Road Operating LLC


SECTION DETAILS

Sec	MD	Inc	Azi	TVD	+N/-S	+E/-W	Dleg	TFace	VSec	Target
1	0.00	0.00	0.00	0.00	0.00	0.00	0.00	0.00	0.00	
2	300.00	0.00	0.00	300.00	0.00	0.00	0.00	0.00	0.00	
3	1098.48	15.97	85.28	1088.18	9.10	110.18	2.00	85.28	-110.16	
4	6855.79	15.97	85.28	6623.30	139.46	1688.80	0.00	0.00	-1688.41	
5	7818.79	90.00	269.26	7287.00	146.16	1187.81	11.00	-175.86	-1187.40	
6	17353.79	90.00	269.26	7287.00	22.91	-8346.40	0.00	0.00	8346.43	DRAKE 5X-HNC-11-07-67 BHL

PLAN #1 DRAKE 5X-HNC-11-07-67 20' KB @ 5200.00usft Ground Level @ 5200.00 North American Datum 1983 Well DRAKE 5X-HNC-11-07-67, Grid North									
Type	Target	Azimuth	Origin	Type	N/S	E/W	From	TVD	
TD	No Target (Freehand)	270.16	Slot		0.00	0.00	0.00	0.00	
Name		TVD	+N/-S	+E/-W	Latitude	Longitude			
DRAKE 5X-HNC-11-07-67 BHL		7287.00	22.91	-8346.40	40.588258	-104.838100			
DRAKE 5X-HNC-11-07-67 LP		7287.00	147.25	-1272.08	40.588416	-104.833466			


Project: WELD COUNTY, CO  
Site: S12-T7N-R67W  
Well: DRAKE 5X-HNC-11-07-67  
Wellbore: OH  
Design: PLAN #1





WELL DETAILS: DRAKE 5X-HNC-11-07-67

+N/-S	+E/-W	Northing	Easting	5200.00	Latitude	Longitude
0.00	0.00	1457749.78	3183646.85		40.588038	-104.838050



# Cathedral Energy Services

## Planning Report

<b>Database:</b>	USA EDM 5000 Multi Users DB	<b>Local Co-ordinate Reference:</b>	Well DRAKE 5X-HNC-11-07-67
<b>Company:</b>	Nickel Road Operating LLC	<b>TVD Reference:</b>	20' KB @ 5220.00usft
<b>Project:</b>	WELD COUNTY, CO	<b>MD Reference:</b>	20' KB @ 5220.00usft
<b>Site:</b>	S12-T7N-R67W	<b>North Reference:</b>	Grid
<b>Well:</b>	DRAKE 5X-HNC-11-07-67	<b>Survey Calculation Method:</b>	Minimum Curvature
<b>Wellbore:</b>	OH		
<b>Design:</b>	PLAN #1		

<b>Project</b>	WELD COUNTY, CO		
<b>Map System:</b>	US State Plane 1983	<b>System Datum:</b>	Mean Sea Level
<b>Geo Datum:</b>	North American Datum 1983		
<b>Map Zone:</b>	Colorado Northern Zone		

Site		S12-T7N-R67W			
Site Position:		Northing:	1,457,799.97 usft	Latitude:	40.588176
From:	Lat/Long	Easting:	3,183,834.54 usft	Longitude:	-104.838093
Position Uncertainty:	0.00 usft	Slot Radius:	13-3/16 "	Grid Convergence:	0.43 °

Well	DRAKE 5X-HNC-11-07-67					
Well Position	+N/-S	0.00 usft	Northing:	1,457,749.78 usft	Latitude:	40.588038
	+E/-W	0.00 usft	Easting:	3,183,846.85 usft	Longitude:	-104.838050
Position Uncertainty		0.00 usft	Wellhead Elevation:	usft	Ground Level:	5,200.00 usft

<b>Wellbore</b>	OH				
<b>Magnetics</b>	<b>Model Name</b>	<b>Sample Date</b>	<b>Declination (°)</b>	<b>Dip Angle (°)</b>	<b>Field Strength (nT)</b>
	HDGM	10/11/2017	8.30	67.00	52,444.30000000

<b>Design</b>	PLAN #1				
<b>Audit Notes:</b>					
<b>Version:</b>	<b>Phase:</b>	PLAN	<b>Tie On Depth:</b>	0.00	
<b>Vertical Section:</b>	<b>Depth From (TVD) (usft)</b>	<b>+N/-S (usft)</b>	<b>+E/-W (usft)</b>	<b>Direction (°)</b>	
	0.00	0.00	0.00	270.16	

<b>Plan Sections</b>										
Measured Depth (usft)	Inclination (°)	Azimuth (°)	Vertical Depth (usft)	+N/-S (usft)	+E/-W (usft)	Dogleg Rate (°/100usft)	Build Rate (°/100usft)	Turn Rate (°/100usft)	TFO (°)	Target
0.00	0.00	0.00	0.00	0.00	0.00	0.00	0.00	0.00	0.00	
300.00	0.00	0.00	300.00	0.00	0.00	0.00	0.00	0.00	0.00	
1,098.48	15.97	85.28	1,088.18	9.10	110.18	2.00	2.00	0.00	85.28	
6,855.79	15.97	85.28	6,623.30	139.46	1,688.80	0.00	0.00	0.00	0.00	
7,818.79	90.00	269.26	7,287.00	146.16	1,187.81	11.00	7.69	-18.28	-175.86	
17,353.79	90.00	269.26	7,287.00	22.91	-8,346.40	0.00	0.00	0.00	0.00	DRAKE 5X-HNC-11-0

# Cathedral Energy Services

## Planning Report

<b>Database:</b>	USA EDM 5000 Multi Users DB	<b>Local Co-ordinate Reference:</b>	Well DRAKE 5X-HNC-11-07-67
<b>Company:</b>	Nickel Road Operating LLC	<b>TVD Reference:</b>	20' KB @ 5220.00usft
<b>Project:</b>	WELD COUNTY, CO	<b>MD Reference:</b>	20' KB @ 5220.00usft
<b>Site:</b>	S12-T7N-R67W	<b>North Reference:</b>	Grid
<b>Well:</b>	DRAKE 5X-HNC-11-07-67	<b>Survey Calculation Method:</b>	Minimum Curvature
<b>Wellbore:</b>	OH		
<b>Design:</b>	PLAN #1		

Planned Survey									
Measured Depth (usft)	Inclination (°)	Azimuth (°)	Vertical Depth (usft)	+N/-S (usft)	+E/-W (usft)	Vertical Section (usft)	Dogleg Rate (°/100usft)	Build Rate (°/100u)	Comments / Formations
0.00	0.00	0.00	0.00	0.00	0.00	0.00	0.00	0.00	
100.00	0.00	0.00	100.00	0.00	0.00	0.00	0.00	0.00	
200.00	0.00	0.00	200.00	0.00	0.00	0.00	0.00	0.00	
300.00	0.00	0.00	300.00	0.00	0.00	0.00	0.00	0.00	
400.00	2.00	85.28	399.98	0.14	1.74	-1.74	2.00	2.00	
500.00	4.00	85.28	499.84	0.57	6.95	-6.95	2.00	2.00	
600.00	6.00	85.28	599.45	1.29	15.64	-15.64	2.00	2.00	
700.00	8.00	85.28	698.70	2.29	27.79	-27.78	2.00	2.00	
800.00	10.00	85.28	797.47	3.58	43.37	-43.36	2.00	2.00	
900.00	12.00	85.28	895.62	5.15	62.39	-62.38	2.00	2.00	
1,000.00	14.00	85.28	993.06	7.00	84.81	-84.79	2.00	2.00	
1,098.48	15.97	85.28	1,088.18	9.10	110.18	-110.16	2.00	2.00	
1,100.00	15.97	85.28	1,089.64	9.13	110.60	-110.57	0.00	0.00	
1,200.00	15.97	85.28	1,185.78	11.40	138.02	-137.99	0.00	0.00	
1,300.00	15.97	85.28	1,281.92	13.66	165.44	-165.40	0.00	0.00	
1,400.00	15.97	85.28	1,378.07	15.93	192.86	-192.81	0.00	0.00	
1,500.00	15.97	85.28	1,474.21	18.19	220.28	-220.23	0.00	0.00	
1,600.00	15.97	85.28	1,570.35	20.45	247.70	-247.64	0.00	0.00	
1,700.00	15.97	85.28	1,666.49	22.72	275.12	-275.05	0.00	0.00	
1,800.00	15.97	85.28	1,762.63	24.98	302.54	-302.47	0.00	0.00	
1,900.00	15.97	85.28	1,858.77	27.25	329.96	-329.88	0.00	0.00	
2,000.00	15.97	85.28	1,954.91	29.51	357.37	-357.29	0.00	0.00	
2,100.00	15.97	85.28	2,051.05	31.77	384.79	-384.71	0.00	0.00	
2,200.00	15.97	85.28	2,147.19	34.04	412.21	-412.12	0.00	0.00	
2,300.00	15.97	85.28	2,243.33	36.30	439.63	-439.53	0.00	0.00	
2,400.00	15.97	85.28	2,339.47	38.57	467.05	-466.94	0.00	0.00	
2,500.00	15.97	85.28	2,435.61	40.83	494.47	-494.36	0.00	0.00	
2,600.00	15.97	85.28	2,531.75	43.10	521.89	-521.77	0.00	0.00	
2,700.00	15.97	85.28	2,627.90	45.36	549.31	-549.18	0.00	0.00	
2,800.00	15.97	85.28	2,724.04	47.62	576.73	-576.60	0.00	0.00	
2,900.00	15.97	85.28	2,820.18	49.89	604.15	-604.01	0.00	0.00	
3,000.00	15.97	85.28	2,916.32	52.15	631.57	-631.42	0.00	0.00	
3,100.00	15.97	85.28	3,012.46	54.42	658.99	-658.84	0.00	0.00	
3,200.00	15.97	85.28	3,108.60	56.68	686.41	-686.25	0.00	0.00	
3,300.00	15.97	85.28	3,204.74	58.95	713.83	-713.66	0.00	0.00	
3,400.00	15.97	85.28	3,300.88	61.21	741.25	-741.08	0.00	0.00	
3,500.00	15.97	85.28	3,397.02	63.47	768.67	-768.49	0.00	0.00	
3,600.00	15.97	85.28	3,493.16	65.74	796.09	-795.90	0.00	0.00	
3,700.00	15.97	85.28	3,589.30	68.00	823.51	-823.32	0.00	0.00	
3,800.00	15.97	85.28	3,685.44	70.27	850.92	-850.73	0.00	0.00	
3,900.00	15.97	85.28	3,781.58	72.53	878.34	-878.14	0.00	0.00	
4,000.00	15.97	85.28	3,877.73	74.79	905.76	-905.55	0.00	0.00	
4,100.00	15.97	85.28	3,973.87	77.06	933.18	-932.97	0.00	0.00	
4,200.00	15.97	85.28	4,070.01	79.32	960.60	-960.38	0.00	0.00	
4,300.00	15.97	85.28	4,166.15	81.59	988.02	-987.79	0.00	0.00	
4,400.00	15.97	85.28	4,262.29	83.85	1,015.44	-1,015.21	0.00	0.00	
4,500.00	15.97	85.28	4,358.43	86.12	1,042.86	-1,042.62	0.00	0.00	
4,600.00	15.97	85.28	4,454.57	88.38	1,070.28	-1,070.03	0.00	0.00	
4,700.00	15.97	85.28	4,550.71	90.64	1,097.70	-1,097.45	0.00	0.00	
4,800.00	15.97	85.28	4,646.85	92.91	1,125.12	-1,124.86	0.00	0.00	
4,900.00	15.97	85.28	4,742.99	95.17	1,152.54	-1,152.27	0.00	0.00	
5,000.00	15.97	85.28	4,839.13	97.44	1,179.96	-1,179.69	0.00	0.00	

# Cathedral Energy Services

## Planning Report

<b>Database:</b>	USA EDM 5000 Multi Users DB	<b>Local Co-ordinate Reference:</b>	Well DRAKE 5X-HNC-11-07-67
<b>Company:</b>	Nickel Road Operating LLC	<b>TVD Reference:</b>	20' KB @ 5220.00usft
<b>Project:</b>	WELD COUNTY, CO	<b>MD Reference:</b>	20' KB @ 5220.00usft
<b>Site:</b>	S12-T7N-R67W	<b>North Reference:</b>	Grid
<b>Well:</b>	DRAKE 5X-HNC-11-07-67	<b>Survey Calculation Method:</b>	Minimum Curvature
<b>Wellbore:</b>	OH		
<b>Design:</b>	PLAN #1		

### Planned Survey

Measured Depth (usft)	Inclination (°)	Azimuth (°)	Vertical Depth (usft)	+N/-S (usft)	+E/-W (usft)	Vertical Section (usft)	Dogleg Rate (°/100usft)	Build Rate (°/100u)	Comments / Formations
5,100.00	15.97	85.28	4,935.27	99.70	1,207.38	-1,207.10	0.00	0.00	
5,200.00	15.97	85.28	5,031.41	101.96	1,234.80	-1,234.51	0.00	0.00	
5,300.00	15.97	85.28	5,127.56	104.23	1,262.22	-1,261.92	0.00	0.00	
5,400.00	15.97	85.28	5,223.70	106.49	1,289.64	-1,289.34	0.00	0.00	
5,500.00	15.97	85.28	5,319.84	108.76	1,317.05	-1,316.75	0.00	0.00	
5,600.00	15.97	85.28	5,415.98	111.02	1,344.47	-1,344.16	0.00	0.00	
5,700.00	15.97	85.28	5,512.12	113.29	1,371.89	-1,371.58	0.00	0.00	
5,800.00	15.97	85.28	5,608.26	115.55	1,399.31	-1,398.99	0.00	0.00	
5,900.00	15.97	85.28	5,704.40	117.81	1,426.73	-1,426.40	0.00	0.00	
6,000.00	15.97	85.28	5,800.54	120.08	1,454.15	-1,453.82	0.00	0.00	
6,100.00	15.97	85.28	5,896.68	122.34	1,481.57	-1,481.23	0.00	0.00	
6,200.00	15.97	85.28	5,992.82	124.61	1,508.99	-1,508.64	0.00	0.00	
6,300.00	15.97	85.28	6,088.96	126.87	1,536.41	-1,536.06	0.00	0.00	
6,400.00	15.97	85.28	6,185.10	129.14	1,563.83	-1,563.47	0.00	0.00	
6,500.00	15.97	85.28	6,281.24	131.40	1,591.25	-1,590.88	0.00	0.00	
6,600.00	15.97	85.28	6,377.39	133.66	1,618.67	-1,618.30	0.00	0.00	
6,700.00	15.97	85.28	6,473.53	135.93	1,646.09	-1,645.71	0.00	0.00	
6,800.00	15.97	85.28	6,569.67	138.19	1,673.51	-1,673.12	0.00	0.00	
6,855.79	15.97	85.28	6,623.30	139.46	1,688.80	-1,688.41	0.00	0.00	
6,900.00	11.12	83.46	6,666.27	140.44	1,699.11	-1,698.72	11.00	-10.96	
7,000.00	1.14	2.60	6,765.63	142.54	1,708.77	-1,708.37	11.00	-9.98	
7,100.00	10.99	275.13	6,865.01	144.39	1,699.29	-1,698.89	11.00	9.85	
7,200.00	21.96	272.08	6,960.75	145.93	1,671.02	-1,670.61	11.00	10.97	
7,300.00	32.95	271.02	7,049.36	147.09	1,625.00	-1,624.59	11.00	10.99	
7,400.00	43.95	270.44	7,127.55	147.84	1,562.92	-1,562.51	11.00	10.99	
7,500.00	54.94	270.06	7,192.47	148.15	1,487.06	-1,486.65	11.00	11.00	
7,600.00	65.94	269.77	7,241.73	148.01	1,400.21	-1,399.80	11.00	11.00	
7,700.00	76.94	269.52	7,273.52	147.42	1,305.56	-1,305.15	11.00	11.00	
7,800.00	87.93	269.30	7,286.66	146.40	1,206.59	-1,206.18	11.00	11.00	
7,818.79	90.00	269.26	7,287.00	146.16	1,187.81	-1,187.40	11.00	11.00	
7,900.00	90.00	269.26	7,287.00	145.11	1,106.60	-1,106.20	0.00	0.00	
8,000.00	90.00	269.26	7,287.00	143.82	1,006.61	-1,006.21	0.00	0.00	
8,100.00	90.00	269.26	7,287.00	142.53	906.62	-906.22	0.00	0.00	
8,200.00	90.00	269.26	7,287.00	141.23	806.62	-806.23	0.00	0.00	
8,300.00	90.00	269.26	7,287.00	139.94	706.63	-706.25	0.00	0.00	
8,400.00	90.00	269.26	7,287.00	138.65	606.64	-606.26	0.00	0.00	
8,500.00	90.00	269.26	7,287.00	137.36	506.65	-506.27	0.00	0.00	
8,600.00	90.00	269.26	7,287.00	136.06	406.66	-406.28	0.00	0.00	
8,700.00	90.00	269.26	7,287.00	134.77	306.67	-306.30	0.00	0.00	
8,800.00	90.00	269.26	7,287.00	133.48	206.67	-206.31	0.00	0.00	
8,900.00	90.00	269.26	7,287.00	132.19	106.68	-106.32	0.00	0.00	
9,000.00	90.00	269.26	7,287.00	130.89	6.69	-6.33	0.00	0.00	
9,100.00	90.00	269.26	7,287.00	129.60	-93.30	93.66	0.00	0.00	
9,200.00	90.00	269.26	7,287.00	128.31	-193.29	193.64	0.00	0.00	
9,300.00	90.00	269.26	7,287.00	127.02	-293.28	293.63	0.00	0.00	
9,400.00	90.00	269.26	7,287.00	125.72	-393.28	393.62	0.00	0.00	
9,500.00	90.00	269.26	7,287.00	124.43	-493.27	493.61	0.00	0.00	
9,600.00	90.00	269.26	7,287.00	123.14	-593.26	593.59	0.00	0.00	
9,700.00	90.00	269.26	7,287.00	121.85	-693.25	693.58	0.00	0.00	
9,800.00	90.00	269.26	7,287.00	120.55	-793.24	793.57	0.00	0.00	
9,900.00	90.00	269.26	7,287.00	119.26	-893.23	893.56	0.00	0.00	
10,000.00	90.00	269.26	7,287.00	117.97	-993.23	993.55	0.00	0.00	

# Cathedral Energy Services

## Planning Report

<b>Database:</b>	USA EDM 5000 Multi Users DB	<b>Local Co-ordinate Reference:</b>	Well DRAKE 5X-HNC-11-07-67
<b>Company:</b>	Nickel Road Operating LLC	<b>TVD Reference:</b>	20' KB @ 5220.00usft
<b>Project:</b>	WELD COUNTY, CO	<b>MD Reference:</b>	20' KB @ 5220.00usft
<b>Site:</b>	S12-T7N-R67W	<b>North Reference:</b>	Grid
<b>Well:</b>	DRAKE 5X-HNC-11-07-67	<b>Survey Calculation Method:</b>	Minimum Curvature
<b>Wellbore:</b>	OH		
<b>Design:</b>	PLAN #1		

### Planned Survey

Measured Depth (usft)	Inclination (°)	Azimuth (°)	Vertical Depth (usft)	+N/-S (usft)	+E/-W (usft)	Vertical Section (usft)	Dogleg Rate (°/100usft)	Build Rate (°/100u)	Comments / Formations
10,100.00	90.00	269.26	7,287.00	116.67	-1,093.22	1,093.53	0.00	0.00	
10,200.00	90.00	269.26	7,287.00	115.38	-1,193.21	1,193.52	0.00	0.00	
10,300.00	90.00	269.26	7,287.00	114.09	-1,293.20	1,293.51	0.00	0.00	
10,400.00	90.00	269.26	7,287.00	112.80	-1,393.19	1,393.50	0.00	0.00	
10,500.00	90.00	269.26	7,287.00	111.50	-1,493.18	1,493.48	0.00	0.00	
10,600.00	90.00	269.26	7,287.00	110.21	-1,593.17	1,593.47	0.00	0.00	
10,700.00	90.00	269.26	7,287.00	108.92	-1,693.17	1,693.46	0.00	0.00	
10,800.00	90.00	269.26	7,287.00	107.63	-1,793.16	1,793.45	0.00	0.00	
10,900.00	90.00	269.26	7,287.00	106.33	-1,893.15	1,893.43	0.00	0.00	
11,000.00	90.00	269.26	7,287.00	105.04	-1,993.14	1,993.42	0.00	0.00	
11,100.00	90.00	269.26	7,287.00	103.75	-2,093.13	2,093.41	0.00	0.00	
11,200.00	90.00	269.26	7,287.00	102.46	-2,193.12	2,193.40	0.00	0.00	
11,300.00	90.00	269.26	7,287.00	101.16	-2,293.12	2,293.39	0.00	0.00	
11,400.00	90.00	269.26	7,287.00	99.87	-2,393.11	2,393.37	0.00	0.00	
11,500.00	90.00	269.26	7,287.00	98.58	-2,493.10	2,493.36	0.00	0.00	
11,600.00	90.00	269.26	7,287.00	97.29	-2,593.09	2,593.35	0.00	0.00	
11,700.00	90.00	269.26	7,287.00	95.99	-2,693.08	2,693.34	0.00	0.00	
11,800.00	90.00	269.26	7,287.00	94.70	-2,793.07	2,793.32	0.00	0.00	
11,900.00	90.00	269.26	7,287.00	93.41	-2,893.07	2,893.31	0.00	0.00	
12,000.00	90.00	269.26	7,287.00	92.11	-2,993.06	2,993.30	0.00	0.00	
12,100.00	90.00	269.26	7,287.00	90.82	-3,093.05	3,093.29	0.00	0.00	
12,200.00	90.00	269.26	7,287.00	89.53	-3,193.04	3,193.28	0.00	0.00	
12,300.00	90.00	269.26	7,287.00	88.24	-3,293.03	3,293.26	0.00	0.00	
12,400.00	90.00	269.26	7,287.00	86.94	-3,393.02	3,393.25	0.00	0.00	
12,500.00	90.00	269.26	7,287.00	85.65	-3,493.02	3,493.24	0.00	0.00	
12,600.00	90.00	269.26	7,287.00	84.36	-3,593.01	3,593.23	0.00	0.00	
12,700.00	90.00	269.26	7,287.00	83.07	-3,693.00	3,693.21	0.00	0.00	
12,800.00	90.00	269.26	7,287.00	81.77	-3,792.99	3,793.20	0.00	0.00	
12,900.00	90.00	269.26	7,287.00	80.48	-3,892.98	3,893.19	0.00	0.00	
13,000.00	90.00	269.26	7,287.00	79.19	-3,992.97	3,993.18	0.00	0.00	
13,100.00	90.00	269.26	7,287.00	77.90	-4,092.97	4,093.16	0.00	0.00	
13,200.00	90.00	269.26	7,287.00	76.60	-4,192.96	4,193.15	0.00	0.00	
13,300.00	90.00	269.26	7,287.00	75.31	-4,292.95	4,293.14	0.00	0.00	
13,400.00	90.00	269.26	7,287.00	74.02	-4,392.94	4,393.13	0.00	0.00	
13,500.00	90.00	269.26	7,287.00	72.73	-4,492.93	4,493.12	0.00	0.00	
13,600.00	90.00	269.26	7,287.00	71.43	-4,592.92	4,593.10	0.00	0.00	
13,700.00	90.00	269.26	7,287.00	70.14	-4,692.92	4,693.09	0.00	0.00	
13,800.00	90.00	269.26	7,287.00	68.85	-4,792.91	4,793.08	0.00	0.00	
13,900.00	90.00	269.26	7,287.00	67.55	-4,892.90	4,893.07	0.00	0.00	
14,000.00	90.00	269.26	7,287.00	66.26	-4,992.89	4,993.05	0.00	0.00	
14,100.00	90.00	269.26	7,287.00	64.97	-5,092.88	5,093.04	0.00	0.00	
14,200.00	90.00	269.26	7,287.00	63.68	-5,192.87	5,193.03	0.00	0.00	
14,300.00	90.00	269.26	7,287.00	62.38	-5,292.87	5,293.02	0.00	0.00	
14,400.00	90.00	269.26	7,287.00	61.09	-5,392.86	5,393.00	0.00	0.00	
14,500.00	90.00	269.26	7,287.00	59.80	-5,492.85	5,492.99	0.00	0.00	
14,600.00	90.00	269.26	7,287.00	58.51	-5,592.84	5,592.98	0.00	0.00	
14,700.00	90.00	269.26	7,287.00	57.21	-5,692.83	5,692.97	0.00	0.00	
14,800.00	90.00	269.26	7,287.00	55.92	-5,792.82	5,792.96	0.00	0.00	
14,900.00	90.00	269.26	7,287.00	54.63	-5,892.82	5,892.94	0.00	0.00	
15,000.00	90.00	269.26	7,287.00	53.34	-5,992.81	5,992.93	0.00	0.00	
15,100.00	90.00	269.26	7,287.00	52.04	-6,092.80	6,092.92	0.00	0.00	
15,200.00	90.00	269.26	7,287.00	50.75	-6,192.79	6,192.91	0.00	0.00	

# Cathedral Energy Services

## Planning Report

<b>Database:</b>	USA EDM 5000 Multi Users DB	<b>Local Co-ordinate Reference:</b>	Well DRAKE 5X-HNC-11-07-67
<b>Company:</b>	Nickel Road Operating LLC	<b>TVD Reference:</b>	20' KB @ 5220.00usft
<b>Project:</b>	WELD COUNTY, CO	<b>MD Reference:</b>	20' KB @ 5220.00usft
<b>Site:</b>	S12-T7N-R67W	<b>North Reference:</b>	Grid
<b>Well:</b>	DRAKE 5X-HNC-11-07-67	<b>Survey Calculation Method:</b>	Minimum Curvature
<b>Wellbore:</b>	OH		
<b>Design:</b>	PLAN #1		

### Planned Survey

Measured Depth (usft)	Inclination (°)	Azimuth (°)	Vertical Depth (usft)	+N/-S (usft)	+E/-W (usft)	Vertical Section (usft)	Dogleg Rate (°/100usft)	Build Rate (°/100u)	Comments / Formations
15,300.00	90.00	269.26	7,287.00	49.46	-6,292.78	6,292.89	0.00	0.00	
15,400.00	90.00	269.26	7,287.00	48.17	-6,392.77	6,392.88	0.00	0.00	
15,500.00	90.00	269.26	7,287.00	46.87	-6,492.77	6,492.87	0.00	0.00	
15,600.00	90.00	269.26	7,287.00	45.58	-6,592.76	6,592.86	0.00	0.00	
15,700.00	90.00	269.26	7,287.00	44.29	-6,692.75	6,692.85	0.00	0.00	
15,800.00	90.00	269.26	7,287.00	43.00	-6,792.74	6,792.83	0.00	0.00	
15,900.00	90.00	269.26	7,287.00	41.70	-6,892.73	6,892.82	0.00	0.00	
16,000.00	90.00	269.26	7,287.00	40.41	-6,992.72	6,992.81	0.00	0.00	
16,100.00	90.00	269.26	7,287.00	39.12	-7,092.72	7,092.80	0.00	0.00	
16,200.00	90.00	269.26	7,287.00	37.82	-7,192.71	7,192.78	0.00	0.00	
16,300.00	90.00	269.26	7,287.00	36.53	-7,292.70	7,292.77	0.00	0.00	
16,400.00	90.00	269.26	7,287.00	35.24	-7,392.69	7,392.76	0.00	0.00	
16,500.00	90.00	269.26	7,287.00	33.95	-7,492.68	7,492.75	0.00	0.00	
16,600.00	90.00	269.26	7,287.00	32.65	-7,592.67	7,592.73	0.00	0.00	
16,700.00	90.00	269.26	7,287.00	31.36	-7,692.67	7,692.72	0.00	0.00	
16,800.00	90.00	269.26	7,287.00	30.07	-7,792.66	7,792.71	0.00	0.00	
16,900.00	90.00	269.26	7,287.00	28.78	-7,892.65	7,892.70	0.00	0.00	
17,000.00	90.00	269.26	7,287.00	27.48	-7,992.64	7,992.69	0.00	0.00	
17,100.00	90.00	269.26	7,287.00	26.19	-8,092.63	8,092.67	0.00	0.00	
17,200.00	90.00	269.26	7,287.00	24.90	-8,192.62	8,192.66	0.00	0.00	
17,300.00	90.00	269.26	7,287.00	23.61	-8,292.62	8,292.65	0.00	0.00	
17,353.79	90.00	269.26	7,287.00	22.91	-8,346.40	8,346.43	0.00	0.00	

### Targets

Target Name	Dip Angle (°)	Dip Dir. (°)	TVD (usft)	+N/-S (usft)	+E/-W (usft)	Northing (usft)	Easting (usft)	Latitude	Longitude
- hit/miss target									
- Shape									
DRAKE 5X-HNC-11-07-4	0.00	359.59	7,287.00	22.91	-8,346.40	1,457,772.69	3,175,500.46	40.588268	-104.868100
- plan hits target center									
- Point									
DRAKE 5X-HNC-11-07-4	0.00	359.57	7,287.00	147.25	1,272.08	1,457,897.03	3,185,118.93	40.588416	-104.833466
- plan misses target center by 6.78usft at 7735.02usft MD (7280.28 TVD, 147.11 N, 1271.21 E)									
- Point									