



March 16, 2018

Colorado Oil and Gas Conservation Commission  
1120 Lincoln Street, Suite 801  
Denver, CO 80203

**RE: Proposed Wellbore Spacing Unit**  
Dittmer KE 20-022HC  
Codell New Drill  
NENW Sec. 32, Township 1N, Range 66W, 6<sup>th</sup> P.M.  
Weld County, Colorado

Dear Director,

Great Western Operating Company, LLC (Great Western) is planning to drill the above captioned well in accordance with the provisions of Colorado Oil and Gas Conservation Commission (COGCC) Rule 318A.e.

Great Western's proposed wellbore spacing unit consists of:

Township 1N, Range 66W (Weld County):

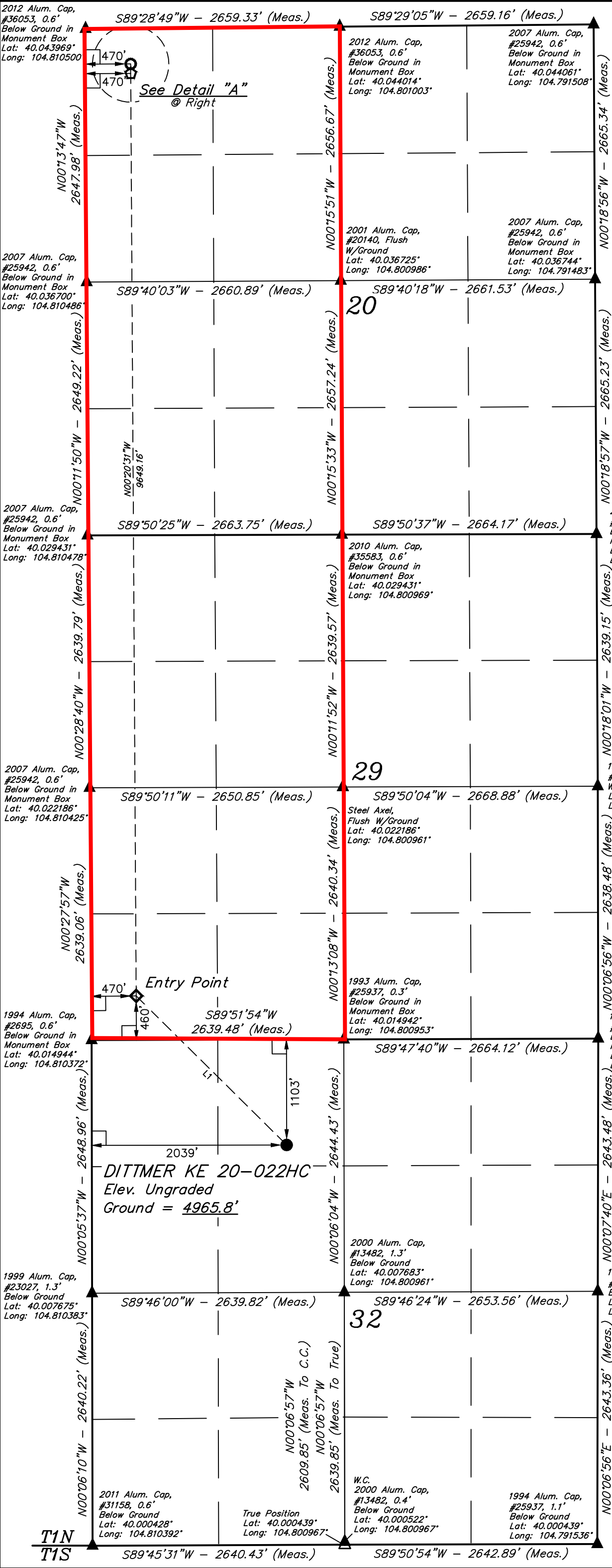
Section 20: W2  
Section 29: W2

Total Acres: 640ac

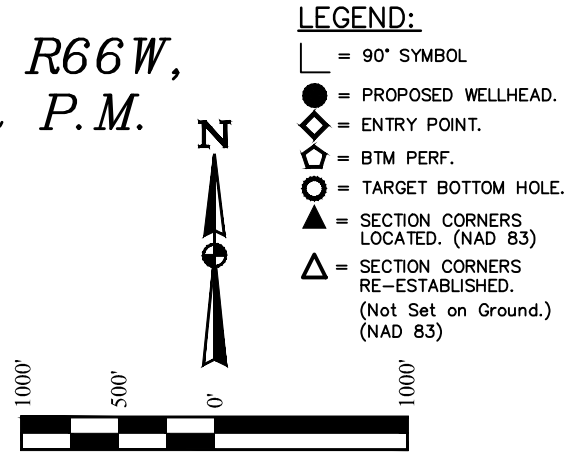
The 30 day notification time period has passed and we have not yet received any objections to such well locations or proposed spacing unit, therefore Great Western hereby requests the Director to approve the above mentioned well. Great Western respectfully requests the COGCC review the enclosed map illustrating the proposed wellbore spacing unit.

Respectfully,

*Natalie Svendsen*  
Regulatory Analyst  
Great Western Operating Company, LLC

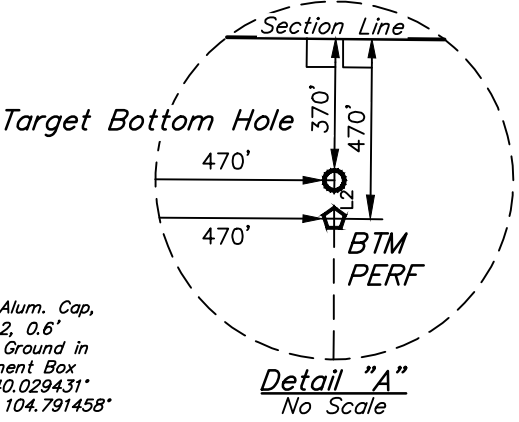


T1N, R66W,  
6th P.M.



**BASIS OF BEARINGS**  
BASIS OF BEARINGS IS A G.P.S. OBSERVATION

**BASIS OF ELEVATION**  
HUBBS TRIANGULATION STATION LOCATED IN THE NE 1/4 OF SECTION 21, T1N, R64W, 6th. P.M., TAKEN FROM THE KEENESBURG, QUADRANGLE, COLORADO, WELD COUNTY, 7.5 MINUTE QUAD (TOPOGRAPHIC MAP) PUBLISHED BY THE UNITED STATES DEPARTMENT OF THE INTERIOR, GEOLOGICAL SURVEY. SAID ELEVATION IS MARKED AS BEING 5168 FEET.



LINE TABLE		
LINE	DIRECTION	LENGTH
L1	N45°17'20"W	2216.04'
L2	N00°13'47"W	100.00'

PDOP = 1.5

NAD 83 (SURFACE LOCATION)	
LATITUDE	= 40°00'42.90" (40.011917)
LONGITUDE	= 104°48'11.15" (104.803097)
NAD 27 (SURFACE LOCATION)	
LATITUDE	= 40°00'42.95" (40.011931)
LONGITUDE	= 104°48'09.26" (104.802572)
NAD 83 (ENTRY POINT)	
LATITUDE	= 40°00'58.34" (40.016206)
LONGITUDE	= 104°48'31.34" (104.808706)
NAD 27 (ENTRY POINT)	
LATITUDE	= 40°00'58.40" (40.016222)
LONGITUDE	= 104°48'29.44" (104.808178)
NAD 83 (BTM PERF)	
LATITUDE	= 40°02'33.67" (40.042686)
LONGITUDE	= 104°48'31.75" (104.808819)
NAD 27 (BTM PERF)	
LATITUDE	= 40°02'33.73" (40.042703)
LONGITUDE	= 104°48'29.85" (104.808292)
NAD 83 (TARGET BOTTOM HOLE)	
LATITUDE	= 40°02'34.66" (40.042961)
LONGITUDE	= 104°48'31.75" (104.808819)
NAD 27 (TARGET BOTTOM HOLE)	
LATITUDE	= 40°02'34.72" (40.042978)
LONGITUDE	= 104°48'29.85" (104.808292)

**CERTIFICATE**  
THIS IS TO CERTIFY THAT THE ABOVE PLAT WAS PREPARED FROM FIELD NOTES OF ACTUAL SURVEYS MADE BY ME OR UNDER MY SUPERVISION AND THAT THE SAME ARE TRUE AND CORRECT TO THE BEST OF MY KNOWLEDGE AND BELIEF.



REV: 3 02-05-18 K.B. (BP ADD & TBH CHANGE)

**GREAT WESTERN OPERATING COMPANY**

**DITTMER KE 20-022HC**  
**NE 1/4 NW 1/4, SECTION 32, T1N, R66W, 6th P.M.**  
**WELD COUNTY, COLORADO**



**UELS, LLC**  
Corporate Office \* 85 South 200 East  
Vernal, UT 84078 \* (435) 789-1017

SURVEYED BY: DALLAS NIELSEN, B.C.	SURVEY DATE: 04-03-15
DRAWN BY: J.W.	DATE DRAWN: 04-07-15
SCALE: 1" = 1000'	

**WELL LOCATION PLAT**